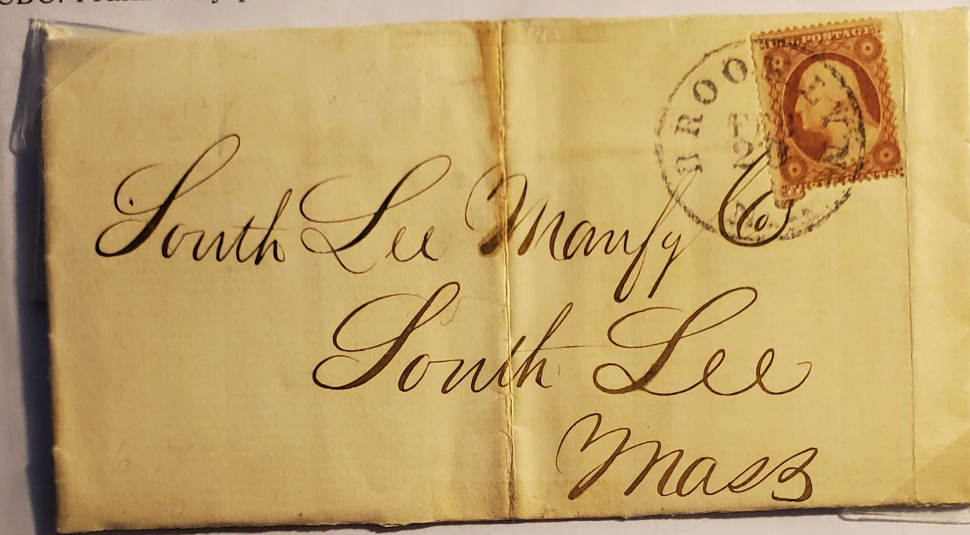


7.13 Selling Alum (powdered aluminum) to Paper Mills

(Below) SFL to South Lee Mass. Black Brooklyn N.Y. Feb 20 (1859) 30mm CDC. Franked by perforated 3c 1851 Ty. I (rose brown).



Content: "Your favor inclosing samples of flat cap 16lb is at hand @ 2.25 net. Please send us by return mail one case & we will see how it looks and give an immediate answer about the lot. P.S. Will speak to our M.H about the alum . . ." H.C. & M. Hulbert, Paper and Papermaker Supply Warehouse, NYC, February 2, 1859.

(right) Advertisement of H.C. & M. Hulbert, Paper House (from Doggett's New-York City directory for 1850/51, Google books).

H. C. & M. HULBERT,
COMMISSION
PAPER HOUSE
Importers and Dealers in
Rags and Chemicals.

SIZING. A Specialty with us for Tub or Animal-Blood Paper
SOLE AGENTS IN THE UNITED STATES

JULION'S PINK HARDENING
FOR WRITING AND PRINTING PURPOSES
Imparting the surface and color, and especially adapted when a fine, clear impression is desired in Printing or Letterpress.

ULTRAMARINE.
Manufactured especially for us, of superior quality, both in shade and strength.

FELTINGS.
We keep a full assortment of ALL GRADES, both English and American.

Paper Manufacturers' Supplies.

Our aim is to obtain the BEST and MOST UNIFORM articles, with the view they are the cheapest for the manufacturer.

**H. C. & M. HULBERT, 13 BEEKMAN STREET.
NEW YORK.**

7.14 Three-Alarm Fire Destroys Field's Warehouse

(Below) Envelope to Landsford, Mass. Black New York July 28 (1859)
30mm CDC. Franked by 3c 1857 Ty. I (claret) <w./repaired UL corner>.
Manuscript "Ford" and "3" due for missent and forwarded from Rochford
to Landsford.



Advertising Cover: "Writing Paper, Printing, Hardware, Wrapping, Manilla, Hanging, Ledger, Tissue, Flat Caps, &c." Cyrus W. Field & Co. Importers & Wholesale Dealers in Paper and Paper Manufacturers' Materials, August 28, 1859. "Paper Dealers and Stationers, No. 10 Exchange Pl. and 1 Mill St." (also see 7.9)

Dec 29, 1859, newspaper photo
of three-alarm fire at Cyrus
Field's paper warehouse (from
Wikipedia)

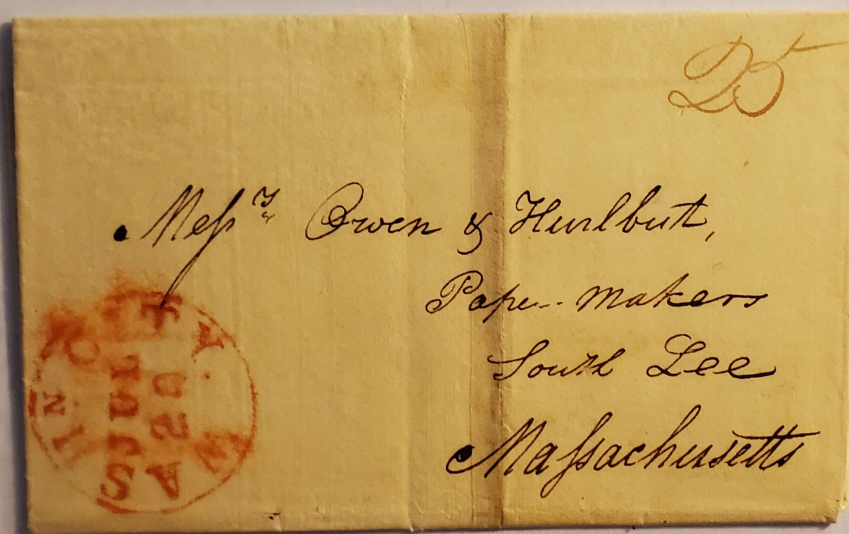


Chapter 8: Baltimore and Washington D.C.

Washington D.C. was an important market for U.S. paper-makers, but the long distances between the capitol and paper mills in rural parts of the country hindered communications. Agents were often employed by paper mills to facilitate Government contracts.

Baltimore was the main port of access to markets in the southern states, and the postal history reflects the city's importance in this regard. Agents also came up from Washington, and came into play an important role here too.

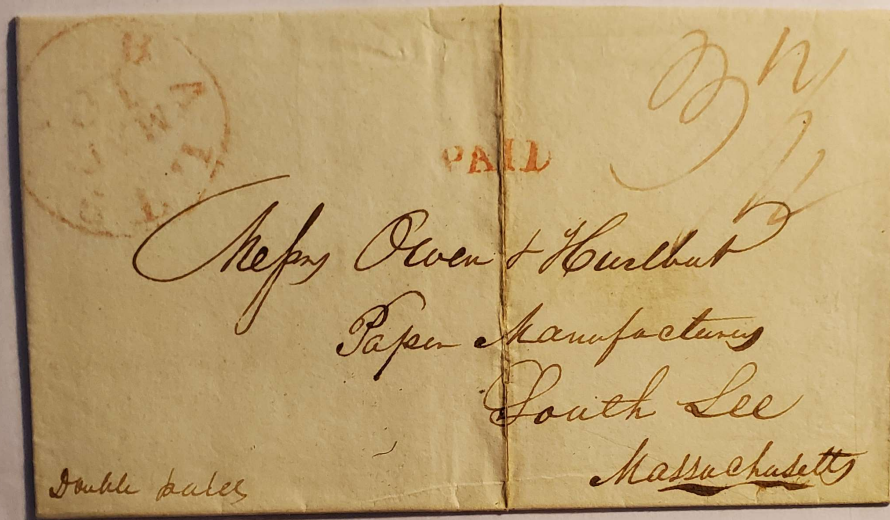
(Below) SFL to South Lee Mass. Red WASHn CITY JUL 20 (1829) 32mm
CDC. Manuscript '25' (cents) for mail travelling over 400 mi.



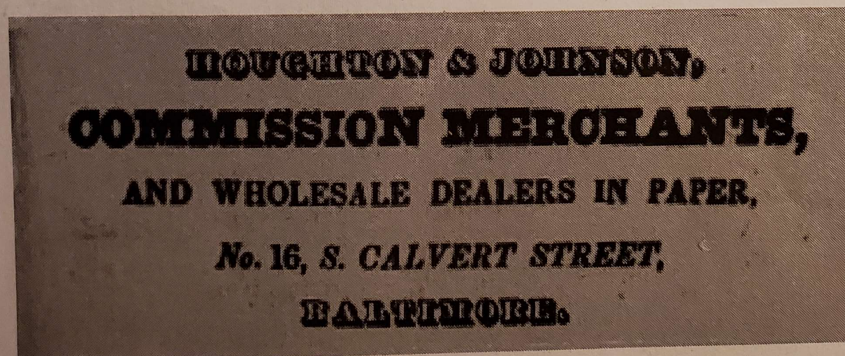
Content: I get the finest blue wove & laid 4to for \$4.50, and the white for \$4.25 with the exception of a single manufacturer, Ames of Pennsylvania, he charges \$5.50 for No. 1 white wove quarto. and is able to find purchasers. The only reason I can give for it is, that he sorts his paper better, and is more uniform in sizing! Wm. A. Davis, Stationeer, Washington, July 20th, 1829

8.1 Early Commission Paper Warehouse in Baltimore

(Below) DFL to South Lee Mass. Manuscript 'Double Paid'. Red BALTE MD MAY 10 (1831) 32mm CDC with matching curved 'PAID'. Manuscript '37 1/2' (cents) double rate (2x 18 3/4) for two pages (sample enclosed?) traveling 150 to 400 mi.



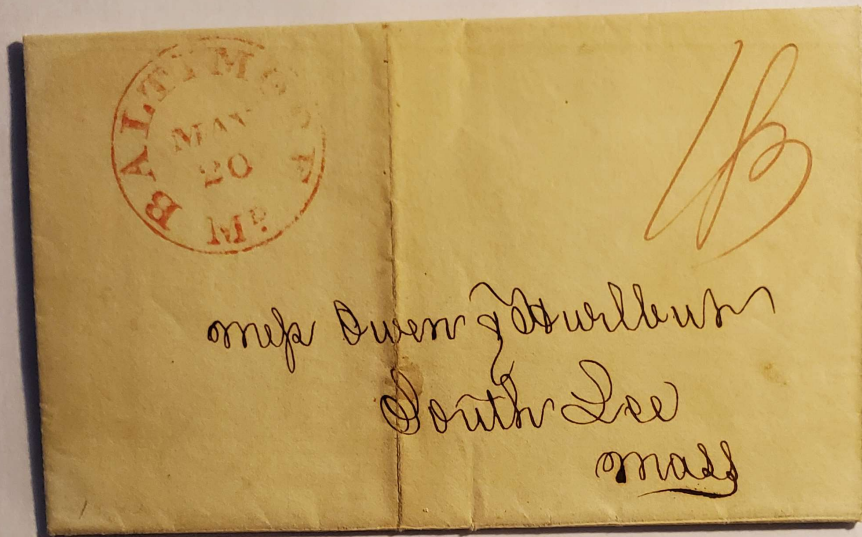
Content: "It is now about one year since we commenced selling papers on comm. in this city and . . . have not the least doubt but what we could dispose of several cases of your 4to post in a vdw mos. we have call for your paper almost daily. " Houghton & Johnson, Commission Merchants, Baltimore, Md., March 10th 1831.



(above) Houghton & Johnson advertisement in Manchett's Baltimore Directory, 1831

8.2 Earliest Reported Sale of Envelopes at the Post Office

(Below) SFL to South Lee Mass. Red Baltimore Md. MAY 20 (1840) 32mm CDC. Rated '18 3/4' (cents) for mail travelling 150 to 400 mi.



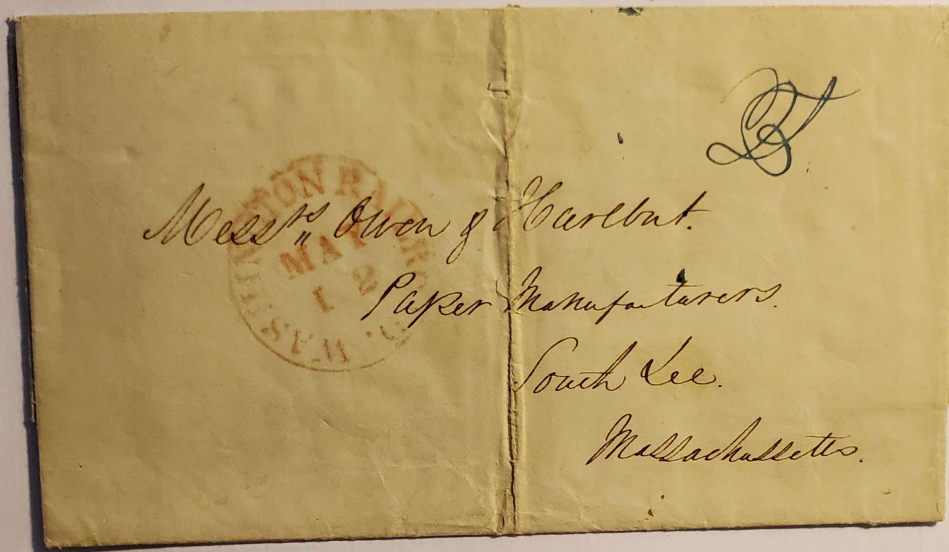
Content: "I have just closed sales of your Envelope paper (calendered) and I have now got it introduced into the Post Office here. <It> can no doubt affect sales to some amount therefore have the goodness to send me 50 to 100 reams of it as soon as you can." Otis Spears, Commission Merchant, 21 S. Charles St., Baltimore, Md. May 19th 1840.



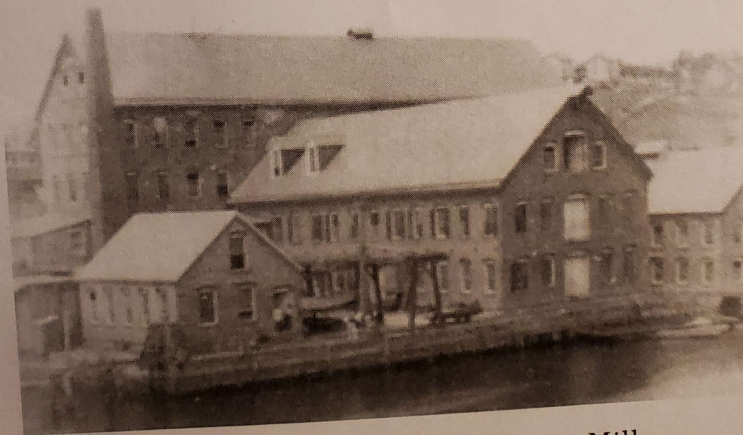
Baltimore Post Office, 1841 (Wikipedia)

8.3 Abandonment of Handmade Paper

(Below) SFL to South Lee Mass. Red "Washington Railroad May 12" (1842)
30mm CDC. Manuscript '25' (cents) for mail travelling over 400 mi.



Content: "I saw one of your firm a while at Sheffield's New York <paper mill> towards the end of March last, and he said that . . . you have **given-up making hand papers** and mean to confine yourselves entirely to machine." Frank Taylor, Paper Dealer, Washington D.C. May 5, 1842.



Photograph of Sheffield's Paper Mill
(From Saugerties By Edward Poll, Karlyn Knaust Elia)

8.4 Shipping by Adams Express, and Stationer's Enthusiasm over the First U.S Postage Stamps

(Below) SFL to South Lee Mass. Blue Baltimore Md. May 17 30mm CDC with matching "Paid". Franked by 5-cts. 1847 (1st issue orange brown). Manuscript "Due 5" since the rate for over 300 miles was ten cents.



Content: "Just a note checking on our previous order. . . . Mr. Waters is desirous to get his stamp." Turner & Mudge, Baltimore stationers, May 17, 1848.

(Below) SFL to South Lee Mass. Black Washington City D.C. NOV 13 1855 30mm CDC. Franked by 3-cts 1851 Ty. II (rose red).



Content: ". . . in reference to the Writing papers for the Proposals we <sent> . . . , send samples by Adams Express." R. Franham, Bookseller, Washington D.C. Nov 12, 1855.

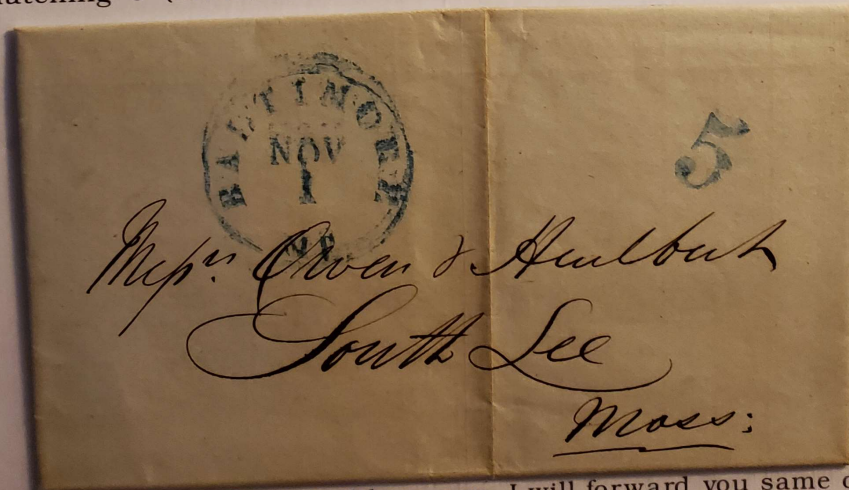
8.5 Difficulty in Paper Sales

(Below) (Below) SFL to South Lee Mass. Red New-York Jun 17 (1844) 30mm CDC and matching 'PHILADA RAILROAD.' Manuscript '18 3/4' for mail travelling 150 to 400 mi.. (Philadelphia to South Lee Mass.). The New York postal clerk denied the attempt of Postmaster Free mails (see 5.1).



Content: "We have received the two cases of Pheonix Cap, and none sold." Krosen & Speers, Paper Dealer, 21 S. Charles St, Baltimore, Md. June 17th, 1844.

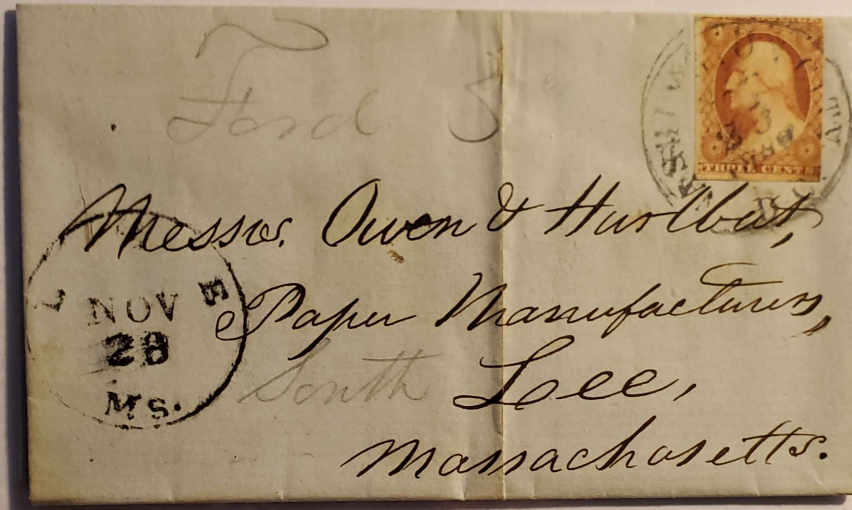
(Below) SFL to South Lee Mass. Blue Baltimore Md. NOV 1 (1853) 31mm CDC. Matching '5' (cents) due for mail travelling under 300 mi.



Content: "Business is very dull here now. I will forward you same order in a day or two." R.M. Justing, Paper Merchant, Baltimore. Nov. 1, 1853.

8.6 Order for Congress Paper

(Below) SFL to South Lee Mass. Black Washington City D.C. Nov 23 (1856) 30mm CDC. Franked by 3c 1851 Ty. II (brownish carmine). Missent and forwarded to South Lee and black Lee Ms. NOV 28 (30mm) CDC with manuscript 'Ford 5' (cents) postage due.



Content: "You will please send me one case white laid Congress Cap ruled, the best. I wish also to get 20 rms the very best White Laid Cap, flat, not ruled, 17 or 18 pounds, also the same article blue." R. Farnham, Bookseller, Washington D.C. Nov, 24, 1856.

**BARTLETT'S AMERICAN EXPLOR-
ing Expedition.**—Personal narrative of ex-
plorations and incidents in Texas, New Mexico
California, Sonora, and Chihuahua, by J. R. Bart-
lett. United States Commissioner during that pe-
riod, in two volumes, with maps and illustrations.
The Hive of the Bee Hunter, a repository of
Sketches, including peculiar American character,
scenery, and rural sports, by T. B. Thorpe, author
of Tom Owen, the Bee Hunters, &c., illustrated
by sketches from nature.
Farmingdale, a novel, by Caroline Thomas.
Our Parish, or annals of Pastor and People.
Just received and for sale by
R. FARNHAM,
Corner of Penn. avenue and 11th st.

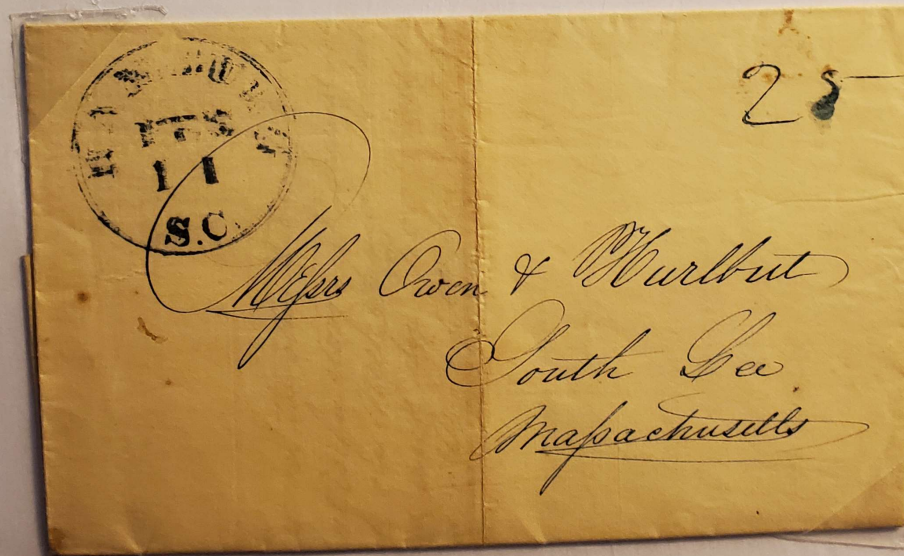
(above) R. Farnham advertisement in *Washington Sentinel*, August 19, 1856

Chapter 9: Southern States

Prior to the Civil War the Southern states imported 90% of their paper, mostly from the Northern states but also from England and France.

Postal history of the pre-war era is rather scarce as only thirteen (13) paper mills existed in the south. Most postal history is from agents or businesses such as printers. After the War only one paper mill survived, making southern postal history equally scarce.

(Below) SFL to South Lee Mass. Blue Hamburg S.C. FEB 11 (1842) 30mm CDC. Manuscript '25' (cents) for mail travelling greater than 400mi.



Content: "I have delayed the remittance of these 6 days in order to recieve the printers determination respecting further orders." G.O.B. Ford, Hamburg, paper dealer, Hamburg, South Carolina, February 10, 1842.

9.1 Order for Newspaper

(Below) SFL to Boston. Manuscript "Mail -- Paid." Blue "New Orleans La. Aug 10" (1845) 30 mm. CDC with matching "PAID," and "10" (cents) for mail traveling over 300 miles.

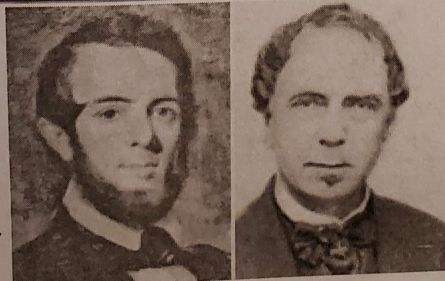


Content: "We are under the impression that we requested your Mr. Tileston to send us same hardware paper, if it was omitted on the winter's (Mr. Holbook's) order left with you in June last. Have the goodness to add 10 bundles to it. . . . Our Mr. Kendall left us yesterday for New York and Boston, via Charlestown." Lumsden, Kendell & Co., Publishers New Orleans Picayune, New Orleans, Louisiana, August 10, 1845.



(above) Early
masthead of
newspaper.

(right) Francis
Asbury Lumsden,
N.O. Picayune
founding member



(left) George Wilkins
Kendall, **N.O.**
Picayune founding
member. (Source,
175th Anniversary
of the Times-
Picayune)

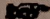
9.2 Whiteman Paper Mill, Specialists in Bond, Banknote, and Securities Papers

(Below) SFL to South Lee Mass. Blue NASHVILLE Te. JAN 25 (1849) 30mm CDC with matching '10' (cents) rate for mail travelling greater than 300mi.



Content: ". . . my business called me away from Fishkill on short notice I left such a statement . . . with David Davis of Fishkill Landing." Thomas C. Levop, Millwright, White's Creek Mill, Nashville, Tenn. January 1, 1849.

(Currently, this is the only known correspondence from the Whiteman mill.)

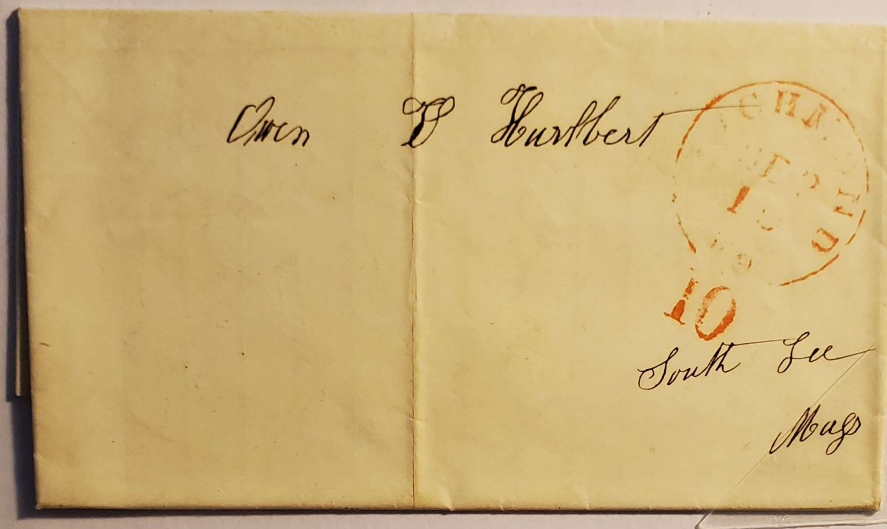
W. S. WHITEMAN,
PAPER MANUFACTORY
LOCATED EIGHT MILES ON WHITE'S CREEK PIKE.
Paper Warehouse, 53 Public Square, Nashville, Tenn.
Res. at the Manufactory.
 The highest price paid for rags in cash.

(above) Advertisement of W. S. Whiteman (from
Nashville City Directories, 1853-54)

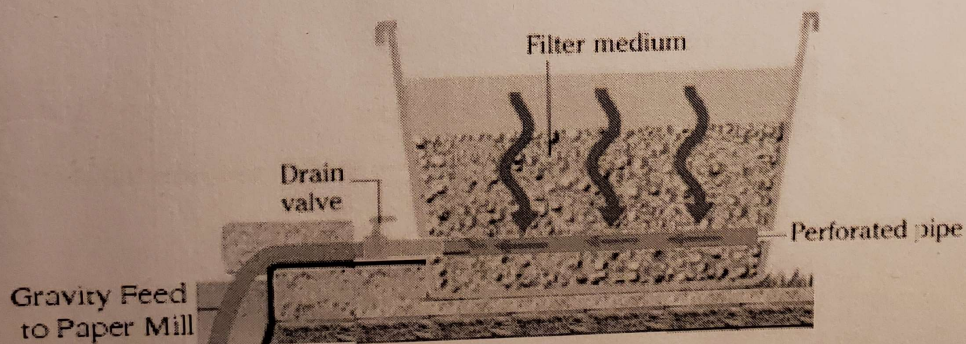
(Philatelic Note: CSA STAMP PAPER was made at
Whiteman's White Creek Mill in 1861 and 1862.

9.3 Engineering Plans for Filter Pond

(Below) SFL to South Lee Mass. Red Richmond Va. Sep 19 (1850) 30mm CDC with integral '10' (cents) for mail travelling greater than 300mi.



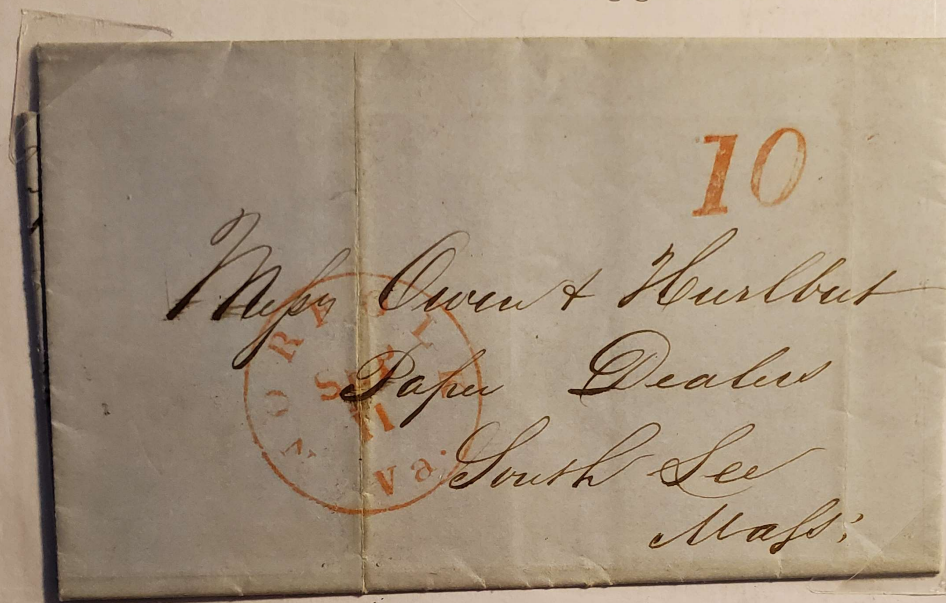
Content: "You wish for me to send you the plan of a filterer (filter pond) that I spoke of . . . which I can do for the sum of forty dollars." Alexander Anderson, Hydraulic Engineer, Richmond, Va. September 19, 1850.



(above) Illustration of Early Filtering Pond for Paper-Making

9.4 Order for 100 Reams of Cap and Letter Paper

(Below) SFL to South Lee Mass. Red Norfolk Va. SEP 11 (1850) 34mm CDC with matching '10' (cents) for mail travelling greater than 300mi.



Content: "... what you can put us 10 reams of your cap and letter paper . . . and quality as of this sheet. What you think the propable cost of getting it here?" Vickey & Griffith, Bookbinders, 10 Main St., Norfolk, Va. September 11, 1850.

VICKERY'S

DIRECTORY

FOR THE

CITY OF NORFOLK,

TO WHICH IS ADDED A

BUSINESS DIRECTORY

FOR

1859.

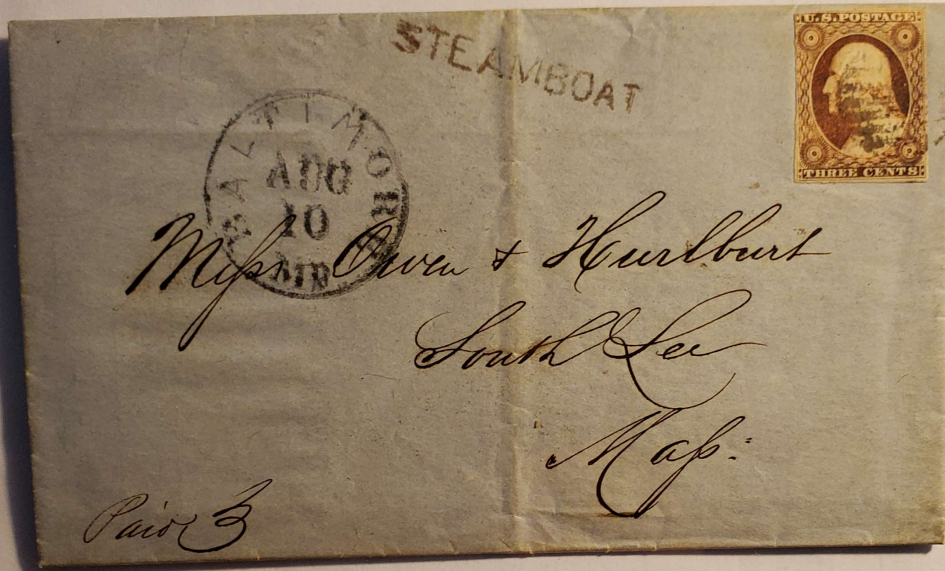
COMPILED BY W. EDGEMORE FERRIS.

NORFOLK:
PUBLISHED BY VICKERY & COMPANY,
Bookbinders and Stationers, 10 E. Main St.
- 10 -

(Right) Imprint of
Vickery's Business
Directory for 1859.

9.5 Order for Paper via Coastal Steamer from Norfolk

(Below) SFL to South Lee Mass. Manuscript "Paid 3." Black Baltimore Md. (1852) 30 mm CDC. Straightline "Steamboat" applied for mail received by costal steamer. Franked by 3-cts. 1851 Ty. II (brownish carmine). Originating from Norfolk, Va.



Content: "Enclosed please find check for amount of invoice last sent <\$70.95> which we hope will reach you in safety . . . " Vickery & Co., successors to Vickery & Grifith, Bookbinders, Norfolk, Va. October 9, 1852.

(right) Advertising
of Vickery & Co.
blank book
manufactory (from
Vickery's Directory
for the City of Nor-
folk, 1859

BOOK BINDERY AND BLANK BOOK MANUFACTORY.

VICKERY & COMPANY.

Would inform the Public that their BOOK BINDERY & is for
operation, and they are prepared to manufacture

BLANK BOOKS

Of every description of Binding and style of Binding, and to bind

MANUSCRIPTS, MUSIC AND PRINTED BOOKS,

At every kind, in the best manner, and on the

REASONABLE TERMS

As per arrangements in our Office

Merchants, Clerks of Courts and Bail Officers

Will feel it greatly to their advantage to have their Books, Manuscripts
made at our Establishment, as no pains will be spared to give
perfect satisfaction both as regards quality and price.

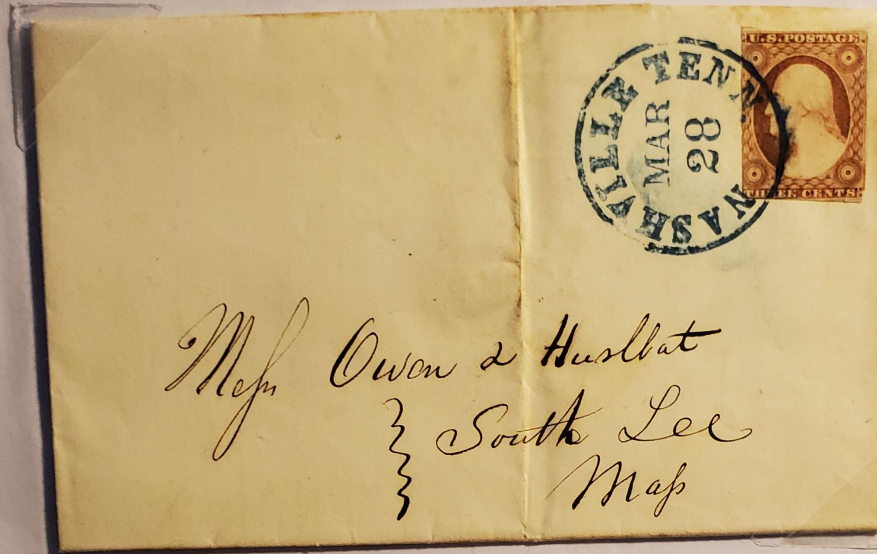
VICKERY & COMPANY,

Bookbinders, Stationers, Book Sellers and

No. 18 Main Street, South of Market Square.

9.6 Forwarding Agent(s) in Baltimore and Charleston

(Below) SFL to South Lee Mass. Blue Nashville Tenn. MAR 28 (1857) 30mm CDC. Franked by 3-cts 1851 Ty. II (claret).



Content: "I am or will soon be out of paper. Please send a box, say blue or white, about the quality of this sheet with a bill . . . You can sent it to the care of A.C. Schaefer, Baltimore, or S.Wyatt, Charleston SC." H. T. Yeatman, grocery and paper merchant, 41 Market St, Nashville, Tn. May 27, 1857.

(Right) Imprint of
Yeatman's Business
Directory for 1847

