



## The Journal of the Empire State Postal History Society

March 2020

Whole No. 31 New Series

**Charles J. DiComo, PhD**, President  
**David E. Williams**, Editor

**Drew A. Nicholson**, Chr. Publ. Comm.  
**Lawrence J. Laliberte**, Bulletin Editor

### Inside This Issue

#### Articles

**7/1/71 Affair in Essex County, N.Y. Part II: Olmstedville to Witherbee** ..... 3

By Glenn A. Estus

**The Albany Boatmen's Relief Association** ..... 12

By Josh Furman

**The Trime Hand Cancel** ..... 15

By Glenn A. Estus

**New Yorker by Birth, Floridian by Chance – and Choice** ..... 18

By Francis Ferguson

**Changes to Smith/Kay Since 1980** ..... 20

By Glenn A. Estus

**Cover of the Issue:** ..... Back Cover



Page 3



Page 12



Page 15



# EXCELSIOR!

The Journal of New York State Postal History  
Published March and September by the  
**EMPIRE STATE POSTAL HISTORY SOCIETY**

P.O. Box 482  
East Schodack, NY 12063-0482  
Web site: <<http://www.esphs.us>>



Articles for **EXCELSIOR!** are solicited.  
They remain the property of the authors and  
the ESPHS. Please contact the Editor and the author  
to request reprint rights or use in another publication.  
Please send articles and re-publication requests to the  
**Editor:**

David E. Williams  
7115 Abbey Woods Dr. NE  
New Salisbury, IN 47161-9644  
812.366.4749/ Fax: 812.366.4749  
E-mail: <[davidinindiana@aol.com](mailto:davidinindiana@aol.com)>

The **ESPHS** also publishes a  
quarterly **Bulletin**. The **Editor** is:

Lawrence Laliberte  
15 Sunset Hill Ct.  
Carmel, NY 10512-5027  
E-mail: <[largin1@verizon.net](mailto:largin1@verizon.net)>

**Webmaster:** Charles J. DiComo, PhD  
1298 Hammock Way  
Lancaster, PA 17601-4695  
914.450.3791  
Email: <[charlesdicomo@gmail.com](mailto:charlesdicomo@gmail.com)>

**For membership in the ESPHS**, write to the Secretary at the heading address, or print and mail the application on our website. Dues are \$20.00 (\$25.00 for non-US residents) for applications dated January to June. For applications dated July to December (for 1.5-year term) dues are \$30.00 (\$35.00 for non-US residents).

**ADVERTISEMENTS** are gladly accepted. Please contact the Secretary at the above address.

## **SOCIETY OFFICERS**

**President:** Charles J. DiComo, PhD  
1298 Hammock Way  
Lancaster, PA 17601-4695  
914.450.3791  
E-mail: <[charlesdicomo@gmail.com](mailto:charlesdicomo@gmail.com)>

**Vice President:** David Przepiora  
1505 Emery Rd.  
East Aurora, NY 14052-9729  
716.805.3313  
Email: <[djprze@hotmail.com](mailto:djprze@hotmail.com)>

**Secretary:** George McGowan  
P.O. Box 482  
East Schodack, NY 12063-0482  
518.479.4396  
E-mail: <[geolotus2003@nycap.rr.com](mailto:geolotus2003@nycap.rr.com)>

**Treasurer:** Dr. George DeKornfeld  
1014 Clove Rd.  
Hobart, NY 13788-2930  
Email: <[docgfd@twc.com](mailto:docgfd@twc.com)>

**APS Liaison & Award Chair:** George DeKornfeld  
(See immediately above for address)

**Editor's Notes:** This edition of the *Excelsior!* will be my last as your editor. I appreciate all the support you have given me over the last thirteen and a half years, with your submission of quality articles and for being a reader of our flagship publication. I look forward to continuing to support ESPHS with future articles and continuing my research of New York State star cancels. I intend to dedicate more time to my family, as well as spending more time with my musical endeavors on the saxophone. Please support my successor by providing articles for future editions. (As an incentive, submitting a one to four-page article will get you a one-year extension on your membership and a five-page article will get you a two-year extension. Just think—if you write regularly for *Excelsior!* you'll have the potential of earning free membership for life! And think about how you will enrich yourself and others.)

Once again, thank you, and happy collecting!

## **7/1/71 AFFAIR IN ESSEX COUNTY, N.Y. PART II: OLMSTEDVILLE TO WITHERBEE**

**By: Glenn A. Estus**

July 1, 2021 will be the 50<sup>th</sup> anniversary of the creation of the United States Postal Service. On July 1, 1971, the old United States Post Office Department moved from being a Federal cabinet department to an independent agency of the executive branch. On that day, the USPS issued an 8c postage stamp to commemorate the transition. The stamp was placed on sale at every post office in the United States, although the official First Day of Issue post office was Washington, D.C. As well, the USPS provided each post office a cacheted envelope to give to patrons.

In the March 2019 issue of *Excelsior!*, I showed half of the efforts of the late Mike Peterson, a former member of the ESPHS, to obtain signed first day covers from, and photographs of, every post office in Essex County, one of Mike's collecting areas. There were forty postal locations at the time: thirty-four active post offices and six sub-offices (one branch, four rural branches, and one station). The thirty-four active post offices broke down into two 1st class offices, seven 2nd class offices, twenty-four 3rd class offices, and one 4th class office. In this issue we will continue our alphabetical listing of the final nineteen post offices.

### **Olmstedville**



Olmstedville is a hamlet in the Town of Minerva. The post office was established on March 3, 1855. Since August 24, 2013, it has been a Remotely Managed Post Office (RMPO) of the Schroon Lake Post Office. The postmaster in 1971 was Shirley Ann McNally (from 1962 to 1995).

### **Paradox**



Paradox is in the eastern part of the Town of Schroon. The postmaster in 1971 was Mary L. Daly who served from 1948 to 1972. On January 6, 1973 Paradox lost its status as an independent 3rd class post office and became a rural station of Ticonderoga.

## Port Henry



Port Henry is one of four post offices in the Town of Moriah. Originally called East Moriah, the name was changed to Port Henry on September 28, 1829. William A. Potskowski was the Postmaster from 1964 to 1972. Since November 1, 2014, Port Henry has been a RMPO of Westport.

## Port Kent



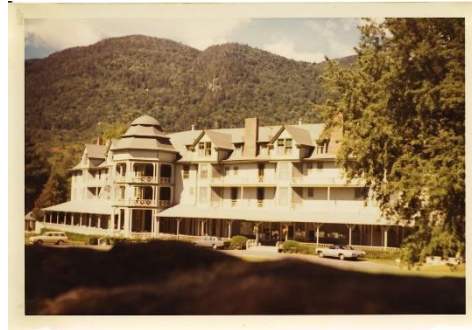
Ruth E. Bolton was the postmaster of Port Kent (Town of Chesterfield) from 1950 to 1980. Port Kent was established on May 27, 1826. Elkanah Watson, the founder of the State Bank of Albany as well as the innovator of the agricultural fair, was the first postmaster. Port Kent has been an RMPO of the Keeseville Post Office since June 1, 2013.

## Ray Brook



Situated between Saranac Lake and Lake Placid, Ray Brook (Town of North Elba) was established on February April 4, 1881. At various times the official name of the post office has varied between one word, Raybrook, and two words, Ray Brook. The name has been Ray Brook since February 25, 1908. Ray Brook has been a RMPO of Saranac Lake since January 10, 2015. The postmaster in 1971 was Elizabeth I. Bruso, serving from 1964 to 1976.

## Saint Huberts



In 1971 Saint Huberts (Town of Keene) was a rural station of Keene Valley located in the Adirondack Club, a large hotel in the southern part of the township. St. Huberts was an independent post office from 1903 to 1959, but then became a rural station. The rural station was also a summer post office and was discontinued sometime in the late 20th century. Emily S. Jaques was in charge of the rural station on July 1, 1971.

## Schroon Lake



Schroon Lake (Town of Schroon) was one of the first post offices in Essex County dating from 1802. Paul Provencha had just become postmaster in 1971 and served until 1992.

## Severance



The Severance post office (Town of Schroon) was established June 14, 1892 and continues in operation today. The postmaster in 1971 was Betty M. Tyrell (until 1983). Severance has been a RMPO of the Schroon Lake post office since March 9, 2013.

## South Schroon



Another post office in the Town of Schroon was South Schroon just north of the Warren County line on US Rte. 9. South Schroon operated from January 28, 1868 to June 8, 1991. G. Wilson Murdock was the postmaster from 1940 to 1973.

## Tahawus



The only postal facility that Mike Peterson missed on July 1, 1971 was Tahawus (Town of Newcomb). The postal name had two variations: Tahawas (1873-74) and Tahawus (1874-1963). It became a rural station of Newcomb in 1963, but I haven't been able to discover when it was discontinued. Tahawus is the Native American name for Mount Marcy, the highest peak in New York State.

## Ticonderoga



Besides Lake Placid, Ticonderoga (Town of Ticonderoga) was the only other 1st class post office in Essex County in 1971. Established in 1816, the postmaster in 1971 was John W.J. McCaughin who served from 1966 to 1972.

## Upper Jay



Upper Jay (Town of Jay) is a small post office on the banks of the Ausable River, between Keene and Jay. The post office was established in 1844 and became a RMPO of the Keene post office on January 11, 2014. The postmaster in 1971 was Margaret Crager who served from 1956 to 1976. Postmaster Crager must not have been in the office when Mike visited since the cover is signed by Mable R. Feitshans, Assistant Postmaster. Feitshans became postmaster from 1976 to 1982.

## Wadhams



The Town of Westport has had only three different post offices in the last 200 years. Wadhams, originally called Wadhams Mills, was first established in 1823 and continued until 1992, with a short time between 1824 and 1826 when it was discontinued. The first day cover is signed by James Ryan, who was postmaster from 1967 to 1992.

## Westport



Westport (Town of Westport) was established in 1816 and has been in operation ever since. The postmaster on July 1, 1971 was Oswald D. Kirkby who served from 1959 to 1975. On a *Excelsior!* March 2020, Whole No. 31/New Series

personal note, Mr. Kirkby was one of the people who got me interested in stamp collecting. He would show a young teenager (me) the new stamps as they came into his office and tell him when they could be bought.

### Whallonsburg



Whallonsburg (Town of Essex) was originally called Split Rock (1817 - 1849) before having its name changed in 1849. The postmaster for 30 years was Polly Ann Crowningshield (from 1960 to 1990). The post office was discontinued in 1990.

### Whiteface



Whiteface (Town of North Elba) was located in the Whiteface Inn on the west shore of Lake Placid. There was another Whiteface post office (1892-1911) in another part of the Town of North Elba, but this Whiteface was established in 1915 and existed as an independent post office until 1959 when it became a branch of the Lake Placid post office, until it was discontinued in 1974. The cover is signed "L. Wilson". I have not been able to discover any more information about L. Wilson.

### Whiteface Mountain



Whiteface Mountain (Town of Wilmington) was located in the ski lodge at the base of state-run Whiteface Skiing Center. Although in the Town of Wilmington and only a few miles from the Wilmington post office, it was a rural branch of the Lake Placid post office. The post office was established in 1962 and discontinued in 1971. I have been unable to find any information about the person who signed the first day cover. He labeled his name with "PM", but stations and branches do not have Postmasters.

### Willsboro



Willsboro (Town of Willsboro) was the first post office established in the area that eventually became Essex County. In 1797 the area was in Clinton County. The original Willsborough post office was probably in the area of the current Essex post office. It moved when the Town of Essex was created from the Town of Willsboro in 1805. Joseph M. Beirne was the postmaster from 1947 to 1972. The building shown in the picture was razed many years ago and a new post office building was established about 1/2 mile south on State Route 22.

### Wilmington



Wilmington (Town of Wilmington) has been in operation since it was established in 1823. The postmaster in 1971 was Joanne E. Zaumetzer who was postmaster from 1971 to 1989. Zaumetzer was also a member the Philatelic Subcommittee of the National Fine Arts Committee at the Olympic Winter Games in Lake Placid in 1980.

## Witherbee



Witherbee (Town of Moriah) was established in 1891 and discontinued in 1994, becoming a Community Post Office (CPO) of Mineville. The postmaster in 1971 was Kathryn C. Lebednik. She was postmaster for about 15 months in 1971 and 1972.

However, there is more to this story. A new Mineville post office was built at about the same time as Witherbee was discontinued, and the Witherbee CPO shared a counter with the Mineville post office. Talking with the Westport postmaster, who remotely manages the Mineville/Witherbee post office, I discovered that although there is technically no longer a Witherbee post office, there is a mailing address for Witherbee. The postmaster told me that the building has two banks of post office boxes: one for Mineville and one for Witherbee. There are actually two sets of numbers in the post office. For instance, a letter could be addressed to P.O. Box 1, Mineville, NY 12956 and go to the Mineville side of the post office while mail addressed to P.O. Box 1, Witherbee 12956 would go to the Witherbee side of the post office.

### Notes:

As mentioned above, in 1971, the forty offices broke down into two 1st class offices, seven 2nd class offices, twenty-four 3rd class offices, one 4th class office, one branch, four rural branches, and one station.

In 2019, there are now ten postmasters who are responsible for twenty-eight post offices, one rural station and one CPU.

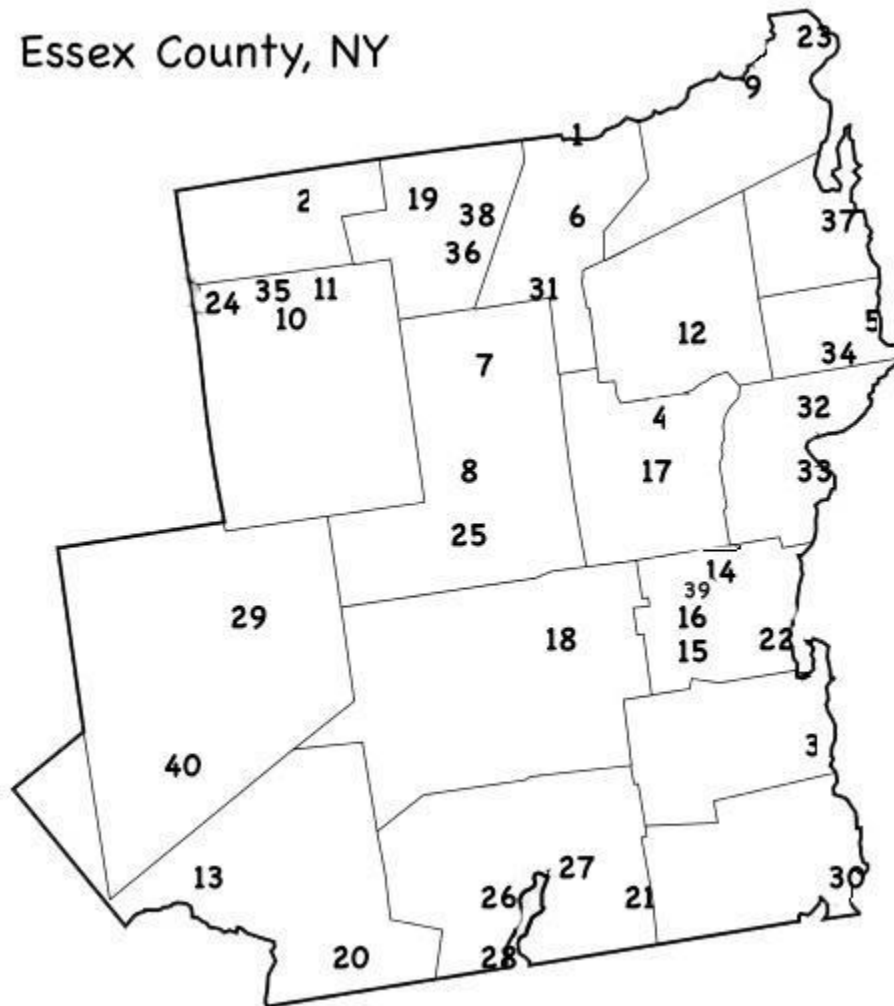
A few of the post offices used both their handstamps and their machine cancels on the covers. The *Postal Bulletin* of May 27, 1971 authorized postmasters to prepare covers ahead of time if necessary, to save time on July 1st.

On the next page one will find a map of all of these post offices in Essex County in 1971. The locations are numbered, with the numbers referring to the specific post office name. Also noted on some of the post office names are asterisks. These denote dead post offices (DPO's) as of 2019.

Glenn Estus may be contacted at [gestus@westelcom.com](mailto:gestus@westelcom.com) .

1-Au Sable Forks	14-Mineville	27-Severance	40-Newcomb
2-Bloomington	15-Moriah	28-South Schroon*	
3-Crown Point	16-Moriah Center	29-Tahawus*	
4-Elizabethtown	17-New Russia	30-Ticonderoga	
5-Essex	18-North Hudson	31-Upper Jay	
6-Jay	19-North Pole	32-Wadhams*	
7-Keene	20-Olmstedville	33-Westport	
8-Keene Valley*	21-Paradox	34-Whallonsburg*	
9-Keeseville	22-Port Henry	35-Whiteface*	
10-Lake Placid	23-Port Kent	36-Whiteface Mountain*	
11-Lake Placid Club*	24-Ray Brook	37-Willsboro	
12-Lewis	25-Saint Huberts*	38-Wilmington	
13-Minerva	26-Schroon Lake	39-Witherbee*	

\* = DPO (2019)

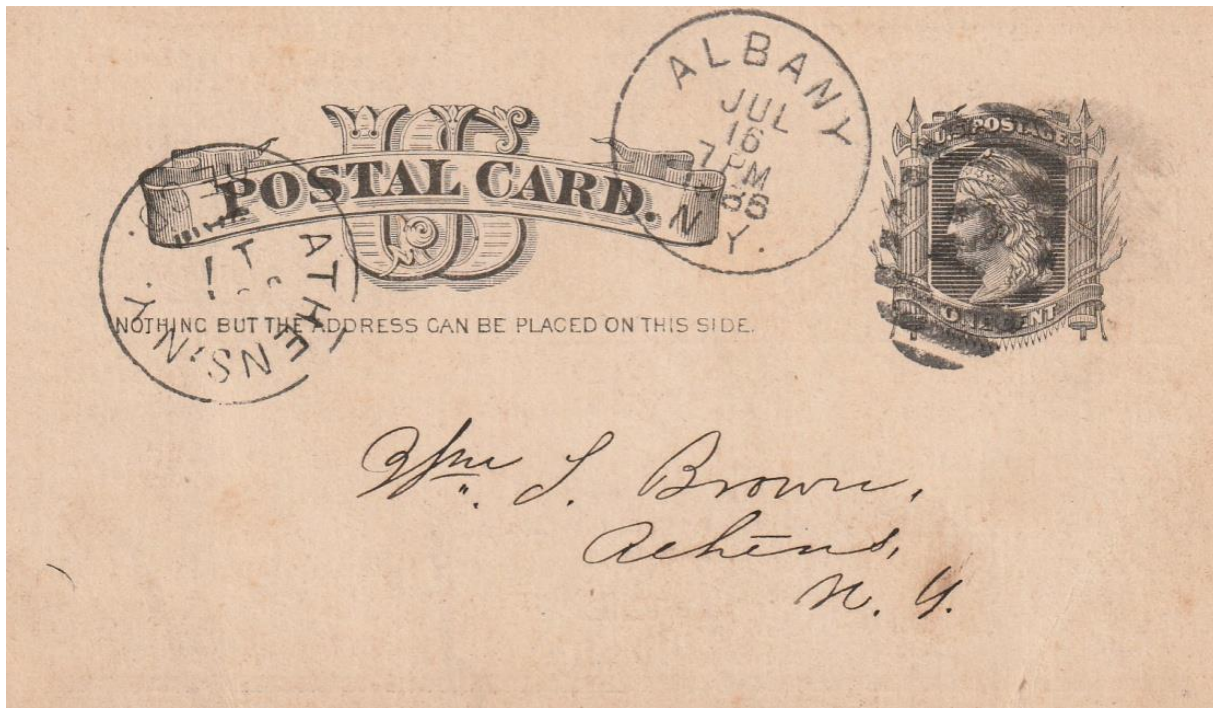


## ***THE ALBANY BOATMEN'S RELIEF ASSOCIATION***

**By: Josh Furman**

Among my philatelic interests are two that involve U.S. postal cards, and both of those are concerned with the cancels that appear on these kinds of cards. The first, of course, is the use of precancels on U.S. postal cards, the subject that was explored in my book on these titled, appropriately, *U.S. Precanceled Postal Cards 1874 – 1961*.

But I also developed an interest in collecting duplex cancels on postal cards. That was what led me to acquire the card pictured in **Figure 1**. It has an Albany N.Y. duplex cancel with a number 2 in the horizontally barred oval. Adding to its interest is the fact that it also has a receiving cancel from Athens, N.Y. on the day after the card was posted in Albany.



**Figure 1.** A postal card bearing an Albany, N.Y. CDS with a duplexed, horizontally barred oval cancel with a number 2 inside, and a receiving cancel from Athens, N.Y. dated the following day.

But when I turned the card over, I was even more impressed with what I saw on the back: an assessment notice from a “Relief Association”. This jumped out at me because I have cards from two other “relief associations”, those from two cities in Maine who used precanceled cards to request their assessments, North Bridgton and South Lewiston. The North Bridgton one was called, “Odd Fellows’ Mutual Relief Association of Maine”, and the South Lewiston’s was called, “Patrons’ Mutual Aid Society of Maine”. And now I find one from Albany, N.Y. that was called “Albany Boatmen’s Relief Association”.

The reverse of my card is seen in **Figure 2**. It turns out that the association was seeking an assessment from one of their members as the result of the death of two fellow members. Details of the deaths are even given! Names, ages, locations, occupations, causes and dates of death, as well as the amounts paid to the beneficiaries of the deceased members are all noted on the card. The recipient of the card had thirty days to pay the assessment, and they could even receive a receipt from the organization, if they so desired.

ASSESSMENT Nos. 222 & 223. Expires Aug. 15th. Members who will act as Agents are requested to correspond with the Secretary.

## ALBANY BOATMEN'S RELIEF ASSOCIATION.

ORGANIZED JAN. 26, 1874. INCORPORATED JAN. 20, 1877.

Office, Room 4 Museum Building,  
Open from 8 to 1 P. M.  
2 to 6 P. M.

ALBANY, N. Y., JULY 16th, 1885.

DEAR SIR:—Within **Thirty Days** from date hereof, you are required to pay into the Treasury of this Association **Two Dollars and Twenty Cents**, on account of the death of the following members:

NAME.	AGE.	RESIDENCE.	OCCUPATION.	CAUSE OF DEATH.	DATE OF MEMBERSHIP.	DIED.	Amount Paid by Deceased
John J. Pender.	47	Albany.	Bar-keeper.	Fatty Degeneration.	Jan. 26th, 1874.	Mar. 7.	\$245.10
John Elmendorf.	65	Albany.	Steamboat Agent.	Apoplexy.	Jan. 26th, 1874.	Mar. 11	248.20

**\$2.20** } REMIT BY MONEY ORDER, CHECK OR REGISTERED LETTER, TO } **EXPIRES**  
Saturday, Aug. 15th, 1885.

**SAMUEL COOK, Secretary.**

Please notify in case of change of residence.  
If you wish a Receipt, return this Card with TWO Cent Stamp.

**Figure 2.** The reverse side of the postal card asking for payment to the association of an assessment of \$2.20 due to the death of two members. According to the card, the assessment was to be paid by August 15<sup>th</sup> of that year. If members wanted a receipt acknowledging their payment, they were to include this card and a two-cent stamp with said payment. Payment was to be made by money order, check, or registered letter to the secretary.

I began to look for more information about this Relief Association. It was not easy to find. But I did locate something about it in a volume called, *The Empire State: its industries and wealth: also an historical and descriptive review of the industries and wealth of the principal cities and towns in Albany, Rensselaer, Saratoga, Schenectady, Columbus, Ulster, Dutchess, Orange, and Westchester counties*, by Warshaw Collection of Business Americana. The publication date was 1888, and the publisher is listed as American Publishing and Engraving Co. of New York. I mention the publication in case others would like to research their interests from this time period. Here is the article on the Albany Boatmen's Relief Association:

*Albany Boatmen's Relief Association, James S. Campbell, President, Samuel Cook, Secretary. — One of the most useful economically managed and honorably conducted of the benefit associations of the State of New York is the "Albany Boatmen's Relief Association." Its mission is one of the most humane and beneficial possible, and since its organization on January 26, 1874, it has had a growth and secured a class of worthy membership. The association was incorporated on January 20, 1877, and its by-laws and regulations are clear, just, and based on the principles of true life insurance, pure and simple, provided without any "extras" or unnecessary expenses whatsoever. The mutual system is here seen at its best.*

*Though known as the "Boatmen's" Association, any citizen in good standing, and in good health, under fifty years of age, can become a member. The membership is largely boatmen and those connected with river pursuits, and no better risks can be had; the rate of mortality is very low, and the assessments are small, and the association is in excellent financial condition, and we would advise all who seek to make sure provision for their families after their death to insure here. The*

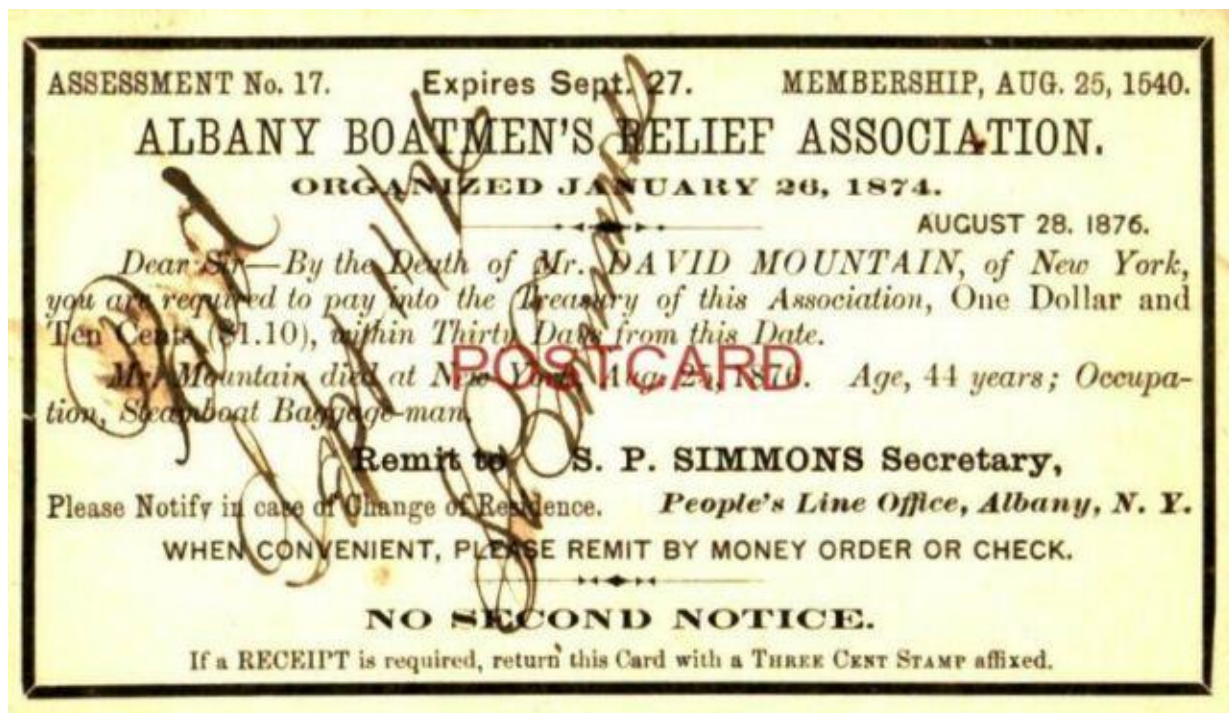
*admission fee is only \$3, and the assessments are very low, being graduated as to ages, from 90 cents to \$1.35, payable at each death, except when there is \$10,000 in the association's treasury, when no assessment is levied. The average amount of life insurance paid over is \$1,500, and the association is in a solid flourishing condition, a purely mutual concern. The officers who are as follows: president, Mr. James R. Campbell, the well-known steamboat agent; Vice-president, Mr. R. B. Rock, influential in commercial circles, and likewise a popular steamboat agent; treasurer, Mr. P. Kinnear, long a prominent brass founder of Albany; secretary, Mr. S. Cook, an energetic and popular officer, who faithfully discharges the duties devolving upon him; the association's attorney is Mr. Galen E. Mitt ...*

In another volume, the *Report on Insurance Business in the United States at the Eleventh Census, 1890* there was a note that this business, the Albany Boatmen's Relief Association was closed in 1889. Unfortunately, I could not find anywhere what the membership of this organization was at any time during its existence. This card represents the 222<sup>nd</sup> and 223<sup>rd</sup> assessments, so there have had to be hundreds more of these notices distributed to members over the fifteen years that this company was in business. I have not seen another card like this one. I did some further searches for Boatmen's Relief Association and didn't find one. I searched for "relief" associations and found many for firemen or firefighters all over the country as well as some for Civil War veterans and folks from other countries. But nary a one for Boatmen's Relief Association. So, it looks like our state, New York, and Albany in particular is unique in tending to Boatmen's relief!

Josh Furman may be contacted at [jfurman@rivercross.com](mailto:jfurman@rivercross.com).

#### Editor's note:

After submitting the original article, the author pointed to the following eBay item which shows a receipt from the association to a member acknowledging payment of his assessment. This one is an early example as seen by the date of January 26, 1874 and the Assessment No. 17.



## THE TRIME HAND CANCEL

By: Glenn A. Estus

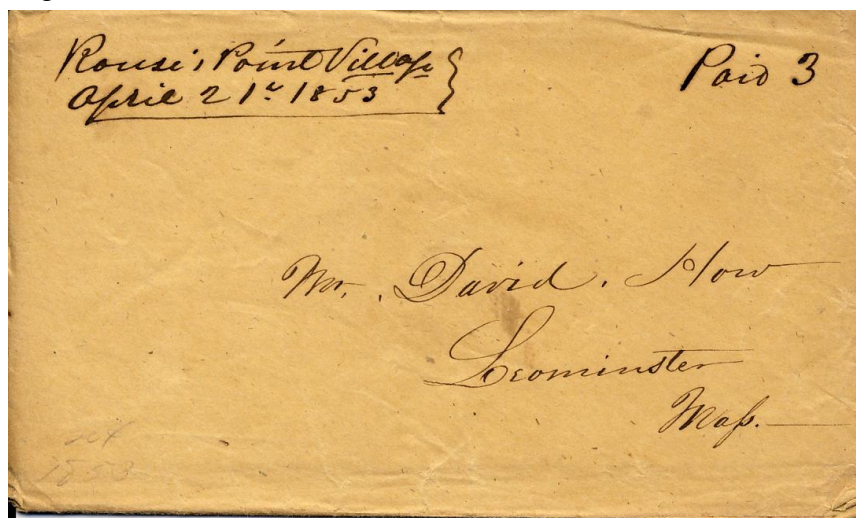
On March 3, 1851, Congress enacted a law that reduced the postage rate, effective July 1, 1851, to 3¢ per half ounce. The law also authorized the minting of a new 3¢ silver coin, the first of two 3¢ coins ever issued by US government. Why? Supposedly to make it easier to pay the 3¢ postage rate. According to Wikipedia, the first coins were smaller than today's dime and were composed of 75% silver and 25% copper so that it would be still considered circulating currency but not have enough silver to make it worthwhile to melt down.

This first new coin, seen in **Figure 1**, which was called a Trime, had a shield on a 6-pointed star on the obverse and a Roman numeral "III" on the reverse. The coin was minted in various compositions from 1851 to 1873.



**Figure 1.** This U.S. silver 3¢ piece, nicknamed a Trime, was minted from 1851 to 1873

Until 1851, there had never been a postage rate from post office to post office less than 5¢. Moreover, the new 3¢ rate covered all of the United States except for those states west of the Rocky Mountains. Previously (since 1845) the cost of a letter in most of the United States was 5¢. The new postage rate amounted to a 40% reduction.



**Figure 2.** Rouses Point Village existed from 1852-1854.

This was a transition period in the use of postage. Postage could be paid via postage stamps or via cash using the older way of marking a letter using a handstamped "PAID". Sometimes this was in manuscript as this example in **Figure 2**, from Rouses Point Village (Clinton County) which could become a tedious job as the number of letters processed increased because of the cheaper rates.

However, many post offices began to use various PAID handstamps including the ubiquitous “PAID 3” in a circle such as this example in **Figure 3** from Napoli (Cattaraugus County) while others including Truxton (Cortland County) used “PAID 3” in an arc, as seen in **Figure 4**.



**Figure 3.** Napoli was discontinued in 1923.



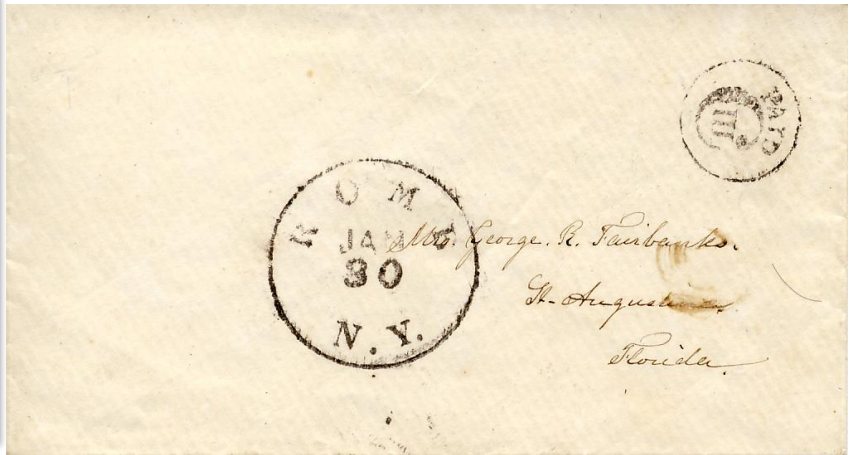
**Figure 4.** Truxton used a fancy arc.

A few post offices used fancy handstamps including those that used a design mimicking the reverse of the new Trime coin. In New York State, the Trime hand cancel was used in at least eight post offices: Green Island (Albany County - **Figure 5**), Lowville (Lewis County), Madison (Madison County), New Hartford\* (Oneida County), New London\* and London\* (Oneida County), Rome\* (Oneida County - **Figure 6**), and Watertown (Jefferson County - **Figure 7**). Examples from the post offices marked with an “\*” may be seen on Dr. James Milgram’s exhibit, “*Fancy Postal Markings on U.S. Stampless*”, on the Classics Society website under the Resources

and Stampless Period section. The Green Island illustration is from Classic Society's online webpage reproducing Hubert Skinner and Amos Eno's book "United States Cancellations 1845-1869."



**Figure 5.** Green Island is now a branch of Troy.



**Figure 6.** The Rome Trime is known only in black ink.



**Figure 7.** The Watertown Trime is known in red, blue and black ink.

Checking the New York pages in the *American Stampless Cover Catalog*, there are listings for Constableville (Lewis County) and Niagara Falls (Niagara County) that may be Trime examples but there are no illustrations to make a positive identification.

I would guesstimate that less than twenty-five post offices nationwide used a Trime marking including six from Vermont, three from Ohio and one each from Alabama, Indiana, Iowa, Texas, and Wisconsin.

Glenn Estus may be contacted at [gestus@westelcom.com](mailto:gestus@westelcom.com).

## ***NEW YORKER BY BIRTH, FLORIDIAN BY CHANCE -- AND CHOICE***

**By: Francis Ferguson**

I was born in 1959 in Utica and spent my first ten and a half years being cold more than warm. Thankfully my parents decamped for south Florida, where I became a resident on January 1, 1970. While I enjoy the occasional dip into the cool range of temperatures, after living in Florida for fifty years, anything below sixty degrees is just cold to my way of thinking. Oddly enough I enjoy the Adirondack mountains (Spring to Fall only) – as much as I do the ocean.

My father's side of the family is a mix of Irish and Scottish and settled in the region around Cortland – how and when they arrived in that area is shrouded in mystery as there are no family records to consult. My mother's side of the family has more concrete history – up to a point. While my mother was born in 1925 in Clark Mills (one of 8 children) her parents were from the hills to the north of Beirut, Lebanon. Yes, I have a very mixed family gene pool!

I am first and foremost a stamp collector; ever since I was a youngster. My teenage years helped to instill a love of classic US stamps – with a special focus on Washington-Franklin material. The college and starting years of my career sidetracked my collecting, but I did return to the fold in the summer of 1998 – mostly because of eBay. I had decided to finally get rid of all the stuff I had been hauling around every time I moved. While the intention was pure -- the heart was weak, and I was bit hard again by US classic stamps. I sold off all the ancillary material that was of no interest any longer and focused on the classic period of US material. Oh! This was fun again.

Over the years I have added specialized areas of collecting like small towns in the Utica area. (Clark Mills, Clinton, Westmorland, New Hartford, Holland Patent, Poland, etc.) Most of what I collect in the area of New York postal history is directly or indirectly connected to my family. **Figure 1** and **Figure 2** show the front and back of a cut-down picture postcard that was gifted to me from a cousin in Cortland. I was thrilled to see the addressee of the postcard as being Mrs. William Ferguson, at a “Morava” address, who was the wife of the brother of my grandfather Archbold Ferguson. The postcard shows a Cortland NY cancel dated May 13, 1908. The town name is spelled wrong in the address. Moravia was founded in 1789 and remains a small town even today.



**Figure 1.** Front of the post card mailed from Cortland, N.Y. to William Ferguson in Moravia, N.Y.

I never met my paternal grandfather, his brother or his wife. My only connection, as a youth to the previous generation, was my paternal grandmother who lived in Cortland. The picture side shows what appears to be a recently constructed house with two individuals and a dog. There is no one left to identify the people in the photo, let alone the dog!



**Figure 2.** The reverse of the post card showing a couple and a dog in front of a house in Cortland, N.Y.

At shows I am always on the lookout in the dollar boxes of covers for a mailing with my mother's hat shop. Amelia Hats was in downtown Utica next to the Stanley Theater from 1948 until the summer of 1969. I have yet to find even a single example – even though over the twenty-one years she had to have mailed tens of thousands of monthly invoices for her “on-account” customers. The search continues.

I hope to continue to provide an article for every issue from this point forward, as I am in the process of dialing-back my active philatelic involvements -- which will allow for time to write.

Until next time, enjoy your stamp collection and be kind above all else.

Francis Ferguson may be contacted at [fergapk@gmail.com](mailto:fergapk@gmail.com).

## ***CHANGES TO SMITH/KAY SINCE 1980***

**By: Glenn A. Estus**

Using the USPS Postmaster Finder, the USPS Post Office Locator, and the online *Postal Bulletin*, I have created a listing of changes to post offices since the publication of Smith and Kay's *New York Postal History: The Post Offices and First Postmasters from 1775 to 1980*.

It should be noted that this listing only includes independent post offices. A study of Community Post Offices, Branches, etc. are not included in this listing. I hope that this information will be of use to a few of our fellow members of the Empire State Postal History Society.

### **Independent Post Offices Established since 1980:**

#### **Ontario County:**

**Bloomfield (14469):** October 3, 1994 (from Holcomb) (Postal Bulletin 21880).

### **Independent Post Offices Discontinued since 1980:**

#### **Albany County:**

**Knox:** Service suspended on November 10, 2012. Discontinued August 12, 2017; mail to Altamont.

**New Scotland:** Service suspended October 28, 1988; mail to Slingerland. Discontinued December 11, 1989; mail to Slingerlands, (Postal Bulletin 21761).

**South Westerlo:** Service suspended on May 29, 1992. Discontinued December 9, 1995; mail to Greenville, (Postal Bulletin 21906).

**West Berne:** Discontinued June 20, 1980 (Postal Bulletin 21245).

#### **Allegany County:**

**Alma:** Service suspended on March 31, 1995. Discontinued July 20, 1996; mail to Bolivar (Postal Bulletin 21925).

**Rosburgh:** Service suspended on December 27, 1991.

#### **Broome County:**

**Ouaquaga:** Service suspended on March 1, 1986. Discontinued March 11, 1989; converted to a community, post office of Harpursville (Postal Bulletin 21720).

**Sanitaria Springs:** Discontinued July 19, 1986; mail to Port Crane (Postal Bulletin 21570).

#### **Cattaraugus County:**

**East Randolph:** Service suspended on May 24, 2013. Discontinued August 12, 2017; mail to Randolph.

**Knapp Creek:** Discontinued November 23, 1996; mail to Olean (Postal Bulletin 21942).

**Leon:** Service suspended on August 15, 2009. Discontinued July 24, 2010; mail to Conewango Valley (Postal Bulletin 22292).

**Sandusky:** Service suspended on January 28, 1995. Discontinued June 8, 1996; mail to Freedom, (Postal Bulletin 21925).

#### **Cayuga County:**

**Owasco:** Service suspended on July 30, 1988. Discontinued June 27, 1992; mail to Auburn (Postal Bulletin 21816).

**Sennett:** Service suspended on November 1, 1989. Discontinued January 23, 1993; mail to Auburn.

**Venice Center:** Discontinued June 14, 1988; mail to Scipio Center (Postal Bulletin 21688).

#### **Chautauqua County:**

**Maple Springs:** Service suspended on April 27, 1996. Discontinued January 24, 1998; community post office of Dewittville established (Postal Bulletin 21974).

**North Clymer:** Service suspended on June 23, 1995. Discontinued May 24, 1997; mail to Panama, (Postal Bulletin 21960).

#### **Chenango County:**

**Brisbane:** Discontinued April 12, 1985; mail to Oxford (Postal Bulletin 21510).

**East Phasalia:** Service suspended on April 30, 1997. Discontinued September 28, 2002; mail to McDonough (Postal Bulletin 22086).

**Holmesville:** Service suspended on September 10, 1988. Discontinued June 1, 1991; mail to South New Berlin (Postal Bulletin 21788).

#### **Columbia County:**

**Lebanon Springs:** Discontinued November 27, 1993; mail to New Lebanon (Postal Bulletin 21854).

**New Lebanon Center:** Service suspended February 16, 1985; mail to New Lebanon. Discontinued December 3, 1988 (Postal Bulletin 21699).

**Stockport:** Not listed in USPS Postmaster Finder, USPS Post Office Locator or Postal Bulletin Index.

**West Copake:** Discontinued September 24, 1988; establish a community post office (Postal Bulletin 21692).

#### **Cortland County:**

**East Freetown:** Service suspended on October 29, 1993. Discontinued June 7, 1997; mail to Cincinnatus (Postal Bulletin 21948).

**Cuyler:** Discontinued January 20, 1996; mail to Truxton (Postal Bulletin 21948).

**East Homer:** Discontinued June 17, 1995; converted to a community post office of Truxton (Postal Bulletin 21903).

**Harford:** Service suspended on April 20, 1990. Discontinued October 30, 1993; mail to Richford (Postal Bulletin 21853) (Postal Bulletin 22177).

**Harford Mills:** Loss of quarters, office temporarily suspended. Close of business, November 30, 1987. All stock shipped. All money banked. All accountables removed. Discontinued November 1, 1990; mail to Richford (Postal Bulletin 21776) (Postal Bulletin 21778).

#### **Delaware County:**

**Bovina Center:** Service suspended on October 29, 1993. Discontinued May 15, 1996; converted to a community post office of Andes (Postal Bulletin 21923).

**Cadosia:** Discontinued March 28, 1986; mail to Hancock (Postal Bulletin 21557).

**Cooks Falls:** Discontinued November 15, 1986 (Postal Bulletin 21593, 11/13/1986). Discontinued November 15, 1987 (Postal Bulletin 21645, 11/12/1987).

**Delancey:** Service suspended on October 29, 1993. Discontinued January 3, 2004; mail to Delhi. The spelling of **De Lancey** was changed to **Delancey** on July 26, 2004 (Postal Bulletin 22134).

**Kelly Corners:** Service suspended on March 31, 1988. Discontinued October 29, 1988; mail to Margaretville, (Postal Bulletin 21700, 21702).

**Meredith:** Discontinued March 28, 1986; mail to Delhi (Postal Bulletin 21557).

**Shinhopple:** Service suspended on April 6, 1990. Discontinued July 31, 1993; mail to Downsville (Postal Bulletin 21851, 22305).

**South Kortright:** Service suspended on March 2, 2009. Discontinued August 12, 2017; mail to Stamford.  
**Treadwell:** Discontinued August 15, 1986; mail to Franklin (Postal Bulletin 21580).

**Dutchess County:**

**Annandale-on-Hudson:** Discontinued June 1, 1982; converted to a community post office of Red Hook (Postal Bulletin 21348).

**New Hamburg:** Discontinued November 15, 1986 (Postal Bulletin 21593).

**Erie County:**

**Crittenden:** Service suspended on January 31, 2011. Discontinued August 12, 2017; mail to Alden.

**Helmuth:** Service suspended on July 29, 1994. Discontinued September 16, 1995; mail to Collins (Postal Bulletin 21903).

**Main Village:** Not listed in USPS Postmaster Finder or USPS Post Office Locator.

**Sardinia:** Service temporarily suspended from July 29, 1995, to March 31, 1999 (Forms 8020).

**Swormville:** Discontinued February 1, 1988; mail to East Amherst (Postal Bulletin 21658).

**Essex County:**

**Keene Valley:** Discontinued March 9, 2013; mail to Keene (Postal Bulletin 22363).

**South Schroon:** Service suspended on March 4, 1988. Discontinued June 8, 1991; mail to Schroon Lake (Postal Bulletin 21791).

**Wadhams:** Service suspended on September 18, 1992. Discontinued November 5, 1994; mail to Westport (Postal Bulletin 21881).

**Whallonsburg:** Service suspended on June 28, 1990. Discontinued September 23, 1995; mail to Essex (Postal Bulletin 21903).

**Witherbee:** Service suspended on October 10, 1989. Discontinued January 1, 1994; converted to a community post office of Mineville (Postal Bulletin 21863).

**Franklin County:**

**Whippleville:** Service suspended; office moved to contract station 6/26/87. Discontinued October 14, 1989; mail to Malone (Postal Bulletin 21755), (Postal Bulletin 22177).

**Genesee County:**

**Alabama:** Service suspended on July 17, 1987. Discontinued October 12, 2002; mail to Basom (Postal Bulletin 22098).

**East Bethany:** Converted to a Remotely Managed Post Office under the direction of the Postmaster of the Batavia Post Office on October 18, 2014. Service suspended on September 4, 2015.

**Greene County:**

**Cementon:** Service suspended on August 11, 1993. Discontinued October 14, 1995; mail to Catskill (Postal Bulletin 21904).

**Durham:** Discontinued July 11, 1987; converted to a community post office of Oak Hill (Postal Bulletin 21670).

**East Jewett:** Discontinued October 18, 1986; mail to Tannersville (Postal Bulletin 21688) *check more on this one.*

**Halcott Center:** Service suspended on June 29, 1984. Discontinued May 31, 1986; mail to Fleischmanns (Postal Bulletin 21568).

**Norton Hill:** Service suspended on February 25, 1993. Discontinued December 7, 1996; mail to Greenville (Postal Bulletin 21935).

**Purling:** Service suspended on September 12, 1992. Discontinued December 24, 2005; mail to Cairo (Postal Bulletin 22180).

**Surprise:** Service suspended on October 8, 1988. Discontinued April 30, 2011; mail to Earlton (Postal Bulletin 22311).

**West Coxsackie:** Discontinued May 20, 1985; converted to Community Post Office (Postal Bulletin 21519).

#### **Hamilton County:**

**Piseco:** Discontinued January 23, 1993; converted to a classified station of Lake Pleasant.

**Sabael:** Discontinued March 9, 2013; mail to Indian Lake (Postal Bulletin 22363).

#### **Herkimer County:**

**Fairfield:** Discontinued January 20, 1995; mail to Middleville (Postal Bulletin 21903).

**Middleville:** Service suspended on July 30, 2010. Discontinued August 12, 2017; mail to Newport.

**Thendara:** Beginning June 2, 1992, this post office was under the administration of Mary R. Charney, Postmaster of the Old Forge Post Office. Discontinued January 1, 1994; mail to Old Forge (Postal Bulletin 21859, 1/20/94).

#### **Jefferson County:**

**Deferiet:** Service suspended on August 31, 2012. Discontinued August 12, 2017; mail to Great Bend.

**Fineview:** Converted to community post office of Thousand Island Park on July 1, 1989. Reestablished as a post office on October 10, 1990.

**Herrings:** No information on USPS Postmaster Finder or Post Office Locator.

**Limerick:** Service suspended on December 12, 1994. Discontinued June 1, 1998; mail to Dexter, (Postal Bulletin 22006).

**Plessis:** Service suspended on December 31, 2007. Post Office Discontinued March 26, 2011; mail to Theresa (Postal Bulletin 22308).

**Smithville:** The postmaster retired, and service was temporarily suspended on August 23, 1985. Post office was closed a year later. Mail now being handled at Adams NY. (Information from Jack McMahon, AOC, Syracuse MSC) Discontinued July 16, 1988 (Postal Bulletin 21692).

**South Rutland:** Service suspended on October 29, 1993. Discontinued September 28, 2002; mail to Copenhagen (Postal Bulletin 22090).

**Woodville:** Discontinued August 10, 1991; mail to Henderson (Postal Bulletin 21796).

#### **Lewis County:**

**Barnes Corners:** Service suspended on September 1, 1985. Discontinued May 10, 1988; mail to Rodman (Postal Bulletin 21688).

**Brantingham:** Discontinued July 10, 1993; converted to a community post office of Glenfield (Postal Bulletin 21851).

**Deer River:** Service suspended on February 28, 1991. Discontinued June 4, 1994; converted to a community post office of Copenhagen (Postal Bulletin 21878).

**Greig:** Service suspended on November 30, 2002. Discontinued August 25, 2007; mail to Glenfield (Postal Bulletin 22231).

**New Bremen:** Discontinued August 5, 1989; mail to Rowville (Postal Bulletin 21748).

#### **Livingston County:**

**Caledonia:** Discontinued March 9, 2013; mail to Mumford (Postal Bulletin 22360).

**Linwood:** Service suspended on August 24, 1990. Discontinued February 6, 1993; mail to Pavilion (Postal Bulletin 21832, 21850).

**South Lima:** Service suspended on November 15, 2008. Discontinued April 17, 2010; mail to Livonia (Postal Bulletin 22286).

**Tuscarora:** Discontinued November 12, 1988 (Postal Bulletin 21699).

**Wadsworth:** Not listed in USPS Postmaster Finder or Post Office Locator.

**Webster Crossing:** Discontinued February 14, 1998; mail to Springwater (Postal Bulletin 21971).

#### **Madison County:**

**Bouckville:** Service suspended on November 10, 2012. Discontinued August 12, 2017; mail to Madison.

**Lebanon:** Service suspended on October 2, 1992. Discontinued December 31, 1994; mail to Earlville (Postal Bulletin 21887).

**North Brookfield:** Service suspended on May 2, 2003. Discontinued November 25, 2006; mail to Brookfield (Postal Bulletin 22196).

**Perryville:** Discontinued May 20, 1995; mail to Canastota (Postal Bulletin 21901).

**Poolville:** Service suspended on April 1, 1993. Discontinued May 1, 1995; mail to Earlville (Postal Bulletin 21892).

**Pratts Hollow:** Service suspended on September 28, 1992. Discontinued December 31, 1994; mail to Munnsville (Postal Bulletin 21886).

**Sheds:** Service suspended on October 20, 1989. Discontinued January 23, 1993; mail to New Woodstock (Postal Bulletin 21831, 22305).

**Solsville:** Service suspended on February 2, 2001. Discontinued January 3, 2004; mail to Madison (Postal Bulletin 22137).

#### **Monroe County:**

**Industry:** Discontinued January 24, 1998; mail to Rush (Postal Bulletin 21971).

**West Rush:** Service suspended on December 25, 1986. Discontinued August 27, 1988 (Postal Bulletin 21680).

#### **Montgomery County:**

**Fort Hunter:** Service suspended on September 13, 2011. Discontinued August 12, 2017; mail to Amsterdam.

#### **Nassau County:**

**Garden City Park:** No mention on USPS Postmaster Finder or Post Office Locator.

#### **Niagara County:**

**Burt:** Service suspended on June 6, 1997. Discontinued October 23, 2004; mail to Newline (Postal Bulletin 22237).

**Stella Niagara:** Service suspended on June 21, 1996. Discontinued July 19, 1997; mail to Lewiston (Postal Bulletin 21953).

#### **Oneida County:**

**Knoxboro:** Service suspended on December 30, 2012. Discontinued August 12, 2017; mail to Oriskany Falls.

**McConnorsville:** Discontinued February 26, 1994; mail to Blossvale (Postal Bulletin 21863, 21880).

**North Western:** Service suspended on April 25, 1990. Discontinued February 1, 1992; mail to Westernville (Postal Bulletin 21808).

**Paris:** Service suspended on August 2, 1991. Discontinued June 11, 1994; mail to Sauquoit (Postal Bulletin 21881).

**Paris Station:** Discontinued June 3, 1986; mail to Sauquoit (Postal Bulletin 21568).

**Onondaga County:**

**Cicero:** Discontinued December 26, 1990; mail to Clay (Postal Bulletin 21788).

**Hart Lot:** Discontinued January 22, 1982; mail to Elbridge (Postal Bulletin 21336, 1/28/82).

**Lysander:** Service suspended on May 19, 1993. Discontinued April 20, 1996; mail to Baldwinsville (Postal Bulletin 21923).

**Mottville:** Service suspended on July 16, 1988. Discontinued June 27, 1992; converted to a community post office of Skaneateles Falls (Postal Bulletin 21816).

**Oran:** Discontinued January 20, 1996; mail to Manilas (Postal Bulletin 21948).

**Ontario County:**

**East Bloomfield:** Discontinued February 10, 1996; mail to Bloomfield (Postal Bulletin 21921, 21923).

**Holcomb:** Discontinued October 3, 1994; name changed to Bloomfield (Postal Bulletin 21880).

**Orange County:**

**Arden:** Not listed in USPS sites., last mention was 2000 (Officer in Charge).

**Godeffroy:** Emergency suspension of service February 28, 1990. Discontinued October 5, 2002; mail to Cuddebackville (Postal Bulletin 22091).

**Sterling Forest:** Last mention was 2000 (Officer in Charge). Not listed in Post Office Locator.

**Orleans County:**

**Eagle Harbor:** Discontinued January 18, 1997; mail to Albion (Postal Bulletin 21942).

**Hulberton:** Discontinued October 8, 1984; mail to Holley (Postal Bulletin 21473).

**Knowlesville:** Service suspended on August 1, 2008. Discontinued July 4, 2009; mail to Albion (Postal Bulletin 22266).

**Oswego County:**

**Maple View:** Service suspended on May 12, 1990. Discontinued July 17, 1993; converted to a community post office of Parish (Postal Bulletins 21851, 21884)(Postal Bulletin 22174).

**Otsego County:**

**East Springfield:** Service suspended on January 6, 1989. Discontinued January 23, 1993; converted to a community post office of Richfield Springs (Postal Bulletin 21836, 22305).

**Garrattsville:** Service suspended on November 15, 1991. Discontinued August 5, 1995; converted to a community post office of Burlington Flats (Postal Bulletin 21898).

**Hartwick Seminary:** Service suspended on September 29, 1992. Discontinued December 31, 1994; mail to Cooperstown (Postal Bulletin 21886, 21887).

**New Lisbon:** Service suspended on October 13, 1995. Discontinued January 3, 2004; mail to Burlington Flats (Postal Bulletin 22137).

**Roseboom:** Discontinued April 9, 1998; mail to Cherry Valley (Postal Bulletin 22036).

**South Edmeston:** Discontinued August 5, 1995; mail to New Berlin (Postal Bulletin 21900).

**West Exeter:** Discontinued December 31, 1994; mail to West Winfield (Postal Bulletin 21886).

**Rensselaer County:**

**Brookview:** Service suspended on August 14, 1990. Discontinued July 27, 1996; mail to Casleton (Postal Bulletin 21935).

**Buskirk:** Service suspended on May 15, 1997. Discontinued October 23, 2002; mail to Eagle Bridge (Postal Bulletin 22086).

**Cherryplain:** Name was changed to Cherry Plain on August 30, 1983.

**South Schodack:** Service suspended on February 27, 1990. Discontinued June 6, 1998; mail to Castletown (Postal Bulletin 22036).

**Stephentown Center:** Service suspended (loss of quarters) September 1, 1980. Discontinued effective December 21, 1983. Retain ZIP 12168. Add to Stepentown NY. (PB 21433, 11/24/83).

**Saint Lawrence County:**

**Balmat:** Service suspended on May 17, 1991. Discontinued January 29, 1994; mail to Gouverneur (Postal Bulletin 21863, 22305).

**Childwold:** Service suspended on May 25, 2009. Discontinued August 12, 2017; mail to Tupper Lake.

**DeGrasse:** Discontinued February 18, 1983 (Postal Bulletin 21387).

**Lawrenceville:** Service suspended on December 15, 1993. Discontinued January 3, 2004; mail to North Lawrence, ( Postal Bulletin 22132).

**Oswegatchie:** Service suspended on December 15, 1993. Discontinued January 3, 2004; mail to Oswegatchie ( Postal Bulletin 22138).

**Saratoga County:**

**Ballston Lake:** Discontinued May 15, 1993; converted to a community post office of Burnt Hills (Postal Bulletin 21840).

**Schenectady County:**

**Quaker Street:** Service suspended by December 2008. Discontinued May 19, 2018; mail to Delanson.

**Schoharie County:**

**Dorloo:** Service suspended on August 4, 1986, per PS Form 2030. Discontinued January 21, 1989; mail to Cobleskill, (Postal Bulletin 21707, 1/12/1989).

**Lawyersville:** Service suspended on June 15, 1994. Discontinued April 5, 1997; mail to Cobleskill (Postal Bulletin 21942).

**Seward:** Discontinued June 30, 1980 (Postal Bulletin 21247).

**Schuyler County:**

**Valois:** Discontinued October 3, 1998; mail to Hector (Postal Bulletin 21982).

**Seneca County:**

**Hayt Corners:** Discontinued September 6, 1985 (Postal Bulletin 21531).

**MacDougall:** Discontinued July 8, 1985 (Postal Bulletin 21405).

**Steuben County:**

**Cameron:** Service suspended on November 14, 1998. Discontinued September 10, 2005; mail to Cameron Mills ( Postal Bulletin 22172).

**North Cohocton:** Discontinued April 13, 1996; mail to Atlanta (Postal Bulletin 21921).

**Wallace:** Discontinued April 4, 1986; mail to Avoca (Postal Bulletin 21557).

**Sullivan County:**

**Lewbeach:** Service suspended on December 15, 1989. Discontinued March 16, 1996; mail to Livingston Manor (Postal Bulletin 21939).

**Mileses:** Discontinued October 13, 1984 (Postal Bulletin 21476).

**Saint Josephs:** Discontinued August 1, 1985 (listed in Postal Bulletin 21441 as Saint Joseph without the final "s").

**Tioga County:**

**Barton:** Service suspended on September 13, 2011. Discontinued August 12, 2017; mail to Nichols.

**Smithboro:** Service suspended on November 30, 2007. Post Office Discontinued March 26, 2011; mail to Barton (Postal Bulletin 22308).

**Tioga Center:** Service suspended on September 13, 2011. Discontinued August 12, 2017; mail to Nichols.

**Tompkins County:**

**West Danby:** Service suspended on November 4, 1994. Discontinued July 19, 1997; mail to Spencer (Postal Bulletin 21951).

**Ulster County:**

**Eddyville:** Discontinued August 27, 1988 (Postal Bulletin 21712, 2-16-89).

**Krumville:** Service suspended on August 31, 1976. Discontinued September 1, 1981 (Postal Bulletin 21304).

**Oliverea:** Service suspended on March 25, 1989. Discontinued September 12, 1992; mail to Big Indian (Postal Bulletin 21820, 7-23-92).

**Shady:** Service suspended on April 27, 1984. Discontinued July 30, 1988; mail to Bearsville (Postal Bulletin 21680).

**Washington County:**

**East Greenwich:** Discontinued January 20, 1995; mail to Salem (Postal Bulletin 21903).

**Wayne County:**

**East Palmyra:** Service suspended on July 21, 1995. Discontinued September 20, 1997; mail to Newark (Postal Bulletin 21971).

**Sodus Center:** Service suspended on September 30, 1992. Discontinued November 25, 1995; mail to Sodus (Postal Bulletin 21908).

**Wyoming County:**

**Cowlesville:** Service suspended on October 14, 1995. Discontinued December 27, 2003; mail to Attica (Postal Bulletin 22120).

**Yates County:**

**Bluff Point:** Office closed temporarily on January 21, 1983. Discontinued October 1, 1984; mail to Keuka Park. (Postal Bulletin 21473).

**Branchport:** Service suspended on August 31, 1991. Discontinued November 23, 1996; converted to a community post office of Keuka Park (Postal Bulletin 21932).

**Himrod:** Service was temporarily suspended from October 16, 1999 to May 11, 2000.

Glenn Estus may be contacted at [gestus@westelcom.com](mailto:gestus@westelcom.com).

## COVER OF THE ISSUE

By: David E. Williams

They say you never know what you will find on the Internet, or in this case, on eBay. Such was the case with this cover. I get daily update emails from eBay for certain favorite sellers of mine. One such seller is a fellow ESPHS member; George DeKornfeld.

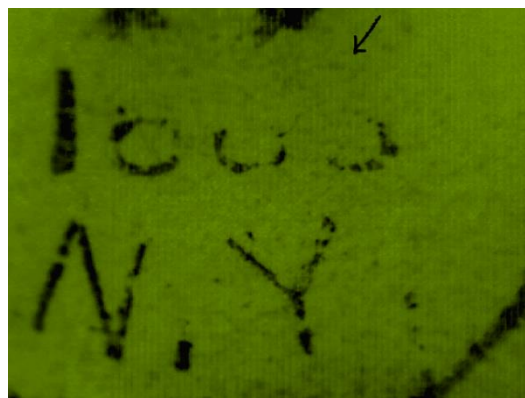
One day, a month or so ago, I was searching some of George's recent listings. The cover in **Figure 1** jumped out at me for several reasons. First, it was mailed from Binghamton, N.Y., one of my collecting specialties. Second, the two different color stamps provided additional interest. The 2¢ vermillion stamp was issued in 1879, while the 1¢ re-engraved gray blue stamp was issued in August of 1881. I purchased it, scanned it and went to add it to my website. But I needed to try to determine the year this cover was mailed before posting it on the appropriate page of my site.



**Figure 1.** A nice bi-colored cover mailed from Binghamton, N.Y. to Oxford, N.Y.

There was a faint Oxford, N.Y. receiving mark on the back of the cover. The first three digits of the year were clearly “188. However, the last digit of the year was mostly indistinguishable. Simple magnification did not help.

Then I remembered having a graphics imaging software, which sometimes allows manipulation of an image to bring out more details. The software is called Gimp 2, and if I recall correctly may be downloaded for free. It allows the use of color filters, lighting and contrast variations to enhance an image. After trying many different combinations of techniques, I ended up with the image seen here. If one looks near the top where I have drawn an arrow, one can see a faint horizontal line and on the right end of that line, a partial diagonal line, representing a “3”. The mystery was solved! The year of mailing was 1883.



David Williams may be contacted at [davidinindiana@aol.com](mailto:davidinindiana@aol.com).