



## NEWSLETTER

**No.9**

**June 1983**

# LONG ISLAND POSTAL HISTORY SOCIETY

## PRESIDENT'S MESSAGE

Those of you who missed our Spring meeting at Carl Baker's home missed a great get together! It was held on a nice sunny Saturday afternoon (June 11) on Carl's patio. Carl served a delicious lunch. We then got down to business, passing around albums of Long Island covers, showing off new acquisitions, and swapping fish stories about the ones that got away. Outstanding albums included those of Art Fitzpatrick on the North Fork, Carl Baker's Long Island corner cards, and Dan Knowles' L.I.R.R. and Sag Harbor covers. We ended reluctantly with a short business meeting.

Cal Hahn and Dan Knowles have just brought out a new edition of our Journal, and Fred Rodriguez is doing an admirable job with the Newsletter. Both publications thrive on material sent in by our members. Please make a point of sending in at least one article this coming year, no matter how short.

Brad Arch has come up with another terrific mail auction. Details are in this Newsletter. This is a great opportunity to pick up some attractive Long Island covers and obtain some of those missing town cancels in your collection. I urge you all to bid in the auction.

Our next meeting will be our Annual Meeting, and will be held at LISDA in Hempstead in the Fall. We plan to have a booth again, as we had last year. Art Fitzpatrick has generously offered to oversee manning the booth again.

See you at LISDA!

John Price, President

SECRETARY'S NOTES

We are pleased to welcome the following as a new member of our Society:

Mrs. Emma G. Koberg

295 Hamilton St., Apt. 22,

Geneva, New York 14456

Change of address:

David W. Snow

To: 130 North 9th St.,

Lindenhurst, N.Y. 11757

William R. Gibson

To: 650 Shore Road, Apt. 3L,

Long Beach, N.Y. 11561

\* \* \* \* \*

On June 11 a pleasant meeting was held at Carl Baker's home in Northport. After a brief review of our current status, preliminary plans were outlined for our Annual Meeting to be held at the LISDA Show in Hempstead. This year LISDA will be held at the usual location, the Holiday Inn Convention Center in Hempstead from Friday Nov. 11 through Sunday Nov. 13th. Friday the 11th is an official holiday, thus we should expect greater attendance on that first day than in the past. We certainly hope to see a lot of LIPHS members at LISDA '83.

Art Fitzpatrick



EDITOR'S NOTES  
\*\*\*\*\*

It is impressive to see that members of our Society are in the philatelic news constantly. Our membership has a growing group of active postal historians and some very skillful writers. A sampling of recent news items follows.

In the April 25th issue of Linn's Stamp News we notice that member Dr. Leon Cheris has won, for the second consecutive year, the American First Day Cover Society Phillip H. Ward, Jr. memorial award for his continuing series "Postal History: Experimental Tagged FDCs 1963-1973." This annual award is given annually for excellence in first day cover literature. All of us join in congratulating Dr. Cheris.

Member Falk Finkelberg, a well-known philatelist, displayed and discussed his collection of proofs and essays at the U.S. Classic Society meeting at the Collector's Club in New York.

We read in Linn's of May 2nd that member Henry S. Stollnitz garnered the top awards at ROPEX '83. Stollnitz, a member of the Philatelic Foundation's board of trustees, won the ROPEX Grand Award for his exhibit entitled "U.S. Postal Markings 1845-1851." He is now eligible to compete in the 1983 Champion of Champions competition. His exhibit also won him a gold medal from the American Philatelic Society. We congratulate Henry and wish him continued success.

Needless to say, member Calvet Hahn is frequently in the news as a regular contributor in the Stamp Collector magazine, and other philatelic periodicals of merit. His articles are extremely interesting and well researched. His recent articles about Way Letters were excellent.

I certainly hope that our members will take a more active role in their philatelic endeavors, as well as contribute to the LIPHS Newsletter and the Journal.

J. Fred Rodriguez





FLANDERS - This post office was established on May 8, 1834 under Jesse Hallock as its first postmaster. Flanders is a little community in Riverhead Township and once was a mecca for summer boarders, being on Peconic Bay. It had its own post office until April 30, 1929 when the Riverhead P.O. began to provide postal services directly to the community.

The cover illustrated below bears a manuscript "Flanders NY Feb 23" in blue ink. Scott No. 10, the 3cent orange brown, is cancelled by an "X" in blue ink. The cover is addressed to Westhampton, Beaver Dam PO. There is no record of a Beaver Dam PO on Long Island, however it is entirely possible that the Beaver Dam P.O. was an unofficial post office set up to provide the mails to the local inhabitants when the Westhampton P.O. was discontinued and service provided by the Speonk P.O. Beaver Dam was located between Speonk and Westhampton and the mails were sent to those post offices and brought to Beaver Dam by horse or stage. At the time this cover was posted (circa 1854) the Westhampton area was being serviced by the Speonk P.O. established on April 8, 1828, the same day the Westhampton P.O. was closed. Later in 1861 the Speonk P.O. was closed and the Westhampton office reestablished. However, it was not long before the Speonk P.O. was reopened (Feb. 17, 1862) and both villages had their own post offices. Another reason why Beaver Dam was not an official p.o. was because there already existed a post office by that name in the state of New York. Beaver Dam in Albany County was established in 1827 but closed in 1833. Another Beaver Dams, but this time with the "s" existed in Schuyler County since 1845, continuing uninterrupted service to this day.

This cover came from a recent find of covers found in an attic. It was purchased from the Jagger family of Speonk and is now in the Rodriguez Collection.



*Flanders NY Feb 23*  
*Mr*  
*Cephus Jagger*  
*Westhampton*  
*Beaver Dam*  
*PO*

## BAKER'S COMMENTARY

The club's get-together on June 11th was not exactly a block buster for Long Island Postal Historians! Since Northport is a fairly centralized location for Long Islanders we had hopes of seeing more of you there. Would a Sunday afternoon have been a more advantageous time for other members to have joined us? If so, please let your officers know.

Falk Finkelberg of Coram was a welcomed addition to the usual attendees: President John Price, Secretary Art Fitzpatrick, Treasurer Carl Baker, Newsletter Editor Fred Rodriguez, Journal Associate Editor Dan. Knowles and historian Arthur Pollinger. A number of members had some of their "goodies" to show and what with a very short business meeting and some "help-yourself" refreshments the afternoon passed very pleasantly.

Falk Finkelberg's itinerary - he had driven by car from Coram to Port Jefferson Station to take the train to East Northport, where Art Pollinger and I were happy to meet him - reminds me of the part the Long Island Rail Road had played in that station's rather mixed-up history.

Originally the Syosset Branch of the L.I.R.R. had its terminal at Northport where its station was located a short distance north of 25A (Fort Salonga Road). It is important to know that a few miles east of the Greenlawn Station the tracks were lain in a northeasterly line to reach the Northport Station(1868). Only this year were those very tracks removed!

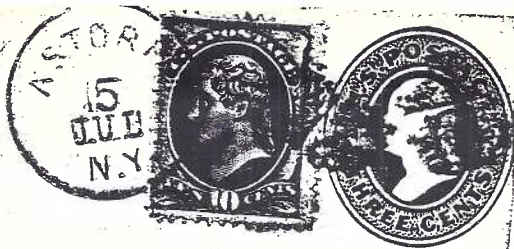
In 1870 began the extention of this branch to Port Jefferson by laying the tracks directly eastward from that point where they turned northeasterly to Northport. As far as the railroad was concerned the new station was east of that point and would be called East Northport. For a time Northport appeared to have two stations, but on Oct 17, 1899 the old Northport station was dropped as a passenger stop and the railroad chose to call its newer station "Northport". It is interesting to note that all timetables and the station house, itself, continue to carry the Northport designation to this day.

East Northport's first post office was not established until April 25, 1896 as "Larkfield". Undoubtedly the post office at that time was located in an establishment on the main highway, "Larkfield Road", and perhaps using Larkfield as part of its name. Whatever the reason, the name only added to the confusion already existing, and by Dec. 24, 1909 the name was officially changed to "East Northport". Geographically "South Northport" seemed more logical, but most felt it too absurd and selected the earlier railroad designation of East Northport instead. With the change in name the post office appeared to have moved as well. I have a cover bearing the "Larkfield" townmark and the date Feb 25, 1910, suggesting that the older post office continued to handle some mail for some time, whether official or not. In any case this 1910 letter would serve as a warning that the confusion surrounding East Northport was not about to end.



If not delivered within 10 days, to be returned to  
Post Office, N.Y.

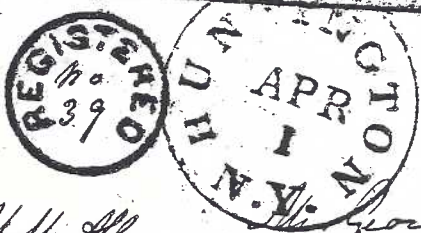
Reg No 1



Four Early L.I.  
Registered Covers.  
(Rodriguez Coll.)

Mr. Bennet C. Whitney  
Rahway  
New Jersey

Astoria, Queens Co.

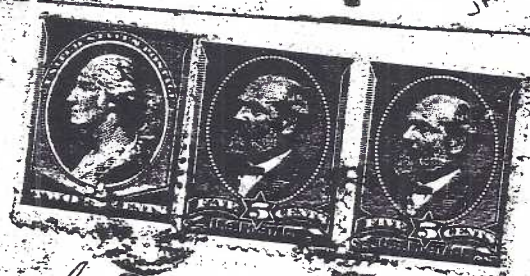


Huntington, Suffolk  
Co.

If Mr. Allen is  
not in town  
Please deliver to  
Deputy of Postwood  
for him to open

George Allen  
New Bern  
N. Carolina

From Georgiana C. Roman  
Middle Island  
Suff. Co. N.Y.



Middle Island,  
Suffolk Co.

No 29  
Mr. L. Doyle  
267 & 269 Grand Street  
New York

Mrs Ruth N. Smith  
West Neck Farm  
South Oyster Bay  
Long Island

Reg. No 24



Seaford, Nassau Co.

Long Island  
Saint James,  
Suffolk Co.



WANTED - Cover- Port Washington & New York RPO  
William J. Duncan, 26 Moody Ave., Freeport, N. Y. 11520

WANTED - The U.S. 1869 Pictorial issue used on cover with local Town  
cancels from anywhere in the country, especially from New  
Jersey and Arizona. Correspondence invited.  
Brad Arch, 144 Hamilton Ave., Clifton N. J. 07011

WANTED - Postal History covers from Woodbury and Syosset. Also wish  
to purchase or trade L. I. pictorial corner cards on covers  
thru early 1900s.  
Carl F Baker, 140 Lewis Road, Northport, N. Y. 11768

WANTED - L. I. postal history items from all four counties. I will buy  
or trade for interesting covers. Especially want Suffolk and  
Queens counties CPMs, L. I. Civil War patriotics, Postmasters'  
free franks, registered and special delivery covers and all  
covers from the P.O.s within Huntington Township. Also want  
old L. I. postcards, 1900 - 1920. Send on approval or Xerox.  
J. Fred Rodriguez, Box 49, Greenlawn, N. Y. 11740

0

```
*****
*                                     *
*      LONG ISLAND POSTAL HISTORY SOCIETY      *
*                                     *
*      Organized 1980      ||      Annual Dues $10.      *
*                                     *
*      President      John M. Price, Jr., M.D.      *
*      Vice Pres./Secretary      Arthur Fitzpatrick      *
*      Treasurer      Carl F. Baker      *
*      Journal Editor      Calvet M. Hahn      *
*      Associate Journal Editor      Daniel M. Knowles, MD      *
*                                     *
*      Please direct all Society      Please direct all Newsletter      *
*      correspondence to:      correspondence to:      *
*      The Secretary,      J. Fred Rodriguez      *
*      LIPHS      62 Shady Lane      *
*      P.O. Box 1178      Huntington, N.Y. 11743      *
*      Southold, N.Y. 11971      *
*                                     *
*****
```



LONG ISLAND POSTAL HISTORY SOCIETY - TERMS & CONDITIONS OF SALE :

Standard Auction descriptions and Terms & Conditions of Sale will apply. Bids will only be accepted on the Bid Sheet provided or a photocopy of it. Bid by Lot # only. Bid your maximum as lots will be sold to the highest bidder at one advance over the second high bidder. Type or Print your name and address and Sign your bidsheet (Signature on the Bid Sheet acknowledges acceptance of the Terms & Conditions of Sale). Postage and Insurance will be added to all Invoices, and all Invoices must be paid before the lots are shipped. All Invoices are Due & Payable IMMEDIATELY upon receipt and payment should be received by the Auction Manager within one week of receipt of Invoice by Bidders. Photocopies of any lots are available @ 10¢ per item plus an SASE from the Auction Manager.

Abbreviations used: WF = Washington-Franklin Head designs of 1907-1921. The County of location of the Post Office is indicated by a single letter at the end of the Lot Description: K = Kings, Q = Queens, N = Nassau, S = Suffolk. An Asterisk (\*) indicates that the lot is illustrated in this list. Each Lot has been apprenixed with an Estimated Retail Value (Actual Net) to be used only as a guideline as lots may sell higher or lower. Only a very few lots have Protective Reserves placed on them by the Owners, so feel free to bid whatever you think the lot is worth to you. Also, a very few lots are noted with Minimum Bids instead of estimates, Bids below these stated values will not be accepted.

Bidding Intervals:

by 25¢ up to \$10  
by 50¢ up to \$20  
by \$1 up to \$50  
by \$2 up to \$100  
y \$5 on up

Send all Bids  
& Auction Correspondence to:

Brad Arch  
144 Hamilton Ave  
Clifton, New Jersey 07011

----- C U T H E R E -----

Auction BID SHEET August 1, 1983  
Long Island Postal History Society

: : :  
: : :  
: : :

Please purchase for me the Lots listed below, the prices listed being my limit on each Lot. My Signature on this Bid Sheet acknowledges my acceptance of the Terms & Conditions of Sale.

Mail this Bid Sheet to:

Signature: \_\_\_\_\_

Brad Arch  
144 Hamilton Ave  
Clifton NJ 07011

(Type or Print)

Name : \_\_\_\_\_

Address : \_\_\_\_\_

LOT : BID	LOT : BID	LOT : BID	LOT : BID	LOT : BID
:	:	:	:	:
:	:	:	:	:
:	:	:	:	:
:	:	:	:	:
:	:	:	:	:
:	:	:	:	:
:	:	:	:	:

CONTINUE ON REVERSE IF MORE SPACE IS NEEDED .....



1  
JUL 18  
BROOKLYN N.Y.

5  
PASSAGE  
3 CENTS  
E.S. KAPLAN

2  
JUL 2  
BROOKLYN N.Y.

4  
JUL 5 1906  
BROOKLYN N.Y.

5  
JUL 5 1906  
BROOKLYN N.Y.

17  
BRIDGEHAMPTON  
JUL 24  
N.Y.

18  
JUL 24  
N.Y.

10  
ISSUED BY  
New York & Sea Beach  
RAILWAY CO.  
Good for ONE PASSAGE from  
Brighton Beach to Sea Beach  
Palace on  
WM. CAPPEL'S STAGES  
for Coney Island Elevated R'y.  
2950  
Chick Williams  
Managing Director

11  
ISSUED BY  
New York & Sea Beach  
RAILWAY CO.  
Good for ONE PASSAGE from  
CONEY ISLAND to  
Whitehall St., New York  
2950  
Chick Williams  
Managing Director

14  
BAY RIDGE  
SEP 30 1888  
N.Y.

15  
SEP 30 1888  
N.Y.

16  
BAY RIDGE  
SEP 30 1888  
N.Y.

21  
BROOKLYN  
JUL 18  
N.Y.

22  
PAID  
3  
M. C. Cephan  
Brooklyn N.Y.

23  
BROOKLYN  
JUL 18  
N.Y.

25  
COLLEGE POINT  
JAN 26  
N.Y.

26  
BROOKLYN  
SEP 22  
N.Y.

24  
COLLEGE POINT  
MAR 22  
N.Y.

25  
PAID  
5  
Paid 25

36  
JUL 18  
N.Y.

41  
IF NOT DELIVERED IN 10 DAYS,  
RETURN TO L. L. Kenney  
BOX 42, Fort Hamilton, N.Y.

42  
JUL 18 1882  
N.Y.

43  
JUL 18 1882  
N.Y.

44  
FLORAL PARK  
DEC 5 1887  
NEW YORK

45  
DEC 5 1887  
NEW YORK

36  
JUL 18  
N.Y.

33  
Holland N.Y.  
Aug 30<sup>th</sup>

34  
JUL 18  
N.Y.

34  
JUL 18  
N.Y.

31  
409  
Park & Telford  
20<sup>th</sup> Street & Broadway  
New York City  
EAST HAMPTON N.Y.  
MAY 3 7 AM 1904  
REGISTERED

35  
free  
D. Cooley Esq  
Postmaster  
Washington  
Michigan  
mail



Long Island Postal History Society - 2nd Auction - Closing Date: Aug. 1, 1983

RPOS - RAILROADS & COLLATERAL :

- 1.\* LONG ISLAND RR c1850 barley readable red CDS & red '5' on fresh small stampless cover to Southold LI.....Minimum Bid.\$ 58
- 2.\* LONG ISLAND RR 1850s avg #26 tied mostly readable CDS to mostly fresh cover with some back flap tears, to Speonk LI....Min Bid.\$ 20
3. PORT WASHINGTON & LIC/RPO 1901 avg 2¢ Bureau issue tied mostly clear duplex to sound cover. To JEROME, ARIZONA with Territorial backstamp of arrival.....\$ 10+
- 4.\* BROOKLYN NY CIRCUIT/RPO 1906 VF 1¢ 1902 issue tied NIAGARA FALLS NY Flag MC, bold CDS on sound PPC as transit/receiving mark....\$ 5
5. GREENPORT & NY/RPO 1907 avg 1¢ 1902 issue tied mostly readable duplex to sound PPC.....\$ 5
- 6.\* NEW YORK & LONG ISLAND CITY 34th STREET FERRY c1900 (cardboard ticket) "Pass One - 3 Cents", worn & wrinkled.....\$ 3
7. LONG ISLAND RAILROAD c1900 New York & Bay Ridge or L I City (cardboard Ticket) "One Passage over James Slip or 34th Street Ferry" sound, light crease.....\$ 5
8. LONG ISLAND RAILROAD c1900 stub #1 Bay Ridge to Manhattan Beach (cardboard ticket) roughly torn at top touching design, otherwise sound and clean.....\$ 4
9. LONG ISLAND RAILROAD c1900 stub #2 Manhattan Beach to Bay Ridge (cardboard ticket) sound and clean.....\$ 5
- 10.\* NEW YORK & SEA BEACH RAILWAY CO. c1900 (unsevered pair of cardboard tickets) stub #4 Brighton Beach to Sea Beach Palace on Wm. Cappel's Stages for the Coney Island Elevated R'wy.; stub #5 Coney Island to Whitehall St. NY. fresh and clean.....\$ 10+

REGULAR TOWN LISTING (Alphabeticly):

11. AMITYVILLE 1860s fine #65 cancelled cork, mostly clear but 25% off cover CDS on sound cover to Southold LI.....S.\$ 5
12. BABYLON 1860s avg #65 tied socked on the nose mostly clear DC CDS on fresh yellow cover.....S.\$ 5
13. BABYLON 1870s avg 1¢ BN tied mostly readable blue CDS to sound yellow cover to West Islip. ( ? rate ).....S.\$ 4++
- 14.\* BAY RIDGE 1888 fine 2¢ green BN tied bold black CDS on fresh mourning cover.....DPO.K.\$ 25+
15. (BAYSIDE) 1850s avg #11 tied mostly readable NEW-YORK CDS on sound envelope. Enclosed letter headed "Bayside"(PO Estab. 1867)Q\$ 5+
- 16.\* BRIDGEHAMPTON 1850s avg #26 tied mostly bold CDS to fresh cover with small tear at top, ¼".....S.\$ 7++
- 17.\* BRIDGEHAMPTON 1860s fine #65 tied black grid in circle to sound white cover with Patriotic Edgeing on Back ONLY & colorless embossed Eagle & Motto; bold black CDS.....S.\$ 15+
18. BRIDGEHAMPTON 1860s avg #65 tied waffled grid, clear black CDS on fresh cream colored cover.....S.\$ 5+
19. BRIDGEHAMPTON 1891 avg 2¢ small BN cancelled cork, mostly bold CDS on sound cover.....S.\$ 2+



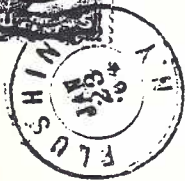
20. BROOKLYN 1843 partly readable red CDS on fresh SFL, ms rated '25' to Maine. Letter written by Ship Captain to owners.....K.\$ 15
- 21.\* BROOKLYN 1847 bold red CDS & '5' on fresh white SFL datelined Flatbush.....Minimum Bid.K.\$ 8
- 22.\* BROOKLYN N-Y 1850s bold black CDS on mostly sound kraft cover, with bold red 'PAID over 3' handstamp.....K.\$ 5+
- 23.\* BROOKLYN 1850s avg #11 tied bold CDS on sound cover.....K.\$ 10+
- 24.\* COLLEGE POINT 1840 bold GREEN CDS & 'PAID' handstamp on mostly sound double weight SFL with some seperations at folds, also manuscript 'Paid 25' rate.....DPO.Q.\$ 15++
- 25.\* COLLEGE POINT 1842 bold red CDS on fresh white SFL,MS'6'rate..Q.\$ 10+
26. CORAM 1860s avg #65 tied quartered cork, mostly bold CDS on extensively repaired yellow cover with two large tears across face, 1" each.....S.\$ 5
27. DOUGLASTON 1909 VF 2¢1903 Shield with S/E tied mostly clear 4Bar handstamp on fresh cover.....DPO.Q.\$ 10
28. DOUGLASTON 1910 avg 1¢WF tied bold 4Bar handstamp on fresh PPC.Q\$ 8
29. EAST HAMPTON 1860s avg #65 with S/E tied target, mostly readable but blurry CDS on fresh cover.....S.\$ 5+
30. EAST HAMPTON 1860s avg #65 cancelled target, tied with small stain, clear CDS on slightly shortened cover without backflap and with  $\frac{1}{4}$ " nick at right end.....S.\$ 5
- 31.\* EAST HAMPTON 1904 Fine 10¢1902 issue tied cork, mostly bold black CDS & Bold Magenta DC CDS 'REGISTERED' on fresh cover..S.\$ 10++
32. FISHERS ISLAND 1898 F 2¢Bureau issue tied cork, mostly bold CDS on sound cover with local hotel CC, red & blue Falg on back flap (Spanish-American War PATRIOTIC).....S.\$ 3++
- 33.\* FLATLANDS 1860s avg #65 cancelled manuscript squiggles, bold manuscript townmark on mostly sound cover with light edge foxing.....Minimum Bid.DPO.K.\$ 15
- 34.\* FLORAL PARK 1887 F 2¢ brown BN tied bold black CDS & Cork Killer to sound cover with few small edge tears. 1st Year of Oper..QN.\$ 15
- 35.\* FLUSHING 1841 uneven but mostly clear red CDS on sound SFL with light stains. Manuscript "FREE" rated in blue.....Q.\$ 10
- 36.\* FLUSHING 1850s avg #11 tied mostly bold CDS on sound cover with some water stains.....Q.\$ 3++
- 37.\* FLUSHING 1860s avg #65 tied Bold DC CDS & Target to sound cover with very light toning.....Q.\$ 5+
38. FLUSHING 1860s VF #65 tied target, bold DC CDS on sound orange cover slightly worn at tirght end.....Q.\$ 5
39. FLUSHING 1860s avg #65 tied clear black DC CDS & Target to sound cover with edge toning.....Q.\$ 5
40. FLUSHING 1934 F 3¢ Century Of Progress Comm tied mostly bold MC to handtsmp cacheted fresh PO Dedication cover.....Q.\$ 5
- 41.\* FORT HAMILTON 1882 avg 3¢BN tied target, mostly clear black CDS on sound cover with printed local CC.....DPO.K.\$ 20+
42. FREEPORT 1933 F 2¢WashBicent. tied bold MC on fresh printed cacheted cover for last day at old location.....N.\$ 5

43. GREENPORT 1870s avg 3¢BN tied quartered cork, clear black CDS  
on sound lightly toned cover w/contents.....S.\$ 4+
- 44.\* HAUPPAUGE 1923 VF 1¢WF and 1923 Xmas Seal tied mostly bold  
black 4Bar handstamp to fresh PPC.....DPO.S.\$ 10++
- 45.\* HEMP. 1849 bold manuscript townmark on fresh blue SFL, manuscript  
'Paid 5' rate to Smith Town LI.....Q.\$ 12++
- 46.\* HEMPSTEAD c1850 bold black CDS & 'PAID over 3' in circle handstamp  
on very edge worn and ragged salmon colored stampless cover..Q.\$ 12
- 47.\* HEMPSTEAD 1855 bold black CDS on sound stampless cover with  
lightly worn and wrinkled edges, handstamped 'PAID over 3' in  
circle. to Cold Spring LI w/contents.....QN.\$ 8+
48. HEMPSTEAD 1860s avg #65 tied clear CDS to worn and frayed and  
stained cover.....N.\$ 2
- 49.\* HEMPSTEAD/QUEENS CO. 1881 bold DOC CDS CPM & STAR Killer on  
fresh blue 3¢ War Dept Official entire.....QN.\$ 30+
50. HOLTSVILLE 1870s avg 3¢BN cancelled target, mostly bold CDS  
on sound cover.....S.\$ 3
51. HUNTINGTON 1850s avg #11 tied mostly clear black CDS on sound  
buff cover with half of backflap missing.....S.\$ 10++
52. HUNTINGTON 1860s avg #65 cancelled grid, mostly bold black CDS  
on fresh cover without backflap & small  $\frac{1}{4}$ " tear at top.....S.\$ 12+
53. HUNTINGTON\*LI\* 1882 VF 3¢BN tied DC CDS & Maltese Cross Killer  
to lightly worn cover with edge tears, creases & foxing.....S.\$ 7 $\frac{1}{2}$
54. HUNTINGTON 1889 mostly clear black CDS & cork on fresh 2¢ Entire.  
Purple NORTHPORT receiving mark on reverse.....S.\$ 4
55. HUNTINGTON 1900s avg 1¢1902 issue #300 tied mostly bold duplex  
to fresh cover. Local Drop Letter Rate.....S.\$ 2++
56. HUNTINGTON 1905 damaged 2¢1903 Shield issue tied bold duplex  
to sound cover.....S.\$ 2
57. ISLIP 1888 avg 2¢ green BN tied clear FLYING EAGLE Fancy Cancel  
on sound cover without backflap, mostly clear CDS. This is the  
same cover that was offered last year and illustrated as Lot#68,  
and failed to reach its reserve, which has now been lowered.  
.....MINIMUM BID.S.\$ 50
- 58.\* JAMAICA 1848 fresh 2"x6 $\frac{1}{2}$ " receipt for postage payment printed  
form signed by the postmaster.....Q.\$ 20
- 59.\* JAMAICA 1848 mostly clear red CDS & '10' ratestamp on sound  
blue SFL with no file folds.....Q.\$ 18
- 60.\* JERICHO 1815 bold black manuscript on dirty SFL with badly worn  
edges. Manuscript 'Paid 12' rate: War Rate 8+4¢ to Setauket.QN.\$ 20
61. JERICHO 1870s avg 3¢BN cancelled mostly clear Negative Star, bold  
but deteriorated CDS with manuscript date on cover with 1"  
triangle cut from top left corner.....N.\$ 5
- 62.\* LONG ISLAND CITY 1866 avg #65 tied circle of 'V's Killer, mostly  
bold CDS on mostly sound orange cover to Westhampton LI.....  
.....Minimum Bid.Q.\$ 10
63. MANHANSET HOUSE 1901 avg 2¢Bureau issue tied barely readable CDS  
and cork to raggy illustrated advertizing cover for Manhanset  
House. Roughly shortened at left into illustration.....DPO.S.\$ 3





37



44

CORRESPONDENCE

POST OFFICE



49

Hemp. N.Y.  
Feb 1

45



46

58

Jamaica 1848

To the Post Office,

Mr. Isaac Hillis-

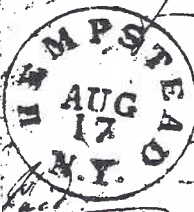
Dr.

For Postage,

Received Payment,

*M. J. Hillis*

60

*for the September 12**Woodbury  
in Cold Spring  
Long Island*

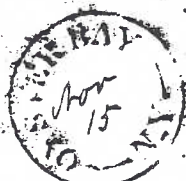
47

*Isaac Brewster  
with friend  
Returnet  
Strong brook Suffolk Co. N.Y.*

62

*West Hampton  
Long Island*

59



70

*Wachusett  
June 21*

65

*Child 5*(Post Office Address)  
Prospect Grove,  
Suffolk Co. N.Y.

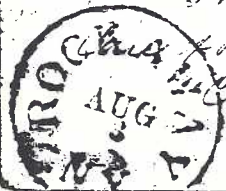
76

*Samuel L.**Shelter Island  
N.Y. July 24*

88

*Brooklyn**Ridge Ny  
April 21*

77



82

*Henry  
Robertson  
Charles  
Pell**Shelter Island  
N.Y. May 21*

89

*Matthews - Rock  
Care of the  
Lancaster  
Parker County  
Mass.*



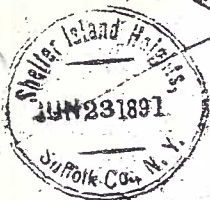
64. MANHANSET MANOR 1907 (2 PPCs) avg 1¢1902 issue #300 tied duplex to fresh PPCs. 1 bold strike, 1 partial.....DPO.S.\$ 3+
- 65.\* MORICHES 1848 bold manuscript townmark on sound slightly dirty SFL, manuscript 'Paid 5' rate.....S.\$ 5
66. NORTHPORT 1870s F 3¢BN cancelled target, mostly bold black CDS on fresh orange cover.....S.\$ 4
67. OCEANSIDE 1930 avg 2¢1922 issue tied clear duplex on sound cover with light staining.....DPO.N.\$ 8
68. OLD WESTBURY 1875 F 2¢green BN cancelled manuscript 'X', mostly readable blue double oval datestamp with year date 12 years before stamp was issued. Stamp obviously does not belong on this cover. Sound cover with 1" tear at top center.....DPO.N.\$ 4
69. ORIENT 1873 VF 3¢BN cancelled cork, mostly readable CDS on fresh cover with colorless embossed monogram.....S.\$ 4
- 70.\* OYSTER BAY 1855 avg #11 with crease, manuscript cancelled '#' (double X), mostly clear red CDS with Fleurons to sound brown cover with light edge toning.....N.\$ 10++
71. OYSTER BAY 1860s F #65 tied grid, clear black CDS on fresh miniature white cover with red pattern.....N.\$ 8++
72. OYSTER BAY 1860s avg #65 cancelled target, mostly clear black CDS on fresh buff cover.....N.\$ 5+
73. OYSTER BAY 1953 VF 3¢ Sagamore Hill tied clear MC First Day Of Issue on fresh commercially used cover to Springfield LI.....S.\$ 1+
74. PATCHOUGE 1870s avg 3¢BN with some stains around perfs tied black target, DC CDS on sound small cover with few small edge tears.....S.\$ 5+
75. POST JEFFERSON 1870s avg 3¢BN cancelled cork, mostly clear black CDS on mostly sound cover with some rounded corners.....S.\$ 4
- 76.\* PROSPECT GROVE/SUFFOLK CO. 1886 VF 2¢ brown BN tied grid, mostly bold but light DC CDS CPM on fresh cover with local CC...DPO.S.\$ 12++
- 77.\* RIDGE c1850 bold manuscript townmark on sound buff stampless cover without contents. Manuscript '5' rate.....S.\$ 12+
78. TIVERHEAD 1860s F #65 tied cut cork, barely readable CDS on mostly sound cover with much pencil doodling, to Deer Park LI.S\$ 2
79. RIVERHEAD 1860s damaged #94 tied cut cork killer, clear CDS on sound cover with small edge tears to Deer Park LI.....S.\$ 3
80. RIVERHEAD 1870s mostly readable CDS & cork on mostly sound 3¢ entire U163 with ½" tear at top.....S.\$ 2
81. RIVERHEAD 1870s avg 3¢BN tied barely readable CDS and cork to sound cover with light foxing.....S.\$ 1
- 82.\* ROCKAWAY 1860s VF #65 cancelled bold Negative Star of David, mostly bold CDS on small worn, wrinkled and lightly stained cover.....Minimum Bid.Q.\$ 12
83. SAG HAR 1831-1845 (5 SFLs) weak to clear strikes of red, blue or black CDSs on sound SFLs, 1 w/scotch tape. All manuscript rated: 4 @ 18 3/4¢; 1 @ 25¢.....S.\$ 25
84. SAG HARBOR 1853 partly readable black CDS and handstamped 'PAID' & '3' on fresh miniature stampless cover without contents. Small ¼" surface tear does not detract.....S.\$ 10

85. SAINT JAMES 1920 avg 2¢WF tied barely readable duplex to fresh cover with Magenta Pointing Hand and Officially Sealed label (OX), local CC.....S.\$ 2+
86. SAINT JAMES 1935 avg 3¢1933 issue tied mostly readable duplex to fresh cover with local CC, Magenta Pointing Hand & 'Cannot Be Found' handstamp.....S.\$ 2
87. SEAFORD 1886 avg 2¢ brown BN cancelled target, bold but light CDS on fresh cover.....QN.\$ 5
- 88.\* SHELTER ISLAND c1850 bold manuscript townmark on worn stampless cover to South Oyster Bay LI. Manuscript '5' rate. Most of backflap missing, no contents.....S.\$ 5+
- 89.\* SHELTER ISLAND 1850s F+ #11 cancelled manuscript squiggles. Bold manuscript townmark on fresh clean cover.....S.\$ 20+
90. SHELTER ISLAND 1856 bold manuscript townmark on mostly sound 3¢ entire U10 w/contents.....S.\$ 4
91. SHELTER ISLAND 1850s mostly clear black balloon CDS on somewhat worn and shortened at left 3¢ entire U10 aith small tear at top, without contents.....S.\$ 5
92. SHELTER ISLAND 1850-60s (5 covers) mostly readable and/or bold but struck partly off cover CDSs on sound 3¢ entires. 2 @ U10, 1 @ U26, 2 @ U27.....S.\$ 15
93. SHELTER ISLAND 1850s avg #26 tied cork, mostly bold balloon CDS on fresh cover.....S.\$ 5+
94. SHELTER ISLAND 1859 avg #26 tied uneven but mostly readable CDS to orange cover with lightly wrinkled edges.....S.\$ 5
95. SHELTER ISLAND 1860s avg #65 tied cork killer, partly readable CDS on sound appearing orange cover with large tear across back to Southold.....S.\$ 5
96. SHELTER ISLAND 1869 avg #65 tied target, bold black CDS to mostly sound cover, roughly shortened at left just clar of CDS.....S.\$ 5
97. SHELTER ISLAND 1869 avg #114 cancelled cork, mostly readable black CDS on fresh small cover.....S.\$ 5
98. SHELTER ISLAND 1879 F 3¢BN tied target, mostly readable black CDS on fresh small white cover.....S.\$ 4
- 99.\* SHELTER ISLAND HEIGHTS/SUFFOLK CO. 1891 clear purple DOC CPM as backstamp on 2¢ entire mailed from NYC. Backflap tear clear of marking, and visually detracts.....S.\$ 12+
100. SHELTER ISLAND HEIGHTS 1898 avg 2¢Bureau issue tied target, mostly clear CDS on fresh cover.....S.\$ 3
101. SHELTER ISLAND HEIGHTS 1922 avg 1¢WF tied bold duplex to fresh PPC.....S.\$ 1+
102. SMITH TOWN BRANCH 1870s F 3¢BN tied grid, mostly bold black CDS on fresh orange cover.....DPO.S.\$ 5+
103. SOUTHAMPTON 1886 avg 2¢ brown BN tied mostly readable CDS & segmented cork to sound cover with edge toning. Purple 'Received Greenport' CDS on reveese.....S.\$ 8
104. SOUTHOLD 1860s damaged #65 cancelled grid, bold black CDS on fresh cover slightly shortened at left.....S.\$ 3
- 105.\* SOUTHOLD 1873 mostly bold year dated CDS on fresh 3¢ U84 entire\$ 5+



99

105



*Samuel L. Garrison*

106

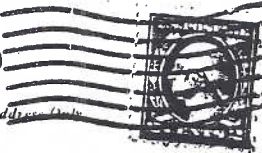


108

*PAID 5*

*Samuel L. Garrison Esq*

111



This Space for Communication

For Address Only

*Samuel L. Garrison Esq*

*Long Island City*

*Best regards  
Emma*

*Mr. George Emis  
217 W 33rd  
New York  
City*

113



*Miss August A. Davis  
Long Island*



x119



*Mrs. E. W. L. Seymour  
Hingham Mass.*

114



*Miss David L. L.*

*Plainville  
Conn. Aug 60*

112



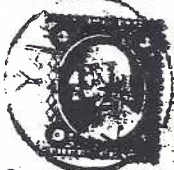
**"THE CHRISTIAN HERALD,"**

**83258 Office, Bible House,**

**New York City.**

*Reg # 58*

123



*William L. S. Russell Esq  
New York.*



- 106.\* SPRINGFIELD STORE 1890 avg 2¢ green BN cancelled target, bold but partial CDS on slightly dirty sound cover with rough opening at right end. Purple Northport backstamp.....DPO.Q.\$ 20
107. STONY BROOK 1879 avg 3¢BN cancelled cork, mostly readable CDS on sound cover with light toning.....S.\$ 4
- 108.\* SUFFOLK C.H. 1849 mostly clear red CDS & handstamped 'PAID' and manuscript '5' rate on fresh business size blue SFL, datelined Riverhead.....DPO.S.\$ 10+
109. SUFFOLK C.H. c1850 mostly readable but light red CDS on sound stampless cover without contents, manuscript '5' rate...DPO.S.\$ 10
110. SYOSSET 1884 avg 2¢ brown BN cancelled target, mostly bold CDS on sound appearing cover with large tears on back and a small tear on front edge.....N.\$ 5
- 111.\* UPTON BRANCH-BROOKLYN 1917 F 2¢WF tied bold MC to cound PPC, view of the entire camp. 2¢War Rate, used 1st month.....DPO.S.\$ 5+
- 112.\* VALLEY STREAM 1896 F 10¢Bureau issue #226 tied multiple tarhets, bold CDS on sound Registered cover with small nick at right.QN\$ 4++
- 113.\* WADING RIVER 1860s avg #65 barely tied by target, mostly bold black CDS on small cover with light staining and a few small edge tears.....S.\$ 8
- 114.\* WESTBURY 1884 avg 2¢ brown BN tied bold purple DC CDS to fresh cover.....QN.\$ 15
115. WHITESTONE 1860s avg #65 tied mostly bold black CDS to fresh buff cover.....DPO.Q.\$ 15+
116. WHITESTONE 1860s F #65 tied mostly bold CDS to fresh cream colored cover.....DPO.Q.\$ 15
117. WHITESTONE 1860s two single avg #65's cancelled manuscript, mostly clear black CDS on fresh buff cover.....DPO.Q.\$ 15+
118. WHITESTONE 1860s (3 buff covers) F or better #65's tied various grids or CDS; 1 clear CDS, 2 overinked bold CDS on fresh buff covers.....DPO.Q.\$ 30+
- 119.\* WHITESTONE 1860s (5 white covers) avg #65's tied various grids, corks or CDS to 3 fresh and 2 sound white covers. CDS's range from mostly readable to overinked bold.....DPO.Q.\$ 50
120. WHITESTONE 1906 mostly bold duplex on fair 1¢ PC UX18 with bad facial scrapes. Printed back for Metal Mfr.....DPO.Q.\$ 5+
121. WILLIAMSBURGH 1850s avg #26 tied target, mostly clear CDS on sound cover with blue and embossed CC on back flap that fold up, of 'Farmers & Merchants Bank of LI'.....DPO.K.\$ 20+
122. WILLIAMSBURGH 1860s avg #65 tied multiple corks, mostly readable DC CDS on sound cover shortened about 1" at right into address.....DPO.K.\$ 8
- 123.\* YAPHANK 1850s F #26 tied mostly bold CDS socked on the nose on fresh white cover.....S.\$ 10++
124. (Queens County) 5 PPCs c 1900-1920; 2 unused, 3 used of which 1 with Long Beach duplex.....\$ 5
125. (Nassau County) 2 PPCs 1905 SEACLIFF tied duplex, other unused multicolor East Williston.....\$ 2
126. (Suffolk County) 3 PPCs MT SIANI-PO view; MILLER PLACE-PO view; SAYVILLE -RR Sta view. All with 1¢1902 #300 with barely readable duplex cancels.....\$ 6

127. (Suffolk County) 4 PPCs 1907-1921 All Used, all watery scenes.  
Postmarked: SMITHTOWN Doance Cancel; BABYLON machine cancel;  
EAST QUOGUE & MILLER PLACE duplexes.....\$ 5
28. (Suffolk County) 9 PPCs c1900-1920 All unused, mostly watery  
scences with boats. View of: Mattituck, Huntington Harbor,  
East Quogue, East Hampton.....\$ 5

- The End -

