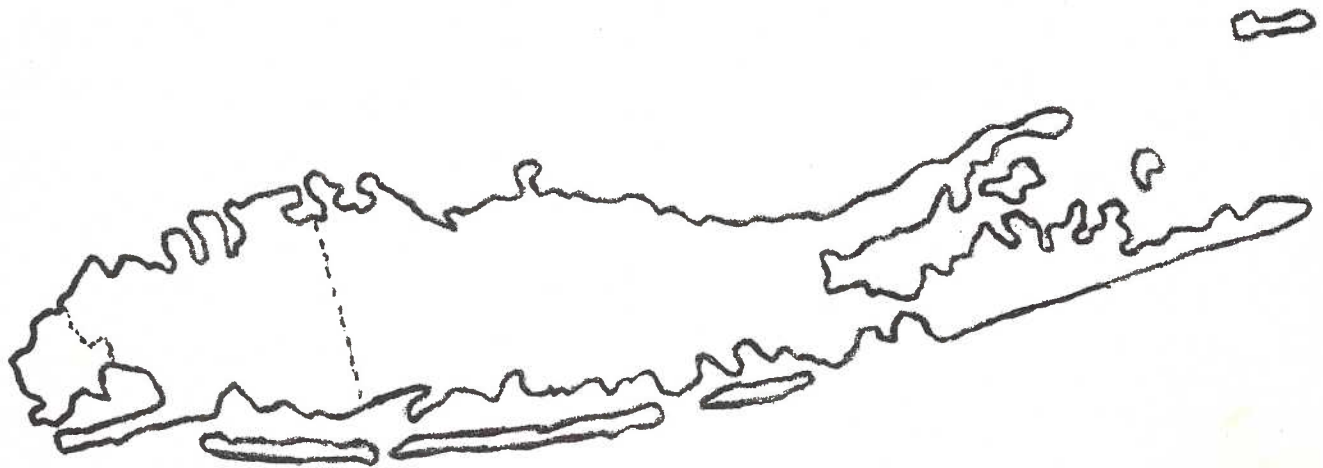


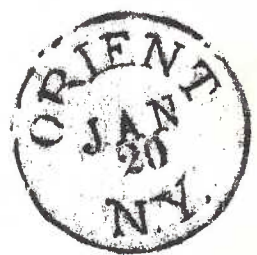
LONG ISLAND



POSTAL HISTORY SOCIETY



Winter 1983
Whole # 5



FIRST AND LAST DAYS--THE WORLD'S FAIR OF 1939

by John Riccardelli

The World's Fair of 1939 began as an idea in 1935 when a Board of Directors was organized to plan a World's Fair for New York City. The success of Chicago's 'Century of Progress' exposition of 1933-4 tempted New York to surpass it.

The 1939 Fair was to be a direct lineal descendent of the London Exposition of 1851--the first of the big modern international expositions or fairs. While New York had had an International Exposition in 1853, it was not on the same scale of the big American fair--the Centennial Exposition held in Philadelphia in 1876. Interestingly enough, the 1939 Fair was to be the first in America to claim to be a 'World's Fair', although the 1884 Industrial and Cotton Centennial held at New Orleans in 1884 had used the word 'World' in its title. All the rest were expositions and two or more stamps were issued for all but the 1920 Susquehannock Centennial. Thus we had sets of stamps issued for the 1893 Columbian, the 1898 Omaha, the 1901 Pan American, the 1904 Louisiana Purchase, the 1907 Jamestown, the 1915 Pan Pacific and the 1933 Century of Progress. The Susquehannock Centennial had an envelope and a stamp.



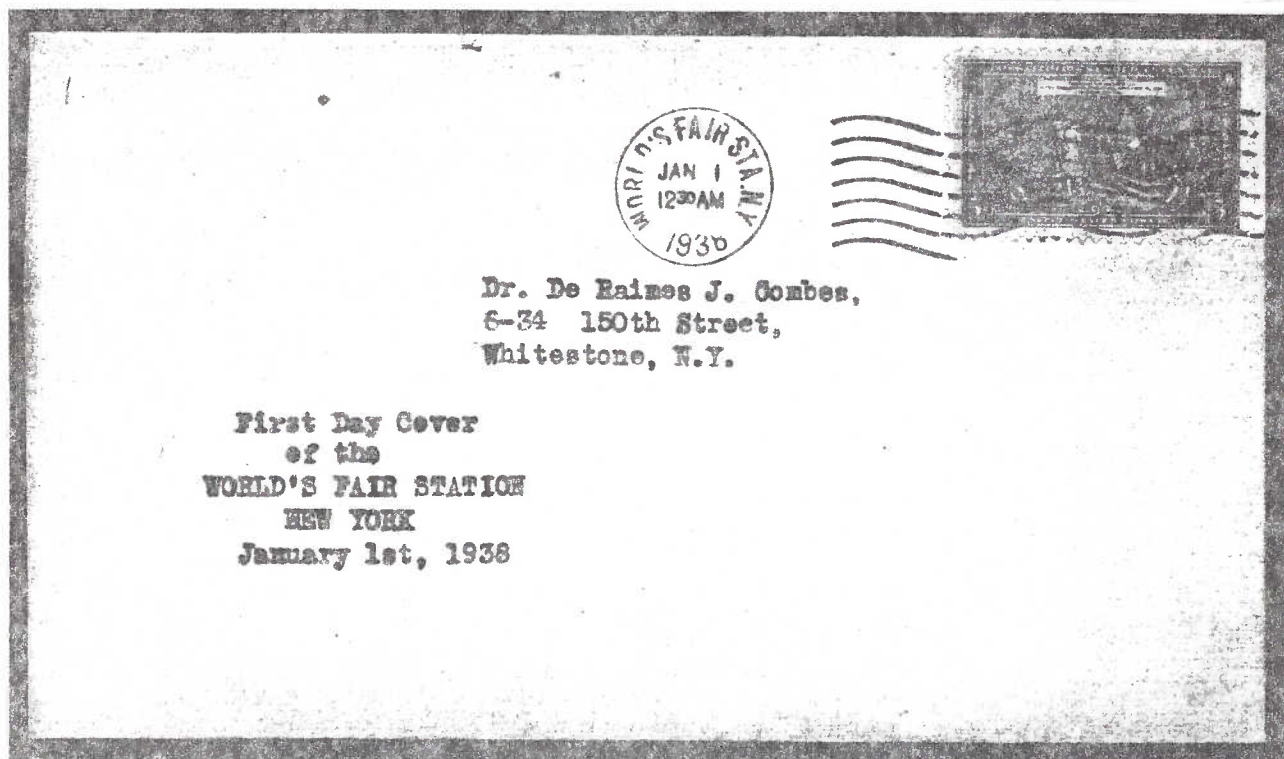
Post Office at the 1939 World's Fair

LONG ISLAND POSTAL HISTORY SOCIETY JOURNAL
Winter 1983 Whole #5

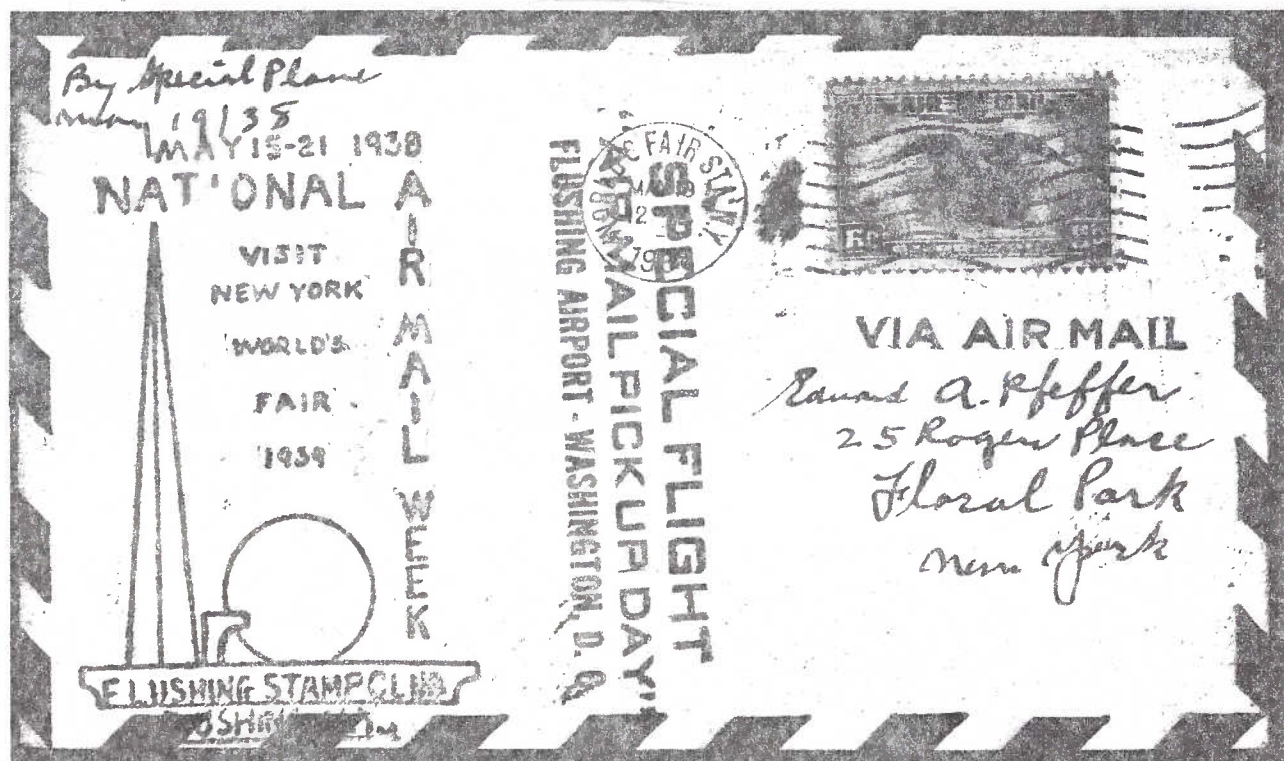
President.....Dr. John M. Price Jr.
Treasurer.....Carl F. Baker
Secretary.....Arthur Fitzpatrick
Journal Editor.....Calvet M. Hahn
Associate Editor.....Dr. Daniel Knowles
Contact: LIPHS Secretary Box 1178
Southold, N.Y. 11971

2.

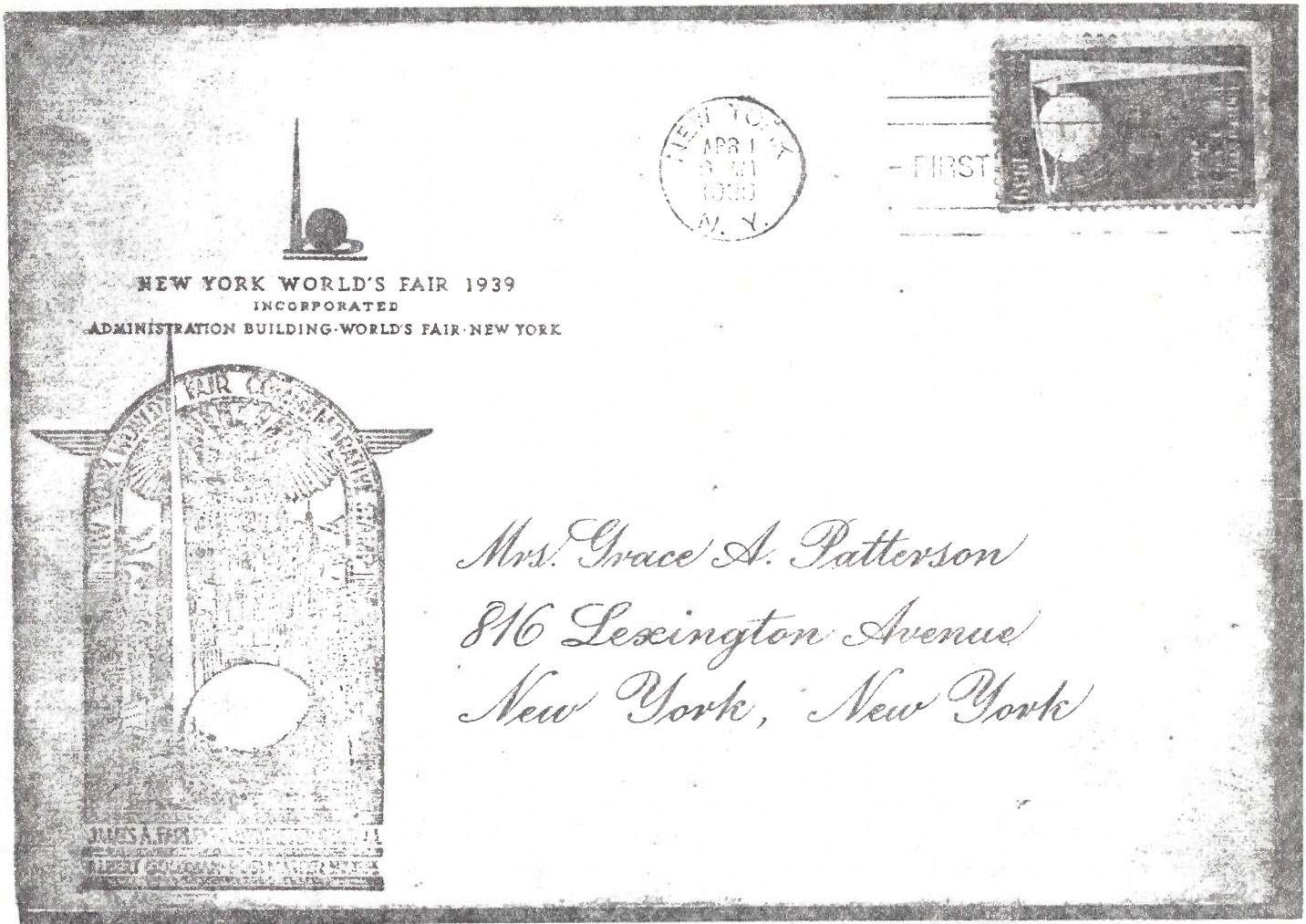
While the World's Fair Corporation had its first headquarters in the Empire State building, it was located on the fairgrounds at Flushing Meadow by August 1937.



The World's Fair postoffice, which was located next to the Administration building began operations on January 1, 1938 — fifteen months before the World's Fair stamp was issued. That, in turn, was almost a month before the Fair opened to the public.



The first use of the new postoffice for a social event took place during Air Mail Week when the Flushing Stamp Club sponsored a cachet on May 19, 1938.



World's Fair Station New York.

24934 OFFICE NUMBER

23714 SERIAL NUMBER

Coupon for Paying Office
HOLDER MUST NOT DETACH

PAY TO: WRITE WORDS FOR DOLLARS DOLLARS 01 CENTS
FIGURES FOR CENTS

George J. Hill
REMITTER: Kurt P. Schwager
World's Fair Station, New York

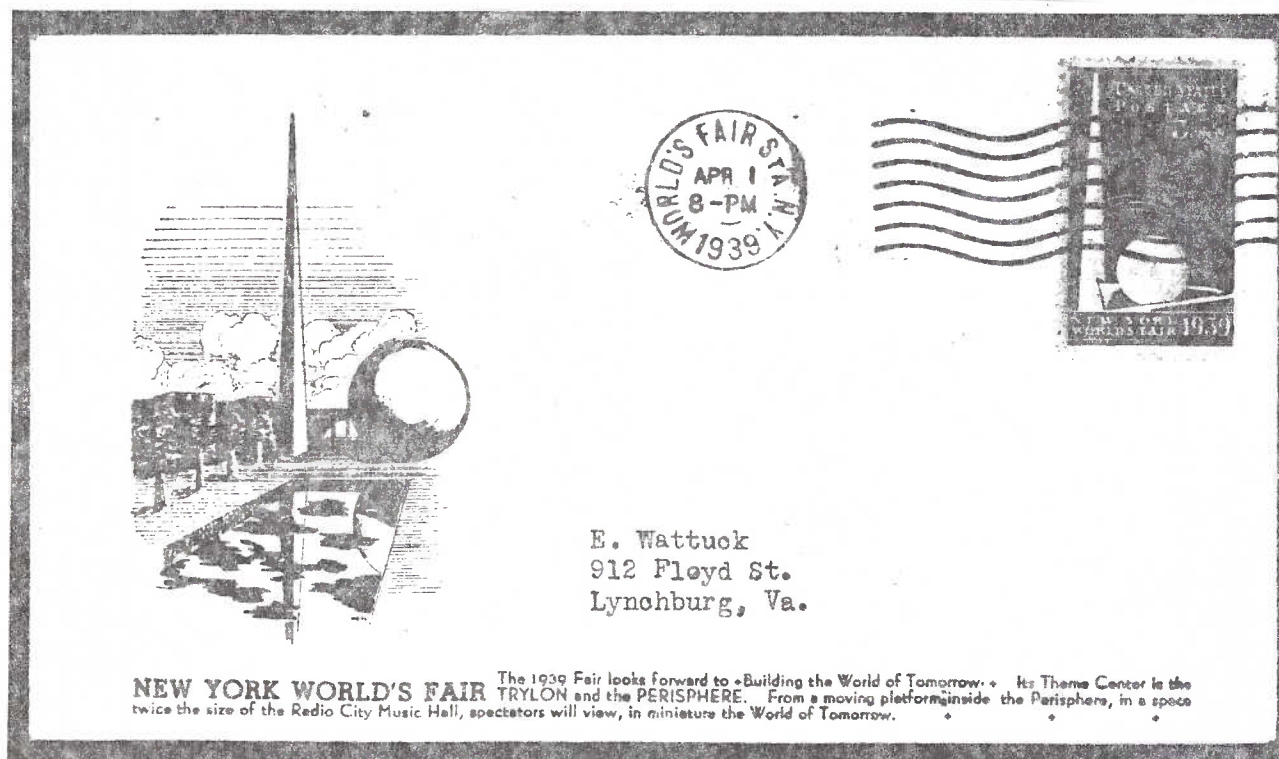
C.O.D. PARCEL NUMBER

FOR REMITTER
TO DETACH AND HOLD
MUST BE PRESENTED AT
OFFICE OF ISSUE WHEN EX-
CHANGE IS MADE FOR OTHER
ORDER

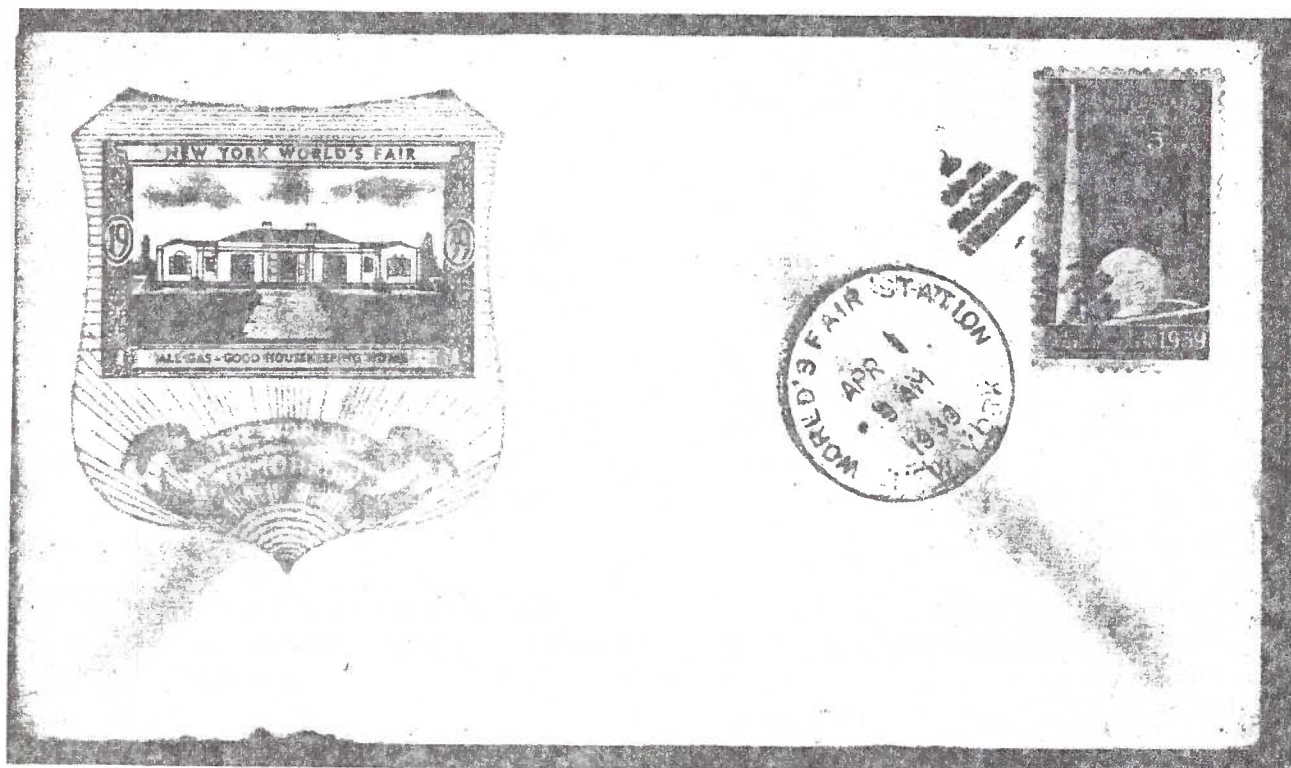
OCT 25 1940
U.S. S.

OCT 25 1940
U.S. S.

(Top) Official envelope of the fair used for a first day cover of the new World's Fair stamp April 1, 1939. It has a Goldman rubber stamp cachet.
(Bottom) World's Fair money order issued at the World's Fair station. This example was a typical souvenir of the fair.



(Top) Typical World's Fair Station machine cancel on first day cover of the World's Fair stamp. Cachet by Hetl.
(Bottom) Unaddressed first day cover with the World's Fair Station hand cancellation. This hand-back item has a cachet by L.W. Steahle, with a Nickel poster stamp which was one of 54 different sold to publicize the fair.



ÆTNA LIFE INSURANCE COMPANY
THE ÆTNA CASUALTY AND SURETY COMPANY
THE AUTOMOBILE INSURANCE COMPANY
THE STANDARD FIRE INSURANCE COMPANY
HARTFORD. CONNECTICUT

Visit the
**"LABORATORY
FOR LIVING"**

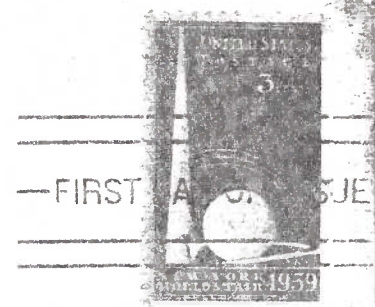
Sponsored by
**THE ÆTNA LIFE
AFFILIATED COMPANIES**

Business Systems and
Insurance Building

**NEW YORK
WORLD'S FAIR**

**First Day Cover
April 1, 1939**

N.Y.W.F.
N-204

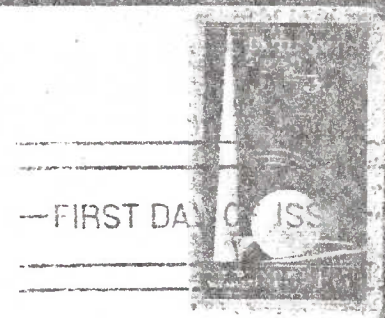
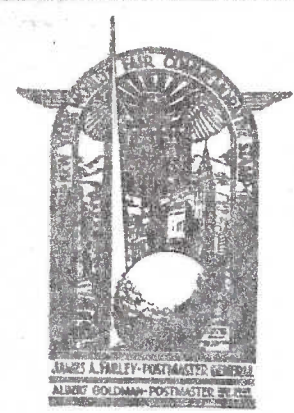


W. F. Patton, Asst. Secretary

151 Farmington Avenue

Hartford, Connecticut

PERSONAL



Consolidated Edison Company of New York, Inc.

4 IRVING PLACE

NEW YORK, N. Y.

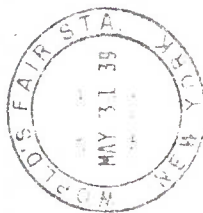
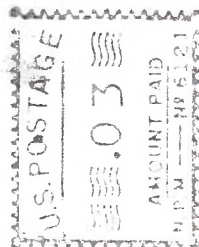
**VISIT THE CITY OF LIGHT • • • ON THE PLAZA OF LIGHT
NEW YORK WORLD'S FAIR 1939**

The first day cover ceremonies for the World's Fair stamp gave exhibitors a chance to promote their exhibits in advance of the official fair opening on April 30, 1939. (Top) Aetna Life Insurance created a cachet using the official World's Fair symbols to promote its 'Laboratory for Living'. (Bottom) Consolidated Edison created this cachet to promote its 'City of Light' building. Note it uses a printed version of the Goldman cachet which was shown in rubber handstamp version on page three.

NEW YORK WORLD'S FAIR 1939

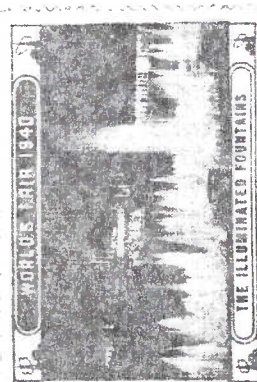
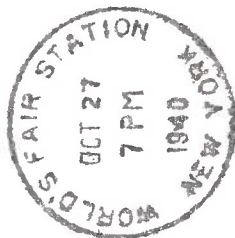
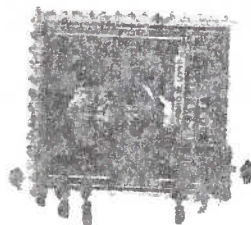
ADMINISTRATION BUILDING

WORLD'S FAIR, NEW YORK



THE WORLD'S FAIR OF 1940
IN NEW YORK

FOR PEACE AND FREEDOM
ADMINISTRATION BUILDING, WORLD'S FAIR, NEW YORK



NOW or NEVER
CLOSES FOREVER

October 27th

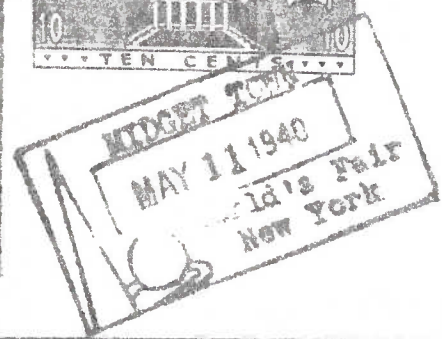
GO NOW

WORLD'S FAIR
NEW YORK

Fair Corporation stationery both seasons. The first season opened April 30, 1939 and closed October 31, 1939. Its theme was 'Building the World of Tomorrow' and used the tryon and perisphere as design identification. April 30, 1939 was also the first day of operation for the railroad post officecar. The second season opened May 11, 1940 and closed October 27, 1940. Because of the advent of war its theme was 'For Peace and Freedom'.

WORLD'S FAIR, NEW YORK.
- FIRST DAY -
AND OFFICIAL OPENING.

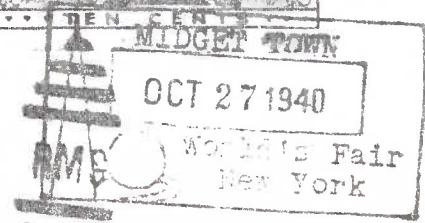
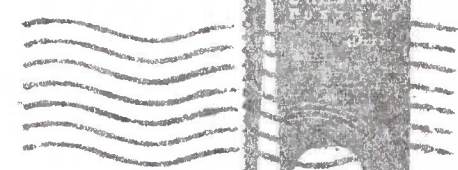
MIDGET CITY.
1940 - May 11th - 1940



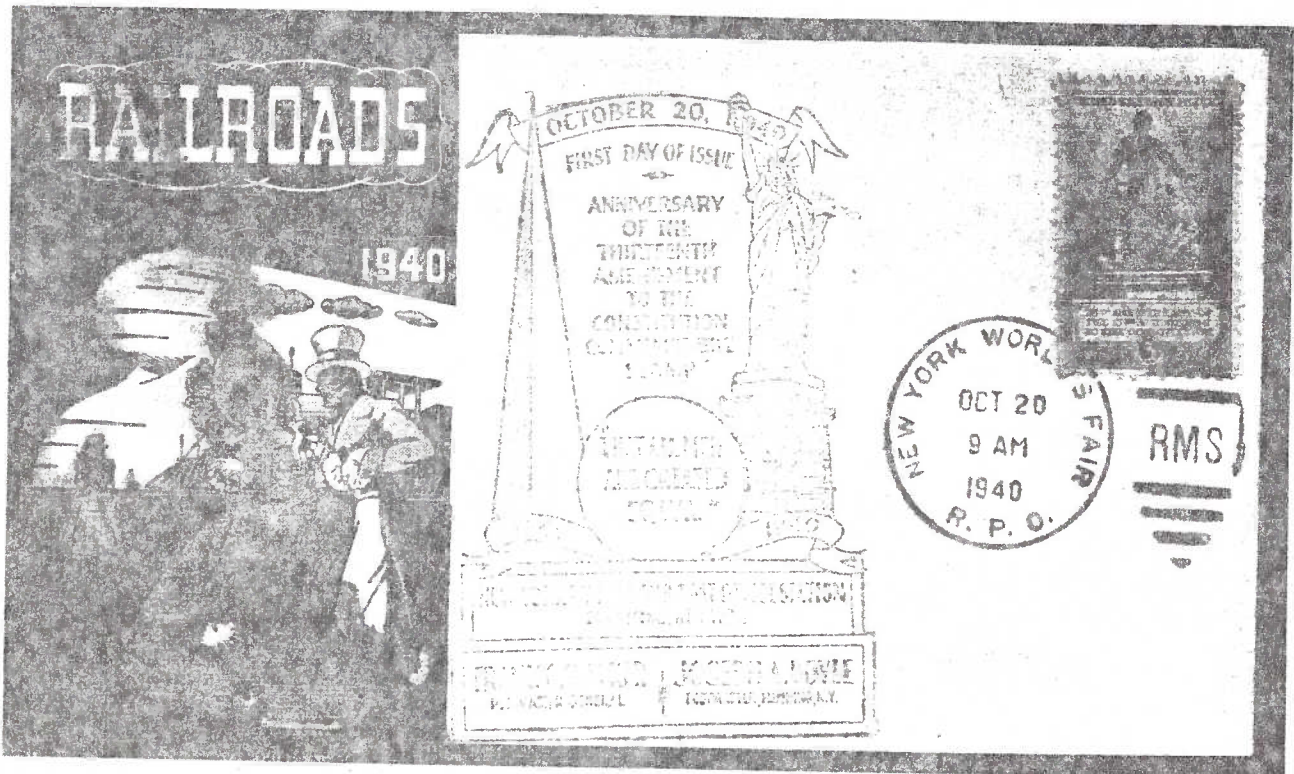
Midget Town was a fully operating postoffice located in the Amusement Zone, under government permission but it was only for mail on the fairgrounds. The postoffice was staffed entirely by midgets. Its cachet, stamp and cancellation are seen above. Below is an envelope printed by Morris Gest for the second season. It has a last day cancel from the Midget Town post office as well as a last day cancel from the RPO. See Whole #3 for William Duncan's article discussing this RPO operation in more detail.

May 11, 1940 was the 'first day of issue' for the Midget Town Cinderella stamp.

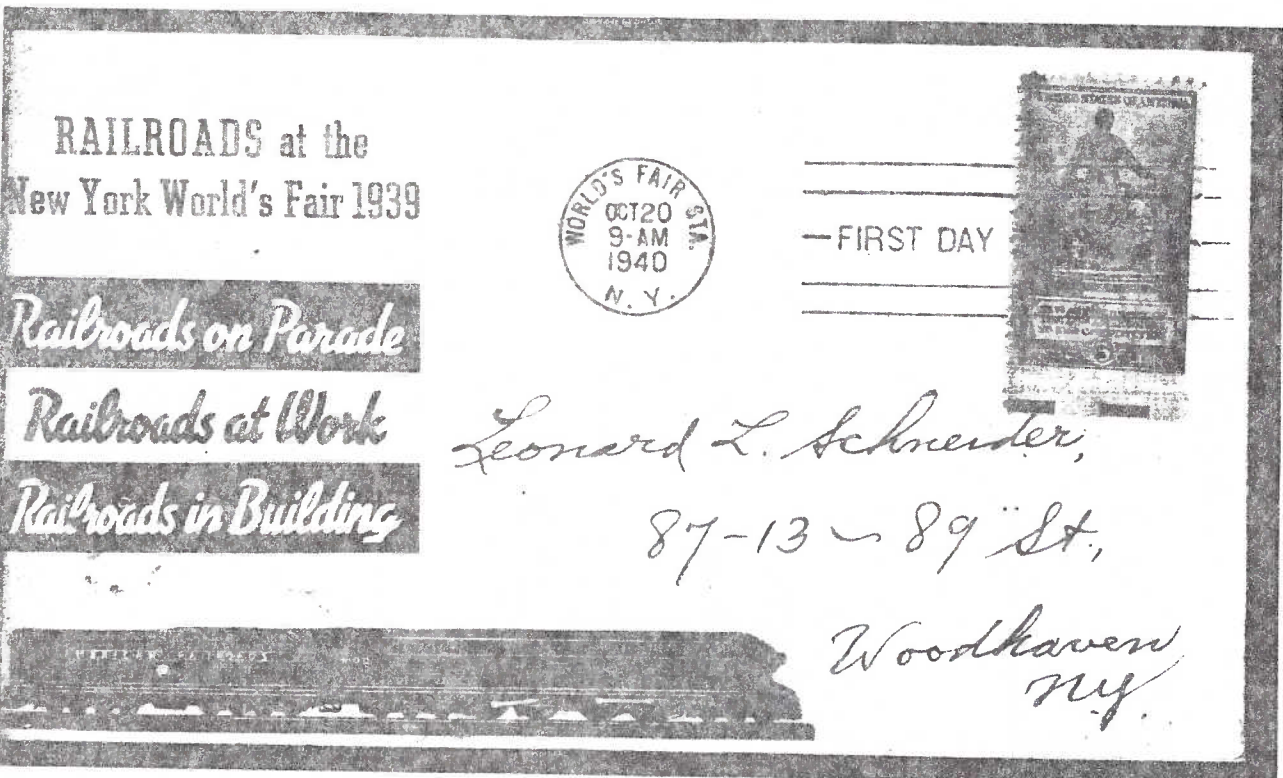
Commemorating the
**FIRST DAY AND THE
LAST DAY OF THE
WORLD'S FAIR, NEW YORK**
May 11th and Oct. 27th, 1940



Mr. James D. Midgley
8 Glendale Avenue
Providence, R. I.

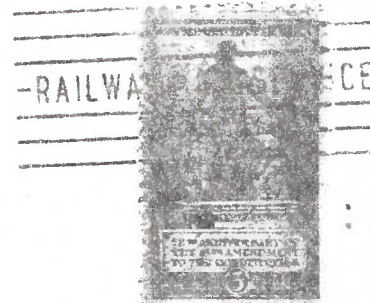


The first stamp to be issued only at a World's Fair on its first day was the 3¢ Emancipation 13th Amendment issue. Other stamps had been released at expositions previously for their first days but none exclusively so. The two cachets seen here were sponsored by the Eastern Railroad Conference. (Top) Hand cancellation at the Railway Mail Car with its RPO duplex. (Bottom) Regular World's Fair station machine cancel with a railroad car cachet.



75th Anniversary

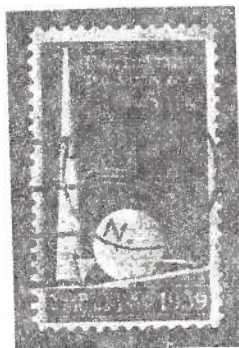
*Adoption of the 13th Amendment
to the Constitution
Abolishing Slavery*



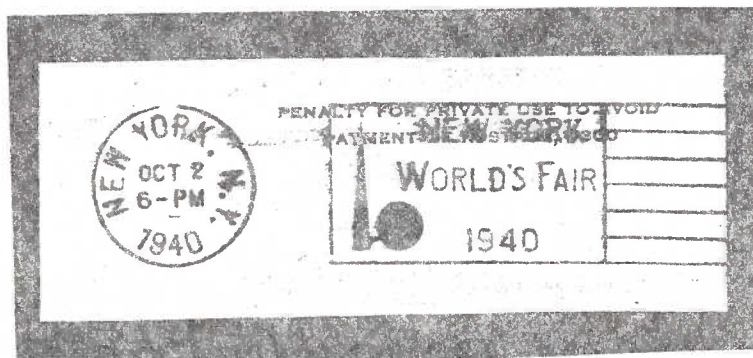
Mrs. Emil Behak
227 No. Oraton Pkwy
East Orange, New Jersey

FIRST DAY OF ISSUE

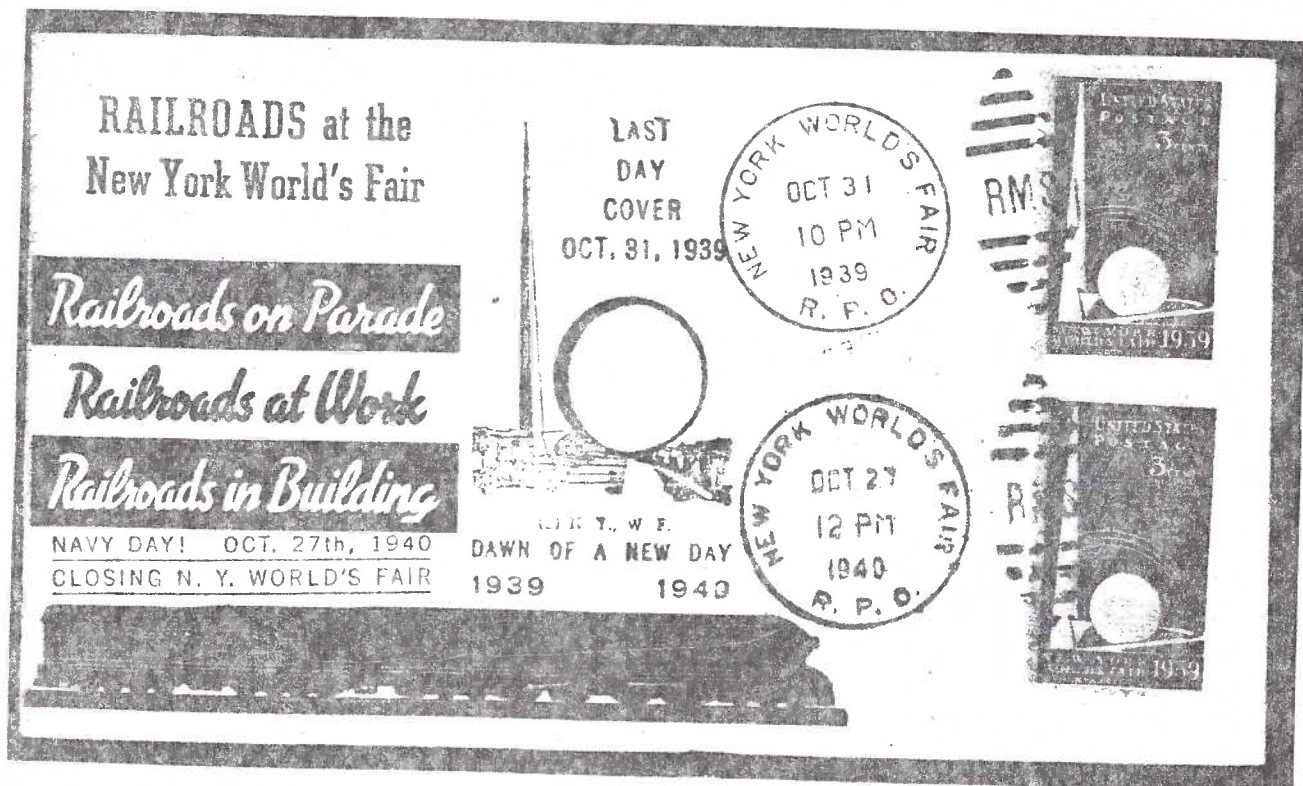
An Artcraft cachet used on the 13th Amendment first day cover with a machine cancel from the Railway Mail Service at the fair.



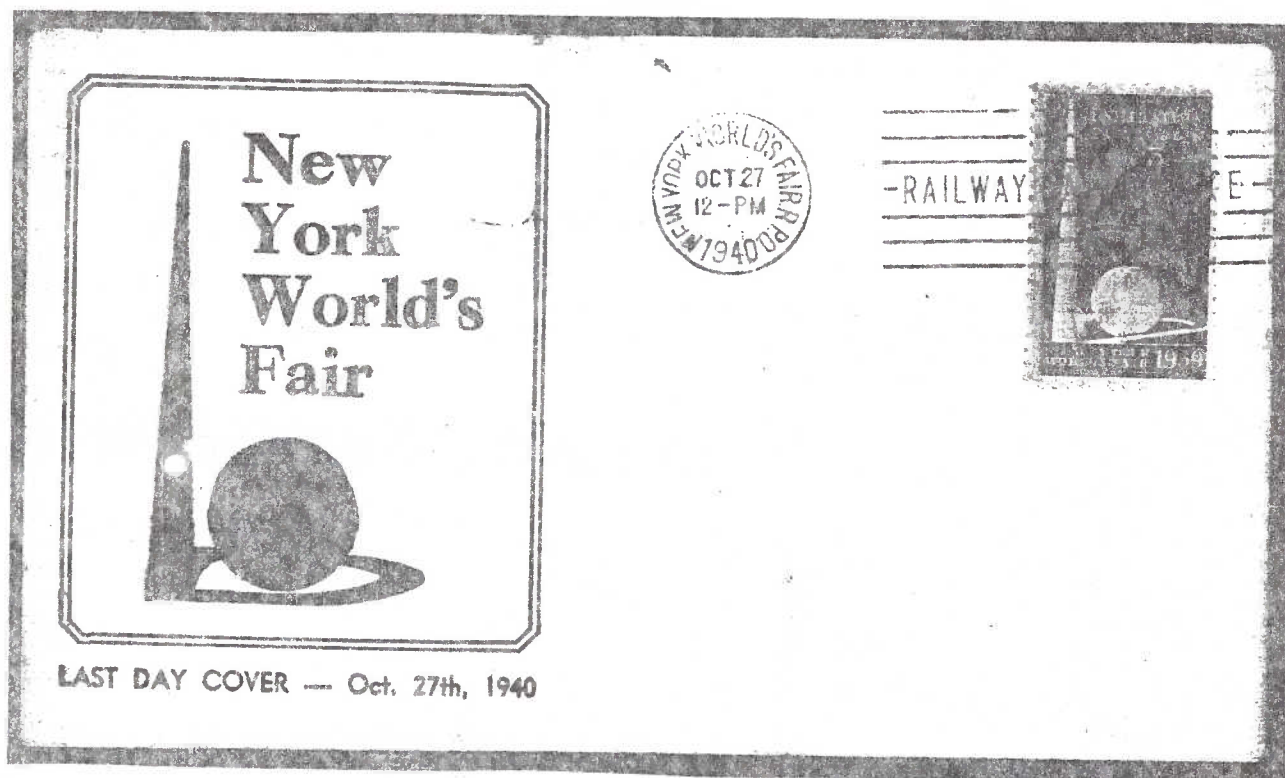
Only a few of the stamps were taken to the railway post office for first day servicing and those few must be considered one of scarcer official first days for the RPO car was on the fairgrounds which was the official first day site.



The slogan used to promote the fair on all mail from New York in 1940. This slogan was first used April 12, 1940, in New York City. The first time it was used at the fairgrounds was on June 27, 1940.



Last day cancellations (hand version) of the RPO for both seasons at the fair combined with a Navy Day 1940 cachet, as that fell on the last day of the 1940 season.



With this the New York World's Fair closed forever. A quarter century later New York would again host a World's Fair.

SMUGGLING REVOLUTIONARY WAR SPY LETTERS



Abraham Woodhull was an important figure in the Long Island underground that supplied General George Washington with vital information concerning the enemy strengths, movements and disposition of materiel. Here pictured is his Setauket home which stood across the water from Strong's Neck, on the western slope of which could be seen "Nancy's Clothesline" from which the arrangement of drying wash signalled the landing of a whaleboat that would carry messages across the Sound.

The messages were usually brought out from New York City by Setauket Tavern Keeper Austin Roe and taken across the Sound by whaleboat commander Caleb Brewster. Thomas Bayles of Middle Island provided the picture here used. He sent a picture of the old house to Miss Kate W. Strong, Setauket's historian, in 1947 and her reply adds to the legend:

My Dear Mr. Bayles:

I am delighted to have the picture of the Woodhull place, as I did not have a good picture of it.

I always understood the smaller end was built by the first Richard who died in 1696. From then on it was always owned and lived in by the family. Abraham Woodhull the spy lived there. Who built the larger part I do not know.

When I first remember the mother, two sisters and either four or five brothers lived there. The "women folk" all died in one winter. After that no woman was allowed in the house. At the time of the fire there were three brothers living there. Richard the oldest told me if he had not eaten watermelon and had indigestion they would have all died in their beds.

NATIONAL AIR MAIL WEEK -- May 15th - 21st, 1938

by William J. Duncan

In 1938, the Post Office Department celebrated the 20th anniversary of the first scheduled domestic air mail service which had operated between Washington, Philadelphia and New York.

As part of the celebration Postmasters were requested to solicit the aid of local organizations to sponsor cachets for use on air mail articles mailed at the local post office during National Air Mail Week.

FREEPORT-NEWARK

FLIGHT

MAY, 19, 1938

Edward A. Rice POSTMASTER

Bill Litterer PILOT

NATIONAL AIR MAIL WEEK

MAY 15th - 21st

WE ARE COOPERATING

FREEPORT CHAMBER OF COMMERCE

FREEPORT NEW YORK

The Freeport Cachet



MR. JOSEPH JENKINS

157 ELIZABETH AVE.

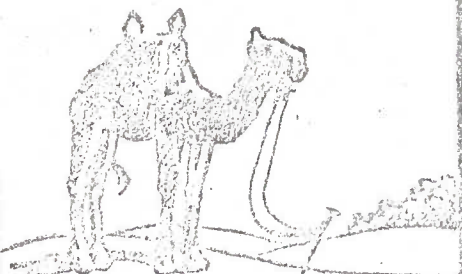
NEWARK, NEW JERSEY.

NATIONAL AIR MAIL WEEK

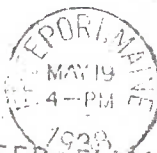
MAY 15-21

DESERT OF MAINE

Nature's Miraculous Sea of Sand



AT FREEPORT "The Birthplace of Maine"



PIONEER FLIGHT

VIA AIR MAIL

Assistant Postmaster

Freeport

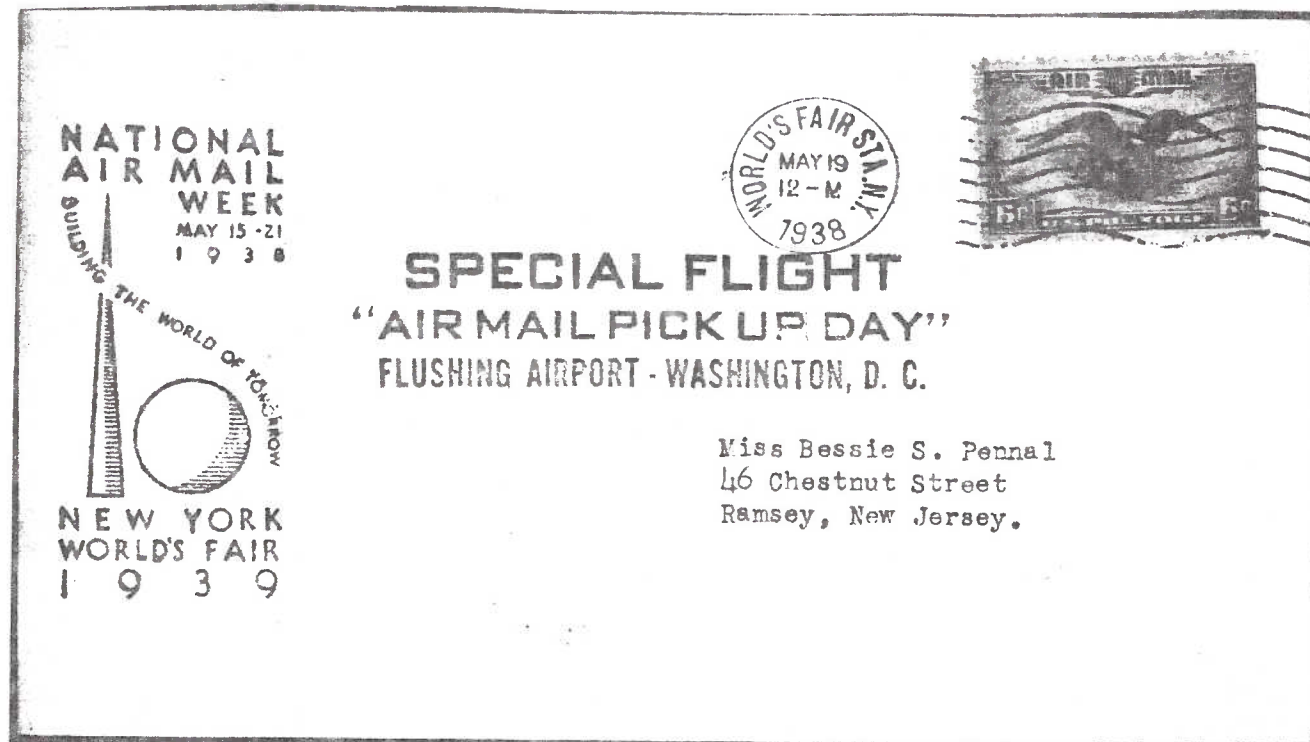
New York



One of more interesting cachets used to L.I.

The Freeport Chamber of Commerce not only sponsored a cachet, as requested by Postmaster Edward A. Rice, but Mr. Abraham Litwak, a Chamber member who was also a licensed pilot, flew a pouch of mail from the Freeport post office on May 19th to the Air Mail Field, Newark, N.J. which was at that time the postal unit handling airmail to and from New York, N.Y.

The May 19th flight was in a single engine open cockpit biplane from an open field south of Merrick Road and east of Meadowbrook Parkway, near the present site of the Town of Hempstead Merrick landfill.

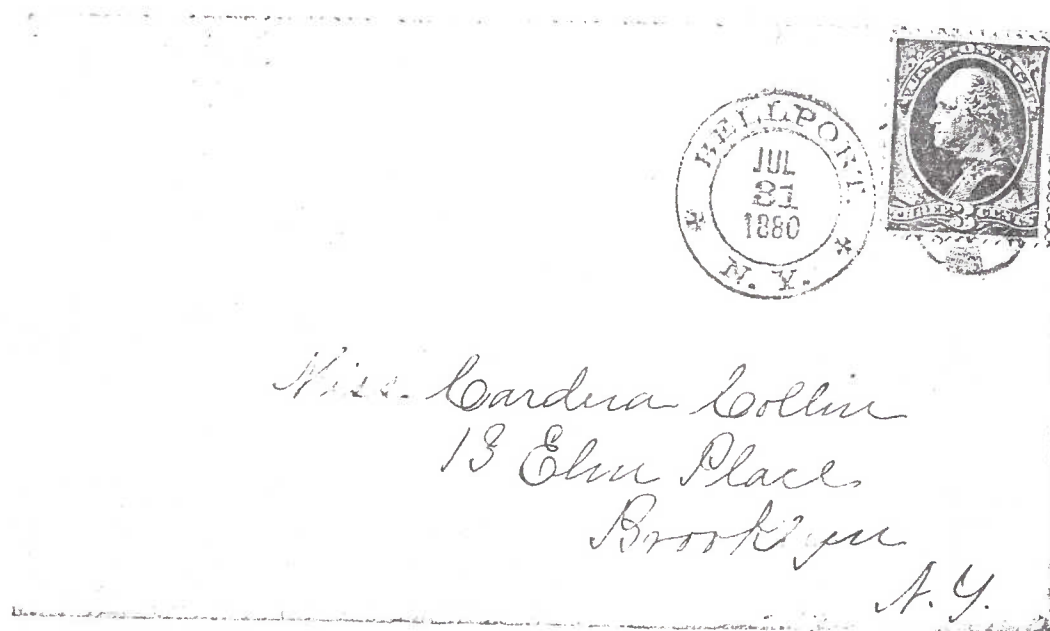


Example of the Flushing L.I. cachet used at the World's Fair.

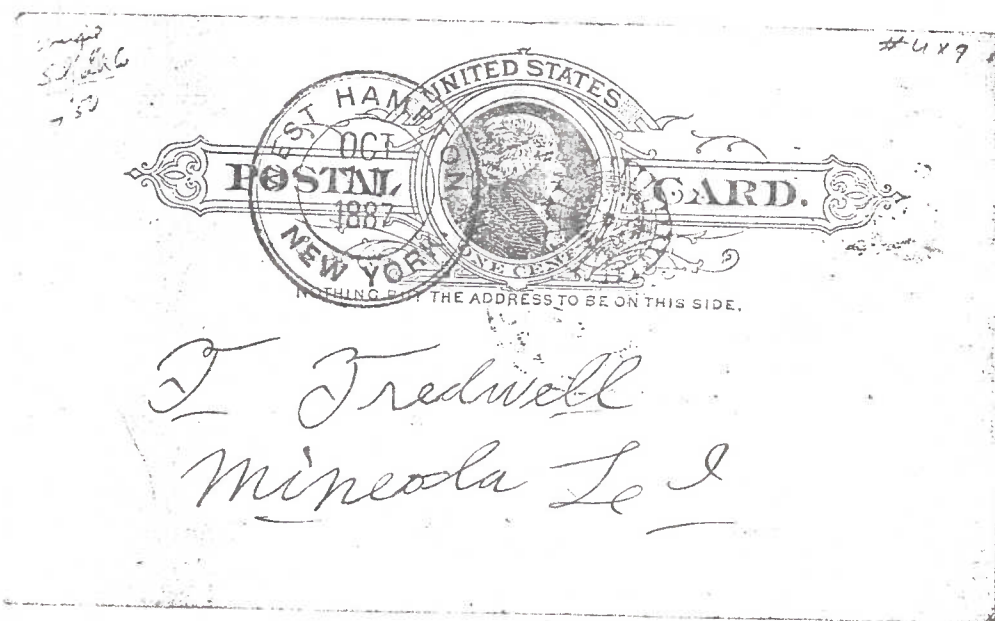
SELECTED LONG ISLAND FANCY CANCELS

by Carl Baker

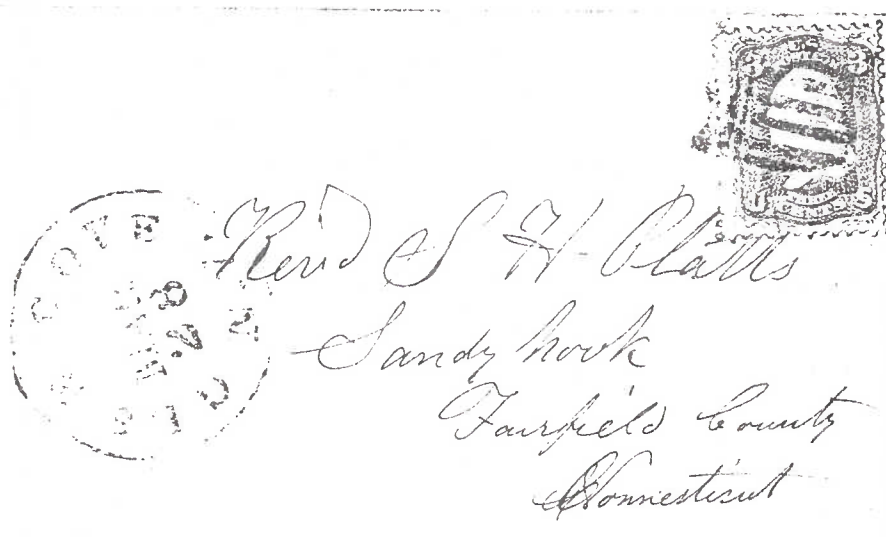
There has been little documentation thus far of the fancy cancels of Long Island. In order to spur research along these lines I should like to offer some examples from my collection.



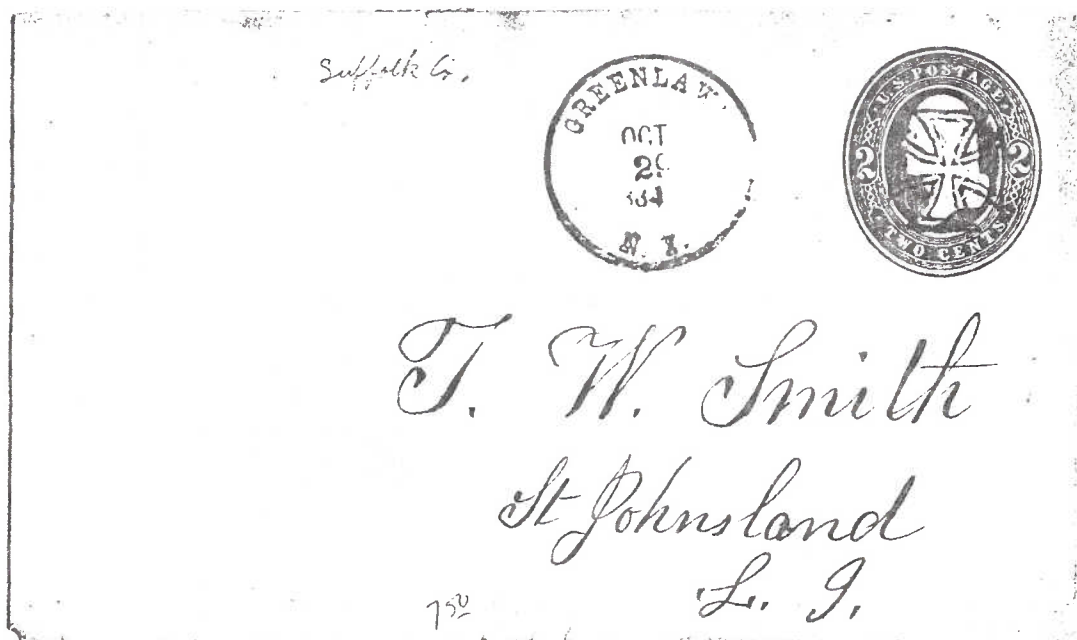
Red double circle from Bellport, N.Y. shows an interesting 1880 duplex killer.



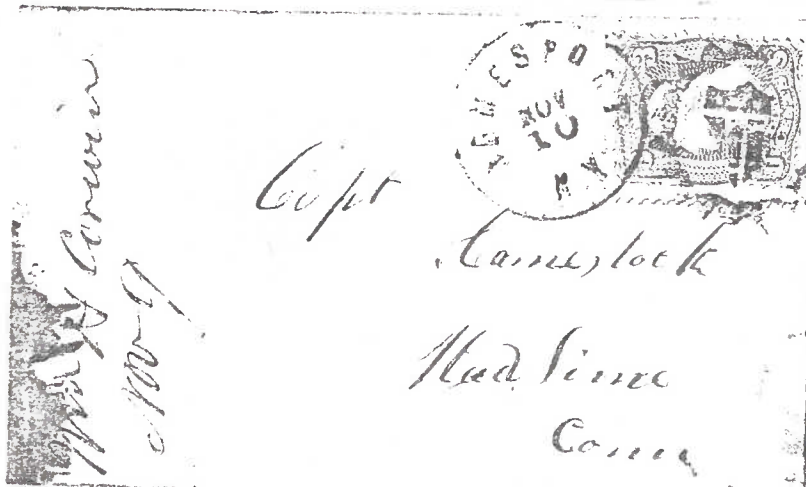
East Hampton use of the Hammond patent 'Wheel of Fortune'. This cancel is depicted in the Hammond ad reproduced in U.S. Cancellation Club News November 1906 (Vol. 8, No.6) However, it is only reported for Alexandria Bay, Bangall, Clinton, Coeymans and West Hampton. Apparently East Hampton followed West Hampton.



Black Glen Cove circle and black shield killer on #65.
While this item is recorded as PS-ST37 in the Eno fancy
cancellation book, the illustration does not appear to
closely match this example.

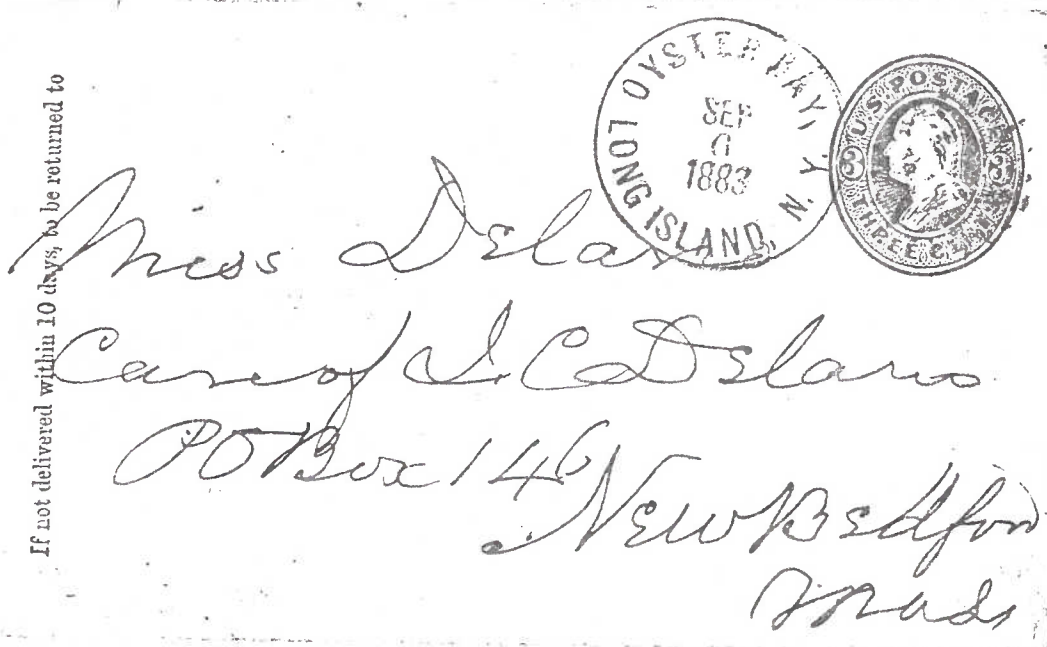
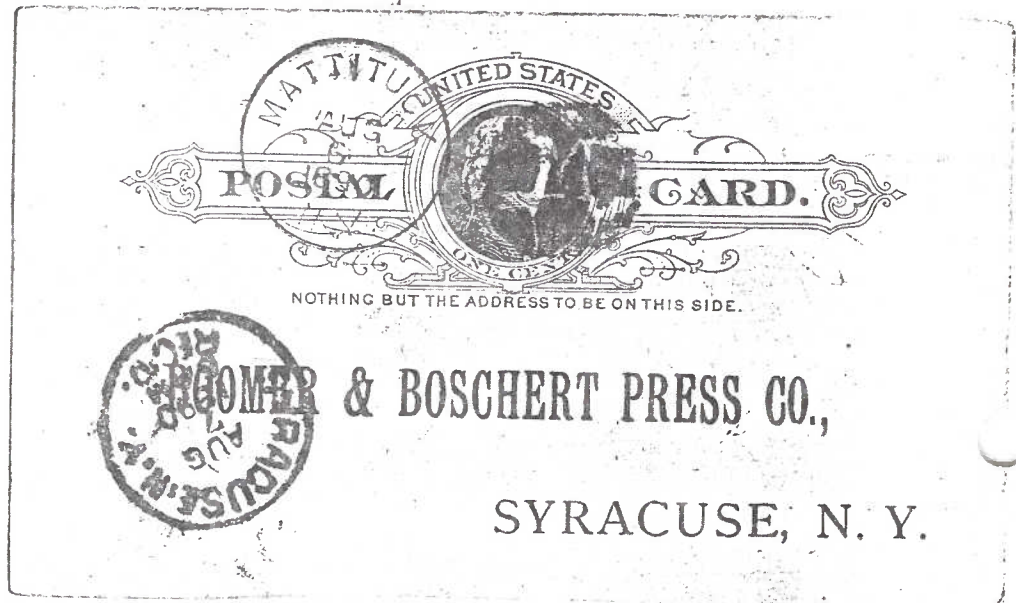


Greenlawn Maltese Cross. These Maltese are widely used stock can-
cellation devices in the 1880's. This cds belies the postoffice
records which show the town as 'Green Lawn' prior to 1895.



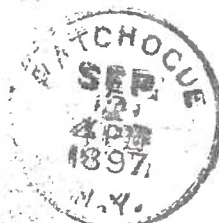
Black cds and Jamesport L.I. shield reported as PS-FC46 in the Eno fancy cancel book. This example suggests there are three stars at top not two dots as in that book's drawing.

(Below) The black Mattituck reverse 'M' dated 8/6/1890 on a postcard to Syracuse, N.Y.



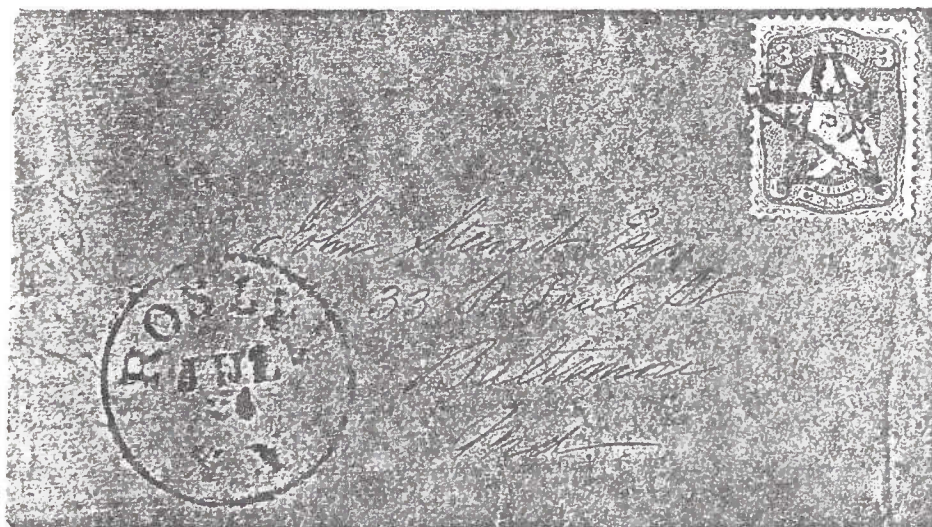
One of the few Long Island cds's to actually use the term 'Long Island' is this dated 9/6/1883 example from Oyster Bay. Oyster Bay is recorded in Willard's United States Two Cent Red Brown of 1883-1887, as having a particularly delicate star killer (Willard #299) which he records in magenta. This may be it in a poorer strike caused by the embossed envelope.

*Roe's Hotel,
Patchogue,
L. I.*



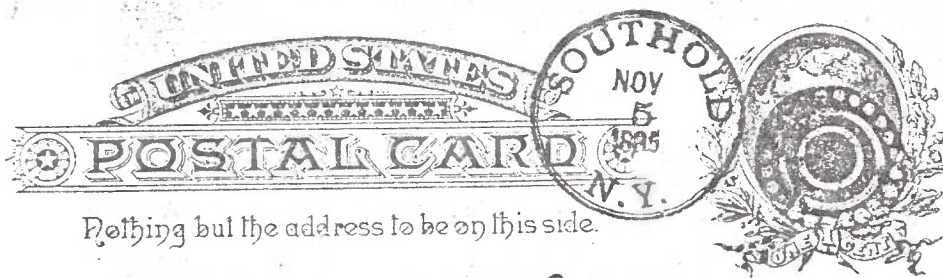
*Mrs A. J. Corsa
No 640 Monroe St
Brooklyn*

Patchogue negative star on a particularly delicate hotel corner card. It is dated 9/2/1897. Not among the styles recorded by Willard for 1883-7.

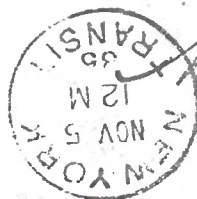


This black Roslyn, N.Y. star with dot in center is not recorded on cover in the Eno book where it is ST-D-13. This tied example authenticates it.

This black Southold fancy reverse multi-ringed circle killer is dated here 11/5/85. It is on a UX9. Willard picked this up from Herst-Sampson (#1081) where it is ascribed to Whallonsbury, N.Y. Willard lists it as #559.



Nothing but the address to be on this side.



*Morse & Co
Bangor
Maine*

FLAG CANCELLATIONS OF LONG ISLAND II. The Early Brooklyn Post Offices

by Calvet M. Hahn

As part of the background for this study of flag cancellations and the offices that used them in Brooklyn, I felt it advisable to get lists of the Brooklyn stations and their addresses from the beginning of the flag cancel era to 1920. Because I did not carry my notes with me when I visited the New York Public Library, I pulled the City Directories and Brooklyn telephone books from 1884 onward. This meant that I had a great deal of useful material that was not immediately relevant.

In consequence, this section will discuss the early offices of Brooklyn so that a more rounded picture appears. To do this I have supplemented the Directories with material derived from the various philatelic lists of Brooklyn post offices such as the ones published by Kaiser, DeGraff and John Kay and Chester Smith, with particular attention to the last as the most complete and up-to-date.

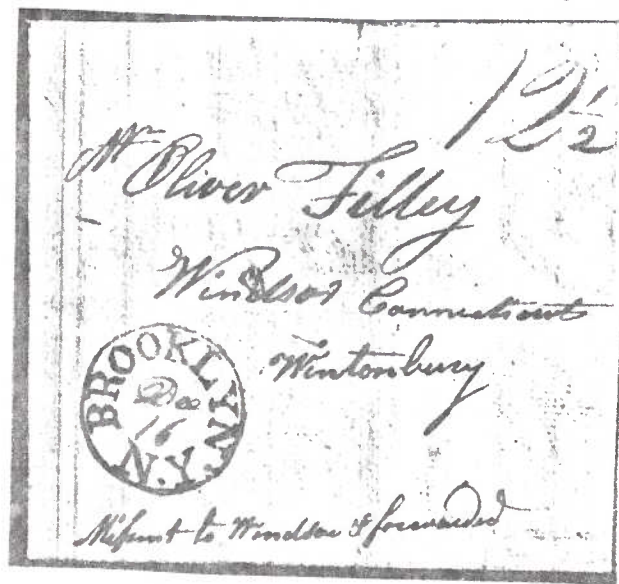
The first post office in Kings County which is Brooklyn today was Brooklyn. It made its first returns on July 1, 1803 so it was established somewhat earlier. In the pre-Civil War period we get the following:

Brooklyn (pre-7/1/1803)	Gravesend (12/20/45-4/30/96)
Flatbush (8/10/1814-2/28/94)	Flatlands (6/10/1847-4/30/96)
Williamsburgh (2/10/1829-9/2/73)	Greenpoint (7/14/1849-9/2/73)
Fort Hamilton (2/10/1833-4/30/96)	Canarsie (9/24/52-10/11/59)
East New York (1/23/1838-10/7/80)	Cresco (5/24/54-5/1/88)
New Utrecht (1/21/1839-3/18/86)	Bay Ridge (1/21/58-10/10/60)

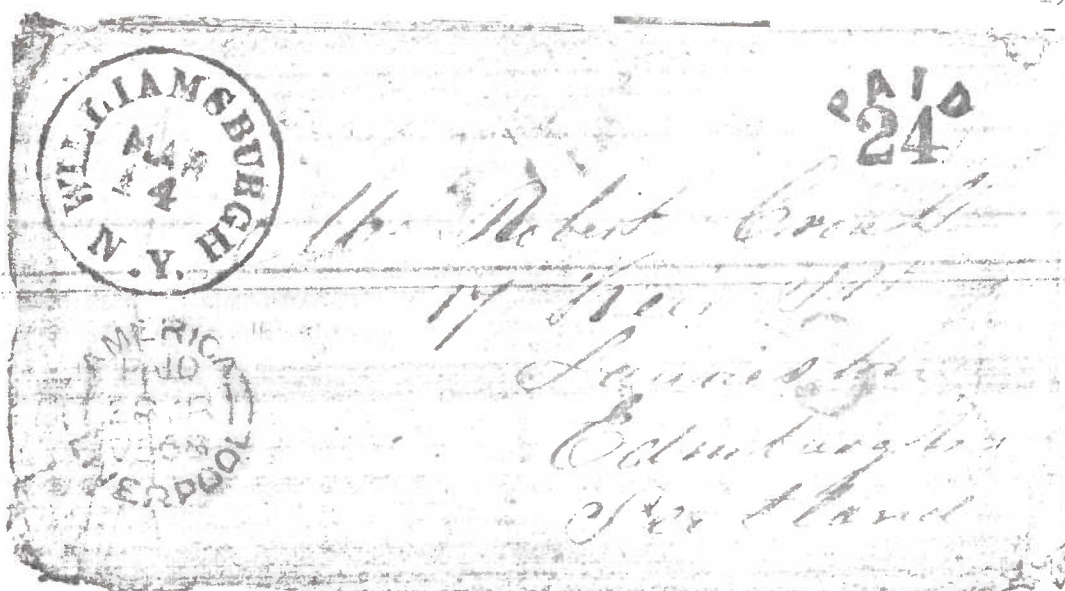
Of these Bay Ridge went out of existence for a few years and was then re-established (6/21/52-12/1895). The same situation occurred with Canarsie which was reestablished (3/18/03-4/30/96). Both Williamsburgh (9/2/73-12/86) and Greenpoint (9/2/73-12/86) became part of Brooklyn in 1873. The name of the Cresco station was changed to Parkville (5/1/08-8/1/94) while a Brooklyn substation named Van Brunt was created in 1876 and lasted until December 1880.

Four other post offices were established before the City Directory list of June 1884. These were:

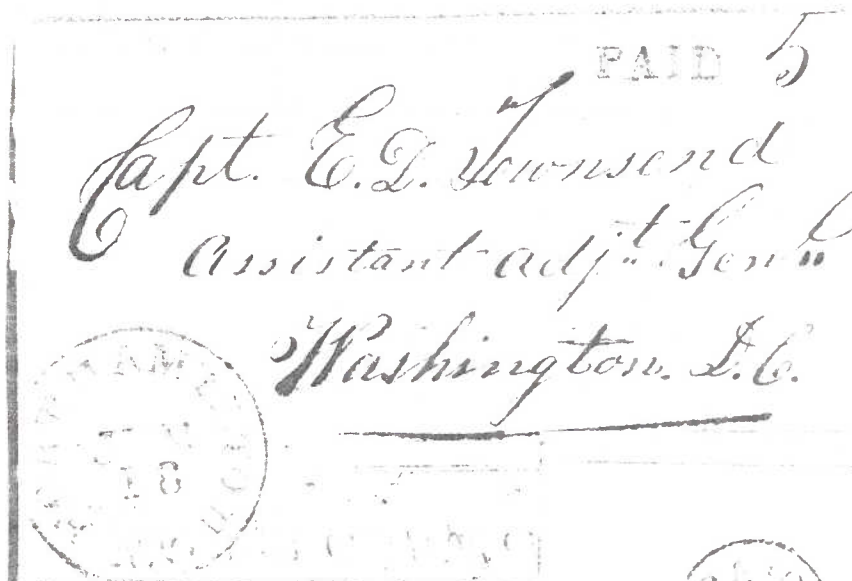
Brevoort (/ /1875-12/86)	Windsor Terrace (12/12/1881-9/27/82)
Brighton Beach (7/23/78-10/13/79)	Sheepshead Bay (7/10/1882-4/30/96)



The earliest Brooklyn handstamp I record, as well as the only one of this type, is this bright magenta item postmarked December 10, 1818 which was missent to Windsor, Conn. and forwarded to Wintonbury.



A rather unusual Williamsburgh cover is this 1850 example with a black cds and arc PAID/24. Addressed to Edinburgh, Scotland, which went via the Cunarder Persia that left New York May 11th and arrived Liverpool on the 23rd. There is a red '3' at right showing credit to the U.S. The letter was backstamped on arrival on the 29th.



One of the early letters out of Ft. Hamilton is this example with a red 34mm cds dated June 18, 1851 and addressed to the Assist. Adj. General in Washington. It is ex-ward.



Mrs. Richard Smith
No. 6 Sanson St.
Philadelphia.
Care of Johnson & Co.

East New York had two handstamps—a 30mm black cds and this 34mm balloon style—that were used in the stampless period. This example of 6/2/5—was used circa 1853-4. This is from the Dorr collection.

This letter from New Utrecht is dated July 17, 1848 and discusses life as a teacher in that town as well as the joys of sea bathing. The writer sings for \$400 a year in the Dutch Reform Church and wants to give up teaching to become an 'agriculturist' in western New York. The letter is rerated from 5¢ to 10¢ for over 300 miles.

*New Utrecht
July 17*

[Signature]

*W. N. Page Esq.
Perry Village
Wyoming Co.
N.Y.*

GREEN POINT, N.Y.
AUG 13

PAID
3

Green Point is known with two styles of straightline-- a black 33x3mm single line and this black 36x8mm two-line version. I record another used on 6/15. This 8/13 version was used in 1852. It is ex-Dunsmoor and Ed Mayer.

*Prove Lawrence Esq.
Syracuse*

N.Y.

1852

In the 1884 Brooklyn directory there are only five stations:

Main--319 Washington St., James McLee P.M. Charles M. Orton, Assist. P.M.
Brevoort--1250 Fulton, Louis Baxter, Supt.
Greenpoint--Greenpoint and Franklin, Edward Brooks, Supt.
Van Brunt--5th Ave between 11th and 12th St., Ed McMannus, Supt.
Williamsburgh--South Fifth, corner Fourth, Wm. B. Hopkins, Supt.

There were ten other stations in the county:

Bay Ridge
Canarsie
East New York

Flatbush
Flatlands
Fort Hamilton

Gravesend
New Utrecht
Parkville
Sheepshead Bay

In 1885, Samuel Smith took over the assistant postmastership of Brooklyn while in 1886, B.F. Conlin took over as superintendant of the Van Brunt station. A new station was erected in Brooklyn, Station S located at Broadway and Williamsburgh Ave. with J.L. Broome as Superintendant while the East New York Station was absorbed as the 26th Ward in East New York, at Penn Ave. near Atlantic with R.R. Wheeler as postmaster. Outside of Brooklyn a post office was erected at Coney Island (1/18/86-

4/30/96) while the New Utrecht post office was closed and replaced by one at Bath Beach (3/18/86-4/30/96).

In the Directory of 1887 we find Joseph C. Hendrix is the new Brooklyn postmaster with Samuel Smith continuing as his assistant. The Brooklyn stations were renamed with alphabet designations so that we now have the following:

Main --319 Washington
 B (Brevoort)--1250 Fulton
 G (Greenpoint)--300 Manhattan
 S --Broadway & Wil'by
 V (Van Brunt)--400 Fifth
 W (Williamsburgh)--55th corner Bedford
 E (East New York)--Atlantic, corner Hendrix
 F (Flatbush) Flatbush, corner Atlantic (to 1894)
 C --546 Fulton
 H--Hopkinson corner Herkimer

By 1888 when the Directory was published in June, the Greenpoint address was Manhattan, corner of Milton and two new stations appeared:

D (DeKalb)--089 DeKalb to 12/1893
 R --302 Van Brunt

From 1887 until the Directory of June 1896, we get the following new post offices erected outside of Brooklyn:

Bath Beach Junction (5/15/88-5/5/88)
 reestablished as Blythebourne (6/5/88-4/30/96)
 Bensonhurst (5/22/89-4/30/96)
 Gravesend Beach (1/20/87-4/30/96)
 Lawn Wood (5/17/92-4/30/96)
 Van Pelt Manor (8/20/90-12/95)
 West Brooklyn (1/2/92-4/30/96)
 Wood Lawn (5/14/1890-5/17/92) to Lawn Wood

Within Brooklyn, the following stations were added or created by absorbing previously independent post offices:

Station C--12/1889
 Station H--12/1889-12/1894
 Station K--12/1889-12/1894
 Station A, 12 Graham St.--12/1890
 Station M--12/1890-12/94
 Station X--12/1890-12/94
 Station B, 1208 Fulton (from B-Brevoort)
 Parkville--8/1/94-1/1/95 (from Parkville)
 Station 29 (1/1/95) (from Parkville station)
 Manhattan Beach--5/4/95

On April 30, 1896, the postal service of Kings County was reorganized so that all offices became stations of the Brooklyn post office. As this is also the year in which the flag cancellation was introduced into the Brooklyn service, the City Directory list of station addresses of June 1896 is particularly significant. That list follows.

June 1896 Brooklyn Stations

Main--Tillery and Adams--A.T. Sullivan P.M.; John C. Cody, Assist.
 A--14 Graham
 B--1266 Fulton
 C--1191 Third
 D--1928 Fulton

Brooklyn Stations o/1890 (cont)

E -- 2648 Atlantic
 G -- 328 Manhattan
 H -- Bath Beach
 K -- Blythebourne
 L -- Canarsie
 M -- Coney Island
 N -- Fort Hamilton
 O -- Sheepshead Bay
 S -- 1251 Broadway
 V -- 277 12th St.
 W -- Bedford c. 55th
 Flatbush -- 830 Flatbush
 Manhattan Beach-- Manhattan Beach

Substations:

1 -- Henry, c. President	28 -- 772 Halsey
2 -- 848 Fulton	29 -- Lawrence c. N. Boulevard
3 -- 132 Flatbush	30 -- 272 3rd
4 -- 586 Myrtle	31 -- Coney Island Rd. c Greenwood
5 -- 540 Union	32 -- 252 5th
6 -- 302 Van Brunt	33 -- 592 3rd
7 -- Avenue C, Cumberland	35 -- Manhattan c. Bedford
8 -- 38 Atlantic	40 -- E. Parkway c. Thatford
9 -- Hoyt, c. Union	41 -- 800 Jamaica
10 -- Sands, c. Jay	45 -- 1161 Myrtle
11 -- 508 Court	50 -- 1280 Third
12 -- DeKalb, c. Ryerson	51 -- Bay Ridge
13 -- 4 Wallabout Market	52 -- W. Brooklyn
14 -- 129 Hamilton	53 -- Lefferts Park
15 -- 692 Grand	54 -- Van Pelt Manor
16 -- 253 N. 2nd	55 -- Bensonhurst
17 -- Bedford c. N. 7th	56 -- Gravesend Beach
20 -- De Kalb, c. Tompkins	57 -- Gravesend
21 -- Fulton c. Rockaway Ave.	58 -- Lawnwood
22 -- 1076 Bedford	59 -- Flatlands
24 -- Myrtle c. Wyckoff	60 -- Vanderveer Park
25 -- Broadway c. Halsey	61 -- Ft. Hamilton
26 -- Reid c. Hancock	
27 -- Myrtle c. Hamburg	

In 1901 the Main postoffice was listed at Washington corner of Johnson and the new postmaster was Francis H. Wilson. Stations A through G stayed the same with the others changed as follows in the 1902 Directory:

Bath Beach - Bath Ave. near 19th
 Blythebourne - 13th Ave., c. 55th
 Canarsie - Station L
 Coney Island - Arcade Pl., near Surf
 Ft. Hamilton - 4th Ave. c. 99th
 Sheepshead Bay - Voorhies Ave. n. 523rd
 S -- Broadway c. Greene
 V -- 5th c. 9th
 W -- 220 Broadway
 Flatbush - 830 Flatbush
 Manhattan Beach - Manhattan Beach Hotel

Substations:

1 Henry c. President	7 Ave C, c. Cumberland
2 Greene c. Cumberland	8 38 Atlantic
3 132 Flatbush	9 41 Flatbush
4 586 Myrtle	10 Sands, c. Jay
5 40 Union	11 Manhattan c. Siegel
6 302 Van Brunt	12 DeKalb c. Ryerson

Brooklyn Directory 1902 (cont.)

13	4 Wallabout Market	50	Barren Island
14	129 Hamilton	51	3rd c. 73rd
15	692 Grand	52	West Brooklyn
16	385 Metropolitan Ave.	53	Ovington c. 17th
17	Bedford c. North 7th	54	Main near 18th
18	Lee c. Rutledge	55	Broadway c. 2nd
19	746 Washington	56	Cropsey c. 24th
20	DeKalb c. Tompkins	57	Neck Rd. near Gravesend
21	Fulton c. Rockaway Ave.	58	Chestnut near Bay
22	1070 Bedford	59	Flatbush near Kings Highway
23	64 Grand	60	1433 Flatbush
24	Myrtle c. Wyckoff	61	3rd near 91st
25	Broadway c. Halsey	62	308 Count
26	Reid c. Hancock	63	Bayers c. Franklin
27	Myrtle c. Hamburg	64	422 Fulton
28	772 Halsey	65	435 Fulton
29	Foster Ave. Parkville	66	Sheepshead Bay 3 Tects Row c. Myrtle
30	606 Fifth	67	345 6th
31	62 Coney Island Ave.	68	36 Rockaway
32	252 Fifth	69	384 Broadway
33	592 Third	70	623 Wythe
34	89 7th	71	1186 Fifth
35	Manhattan c. Bedford	72	250 9th
36	435 7th	73	48 Broadway
37	759 Gates	74	Coney Isle Ave. and Ave. D
38	1726 Fulton	75	1092 Flatbush
39	300 Clinton	76	495 Tompkins
40	E. Parkway c. Thatford	77	178 Albany
41	Fulton c. Crescent	78	725 Nostrand
42	2989 Fulton	79	962 Laf Ave
43	Schenck c. Glenmore	80	E 92nd c. Flatlands
44	R.R. Ave. c. Liberty	81	Broadway c. Gates
45	1161 Myrtle	82	Broadway c. Humb't (?)
46	Myrtle c. Nostrand	83	451 Graham
47	579 Broadway	84	70 Hamburg
48	DeKalb c. Clermont	85	Evergreen Ave.
49	63 Morgan		

The City Telephone Books were used for 1905, 1910 and 1920. No substations were listed in the 1920 book. Throughout the Main Post Office continued at Washington and Johnson. The stations were as follows:

	1905--Jan.	1910--Jan.	1920--Feb. (Tel. Exchange)
Sta. A	16 Graham	(same)	601 Broadway (Stage)
B	1206 Fulton	(same)	(same) (Bedford)
C	5121 3rd	(same)	5009 6th (Sunset)
D	1923 Fulton	(same)	1915 Fulton (Decatur)
E	2048 Atlantic	2084 Atlantic	2581 Atlantic (E. New York)
F	--	830 Flatbush	--
G	860 Manhattan	(same)	744 Manhattan (Greenpoint)
J	--	Myrtle & Wyckoff	--
L	132 Flatbush	LIRR Depot c. Flatbush	--
P	--	1781 Pitkin	70 Thatford (E. New York)
S	1202 Broadway	(same)	1075 Lafayette (Bushwyck)
R	--	Nostrand Ave.	--
T	--	170 Hamilton	155 Hamilton (Henry)
V	5th Ave. & 9th	299 9th	303 8th (South)
W	Broadway & So. 8th	220 Broadway	220 Broadway (Williamsburg)
Y	--	--	Gravesend & 47th (Midwood)

Brooklyn Post Office Stations 1905, 1910 and 1920 (cont.)

Station	1905	1910	1920 (Tel. Exchange)
Flatbush	830 Flatbush	--	908 Flatbush (Flatbush)
Bath Beach	1830 Bath Ave.	1829 Bath	19th & 80th (Bensonhurst)
Elythebourne	13th Ave. & 55th	5424 13th Ave.	(same)
Coney Island	Surf Ave., Coney Isle.	Surf Ave C.I.	(same)
Ft. Hamilton	4th Ave. & 99th	9824 4th Ave.	9015 Fifth (Shore Rd.)
Sheepshead	Vornees Ave. Sheepshead B.	1700 Shore Rd.	Avenue U (Coney Isle)
Arverne	--	Arverne L.I.	--
Astoria	--	Van Alst Ave.	--
Hollis	--	Hollis L.I.	--
Jamaica	--	328 Fulton	--
L.I. City	--	51 Jackson	--
Queens Sta.	--	Queens L.I.	--
Richmond Hill	--	Lefferts Ave.	--
Union Course	--	Union Course LI	--
Woodhaven	--	Woodhaven LI	--
Bush Terminal	--	--	34th (Sunset)
Sub Sta. 23	--	--	1895 Sheepshead (Sheepshead)
Kensington	--	--	305 Church (Flatbush)
New Lots	--	--	940 Glenmore (Cypress)
Pratt	--	--	219 Willoughby (Prospect)
Ridgewood	--	--	1800 Myrtle (Evergreen)
St. Johns	--	--	1234 St. Johns (Bedford)
Times Plaza	--	--	LIRR Depot (Prospect)
Vanderveer	--	--	Nostrand Ave. (Mansfield)

POST OFFICE SUBSTATIONS IN 1905

Hamilton 832...	Sub-Station No. 1.....	502 Henry
Main 1751...	Sub-Station No. 2.....	18 Greene av
Prospect 3549...	Sub-Station No. 3.....	1829 Fulton
Wmsburg 1896...	Sub-Station No. 4.....	586 Myrtle ave
Hamilton 823...	Sub-Station No. 5.....	40 Union
Hamilton 288...	Sub-Station No. 6.....	320 Van Brunt
Main 1800...	Sub-Station No. 7.....	Myrtle av & Cumberland
Main 1841...	Sub-Station No. 8.....	33 Atlantic av
Main 1905...	Sub-Station No. 9.....	41 Flatbush av
Main 1756...	Sub-Station No. 10.....	95 Sands
Wmsburg 1274...	Sub-Station No. 11.....	151 Moserole
Bedford 1511...	Sub-Station No. 12.....	DeKalb av & Hyerston
Wmsburg 470...	Sub-Station No. 13.....	4 Wallabout Mkt
Hamilton 212...	Sub-Station No. 14.....	120 Hamilton av
Wmsburg 452...	Sub-Station No. 15.....	802 Grand
Wmsburg 1495...	Sub-Station No. 16.....	285 Metropolitan av
Wmsburg 1487...	Sub-Station No. 17.....	Bedford av & N. Tin
Wmsburg 1033...	Sub-Station No. 18.....	Loc av & Rutledge
Prospect 1443...	Sub-Station No. 19.....	748 Washington av
Bedford 1639...	Sub-Station No. 20.....	DeKalb & Tompkins ave
East N.Y. 85...	Sub-Station No. 21.....	Fulton & Rockaway av
Bedford 1550...	Sub-Station No. 22.....	1070 Bedford av
Greenpt 1397...	Sub-Station No. 23.....	64 Grand
Wmsburg 1225...	Sub-Station No. 24.....	Myrtle & Wyckoff ave
Bushwick 593...	Sub-Station No. 25.....	1331 Bway
Bedford 1523...	Sub-Station No. 26.....	Hold av & Hancock
Wmsburg 1327...	Sub-Station No. 27.....	1315 Myrtle av
Bushwick 805...	Sub-Station No. 28.....	772 Halsey
South 113...	Sub-Station No. 29.....	94 Fifth av
South 505...	Sub-Station No. 30.....	72 Grand av & Winder Ter
Prospect 167...	Sub-Station No. 31.....	252 Fifth av
South 108...	Sub-Station No. 32.....	352 Third av
Prospect 238...	Sub-Station No. 33.....	439 Seventh av
Greenpt 64...	Sub-Station No. 34.....	Manhattan & Bedford ave
South 144...	Sub-Station No. 35.....	435 Seventh av
Bushwick 1004...	Sub-Station No. 36.....	759 Gates av
Bedford 1841...	Sub-Station No. 37.....	1720 Fulton
Hamilton 490...	Sub-Station No. 38.....	300 Clinton
East N.Y. 167...	Sub-Station No. 39.....	1710 Pitkin av
East N.Y. 284...	Sub-Station No. 40.....	Fulton & Crescent
East N.Y. 254...	Sub-Station No. 41.....	2890 Fulton
East N.Y. 15...	Sub-Station No. 42.....	582 Glenmore av
East N.Y. 381...	Sub-Station No. 43.....	435 Crescent
Bushwick 545...	Sub-Station No. 44.....	1101 Myrtle av
Wmsburg 1473...	Sub-Station No. 45.....	750 Myrtle av
Wmsburg 1440...	Sub-Station No. 46.....	79 Bway
Main 1761...	Sub-Station No. 47.....	231 DeKalb av
Wmsburg 1475...	Sub-Station No. 48.....	63 Morgan av
Greenpt 67...	Sub-Station No. 49.....	1091 Manhattan av
Bay Ridge 436...	Sub-Station No. 50.....	50 av & Tol at
Bay Ridge 908...	Sub-Station No. 51.....	222 1st Hamilton av
Flatbush 511...	Sub-Station No. 52.....	601 Flatbush av
Bath Beach 61...	Sub-Station No. 53.....	826 Flatbush & Bath Bch
Bath Beach 6...	Sub-Station No. 54.....	80th & 23d av Bensonhurst
Main 1592...	Sub-Station No. 55.....	174 South
Coney Island 79...	Sub-Station No. 56.....	Av. L. & Beachwood L.I.
Flatbush 625...	Sub-Station No. 57.....	133 Flatbush av
Flatbush 194...	Sub-Station No. 58.....	143 Flatbush av

Bay Ridge 129...	Sub-Station No. 59.....	921 17th av
Hamilton 808...	Sub-Station No. 60.....	516 Court
Bedford 107...	Sub-Station No. 61.....	943 Barton
Main 2212...	Sub-Station No. 62.....	420 Fulton
Main 2224...	Sub-Station No. 63.....	Fulton & DeKalb av
Sheepshead 44...	Sub-Station No. 64.....	1st St. Bay L.I.
South 54...	Sub-Station No. 65.....	11th Bay av
East N.Y. 273...	Sub-Station No. 66.....	10th Bway av
Wmsburg 1340...	Sub-Station No. 67.....	10th Bway av
Bay Ridge 144...	Sub-Station No. 68.....	1185 Fifth av
South 247...	Sub-Station No. 69.....	12th South av
Flatbush 189...	Sub-Station No. 70.....	12th South av
Flatbush 16...	Sub-Station No. 71.....	12th South av
Bedford 1676...	Sub-Station No. 72.....	12th South av
Bedford 1640...	Sub-Station No. 73.....	12th South av
Bedford 1710...	Sub-Station No. 74.....	12th South av
Bushwick 712...	Sub-Station No. 75.....	12th South av
Bay Ridge 440...	Sub-Station No. 76.....	12th South av
Bushwick 1703...	Sub-Station No. 77.....	12th South av
Bushwick 502...	Sub-Station No. 78.....	12th South av
Greenpt 267...	Sub-Station No. 79.....	12th South av
Wmsburg 1691...	Sub-Station No. 80.....	12th South av
Prospect 1699...	Sub-Station No. 81.....	12th South av
Greenpt 711...	Sub-Station No. 82.....	12th South av
Bay Ridge 807...	Sub-Station No. 83.....	12th South av
South 130...	Sub-Station No. 84.....	12th South av
Bay Ridge 872...	Sub-Station No. 85.....	12th South av
Prospect 3241...	Sub-Station No. 86.....	12th South av
Prospect 1728...	Sub-Station No. 87.....	12th South av
Wmsburg 2372...	Sub-Station No. 88.....	12th South av
South 241...	Sub-Station No. 89.....	12th South av
Flatbush 1305...	Sub-Station No. 90.....	12th South av
Prospect 3048...	Sub-Station No. 91.....	12th South av
Bedford 1079...	Sub-Station No. 92.....	12th South av
Bushwick 531...	Sub-Station No. 93.....	12th South av
Bay Ridge 820...	Sub-Station No. 94.....	12th South av
Bushwick 541...	Sub-Station No. 95.....	12th South av
Main 4238...	Sub-Station No. 96.....	12th South av
Flatbush 541...	Sub-Station No. 97.....	12th South av
Bay Ridge 318...	Sub-Station No. 98.....	12th South av
Wmsburg 1350...	Sub-Station No. 99.....	12th South av
Bedford 1534...	Sub-Station No. 100.....	12th South av
Bedford 106...	Sub-Station No. 101.....	12th South av
Prospect 1624...	Sub-Station No. 102.....	12th South av
Prospect 1774...	Sub-Station No. 103.....	12th South av
Bushwick 582...	Sub-Station No. 104.....	12th South av
Wmsburg 1273...	Sub-Station No. 105.....	12th South av
Hamilton 285...	Sub-Station No. 106.....	12th South av
South 304...	Sub-Station No. 107.....	12th South av
East N.Y. 250...	Sub-Station No. 108.....	12th South av
	Sub-Station No. 109.....	12th South av
	Sub-Station No. 110.....	12th South av
	Sub-Station No. 111.....	12th South av
	Sub-Station No. 112.....	12th South av
	Sub-Station No. 113.....	12th South av
	Sub-Station No. 114.....	12th South av
	Sub-Station No. 115.....	12th South av

BROOKLYN POST OFFICES SUBSTATIONS IN MARCH 1910

Sub-Station 1	938 Gates av.	115	Brooklyn
Sub-Station 2	18 Gates av.	212	Brooklyn
Sub-Station 3	528 Fulton	222	Brooklyn
Sub-Station 4	584 Myrtle av.	277	Brooklyn
Sub-Station 5	40 Union	228	Brooklyn
Sub-Station 6	220 Van Brunt	228	Brooklyn
Sub-Station 7	219 Myrtle av.	1899	Main
Sub-Station 8	109 Gates av.	1432	Brooklyn
Sub-Station 9	41 Flatbush av.	1848	Main
Sub-Station 10	97 Nassau	1752	Main
Sub-Station 11	151 Madison	1752	Brooklyn
Sub-Station 12	359 Myrtle av.	1752	Brooklyn
Sub-Station 13	Washington St.	1752	Brooklyn
Sub-Station 14	220 Madison	1182	Brooklyn
Sub-Station 15	220 Grand	452	Brooklyn
Sub-Station 16	220 Madison av.	1422	Brooklyn
Sub-Station 17	122 Bedford	2112	Brooklyn
Sub-Station 18	144 Broadway	1822	Brooklyn
Sub-Station 19	742 Washington av.	1822	Brooklyn
Sub-Station 20	787 Duane	1822	Brooklyn
Sub-Station 21	2020 Fulton	182	Brooklyn
Sub-Station 22	1078 Bedford av.	1222	Brooklyn
Sub-Station 23	261 Dean	1727	Brooklyn
Sub-Station 24	1541 Bway	222	Brooklyn
Sub-Station 25	221 Bway	222	Brooklyn
Sub-Station 26	1275 Myrtle av.	1227	Brooklyn
Sub-Station 27	1275 Myrtle	222	Brooklyn
Sub-Station 28	514 5th av.	122	Brooklyn
Sub-Station 29	529 Greenwood av.	504	Brooklyn
Sub-Station 30	222 5th av.	127	Brooklyn
Sub-Station 31	222 5th av.	127	Brooklyn
Sub-Station 32	222 5th av.	127	Brooklyn
Sub-Station 33	222 5th av.	127	Brooklyn
Sub-Station 34	222 5th av.	127	Brooklyn
Sub-Station 35	222 5th av.	127	Brooklyn
Sub-Station 36	222 5th av.	127	Brooklyn
Sub-Station 37	222 5th av.	127	Brooklyn
Sub-Station 38	222 5th av.	127	Brooklyn
Sub-Station 39	222 5th av.	127	Brooklyn
Sub-Station 40	222 5th av.	127	Brooklyn
Sub-Station 41	222 5th av.	127	Brooklyn
Sub-Station 42	222 5th av.	127	Brooklyn
Sub-Station 43	222 5th av.	127	Brooklyn
Sub-Station 44	222 5th av.	127	Brooklyn
Sub-Station 45	222 5th av.	127	Brooklyn
Sub-Station 46	222 5th av.	127	Brooklyn
Sub-Station 47	222 5th av.	127	Brooklyn
Sub-Station 48	222 5th av.	127	Brooklyn
Sub-Station 49	222 5th av.	127	Brooklyn
Sub-Station 50	222 5th av.	127	Brooklyn
Sub-Station 51	222 5th av.	127	Brooklyn
Sub-Station 52	222 5th av.	127	Brooklyn
Sub-Station 53	222 5th av.	127	Brooklyn
Sub-Station 54	222 5th av.	127	Brooklyn
Sub-Station 55	222 5th av.	127	Brooklyn
Sub-Station 56	222 5th av.	127	Brooklyn
Sub-Station 57	222 5th av.	127	Brooklyn
Sub-Station 58	222 5th av.	127	Brooklyn
Sub-Station 59	222 5th av.	127	Brooklyn
Sub-Station 60	222 5th av.	127	Brooklyn
Sub-Station 61	222 5th av.	127	Brooklyn
Sub-Station 62	222 5th av.	127	Brooklyn
Sub-Station 63	222 5th av.	127	Brooklyn
Sub-Station 64	222 5th av.	127	Brooklyn
Sub-Station 65	222 5th av.	127	Brooklyn
Sub-Station 66	222 5th av.	127	Brooklyn
Sub-Station 67	222 5th av.	127	Brooklyn

Sub-Station 68	222 5th av.	127	Brooklyn
Sub-Station 69	222 5th av.	127	Brooklyn
Sub-Station 70	222 5th av.	127	Brooklyn
Sub-Station 71	222 5th av.	127	Brooklyn
Sub-Station 72	222 5th av.	127	Brooklyn
Sub-Station 73	222 5th av.	127	Brooklyn
Sub-Station 74	222 5th av.	127	Brooklyn
Sub-Station 75	222 5th av.	127	Brooklyn
Sub-Station 76	222 5th av.	127	Brooklyn
Sub-Station 77	222 5th av.	127	Brooklyn
Sub-Station 78	222 5th av.	127	Brooklyn
Sub-Station 79	222 5th av.	127	Brooklyn
Sub-Station 80	222 5th av.	127	Brooklyn
Sub-Station 81	222 5th av.	127	Brooklyn
Sub-Station 82	222 5th av.	127	Brooklyn
Sub-Station 83	222 5th av.	127	Brooklyn
Sub-Station 84	222 5th av.	127	Brooklyn
Sub-Station 85	222 5th av.	127	Brooklyn
Sub-Station 86	222 5th av.	127	Brooklyn
Sub-Station 87	222 5th av.	127	Brooklyn
Sub-Station 88	222 5th av.	127	Brooklyn
Sub-Station 89	222 5th av.	127	Brooklyn
Sub-Station 90	222 5th av.	127	Brooklyn
Sub-Station 91	222 5th av.	127	Brooklyn
Sub-Station 92	222 5th av.	127	Brooklyn
Sub-Station 93	222 5th av.	127	Brooklyn
Sub-Station 94	222 5th av.	127	Brooklyn
Sub-Station 95	222 5th av.	127	Brooklyn
Sub-Station 96	222 5th av.	127	Brooklyn
Sub-Station 97	222 5th av.	127	Brooklyn
Sub-Station 98	222 5th av.	127	Brooklyn
Sub-Station 99	222 5th av.	127	Brooklyn
Sub-Station 100	222 5th av.	127	Brooklyn
Sub-Station 101	222 5th av.	127	Brooklyn
Sub-Station 102	222 5th av.	127	Brooklyn
Sub-Station 103	222 5th av.	127	Brooklyn
Sub-Station 104	222 5th av.	127	Brooklyn
Sub-Station 105	222 5th av.	127	Brooklyn
Sub-Station 106	222 5th av.	127	Brooklyn
Sub-Station 107	222 5th av.	127	Brooklyn
Sub-Station 108	222 5th av.	127	Brooklyn
Sub-Station 109	222 5th av.	127	Brooklyn
Sub-Station 110	222 5th av.	127	Brooklyn
Sub-Station 111	222 5th av.	127	Brooklyn
Sub-Station 112	222 5th av.	127	Brooklyn
Sub-Station 113	222 5th av.	127	Brooklyn
Sub-Station 114	222 5th av.	127	Brooklyn
Sub-Station 115	222 5th av.	127	Brooklyn
Sub-Station 116	222 5th av.	127	Brooklyn
Sub-Station 117	222 5th av.	127	Brooklyn
Sub-Station 118	222 5th av.	127	Brooklyn
Sub-Station 119	222 5th av.	127	Brooklyn
Sub-Station 120	222 5th av.	127	Brooklyn
Sub-Station 121	222 5th av.	127	Brooklyn
Sub-Station 122	222 5th av.	127	Brooklyn
Sub-Station 123	222 5th av.	127	Brooklyn
Sub-Station 124	222 5th av.	127	Brooklyn
Sub-Station 125	222 5th av.	127	Brooklyn
Sub-Station 126	222 5th av.	127	Brooklyn
Sub-Station 127	222 5th av.	127	Brooklyn
Sub-Station 128	222 5th av.	127	Brooklyn
Sub-Station 129	222 5th av.	127	Brooklyn
Sub-Station 130	222 5th av.	127	Brooklyn
Sub-Station 131	222 5th av.	127	Brooklyn
Sub-Station 132	222 5th av.	127	Brooklyn
Sub-Station 133	222 5th av.	127	Brooklyn
Sub-Station 134	222 5th av.	127	Brooklyn
Sub-Station 135	222 5th av.	127	Brooklyn
Sub-Station 136	222 5th av.	127	Brooklyn
Sub-Station 137	222 5th av.	127	Brooklyn
Sub-Station 138	222 5th av.	127	Brooklyn
Sub-Station 139	222 5th av.	127	Brooklyn
Sub-Station 140	222 5th av.	127	Brooklyn
Sub-Station 141	222 5th av.	127	Brooklyn
Sub-Station 142	222 5th av.	127	Brooklyn
Sub-Station 143	222 5th av.	127	Brooklyn
Sub-Station 144	222 5th av.	127	Brooklyn
Sub-Station 145	222 5th av.	127	Brooklyn
Sub-Station 146	222 5th av.	127	Brooklyn
Sub-Station 147	222 5th av.	127	Brooklyn
Sub-Station 148	222 5th av.	127	Brooklyn
Sub-Station 149	222 5th av.	127	Brooklyn
Sub-Station 150	222 5th av.	127	Brooklyn

Of the Brooklyn stations, none of the numeric stations were apparently issued flag cancellation devices. In the Alphabet stations some seven used flag cancel devices according to the latest records while six of the name stations--other than the main office--had flag cancel devices.

Pioneer Flights of Garden City Estates, New York: 1911, by Robert Schoendorf. Limited soft cover printing of 300 copies containing 75 pages and including 75 illustrations. Available at \$20 postpaid from Al Zimmerman, 843 Van Nest Ave. Bronx, N.Y. 10462.

This is an original research study of the first official airmail service, which was inaugurated at Garden City Estates, Long Island September 23, 1911. Mr. Schoendorf has dug up a mass of contemporary documentation and philatelic ephemera as well as numerous flown covers to commemorate this historic occasion. In the process he has altered some previously accepted conclusions, solved some mysteries and created others by giving us a much fuller picture of what happened. It can be recommended as a basic source book for anyone interested in the origins of the U.S. airmail service.

The background is set by a discussion of some of the unofficial flights of 1909-10, some of which have philatelic connections. Schoendorf then moves into a detailed coverage of the nine-day international aviation tournament that gave us our first official airmail covers. For most collectors the most interesting events are those surrounding the first official flight.

The contemporary documents show the initial mail bag was put together by postal inspector M. H. Boyle who cancelled the covers and then gave the bag to Brooklyn carrier Clarey who handed it over to Earle Ovington. Ovington had been sworn in that day as the first U.S. airmail pilot. Mr. Ovington flew the bag, estimated at about 30 pounds, in his Queen Bleriot Monoplane #13 to Mineola where it was pitched over the side to the Mineola postmaster who had been awaiting it for several hours. This account documented by Schoendorf differs in a number of details from the 'official' accord subsequently published by the Postmaster General.

One of the remaining mysteries of great interest to postal historians is just how many pieces of mail were carried on the first flight. Schoendorf notes that generally indicated figures show 640 letters and 1,280 cards while one contemporary news account reports 15,000 pieces of mail (pg. 40-1). He feels the higher figure is more accurate. This reviewer opts for a middle figure. As Ovington commented the mail was over 15 pounds and the New York Times of 9/25/11 put it at 30, the 15,000 piece estimate seems high, for two flights on the 24th carried 6,165 cards, 781 letters and 55 pieces of printed matter in two bags weighting 14 and 16 pounds respectively. On the 26th two bags totaling 22 pounds carried 3,600 cards, 462 letters and 78 pieces of printed matter. Thus 4,200 pieces weighted 22 pounds and 7,000 pieces weighed 30 pounds so that 15,000 pieces would be over 60 pounds. However, as Schoendorf notes the official figure of 1,900 pieces is low. It would only weight 10 pounds.

Among the continuing mysteries are how many of the first flight items survived and where are they today? Were any pieces of printed matter carried as they were on subsequent days? Where are the 100 cards posted on the 27th by Mrs. Woodruff that did not get the normal cancel? Schoendorf also poses the mystery of the arrangements made with English pilots when they carried the U.S. mail.

Mr. Schoendorf hasn't answered all the questions regarding these first flights. However, he has moved us a considerable distance down the road toward a better understanding. This work is of particular interest to Long Island collectors who want to know about one of the more important philatelic events that took place on the Island.

Calvet M. Hahn