

---

**EMPIRE STATE  
POSTAL HISTORY  
SOCIETY**

---

# *BULLETIN*

---

Volume 32 Number 4

March 2000

---

## **President's Message**

As I write this in mid-February, I am looking forward to attending Cover Mania II in Latham, N.Y. February 19-20, as well as a regional meeting of the Society. John Nunes, one of our directors, is the "guiding light" behind Cover Mania and has graciously offered meeting space and promoted our meeting each time this event has been held. For this we owe him our thanks as well as bringing together one of the largest gatherings of postal history dealers in the Northeast.

To paraphrase John F. Kennedy: "Ask not what the *Society* can do for you, but what *you* can do for the Society." If you are wondering what *you* can do for the Society, think five words: **RECRUIT, WRITE, EXHIBIT, AUCTION, and ATTEND.**

**Recruit:** The society has no formal structure in place for membership recruitment or "p.r." in general. It is up to each individual member to publicize the Society and encourage prospective new members. A supply of membership brochures and application forms is available from our Secretary-Treasurer, John Lange. Giving a talk on New York postal history at your local stamp club affords an opportunity to recruit new members.

**Write:** The Society's two publications, *the Journal of New York Postal History* and the *Bulletin* always need articles. Articles of some length which represent in-depth research or organization of postal history material are appropriate for the *Journal*. Short New York postal history "samplers" as well as news articles are excellent for the *Bulletin*. The Society also encourages book length research and compilations of N.Y. postal history data for separate publication.

**Exhibit:** Exhibiting can be an adjunct to writing, or vice versa, but it is important in itself for promoting interesting in both the Society and collecting New York postal history. Mention of ESPHS exhibiting awards in show programs likewise promotes the Society.

**Auction:** Members are afforded an opportunity four times a year to sell, through auction, their excess postal history material to the other members of the Society; the auction manager is always in need of more material. This is primarily a member benefit but can be used as a recruiting tool as well. Members should seriously consider submitting lots to the auction manger.

**Attend:** Two general membership meetings are held each year: the annual meeting on the first Sunday in May and the fall meeting in conjunction with a local stamp show such as SYRAPEX, CINCOPEX or STEPEX. Occasional regional meetings are held, usually at a stamp show or bourse. Meetings are beneficial both to the members as well as officers of the Society by providing a forum for discussion of concerns regarding New York postal history collecting as well as Society business.

Thanks to those of you who have been recruiting new members, writing for Society publications, exhibiting New York postal history, contributing lots to our auction, and attending our meetings. *More of you are needed* - the field is not crowded, please come forward.

*Alan Parsons*

## SOCIETY NEWS

Contributions are always welcome for this feature; please send them to:

John Lange  
ESPHS Secretary/Treasurer  
373 Root Road  
Ballston Spa, NY 12020-3227

You may call John at (518) 882-6373. The best time is in the afternoon between 1 and 6.

### Applicants for membership:

LaCroix, Geoffrey J. 42 Herthum Rd,  
Whitesboro, NY 13492-2215  
Interests, Great Britain/US/NYS PH  
References: APS 174638, GB Collectors Club

### We welcome the following new members:

Heilman, Peter S. 480 Regina Lane, Belvidere,  
IL 61008-8526  
Interests: PH of Schen., Alb, and Rens. Co.

### Reinstated (dropped in error by Sec.)

Tony Crumbley, Jim Forte, Dennis Mallory

### Report of the Nominations Committee:

Secretary-Treasurer :	
---John Lange	2002
Board of Directors:	
---Drew Nicholson	2001
---Albert Guenzburger	2003
---Jack Haefeli	2003
---Maris Tirums	2003

Members may also nominate persons to the above positions by sending a nomination with 3 (three) signatures to the Secretary-Treasurer by March 20, 2000.

Respectfully Submitted,  
*Stephen Matte*

### ESPHS Bulletin

Published quarterly by the  
EMPIRE STATE POSTAL HISTORY  
SOCIETY  
APS AFFILIATE #28

Send general society business to:  
John Lange, Secretary/Treasurer  
373 Root Road  
Ballston Spa, NY 12020-3227

### Officers:

President: Alan Parsons  
Vice President: *Dr. Joseph Rowbottom*  
Secretary/Treasurer: *John Lange*

### Directors:

(98) *Kenneth de Lisle*  
(00) *Albert Guenzburger, Jack Haefeli,*  
*Maris Tirums*  
(01) *John Nunes, Stephen Matte*  
(02) *John Azarkevich, Louis Call,*  
*Gerald Wiley*

### Auction Manager:

*Bill Hart*

### Regional Representatives:

Western: *Ada Prill*  
Mohawk/Hudson: *Maris Tirums*  
Northern: *Stephen Matte*  
Central/Southern: *Alan Parsons*

### Publications:

Please send items for *ESPHS Bulletin* to:

Glenn A. Estus, editor  
PO Box 451,  
Westport, NY 12993-0451  
(518) 962-4558  
e-mail: [gestus@westelcom.com](mailto:gestus@westelcom.com)

### ESPHS homepage:

<<http://www.westelcom.com/users/gestus/esphs.html>>

### *The Journal of New York Postal History*

Martin Margulis, editor  
4159 Steck Ave. 113H  
Austin, TX 78759-8511

## 2000 ANNUAL MEETING

The Society's annual meeting for the year 2000 will be held Sunday, May 7, at Graziano's Casa Mia in Canastota, New York, located just off Thruway Exit 34. Vice President Joe Rowbottom has reserved a room from 9:30 a.m. to 3:00 p.m. Coffee and doughnuts will be provided in the morning, lunch may be ordered from the menu.

Directions to the restaurant from Exit 34: As you leave the tool booth you will come to a "T" at the end of the access road. Turn left onto North Peterborough St. and drive 100 feet. The restaurant is on the right next to the Mobil station.

## Regional Meeting At ROPEX, March 18

ROPEX 2000 will be held March 17-19 at the Diplomat Banquet Center, One Diplomat Way (1956 Lyell Avenue), Rochester, NY. The Banquet Center is located east of I-390 at Exit 21. ROPEX is the major upstate New York show each year, having the most exhibits, dealers and other activities.

At this writing, it is not known if there will be any New York postal history exhibits but even without them there will be good examples of postal history and other exhibit categories. A *regional meeting of the ESPHS is tentatively scheduled for Saturday a.m. (the show program will have the exact time)*. This will afford an opportunity for discussion, questions, and an update on Society activities. ROPEX is an excellent show; plan to attend, enjoy the show and meet with your fellow New York postal history collectors.

## TRADING POST

Each member is entitled to one free Trading Post ad of up to 25 words each year. The ads are always changing, so everyone is encouraged to keep their eyes open for new opportunities to sell/ trade/buy material.

**AUCTION AGENT** covering most U.S. and FOREIGN sales. Personal and knowledgeable service, competitive fees. Contact: Frank Mandel, Telephone (212) 675-0819, FAX (212) 366-6462 (1/1)

**I HAVE RETIRED!!** More time to devote to POSTCARD approvals. TRY ME! Buy - Sell. Contact: Edward Beiderbecke, PO Box 155, Williamson, NY 14598-0155 (email: <BIXcuz@aol.com>) (1/1)

**TRADE - My New York State RAILROAD** Depot postcards for your DEPOTS of Pennsylvania. Let me know what you have! Contact: Sidney Fingerhood, 2225 Bryn Mawr Ave., Ardmore, PA 19003 (1/1)

## ESPHS Website

Glenn Estus has created an ESPHS Website: <http://www.westelcom.com/users/gestus/esphs.html>

Currently, links to sites maintained by members David Williams, Doug Penwell, Glenn Estus, and KenHall are listed on the site. Broome, Clinton, and Essex County information is also listed.

Do you have a website dealing with New York Postal History or if you have a comment or suggestion about the website, please contact Glenn at <gestus@westelcom.com>.

## Community, N.Y

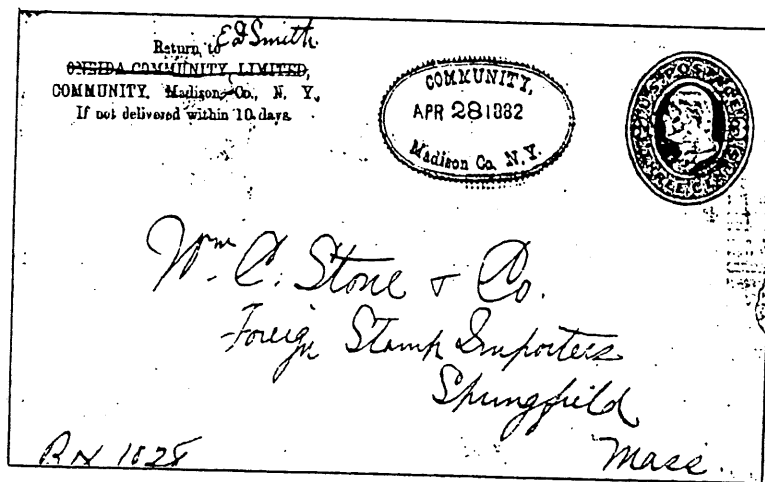
by Joe Rowbottom

(originally published by ESPHS in *Stamp Insider*)

This Oneida community was a communal utopian society founded in 1848 by John Humphrey Noyes, a visionary religious leader. Members settled on the banks of the Oneida Creek and built a large edifice called the Mansion House in which they all lived. The community manufactured numerous products including carpetbags, silk thread, animal traps, canned fruits and vegetables and in later years, silverware.

From 1848 until 1879, mail service was from the Oneida Post Office, located about 2 miles from their settlement. In 1879, they gained their own post office, located on the grounds and called Community, N.Y. The cover pictured below shows an oval datestamp used in that office. (ed. note, also shown: a circular county postmark courtesy of *Doane-Thompson Catalog of U.S. County and Postmaster Postmarks*, 1990)

In 1881 the Community was dissolved as a communal society and reformed as a joint-stock company. It took the Post Office Department awhile to catch on and it wasn't until 1889 that the name Community was changed to Kenwood, a name picked by the people living in the Mansion House and surrounding area. This post office remained Kenwood until 1922 when it became the Kenwood Station of the Oneida Post Office



## **E.S.P.H.S. SALE No.102 - CLOSING DATE: April 8, 2000**

Sale 102 marks the beginning of the revised auction format outlined in the last *Bulletin*. The bidding rules are repeated so they may be understood by all.

We are off to a slow start with the new format as I have received material from only four members. In addition there is some material of my own and an outside source. If future response is no better, it is inevitable that there will be issues of the *Bulletin* with no auction. Member input to the situation would be invaluable.

*Bill Hart*

---

### **Bidders' Rules**

The auction is presented in two parts - the first having scarcer or better material and the latter with more common material.

***Part 1: All of the better material will be identified with minimum bids established by the owner. The minimums start at \$10. These lots will have detailed descriptions***

***Part 2: All of the more common material will have a one line description and require a starting bid of \$2. This group will have no lot reserves but some lots may be given estimated values.***

Sale will be at one increment over second highest bid. Tie bids go to the earliest bidder by mail or phone. The latter must be confirmed by mail. Bidding increments are \$.50 up to \$10, \$1 from \$10 to \$40, \$2.50 from \$40 to \$100 and \$5 over \$100.

Payment is expected to be sent within 5 days after receipt of lots, should be made out to E.S.P.H.S. and sent to Box 167, Shrub Oak, NY 10588.

Photocopies will be sent at \$.10 per lot and an SASE. No copies of lots with more than three items. Incorrectly described material may be returned within 5 days. This is exclusive of condition, which will be described to the best of the auctioneer's ability. Relatively little postal history is pristine. No returns on lots containing more than 3 items.

Those persons wishing to be consignors should request consignor guidelines before sending material or refer to the December 1999 *Bulletin*.

---

# ABBREVIATIONS ....

for the auction lot descriptions. In some usages both upper and lower case are interchangeable. Please save for future auctions.

F	fine -well struck pmk	lg	large
VG	very good -cancel may have several light letters	let	letter
G	good - pmk light or with some letters missing	lt	light
ADV	advertising	mag	magenta
ave	average	max	maximum
bk	black	MC	machine cancel
BN	Bank Note Issue	mm	millimeter
brt	bright	min	minimum
BS	back stamped or backstamp	M/D/Y	month, day, year
ca	circa	msc	manuscript
canc	cancel or cancellation	N.O.R.	no outer rim
cat	catalog	NYD	no year date
cc	corner card/return address	o/c	off center
CDS	circular town & date stamp	ODS	oval date stamp
comm	commercial	o.r	orange red
Co.	county	org	orange
cov	cover, no contents	o/w	otherwise
cts	contents or contains	p/c	private picture post card
CV	catalog value-Scott or UPSS	PH	postal history
DCDS	double circle town & date stamp	PM	postmaster
def	defective	PO	post office
DLCDS CDS	with double outer line	pol	political
doc	document	pmk	postmark
dok'd	docketed	PSE	postal stationery envelope
DPO	discontinued post office	reg	registered or registry
encl	enclosure	RFD	rural free delivery
env	envelope, usually no cts	rt	right
ESV	estimated value, not minimum	se	straight edge
FDC	first day cover	sev	several
ff(s)	file fold(s)	S/L	straight-line cancel
fls	folded letter sheet with cont- ents unless otherwise describe	sl	slight
frk	franked	sm	small
GBC	George Bernadt's NYS catalog	s-o-n	socked on the nose
gpc	government postal card	stls	stampless
hol	hollow	tmk	townmark
HS	hand stamped marking	ty	type
illus	illustrated or illustration	v	very
Inter	International	var	variety
#	catalog number	w	with
		w/o	without
		yel	yellow

**PART 1 (see bidders rules on page 5)**

- 001 Bk DODS TROY/NY/Sept. & msc 4(1816) on clean fls w msc 10. Canc inner rim is dotted line and left edge & N is missing. Cts v personal let. Min \$20.
- 002 Clear org ODS(dotted rim) TROY/NY/MD(1830) on v clean fls w msc 18 3/4 to St. Albans, Vt. Lower rt quarter of rim is missing. Cts of business finances. Min \$25.
- 003 O/r 34 1/2mm DCDS CHERRY VALLEY/msc MD/N.Y.(1831), OTS Co., and o/r PAID on clean fls w msc Paid 12. Double rate for encl of bank draft. Sev weak let in canc. Min \$15.
- 004 Msc canc BURLINGTON NY/Nov 9th(1833) on fls w msc Paid 12. Double rate for encl of transfer note. Min \$10.
- 005 Msc canc ESSEX September 4. 1834 on fls w ff and msc 25 to Ashtabula, Ohio. Cts of financial review of funds paid and owed. Min \$15.
- 006 Msc canc LUDLOWVILLE NY/March 4(1834), TOM Co., on clean fls w ff faults & msc Paid 10. Cts record of legal stipulation. Min \$10.
- 007 Complete o/r DODS PALYMRA/MD/NEW YORK(1834 - w several blurry let), WAY Co. on clean fls w two lt ff and ms 18 3/4. Message is a report from Wayne County Bank of August business to Comptroller. There are internal ff. Min \$15.
- 008 Bk 31X24mm DODS LOWVILLE/msMD/N.Y.(1836), LEW Co., on fls w ms 18 3/4 to Cavendish, Vt w lengthy, ungrammatical personal letter. Min \$35.
- 009 Blue sl blurred 30x23mm ODS BUFFALO(1839) on sl soiled fls w red msc 20 to Snow Hill, Md. Exceptionall let of brother to sister detailing a trip from Phiadelphia to Niagara Falls by way of New York, Troy and across New York State. Min \$20.
- 010 Msc canc PLAINVILLE N.Y./Sept.15 1843, ONO Co., on aged fls w internal ff faults and msc Paid 6. Cts of petition for bail. Min \$10
- 011 Msc canc AUSABLE FORKS N.Y./Nov 7(1844) w msc 25 on fls w minor stains and ff on family let to Aztalan, Wisc Terr. Min \$25.
- 012 Org 31mm CDS RONDOUT/M/D/N.Y.(1845). ULS Co., G w NY partial, on clean fls w minor ff & ms 5. Cts of 3+pg let of brothers on family matters and investments. Let dated Jul 3, third day of new rate. Min \$15.
- 013 Msc canc JAY NY/March 20(1846), ESS Co., on soiled fls w msc 10 on long 2+ pg family let to Lake Mills, Wisc. Terr. Min \$20.
- 014 29 1/2mm CDS ALBION/M/D/N.Y.(1846), ORL Co. on clean fls w ffs and PAID & V. Canc shade is mixture of org and bk. Interesting bank business let about transfer of funds and request for equal amount of \$5 notes "printed on good strong paper". Min \$10.
- 015 Msc canc EVANS/Nov/21(1847), ERI Co., DPO 1901, on soiled fls w faults w msc 10 to Ohio. Comm let detailing funds owed by and to different parties. Min \$15.

- 016 Msc canc LINDEN GEN NY/June 5(1847), GEN Co., on sl soiled fls w msc blue Paid 5 w lengthy family let. Min \$15.
- 017 Msc canc LINDEN N.Y./Nov 24(1849), GEN Co., on sl stained manila env w Paid 5. Cts family let similiar to 0xx. Min \$10.
- 018 Turned cover - lt org 33mm CDS CHATEAUGY & PAID w msc Paid 5 on v clean fls to Richard Keese, Secr. of Clinton & Essex M.I.Co. Return w clear blue 30mm CDS KEESEVILLE & V(1849) w lt ff in 3 days w insurance business cts. Min \$20.
- 019 Msc canc WASHINGTON/Jan 3(dok't 1850), DUT Co.(DPO 1891), w msc 5 on aged manila env w/o cts. Min \$12.
- 020 Dark o/r 34mm CDS HERKIMER/M/D/N.Y.(1851), VG, on clean fls w HS o/r 5. Cts of printed Notary Public form identifying a protested draft. Min \$10.
- 021 Strong o/r 32mm CDS MATTEAWAN/M/D/N.Y.(1851 - first A missing), DUT Co., w o/r 5 on clean fls w ff w/o cts. Min \$10.
- 022 Msc canc McGRAWVILLE/N.Y. Oct 22(NYD), COR Co., on soiled fls w msc 5 & internal ff faults. Personal let. Early msc date. Min \$10.
- 023 Msc canc WASHINGTON HOLLOW/MAY 13th(NYD), DUT Co.(DPO 1903) on soiled dark buff env w msc canc Sc.11. Cts a Quaker family let w dateline of Locust Grove 5th mo 11th. Stamp is sound. Min \$12.
- 024 Msc canc GUILFORD NY/Jun 27(dok't 1853), CHN Co., on manila env w some edge faults & msc Paid 3. Personal let cts. Min \$10.
- 025 Sharp bk 32mm CDS SYRACUSE/JUL/29/1857/N.Y. cancelling a 4-margin copy of brownish carmine Sc.11 on clean dk org env. Min \$10.
- 026 Msc canc FORT MILLER/Sept. 28/1861, WAS Co., in fine script written partly on Sc.26a on a somewhat wrinkled env. Later than Penwell. Min \$20.
- 027 Msc canc STONE CHURCH/Dec 14(1864), GEN Co.(DPO 1895), on Sc.65 on soiled env rough rt just into stamp. 4 pg family let datelined Leroy w one reference to war. Min \$10.
- 028 Bk 31mm CDS WHEATVILLE(1865), GEN Co.(DPO 1903), on env w minor stains and rough rt just into stamp w Sc.65 w grid killer. Family let cts. Min \$10.
- 029 Msc canc Oct 9 65/MIL(L)S MILLS, ALL Co.(DPO 1903), aged env w msc canc on Sc.65 w/o cts. Min \$18.
- 030 Msc canc N.BROADALBIN NY/MAY 20(NYD), FUL Co.(DPO 1904), on sm env w minor stains w msc canc on Sc.65. Min \$10.
- 031 Bk 30mm CDS DARIEN CENTRE(dok't 1868), GEN Co.(DPO 1893) on sl aged oriental buff env w cork canc on Sc.94. Min \$10.



- 032 Msc canc GRIFFINS MILLS N.Y./Nov 3(dok't '68), ERI Co.(DPO 1903), on yel env w msc canc on Sc.94. Cts concerns tracking of goods going by boat thru Buffalo. Later canc than reported. Min \$20.
- 033 Msc canc PINE LAKE NY/Sept 23(NYD), FUL Co.(DPO 1868-95), on soiled buff env w msc canc Sc.94. Canc not listed by Chlanda & Wilcox. Grilled stamp suggests this was used in first year of office. Min \$30.
- 034 Bk 23mm CDS AMENIA(NYD), DUT Co., on v clean env w split cork canc on v good copy of Sc.114. Canc is sl blurred. Min \$10.
- 035 Lt but complete bk CDS ANDRUSVILLE(DOK'T 1870), FRA Co.(DPO 1852-72), on PSE U58 w lt target killer. Lower left corner damaged. Min \$15.
- 036 VG ultramarine 30mm DCDS HORNELLSVILLE, STU Co., duplex w solid star killer canc Sc.147 on clean env sl reduced top and rt w personal let. Min \$12.
- 037 Incomplete purple CDS NORTH ELBA, ESS Co.(DPO 1930), on clean env w ave Sc.179 tied w purple killer to London. Lt stain down center & front has strong org London receiving canc of Aug 6 81. Min \$12.
- 038 County canc - mag 28mm DLCDS GENESEO/MD1881/LIV.Co. N.Y., VG, as transit mark on fine UX5 sent from GREIGSVILLE w G 24mm CDS & partial target killer. Min \$10.
- 039 County canc - bk duplex w weak target w 25mm CDS AURORA/M/D/1885/ CAYUGA Co.,N.Y., VG, on UX7. Min \$10.
- 040 Msc canc BURNS NY/JULY 21(dok't 1885), STU Co.from 1883 to 1899(ALL Co. before & after) on yel env w many edge faults & msc canc on Sc.210. Min \$15.
- 041 Two reg letters. One w CDS NORTH ROSE(some missing let), 1887, WAY Co. w Sc.210 on edge stained env. Other w CDS ITALY HILL, 1889, YAT Co.(DPO 1902), w Sc.213 on minor stain env. Both franked w Sc.209, one may be #209b. Min \$10.
- 042 County canc - VG 34mm DCDS MOSCOW/MD1888/Livingston Co. N.Y. w scarab killer on UX9. Min \$10.
- 043 County canc - G, bk 28mm DCDS IRONDALE/1890/DUTCHESS CO. N.(Y missing)(DPO 1873-93), as duplex w grid killer on Sc.213 on env w edge stains. Min \$20.
- o44 Bk duplex of KEESEVILLE/1891, ESS Co. on clean UX9 w closed spindle hole. Killer is a large "K" in 18mm circle. Min \$12.
- 045 Weak 28mm SHAVERTOWN, DEL Co. CDS, 1894(DPO 1954-1890 pop. 43) on soiled env, rough rt w partial target on Sc.220. Reverse has PM canc as target duplex - L.L.HALL,P.M./East Branch, N.Y. Min \$10.
- 046 Clear CDS PORTER, 1898, WAS Co. on env w target canc on Sc.279Bg(pink tyIV). Office only operated from 1897 to 1905. Min \$18.

- 047 Blurred CDS KIAMESHA, DEC 1899, SUL Co.(first year of office), on PSE Sc.U250 w Sc.279 for 5 cent rate to Germany. Min \$10.
- 048 F RFD HS Ty1/6 from PENN YAN, YAT Co. on UX14. Below HS is complete v early Barry MC w full year date, 1902, from ITHACA. Min \$12.
- 049 Two fine RFD canc from FORESTVILLE, CHA Co., Route 5 on p/cs. Purple 1907 Ty2FA and bk 1912 Ty1SA. Min \$15.
- 050 V complete RFD HS WEST HENRIETTA, MNR Co. Ty2F/1 1908 on clean p/c. Min \$12.

## Part 2 (see bidders rules on page 5)

- 201 ADDISON, 1901, complete Perfection MC on v clean env w Sc.279B. ESV \$6.
- 202 ALTAMONT, RFD Ty11F/? on Sc.405 on p/c, F.
- 203 ALTMAR, 1905, RFD Ty2F/3 on p/c w Sc.300, F. ESV \$8.
- 204 ANGELICA, 1850, bk CDS, G, sl soiled fls w HS 5, personal cts.
- 205 ANGELICA, 1878, mag DCDS duplex w target killer, F, on v clean UX5. ESV \$5.
- 206 ANTWERP, 1907, RFD Ty1/4 on p/c w Sc.300, G.
- 207 BLISS, 1906, RFD Ty1/1 on p/c w Sc.300, VG. ESV \$5.
- 208 BRIGHTON, 1903, DPO 1905, RFD Ty2F/6 on env w Sc.301, VG. ESV \$5.
- 209 BUFFALO, 1847, blue DODS, F, sl soiled fls w minor ff w ms 10, bank business cts.
- 210 BUFFALO, 1848, blue CDS w 5 rate, VG, clean fls w corn. mount stains, dunning let.
- 211 BUFFALO, 1865, bk patent cancel duplex, F, strong imprint on poor Sc.65, yel env. ESV \$8.
- 212 CAMBRIDGE, 1843, o/r CDS, VG, clean fls w inkstains w ms 18 3/4, 3+ pg v fine let.
- 213 CANAJOHARIE, NYD, blue CDS & PAID, VG, clean lt blue env w ms Paid & 5, no cts.
- 214 CANANDAIGUA, 1851, o/r CDS & HS 5, G, fls soiled rt & ff faults, lengthy legal let.
- 215 CATSKILL, 1843, blue CDS w partial rim, VG, v clean fls w ms red 20, no cts.
- 216 CAZENOVIA, 1843, org CDS, F, clean fls w ff w ms Paid 12 1/2 and org PAID w/o cts.
- 217 CHITTENNANGO, 1846, bk CDS, G, v clean fls w minor ff w bk HS 5, bank business cts.
- 218 CINCINNATUS, ca 1906, RFD Ty11F/2 on p/c w Sc.300. F. ESV \$4.
- 219 CLINTON, 1840, red CDS, VG, clean fls w ms 18 3/4, 3 pg personal let.
- 220 CLINTON CORNERS, 1884, mag DLCDS & star duplex, weak killer on Sc.210 on env. ESV \$8.
- 221 CONSTABLEVILLE, NYD. blue CDS & PAID 3 in circle, F, soiled buff env, no cts.
- 222 COPENHAGEN, 1852, blue CDS & PAID 3, manila env w edge faults, no cts.
- 223 DARIEN CENTER, 1907, RFD Ty1A/? on UX18. G.
- 224 DARIEN CENTER, 1916, RFD Ty11E/14 on p/c w 1 cent perf 10. VG.
- 225 EAST CONCORD, 1909, RFD Ty1N/1 in brown ink on p/c w Sc.331. G.
- 226 FORESTVILLE, 1911, RFD Ty 1FA/6 on p/c w 1 cent perf 12. F. ESV \$8
- 227 FORT COVINGTON, 1845, org CDS & HS PAID & 5, G, clean fls, 3+ pg let of two writers.
- 228 FORT PLAIN, 1841, red CDS, VG, clean fls w ms 6, loan related cts.
- 229 FRANKFORT, 1842, org CDS, G, v clean fls w ms 12 1/2, v timely readable cts.
- 230 GAGE, 1906. DPO'54, violet RFD Ty1AAA/1 on p/c w Sc.300, G.
- 231 GLOVERSVILLE, NYD, org DCDS, VG, sl soiled fls w ms 5, no cts.
- 232 HAMILTON, 1836, red CDS, F, clean fls w ms 18 3/4, 3 pg personal let. ESV \$5.
- 233 HIGHLAND, 1905, RFD Ty1/3 on clean p/c w Sc.300, VG. ESV \$6.
- 234 HILLSDALE, c1909, RFD Ty11/3 on p/c w 1 cent perf 12, VG. ESV \$4.

- 235 HOLLEY, 1906, strong RFD Ty2F/? on clean p/c w SC.300, F. ESV \$8.
- 236 HOMER, 1845, o/r CDS, VG, on clean fls w msc 5, comm cts.
- 237 JORDAN, 1838, weak but complete CDS, clean fls w ff, ms Paid 6, no cts.
- 238 LIMERICK, 1908, RFD Ty1/1 on p/c w Sc.300, G.
- 239 LISBON, NYD, RFD Ty11F/1 on p/c w 1 cent perf 12, VG.
- 240 LITHGOW, NYD, CDS, VG, DPO'03 on env w tears top w Sc.114 tied by target. E\$8.
- 241 LYONS, NYD, RFD Ty11F/5 on clean p/c w 1 cent perf 12, F. ESV \$4.
- 242 MADRID SPRINGS, DPO'20, 1916 RFD Ty2F/1 on clean env w Sc.425, VG. ESV \$8
- 243 MCGRAWVILLE, PM canc, G.A.JONES, 1882, DLCDS w target duplex on soiled drop let, G. ESV \$4.
- 244 MOIRA, FRANKLIN Co. canc, 1882, partial DCDS & maltese cross killer on clean env w Sc.207. E\$8.
- 245 MOIRA, FRANKLIN Co. 1882 DCDS duplex w Maltese cross killer on v clean UX7, some lt let. E\$8
- 246 NEWFIELD, 1906, RFD Ty1S/28, on p/c w Sc.300, VG. ESV \$7.
- 247 ORLEANS FOUR CORNERS, DPO'16, 1907, RFD Ty2F/1 on aged env, rough rt, w Sc.319, G.
- 248 PRATTSBURG, c1908, RFD Ty11F/3 on p/c w Sc.300, F.
- 249 RANSOMVILLE, 1905, RFD T1/24 on PSE#395 w creases. Env has printed cc for route, G. ESV \$6
- 250 ROME, 1845, brt red CDS, VG, clean fls w sl faults w ms 5, business let
- 251 SOUTH DAYTON, 1904, RFD Ty2B/? on sl soiled env w Sc.319 & comm cc, VG.
- 252 SYRACUSE, NYD, RFD Ty11F/5 on p/c w 1 cent perf 12, VG. ESV \$4.
- 253 TROUPSBURG, NYD, RFD Ty11F/2 on p/c w 1 cent perf 12, VG.
- 254 TROY, 1846, blue CDS w PAID & V in double cir on fls w 2 ff & msc Paid. Legal cts. ESV \$8.
- 255 VERNON CENTER, 1908, RFD Ty1A/1 on p/c w Sc.300, G.
- 256 Strong WASSAIC CDS on Sc.65 w no killer on soiled env.
- 257 WEST FALLS, 1909, RFD Ty1X/1 on p/c w Sc.331, G.
- 258 WINFIELD JUNCTION, 1886, sm CDS, F, on sound UX8. ESV \$5.

### MANUSCRIPT DATA STILL NEEDED!

Just because the Master Supplement has been published doesn't mean that there is no more work to be done. Please look over your copy (*what do you mean, you haven't ordered one yet?*) and send new towns, dates, or corrections to the editor. If you have suggestions about format, they will be considered for the next edition. WE URGENTLY NEED DATA ABOUT MULTI-COUNTY OFFICES! Your contribution is appreciated.

SEND DATA TO:

DOUGLAS PENWELL  
P.O. BOX 3525  
GLENDALE, AZ 85311-3525  
(623) 931-5741

e-mail: <dougpenwell@mail.com>

## YOUR HELP IS NEEDED

Charles Sweeting is preparing an Oswego County postal history book. He needs good photocopies of covers or cancels from these Oswego County post offices:

Bowen's Corners	1849-1906	Maple View	1907-to date
Boylston	1852-1867	Molino	1853-1887
Boylson Centre	1864-1903	Morse	1891-1894
Brook	1894-1904	Mount Pleasant	1871-1903
Butterfly	1828-1904	New Centreville	1852-1914
Cartersville	1850-1865	North Boylston	1891-1903
Catfish	1877-1903	North Constantia	1878-1903
Caughdenoy	1850-1919	North Hannibal	1867-1907
Central Square	1822-to date	Oswego Center	1867-1916
Checkered House	7/1850-12/1850	Pennellville	1851-to date
Constantia Center	1849-1902	Pine Ridge	1837-1840
Demster	1883-1942	Port Ontario	1837-1902
Dexterville	1875-1905	Prattham	1887-1902
Dugway	1850-1903	Ricard	1886-1904
East Boylston	1859-1882	Roosevelt	1831-1851
East Palermo	1862-1908	Sala	1893-1904
East Parish	1851-1854	Salmon River	1839-1903
Fairdale	1858-1905	Seneca Hill	1855-1859
Four Corners	1817-1821	Six Mile Creek	1836-1843
Fraicheur	1892-1902	Smartville	1893-1903
Fruit Valley	1879-1905	South Albion	1845-1902
Gilberts Mills	1847-1904	South Granby	1849-1920
Granby	1822-1841	South Hannibal	1855-1906
Granby Center	1851-1906	South New Haven	1877-1904
Greenborough	1843-1908	South Scriba	1869-1906
Hannibal Center	1849-1906	Spruce	1837-1844
Hastings Centre	1851-1908	Spruce	5/1891-6/1891
Hinmansville	1843-1908	Texas	1839-1905
Hull's Corners	1836-1855	Union Bridge	4/1826-5/1826
Ingall's Crossing	1870-1903	Union Bridge Settlement	1844-1864
Jerry	1885-1904	Volney	1825-1908
Kinney's Four Corners	1826-1904	Walker	1898-1899
Lansing	1871-1906	West Amboy	1847-1938
Learned's	1826-1833	West Granby	1821-1833
Lindsaysville	1838-1943	West Mexico	1813-1819
Little France	1876-1904	West Monroe	1833-to date
Loomis Corners	1821-1822	West Williamstown	1843-1848
Maple Hill	1864-1874	Wrightson	1866-1904

Contact Charles at:

Charles Sweeting  
63 Ridgeway Sites  
Oswego, NY 13125

email: <RAMPAGE25@yahoo.com>

## Adirondack Hotel Post Offices

by Gerald Wiley

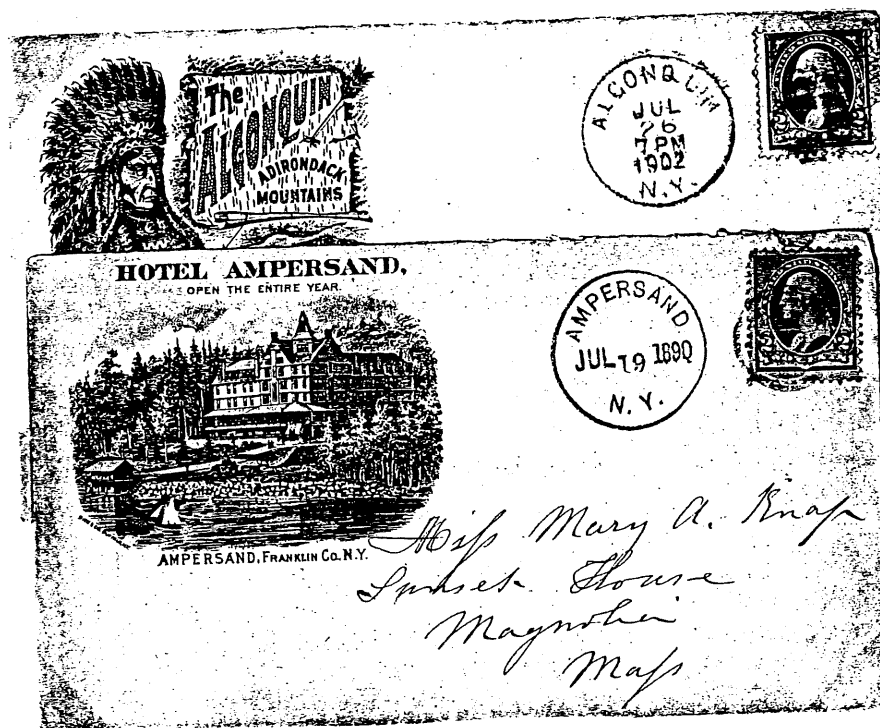
(originally published by the ESPHS in *Stamp Insider*)

The influx of visitors to the Adirondacks Mountains in the second half of the 19<sup>th</sup> century led to the construction of many hotels, some of them quite luxurious. Among those having their own post offices were the Ampersand and the Algonquin, both located on Lower Saranac Lake in Franklin County.

John Harding became the first postmaster of Ampersand when that office opened in 1889. When he purchased the Algonquin Hotel he became the first postmaster at that location in 1891. An early advertising brochure for the Ampersand Hotel called attention, among other amenities, to a telegraph and post office located in the basement. Advertisements for the Algonquin also stated "telegraph and post offices in the hotel".

The Ampersand post office was officially terminated in 1908 following the destruction of the hotel by arsonists in September, 1907.

The Algonquin post office was closed in 1914 and reopened in 1920. It was discontinued permanently in 1922. The hotel was torn down in 1958-59. Shown below are covers from the Algonquin and Ampersand post offices.



## ESPHS PUBLICATIONS FOR SALE

The following publications were printed by your Society and are currently available. Members are entitled to a 20% discount from the list price. With the exception of *FEDERAL POST OFFICES OF NYS* which is postpaid, there is a P/H charge if ordered through the mail. Please add it to the book cost. If you order a number of books at one time, the maximum postage and handling charge is \$3.00. Order from ESPHS, 373 Root Road, Ballston Spa, NY 12020-3227

Volume discounts of 30% for 5-9 of one title and 40% for 10 or more of one title are available to ESPHS members as well as dealers.

Our *FEDERAL POST OFFICES OF NYS* booklet in the 5.5" x 8.5" format is available at the original cost of \$5.00 list, postpaid (Member's price, \$4.00 pp). This booklet (which is alphabetical) covers the time period of 1792-1972; it gives the county where a PO is located and is a valuable adjunct to George Bernadt's Postal Markings catalog listed below. It has blue card cover stock on the outside and fits nicely into the cover pockets of the binder of the catalog, or can be used separately if so desired.

*POSTAL MARKINGS OF NYS 1792-1856* by George Bernadt. A priced catalog of NYS stampless cover markings published in 1993. 382 pages. Available in two formats (the spiral-bound version is sold out).

- 1). Three-ring 1.5" binder; clear plastic overlays on the front, spine and back with title inserted plus two interior pockets. Includes pages; a free home for the book plus room for future additions and your own notations, List price \$29.00, member's price, \$24.00. P&H \$3.00
- 2) Pages only, shrink-wrapped. List price, \$25.00, member's price \$20.00. P&H \$3.00

*STAR CANCELS OF NEW YORK STATE* by David Proulx. 32 pages, illustrated, staple bound, card cover. List Price \$9.00. Member's price \$7.20. P&H \$1.00

*COUNTY AND POSTMASTER CANCELS OF NEW YORK STATE* by David Proulx. 44 pages, illustrated, staple bound, card cover. List price \$9.00. Member's price \$7.20. P&H \$1.00

*ONTARIO COUNTY POSTAL HISTORY* by Emma Koberg. 85 pages, maps, postmarks & illustrations. Plastic bound. Reprint. List price \$10.00. Member's price \$8.00. P&H \$1.00

*WAYNE COUNTY POSTAL HISTORY* by Emma Koberg. 81 pages, maps, postmarks & illustrations. Plastic bound. List price \$8.00. Member's price \$6.40. P&H \$1.00

*MANUSCRIPT POST OFFICES OF NEW YORK STATE*, edit by Chlanda & Wilcox, 1984. 54 pages plus the 1999 Master Supplement. List \$14.00pp; Member's price \$11.20pp

*1999 MASTER SUPPLEMENT TO THE Manuscript Post Offices of New York State* (1984), ed. by Douglas Penwell, \$ 5.00, member's price \$ 4.00. Both pp.

*200 YEARS OF CAYUGA COUNTY POSTAL HISTORY* by Charles H. Sweeting, 1998, 346 pages, hardbound in burgundy cloth with gold stamping. Contains manuscript, straight-line, county and postmaster cancels, precancels, early Air Mail Service, local First Day Covers and philatelic notables. Documentation is given for postmaster appointments, followed by pictures and comments about them. Site location maps are included, as well as illustrations of mail used at these post offices. List Price \$40.00; Member's price \$32.00 both pp.