



Empire State
Postal History
Society

BULLETIN

Volume No. 27 / Number 1

June 1994

URGENT! URGENT! URGENT!

Due to the recent abrupt resignation of our **Bulletin** editor and Publications Committee chairman, the ESPHS is urgently looking for volunteers to fill these positions! Publications are one of the most important parts of any strong society, and ours is no exception.

John Lange and George Bernadt (along with a little help from Ray Coco) have struggled to get out this issue of the ESPHS **Bulletin** so that continuity in our publication's schedule is maintained. However, due to their already busy schedules of other ESPHS activities, they can hardly be expected to continue to prepare and publish the **Bulletin** into the future.

THEREFORE:

Volunteers are needed immediately to act as **Bulletin** editor and Publications Committee chairman. Neither post requires a great deal of time, but the importance of these positions to the Society cannot be exaggerated.

So, if at all possible, volunteer for one of these posts so that the ESPHS will not wither and die. It is generally conceded that a publication like our **Bulletin**, which includes our postal history auction, is the glue that holds a flourishing organization like ours together!

You may discuss this matter more fully by calling or writing our President, Lou Call. Any questions or concerns you may have can be discussed before any commitments are made. Some of our members who are familiar with publications we produced in the past, are also available for consultation.

It is not necessary for the **Bulletin** editor to live in any given area. Our **Journal** editor, Martin Margulis, resides in Texas.

President Call sent out a letter of appeal regarding this critical issue a few weeks ago. Unfortunately, response was almost nil.

Come on - let's go!!

Please Contact:

Louis T. Call Jr.
President, ESPHS
RD#2, Box 62
Little Falls, NY 13365-9384
(315) 823-4804

If you have not yet paid your 94-95 dues there will be a red star on your address label.
(Our fiscal year starts May 1) Send your \$10.00 to the treasurer.

SOCIETY NEWS

Contributions always welcome for this feature - please send to:

John Lange
ESPHS Secretary/Treasurer
373 Root Road
Ballston Spa, NY 12020-3227

You can call me at (518) 882-6373. The best time to call is in the afternoon between 1-6 PM.

We welcome the following new members:

Fribourg, Charles L.
2 Johnny Circle, East Greenbush, N.Y. 12061-2012
Interests: General FDCs, Naval FDCs,
U.S. mint stamps, printed info on stamps & history

Gerwitz, Paul R.
119 Jamestown Terrace, Rochester, N.Y. 14615-1119
Interests: Postmarks, US, UN, Japan, Spain, Russia,
Meters, PBs, Precancels, perfins FDCs, Event covers

Loker, Donald E.
P.O. Box 998, Falls Station
Niagara Falls, N.Y. 14303-0988
Interests: Postal cards, Niagara Co. Postal History

Membership applications received from:

Dillaway, Dr. Guy R.
Box 181, Weston, Mass. 02193
Interests: Gr. Britain, Mass PH, Prexie PH
References: APS, ASDA, etc.

Gadbois, Richard J.
Four Lilly St., Newburgh, N.Y. 12550-4303
Interests: US & Canada, Greece, UN, Xmas S., Scouts,
NY covers from local county
References: APS

Montgomery, Robert
Box 181, Wyomong, N.Y. 14591
Interests: NYS Postmarks, P.O.'s & Precancels, FDCs
References: ATA 505, Western NY precancel club

Gorman, David
376 Margaret St. Apt. E12 Hazyray Shores
Plattsburgh, N.Y. 12901
Interests: Plattsburgh, N.Y., Portland, Me.,
Brattleboro & Northfield, Vt.
References: APS, GPS

Martucci, Tony
157F Arthur Kill Rd., Staten Island, NY 10306
Interests: U.S. stamps & PH

Nicot, Douglas E.
Box 121, Shortsville, N.Y. 14548
Interests: NYS Postal History
References: APS

[continued on page 3]

ESPHS Bulletin

Published quarterly by the:
EMPIRE STATE POSTAL HISTORY SOCIETY
APS Affiliate #138

Officers and Committee Chairman

President: *Lou Call*
Vice President: *Stephen Matte*
Secretary-Treasurer: *John Lange*
Directors:
(95) *George Bernadi, Kenneth deLisle, Alan Parsons*
(96) *John Azarkevich, Richard Lohrman, Gerald Wiley, M. Tirums*
(97) *Ray Coco, Jack Haefeli*

Auction Manager: *George Bernadi*
Regional Representatives:
Western: *Ada Prill*
Mohawk/Hudson: *Maris Tirums*
Northern: *Stephen Matte*
Central/Southern: *Alan Parsons*

Send general society business to:
John Lange, Secretary
373 Root Road
Ballston Spa, New York 12020-3227

Publications

Journal Editor: *Martin Margulis*

Bulletin Editor - Glenn Estro

President's Letter

We finished our year with a good meeting at the Italian Feast Restaurant in Little Falls. The food was excellent and the talk was refreshing. There was a lot of very good material and we all enjoyed ourselves.

We will be having a regional meeting at CINCOPEX (August 6 and 7) at Hamilton, New York (Colgate University). There will be an exhibiting workshop on Saturday so bring your questions.

I also encourage you to exhibit at CINCOPEX. Contact Al Guenzburger for a prospectus. The more our members exhibit, the better for the Society. I will be looking forward to seeing all of you there.

Our plans for STEPEX, which will be held in October in Horse Heads, NY, will be announced in the next issue of the **Bulletin**.

I will close with a paraphrase of a message by Fred MacDonald (M.P.O.S.). The ESPHS is a non-profit group and all directors, officers, and members of committees serve without compensation. It is time to consider nominations for next year's elections. We had one directorship with no nomination this year. I filled it with a one-year appointment. This should not happen again.

Respectfully submitted,
Lou Call

Membership applications received from:

Orton, Walter J.
2265 Long Road, Grand Island, N.Y. 14072
Interests: Postal History, early U.S.
References: APS, RPS, USPCS, ARA

Quinby, Roger P.
PO Box 12606, Albany, N.Y. 12212
Interests: Postal History
References: APS, CCNY, Rossica Society, SCC

Tesmer, Dr. Irving H.
127 Fayette Ave., Buffalo, N.Y. 14223-2707
Interests: US, Western NYS covers
References: APS

Re-instated member:

Whittlesy, John S. (resigned 10/93)
1617 Cabot Court, Mentor, Ohio 44060
Interests: 19th Century Industrial named towns & mills of NYS, Pa, Oh & Va

Resigned:

McHenry, Gordon
PO Box 1117, Osprey Fl. 34229-1117

Seifert, Mrs. Nettie
4 Russell Rd., West Albany, N.Y. 12205-3313

A list of ESPHS directors, their addresses and phone numbers has been prepared and is available from the secretary upon request. A SASE will be appreciated.

Speakers Bureau: The ESPHS has established a Speakers Bureau. Volunteers, please send your name and topic to the Secretary. A 50 mile radius from your home is suggested; please list an optional distance if you are willing to travel further. This service is intended to be used by local stamp clubs and the Federation of Central NY Philatelic Societies, possibly as a tie in to their request for a seminar on preparing exhibit pages. It also has the potential for enlivening some of our own ESPHS meetings.

MINUTES OF THE ANNUAL MEETING (May 1):

The meeting was held at the *Italian Feast Restaurant* in Little Falls and started at 1:30 pm.

1. Secretary's Report: As of May 1 we have 219 members. Membership renewals are coming in at a good rate. The Society is continuing its membership in the Federation of Central NY Philatelic Societies, but has dropped the 10 copies received of the *Insider* due to inability to further distribute. Jack Haefeli has resigned all of his publication related positions, effective April 12, 1994. We need a volunteer to assume the post of Publication Committee chairman and another volunteer to take the post of *Bulletin* editor.

2. Treasurer's Report: A brief outline was given. The main body of the report itemizes the expenses and revenues for 1993-1994, May 1-April 30. Due principally to the non-publication of the *Journal*, we finished the year with a large surplus of \$2364.31. Our current bank/mutual fund balances as of April 30, 1994 total \$15,488.27. The full Treasurer's report includes:

Appendix I gives a detailed breakdown of publication expenditures/revenues.

Appendix II is a summary of our four auctions.

Appendix III is a comparison of budgeted vs. actual expenditures/revenues.

Appendix IV is the proposed budget for 1994-1995 (details included in this *Bulletin* on page 4).

The Treasurer's Report had been approved in a director's meeting immediately preceding the membership meeting. Copies of the Treasurer's report are available to anyone upon request.

3. Awards for shows-Participation by ESPHS members

3.1 Al Guenzburger is willing to contact clubs that he knows are having shows and ask them to coordinate with our awards chairman, Ken deLisle. Al and Ken's addresses are:

Albert Guenzburger
PO Box 149
Guilford, N.Y. 13780-0149

Kenneth R. deLisle
9 Circle Lane
Albany, N.Y. 12203-2216
(518) 489-5365

Ken has prepared, and can provide "General Rules & Regulations of the Awards Committee" and "Criteria for Show Awards"

3.2 President Call noted that CINCOPEX 94 will be in Hamilton, N.Y. on Aug 6 & 7. Exhibits from ESPHS members are encouraged. Call noted that he has worked with the Federation to put on a workshop for exhibiting at ROPEX and wanted to do the same at CINCOPEX. Selection of material, mounting, etc. are possible topics. The ESPHS will have a table at CINCOPEX. Cliff Tuttle said he would help out at a table on Saturday, Dick Lohrman can help Sunday.

4. Directors elected for 1994-97: Jack Haefeli and Ray Coco. Director named to fill the remainder of Charles Edward's term, 1993-96: John Azarkevich. Director elected to fill open directorship: Maris Tirums appointed on an interim basis for one year expiring May 1, 1995. (term is 1994-97).

5. It was agreed to reimburse John Azarkevich \$15.00 to partially cover the regional meeting in Schenectady, held last March. Azarkevich is enthusiastic about having another regional meeting in the capital district. He states that the Schenectady Municipal Golf Course is a possibility for a Fall/Winter location.

SOCIETY NEWS

[con'd from page 3]

6. The Fall meeting date was set at October 2. Dick Lohrman will pick the location and notify the Secretary.

7. Although we do not have a **Bulletin** editor, publicity for items 5 & 6 should be aimed for **Bulletin** publishing (mailing) dates of June 15, Sept. 15, Dec. 15 or March 15 with the input to the **Bulletin** editor prior to the 1st of those months..

The meeting was adjourned at approximately 2:10 P.M.

Appendix IV - Approved Budget for 1994-1995:**REVENUES**

Dues, 1994-1995	\$2000
Dues, 1995-1996	200
Publications	
Smith & Kay	30
MS PO of NYS	100
Ontario Co. Postal History	7
Wayne Co. Postal History	14
Star Cancels	75
Co. & PM Cancels	60
Postmarks of NYS 1792-1856	1200
Auctions	275
Interest and dividends (13,000 @4%)	520
Donations	10
Ads in the Bulletin	40
Total Revenues	\$4531

EXPENDITURES**Bulletin (4 issues).**

Printing	400
Postage	350
Editor's expenses	
a) If Editor does on volunteer basis,	50
If Editor needs to pay someone	
to do computer work	650
Labels	20

Journal (2 issues) plus Roster

Printing	1500
Postage	350
Bulk Mailing Permit	75
Editor's expenses	
a) If Editor does on a volunteer basis	80
b) If Editor pays for computer work	800
c) Labels	10

Publications

Doane cancels booklet, minimal work	50
Publicity efforts, including freebies	50
Initiate further work, STAR Cancels	
revision	50
Initiate work on another publication	50

Administration/Meetings	
President's expenses	100
Sec-Treasurer's expenses	150
Meetings	30
Executive Board/Executive Committee	120
Regional meetings	150
Federation membership	20
Bank charges (mainly check re-order)	10
Miscellaneous	50

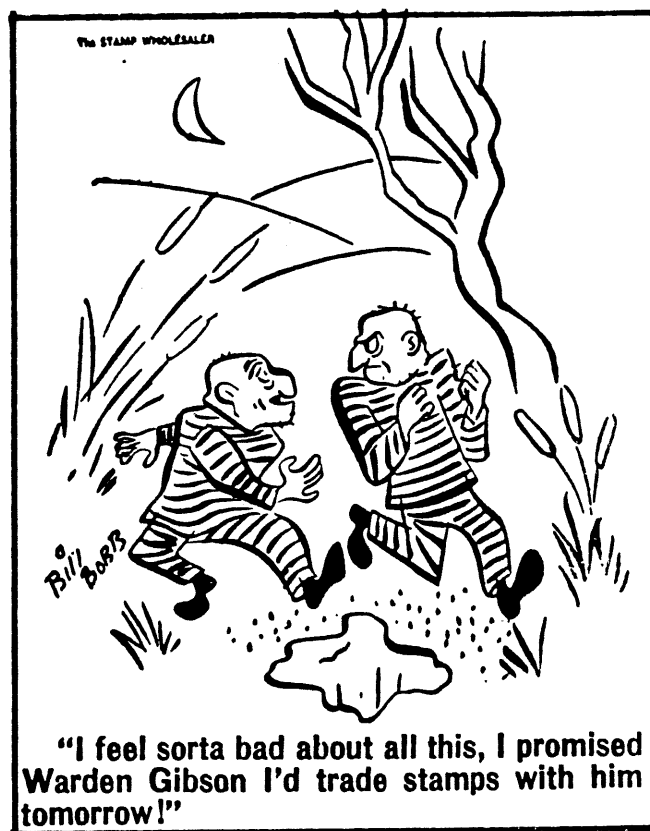
Committees & Projects (partially	
already covered under "Publications")	
Awards & Show support	150
Publicity	50
Recruiting (covered under Sec-Treas	
exp & Publicity)	0
Miscellaneous	50
Total Expenditures	\$5235

SUMMARY:

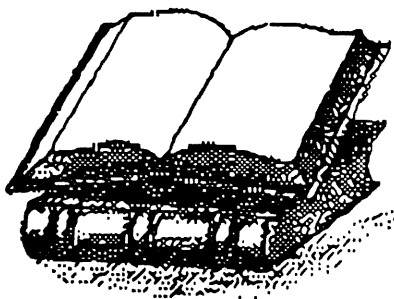
Expenditures	5,235
Revenues	4,531
	-\$ 704

A \$704.00 deficit plan which we certainly can afford in view of our publishing effort and the large surplus year.

John A. Lange
Secretary/Treasurer



Turn your surplus postal history material into CASH!
Send lots for our auctions to George Bernadt.



The following publications were printed by your Society and are currently available. Members are entitled to a 20% discount from the list price. There is a postage and handling charge if ordered through the mail, please add it to the book cost. If you order a number of books at one time, the maximum postage and handling charge will be \$3.00. Order from ESPHS, 373 Root Road, Ballston Spa, NY 12020-3227.

Volume discounts are available to established dealers in books, postal history, etc. Write for details on your letterhead.

MANUSCRIPT POST OFFICES OF NEW YORK STATE. The definitive work! Published in 1984. Includes supplements. List price \$12.00. Member price \$9.60. P&H \$1.00.

Our **FEDERAL POST OFFICES OF NYS** booklet in the 5 1/2 by 8 1/2 inch format is being reprinted and will soon be available at roughly the original cost. This booklet (which is alphabetical) gives the county where a PO is located and is a valuable adjunct to George Bernadt's Postal Markings catalogue listed below. It fits nicely into the cover pockets of the binder of the catalogue, or can be used separately if so desired.

POSTAL MARKINGS OF NEW YORK STATE 1792-1856 by George Bernadt. A priced catalog of NYS stampless cover markings published in 1993. 382 pages. Available in two formats: 1) pages only, punched for three ring binder, or 2) bound with 19 ring spiral plastic in card covers. Specify format wanted with order. List price \$25.00. Members price \$20.00. P&H \$3.00.

A three ring binder for this book is available. Clear plastic overlays on the front, spine and back with title inserted and interior pockets. A nice home for the above book plus room for future additions and your own notations. Price when purchased with punched pages is only \$4.00.

STAR CANCELS OF NEW YORK STATE by David Proulx. 32 pages, illustrated, staple bound, card cover. List price \$9.00. Members price \$7.20. P&H \$1.00.

COUNTY AND POSTMASTER CANCELS OF NEW YORK STATE by David Proulx. 44 pages, illustrated, staple bound, card cover. List price \$9.00. Members price \$7.20. P&H \$1.00.

ONTARIO COUNTY POST HISTORY by Emma Koberg. 95 pages, maps, postmarks & illustrations. Plastic bound. Reprint. List price \$10.00. Members price \$8.00. P&H \$1.00.

WAYNE COUNTY POSTAL HISTORY by Emma Koberg. 81 pages, maps, postmarks & illustrations. Plastic bound. List price \$8.00. Members price \$6.40. P&H \$1.00.

OTHER PUBLICATIONS AVAILABLE

As a special accommodation for members only, we offer **NEW YORK POSTAL HISTORY: THE POST OFFICES AND FIRST POSTMASTERS FROM 1775 TO 1980** by Smith & Kay and published by APS at a retail price of \$40.00. This is the NYS PH "Bible" and we make this available to ESPHS members for \$29.00 plus \$1.00 P&H.

THE POST OFFICES OF THE COUNTY OF DUTCHESS, STATE OF NEW YORK by Roy Ahlquist. Price \$2.50, postpaid. Order directly from the author, Roy Ahlquist, RR1, Box 122, N.Quaker Lane, Staatsburg, NY 12580.

WANTED: SARATOGA COUNTY, N.Y.

Better grade stampless covers wanted for exhibition purposes from these towns:

Ballston, Ballston Centre, Ballston Spa, Ballston Springs, Barkersville, Batchellerville, Bemus Heights, Birchtown, Burnt Hills, Charlton, Clifton Park, Concord, Conklingville, Corinth, Coveville, Crescent, Day, Deans Corners, Dry Dock, Dunning Street, East Day, East Galway, East Line, Edgecombs Corner, Edinburgh, Elnora, Fortsville, Galway, Gansevoort, Grangerville, Greenfield, Grooms Corners, Hadley, Hagedorns Mills, Half Moon, Jonesville, Ketchums Corners, Malta, Maltaville, Mechanicsville, Middle Grove, Milton Center, Moreau, Mosherville, North Galway, North Greenfield, Northumberland, Porters Corners, Providence, Quaker Springs, Rexford Flats, Round Lake, Saratoga, Saratoga Springs, Schuylersville, South Ballston, South Galway, South Glens Falls, South Greenfield, Stillwater, Victory Mills, Vischers Ferry, Waterford, Wayville, West Charlton, West Day, West Greenfield, West Milton, West Providence, Wilton.

Send on approval or a Xerox copy with price to:

John A. Lange Jr.
373 Root Road
Ballston Spa, NY 12020
(518-882-6373)



Due to the space constraints within this **Bulletin**, there wasn't enough room to include all of the trading post ads we received for June. If you do not see your ad this month, please be assured it **WILL** appear in the next issue of the **Bulletin**.

WANTED: BROOME & CHENANGO Co. covers, especially early Binghamton or smaller short duration offices. Send description or xerox with price to David E. Williams, 7115 Abbey Woods Dr. NE, New Salisbury, IN 47161. (1/1)

My Mail Bid Sales feature DPOs, RPOs DOANES & more! Write for free catalogue! Also ask about my RPO & AGENT postmark identifiers. Jim Mehrer, 2405 30th St., Rock Island, IL 61201.

WANTED: CHENANGO Co. stampless covers. Contact Bob Yacano, PO Box 94 Eden, NY 14057. (6/6)

Huge stock of **NEW YORK STATE POSTAL HISTORY** on sale. Your want list invited. Also Buying cover lots. Contact: Henry Chlanda, PO Box 11047, Loudonville, N.Y. 12211.

FOR SALE: 1883 POST ROUTE MAP of all **NEW YORK** and parts of **VERMONT, MASSACHUSETTS, CONNECTICUT, NEW JERSEY** and **CANADA**. Map is 65 1/2" x 57" paper mounted on linen. Wear & tear due to age should be expected. Water stains, rough edges, several surface pieces missing (1"x1" & (1"x2"). Cost \$1500.00. Contact: W. Stearns, Box 396, Hicksville, N.Y. 11802. Telephone (516) 822-2562. (4/5)

WANTED: PHILIPPINES material: anything, any period. Contact: Bob Yacano, PO Box 94, Eden, NY 14057.

WANTED: Unusual ESSEX Co. POSTAL HISTORY. Also these POs-Adirondac, Boquet Mills, Brookfield (Essex Co.) Cheever, Chilson Lake, Dead Water Iron Works, Douws, East Moriah, Elizabeth C H, Euba, Dam Mills, Glen Valley, Highland, Keene Flats, Langmann, Pardo Lake, Pineville, Ponds ville, Putsville, Pyramid, Saint Armand, Stevenson, Tahaw Wells Corners, Wessx, West Essex & Woodwardville. Contact: Glen A. Estus, Box 451, Westport, NY 12993-0451.

FREE NET PRICE LIST of New York State **COVERS**. Other state lists & RPO available. Write to: Elwyn Doubleday, PO Box 259, Alton Bay, NH 03810. Telephone (603) 875-5347. (6/6)

VIRGINIA POSTAL HISTORY: Buying all types Nut & Bolt Fastener covers. Bettsville, Ohio covers. Send photocopies & price to Russell Crow, 3001 Hanover Ave., Richmond, Va 23221.

WANTED: MANUSCRIPT POSTMARKS: 1. **ORANGE CO.** - Cadiz, Craigsville before 1840, Cuddebackville before 1840, East Coldenham, Greenwood Works, Highland Mills, Middle Hope, Minisink before 1840, New Hampton, Otisville, Oxford Depot before 1853, Port Jervis before 1840, Ridgebury before 1847, Slate Hill, Sparrowbush, Sugar Loaf, Wardsbridge before 1840 & Wells Corners. 2. **WESTCHESTER CO.** - Bedford Hills before 1820, Cortland town before 1841, Dearmans, East Chester before 1840, Elmsford, Hallock's Mills, Kingsbridgeville, Mount Kisco, New Castle, New Rochelle, North Salem, Pleasantville, Purdy's Station, Somers before 1820, Tarrytown, West Somers & Yorktown. Contact: Martin Margulis, Mesa Village Condo, 4159 Steck Av 113H, Austin Texas 78759. (6/6)

WANTED: ROCKLAND CO. stampless, NYC stampless, Bergen Co., N.J. stampless, Any Wyckoff, N.J. covers. Contents preferred! Margarete Faber, PO Box 1875, Bloomington, IN 47402-1875.

WANTED: Old Post Cards showing NYS POs Small town only! Agnes Cavalari, 89 Bethlehem RD., Windsor, N.Y. 12553-8902.

Just Published! - **OTSEGO COUNTY POSTAL HISTORY**, 221 pgs, many photos & cancels from all towns. \$20.00 + \$2.25 P&H or \$2.90 Priority Mail. Dorothy Scott Fielder, RR1 Box 1038, Maryland, N.Y. 12116-9769.

Buying U.S. & Worldwide covers. APS registered dealer. William J. Powers, 9 West Dr. Castleton, N.Y. 12033.

WANTED: 1860s letters/covers to or from Skanens of Stockbridge, N.Y. - Albert, Maria, John C. Jr. Herb McNeal, 520 Lakemont Av., Winter Park, FL 32792.

WANTED: SUMMERSTOWN STATION, ONTARIO covers of any sort or era. Lisa Sizeland-Ross, 600 Caroline St. Ogdensburg, N.Y. 13669-2606.

WANTED: DELAWARE COUNTY, NY 1860-1920. Unusual cancels, interesting uses No stampless, 4 bars or Duplexes. Ada Prill, 130 Trafalgar St., Rochester, N.Y. 14619-1224.

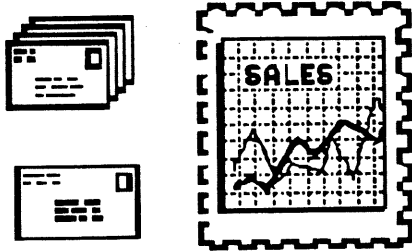
WANTED: SCHUYLER or TOMPKINS COUNTY covers prior to 1920. Phil White, Box 47, Mecklenburg, N.Y. 14863.

APPROVALS-U.S. and NYS stampless covers. **HANDSTAMP AND MANUSCRIPT POSTMARKS.** Let me know your needs. Bill Thoman Cortland Covers, Box 371, Homer, N.Y. 13077.

WANTED: New Jersey-Bergen, Passaic & Essex Counties Postal History. Stampless, Advertising, Post Cards. Michael A. Puzio, 1022 Hampton Place Boulevard, Troy, N.Y. 12180.

BUYING: Asian covers before 1920. Send photocopy for prompt offer! Also, better Denmark covers. Martin Toly, PO Box 2111, Liverpool, N.Y. 13089.

AUCTION ACTION



George J. Bernadi, Auction Manager
1470 Wyoming Ave., Schenectady, N.Y. 12308

Please continue to send good saleable material as we do not have all that much on hand and will run short within the year if no further material is forth coming.

MY APOLOGIES to those members to whom I owe correspondence, etc.. I suffered a major heart attack which was the cause of any delay. I'm slowly recovering and hope to catch up soon. I thank you for your patience. Meanwhile keep good saleable material coming - our auctions WILL continue!!

Prices Realized on SALE #79:

1. \$10.00	27. \$ 8.50	53. \$ 9.00	79. \$ 10.00
2. 16.50	28. 17.00	54. NB	80. 15.00
3. 13.00	29. 10.50	55. 7.00	81. NB
4. 5.50	30. 15.00	56. 4.50	82. 1.25
5. 9.00	31. 6.00	57. 5.00	83. 2.50
6. 8.00	32. 5.00	58. 11.50	84. 3.00
7. NB	33. 10.00	59. 1.75	85. 6.00
8. 8.00	34. 2.50	60. 12.00	86. 3.50
9. 3.00	35. 2.50	61. 12.50	87. 26.00
10. NB	36. 6.50	62. 5.00	88. NB
11. 6.50	37. W	63. 3.50	89. 5.50
12. 9.00	38. W	64. NB	90. 10.50
13. 12.00	39. 5.00	65. 6.00	91. 7.00
14. 5.50	40. 5.50	66. 12.00	92. 7.50
15. 7.50	41. 5.00	67. 4.50	93. 3.00
16. 22.00	42. 5.00	68. NB	94. 6.50
17. 12.00	43. 4.75	69. 10.00	95. 4.00
18. 8.50	44. 19.50	70. 3.50	96. 4.00
19. 13.00	45. NB	71. 80.00	97. NB
20. 10.50	46. 25.00	72. 2.50	98. 5.00
21. 10.50	47. 11.00	73. 6.00	99. 8.50
22. 7.50	48. 11.00	74. 14.50	100. 11.00
23. 7.00	49. 19.00	75. 10.00	
24. 17.00	50. 16.00	76. 6.50	TOTAL
25. 4.75	51. 4.50	77. NB	SALE :
26. 22.00	52. 37.50	78. NB	\$867.75

SALE #80

DEADLINE FOR BIDS: July 15, 1994

1. MSC-AMBOY NY 6 on F+ 1943 FL...!
2. MSC BRIDGEHAMPTON NY 6 on sl aged 1831 FLS addr to QUOGUE P.O. & w msc PM at Quogue is / requested to forward / this if not called for / soon.!

3. MSC-CALDWELL(NY) Paid 10 on VF 1822 FL...!!!
4. MSC-CAMBRIDGE NY free/C.Rice Jr PM on VF 1825 FL.
5. MSC-Saml Allen PM/COPENHAGEN NY Free on VF(ff) 1836 FL ...!
6. MSC-EAST HAMPTON NY 371/2 on VF 1829 FL Contains fascinating letter!!!!
7. MSC-ELIZABETHTOWN/NY 371/2 w msc"double",etc. on slightly age stained(ff) 1841 FL-
8. MSC-HARTWICK NY Paid 3 on VF small Lady's ENV.
9. MSC-FAYETTE NY 5 on somewhat age stained ENV..
10. MSC-HAMILTON(NY) Free Jnoh Stoner on VF(ff) FL docketed 1828---No contents.
11. MSC-HANNIBAL NY 5 on F+(ff) 1848 FL...
12. MSC-HULLS CORNERS(NY) 6 on F sl aged 1841 FL. contains long letter datelined Northumberland
13. MSC-KENDALL(NY) Paid 121/2 on F lg 1838 FL.
14. MSC MACHIAS NY 5 on F sl aged 1847 FL...
15. MSC MECHANICS VILLE(NY) 6 on VF+ blue 1844 FL.- Has long interesting letter....!!
16. MSC-MILLERS PLACE N.Y. 5 on F+ FLS(no cont)..
17. MSC-ORWELL NY 5 on VF 1846 FL-Int. conts.!!
18. RAIL-ROAD in faint or-red semi-circle w msc 12+ on sl aged stained 1837 FL--This is one of earliest R.R. mks & was used on the MOHAWK & HUDSON R.R.--Datelined Herkimer addr to Albany---Scarce!!
19. 3 F FLs w UTICA,NY ovals 1 blue w PAID-in-ribbon & V in double cir.-2nd is o-r w PAID-in-rib.& msc 20- 3rd is o-r(faint) w FREE-in-fancy box-1833/1848..
20. Rare BUFFALO mkg-DRAWER/C/PAID in red 17mm circle w blue BUFFALO N.Y./MD/10 in 32mm CDS & HS PAID.All on VF+ 1850 FL- Cont headed Hollister Bank!!
21. CLEVELAND/MD/N.Y.(san-serif letters) w PAID/3-in- circle on F lightly stained,small Lady's ENV-
22. LITTLE FALLS/MD/N.Y. in 31mm o-r CDS w HS FREE & msc Office of the Solicitor/of the Treasury/V. Maxey (1831-35) on 8" sl aged(1/2" torn off at upper right does not interfere w mks) FLS-no cont.Cat \$50 !
23. Turned cov-GLENS-FALLS/MD/N.Y.w HS PAID & msc 5 on 1 side & ELIZABETHTOWN/MD/N.Y. on other-F+1848 FL.
24. MEXICO/MD/N Y. & HS X-in-cir on F+ sl aged small Lady's embossed ENV- Light but clear strikes...
25. MOHAWK/MD/N.Y. in orange 30mm CDS w msc 6 on VF 1841 FL
26. MOUNT-MORRIS/MD/N.Y. & neg.10-in-solid circle on F+ 1848 blue FL-Cont long interesting letter..

27. REXFORD-FLATS/MD N.Y. in o-r 27mm light,clear CDS w msc 6 V int political let datelined Clifton Park.F+1838 FL!

28. SALINA/MD/N.Y. w HS PAID & 3 in 12mm dotted cir. Contains long personel let datelined Syracuse-F sm ENV!

29. SARATOGA SPRINGS/MD/N.Y. in bold blue 32mm CDS w msc 5. on VF blue ENV docketed 1848--!

30. Unused pre-franked ENV w msc G.O. Simmons/MC-- Contains flyer of mortgage sale in county of ESSEX(NY)-dated 25 June 1857--VF ENV & very, very unusual!!!!

31. CINCINNATI. O.(2mm let)/MD/3 PAID in bold red 35mm CDS w HS PAID Flap,has lg dark blue oval cc of ELLIS & STURGES/BANKERS,etc. on VF ENV-Cont dated 1854.Cats \$125.00 w/o colorful flap. A GEM!!!

32. CITY OF WASHINGTON/MD in 33mm o-r CDS w HS FREE & msc-Office of the Solicitor/of Treasury/V Maxey(see lot #22 above) on lg sl aged 1835 FL

33. X-BORDER item-Has faint GRAND RAPIDS,MICH CDS + 1859 HAMILTON,U.C. CDS + st line CANADA 10 CENTS + msc 10/For.3/13(total rate) all on face.Reverse has faint C.W. transit CDS.ENV is F w rough right edge from opening. Contains long interesting letter!!!

34. X-BORDER item-Has HAMILTON/MDY/U.C. CDS w st line CANADA-10-CENTS. & WINDSOR/C.W. transit CDS on reverse. Contains long letter Rough at right from opening..F ENV

35. 3 BRITISH stampless FLs-1806;1807 & 1825 all with various G.B. HSs & msc rates incl Oval SHIP LETTER,etc.

36. NEW-YORK CENTRAL RAILROAD/GEN. SUPT'S OFFICE, / No. 521 Broadway,Albany. in lg double lined box cc. Has 4 marg #11 tied by lg clear ALBANY,NY CDS. Bold R.R.B. appears in lower left corner of VF+ ENV....A GEM!!!!

37. #11 almost 4 marg(just touches frame line at lower left)-tied by neat MALONE,NY CDS w s-o-n OCT/12 underlined by wavy line,on VF sl soiled buff ENV...

38. 3 F+ ENVs w above ave #11s-1 has blue CDS, another has o-r CDS & 3rd has black CDS---An excellent lot!!!

39. #10 w huge 7mm upper marg tied by lg blue MILWAUKEE, WIS CDS to blue FL datelined Aug 21,1851. Has ff thru stamp. Contents-long letter...

40. 2 VF ENVs w #11s tied by red WALLINGFORD,VT & black MONTPELIER,VT CDSs-latter almost 4 marg Claret.

41. Straight edged #24 tied by BOSTON PAID in grid to F front only. Has sm red BOSTON CDS--!

42. CROSS GUTTER #26 tied by 1860 NYC CDS to F sl aged ENV. Has some extraneous numbers on face not into mkg.

43. #11 pen-canc on sl aged multi-colored CIVIL WAR PATRIOTIC (SOLDIER holding FLAG & RIFLE) w clear 33mm CDS-CARTHAGE LANDING/MD/N.Y. addr to STORMVILLE DUTCHESS COUNTY NY. Has minor closed tears & part of flap missing. A v scarce item!!!

44. 2 ENTs-#U9 w FONDA,NY CDS-VF & #U10 w GLEN'S FALLS NY CDS F+-Latter contains 4 page letter---!!

45. #U13 ENT-sl aged w rounded corners. Has faint blue HS PAID & msc 2/- in upper left corner.Scarce & unusual

46. Lg blue double-lined rectangle cc w NEW-YORK CENTRAL R.R./TELEGRAPH OFFICE/Exchange Building,Albany. Has 1864 ALBANY,NY CDS & cork kil tying #65 to VF ENV-!!!

47. #65 tied by fancy cork kil to VF sm ENV. Has BEMUS HEIGHTS,NY in large CDS---SARATOGA CO. D.P.O.---

48. #65 w s-o-n US-in-circle & KEESEVILLE,NY CDS on VF orange ENV.

49. #65 tied by odd blue kil to VF orange ENV. Has sl blurred CDS of LEONARDSVILLE,NY & HS FORWARDED/Due 3 + Also has DCDS of UTICA,NY from whence forwarded.Nice!!

50. Ave,off-cent #65 tied by partial circle of dots w McLEAN/ NY.AUG19 in 2 s/ls on somewhat aged & soiled ENV. Contains long letter.....!!

51. #65 w STAR-in-circle kil & WESTFORD,NY CDS on VF ENV...!! Nice!!

52. 5 items-2 w #65s(1 w balloon SHELTER ISLAND CDS)- 2 w 3c gr BNs both w lg NYC ccs & 1 w 2c COLUMBIAN w ZETA PSI CLUB cc--All F to VF ENVs. A worthwhile lot!

53. VF #U26 ENT w PERRY,NY CDS-& sm Oval Grid kil--!!

54. #65 on CIVIL WAR PATRIOTIC-reverse has colorless embossed EAGLE ON SHIELD & flaps outlined in RED & BLUE.Has blue PLANO,ILL CDS on F+ sl aged ENV addr to 13th ILL/Cavalry/Company K/PILOT KNOB MO.

55. Lg VALENTINE ENV heavily embossed w fancy floral designs. Has 2c Blackjack #73 & CDS of PORT JEFFERSON, NY(lightly struck)--F+ Nice Suffolk Co. item!!

56. 1c #112(sl damaged & peppered w black dots) tied to F+ yellow ENV by target kil-has CANTON,NY CDS & embossed cc..Still a nice item!!

57. 2 R.R. covs-a matched pair -Both have BOSTON & TROY R.P.O. CDSs w 2c br BNs on VF ENVs-1 has lg cork E kil indicating "EAST" while other has neg W in solid circle for "WEST"..1st has AMERICAN HOUSE/FITCHBURG, MASS cc. An unusual R.R.pair of covs!!

58. COLORADO SPRINGS,COLO 1885 CDS w neg P in solid circle within a larger circle tying 2c br BN to VF ENV. Contains long letter!!! A Gem!!!

59. SPRAGUEVILLE,/MAR 26 1884/St.Lawrence Co.,N.Y. in double lined OVAL outer line serrated. Has scrungy 2c br BN. Cont-long let w fancy illus-Unusual!!!

60. EARLIEST known BI-COLORED mkg.-MILL POINT/ MD 1884/ MONTGOMERY COUNTY,N.Y. in double lined DCDS of which up.1/2 is pink & low.1/2 is purple,w 2c br BN on F ENV

61. KENT/MD1885/Litchfield Co./CONN. in DLDS w target kil - tying 2c gr BN to VF ENV!!!

62. 2c br & 3c gr BNs on let to ENGLAND. Has HARTSDALE NY CDSs on front(partial) & reverse of F+ ENV..also has 8diff British HSs on much Forwarded cov. V v unusual!!

63. 15c or BN(#154) & 3c gr BN tied by LOUISVILLE,KY CDS & cork kil to sl aged ENV. Has cc of legal firm. This stamp is RARE on cover!!!

64. 1c bl BN + pr 2c br BNs tied by BROOKLYN,NY CDS to F+ sl aged ENV to GERMANY---!!
65. 4 BN covs- 1c bl(circular rate) w cc; 2 w 3c grs & 1 w 2c br on F-VF ENVs--All have CDSs of sm NYS POs!!
66. 10c br & 2c gr BNs on regis cov.Both have STAR kils tying them to VF ENV...
67. 3 covs w FANCY kils-neg D in solid circle tying 1c bl BN to F+ ENV w cc; 2nd-#UX3 PC w circle of sm wedges VF & 3rd VF #UX9 PC w bar thru neg A in solid circle.
68. 5c #205 w 1884 BROOKLYN,NY CDS on F+ ENV to GERMANY -much forwarded w German CDSs front & back-Nice!!
69. #65(s/e) w lg v fancy cc-J.REYNOLDS/LEATHER /etc. etc./Pultneyville,Wayne Co.N.Y..Has PULTNEYVILLE CDS on VF orange ENV w cont dated 1864----!
70. ADV cov-Huge green illus of PEAS & PEA PODS w cc of THE CLEVELAND SEED CO/CAPE VINCENT,N.Y..Has CDS of CAPE VINCENT,N.Y. & 2c red of 1900 tied by lg 131(or,lg upside down E between VERT BARS?) All on F+ (v sm vert closed tears at top & flap missing) ENV---Nice!!!
71. ADV cov w Striking dark green overall illus of WOMAN etc. w STAMFORD NEW YORK/"The Queen of the Catskills"in huge letters.on obverse side,while Addr,2c Wash Head stamp & 1914 CDS of STAMFORD,N.Y. are on reverse of VF+ ENV. UNUSUAL to say the least!!!
72. VF #U118 ENT w Lg illus cc of EAST GREENWICH ACADEMY/East Greenwich,R.I.,etc. w EAST GREENWICH CDS...
73. 1911 CDS of MARSHFIELD,MO. w vert oval bar kil tying Two Cent Wash Head(s/e) to F+ sl aged ENV-1/3 of ENV at left has long diatribe describing the virtues of MARSHFIELD " most beautiful county seat in the s'west"!
74. 2 items-1 has clear blue TROY/MD/N.Y. CDS w V-in-double circle on VF 1846 FL-Other has huge fancy logo of A.O.U.W. at BUFFALO,NY w BUFFALO CDS on VF #U379 ENT
75. 10 covs-5 w lg illus Advertisements-others w ccs 1888/1915 period. Varying condition..
76. 2 items w STAR killers-1 ties #220 to F sl aged ENV w KUCKVILLE,NY 1894 CDS w cc.-Other ties 2c br BN to sl worn ENV w PIERREPONT MANOR,NY dcds OF 1884!!
77. Forwarded,VF Regis ENV w #s264,268 & 271 tied by cork kil(horses head??) Also has HS FORWARDED/Registry Div.S.F.P.O. & other Regis. mkg on front & back.Has GARDEN CITY,NY CDS. Addr to Calif.
78. 2 items-1 has #281 tied by NYC CDS & oval of bars of 1899 to F+ ENV. to U.S. Consulate in Vienna-2nd has GERMANY #82 on Xmas Card to U.S.-Has DUE/2/CENTS in binocular type mkg & pair of U.S.#J45s
79. 10c #273 on sl aged Regis cov-Has purple OVAL BOSTON 1898 Regis. Div. mkg. on reverse!!!!--
80. 2 #304s + #302 on VF sl aged #U387 ENT w NYC Regis mkg-to BONN GERMANY--Backstamped--
81. Vert pair #301s tied by R.F.D./JUN 3 P.M. 1904/ SAVANNAH/ N.Y. & 4 bars to VF ENV---
82. 10c #381 + #375 on F+ Regis ENV tied by ABILENE/ TEX. rectangle addr to CUBA w backstamp of same!!
83. 7c #430 on VF 5c #U377 ENT..Has embossed cc on reverse..A tough Registered cov to find!!!
84. 2 WRAPPERS-1 w 2c gr VF #W316 CHICAGO to GERMANY. 2nd-is 1c blue VF #W301 to FOXBORO, MASS..Scarce!!!
85. 3c LOU-PURCHASE #325-s/e-on VF blue 2c #U388 ENT to SWITZERLAND-----a Gem!!!
86. MAP of R.R.LINES around CHAUTAUQUA LAKE & illus of WINDMILL etc. on addr side w BEMUS POINT,NY 1907 CDS tying #300(corner off).Has photographic view of ROAD FROM FERRY & Lakeside on obverse of F+ PC Scarce---!!
87. 3 legal size F+ ENVs 2 have CONSULAR CORRESPONDENCE HSs-& 3rd has DIPLOMATIC MAIL HS-1 from CHILE, 1 from CANADA & 1 from CUBA---V unusual---!!
88. Modern P.H. item-Badly mauled ENV in sealed transparent bag w USPS apology printed thereon..
89. 2 R.R.items-DUBUQUE CITY R.P.O./NOV 11 1888/NIGHT in sl blurred CDS w 2c br BN & lg illus REVERE HOUSE 3 story bldg captioned ACKLEY,-IOWA.(Front only,sl aged). 2nd-2c Wash Head tied by TICOND.& L.GEORGE/MD1916/NORTH /R.P.O. CDS & barred oval kil w RMS therein on F+ ENV.!
90. 4 v int & highly collectable modern PH items-All on somewhat oversized ENVs-1 has violet HSs-Received without contents & Received Unsealed at HICKSVILLE/N.Y (PO name is boxed).Another has Missent to Lyons Falls,N.Y.-3rd has MISSENT TO/LAFARGEVILLE,N.Y. & last has msc Disaster/area instead of stamp. Exceptional lot
91. Small official PENALTY ENV w POST OFFICE DEPT/ POST OFFICE AT NEW YORK,N.Y./OFFICIAL BUSINESS. cc & M.O.B. boxed below Has NYC 1901 CDS+violet HS-Great Britain-VF
92. #E5 Spec Del stamp +2c red tied by 1899 Philadelphia CDS to F+ ENV...
93. 2c PP #Q2 + 1c #397 commem tied to sl aged ENV by BUFFALO/MD & time/1918 2/N.Y.--Postal clerk must have had hangover because he had to cancel 3 diff corners before he got the stamps-Nice combo of PP & comm stamps.
94. Diag 1/2 of 20c MARSHALL definitive tied by GLENS FALLS cds-Has HSs VOIDED & POSTAGE DUE +10c meter of NEW HAVEN CONN.all on VF ENV....
95. #U219-3c gr CENTENNIAL ENT w AUBURN,N.Y. CDS F+!!
96. #498 Pre-canceled BROOKLYN/N.Y. F+ "GOLDEN AGE" PC. w lovely overall drawing of EDEN?? captioned"May we continue etc.etc--as the long looked for Golden Age draws nearer" UNUSUAL to say the least!!!
97. 4 items-VF #UX7 PC w lg purple ARKVILLR,NEW YORK CDS OF 1883; #UX8 PC w bold BATH,N.Y./MD/STEUBEN CO. , &bold STAR kil VF; Sl aged ENV w 3c gr BN & SOUTH ONONDAGA cds-D.P.O. & #374 tied by 1912 TABORTON,N.Y. CDS w 4 bars to F+ ROULETTE GAME view card...

98. 5 Revenue stamp items on documents, etc. - 2 portrait cards w 1st issue 2c blues (1 BANK CHECK other PLAYING CARD); 5c #R24 on 1874 doc.; 2c #73 on part of doc. & 3 #R24s on RECEIPT att to BANK document!!!

99. 5 Revenue stamp item on orig docs - 2 25c ENTRY OF GOODS #R45s on 2 page doc.; #R44 on FIRE INS POL.; #R59 on Mortgage doc.; #R10 on BANK OF LANSINGBURGH check & block of 4 #R168 on margin stock purchase receipt....!!

100. Full BOOKLET PANE (no selvage) #425e on reverse of VF Regis 2c red ENT of 1915--Lightly tied-Very nice!!!

101. 4 cacheted FDCs of PREXYS-1/2c (bl of 6); 1c (strip of 3); 1 1/2c (pair) & 2c. all addr on sl aged ENVs...

102. 2 HPO FIRST TRIP covs-Both have RIVERHEAD NY & HARMON STA. CDSs 1 w TR1 OTHER w TR2 on F+sl soiled ENVs

103. #424 tied by TIME-CUMMINS mach canc-Has 1916 OVAL dial of STEVENSVILLE, N.Y.. Used only there and at Mohonk Lake. Somewhat scarce SULLIVAN CO item on F+ greet. card!

104. 7 STAMPLESS covs-red CLARKSON/MD/N.Y. & PAID; blue GENEVA, NY CDS w V-in-cir; o-r UTICA DODS; NEW YORK/MD/PAID 3 Cts. CDS; blue VERNON, NY CDS; BRIDGEWATER, NY CDS & POUGHE (E hi) in partial CDS...

105. 17 DELAWARE CO. covs-5 are stampless FLs of which 1 is MSC DAVENPORT, NY (1817); 2 are PCs (1907 YOUNGS, NY & 1911 WHITMAN, NY); Others are mixed cond ENVs 1880s/1943!

106. 33 modern commercial covs w diff SLOGAN killers. Most have commems. All small F-VF ENVs....!!!

107. Cachet of PLANE in flight captioned 1941 AIRMAIL SERIES/FIRST DAY COVER--6c to 50c (except 3c) #C25/C31 6 VF addressed FDCs. Color of embossed cach matches that of stamp- 50c alone cats \$40.00...A hard to find lot.

108. 2 CANADIAN covs-1 has NEWFOUNDLAND #75a w ST. JOHNS CDS on VF ENV-other has BEAR RIVER (WEST SIDE)/MD94/N.S. in rimless CDS tying 3c orange Small Queen of CANADA F!

109. 4 ZEPPELIN related items-all w highly decorative cachets, all w GERMAN stamps inc 1 picturing LZ11900, ZEP, another w added HUNGARIAN Zep stamp-all w v fancy pictorial special cancellations. 1973/79 period. All VF

110. 5 ZEP related covs-2 w BRITISH stamps w v interesting illus cachets & illus fancy canc-1979 & 81--Other 3 are U.S. ENTs #U581 w paste on pictures of ZEPS & illus fancy canc. All VF!!!!

111. SWITZERLAND-Cacheted FDC of 1953 PRO JUVENTUTE set of 5. #s B227-B231 on VF addr-ENV

END OF SALE #80

DEADLINE FOR BIDS: July 15, 1994

**EMPIRE STATE
POSTAL HISTORY SOCIETY
373 Root Road
Ballston Spa, New York 12020-3227**

FIRST CLASS MAIL