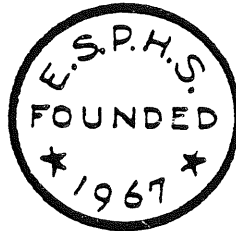


August 1983



EMPIRE STATE POSTAL HISTORY SOCIETY

August 1983

THE CONTINENTAL POST OFFICE AT FISHKILL -- 1777-1781(2)

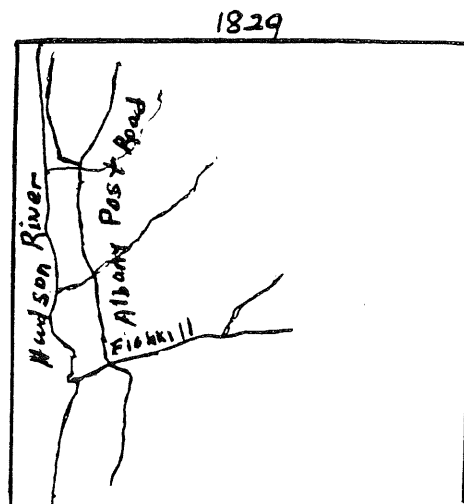
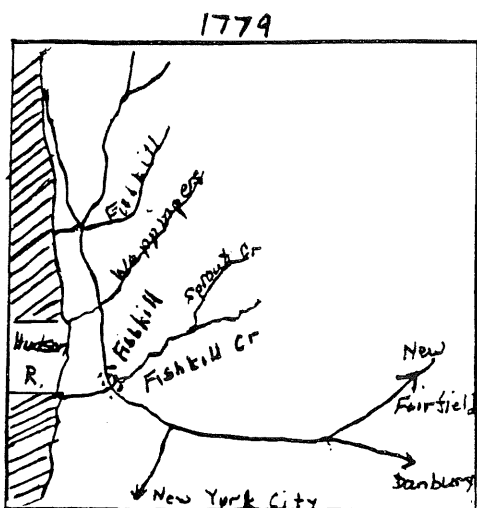
By Roy Ahlquist

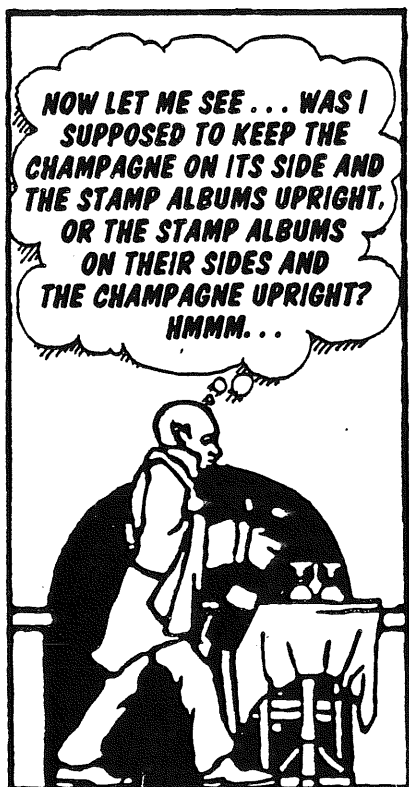
In a recent conversation someone quoted a philatelic writer as having said that you can write for years and all you ever hear is a silence in the void. Paraphrasing him further, he was attributed to have said, "Be thankful. It means that you are read, ignored or whatever else happens in the void, and it is accepted. But beware, one day you will drop a comma, and a flood of letters will arrive to point out where the comma belongs." Well, to date things have not been that bad. The responses were appreciated; however, I have not included this introduction here to solicit comment on past articles. What I am asking for is information to confirm, or refute the

thesis of this article which is that the post office at Fishkill did not begin as a planned continuous operation in 1777 as records seem to indicate. That, in deed, it was established at a date between 1782 and 1786. The information I have garnered is presented here, and you draw your own conclusions.

In 1777, Fishkill was a village of some fifty families who lived on the crude road called the Albany Post Road according to DeChastellux in his recordings. The main activity was farming though Stringham Iron Works, and two mills nearby are shown on the Sautier map (London 1779). Principally, the village was on the north shore of the Fishkill Creek 6.2 miles from the Hudson River where Fishkill Landing was. The creek would not be navigable by any but the smallest boat; consequently, Fishkill is essentially an inland settlement.

cont on page 6





Get a friend to join ESPHS.
You will be doing both your
friend & the Society a favor.
Send to us for applications.

THE BULLETIN
is published by the
EMPIRE STATE
POSTAL HISTORY SOCIETY

PO Box 5475
Albany, NY 12205

President.....Emma Koberg
Vice President....Kenneth deLisle
Secretary Treasurer..Maris Tirums
Bulletin Editor.....Jack Haefeli

direct all Society correspondence
to the Albany address printed above

Auction Manager.....George Bernadt
1470 Wyoming Av, Schenectady, NY 12308

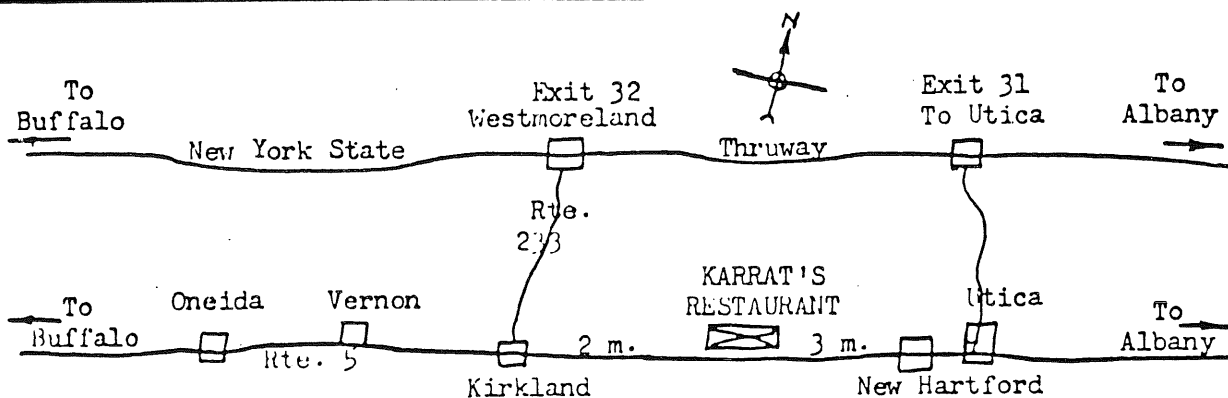
SEMI ANNUAL MEETING

Sunday, October 2, 1983

Karrat's Restaurant

BUY-SELL-TRADE-TALK

don't miss it - see map



People coming from the east will make better time getting off at Thruway
Exit 32 to avoid the City of Utica traffic.



NEW MEMBERS

We welcome the following postal history aficionados as the newest members in the ESPHS:

Gerald B. Austin
Jon Besante
William H. Conant
William E. Colangelo
Mark Grabowski
LaVern Johnson
Phil White

In accordance with Society by-laws, article 2, section 2, membership applications were posted in the June, 1983 Bulletin. Membership became official 30 days thereafter.

MEMBERSHIP CANDIDATES

I am pleased to post a number of new applications for membership in this edition. Applications have been received from:

Alderson, W. Paul
406 Roe Ave, Elmira, NY 14901
Interests: US; UN; FDC's - especially US 657 & C99-100; Local covers, postcards; Glider mail & cancels
References: APS

Deschl, Edward F.
136 78th St, North Bergen, NJ 07047
Interests: Dealer in postal history
References: Member David Proulx

Hazelton, Bruce W.
PO Box 67A, Cumberland Center, Maine 04021

Interests: Maine

References: APS

McCord, David R.
21056 N.E. 117th St, Redmond, Washington 98052

Interests: Postal history; Place names

References: Banking & business affiliations

Phillips, L. Gene
PO Box 224, Urbana, Ohio 43078

Interests: Dealer in postal history

References: APS

Salzer, Oscar
PO Box 36523, Los Angeles, CA 90036

Interests: US postal history

References: Member Thomas Alexander

Schmidt, James A.
Collector's Choice Ltd, PO Box 777, Nyack, NY 10960

Interests: Late 19th & early 20th century postal history; Dealer

References: APS

RESIGNATION

James Easton
364 E. Palmetto Pk Rd, Boca Raton, Florida 33423

Effective June 1, 1983

DEATH

The June, 1983 Bulletin mentioned the resignation of William J. Plaum from the ESPHS. Subsequently, we sadly learned of his death after a lengthy illness.

NEW BOARD MEMBER

Mr. Peter V.R. Mason of Preston, NY has been appointed to the Executive Board of the ESPHS. This appointment was made to fill the vacancy created by the resignation of Mr. Henry Chlanda. The appointment was overwhelmingly approved by the other Board members.

Mr. Mason is a teacher at the Mt. Upton Central School. He is married and the father of two. Thirtyfive years old, Mr. Mason has collected since childhood, and has as collecting interests the postal history of Chenango, Otsego, Madison, and Cortland Counties, U.S. airpost, Pitcairn and Norfolk Islands. His philatelic credentials include membership in APS, the Pitcairn Island Study Group, the UPSS, and in the ESPHS since December, 1977.

The Board is pleased that Mr. Mason accepted the appointment, and feels certain that he will be an asset to the Society.

ADDRESS CHANGES

New addresses are shown.

Klimley, Ronald J.
39 Gennis Drive, Rochester, NY 14625

Knowles, Dr. Daniel M.
97-10 71st Ave, Forest Hills, NY 11375

CORRECTIONS

The June, 1983 Bulletin included the membership application of William E. Colangelo (name misspelled as Conangelo).

The last edition of the membership roster lists Carroll, Daniel J. of Walton, NY. This should be Carroll, David.

Our apologies for these blunders.

NYS POSTAL HISTORY EXHIBITS AT FOPEX

FOPEX '83, sponsored by the Fort Orange Stamp Club of Albany, included five exhibits of NYS postal history. This strong showing of such material met the ESPHS criteria for an award.

All five exhibits of NYS material were by members of the ESPHS. These exhibits did quite well with the judges as they consisted of many fine items, and were well presented.

The five exhibits which qualified FOPEX '83 for the ESPHS Trophy, and the judging results were:

James R. Adams (The Development & Administration of the Postal System in New York State) won the ESPHS award for the best NYS postal history exhibit, a gold medal, & the FOPEX Grand Award.

John Lange (Saratoga County Stampless Covers) won a gold medal & the award for the best exhibit by a collector from the Capital District.

Emma Koberg (Wayne County, N.Y. State) won a bronze medal.

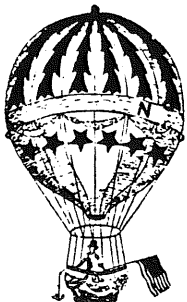
Thomas McGrath (Hudson River Steamboats) won a bronze medal.

William Seifert (R.F.D. Pencil Cancells) did not win an award, but nevertheless presented an interesting and unusual display of NYS rural route carrier pencil cancells.

Other ESPHS members also exhibited at FOPEX '83 with other types of material. Such exhibits were entered by ESPHS members Harry Sharbaugh (winner of the FOPEX Reserve Grand Award), Ken deLisle, Nettie Seifert, Glen Estus, and Dennis Mallory.

The ESPHS congratulates all of the exhibitors for their efforts and their success at FOPEX.

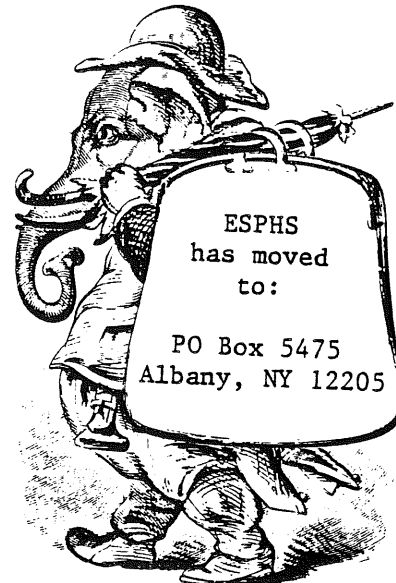
Maris Tirums (FOPEX Co-Chairman)



ALBANY, N. Y.

FOPEX '83

Get a friend to join ESPHS. You will be doing both your friend and the Society a favor. Send to us for applications.



Post Office Department
17 Oct 1823

Mitchell H Landon
Rome, N.Y. Sir,

I have yours of the 30th and its enclosures if as intimated in my letter to Mr. Hathway you will transport the mail in four horse stages or sleigh between Rome and Cato Four Corners once a week for four hundred dollars you can have a contract for the route. But I am not willing to supercede the present incumbent without some apparent advantage is to the public.

J. McLean

Post Office Department
26 Feb 1824

Oliver Phelps MC
Ithica, N.Y. Sir,

It is represented that mail remains all night at Roosas Tavern. If its Barroom should be robbed, the contractor would be liable for the loss. The mail must be kept in a locked room - that is when it is not in the custody of the driver.

J. McLean

Post Office Department
29th Oct 1823

W. Hitchcock, Esq.
PM Utica, N.Y. Sir,

Does Mrss Parker and Co send a mail stage via Sullivan, Fayetteville, Syracuse and if so mail for Syracuse should go from Albany by your office - will you favor me with a reply.

J. McLean

TRADING POST

NOTICE: Any member may run a **FREE** Trading POST ad of 25 words each year.

For Just \$1 an issue you can run other ads any time you like. For Postal History it would be hard to find a better readership! Send your ad in today!

WANTED - Early Florida covers. Especially need Seminole Agency stampless and U.S. #1. Herb McNeal, 520 Lakemont Av, So, Winter Park, FL 32792 2 (3)

PRE 1900 U S gazetteers and war books (WW I & II) for sale. Send SASE for list to Larry Cherns, P O Box 101, Thorold, Ontario, Canada, L2V 3Y7

IF you need ship covers - submarines - Polar covers - First day covers - Baseball cards - Write for "Tom's Sea Chest" Once a month. Thomas F McGrath, 804 Park Ave, Albany, NY, 12208. Send SASE for details.

- 1983 issue Official's -

Official Mail USA



WANTED

postally used sound adhesive stamps....
now paying:
50¢ of face - properly used on small (standard 6x) covers.
25¢ of face - properly used on large covers; or postal cards.
10¢ of face - off cover; or embossed (#10 business size) envelopes.
- premium for unusual usages -

BRAD ARCH
144 Hamilton Avenue CHfton NJ 07011

\$ any ¢
Penalty for private use \$300

WANTED: Saragoga County, NY stampless covers, particularly Ballston and Charlton ovals. No Saratoga Springs except very early or unusual usage. Phone 518-882-6373 or write John A Lange, Jr, Root Rd, RD #2, Ballston Spa, NY 12020

Get a friend to join ESPHS.
You will be doing both your friend & the Society a favor.
Send to us for applications.



UNCLE SAM STAMP

&
COIN CO

621 Third Avenue
Watervliet, NY 12189
Arnold Leiter - prop
Phone (518) 274-0994

SOMETHING FOR EVERY COLLECTOR

HONESTY AND REAL VALUES

10 - 6 Tues & Wed
10 - 8 Thur, Fri & Sat
closed Sunday & Monday

REMEMBER -- Always a 10% discount on all supplies to any ESPHS member



Turn your surplus PH material into CASH...send lots for our auctions to George Bernadt!!!



(cont from page 1)

Growth had been steady during the decade prior to the outbreak of the American Revolution. Smith (History of Dutchess County: 1683-1882) has an entry which notes that a Judge Smith had said in 1756 that the entire county of Dutchess (then including Putnam) could possibly muster 2,500 men, and that there were only two settlements which might be called villages, Fishkill and Poughkeepsie. The number of settlers seemed to have increased after 1765.

With this in mind, that is the small village located inland, and all maps of current times back to the 1829 map showing the Albany Post Road as essentially a north-south road, and that the 18th century was a time of travel by boat wherever possible, it seems unusual that a post office would be established here, and, more significantly, a main supply depot of the Continental Army. Several excellent port villages were located not too distant, and the danger there from British attack by river does not seem to be sufficient reason.

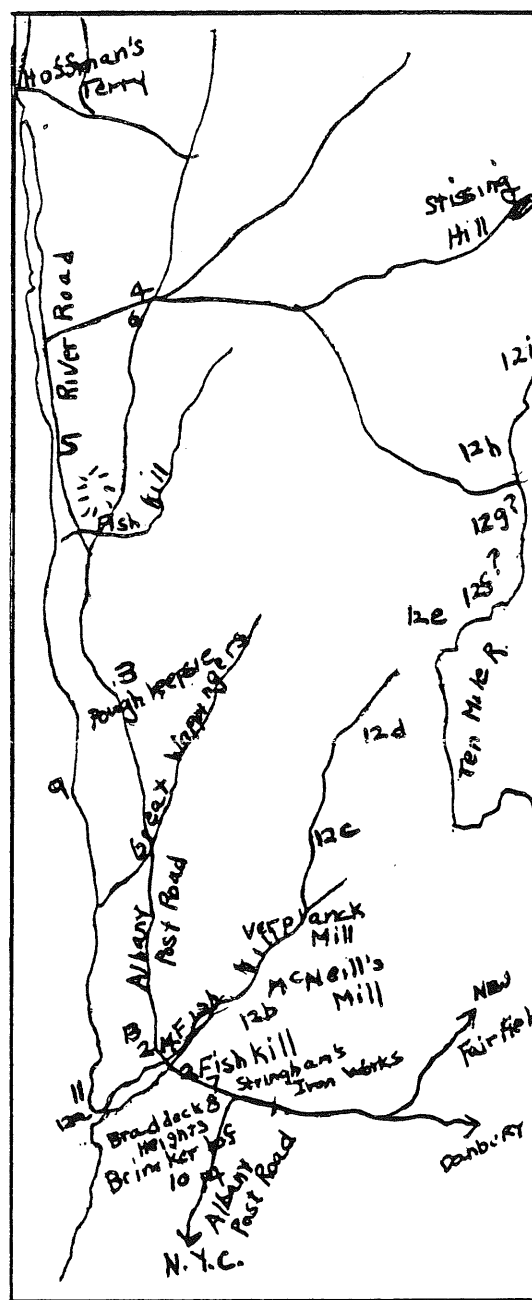
The Sautier map seems to offer the solution. Most readings of the period, but written after the period, indicate the importance of the Albany Post Road as the great connection between Albany and New York City as, indeed, such was the plan as early as 1702. However, the 18th Century map shows a different picture (assuming it to be accurate). The post road passes through what became Fishkill and turns east toward Danbury. Shortly southeast of Fishkill, the road from New York City joins in a "T" more as a feeder road than as the main road. It is not until some years later that the road to Danbury is no longer shown on the map, and the Albany Post Road has been rounded into a curve below Fishkill towards New York City.

Historically, deeds of the period do indicate large numbers of people coming in from Connecticut. This migration drops off by the turn of the century, and, possibly, because of the British withdrawal from the Connecticut Province which resulted in changes of religious persecution. Whatever the reason, the traffic pattern seems to have changed and the Hudson became more important. Seemingly, from that point on, the Post Road was a more important north-south highway,

Fishkill grew up around an intersection among the several cities in Connecticut to the east, Philadelphia to the West,

(cont on next page)

DUTCHESS COUNTY c. 1779



- 1 Col Griffin's Tavern
- 2 Mrs Egremont's Inn, Boerorn's Tavern
- 3 Pride's Tavern
- 4 Rhinebeck
- 5 Staatsburg, Strasbourg, Staatsboro
- 6 Thomas's Inn

- 7 Episcopal Church
- 8 Dutch Church
- 9 Milton Ferry (Barnegat, Clinton Point)
- 10 Two Forts (Wiccopee Pass)
- 11 Fishkill Landing Machine Works at
Freartown
- 12 Route of Hessians
 - a Fishkill Landing
 - b Fishkill Plains
 - c Arthursburgh
 - d Verbank
 - e Little Rest
 - f Mutton Hollow
 - g Plymouth Hill
 - h Dover Plains
 - i Sharon
- 13 Brinckerhof House
- 14 Van Wyck House (post office)

NOTES: Roads from Sautier map 1779

Road turned east at Fishkill.

Road split at Hyde Park - River Road
became railroad bed.

Albany to the north and New York City to
the south. This was probably the pic-
ture prior to the American Revolution.

When Lord Howe recaptured New York City,
it is reasonable that the depot and the
post office of New York City would be
located in Fishkill. It was the only lo-
cation with such diverse accesses. A
new location was necessary as New York
City was a major post town for both sides.
The British had removed the post office
to a ship in the harbor, and the con-
tinental post was rerouted by the Con-
tinental Congress in February, 1777,
which was to operate from Philadelphia
to Casco Bay (Falmouth) via Easton,
Fishkill, Hartford, Boston, and Ports-
mouth.

Further indications that the route was
an afterthought is shown in the Franklin
Ledger where three offices seem to have
been added as the hand and placement vary
from the others. These were Fishkill,
Little Rest, and Little River. The final
entry for the New York City Office was

May 7, 1777, and the first entry for
Fishkill was July 28, 1777. As New York
had been recaptured September 14, 1776,
the Franklin entry was essentially a book-
keeping entry, and seemingly there was no
New York City post office between Sept-
ember, 1776, and April 5, 1777, when
Samuel Loudon was appointed postmaster
at Fishkill. Shortly thereafter, April
25, 1777, Danbury was burned by General
Tryon, while shortly before the contin-
ental supply depot at Peekskill had been
destroyed. However, the post office was
established at Fishkill, but essentially
it was the continental post office of
New York City relocated. When we look
at the Franklin ledger, Fishkill car-
ries the third highest entries of all
the post offices.

Equally mysterious is why Samuel Loudon
was appointed the postmaster. In Thomas's
The History of Printing in America a brief
sketch of Samuel Loudon is given. He
was born in Ireland and grew up to be a
ship chandler. In 1775, he bought into
the printing business of Frederick
Shober, a German immigrant who learned
printing in Philadelphia. By mid 1775
Shober sold out to Loudon (The situation
seemingly was getting too hot for Shober).
However, before Schober's retirement, he
and Loudon published the New York Packet,
and The American Advertiser, both of
which first appeared in January 1776,
and later were published on and off in
Fishkill. Before September 1776, Loudon
left New York City and went to Fishkill.

In addition to Loudon, Ebenezer Hazard
retreated to Fishkill. Hazard had been
the New York Postmaster, but chose to be-
come surveyor of the northern posts.
John Holt also departed New York City and
went to Poughkeepsie. Ter Braake notes
that Holt was a continental postmaster
in New York City in some type of private,
or contract endeavor which I do not un-
derstand. Nevertheless, Holt was a post-
master and a printer with more experience
than Loudon. It seems curious that Lou-
don should have been chosen for the pos-
ition.

The post office at Fishkill was located
in at least two sites according to
Smith's History. For a while it was at
the Van Wyck house where officers seem-
ingly below the rank of general were
also quartered. A second location cited
was in a house which in the 1880's was a
grocery store operated by a Jarvis W.
Cary. The former house still standing.

Cont on next page

A brief history taken in part from Houses of Dutchess County, notes that the house was built in 1735 by Cornelius Van Wyck. He died (1761) and passed the house on to his son, Cornelius, Jr. Six years later, he passed away and the property was divided between two sons. Isaac Van Wyck gained the house, and his brother a section of the land. The latter built a house on his portion of the property in 1790 so the post office must have been located at the home of Isaac Van Wyck.

It is interesting to note that the troops bivouacked on the farm and that for years later, as the land was tilled, revolutionary artifacts (trash of the soldiers) kept being unearthed. Even today, several groups are digging for artifacts. De Chastellux noted that there were troops along the roads living in makeshift houses covered with loose boards. The exact number of troops seemingly is questionable. Quotes seen range from over 1,00 to over 2,00. To say the least, there were enough to disrupt the life of the small village of Fishkill.

This leads to another mystery. Ter Braake notes that covers passing through the Fishkill post office are common, and, in terms of Revolutionary covers, that is reasonable for it was on the only northern route. However, neither Ter Braake or Sampson note any covers from Fishkill. The only reference to a cover from the Fishkill Post Office during these years was in Smith's history where a reference is made from "a letter dated Fishkill October 30, 1777."

Not only were there troops stationed here, but Washington stayed at the Brinckerhof House located "at the confluence of Sprout and Fishkill Creek" in a rear room; Anthony Wayne stayed at Fishkill Landing in the spring of 1779, and Lafayette was quartered at the Wharton House, made famous by Cooper in The Spy. Who has a Fishkill cover between 1777 and 1781?

Indications are that the post office at Fishkill was removed to New York City after the British evacuated in 1781. There are several indications of this. Loudon returned to New York where he continued to print his paper along with a number of books. Also, in 1782, when the postal laws were codified, New York State had only one inland post office and that was at Albany. The function of the continental post office at Fishkill was to maintain the postal service from

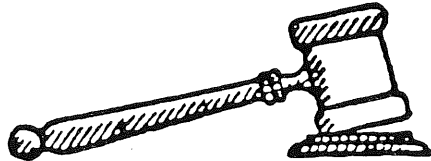
the north and the south. With New York again safe, Fishkill was no longer needed. However, by 1786 the Fishkill Post Office does seem to exist because it is cited in the early Gazeteer of New York State, and other sources as one of the three post offices in the county. The other two, Rhinebeck, and Poughkeepsie were established April 5, 1786. It is probable that Fishkill was also established on that date, but as a stop on the new postal route, the Albany Post Road route. Further, it would seem to be another type of post office, one of lesser significance.

The gauntlet has been thrown down. Who can produce a copy of a Fishkill cover between 1782 and 1786? I feel confident the editor will publish any comments or findings relating to this thesis.

BIBLIOGRAPHY

- Franklin, Benjamin, The Ledger of Doctor Benjamin Franklin, Washington, D.C. 1865 (reprinted Historic Documents Publ. Co., N.J.)
- Kay and Smith, New York Postal History: The Post Offices and First Postmasters from 1775 to 1980, A.P.S. Handbook, 1982.
- Reynolds, Helen, Dutch Houses in the Hudson Valley Before 1776, Dover Publications, New York, 1965 (reprint of 1929 edition)
- Rich, Wesley E., The History of the United States Post Office to the Year 1929, Harvard University Press, 1924 (Quarterman reprint)
- Sampson, E.N., American Stampless Cover Catalog, David Phillips Publ., 1978
- Spafford, H.G., Gazeteer of the State of New York, reprinted Heart of the Lakes Publishing, 1981
- Smith, James, History of Dutchess County: 1683-1882, D. Mason & Co., Syracuse, 1882 (reprinted Heart of the Lakes publishing, 1980)
- Ter Braake, Alex L., The Posted Letter in Colonial and Revolutionary America: 1628-1790, American Philatelic Research Library, 1975
- Thomas, Isaiah, The History of Printing in America, Weathervane Books, New York, 1970

Auction Action



Auction Manager.....George Bernadt
1470 Wyoming Av, Schenectady, NY 12308

The prices realized for the last sale
(sale #29) will appear in the next issue.

This is necessary due to the irregular
time of the last issue plus George's well
deserved vacation.

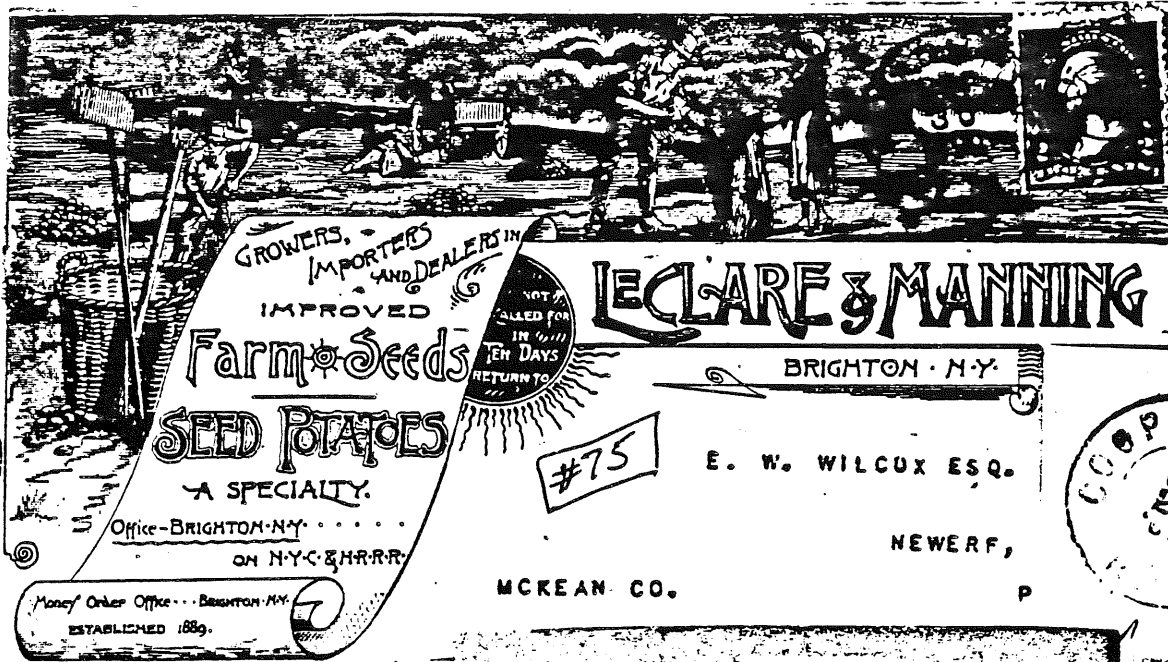
SALE #30

Deadline for bids on this
sale is September 23, 1983

1. WHITEHALL/Jul(mcs6)NY- in orange 31x11 mm box
with msc 10 on F somewhat stained FLS(1833)
2. ESPERANCE/AUG 2 -24x8 brown(oxidized or?) ARC
with msc 183/4 on F, slightly aged, 1838 FLS.
P Own. Est. \$50.00.
3. WATERTOWN/*N.Y.*-in 27mm CDS, N.O.R.- with msc
20 on F(aged with minor stains) 1810 FLS. P
O.E. \$30.00.
4. 2 diff. BUFFALO DODS-1)BUFFALO/JUNE9 N.Y. in
blue 31x23mm DODS on file folded 1837 FLS
with msc 50-2) BUFFALO/NO27/ N.Y. (san-serif
letters) in blue 30x23 DODS on file-folded
1837 FLS. Both VF.
5. SANDY-HILL/D/+N.Y.+ -in red 27x23mm dotted ODS
with HS PAID & msc 10 on F+(ff) 1844 FLS.
6. CANAAN 4 CORNERS/4 AUG/N.Y. -in slightly blur-
red 31mm orange CDS with HS PAID/3-in-circle
on F slightly aged ENV. NYD.
7. CAZEN4 N.Y/APR21 -in 32mm CDS with HS PAID-in-
ribbon & msc 10 on VF 1841 FLS.
8. CLYDE/SEPT27 182/N.Y.-in 32mm CDS with HS 10-
in-circle on F slightly stained 1859 ENV..
To CANADA.
9. COLD SPRINGS/FEB28/N.Y.-in bold 35mm CDS with
HS 5 on F slightly worn ENV--NYD.

10. CORTLAND VILLAGE/JUN7/N.Y.-in clear orang 30mm
CDS with msc 183/4 on F slightly worn 1842 FLS.
11. 2-FISHKILL/D/4.N.Y(NY fancy)-in clear 30mm orange
CDSs with msc 10-1 has HS PAID- on F(still
file-folded) 1838 FLSs!!!!
12. Faint-FORT ANN/D/N.Y.-in red 30mm CDS with msc
5 on F slightly aged 1846 FLS.
13. GENESEO/OCT28/N.Y.(NY inve#) in bright green P
32m CDS(slightly off at bottom eliminating P
"N" only) & msc 183/4 on F(still as originally
file folded) 1837 FLS. Contents-printed form.
14. JAMESTN/JUN17/N.Y(NY invert.) in lt. but legible
CDS with msc 12+ on VF 1836 FLS.
15. LANSINGBURGH/D/N.Y. in or-red 30m CDS with msc
183/4 on F(still as orig. file-folded)1837FLS.
16. LOWVILLE/FEB10/N.Y. in red 30m CDS with HS 5
on F(ffs) 1848 FLS.
17. MALONE/12 OCT/N.Y. in red 29m CDS with msc 10
on F(ffs) 1847 FLS.
18. 2 F+ FLSs-still file-folded-1.MANLIUS NY/APR10
in clear 32m CDS with msc Paid 6 on slightly
worn 1835 FLS. 2.-PETERBORO/DEC9/N.Y. on Or-
ange 30m CDS with msc 10 on F 1843 FLS.
19. MONTICELLO/JUN20/N.Y. in 34m CDS with HS 5 on
F, somewhat stained ENV--Has contents.
20. MILLPORT/JAN27/N.Y. in clear 32m CDS with HS
PAID 3 on F ENV.
21. POKEEPSIE N.Y./3 Dec/5CTS- in BOLD red 35m CDS
on F slightly aged ENV.Has Cont. SCARCE!!!
UNUSUAL SPELLING!!!! P
22. SAG HARBOR/NOV15/N.Y. in clear orange 30m CDS
with msc DROP 2 on F++ 1849 FLS. Scarce!!
23. SCOTTSVILLE/SEP16/N.Y. in red 30m CDS with HS
PAID & msc 25 -on F+ 1844 FLS.
24. 2- TROY.N.Y./D/3 PAID -in clear 32m CDSs-1 or-
ange(1855)-1 blue(1853) on F FLSs.
25. WILLIAMSBURG/MAY1/N.Y.-in clear lt. green 29m
CDSwith HS PAID 3 on VF neat 1840 ENV. Has
contents--UNLIT color!!
26. WYOMING/JUNE17/N.Y(ORK removed) in clear 30m P
CDS & msc 6 on F somewhat aged 1837 FLS!!!!
27. 3 items-1. NEW PALTZ/D/NY in or. 33m CDS with
HS 5-2) SENECA-FALLS/D/N.Y. in or. 29m CDS
with HS 5 & 3). WATERLOO/D/N.Y. in 30m blue
CDS with HS 5--All are FRONTS only and are
addressed to ACORD, ULSTER CO. NY.
28. BROWNSVILLE NY/MAY12 & Paid 181--All in MSC on
F(minor closed tears), 1821 FLS- Nice!
29. MSC-EAST WORCESTER/March 30 1841 & Paid 183/4
PLUS 27m CDS NEW-YORK/APR2 & addressed to
IRLAND on soiled & worn FLS-breaks at folds.
Very unusual with MSC TMK on letter addr over-
seas. Has LIVERPOOL/SHIP LETTER & 2 other
clear overseas HSs on reverse... P
30. MSC- HOLLAND PATENT/MAY28 NY & 5 on VF 1854
ENV...Has interesting contents!
31. MSC-LIVINGSTON NY/15 July & 6 on F 1828 FLS...
32. MSC- MANCHESTER BRIDGE/Nov28th & Paid 3 on
somewhat worn 1848 FLS. SCARCE!!! P
33. MSC-2 covs.-both NEW HAVEN NY/date--1 has msc
183/4 on VF 1845 FLS-other has msc 5 on F
1851 ENV(small tear at right not into mks)
34. MSC- SPRINGWATER NY Feb16 & Paid 5 on F+(ff)
1850 FLS--Neat!!
35. MSC- SUFFOLK C H/May 30th & 10(latter crossed
out & 12 substituted) on this forwarded cov.
Also has red 30m NEW-YORK/MAY31- all on VF
1845 FLS. V. NICE!!!
36. MSC- FREE D BEECHER PM/SULLIVAN- on VF(fr)1815
FLS- Cont re: relief of settlers on the
ONEIDA RESERVATION, etc.!!!!
37. BINGHAMTON/APR16/N.Y.-33m CDS ties #11--ALSO
has msc Forwarded/Due 3 & CDS of BERRIEN
SPRINGS, MICH.All on F, orange ENV. NICE!!

38. Blue 32m CDS-EASTERN/FEB25/R.R.(latter invert) tying 3 marg #11 to F+(ffs) FLS...
39. MSC- SO GRANVILLE NY/Feb26 & pen-canc. 4 MARG. #11 on VF yel ENV.-Cont dated 1856...
Scarce and attractive!!!
40. MSC- WEST STEPHENTOWN/NY Aug8,1856 & pen-canc. almost 4 marg. #11 on F ENV....
41. MSC- MARGARETTEVILLE,NY/May20 -with better than Ave #11, pen-canc. on F+ nicely embossed Lady's ENV. Addr to TROUT CREEK,DEL CO. NICE!!
42. MSC- FOR'D FROM/NORTH BERGEN NY/Jul8 & 3¢ due on F ENV with #11 tied by clear 30m N.Y. CDS. (Corner of stamp folded back BEFORE being canceled so receive part of CDS on back of stamp.) V.V. UNUSUAL!!!
43. CHAPPAQUA/AUG1/NY(Last "A" of CHAPPAQUA small & high) in 30m CDS tying #26 to VF ENV--EARLY!!
44. MSC- OHIO NY.Sep6 6¢ & pen-canc #26(Late use of this stamp)on F+ ENV----DPO...
45. PINE PLAINS/MAY4/N.Y. in 32m s.o.n. CDS tying #26 to VF, neat yellow ENV.
46. RONDOUT/JUL17 1861/N.Y. in 25m DCDS with s.o.n. targ kil with #26 on VF ENV addr."Camp of 20th Regt NYSM/Baltimore,Md/Lieut Lewis MCENTEE/CO. H--Cont v. long,int. let. A nice CIVIL WAR it.
47. MSC- MT VERNON NY NOV 28- Addr to UNADILLA/FORKS OTSEGO CO/NY- PO est 1851--so v early use- on slightly aged #09 ENT..
48. MSC- PHILAD NY/Jan23 1855(PHILADELPHIA,NY) on #U10 ENT. (Small rubbed spot at center--still a very nice JEFFERSON CO item!!
49. MSC- WADING RIVER/N.Y. Mar 15th- on F+ #U6 ENT. SCARCE ENTIRE with nice SUFFOLK CO. msc E.\$20.
50. 2 covs with #65s-1.has cc-STATE OF MAINE./HEAD-QUARTERS,/ADJUTANT GENERAL'S OFFICE,(fancy letters)/AUGUSTA,ME. & DCDS-of AUGUSTA & tied by unusual grill kil.,dock. 1865 on ENV(VF) 2)has 2 #65s each tied by a BOLD 7 barred kil. with GALLIPOLIS/OCT5 1863/O DCDS & 2nd with same DCDS dated OCT 16,1863--all on F yel ENV---A v. unusual item!!
51. MSC- FLUVANNA NY/June 22 & pen-canc #65 on VF small ENV..
52. 2 covs- 1has #65 tied by s.o.n. MEXICO,N.Y CDS on VF yel ENV with embossed cc--other has #94 with tar. kil. FORT MILLER,NY CDS on small somewhat soiled ENV..
53. MSC- HANFORDS LANDING/Jan6 NY with #65 & CDS- of CEDAR FALLS,IOWA on small ENV with stain along edge away from mks. Has long letter datelined GREECE Jan 4 1863. A v. scarce MONROE CO. item!!
54. MSC- NEW CENTREVILLE/May26 1865- with pen-canc. #94 on F slightly aged yel ENV-DPO.
55. #94 tied by CDS-NEW-YORK/DEC18/1:30 PM & cork kil.(v. early use of time in CDS) on small neat VF ENV...
56. #65 tied by Encircled STAR on VF yel ENV with red ROXBURY,Ms. CDS..
57. Ave. #65 tied by tar. kil. with VAN VECHTEN, NY, CDS on somewhat soiled ENV.-Dock. on face.
58. 2 covs- #94 with tar kil & CDS CARLISLE,NY.. 2-Has #65 with tar kil & DCDS-WHITESTONE, NY--both on slightly aged ENVs...
59. 2 VERMONT covs- -with #65s-1 has MSC-GRANBY,Vt May7 1867- pen-canc.--other has blue CDS WAITSFIELD,VT.& blue grill kil. Both on F slightly aged ENVs....
60. COOPERSTOWN/OCT26 '68/NY -in 29m DCDS with bold, FANCY 9 pointed STAR on VF 3¢ pink 1865 ENT.-#U59. RARE!!! F Own. EST.\$35.
61. Blue tar kil & CDS of PENN YAN,NY on VF,neat 3¢ pink ENT.-#U59 on Patent env. ENT.!!
62. 2 covs-#U58 & #U59-1st has SL PAID as kil & CDS of HADLEY,Ms. 2nd has STAR kil & CDS of PRATT'S JUNCTION,MASS.--Both are VF ENTs.
63. #114 tied by huge "K" to VF ENV with BRISTOL, R.I. CDS-Stamp oc with SE---SKIMMER & EMO P #LS-K4---A very attractive & scarce item!!
64. #114-VF centering with tar kil & CDS of ABECK-P MAINTOWN,NY on VF slightly aged ENV.O.E.\$15.
65. MSC- GLEN AUBREY N.Y./April23/70 & pen-canc. #114 on VF,slightly soiled ENV. BCCM CO.
66. BRIGHTON/AUG23 1888/NY ties 1¢ BN to some- what soiled ENV with cc-w.S.LITTLE etc.. Cont-long price list--MONROE CO DPO!!
67. 1¢ blue & 2¢ orange BNs on VF ENV with HAWLEY- TON,N.Y. CDS. Stamps overlap slightly. Nice.
68. LANSINGBURGH/fancy scrollwork/NOV 1 1878/NEW YORK/fancy scrollwork- in 32m CDS with SHADED STAR-INT-CIRCLE kil tyin 1¢ blue BN to scarce type ENT #U147--BOSTON CARRIER CDS on reverse. A V. UNUSUAL item!!
69. 3¢ gr BN tied by dark brown tar kil with LIVON- IA STATION,NY-CDS to F,decorative(flying Dove with ribbon which forms addr. lines) Also, a 2nd item--a 1939 3¢ ENT with MOUNT MORRIS HOSPITAL RURAL STA. CDS on VF ENT..
70. Blue 31x23m DODS-IRONDALE N.Y./JAN17/DUTCHESS CO. WITH 3¢ GR BN(minor faults) tied by magenta tar kil to F ENV with cc-MILLERTON IRON CO. etc.--Top of DODS is partially misse- ingdue to thickness of orig. cont. elimin- ating much of "IRONDALE"--A RARE item..
71. MORRISANIA/DEC21 2 PM/N.Y. CITY CDS & 3¢ gr BN with lg barred(Vert) Oval kil on F+ ENV..
72. RICHMOND MILLS/JAN8/N.Y.- CDS & tar kil tying 2¢ gr BN to VF ENV- Has fancy LIVONIA STAT- ION,NY Rec. mark on reverse..
73. Strip of 3-1¢ BNs(barely canc.) & MSC- WILL- ISTON,12/31/NY on slightly aged & stained ENV. An ERIE CO. item!!
74. 2 items with MULTI-COMBINATION BNs & int.CCs- 1st.-Strip of 3 3¢gr BNs + 1¢ br BN(dam) + 2¢ br BN on F legal size 6¢ #U181 ENT.with fancy cc- STATE OF NEVADA/EXECUTIVE DEPT- & CARSON CITY CDS + REGISTERED in SL--2. 2¢ orange BN + 3¢ gr BN + 10¢br BN on somewhat aged & foxed legal size 6¢ #U181 with HS RETURN struck several times*PORTLAND,OR. CDS.
75. BEAUTIFUL ADV. cov--Lg,almost overall picture P of farmers working in Potato Field,horses, cart, etc.--with LE CLARE & MANNING/BRIGHTON, NY. ETC.ETC.- Has #219D tied by BRIGHTON CDS.
76. 2 covs with SPECIAL DEL.stamps- 1-#E5 tied by SANDY HILL,NY CDS(1990). 2.-#E9 tied by BUF- FALO,NY 1916 CDS with illus.cc pictureing 3 STATLER HOTELS. Also has SCRANTON & NORTH RR/ T.716 in CDS on reverse-both have 2¢ red st- amps-all on slightly aged ENVs. V. nice items.
77. F 2¢gr#273 tied to F+ENV by ITASKA/Feb16,1897/ NY CDS & REGISTERED NO. in lilac SL +44446 in violet + int. REG. HS on reverse.BROOME CO.
78. Lovely,clear,Lilac DLDCDS of CAMERON,NY & out- lined MALTESE CROSS kil on F #UX5 PC.STRIKEING!
79. 2 early PCs- 1.Lilac OCTAGONAL 1880 CDS-MOSCOW/ NY on F #UX5-2J X-Border item with CHATHAM,NY CDS+CDS of TORONTO,ONT.--all on face of aged #UX7 (1885).....
80. MISSENT TO FLUSHING,NY. SL HS tying 1¢ gr WASH. HEAD + FLUSHING CDS & CDS-FALL RIVER,MASS(1912) on VF Xmas card. UNUSUAL!!!!
81. BROWNSVILLE & OLIVER/APR1\$ 1911 TR33/RPO- on VF ppc. A v. nice R.R. item!!!
82. ROCKLET/JAN11 AM 1909/N.Y.-ties #300 to F ppc photo of OLD LADIES HOME-MIDDLETOWN,NY.
83. HS-POUGHQUAG,N.Y./JUN10 1933-CDS with attached 4 bar kil tying 1½¢ Harding to XF ENV...
84. MSC 2 on F 1849 FLS datelined HAMILTON, Canada from where it was hand carried & dropped in PO at OSWEGO,NY.
85. HS-SHIP & CDS-BOSTON,MS(both red) with msc p2/4 & 20+ on v. aged & stained FLS datelined ENG..

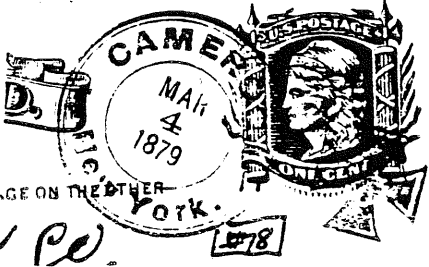


GROWERS, IMPORTERS AND DEALERS IN
IMPROVED
Farm Seeds
SEED POTATOES
A SPECIALTY.
Office - BRIGHTON - N.Y.
ON N.Y.C. & H.R.R.
Money Order Office - Brighton - N.Y.
ESTABLISHED 1889.

LECLARE & MANNING
BRIGHTON - N.Y.
E. W. WILCOX ESQ.
NEWERF,
MCKEAN CO.

#75

NOT CALLED FOR
IN TEN DAYS
RETURN TO

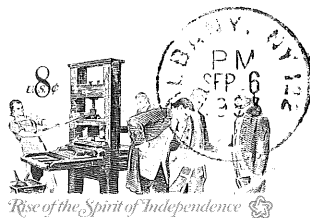


86. NEW ORLEANS/JUN22/La- in 30 m CDS with HS PAID & huge 10 + foriegn mkggs with msc "By the steamer from NY to Liverpool"-on F+1848 FLS...
87. 3 BROOKLYN,NY covs- 1).-BROOKLYN,/FEB8/N-Y. in red 30m CDS with HS 5 on F(ff)1847 FLS--2).-3gr BN with 1877 BROOKLYN CDS on VF ENV... 3).-BROOKLYN,N.Y. Sta B-CDS & Oval kil. tying 2c TRAN-MISS.#286 to F sm. ENV. ANICE LOT!!
88. 3 FORT EDWARD,NY items-1 has Ave #11, 2nd also has Ave #11- both tied by 32m CDS(latter is LADY'S ENV)-3rd has #94 tied by tar kil & DCDS to F ENV.
89. 5 WASHINGTON CO. items-1.has #65 with SANDY HILL,NY CDS on F ENV.2.-SANDY HILL CDS of 1892 on 2c gr ENT-3.&4. have SHUSHAN,NY CDSS of 1909 on ppcs & 5.-CDS-SMITHS BASIN,NY CDS of 1907 on ppc showing Photo TRUTHVILLE,NY..
- 90.3 covs-1).-3gr BN tied by JAMESTOWN,NY CDS on VF ENV with 3cbr POST. DUE Stamp. 2).-3gr BN tied by Lilac-WARSAW,/NEW YORK+ in DCDS & faint MALTESE CROSS to F+ ENV.3).-2cbr BN tied by Lilac WARSAW,NY-CDS & STAR-CF ENV..
91. 4 WASH. CO. covs-(3 REG.)- 1.NORTH GAGE,NY-CDS (DPO) with 10cgr #273 1896 ENV.-2.SOUTH CAMBRIDGE,NY with 1898 CDS & 8c #272 +2c #267 on F slightly aged ENV-3.WHYTEHALL,NY CDS with #273 on F REG. ENV-4.HARTFORD,NY CDS with 3c gr BN on F ENV..
92. 3 GRANVILLE,NY items-1.GRANVILLE/6APRIL/N.Y.- in clear blue 30m CDS with msc 10 on F+1849 FLS 2.Sm. CDS with #65 on F slightly aged ENV.& 3. Sm. CDS tying 3cgr BN to VF Yel ENV.A NICE LOT!
93. 3 BN covs- 1.3cgr with STILLWATER,NY CDS on VF ENV-2.3cgr tied by DCDS-PAINTED POST,NY to F ENV. 3.2cbr with HAVANA,NY CDS & cc of COOK ACADEMY,(in fancy let.)/HAVANA,NY./AC. HILL, PRINCIPAL- on F ENV....
94. 3 covs.-1.#65 tied by CDS-MONGAUP VALLEY,NY to F 1869 ENV. 2.MAHOPAC FALLS,NY in blue 1884 CDS with 2cbr BN on F ENV- 3.WARWICK,NY CDS & 3cgr BN on VF ENV.....
95. 3 items- 1. 10cbr BN & 3cgr BN on VF Reg. ENV with SPRINGFIELD CENTRE,NY CDS.-2.3cgr BN on VF ENV with AMENIA,NY CDS &-3.2cbr BN on VF ENV with PRESTON HOLLOW,NY CDS----V.F. LOT!!
96. 4 F-VF 2cbr ENTs of 1883- 1.Has blue THREE MILE BAY CDS with bold STAR kil--others-DEPOSIT,NY, WEEDSPORT,NY & NORTHVILLE,NY...
97. 4 items-1.NEW-YORK/AUG31/PAID 3Cts-in bold red 31m CDS on slightly aged 1853 ENV-2.3cgr BN tied by lg neg. 5(in solid circle)& NEW YORK CDS to F+ENV. 3.2c #286 tied by YONKERS,NY 18 98 CDS to F+ ENV. 4.VF ENV with printed sketch of ROBERT FULTON in cc of FULTON TRUST CO. & CDS-HUD. TERM. STA.-of 1921...
98. 10 diff. Pre-stamp covs. still in original filing form-F-VF with clear strikes--Noticed-LANSINGBURH; POUGHKEEPSIE; CAMBRIDGE; KEESEVILLE; etc-Msc rates- a couple with HS PAIDs- 1837-38 period---A VERY NICE LOT!!!!
99. 40+ NYS FLSs, mostly in orig. filing form-various cond. of covs & strikes--SEEN-NYC DROP let--- several clear to bold TROY,NY covs.-- Nice CAMBRIDGE,NY--several NYC--ELMIRA etc.etc.
100. 1869 ROMAN STATES 10c orange perf. stamp with SE & DCDS- ROMA on F+ FLS. Unusual!!!

End of Sale

Deadline for bids on this sale is September 23, 1983

Empire State Postal History Soc
P O Box 5475
Albany, NY 12205



FIRST CLASS MAIL