

BULLETIN OF THE

EMPIRE STATE POSTAL HISTORY SOCIETY

December 1980

December 1980

POSTAL HISTORY OF THE
TOWN OF GUILDERLAND
ALBANY COUNTY, N.Y.S.

By Arthur B Gregg Sr
Guilderland Town Historian

This is a condensation of a series of articles that appeared in the Altamont Enterprise Newspaper, in 1977, an Albany County weekly newspaper.

The Town of Guilderland is one of nine (9) towns that makeup Albany County. It is a diamond shaped area of approx 36,000 acres, adjacent to the City of Albany, on its western side. The Town was organized from a section of the old Town of Watervliet, on Feb 26, 1803. (The Town of Watervliet, by name no longer exists.)

The entire Town of Guilderland, initially belonged to the great Manor of Rensselaerwyck. This large land holding included most of what is now Albany County (less Albany City); and across the Hudson River to the east, most of Rensselaer County and some of Columbia County. This land patent holding persisted into the 1880's, long after other patents or grants in New York State had been dissolved. In fact, the Van Rensselaer patent continued to show back rents due, on isolated property sales, as late as the 1930's in Albany County!

The first Post Road through the Town was authorized in April of 1810. It started in Albany, passing over the newly constructed (1804) 52 miles of the Great Western Turnpike and terminated at Aurora, N.Y. The Western Turnpike name is used, even today, by many. It threads through the Town for the first 13 miles. A second Post Road was authorized in March of 1815. It started at Hamiltonville (now Guilderland Village) following the old Schoharie Road over the Helderberg Mountains to Berneville, on to Schoharie Court House, then to Cobleskill, Maryland and Milford.

As a result of this 2nd Post Road, the first official post office in the Town was established on Nov 11, 1815 at Hamiltonville, however, the post office name at this place was designated Guilderland after the new town name.

Another 14 years would pass before the population increase could support another post office at West Guilderland (now Altamont), followed approx a year later by a post office at Guilderland Center. Ultimately, there would be seven (7) post offices operating at the same time. This occurred during the period from 1872 to 1905, namely Guilderland, West Guilderland (Knowersville, Altamont), Guilderland Center, McKownville, Dunnsville, Fuller's Station (Fuller's) and Guilderland Station (Meadowdale). Ironically, today there remains but three (3) independent offices - namely the original three (3) established. The others were discontinued as additional rural free delivery routes were established.

With that summary, lets review briefly conditions in upper New York State starting in 1783, when hostilities had ceased between the Colonials and the British. According to A F Harlow, in his book "Old Post Bags", he states: "In 1783 western New York State was just as wild as the Ohio Country and beyond. There were no settlements of any consequence west of Albany"

Albany County, Rensselaer County and Columbia County were slow to develop, due in a large measure to the huge land holdings of the Van Rensselaer family and their technique of leasing land and seldom selling. Bear in mind, there were a few scattered farms established as leased property as far back as 1740. But potential farmers and cottage industry artisans who were seeking a new start, would look else where, I'm sure, before being enticed to sign an everlasting contract for payment of rent. On the other hand some potential farmers who lacked the funds or credit to acquire farm land now could realize this ambition.

Let us go back to the beginnings of this tiny hamlet, that would become the Guilderland Post Office. But for the fortuitous decision by the Albany Glass Company in 1785 to establish a new glass works, Guilderland as a community, at this location probably would not exist.

One naturally wonders why they chose for their project a location then almost a wilderness. It was two miles distant from the highway connecting Albany and Schenectady. The Great Western Turnpike through the community would not be completed for another 19 years. There was, however, quantities of sand, waterpower from the Hungerkill, and plenty of wood for the furnaces, and we are aware that potash, used in glass making, could be produced from selected native timber.

PRESIDENT'S

MESSAGE

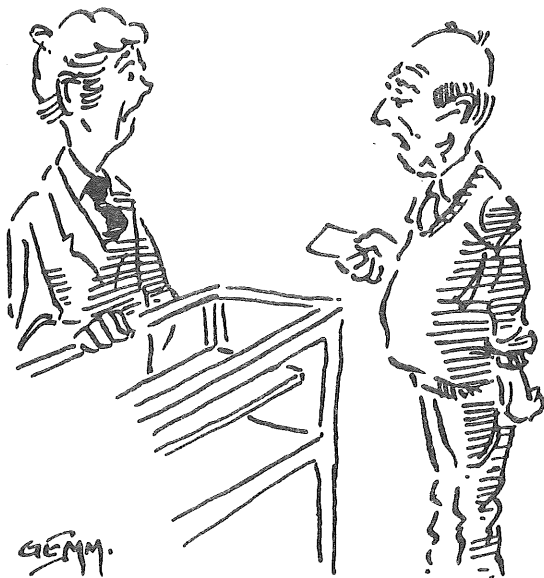


Congratulations to all our members who won Awards in CINCOPEX 80. Keep on submitting exhibits of New York Postal History. It promotes both ESPHS and the society holding the Exhibition.

Have received information that our Library is not being utilized. For the past year, there hasn't been a single request. The Society budgets \$50 a year to but publications. Why buy books to put in storage? Would appreciate any suggestions from members. Take time out to write your opinions to Dave Prosser, Librarian. If the inactivity continues, perhaps we should consider abandoning the Library.

As 1980 draws to a close. I want to express my thanks to the officers and members for their cooperation and support during the year.

BEST WISHES FOR HAPPY HOLIDAY SEASON!



I have a 15 cent stamp here with no perforations, no gum, no color, no value & no issuing nation. In fact it's completely blank. What's it worth?

THE BULLETIN

is published by the

EMPIRE STATE

POSTAL HISTORY SOCIETY

P O Box 8684, Academy Sta
Albany, New York 12208

APS affiliate 28
annual dues \$5.00

President.....Emma Koberg
Vice President.....Clifford Tuttle
Secretary Treasurer.....Kenneth deLisle
Bulletin editor.....Jack Haefeli

direct all Society correspondence
to the Albany address printed above

Auction Manager.....George Bernadt
1470 Wyoming Av, Schenectady, NY 12308

Librarian.....David Prosser
7664 State St Rd, Watertown, NY 13601

DELAWARE COUNTY

H S COVER STUDY

So far, the response to our request for Xerox's &/or accurate descriptions of any Del Co HS Stampless covers has been very disappointing. 3 of the specialists in that county (Taber, Hulbert & Karlson) have helped a lot & have offered to help more. Only they & J P Van Buskirk, have bothered to send data.

We would appreciate hearing from the specialist in DELHI covers---& what about those of us who collect the whole State and must surely have some Del Co covers? Even specialists in other parts of our State may have one or more such covers.

If the response so far is indicative of the cooperation we can expect on the updating of the next edition of the ASCC, then believe me, it is certainly not worth the time & effort which must be devoted to it & we fear the project must be abandoned! A sad commentary on the spirit of our organization. /gb



We welcome to membership Joseph Rhatigan, Eugene E. Schrier and Dr. John Billington Ludin, whose applications were posted in the October Bulletin.

The following have applied for admission:
von Hake, Joseph

Faupack, PA. 18451

References: None required (APS #073374)
Interests: Postal History - Preadhesive mail rates, styles; ship and packet mail.

HILBING, FRANCIS J. (Jack)

380 Indian Hill Drive, Buffalo Grove, IL 60090

References: None required (APS #086469)
Interests: Oneida Co. (NY) stampless; Adams Co. (Ill.) postal history; Illinois postal history; stampless covers, USA, GB.

MAREK, STEPHEN P.

624 Hull Terrace, Apt. 3-S
Evanston, IL 60202

References: None required (APS #099994)
Interests: DEALER - - Stampless covers, postal markings to 1900.

NYE, MRS. ANN L.

R.D. #1, E. Homer Road
Cortland, N.Y. 13045

References: Citizens Savings Bank, Ithaca;
Interests: French, Japanese and U.S.A. stamps; New York and New Mexico postmarks.

RESIGNATIONS: We make note of the following resignations because of changed interest.
EDWARD J. ROSS, Granite Springs, N.Y. and
RUSSELL A. RIELLE, Canastota, N.Y.

Please make change of address notes to your roster for: PAUL E. CACCHIONE, now residing 305 Scott Avenue, Syracuse, N.Y. 13224

We regret to do so, but our By-Laws require us to remove from the rolls all members whose dues are in arrears, after first mailing a notice to each by first class mail. Accordingly, we drop effective November 1, these names:

Richard Avon; John Azarkevich; Harry Burgess; Richard Carter; David Buxbaum; Charles Chernoff; John Gunderson; Mary Anne T. Sommo; Warren Stevens; Richard Wadsworth; David Wasserman.

With this month's plus and minus adjustments, our paid-up membership stands at 163, with 3 pending.

TREASURER'S REPORT

Five months ending September 30, 1980

BALANCE ON HAND APRIL 30/80 \$ 5,706.92

Revenues:

Dues	\$404.00	
Sale of Publics	90.50	
Auction Comm.	92.74	
Advertising	10.00	
Interest Earned	204.70	801.94
		\$ 6,508.86

Disbursements:

Bulletin, printing and postage	\$331.49	
Public Expense	16.06	
Administration	35.78	
Publicity and Membership Committee	68.10	451.43
		\$ 6,057.43

BALANCE ON HAND SEPT. 30/80

Bank balances, Sept. 30/80: Checking, Savings and Time Deposits \$6,057.43

The above report, in much more detail, was presented at the Executive Board meeting on October 5, 1980, discussed and unanimously approved.

At this meeting the 1980 - 1981 budget was presented to the Board by the Finance Committee, discussed and unanimously adopted. It was estimated we would have in revenues \$1,245.00; expenses were estimated at \$1,145.00; surplus \$100.00 for the year. It is likely the surplus will be in excess of the estimated figure, due to sales from publication inventory which cannot with any certainty be predicted.

MANUSCRIPT POST OFFICES

Our 1973 publication, listing the known and reported offices using, at one time or another, a manuscript identification rather than the conventional handstamp, remains the only published source of information.

We have published an annual supplement, six in all to 1979 and the publication committee plans on another for this year. The supplement lists all newly reported offices and any additions or corrections to previously published data.

Our stock is down to 25 copies and we urge all our members who do not own a copy to purchase one before this small number is exhausted.

Cost of the 41-page publication, plus six 2-page annual supplements is \$3.50 postpaid to members, \$5.00 postpaid to non-members.

SHOW TIME

If you have information of suitable shows please contact the editor for inclusion in future columns. Considerable lead time is necessary for publication...particularly if members are to have the opportunity to exhibit. Your cooperation will be appreciated.

Feb 6-8, 1981

Buffalo

Hamilton-Buffalo Reunion & Stamp Exhibition, Holiday Inn, 1881 Niagara Falls Blvd. Buffalo Stamp Club, 411 Lamarck Dr, Buffalo NY 14225. Competitive exhibit, show cancel. Fri 12-9, Sat 10-9, Sun 10-5. Free Adm.

March 13-15, 1981

Rochester

ROPEX 81, Americana of Rochester Hotel, 70 State St, Rochester Philatelic Asso, Box 3806, Brighton Sta, Rochester, NY 14610. Competitive exhibition, bourse, postal agencies, club meetings.

FOPEX 81

Apr 10-12, 1981

ALBANY

to be held again at the Empire State Plaza. Prospectus will be sent for a #10 SASE sent to: FOPEX 81, PO Box 5102, Albany, NY 12205. Plan to exhibit at this show!!

Verpex 81 May 16, 1981 Montpelier, Vt

National Life Insurance Co Bldg. Washington County Stamp Club & Vermont Philatelic Soc. Competitive exhibition, bourse, & slide shows. Write Verpex 81, 4 Langdon St, Montpelier, Vt 05602.

TONY ZAHM WINS BIG

Anton H Zahm's exhibit titled "Australia - The Definitive Issues During the Reign of King George V" took top honors at the Sept 5-7 INDYPEX in Indianapolis, Ind. Zahm received the Grand Award, the American Philatelic Society Medal, the Soc of Australian Specialists/Oceania First Medal, and a gold award.

This was won against very stiff competition and Tony is to be heartily congratulated!!

THANK YOU - CLIFF TUTTLE

The following letter was received by Cliff Tuttle on behalf of the ESPHS from the Community Stamp Club in Sherrill, NY:

Dear Cliff,

We wish to thank you and the Empire State Postal History Society for the fine cooperation and help that you and your organization gave our CINCOPEX-80 Stamp Show.

We also want to thank you and the Society for the fine awards that you donated to our show.

There is no doubt but that Postal History is becoming more and more popular, as was shown by the many fine exhibits in that category in our show. Your organization must have a strong hand in increasing the popularity of this branch of philately.

We wish your society the greatest of success and want to thank you again for helping make our show, and all CINCOPEX shows, the finest annual stamp exhibition in the Central NY area.

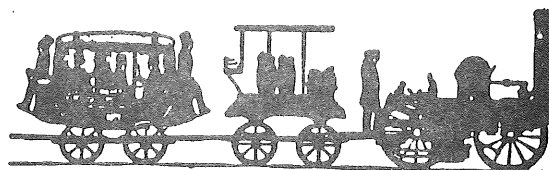
Sincerely
Don Connelly, Secretary
Community Stamp Club
Awards Chmn, CINCOPEX-80

FOPEX 81

APRIL 10, 11 & 12

PLAN NOW TO EXHIBIT

Prospectus available
at meetings or for a
#10 SASE. Do it now



WANTED

Request any member who has good cancellations or unusual markings of villages located in Wayne County to send reproductions - not originals to Chester Wilcox RD 1 Box 113, Richford, N Y 13835. Early material preferred. Material needed for Postal History of Wayne County, presently being compiled by ESPHS.

AGATHERIN' STOCKS, IN ADDITION TO PHILATELIC PERIODICALS AND HANDBOOKS, NON-PHILATELIC MATERIALS ABOUT THE US POSTAL SERVICE. HERE IS A LIST OF SOME BOOK TITLES THAT WE ALMOST ALWAYS HAVE ON HAND, WITH A PRICE RANGE REFLECTING CONDITION AND EDITION. ALL COPIES WILL BE TEXTUALLY COMPLETE, BUT THE LOWER PRICED EXAMPLES OF THE 19TH CENTURY BOOKS MAY HAVE SUBSTANTIAL DEFECTS IN BINDING. WE WILL BE GLAD TO SHIP AND BILL FOR THE TITLES YOU WANT; BUT PLEASE INDICATE IF YOU PREFER OR REQUIRE A PARTICULAR CONDITION OR EDITION.

Ten Years Among the Mail Bags or Notes from the Diary of a Special Agent of the Post Office Department. J. Holbrook. editions 1855/1888 \$25/40
Besides detailing the exploits of Holbrook, this also contains 'capsule biographies' of the PMG and supplementary material on post office laws and practice. The 1888 edition omits a section on laws and another on 'improved mail case'.

Guarding the Mails or the Secret Service of the Post Office Department. Being a record of Mail Robberies and their Detection. P.H. Woodward. editions 1876/1886 \$20/35
 1971 reprint, new \$35
The 1971 Reprint was taken from one of the later editions re-entitled "The Secret Service of the Post Office Department" with an additional 17 page chapter on the Star Route Frauds and a reworked conclusion.

The Story of Our Post Office. Marshall Cushing. Boston, 1893 1034 pp. \$25/40
A proud book, heavy with illustration and anecdote of "The Greatest Government Department in all its Phases".

United States Postal Policy. Clyde Kelly. 321 pp. with index. editions 1931/1935 \$10/15
The philosophy of the postal service in its evolution. Contains a day-by-day calendar of postal progress. "June 8, 1872 - Post Office Establishment first recognized as a department in Act of Congress."

Mailman USA. William C. Doherty. 308 pp. with index. NY 1960 \$10/15
The letter carrier and the postal service and labour legislation.

The United States Postal Service. Gerald Cullinan. editions 1968/1973 \$10/15
This is a volume in the Praeger Library of U.S. Government Departments and Agencies. The dustjacket of the 1973 edition (completely revised from the 1968 edition) calls it: "a lively account of the history, politics, and operations of the American postal establishment."

GOVERNMENT PUBLICATIONS

Postal Laws and Regulations:	1879	434 pp	\$35/55
	1887	597	35/50
	1893	526	30/45
	1902	772	30/45
	1913	816	25/35

During this period, these are the only complete compilations of the postal laws and regulations published.

Street Directory of the Principal Cities of the United States embracing Letter-Carrier Offices Established to April, 1908. Wash., 1908. 904 pp \$15/30
Useful for determining the city and state of destination from an incomplete address.

*WE ALSO HAVE POSTAL GUIDES, REPORTS OF THE POSTMASTERS GENERAL, OFFICIAL REGISTERS AND MISCELLANEOUS DOCUMENTS.

*SEND US YOUR WANTS. AGATHERIN', P.O. Box 175, WYNANTSKILL, NY 12198

(cont from page 1)

This business group named their new project the Dovesburg Glass Works, and immediately enlisted 25 artisans from Germany, who, with their families, were brought to the area within the year 1785. Housing for these families was erected nearby, soon after the first few buildings of the glass factory were completed.

We now had a hamlet, named "Dovesburgh" or "Dovesborough", estimated to be some 150 souls. These families required essentials such as food and dry goods from the Company store, a place to worship, and last but not least, to ease the pangs of home sickness, a mail service to keep in touch with loved ones and friends back in Germany or possibly other east coast immigrants like themselves in New York City or Philadelphia. There was a U.S. post office in Albany (Est 1/5/1776) which served Albany and the adjoining towns such as Schenectady and Greenbush but also Orange and Dutchess Counties, Cherry Valley, Pleasant Valley (wherever that was?) and Vermont.

With such a large territory, it was difficult to alert recipients that their mail lay in the Albany post office. Mail not called for after 3 months was advertised in the local paper on three successive periods of time (ie once each week) hoping the addressee would be found. All mail was C.O.D., thus the addressee paid for the letter. For those displaced Germans in Dovesburg, it was a sacrifice of nearly a day's pay to receive a three sheet folded letter from Germany in 1792. Understandably, it didn't occur often but by comparison, our present domestic 15 cent or 31 cent overseas postage rate is a real bargain.

Unfortunately, the Dovesburg Glass Works went under and the Hamilton Manufacturing Society took over or reorganized the business in 1797. The hamlet was now known as Hamiltonville. By 1813, the community contained 56 houses occupied by laborers employed in the glass business. However, 11 years later in 1824, hard times fell on the domestic bottle and window glass business, due in part to lower import tariffs, allowing the English to undersell these small enterprises. Although there were some inns, like Sloan's that were able to weather the storm, the Glass Works was out of business and the population had decreased considerably.

The Albany post office was too remote to provide regional service and too expensive, thus private or informal postal services sprang up, usually between tavern owners and stage drivers, as was the pattern elsewhere in this young United States. McKown's Tavern at McKownville, Sloan's Hotel at Hamiltonville, Mynderse's Tavern at Guilderland Center and Severson's Tavern at West

Guilderland; all served as "Posting Places" for delivery and pickup of newspapers and messages for those settlers willing to strike a bargain with the Innkeepers. The early tavern was the center of life, outside of the local church, where local court convened, polling and meetings were held, advertisements posted as well as the letter exchange (See Figures #1 and #2)

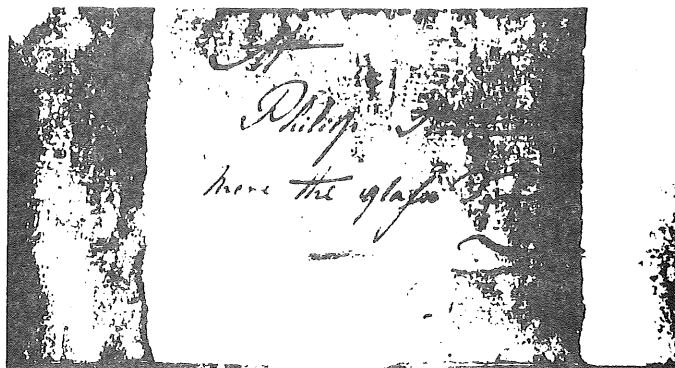


Figure #1

Letter addressed to Philip Streit, near the Glass Factory. Most likely that letter was carried by Stage from Broom County, traveling part way over the Western Turnpike to Hamiltonville and left at the local hotel (Sloan's), five years before a post office in the Town was established.

West Guilderland post office, the 2nd P.O. in the Town (now in the incorporated village of Altamont) was established on Dec 24, 1829. The post office was located in the Severson Tavern and George Severson, the Innkeeper, was its first Postmaster. Had the setting been outside the influence of the ever present patrol of all Albany County, the post office name might have been called Severson's Tavern, where it was common for frontier settlements to name the post office after the Inn Keeper.

The net yearly receipts at the West Guilderland post office were never large enough to justify its operation. In the fiscal year ending Sept 30, 1830 for instance, the Postmaster returned to the U.S. Government \$1.23. I suspect that the incoming correspondence of the Luthern Minister, The Rev. Adam Crounse, which has recently surfaced, was the main source of revenue. In 1840 the post office was moved to a more central location and the name changed to Knowersville, after a successful Albany Hatmaker, the late Benj. Knower. The new location was 1 mile to the east of the Severson Tavern, known today as the "Old Village". This new settlement was becoming a more active business center.

(cont on page 7)

(cont from page 6)

In 1862 the Albany and Susquehanna Railroad Company was rapidly constructing its line from Albany to Binghamton, passing through what is now the business section of Altamont. By 1863 the R.R. was completed as far as Central Bridge. A new R.R. Depot named Knowersville came into being almost in the front yard of the old Severson Tavern. This construction caused a magic like growth of the village near the depot. Therefore, on April 6, 1864 the post office was moved "up town" again.

In the early part of 1887, agitation arose to change the post office name again. Knowersville was so similar to Knowlesville, in Orleans County, N.Y.S. that much mail intended for the one place went to the other, making a delay in many instances. This was no exaggeration for in a find of several hundred letters of the 1870's and 1880's many of them had been previously sent to Knowlesville. The post office name, the Railroad Station and the Village were all ultimately to become Altamont. But what a bizarre series of events! Knowersville post office was changed to Altamont post office on August 19, 1887 which would normally close the issue. On October 15, 1887 there was a special hearing before a regional post office agent. Mr. John Knower, a descendant of Benj. Knower, had influence with the Government, and was able to open up the question. On October 22, 1887, an order came out rescinding the post office name of Altamont. The new post office name, by this order, will be knower, effective January 1, 1888. Now comes women's lib, about 90 years ahead of time! The real story behind the final adoption of the name is told on authority of the late Mr. Frank Lape, of Altamont, who know the situation intimately. It seems that during the close of the controversy, when the Knower interest seemed to have control, Mrs. Wm. Cassidy took an interest in the affair. She had a home on the mountains above Knowersville. She was the widow of Wm. R. Cassidy, who had had great power in the Democratic party in the 1870's. Closely associated with Mr. Cassidy was Daniel Manning, the man who was responsible for the nomination to the presidency in 1884 of Grover Cleveland. Grover Cleveland was no stranger to Mrs. Cassidy's estate on the mountains, the hospitality of which he frequently enjoyed while he was governor of the state. Her influence with him from both political and personal reasons can well be understood. There came a hurried request to the President from Mrs. Cassidy. Said Grover Cleveland: "If Mrs. Cassidy is interested in having that post office named Altamont, Altamont it shall be!!" On November 17, 1887 a new order rescinded the name Knower, and the new post office name of Altamont continued in effect.

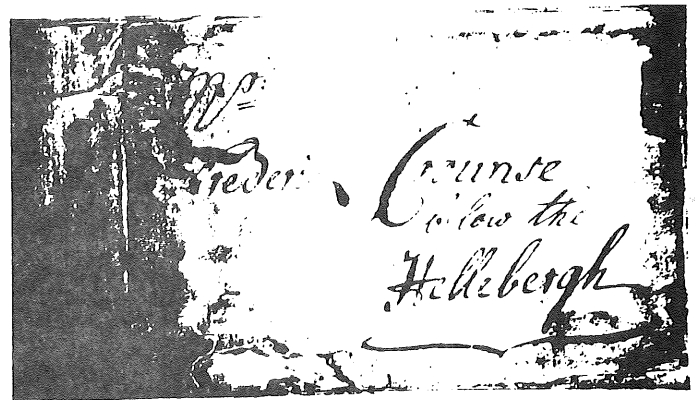


Figure #2

Letter delivered to the Severson Tavern for Fredrick Crounse below the Hellebergh. Message from Beaver Dam Settlement (near Berne) delivered 32 years before the Post Office was established here.

The 3rd post office to be established in the Town was Guilderland Center, located equidistant between Guilderland P.O. and West Guilderland P.O. on the Old Schoharie Road (now Rte. 146). It was established on April 6, 1831, with Elijah Chesbro as the 1st appointed Postmaster.

A hamlet started to form at the present site of Guilderland Center around 1800. We are aware the Town did not incorporate until 1803, thus the name Guilderland was not known until then. N.V. Mynderse built his hotel at this location (now known as the Frederick House) in 1802 and most likely this attracted others, particularly business men who sensed an era of prosperity in the wind and found choice building lots up and down the Old Schoharie Road, at this point. Indeed it was the geographic center of the new incorporated town and was becoming the political and business center after the decline of the glass industry.

Whatever Guilderland Center had as nicknames before or after the town was incorporated, the one that has stuck down through the years was "Bang-all". As Katherine Van Epps said in her article in the Knickerbocker News of Feb. 6, 1950: "The origin of the name is not certain but in the old days when the village of Guilderland was called Glass House, nobody except the U.S. postal officials talked about Guilderland Center - it was always Bang-all". No doubt, drink dispensed at the hotel and saloon bars caused all the trouble, fights and brawls were common place.

(cont on page 8)

(cont from page 7)

The 4th and 5th post offices to be established in the Town were Dunnsville and McKownville. Both were on the Western Turnpike, with Dunnsville on the extreme western edge of the Town and McKownville on the extreme eastern edge, adjacent to the City of Albany boundary.

Dunnsville was named for Christopher Dunn, who established a tavern by the side of the turnpike in 1800. The post office was established on March 7, 1833, with John Gaskin as the 1st Postmaster. Whether the name Dunnsville was used extensively by the settlers before 1833 as the post office name became, is not known, but like "Bangall" for Guilderland Center, Dunnsville was called "Hardscrabble" in that early period as a nickname. So it goes, some of the male inhabitants had hard scrabbling to get home after a visit to one or more of its three (3) taverns.

McKownville was named for William McKown, who was aware the new Western Turnpike was being laid out and in early 1796 built an enormous tavern on what is now the site of King's 'Shell Gas Station', opposite the Fuller Road exit. The post office was established on Jan 7, 1862 and James F. McKown, the grandson of old Billy, became the 1st Postmaster. Unfortunately, McKownville post office was the 1st office to be discontinued (on July 15, 1905).

The 6th and 7th (the last) post offices to be established in the Town were Guilderland Station (Meadowdale) and Fuller's Station (Fuller's). Railroads were responsible for both. With the completion of the Albany and Susquehanna Railroad (later the D & H) in 1863, Guilderland Station post office was soon to open. The Hudson and Saratoga Railroad (later the West Shore) completed in 1865 made possible the opening of the Fuller's Station post office.

The U.S. Congress, to its credit, was always quick to establish railroad lines as official post roads, as each line became dependable. Rail line postal delivery in its day was the ultimate mode. Not only did Guilderland Station and Fuller's Station become post offices, as a result of railroad post roads, but Knowersville (Altamont) on the A & S and Guilderland Center on the H & S began to receive most of their out-of-town mail, newspapers and packages by rail.

Guilderland Station (Meadowdale) was established on August 15, 1864 with Geo. W. Mackasney as the 1st Postmaster. Although no established settlement existed at the time, this train stop was the gateway to the Helderberg Mountains for summer vacationers. This new approach for vacationing in the Helderbergs and surrounding country side obviously initiated a desire

to send letters describing their experiences and to receive mail and newspapers from home (no postcards until 1873). We must assume the Post Office was established, at the on-set, for summer visitor convenience. As the A & S R.R. added more locals between Albany and Delanson, stops at Guilderland Station became more frequent. Some new families, who may have been summer visitors, became residents, the bread winner, commuting by train to the city. In any event the post office now had a volume of business to justify its existence the year around.

Fuller's Station post office was established Sept. 25, 1872, with Wm. Clapper as the 1st Postmaster. A small community did exist at this location on the turnpike as early as 1800, coincident with the opening of this new toll road. Atavern run by Peter Trebor was the nucleus. Not until the early 1820's did Major John Fuller more to the community with his new bride. He purchased the tavern from the Trebor family and continued to run a prosperous tavern, as well as raise a family of nine children. In any event, the community became known as "Fuller's". Fuller's Station post office was the first of the Town of Guilderland's post offices to have rural free delivery (R.F.D.) from its office, serving areas in nearby Schenectady County.

THE END



UNCLE SAM STAMP

&
COIN CO

621 Third Avenue
Watervliet, NY 12189
Arnold Leiter - prop
Phone (518) 274-0994

SOMETHING FOR EVERY COLLECTOR

HONESTY AND REAL VALUES

10 - 6 Tues & Wed
10 - 8 Thur, Fri & Sat
closed Sunday & Monday

REMEMBER -- Always a 10% discount
on all supplies to any ESPHS member

LET'S GET ACQUAINTED



How well do you know these members of our Society? Here is a little information about them you may not know. Continuing in the next issues we will have information on some more of our members for you.

KENNETH R deLISLE

Ken lives in Albany but is originally from Ottawa, Canada. He admits being over 65 and with wife Peg have three children. Ken was the Albany NY Water Commissioner. He is a charter member of ESPHS, has been a director and is now the Secty-Treasurer. Ken has been collecting since 1926 but is now phasing out of collecting to spend more time in research and occasional writing. He has been selling his own collection and that of estates placed in his hands for liquidation. Ken has been a Fort Orange (Albany) Stamp Club member for over 30 years. He is Section Editor of the US Philatelic Classics Soc, and APS National level accredited judge, founding member of the Amer Phil Research Library, a former director at large of the American Philatelic Society, has served 8 years as trustee of APRL, and was on the Philatelic Advisory Committee of the XIII Winter Olympics, although he claims none of this is out of the ordinary!

ROBERT K WAITE SR

Bob lives in North Adams Mass, but claims to be originally from three places: Holyoke, Mass, NYC & Chicago. He is in his seventies, and with wife May have a child and 7 grandchildren, 5 thru adoption. Bob graduated from Holyoke High School in '26 where he was school auctioneer. He spent two years in Tank School at Fort Knox in WWII. He has had too many occupations to list but now owns Peebles Jewel Shop in North Adams. He is a director of the ESPHS. Bob has been collecting since 1919 and specializes in World #1's on and off cover and anything else he likes. He is a member of the Holyoke, Brattleboro, Adams, Williamstown, and Pittsfield Stamp Clubs besides being a member of RPSC, VPS, Conn, Mass, & Ohio PHS, and the Western Cover Soc. He claims to be a vest pocket dealer but it is difficult to imagine vest pockets that large. He has been a member of the Holyoke club since 1920 and a licensed auctioneer since 1946. Bob will talk stamps at the drop of a hat even if you have no hat to drop. Just ask!

ARTHUR B GREGG JR

Art, who is about 60, is from Altamont but now lives in Radnor, Pa. He and his wife Hazel have one child. He graduated from RPI in '42 and was an Officer with the Chemical War Service in WWII. He is now an engineer with GE in Philadelphia, Pa. Art has been collecting covers since 1968 and has been an ESPHS member for about 10 yrs. Art collects Albany County, Hudson River Mail, and the east counties of Penna. besides being an APS member Art is a charter member and a director of the Pa Postal History Society.



NOTICE - Your board of directors has authorized the Bulletin to run for any member a free 25 word ad in the Trading Post. This is only for "wanted" "trade" etc. No "for sale" ads allowed. Each member is allowed one free ad a year. You may, of course, run any type ad or additional ads upon paying the regular one dollar fee. For your convenience an adv coupon has been included with this Bulletin. We hope that everyone will take advantage of this service offered by your society.

New Jersey covers WANTED: Stampless thru WWI and all DPO's. I have over 1000 similar New York State covers available for trade. Correspondence invited: Brad Arch, PO Box A, New Vernon, NJ 07976

WANTED: All Suffolk County NY postal history items - stampless thru modern - including Long Island Railroad covers, Daniel Knowles, 39 E 12th St, Apt 303, New York, NY 10003.

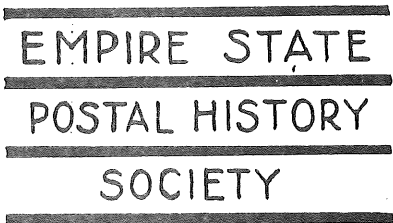
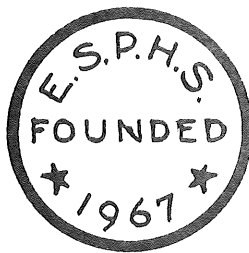
The editor regrets that he lost a paid ad sent in since the last issue. If that person will please resubmit the copy we will run the ad in the next issue and an additional time as a form of apology!



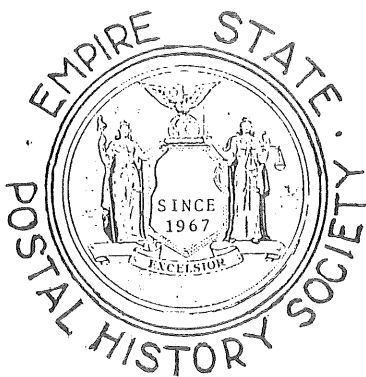
page 10



LOGO #1



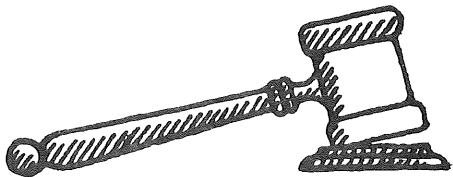
LOGO #2



LOGO #3

Illustrated here you see three proposed logos for the ESPHS. We expect that one, or some variation, will be selected for use in the Bulletin masthead. Your preference &/or comments would be much appreciated. Just send your selection or comments to the editor. Thank you!

Auction Action



Auction Manager.....George Bernadt
1470 Wyoming Av, Schenectady, NY 12308

PRICES REALIZED - SALE #13

1	\$8.50	17	\$6.00	32	\$4.50	47A	\$2.50
2	15.50	18	26.00	33	6.00	48	7.00
3	9.00	19	13.00	34	10.00	49	3.25
4	6.00	20	6.00	35	8.50	50	2.25
5	22.00	21	26.00	36	9.00	51	2.75
6	6.00	22	2.25	37	15.50	52	8.50
7	8.00	23	3.00	38	14.50	53	2.00
8	41.00	24	4.50	39	9.50	54	4.50
9	20.00	25	16.00	40	3.75	55	4.50
10	13.00	26	4.00	41	4.00	56	5.00
11	5.00	27	5.00	42	16.00	57	6.00
12	7.00	28	26.00	43	14.00	58	2.00
13	23.00	29	10.50	44	6.50	59	1.50
14	42.00	30	11.50	45	2.00	60	4.50
15	20.00	31	9.50	46	1.50	61	4.50
16	37.00	31A	10.00	47	4.00	62	4.50

Total Sale \$656.25

WE STILL NEED GOOD MATERIAL FOR FUTURE SALES.
LET'S KEEP THEM UP!!!!!!!

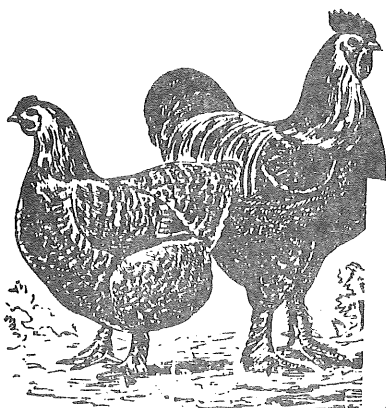
REMEMBER - Xerox illus show lovely yellows, greens, etc, as dirty gray. Same is true of almost all other than white ENVs.

MAIL BIDS EARLY - Deadline for bids on sale #14 is Dec 26, 1980

SALE #14

- 1 (1800) CLAMSHELL fancy oval-NEW YORK/Apr 30 - (type I) with msc 34 rate (2x17) & "p. mail"- Has lg emblematic WMK-VF(ffs) Int. cont. FLS
- 2 (1802) CLAMSHELL fancy oval-NEW YORK/Mar 1- (type I) with HS PAID & msc 17--WMK CRISPIE & NEWMAN--VF(ffs) FLS. Int. cont.

If not called for in Ten Days, return to



GEO. D. STOCKWELL
Lake Chemose Farms, East Eddington, Me.
Breeder of
All the leading varieties of Land and Water
and Fancy Pigeons.
Agent for "The Poultry World"

#52

#36

CAN WE BREAK THE C...



THE
FRANKLIN SOCIETY



No. 1 BEEKMAN STREET,
MANHATTAN, N. Y. C.

#67

B. Duane, D.D.
H. DAVIS,
LAND AGENT
AND
LUMBER DEALER
NORTH LAWRENCE, N.Y.
P.M. RETURN IF NOT DELIVERED

#44

AUG 15

August
Free -

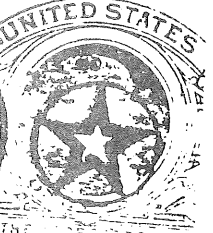
#21

Mr. John
a Revolutionary

S. GREEN
MANUFACTURER OF
STRAW & MANURE FORKS
Hoes, &c. &c. A.
LEONARDVILLE, MADISON N.Y.

#43

#47



#70

- 3 AUBURN/NOV/*N.Y.* in red 33x29mm serrated ODS with msc 12(double rate) & 874 (chg # ?) F(ffs) some minor stains- 1834 FLS.
- 4 Light LOCKPORT/OCT 1/→N.Y.→ in red 32x23DODS with msc 10-F slightly wrinkled 1831 FLS.
- 5 V. light LOCKPORT/JUNE 1/→N.Y.→ in red 32 x 23 mm DODS with msc 37½ & HS PAID, also 57/paid (chg # ?) F slightly aged FLS-1832.
- 6 WEST LODI/JAN 15/ N.Y. (NY small) in BOLD 31x24 mm DODS with msc 6 on very brittle FLS badly broken at folds & addr faded almost out. No cont. A scarce item--. ASCC \$80.00--Own Est \$35.
- 7 PALMYRA/MAY 2/NEW-YORK in red 32x21mm ODS on F (ffs) 1831 FLS--Cont.--WAYNE CO. BANK statement. Own. Est. \$7.50
- 8 FANCY-WATERTOWN/FEB 12/NY (NY, in FANCY solid rectangle, is neg.) Magenta with HS PAID & msc 18+ On F(ff) 1830 FLS. Unusual!
- 9 TURNED COV.-1st side-clear HAMILTON/SEP 3/N.Y. & HS PAID with HS 5-in-a-box & msc "please foward" --2nd side-faint CLOCKVILLE/msc Sep 5/N.Y. with HS PAID 5-All on VF ENV. Nice!
- 9A CANANDAIGUA (in italics)/FEB 8/N.Y. in 23mm CDS which is slightly off at left so that C of CANAN. & N of NY are missing. Has msc 18+ on F(ff) 1824 FLS. Partial contents.
- 10 ITHACA/msc Dec 3 in v. faint but legible CDS with N.O.R. & msc 18+ on VF(ffs) 1827 FLS. Should have been double rate since \$ bill incl! \$40.
- 11 ITHACA/OCT 15/ NY (NY inverted) I of Ithaca partial-in 36mm CDS with HS PAID(small) & msc 56½(triple rate). Also, msc Paid Box no. 91 on VF 1830 FLS. Cont. about becoming agent for Hartford Ins Co Lg WMK.
- 12 WILLIAMSVILLE/MAY 4/N.Y. in 33mm CDS with HS PAID & msc 3-Dock. 1852-VF ENV. No contents.
- 13 COLD SPRING/JUN 15/N.Y. in bold 35mm CDS with HS PAID/3-in-circle on somewhat aged ENV. O.Est \$15.
- 14 SPRINGVILLE N.Y./JUNE 23/msc 3/PAID on F+ Env. Own Est \$7.00
- 15 LOCKPORT/MAY 26/N.Y. in blue 25mm CDS with msc chg 183/4--dock. 1828-docketting slightly into strike, on VF FLS. WMK O&H. Own Est \$15.
- 16 ONEIDA DEPOT/MAY 10/N.Y. in GREEN 33mm CDS with HS 5-in-circle on VF FLS with cont. datelined Verona, 1849.
- 17 MORRISANIA (sans serif letters)/OCT 12/N.Y. in blue 31mm CDS with HS PAID/3-in-circle. Also has partial CDS of Pittsfield, Mass. apparently used as recieving mark-unusual. VF FLS datelined 1852.
- 18 CASTLETON/JAN 27/Vt. in GREEN 30mm CDS with HS circled 5. VF 1846 FLS.
- 19 RONDOUT/JUL 28/N.Y. in 31mm CDS with HS 5. Cont. Printed, illus. Bill of Lading & Reciept of D&H CANAL CO.-F 1851 FLS(ffs). 1st MO. OF RATE.
- 20 MOBILE/JUN 15/ A (A inverted) in red 30mm CDS with msc 75 & f(?) mail. Int cont. re: Indian interruption of mail, etc. datelined 1836.
- 21 WEST BLOOMFIELD/AUG 15/N.Y. in 30mm CDS with msc Free-JOHN DICKSON,M.C./Aug 13, 1832 & notation "A REVOLUTIONARY SOLDIER" F+, slightly aged FLS.
- 22 PM FRANK- ROME/APR 27/N.Y. in red 30mm CDS with HS FREE & msc J Hathaway/PM/Rome VF 1838 FLS(ffs)
- 23 MSC 1½ Oz & 75 in red ink--6 x 12½¢ rate, with red 28mm NEW-YORK/JUL 25-CDS on F(ffs) FLS-1831-WMK H&S--colorful high, multiple rate cov.
- 24 EARLY(1819) DROP LETTER-NEW-YORK/JUL 22 in red 26mm CDS with msc 1 - Carried outside mail from Albany then dropped into NYC PO. 16¢ saved. Cont. re: Banking. VF(ff) 1819 FLS. Own Est \$25.00
- 25 Red SL PHILAD^A RAIL ROAD-somewhat blurred. Also has 29mm NEW-YORK/24 MAR/10 cts. CD\$ Int. Cont. VF 1846 FLS-scarce!
- 26 Faint red HS STEAM & red 30mm BOSTON/29 Jun/5cts F FLS datelined NYC 1850
- 27 MSC STEAM & 5 on VF 1846 FLS to BOSTON, datelined NY-Single rate.
- 28 MSC STEAMBOAT & 10 on F+ FLS to BOSTON, datelined NY. Double rate.
- 29 3 F-VF MASS. FLSs-1. FALL RIVER/FEB 1/Ms in 30mm CDS with HS 5 (1854) 2nd EASTON/MAR 7/Mass & msc 5 (1848) 3rd Faint NORTHAMPTON/DEC 24/Ms & large HS 5, datelined 1849.
- 30 PM FRANK-MSC NEWFIELD NY/Aug 25 & Free/A. DUDLEY PM on F(ff) 1838 FLS.
- 31 1st PM FRANK-(SCONONDOA) Free/ SSBREESE/PM on VF (ff) 1823 FLS-ONEIDA CO
- 32 MSC-LE RAYVILLE/9 Sepr & 183/4- F+ 1828 FLS Conts signed by J LeRay de Chaumont, famous pioneer land developer. WMK S&A BUTLER/U.S.
- 33 MSC- EXETER NY/Sept 1 & 10 - VF(ffs) 1840 FLS. Long int. personal letter-Nice OTSEGO CO. item.
- 34 Msc- NEWFIELD NY/Jun 9 & Paid 183/4. Addressed to street address in NYC. F(ff) 1839 FLS.
- 35 Msc- CANTERBURY NY/Sept 28 & 12½ on VF(ffs) 1841 FLS-ORANGE CO DPO.
- 36 Lovely SHAMROCK-IN-WREATH- fancy cancel of Albany, NY, s-o-n of #65 with Albany CDS on slightly worn orange ENV.
- 37 U.S.-IN-CIRCLE with 32mm KEESEVILLE/DEC 20/N.Y. CDS--F-FANCY cancel on VF yellow ENV--docketed 1863.
- 38 FANCY, clear GEOMETRIC(see Illus) on SE #65. VF cream ENV. Dock 1868.
- 39 #65 tied to slightly worn ENV with CDS GREEN POINT/APR 10/N.Y. SCARCE.
- 40 #65 with small trunkated rec. HS containing MISSENT &/FORWARDED(20x8mm) & tied by target, has SYRACUSE/APR 19/NY in DCDS-also CDS of FULTON/APR 23/N.Y.--Lower rt. of ENV has heavy stain & some wear.
- 41 Msc- BAYVIEW NY/OCT 6 1863 ties #65 to F+(hinge rems on l side of face of ENV) Notice yr date in townmark--Nice!
- 42 EAST NEW YORK/OCT 23 in light,blue 25mm CDS with odd blue cork killer on VF #65--F+ orange ENV.. This PO now a station in Brooklyn.
- 43 Vert. pr. SE #65s killed with odd shaped grills & 32mm LEONARDSVILLE/DEC 6/N.Y. CDS. PLUS blue & red lg cc (oval) of GREEN MFG OF HOES, etc. Stamps are along top edge of F ENV & slightly marred. A scarce v. early bi-colored ccl



- 44 #114-F centering-killed by lg 4 segmented cork -with NORTH LAWRENCE NY CDS & lg v. fancy-bordered cc of D H DAVIS LAND AGENT, etc. on VF, clean ENV.
- 45 UX3 with neg. outline STAR & 20mm N.O.R. CDS of BALDWINVILLE/lg slug/N.Y.--VF post card with printed address.
- 46 #UX5 (2)- 1. Magenta CDS-SCHENECTADY NY & neg STAR-in-solid-circle-with-in-another-circle. 2. -has magenta CDS of AMSTERDAM NY & circled solid STAR-- both dated 1879 & F.
- 47 2 USPCs 1. #UX5 with CDS of ILION, NY & bold Magenta STAR-- 2. #UX9 with dark blue CDS of EDMESTON, NY & dr. blue STAR---Both VF.
- 48 COUNTY CAN. #UX7 with CDS-BATH, N.Y./NOV 21/ STEUBEN CO --also v lt STAR-VF.
- 49 COUNTY CAN. HEAMPSTEAD/FEB 22 1884/QUEEN (CO)- ties SE 2¢ br BN to F ENV.
- 50 Green overall ADV. cov of GREENWAYS CELEBRATED ALES & featuring across ENV, a picture of BREWERY & ST SCENE, (hourse cart etc.)-Has CDS of SYRACUSE, NY. Tar. ties 3¢ BN-V. int. printed cont. F+ ENV---
- 51 ADV COV- Picture of seated INDIAN at left & SH FARNAM & CO, etc ONEIDA NY across top-has ONEIDA, NY CDS. Has torn (¼ missing) 3¢ BN. Cont. has printed purple letterhead dated 1875. Yellow ENV.
- 52 ADV Cov- Picture of COCK & HEN CHICKENS & GEO D STOCKWELL etc. at left-with EAST EDDINGTON, ME- CDS tying damaged 3¢ BN to F ENV-Cont. 1878.
- 53 ADV Cov- Picture of lg PLOW called "ONEONTA CLIPPER" & STRAIT & VAN DUSEN, ONEONTA, NY - with ONEONTA CDS & 3¢ BN on F (small piece torn off reverse side) ENV. Cont on illus printed letterhead.
- 54 4¢ Carmine #215 on long ADV cov (FRONT ONLY) with picture of JOHN F. STRATTON & SON- 6 story bldg. at left. Stamp appears F- tied by NYC oval with large 2 in center of same.
- 55 ADV COV - Lt green FANCY overall ADV of J W FISKE-Ornamental Iron, Bronze & Zink Work-39-41 PARK PL. NY with circular picture of Fancy FOUNTAIN at left. Has early NYC mach can tying 2¢ red (small) BN to F ENV with sm piece torn out at bottom. LOVELY!!!
- 56 COMIC ADV COV- Dark Violet print of lg group of PIXIES in various costumes trying to pry open a lg PIE & legend "CAN WE BREAK THE TRUST?" - Has 2¢ sm red BN tied by CDS BUFFALO, NY-On REVERSE is cc The Larkin Soap Mfg Co-Buffalo N.Y.-F+ ENV & Stamp.
- 57 ADV COV- Overall or. lines with lg picture of white ENV over 80% of face. Illus. ENV has cc LONGMAN & MARTINEZ NEW YORK & pictured Or. SEAL "PURE/L & M PAINTS"-Red 2¢ sm BN tied by 1900 NYC Mach cancel. REVERSE has OVERALL MULTI-COLORED MAP OF U.S. EAST COAST. VF ENV has ½" torn off at rt in opening. SPECTACULAR!!!
- 58 ADVER COV - Picturing fancy POT-BELLIED STOVE & vert cc John H QUACKENBUSH, WEST TROY NY & TROY CDS-with 3¢ BN on F ENV bit ragged at rt. Letter-head of WEST TROY STOVE WORKS--1874.
- 59 2 ADV COVs- 1 has 3¢ BN(2)-with cc of RONK & BOEHMCKE-Commission merch. & NYC CDS(1893)- Cont fascinating printed price list. 2nd-1924 NYC CDS with #552 & blue cut of AUTO VACUUM ICE CREAM FREEZER at left.
- 60 3¢ BN with lg oval cc of J R HELFRICH/ Commis. Merch. & NYC CDS on VF ENV -Reverse has 32mm DCDS UNADILLA, OTSEGO CO/ MAR 27 1882/NEW YORK-used as recieving mark. Cont long printed price list. VF.

- 61 ADV CARD-(NOT imprinted PC of USPO) with 1¢ sm BN & lg cut "THE BLACK SMITH & WHEELWRIGHT" with illus background. Stamp Canceled by oval killer of NYC with CR in center. Printed mess on rev 1894.
- 62 2 Cvs with FISHERS ISLAND, NY CDSS.1 has 2¢ red small BN tied by seg cork killer-VF-with oval RECIEVED 7 & Boston CDS- 2nd is 2¢ red 1899 ENT. with cc of E M & W FERGUSON/FISHER ISLAND, SUFFOLF CO NY.
- 63 3¢ 1874 ENT with 1t purple CDS- CIGARVILLE/AUG 24 1883/NY(30mm) & target. Sm section cut off at rt in opening not effecting stamp. Has Cigarville, N.Y. cc--(Later became CLAY, NY) O.Est\$7.50
- 64 #U227 ENT (severly torn at left in opening) Has HS-MISSENT- in rounded rec. Also SCHENECTADY NY CDS(partial) & PLATTSBURG CDS-Aged ENV.
- 65 MSC - FRESHPOND N.Y. MARCH 8 on sm somewhat soiled ENV- Also has pen can. #25 with 4x5mm piece torn out of rt side-not tied- v early for this SUFFOLK CO PO which was established in 1852.
- 66 2 COVs with #11s both 32mm CDS of SARATOGA SPRINGS /date/N.Y. 1 #11 has had top & part of bottom lines cut away, other is ALMOST 4 marg. Both slightly stained & soiled & backs torn. Still int COVs.
- 67 UNUSUAL cut of B. FRANKLIN Statue with legend- THE FRANKLIN SOCIETY-above & no. 1 BEEKMAN ST./ MANHATTEN NYC below- Has added #300 on slightly aged #U385 ENTIRE.
- 68 Apparently hand colored XMAS card in ENV with POUGHKEEPSIE CDS-12/24/1913 & CDS-SHEPHEARD'S HOTEL/CAIRO, etc. with #406 & added 1½ p BRITISH stamp for forwarding to Egypt from G.B. On reverse is almost complete HS of BROWN & SHIPLEY, FOWARDER'S--Also 1913 XMAS SEAL U.S. #WX13 tied by a 2nd SHEPHEARD'S HOTEL CDS ++ CDS of COOKS PO/CAIRO & "STANDARD CAIRO CDSS. V unusual cover.
- 69 Complete 55x35 Oval forwarders HS- "IF NOT CALLED FOR RETURN TO/BROWN & SHIPLEY & CO/128 PALL MALL, LONDON/Who have paid all/necessary postage" on reverse of somewhat soiled ENV forw from G.B. to ITALY with POUGHKEEPSIE NY CDS (1914) & #378. Minor tears--
- 69A 5 NYC COVs with BANKING FIRM ccs (2 are fancy)- 4 are ENTs(1 unused U311) All slightly aged. #U400 & #U411- 5th has #301. F-VF
- 70 2 U.S.P.C.s with FANCY cancels-1.#UX5 with SOMMERS+/JAN 6 1881/+NEW YORK-DCDS with STAR-IN-CIRCLE (2 pin holes) 2nd is #UX9-EAST CHATHAM/ MAR 3 1890/N.Y. & HOLLOW STAR-IN-CIRCLE (all in violet) - VF

END OF SALE

Deadline for bids on above
sale #14 is Dec 26, 1980

PLEASE NOTE! - In this issue you may notice that the auction listings, etc, have been printed in slightly smaller print so that we might save on the pages required and the postage needed in mailing. This is an experiment and we would appreciate knowing if this reduction inconveniences anyone. Your comments, pro or con, would be appreciated by the editor. Please write and let us know!!

CINCOPEX REPORT

ESPHS members did quite well at this very successful show where a great deal of postal history was shown, nearly one third of the frames!

R H LOUNDSBURY: "New York State Postal History" took Best Open Trophy, First Award Ribbon, First ESPH Award Trophy & Federation Award.

NICK TODARO: "Selected Pages of Oswego County Postal History" won the First Award Ribbon, & tied for Second Place ESPH Award Trophy.

ANTON ZAHM: "Syracuse-Range of Coverage During the Stampless Period" won The First Award Ribbon & tied for Second Place ESPH Award Trophy.

HARRY TABOR: "Changing Times in the Town of Sidney, NY" received a First Place Ribbon & a First ESPHS First Certificate of Merit.

J BURTON HULBERT: "Manuscript Covers of Otsego County, NY" got a Second Place Ribbon & a Second ESPHS Second Certificate of Merit.

J BURTON HULBERT: "Margaretville Hand Postmarks" won a Second Award Ribbon & Best Single Frame Exhibit Trophy.

CHARLES W ROOT: "Fancy Cancels of Chicago" won a Second Award Ribbon & and a United Postal Stationery Second Certificate of Merit.

CLIFF TUTTLE: "Sullivan County NYSDPO's and Stampless Covers" was entered but not in competition.

EMMA KOBERG: "First Day Covers of the #657 Sullivan Issue" got a Second Place Ribbon & SPA Medal for exhibit showing the most research.

page 16

EMPIRE STATE POSTAL HISTORY SOC
PO Box 8684, Academy Sta
Albany, NY 12208

RETURN POSTAGE GUARANTEED



34316

34317

FIRST CLASS
MAIL

