

EMPIRE STATE POSTAL HISTORY BULLETIN

SOCIETY
FOUNDED 1967

FALL 1990

PRIVATE POSTS AND LOCAL DELIVERY **By MARTIN MARGULIS**

In 1680 mail could be sent from London to the other post towns in England. However, there was no provision for intra-city postal delivery. On March 27 of that year, William Dockwra, a London merchant and his partners started the Penny Post.

For one cent, prepaid, letters or parcels weighing under one pound would be delivered to any part of London. To more "remote" towns such as Hackney, Islington, South Newington, Butts and Lambeth, an extra penny had to be paid by the individual receiving the letter or parcel.

The principal office was Dockwra's house. There were seven sorting offices and four to five hundred receiving houses. Messengers carried letters from the receiving houses to the sorting offices, from which mail was delivered. Letters and parcels were hand stamped to show payment of fees.

Dockwra's post was closed down by the English Government on November 23, 1682 for violation of the patent given to the Duke of York to deliver the mails. On December 11, 1682, the Post reopened under government control. By 1684, the messengers were regular government employees paid a regular wage. Letters sent by the government post were also hand stamped.

Prior to the opening of the Penny Post, letters and packages were delivered throughout London by porters and messengers. In 1765, Parliament passed an act (5

George 3 Chap 25) which allowed for the setting up of a "Penny Post Office" in any city or town in Great Britain, Ireland or America. Once the Penny Post was established, no person could collect or deliver letters without a license from the Postmaster, which according to Willcocks (England's Postal History 1975 Perth, Scotland) implies that anyone could before that time. However, the Penny Post had to pay its own way or it would have to be discontinued.

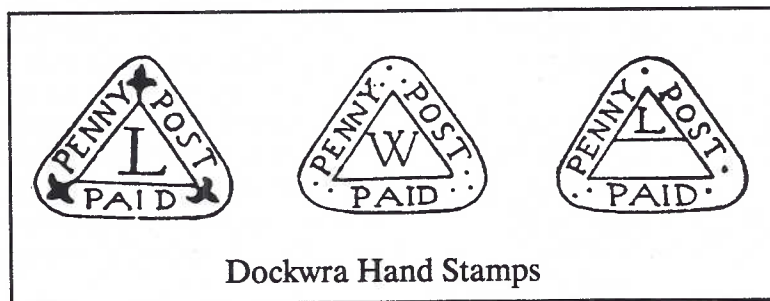
I have never heard of any Penny Post in America and most of Great Britain's came some time after this date. However, once they were started, they became widespread

in England. In the U.S.A., nothing. I would, therefore, speculate that there were facilities for the intra-city delivery of letters and packages so that the problem was never so acute as to require action.

Calvert Hahn wrote two articles

about the pre-1840 delivery of local mail. One was "Origins of Drop Letter Charges" - SPA Journal, 1977, and the other was "Letter Carrier Service in New York" in the Chronicles, 1973. The following information was drawn from them. If the information is garbled in transition, it is obviously solely my fault.

Under Section 28 of Letter Carriers' Postal Act of 1794, there is provision for the employment of letter carriers for



Dockwra Hand Stamps

(CONTINUED ON P. 5)

THE BULLETIN
is published by the
EMPIRE STATE
POSTAL HISTORY SOCIETY

P.O. Box 5475
Albany, N.Y. 12205

**All articles and advertising for the Bulletin ,
except auction business, must be sent to the
editor:**

Martin Margulis
1368 Metropolitan Ave.
Bronx, N.Y. 10462

All letters to the President are to be mailed to:

William Hart
Box 167
Shrub Oak, NY 10588

Annual dues.... \$5.00

Officers and Committee Chairman

PRESIDENT	WILLIAM J. HART
VICE PRESIDENT	MARTIN MARGULIS
SECRETARY-TREASURER	MARIS TIRUMS
DIRECTORS	
('91)	EMMA KOBERG
	JOHN LANGE
	DAVID PROULX
('92)	J. BURTON HULBERT
	ROGER KLINE
	CHARLES SWEETING
('93)	LOUIS CALL
	CHARLES EDWARDS
	GERALD WILEY
AUCTION MANAGER	GEORGE BERNADT
BULLETIN EDITOR	MARTIN MARGULIS
ASSOCIATE EDITOR	DAVID MARGULIS
A.P.S. REPRESENTATIVE	EMMA KOBERG
ADVERTISING MANAGER	BILL SEIFERT
CENTRAL COORDINATOR	DAVID PROULX
FINANCE	MARIS TIRUMS
PUBLICATIONS CHAIRMAN	JACK HAEFELI

EDITOR'S MESSAGE

I am writing this at the end of September. We have just started on this edition of the Bulletin. David's wife had a daughter in late August. Unfortunately, the girl became sick and had to return to the hospital. Now all is well. But, first things are first, so David's priorities were understandably elsewhere.

In order to write the article about New York Local Deliveries and the Private Posts, I purchased a key document from the Empire Group. Box 2529, West Lawn, Pa. 19609. They are very good at tracking down postal history material that you might need.

Our own Robert D. Harris sent a photostat of a N.Y.C. P.O. announcement which proves that the listing of Station E and F were reversed. It also gives more information about the operations of the post office. Unfortunately, we had no room to print it in this issue. It will appear soon.

Member Agnes Cavalari, long editor of the Half-Moon Postcard Club's Hudson Valley Gazette, sent an article picturing some small N.Y.S. post offices. Picture post cards are an excellent source of postal history material especially for the period after 1890. They are usually comparatively inexpensive. However, you have to do the looking yourself: a dealer's time is worth money.

Lawrence Robillard, a long time member of our organization, has sent me much interesting material. I will be using it over the next few issues and very much appreciate his sending same. Much of it, the material I've received, are letters from N.Y.S. soldiers written during the Civil War. They give you are feeling for the time even if some might not consider it postal history as such. They are certainly history and they came by the post.

John Lange has shared with us some of the covers of his prize winning collection of Saratoga County covers. How about others of you doing the same with your 'prize' covers. They don't require much write up, though some information about them would certainly be appreciated.

We wish to express sincere thanks to Bill Seifert who has agreed to become Advertising Manager. It is a job that badly needs doing and we are sure that Bill will do a very competent job. His efforts are truly appreciated.

Martin Margulis

ESPHS Dealers! Consider advertising in our BULLETIN!!! If you sell postal history or related items it would be hard to find a publication anywhere delivering more serious collectors per dollar. Also, you will be helping support the society while getting your message across to our readers who are active collectors and buyers. The rates per issue are as follows:

Full Page	\$27.00	Half Page	\$15.00	Quarter Page	\$7.50
-----------	---------	-----------	---------	--------------	--------

An advertisement run in four consecutive issues (one year) and paid in advance will be run five times. For more information or to mail advertisements write to the Editor at the above address. Hope to see you in the next issue!!!!

PRESIDENT'S CORNER

Dear Members:

We had a very successful October meeting in Utica with about 30 members in attendance, a very active bourse, a well attended directors' meeting and an enthusiastic Society meeting.

The principal topic of the directors' meeting was a response by the "ad hoc" committee of Charles Sweeting, Roger Kline and Jay Hulbert on the question: "Is the Society properly structured to provide continuity for the next 25 years relative to the selection of officers and the formation of committees?" The committee was unanimous in the opinion that no change was necessary. The Board concurred with that opinion. One suggestion was made to improve communications -- the President should appoint at least one Board member to be a representative member of each committee. If you, the member, have any constructive or dissenting opinions on the question I would like to hear them.

Other topics included a limited Publications Committee report indicating that the Fielder study is moving forward. A suggestion to me by E. Beiderbecke was to promote the attendance of more dealers to enhance the Bourse activities of our meetings. This was considered worthwhile by the Board as long as it does not overload our present facilities. I will pursue. C. Sweeting recommended that the Bulletin Editor start a County Column for contributions by the membership. You will be hearing more about this idea in the Bulletin.

Some of these details were reviewed at the general meeting. In addition, we had a presentation by Robert Harris on the subject of early postal rates. He has proposed a Society study effort on the subject. A future Bulletin will have details. At the end of the meeting a proposal was made by Messers Lange and Matte to use the annual meeting to sponsor a limited form of membership exhibiting. It could be competitive and/or informative. John Lange closed the meeting with a discussion and display on how to prepare exhibits.

We have under consideration the sharing of a table with another society at the NYC ASDA show next March. A coincident regional meeting will be explored. 1992 will be the Society's 25th anniversary. I have asked Gerald Wiley to chair a committee, including Charles Edwards and Louis Call, to consider the most appropriate course for the occasion.

Between October and May there is a long stretch that will be partially filled by several issues of the Bulletin. I know that the Western group continues to meet and there undoubtedly will be a January meeting in Albany. How about the rest of the membership? Any interest in a regional meeting? If there is, let me hear from you and I will help to promote it.

Bill Hart

TRADING POST

WANTED: Any written, printed or photographic materials pertaining to Minisink, Center Point, Bushville and/or Greenville in Orange County, N.Y. Catherine Ardler, 124 County Route 35, Port Jervis, NY 12771

WANTED: 19th century US covers/cards with CANCELS with any of these words as part of the town name: FURNACE, FOUNDRY, FACTORY, POTTERY, FORGE, BLOOMERY, TANYARD, QUARRY, WORKS, KILN, MINE, MILL, SHOPS, etc. John Whittlesey, Breckenridge Village North, 36500 Euclid Ave., Suite B-666, Willoughby, OH 44094

WANTED: US 1869 issue covers from: New Jersey, Staten Island, Long Island, Block Island, Marthas Vineyard, Nantucket. Brad Arch, 144 Hamilton Ave., Clifton, NJ 07011

WANTED: Otsego/Delaware PH. Early India cancels on Victorian issues Scott nos. 2 thru 35. US precancels Scott 1054 onwards. Hulbert, RD #4, Box 4A C, Oneonta, NY 13820

FLORIDA covers wanted. Pre-1900 unusual postmarks of interesting content. Herbert P. McNeal, 520 Lakemont Av. South, Winter Park, FL 32792

UNUSUAL New York State Postal History WANTED: Pre-1855 stampless, Rates, Routes, Markings, and Usage. Anything unusual, any county, foreign usage, or cross border. Jim Adams, P.O. Box 40792, Indianapolis, Ind. 46240

WANTED: Orange County. Allard's Corners, Breeze Hill, Cadiz, Cahoonzie, Carpenter's Point, Cedarcliff, Center, Center Point, Club House, Crawford, Deer Park, Dolsentown, Durlandville, East Coldenham, Edenville, Finchville, Gardnertown, Graham, Greenwood Iron Works, Greenwood Works, Hampton Ferry, Honesville, Horace, Lake, and Mortonville. Martin Margulis, 1368 Metropolitan Ave., Bronx, NY 10462

WANTED: New York "String of Pearls" dues on cover or multiples. Cash or trade. Edward J. Leahy, Jr., 65 Churchill Lane, Smithtown, NY 11787

WANTED: Belle Terre (Suffolk) and Broad Channel (Queens). Kenneth Brady, Box 663, Port Jefferson, NY 11777.

(CONTINUED ON NEXT PAGE)

PUBLICATIONS COMMITTEE

Jack Haefeli....Chairman
P O Box 8645, Albany, NY 12208

While there have been discussions regarding the society publications, little that can be shown to the membership has resulted as yet.

During the summer Dorothy "Scott" Fielder has submitted her revised manuscript for her Otsego County book. This is one of the first publications that your society has received on computer disks. Even tho it was submitted in the Apple format, we are able to translate it to MS DOS so we can rearrange it and typeset it on a laser printer to be submitted directly to the printer. We are new at this, but it has great potential.

The newest member to join the publication committee is Ray Coco, who in real life is a professional computer expert serving on the staff of our NYS University System. Ray is vigorous, young, and very knowledgeable. We shall soon see the major contributions he will be able to make to our society.

Your society should do more than just publish the tomes that we print ourselves. We wish to bring to your attention any publications that might be of interest to our members. In that light, if any of you know of or have publications that might be of interest to our members please submit the information to us for possible use.

We expect that the committee will be enlarged a bit more. We also expect that we will shortly start to show you some concrete results of our work.

Your continued support of our Bulletin editor Martin Margulis will be appreciated. He is always looking for things of interest to publish for our members.

TRADING POST

(CONTINUED FROM PREVIOUS PAGE)

ASIAN COVERS WANTED: Pre-1910 covers from China, Japan or Hong Kong. Also later Japanese hand-painted covers. Will buy or trade: have some NY material. Send copy or covers, priced or for my fair offer. Can also use stamp collections same areas. APS since 1970. Martin Toly, P.O. Box 2111, Liverpool, NY 13089.

NOTICE: All Trading Post advertisements MUST be submitted TYPED. One 20-word, excluding name and address, advertisement is available free to each member annually. Advertisements of up to 75 words will be accepted at a cost of 10 cents per word per issue excluding name and address. Advertisements run for four issues will be run for a fifth issue free of charge.

ESPHS PUBLICATIONS FOR SALE

The following publications are available from your society directly. Send to: **ESPHS, P O Box 5475, Albany, NY 12205**

MANUSCRIPT POST OFFICES OF NEW YORK STATE

The definitive work! Published in 1984 by ESPHS.

Retail price: \$12.00.

Member price: \$9.60, postpaid.

ONTARIO COUNTY POSTAL HISTORY by Emma Koberg
95 pages, maps, postmarks and illustrations.

Reprint. Limited edition of 25, members only

Member price: \$9.00 postpaid.

NEW YORK POSTAL HISTORY by Kay and Smith

The NYS "bible". APS retail price: \$40.00.

Member price: \$28.50, postpaid

WAYNE COUNTY POSTAL HISTORY by Emma Koberg
81 pages, maps, postmarks and illustrations.

Retail price \$10.00

Member price \$6.00, postpaid

OTHER PUBLICATIONS AVAILABLE

N.Y.S COUNTY & POSTMASTER BOOK by David Proulx
Member David Proulx has completed his book on NYS County & Postmaster cancellations. Copies were given out to those members who attended the May meeting of the Society. A copy of the book will be sent FREE to all members who request it and who haven't previously received one. You must send your request to David Proulx, 7629 Homestead Dr, Baldwinsville, NY 13027

N.Y.S. STAR CANCELS by David Proulx

This book contains all known star cancels and lists them by town, county and date of use. Several illustrations are included. This is a reprint of the 1987 book. Price \$7.50 post paid. Order from David Proulx, 7629 Homestead Dr, Baldwinsville, NY 13027.

THE POST OFFICES OF THE COUNTY OF DUTCHESS
by Roy Ahlquist

Provides names, locations and brief information according to postal records for all of the post offices which have existed in the county. Price \$2.85, postpaid. Order directly from Roy Ahlquist, RR1, Box 122 N. Quaker Lane, Staatsburg, NY 12580

PRIVATE POSTS AND LOCAL DELIVERY BY MARTIN MARGULIS

(CONTINUED FROM P. 1)

delivery of letters which had not been picked up within a few days of the letter's arrival at the post office. The charge was two cents. There were no postal markings to show this charge, which was for the local postmaster and/or the carrier. However, any person who did not want letters delivered could so state in writing to the postmaster. The money obtained in this manner was not reported to Washington.

Also, a letter could be dropped at the post office with the name and address of the person for whom it was to be delivered. These were called "Letters not for Transmittal." The carriers who delivered them were called the Penny Post and worked with the postal officials. They were not private postal delivery men. If the letters were not picked up within a few days, they were delivered (these were intra-city letters (FLSs)).

What the private post did was: (1) bring letters to the post office; and (2) make local deliveries. The local deliveries, of course, didn't go through the post office.

The use of semi-official letter carriers in New York City goes back to 1789 when a Mr. Duncan was listed in the City Directory as a letter carrier. In 1794, he was joined by a second carrier. The Post Office Report of 1789 mentioned this service.

In 1840, personnel from the U.S.P.O. and local post offices went to England to observe how the new nationwide Penny Post worked. On the basis of what was observed, the N.Y.C. Postmaster requested permission from Washington, D.C. to open a local intra-N.Y.C. delivery system. It cost more than one penny.

At the same time, in 1840, a privately-operated "New York Penny Post" opened for business; covers are scarce. It operated during 1840 and 1841 and did not issue any stamps. Letters were marked by a hand stamp, a double circle postmark with New York on the inner-top side, not attached to the circle and Penny Post on the bottom. The letters are all capitalized and have serifs. The month, date and time are in the center of the circle. The Post was not a success and it required Henry Windsor, a visiting Englishman, to start the next post.

Henry Windsor, observing the inefficiency of the intra-city mail service in N.Y.C. decided he would start his own private post there. Alexander Greg, a friend of his and an American, offered to help. Windsor felt that an American

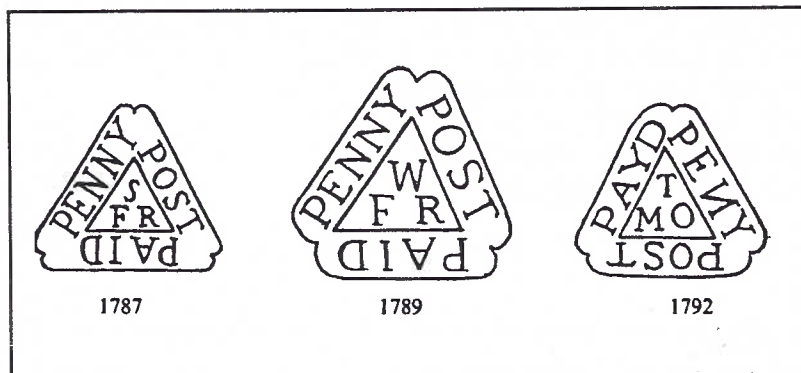
name would help get the venture off the ground. Besides which Greg had connections with those prominent people who would use the system and could say a good word for him.

The system started in early February, 1842 and was inundated by Valentine's Day letters to the extent that the service faltered. However, confidence was high enough in this service, so that it quickly recovered and became highly efficient and profitable.

It was not a Penny Post, the stamps were two dollars and fifty cents per hundred or twelve for thirty-six cents. The stamps had a picture of George Washington in the middle, with City Dispatch Post on top of it and three cents below the picture. There was also a hand-stamped post-

mark which cancelled the stamp. This contained the date and time.

Greg is generally considered to have run the post, although Windsor's son Charles claims his father did. In August of 1842, the operation was taken over (purchased) by the N.Y.C.



Post Office, which then ran it with Mr. Greg as operating superintendent.

For your two-and-one-half or three cents, you could drop your letter in any of the City Dispatch Post letter boxes spread throughout the City and it would be delivered anywhere in the City, generally the same day, depending on when the letter was mailed. There were three deliveries per day - at 9:00 a.m. and 1:00 and 4:00 p.m. Packages of under one pound would also be delivered but had to be deposited at the company's office. There were provisions for registered mail.

Local deliveries did not have to be pre-paid, the receiver would be charged the three cents in these cases. All letters to the main (and only) post office had to be pre-paid. Letters with U.S. City Dispatch stamps and Scott #1 exist. When the government took over the service "United States" was added to the stamp. See illustrations.

In 1844, John Boyd started his own private mail service. He charged two cents to deliver a letter anywhere in New York City or Brooklyn. There were four pick-ups per day: 7:00 a.m., 10:00 a.m., noon and 2:00 p.m. These letters went out for delivery two hours later (just like now). Boyd also delivered letters in the City brought in by the Hale or Pomeroy expresses.

Both services, the U.S. City Dispatch and Boyds',

(CONTINUED ON NEXT PAGE)

PRIVATE POSTS AND LOCAL DELIVERY BY MARTIN MARGULIS

(CONTINUED FROM PREVIOUS PAGE)

continued in business until July 1, 1845 when Congress raised the drop letter rate to two cents. While people were willing to pay two-and-one-half cents to use the government post, they were unwilling to pay three-and-one-half to four cents and in November of 1846 the U.S. City Dispatch was discontinued and was taken over by Abraham Mead and later Charles Cole. The letter charge was then lowered to two cents (they could hardly charge more) and the name was changed to the City Dispatch Post.

In 1847, Aaron Swarts (Swartz) started his own private post which was very successful. There were also numerous others. Most went out of business after 1851 when the N.Y.P.O. re-entered business by doing away with the one-cent fee for bringing letters to the post office and charging two cents to deliver letters.

Earlier this year, member Richard Frajola had a net priced sale of the J. William Middendorf, Jr. collection of carrier and local post stamps and covers. The catalog is lavishly illustrated. As most of the material will not be available for general public viewing, I am illustrating pertinent covers (with Mr. Frajola's permission) in the Bulletin.

Mr. Frajola's firm can be contacted at:

Richard Frajola, Inc.
85 North Street
Danbury, CT 06810
1-203-790-4311

A Carriers and Locals Society has been started for those interested in the field. Contact:

Richard Schwartz - Acting President
168 Cherry Lane
River Edge, NJ 07661
1-201-487-6338

Membership dues are fifteen (\$15.00) dollars. Checks should be made out to the Carriers and Locals Society and should be sent to:

Martin Richardson
P.O. Box 1574
Dayton, Ohio 45401



The one cent stamp pays to carry the letter to the post office. The Scott #1 pays inter-city postage.

(CONTINUED ON NEXT PAGE)

PRIVATE POSTS AND LOCAL DELIVERY BY MARTIN MARGULIS

(CONTINUED FROM PREVIOUS PAGE)



A unique sheet of City Despatch Post stamps

PRIVATE POSTS AND LOCAL DELIVERY BY MARTIN MARGULIS

(CONTINUED FROM PREVIOUS PAGE)



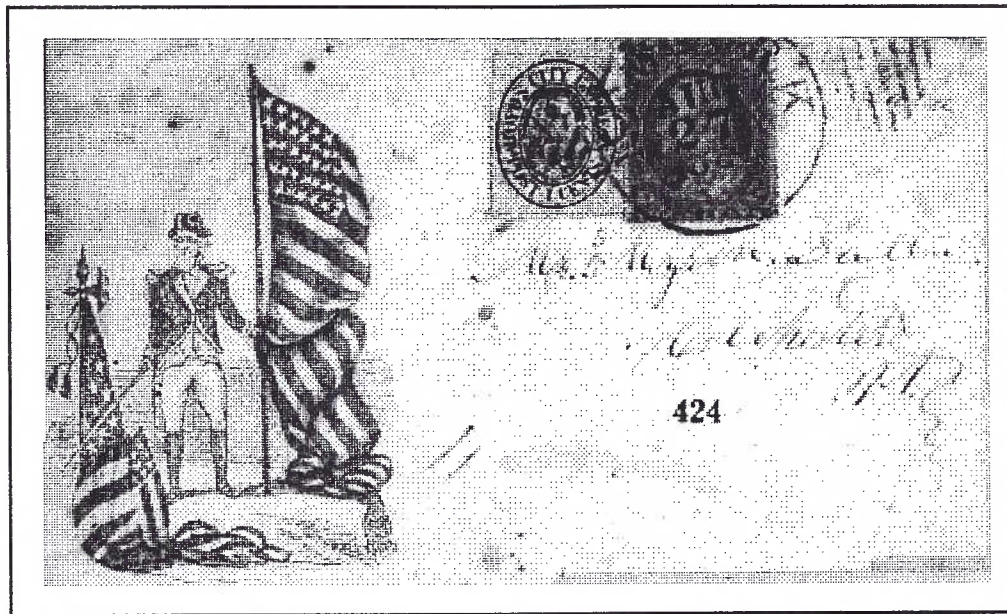
United States City Despatch Post stamps used to pay inter-city postage



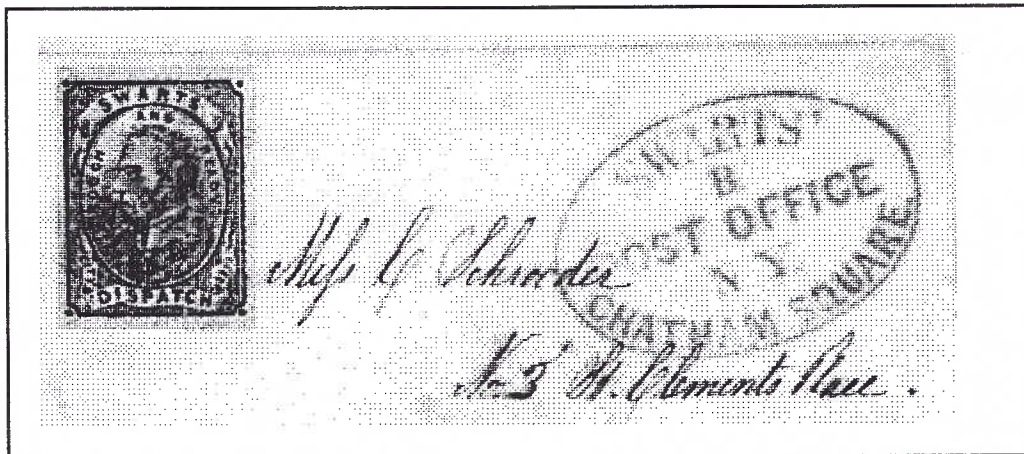
(CONTINUED ON NEXT PAGE)

PRIVATE POSTS AND LOCAL DELIVERY BY MARTIN MARGULIS

(CONTINUED FROM PREVIOUS PAGE)



Boyd penny stamp pays to carry letter to Post Office. Three cent stamp pays postage from NYC to inter-city destination

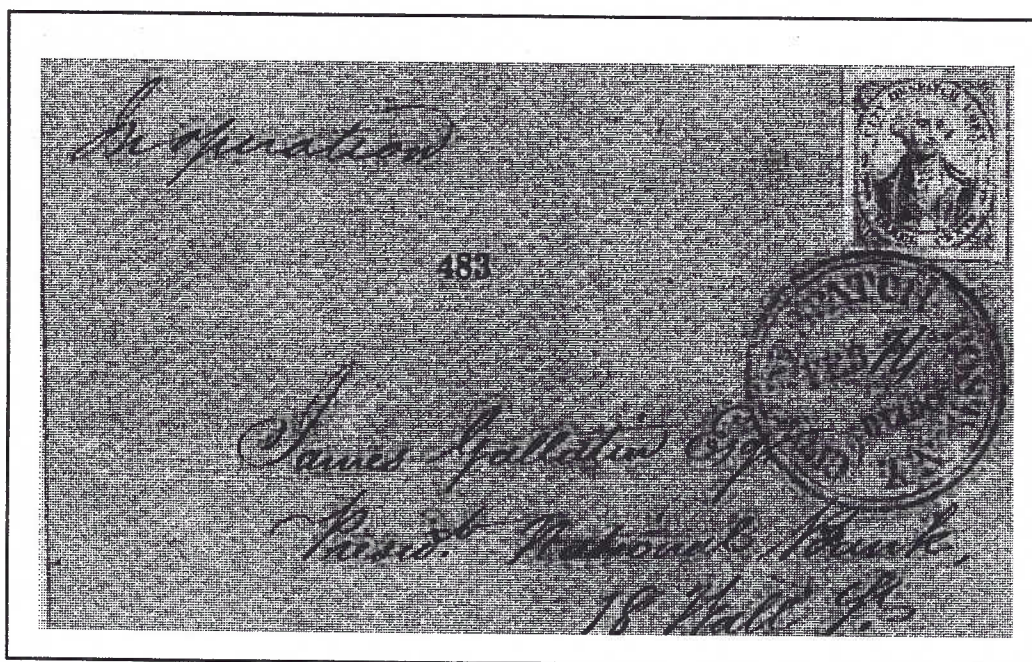


Swarts stamp pays for local delivery,

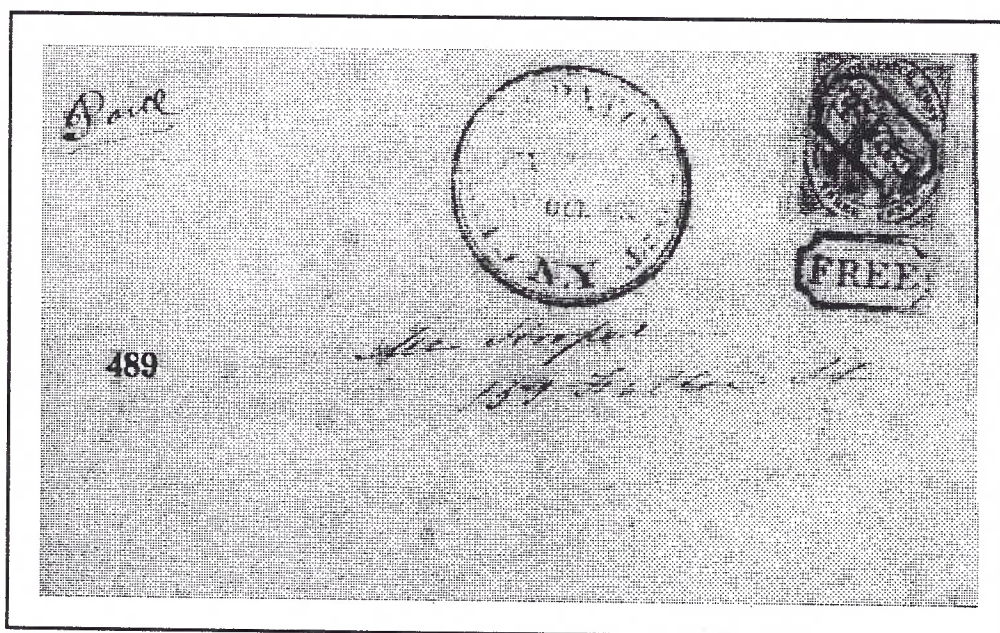
(CONTINUED ON NEXT PAGE)

PRIVATE POSTS AND LOCAL DELIVERY BY MARTIN MARGULIS

(CONTINUED FROM PREVIOUS PAGE)



Two New York City locals. The lower one was carried at no charge





UNCLE SAM STAMP

**&
COIN CO.**

621 Third Avenue
Watervliet, NY 12189
Arnold Leiter - prop.
Phone (518) 274-0994

SOMETHING FOR EVERY COLLECTOR

HONESTY AND REAL VALUES

10 - 6 Tues & Wed
10 - 8 Thur, Fri & Sat
Closed Sunday & Monday

REMEMBER -- Always a 10% discount
on all supplies to any ESPHS member

**15,000
NYS COVERS**

FREQUENT LISTS

WRITE TO:

**ERNEST S. PEYTON
PO Box 51810
PHOENIX, AZ 85076**

MEMBER ESPHS

**WANTED BY COLLECTOR
UNUSUAL
CENSORED COVERS & AIRMAIL COVERS**

CENSORED: ANY COUNTRY - ANY WAR

**AIR MAIL: USA AND POSSESSIONS
OVERSIZED COVERS
POSSESSION TO POSSESSION USAGE
COMMERCIAL ZEPPELIN USAGE
PARCEL POST OR PACKAGE USAGE
NO FIRST FLIGHTS OR AIRPORT DEDICATIONS**

**JIM ADAMS
P.O. BOX 40792
INDIANAPOLIS, IND. 46240**

DISCONTINUED POST OFFICES OF NEW YORK STATE

By AGNES CAVALARI

(EDITORS NOTE: This is the first of what I hope will be a series of articles by Mrs. Cavalari. Mrs. C. is a post card collector and a dealer. She collects the postal history of Orange County and other neighboring counties. Most of the villages and hamlets in the area were small. Improvements in technology caused many to be considered redundant and they were closed.

Mrs. C. is the reason that I went to my only post card show, near Newburgh. I was amazed by the number of dealers who had material from N.Y.S. counties. I spent hours looking at the cards that Mrs. C. was selling and purchased quite a few. Unfortunately for me, what I was looking for was mainly what Mrs. C. collected for herself.

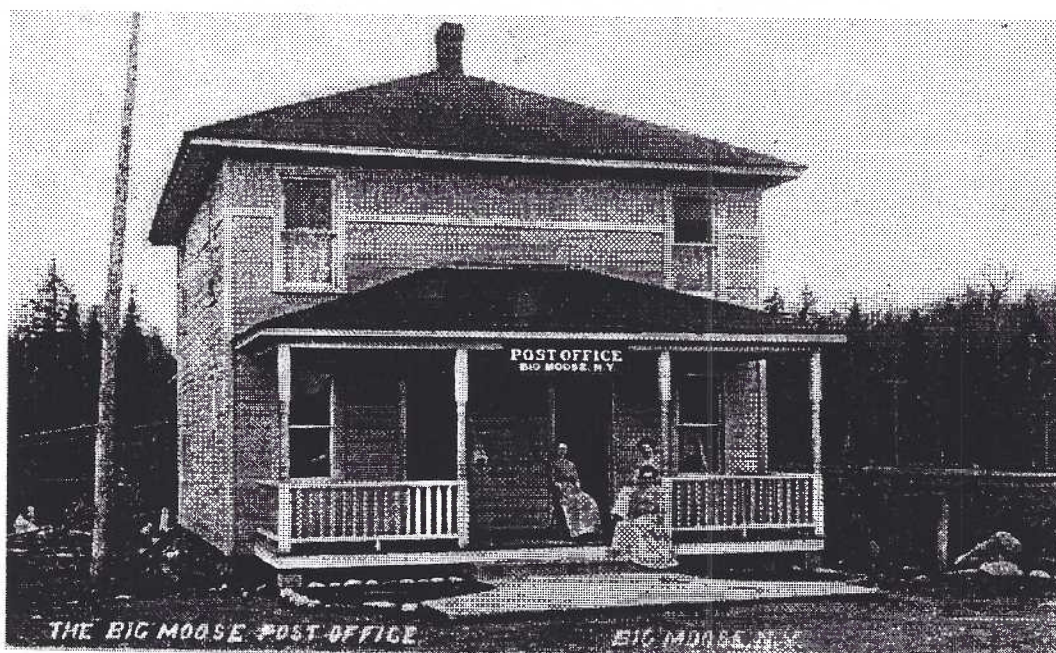
Compared to what is available at major N.Y.C. stamp shows the post card show could have been considered a gold mine of postal history material. Of course you don't get much early material or manuscript FLS's at post card shows.

If you collect picture post cards, you might use them to illustrate some area of local postal history which is of interest to you and might be of interest to fellow ESPHS members. You could then put them into an article to be included in a future issue of the Bulletin. David will scan the cards on the scanner and they will then be returned to you or you could send photographs. Unclear photostats are useless. Also, please provide some 400 words of text to accompany the pictures. I can provide some historical information if you so desire. Maris told me that he would like to see more county postal history in the Bulletin. This could be a painless way to provide it.)

The picture post cards of the early, 1900's provide us with a view of rural New York State when most small villages, hamlets and crossroads had their own post offices. The office, often in a house or store -- sometimes in a railroad station -- is going the way of the one room school house and it is with nostalgia that one studies the old pictures.

I have been collecting New York State post offices on post cards for about 10 years and it is the small discontinued ones that are my favorites. It is always nice to add one that has the proper cancel but that is often not possible.

Here follow a few with the years in which they were discontinued as noted in the New York Postal History book by John Kay and Chester Smith Jr.

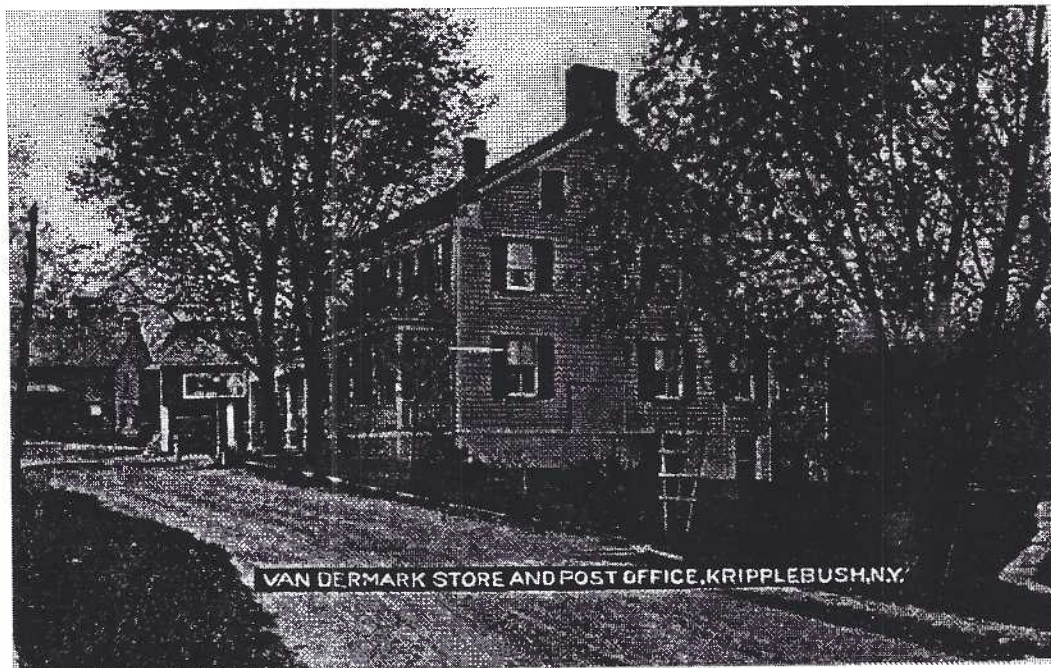


Big Moose, Herkimer County. Discontinued 1972

(CONTINUED ON NEXT PAGE)

DISCONTINUED POST OFFICES OF NEW YORK STATE

(CONTINUED FROM PREVIOUS PAGE)



Kripplebush, Ulster County. Discontinued 1918



Allaben, Ulster County. Discontinued 1960

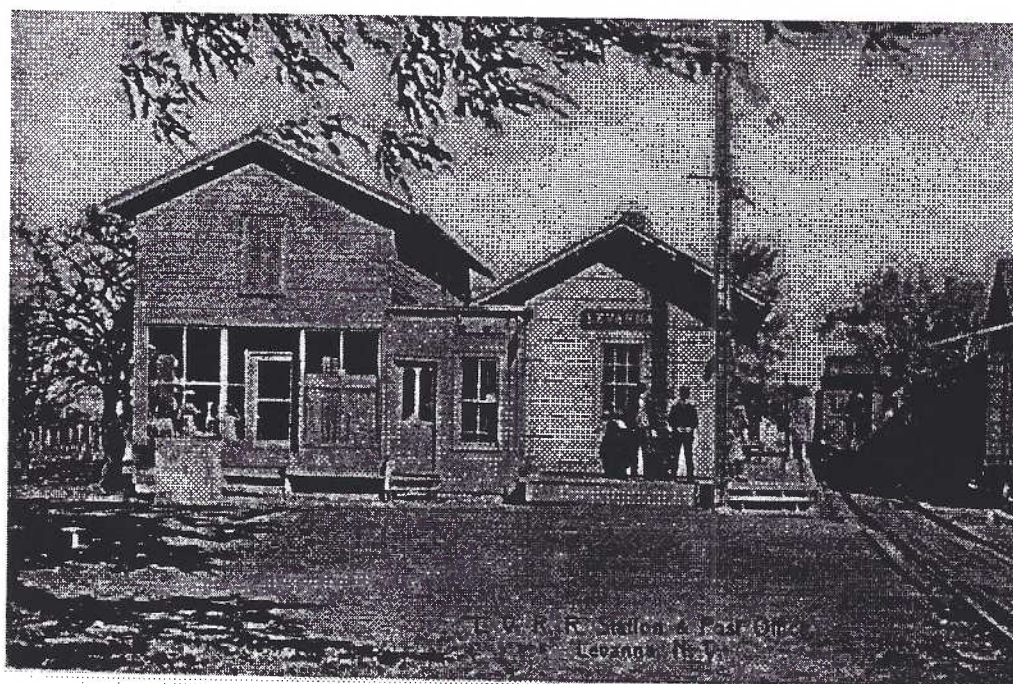
(CONTINUED ON NEXT PAGE)

DISCONTINUED POST OFFICES OF NEW YORK STATE

(CONTINUED FROM PREVIOUS PAGE)



Garfield, Rensselaer County. Discontinued 1933



Levanna, Cayuga County. Discontinued 1968

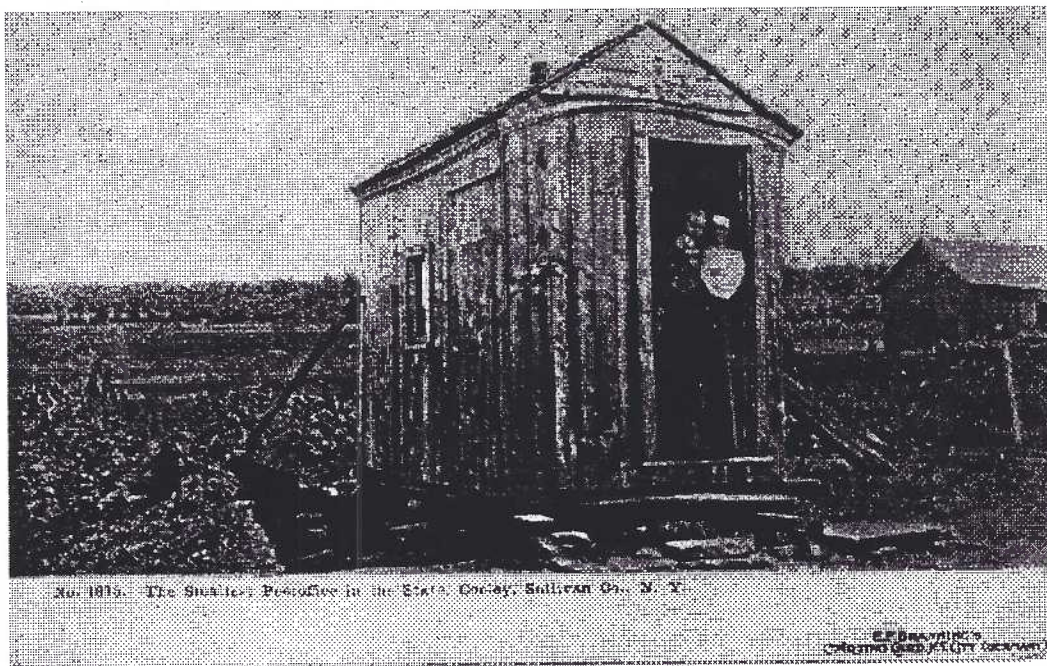
(CONTINUED ON NEXT PAGE)

DISCONTINUED POST OFFICES OF NEW YORK STATE

(CONTINUED FROM PREVIOUS PAGE)



Grooville, Sullivan County. Discontinued 1932



Cooley, Sullivan County. Discontinued 1919

MINUTES OF THE ANNUAL MEETING OF THE EMPIRE STATE POSTAL HISTORY SOCIETY OF MAY 6, 1990

The annual meeting of the ESPHS was called to order by President Hart at 1:25 PM at Karrat's Restaurant in New Hartford, NY. There were 25 members and guests in attendance. Pres. Hart noted that this was the 24th annual meeting of the Society, and that of course meant that next year's meeting would be the 25th. A special effort will be made to make next year's meeting extraordinary.

The death of long time member Ralph Reynolds was noted. Ralph's many contributions were cited, and a moment of silence was observed in his honor.

At this point, a short program on postal history was presented by several members. Bill Hart showed and discussed a supplemental mail card. Emma Koberg showed a series of slides of Chautauqua County covers from the Whittelsley collection. And finally, John Lange showed several Saratoga County covers. The feeling was expressed that presentations add to Society meetings and will be scheduled for the future.

The Secretary read his annual report to the membership. This report was published in the summer edition of the Bulletin. The report included membership statistics revealing that the Society grew by 21 members during 1989-90 to an all-time high of 222.

The Treasurer then presented his report. The assets of the Society had grown by \$333.90 during the year, and the year-end bank balance was \$13,028.83.

Pres. Hart reported on his activities during 1989-90. Noted was the appointment of three awards chairmen whose job was to promote the Society in their respective areas and to handle the provision of ESPHS awards to eligible exhibitors. Our participation at ROPEX was described. ESPHS had a table where information about the Society was available, and a regional meeting was held with a postal history presentation. Pres. Hart reported that he felt our activities at ROPEX were worthwhile.

Pres. Hart also reported that the List of Federal Post Offices in NYS was sold out, and we had inquired of APS whether we might reprint the post office list from the Smith and Kay book on NYS postal history. APS declined to grant us such permission as they still had a large inventory of Smith and Kay and did not want to undercut their efforts to sell that inventory.

Auction Manager George Bernadt spoke about the auctions. As usual, material is needed for the sales. All members with excess material are encouraged to turn those covers into cash by sending them to George for the auctions. George also explained that he does not use estimated values of lots in the auctions because such estimates do not have the benefits that are alleged. It was also noted that the auctions conducted during March and April tend to do poorly, maybe because of income tax conflicts. SEND YOUR EXTRA MATERIAL TO THE AUCTION MANAGER FOR THE ESPHS AUCTIONS.

Publications manager Jack Haefeli reported on publi-

cations. Kudos were given to Martin and David Margulis for improvements in the Bulletin. To George Bernadt for the very successful Society auctions which appear in the Bulletin regularly. Also to Bill and Nettie Seifert for processing the mailing of the Bulletin and other Society publications. It was announced that the updated roster was included with the summer 1990 Bulletin.

Jack reviewed progress on a couple of Society books. Dave Proulx's book, County and Postmaster Cancellations of NYS, is finished and was distributed to all members present. A supplement to the manuscript post office book is in preparation, and an index to all Bulletin articles is being prepared. Ken deLisle donated a full run of the Bulletin for Society use. The Dorothy Fielder book on Otsego County is undergoing revision which is expected to be done this summer. And finally, Jack identified the Publications Committee members and invited any other interested members to contact him if they want to help with the committee. A brief discussion ensued about the make-up of the committee. It was suggested that the committee's membership be formalized.

Bulletin Editor Martin Margulis reported on his activities. Articles for the Bulletin are always in demand, and everyone is encouraged to share their knowledge by writing items, long or short, for the paper. Martin gave credit to his son David for his valuable help in redoing and upgrading the Bulletin. A totally computerized Bulletin might be possible by October.

Use of the Trading Post column in the Bulletin was encouraged. Each member gets one free ad per year. Longer ads will be accepted under a new ad schedule. The Society needed an advertising manager. Thankfully Bill Seifert volunteered for the post.

La Posta had a nice write up on the ESPHS Bulletin. Illustrations for Bulletin articles should be supplied by a clear and clean photocopy or photo. Better yet send the editor the original and a scanner will be used to copy the picture directly into the Bulletin pages. He will then send your material directly back to you. They WILL NOT be sent to the printer!!!

Members of the Society who have not received a copy of Dave Proulx's book can receive one by writing to him directly. Second copies must be paid for.

Martin Margulis asked whether there was a Membership Committee. He agreed to chair such a committee and asked anyone interested in helping increase Society membership to contact him. Several dealer-members are giving out membership applications. Other members are distributing applications at shows which they attend.

Chairman of the Nominating Committee, Bob Harris announced the results of the committee's efforts. The committee consisted of Ann Triggie, Cliff Tuttle and Bob. The three nominees for Directors were Gerald Wiley,
(CONTINUED ON NEXT PAGE)

MINUTES OF MAY 6, 1990

(CONTINUED FROM PREVIOUS PAGE)

Louis Call, and Charles Edwards. A motion was made for the Secretary to cast one vote in favor of the slate. The motion passed and the slate was elected for a term of three years.

ESPHS participation at EMPEX was discussed. The show committee had offered a booth, but wanted it be manned for the full four days of the show. As this was not possible, the Society decided to forego the booth. The members were asked if they felt that a regional meeting should be held in conjunction with EMPEX. There was no support for such a meeting, so the idea was dropped.

This year, the semi-annual meeting will be held at Karrat's. A committee will be assigned by Pres. Hart to make plans for the special annual meeting in May, 1991 to mark the 25th anniversary of the Society.

Pres. Hart reported on the Executive Board's discussion on the reorganization of ESPHS. A discussion was held about whether to include discrete responsibilities in the by-laws or whether to use working guidelines. It was noted that Directors have no specific duties at present. Should the Society be reorganized with regional directors in place of general directors who now sit on the Executive Board?

Pres. Hart announced that he has assigned a committee to study questions of leadership and continuity. The committee consists of the 1992 directors, and is to report to the Executive Board in October, 1990.

The Treasurer presented the draft budget for 1990-91. This budget (published in the summer, 1990 edition of the Bulletin) calls for a deficit of \$2,740. The money would go for worthwhile and legitimate projects. A motion was made and passed to accept the budget as proposed.

Several new members who were in attendance were introduced. They were Steve Matte, Clyde Conrow and Charles Pace.

John Lange expressed the opinion that the publications of the Society are essential, and that the ESPHS should pursue publishing projects even when the cost might not be low. Martin M. said that he was looking into changing the Bulletin to a magazine format. With Jack H's help costs will be investigated.

Bill Hart's good work on behalf of the Society during the previous year was acknowledged. Thank you Bill. The meeting was adjourned at 2:47.

Maris Tirums

DUES FOR 1990 - 1991

A second dues notice for 1990-91 is enclosed only for those members from whom I have not yet received the current year's dues. If a dues notice is enclosed, please send your remittance as soon as possible. The dues are still \$5 per year. I hope to hear from every one of you in early November.

SOCIETY NEWS

NEW MEMBERS

We welcome the following as the newest members of the ESPHS:

Walter M. Christensen	Orla E. Loper
Richard J. Micchelli	Robert Motelow
Robert Outlaw	Ronald Pfeffer

MEMBERSHIP APPLICANTS

Krug, Don
P. O. Box 7102, Albany, NY 12224
Interests: postcards & DPO's of L. I. & Capital District
References: ESPHS member Forte & commercial reference

Boam, George
P. O. Box 66, Maspeth, NY 11378
Interests: NYS pre-cancels, US spec. cancels, Europe
References: APS

Caldwell, John W.
323 Meadowbrook Dr. Syracuse, NY 13210
Interests: postal history
References: ESPHS member M. Margulis

Coco, Raymond P.
P. O. Box 13014, Albany, NY 12212
Interests: classic US
References: APS

Conrow, Clyde R.
4 Clinton St., Sidney, NY 13838
Interests: Delaware Co., RR mat'l
References: ESPHS member Tuttle

Durick, Vincent J.
7270 Goodrich Rd., Clarence Center NY 14032
Interests: US pre 1880-stamps & covers
References: APS

Gettle, George Sr.
24 Orchard St., Ilion NY 13357
Interests: RPO's & HPO's
References: ESPHS member M. Margulis

Grunin, Louis
1 Trinity Pl, Spring Valley, NY 10977
Interests: NYC 1861-68 on 3 cent stamps; Mulready's
References: APS

(CONTINUED ON NEXT PAGE)

SOCIETY NEWS

(CONTINUED FROM PREVIOUS PAGE)

Lohrman, Richard F.
58 Main St, PO Box G, Franklin, NY 13775
Interests: none listed
References: ESPHS members Tuttle and Hulbert

Nykiel, Jerry
Box 217, Strouse Rd, Pine City, NY 14871
Interests: central NY & Finger Lake postal history
References: ESPHS member Forte

Prill, Ada M.
130 Trafalgar St, Rochester, NY 14619
Interests: Delaware Co. PH; Germany
References: APS

Werner, Anton E. F.
P. O. Box 486 Snyder Estate, Rosendale NY 12472
Interests: RPO's & RR mat'l
References: ESPHS member M. Margulis

Wheeldon, Ted
283 Esser Ave, Buffalo, NY 14207
Interests: origins of NYS place names
References: APS

ADDRESS CHANGES

Please note the following address changes. Only the new address is shown.

Roy Ahlquist 908 N. Quaker Lane Staatsburg, NY 12580	Agnes Cavalari RD 2, Bethlehem Rd New Windsor, NY 12553
Dorothy Fielder RR 1, Box 1038 Maryland, NY 12116	Arthur Fitzpatrick 4405 South Harbor Rd Southold NY 11971
George M. Gill 75 Zeb Corn Rd Hendersonville, NC 28792	Richard P. Hedley 120 Hedge Row Dr Orchard Park, NY 14127-4430
Gordon McHenry Box 1117 Osprey, FL 34229-1117	Dennis R. Mallory P.O. Box 5397 Glendale Heights, IL 60139
Nicholas Zevos Blanchard Rd Rte 5, Box 390 Potsdam, NY 13676	

RESIGNATIONS

The following have resigned their membership in the ESPHS effective immediately:

Julius Hubler
George Sehring

Harold J. Jonas

THE BALLSTON SPA POST OFFICE

BY JOHN LANGE

The Ballston post office was opened on April 13, 1800, Seth Baldwin was the first postmaster. In 1828 the name was changed to Ballston Centre and then quickly changed to South Ballston and then back to Ballston again. Joel Lee was now the postmaster.

According to Spafford's Gazetteer of the State of New York, Ballston was the county seat of Saratoga County. It was (and no doubt still is) 28 miles north of Albany. The township was formed in 1788 and was named after an early settler (1769) a Mr. Ball. At the time it was a milling center. The mills were on an outlet to Long Lake which also served a furnace. There were one or two distilleries. There were also six Protestant churches, and an academy, high school, as well as twenty-three elementary schools. Primarily, the township was farming country.

Ballston Village had the springs which were, according to the author, internationally famous. The academy was in the village as were the post office as well as about twenty-five houses stores etc.

The township population was 2,155, of whom 273 could vote. The valuation of the property in the township was about 300,000 dollars. (MM)

Ballston is one of several Saratoga County N.Y. "Ballstons" listed in Smith/Kay. There is Ballston, Ballston Centre, Ballston Center, Ballston Lake, Ballston Springs and South Ballston.

The two covers shown here are internally dated 1813 and 1814. In that time period "Ballston" and "Ballston Springs". They were the only Ballstons in existence at least as post offices.

The postmarks are somewhat puzzling. They both consist of circles with "Ballston N.Y." written in manuscript inside and around the curvature of the circle in the fashion of a later handstamp. These are entirely in red as is the ms PAID 8 and 17.

The 1813 cover shown, evidently was a wrapper with an enclosure. "Seth C Baldwin 16 April 1813" is written in one cover. The 24 1/2 rim circle is rather crude with what looks like several starts and stops and has a 4mm break. The contour (line thickness) of the circle is uneven.

The 1814 cover shown is a folded letter sheet with a short legal message signed by Jonathan Kellogg and dated 1814. The 28mm circle is in a thin line with three small breaks and it gives a printed appearance rather than drawn.

There are probably a few other covers still in existence that have similar markings. If so, the circle diameter and other characteristics of the circle such as line thickness and thickness variation, location and size of breaks would help establish whether the circles are consistent. Is there a direct relationship between the 24 1/2 mm circle, for example, and a coin of that period?

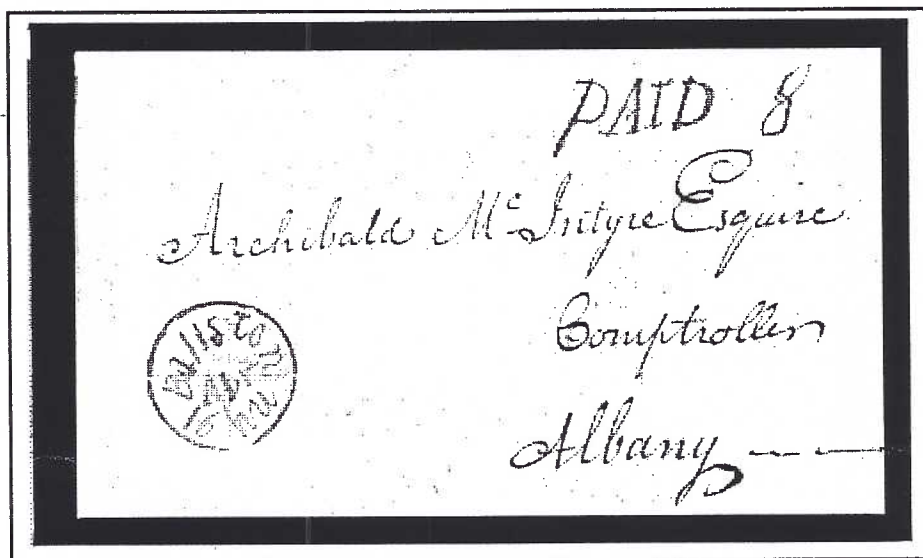
(CONTINUED ON NEXT PAGE)

THE BALLSTON SPA POST OFFICE BY JOHN LANGE

(CONTINUED FROM PREVIOUS PAGE)

SARATOGA COUNTY, N.Y.

BALLSTON



April 16, 1813

Manuscript town, and date, inscribed inside a "circle." The circle lacks the precision of the 28 mm circle and has an appearance similar to that which could be obtained by using a coin as a template.

This is a prepaid letter for the zone rate of "not over 40 mi." and was the zone rate (8¢) for a single letter

(CONTINUED ON NEXT PAGE)

THE BALLSTON SPA POST OFFICE BY JOHN LANGE

(CONTINUED FROM PREVIOUS PAGE)

SARATOGA COUNTY, N.Y.
BALLSTON



March 18 (1814)

Manuscript town, and date, inscribed inside a 28mm printed circle. This is a quite unusual method, as combinations of ms. town markings & hand-stamp circles, were rarely done.

The ms. "17" rate, also in red, denotes the zone rate for a single letter, when sent for a distance of 150 to 300 miles. This rate existed from March 2, 1799 to April 9, 1816, except for a short period between Feb. 1, 1815 to March 31, 1816 when the rates were increased 50%

AUCTION ACTION

Auction ManagerGEORGE BERNADT
1470 Wyoming Ave., Schenectady, N.Y. 12308

Bidders are reminded of the bidding increments for the ESPHS mail auctions. They are:

Up to \$ 5.00....25 cent increments
\$ 5.01 to \$20.00....50 cent increments
\$20.01 to \$35.00....\$1.00 increments
Over \$35.00....\$2.50 increments

Bidders are requested to settle their accounts as soon as possible after notification that they have successfully bid on (a) lot(s).

NOTICE!!

Please do NOT use post cards for your bids. They frequently take 7 to 10 days to arrive and have resulted in several of you having your bids arrive after lots have been mailed!!!!

IMPORTANT

Please, in sending payment for auction lots, STAMPS are not acceptable. Sending cash is not recommended. Do so at your own risk. There is much delay in sending payment. Please be prompt, for your auctioneer's sake!!!

George J. Bernadt

PRICES REALIZED SALE #66

1. \$ 8.00	25. \$11.50	50. \$ 2.00	75. \$ 8.00
2. 8.50	26. 21.00	51. 10.00	76. 7.50
3. 12.50	27. 3.00	52. 15.50	77. W
4. 3.00	28. 10.50	53. 8.00	78. W
5. 5.50	29. 3.25	54. 7.50	79. 6.50
6. 10.50	30. 4.50	55. 1.50	80. 8.50
7. 6.00	31. 15.00	56. 14.50	81. 12.00
8. 21.00	32. 23.50	57. 1.75	82. 10.00
9. 7.50	33. 18.00	58. 1.75	83. 5.50
10. 3.25	34. 13.00	59. 2.50	84. 5.00
11. 5.00	35. 3.25	60. 7.50	85. 3.00
12. 7.50	36. 3.25	61. 5.50	86. 10.00
12A. 3.25	37. 3.00	62. 1.75	87. 12.00
13. 7.50	38. 4.00	63. 12.50	88. 6.00
14. 2.50	39. 10.50	64. 4.25	89. 3.50
15. 4.25	40. 5.50	65. 3.00	90. 13.00
16. 3.00	41. 8.50	66. 11.50	91. 5.00
17. 2.75	42. 7.50	67. 12.00	92. 3.75
18. 4.25	43. 6.50	68. 11.00	93. 5.00
19. 4.00	44. 16.00	69. 11.00	94. 3.00
20. 16.00	45. 7.00	69A. 11.00	95. NB
21. 6.00	46. 6.00	70. 6.50	96. 5.50
22. 10.50	47. 6.50	71. NB	97. 5.50
22A. 7.00	48. 5.00	72. 10.50	98. 10.50
23. 7.50	49. 5.00	73. 12.50	TOTAL
24. 8.00	49A. 5.00	74. 1.25	SALE \$741.00

AUCTION SALE #67

1. 2 BUFFALO/MD/diN.Y.di in blue DODSs-1has msc 1 (drop let)datelined DEFIANCE 1836,other has msc F. Latter somewhat soiled & stained. FLSs w cont.

2. KINGSTON./MD/(N.Y.) in 37x28m red ODS w PAID in box & msc 12-1/2 on 1826 FLS..Has severe ffs...

3. LOWVILLE/MD/N.Y.in 31x24 DODS(sl blur) w msc Free on VF 1836 FLS. Cont refer to Black Riv Canal.

4. ROME NY/MD in part.dotted 27x20m ODS-bold strike w msc 12-1/2 on F 1827 FLS.Minor f thru str.

5. ROME NY/MD in part dot 27x19m ODS-clear str w msc 12-1/2 on 1832 FLS. Addr xed out & much docketed. Also has red ALBANY/MD CDS & PAID.Twice used item..

6. TROY/NY(NY week)/MD in or-red 40x27m dot ODS. Has msc 12-1/2 is datelined TROY FEMALE SEMINARY 1832 Has clear str on F+(ff) FLS...

7. ALBY(Yhi)N.Y. in 27m CDS(lt str) w msc 8 on VF 1803 FLS--Early!!

8. ALBANY/MD in bold 27m CDS w HS PAID & msc 37+ in huge 30m Cir on F+ 1813 FLS-Wear has made rim of PAID CDS look like 1 heavy line.Same used for years.

9. ALBY(Yhi)N.Y. in faint 27m CDS w huge HS PAID msc 17 in 30m Cir(as above lot)on sl aged 1809FLS

10. ALBANY/MD/-N.Y.-- in o-red 28m CDS(ft str) w HS 2(Drop Let) on VF 1846 FLS. Scarce rate!!!

11. 3 ALBANY items-2wALBANY/MD in or-red 26m CDSs w msc 12-1/2,Cont of 1 decribe conditions during Cholera epedemic,1 has HS PAID. 3rd has ALBANY/MD/-N.Y.-- in o-r 28m CDS, w cont signed by early ALBANY MAYOR. All are F FLSs-1828-1848...

12. MSC ATTLEBURY NY & 18+ on F FLS Datelined Stanford 1820. Contains long int letter..Scarce!!!

13. AUSABLE FORKS/MD/N.Y. in bold 28m CDSw HS PAID on VF(ff) legal size 1847 FLS..No contents..

14. BLACK-ROCK/MD/N.Y. in 30m CDS w msc 18+ on VF(ff) 1844 FLS.Cont re:purchase of confiscated ship!

15. 4 FLSs-CAMBRIDGE/MD/N.Y.-o-r CDS,1842; DANVILLE /MD/N.Y. o-r CDS w HS PAID & 10(lg size); Huge OGDENSBURGH N.Y./MD/3cts on soiled FLS & last, TROY/MD/ N.Y. in o-r on F+1842 FLS.

16. 2 JEFF CO items-CAPE VINCENT/MD/N.Y. in o-r 30m CDS w PAID/3-in-cir HS on v small,neat F ENV.2nd ADAMS/MD/N.Y. in o-r 29m CDS on 1835 F FLS-No cont.

17. 4 VF FLSs-JAMESTOWN/MD/N.Y.-o-r CDS w HS PAID-1839;CAZENOVIA/MD/N.Y. w HS PAID-1843 & 2 CANANDAIGUA/MD/N.Y. CDSs,both red-1 has HS 5-in-oval.A nice lot!

18. MSC CHAMPION/N.Y.MD & 18+ on sl aged 1820 FLS Contains long letter...

19. 2 CHESTERTOWN ITEMS-1 MSC CHESTERTOWN NY on oversized sl aged 1844 FLS w PM Fr-2nd has CDS of same & grid kil tying 3c #65 to sl aged ENV...

20. ETNA/MDY/N.Y. in 32m CDSw HS FREE W MARSH PM on sl aged ENV..Note year date(1859) in CDS!!!

21. 2 items-FORT ANN/MD/N.Y. in red 30m CDS (some let Lt) w HS PAID on sm embossed Lady's ENV.2nd has OGDENSBURGH/MD/N.Y. in o-r 31m CDS w msc 18+ F(ff).

22. 2 WARREN CO. MSCs-Glens Falls in mag ink w Paid 10 NYD.2nd-Warrensburgh & 5--Both are fronts only!!

23. GORHAM/MD/N.Y.(sm let) in 31m CDS w msc Paid 6 on sl aged 1843 FLS(ff thru str o/w F--!Scarce!!

24. MSC-Hampton NY/ND & 10 on sl aged F 1845 FLS! Contains long int letter!

25. HAVERSTRAW/MD/N Y in o-r 27m DCDS w msc free & P.M. Frank on sl soiled 1841 FLS--.

26. 4 items-LOCKPORT/MD/N.Y.in bold o-r 31m 1834 CDS w HS

AUCTION SALE #67

PAID msc 18+ w long let. 2nd LIMA/MD/N.Y. in o-r 30m CDS w HS PAID msc 18+, 1842 (front only) 3rd & 4th BATAVIA/MD/N.Y. in 31m o-r CDS & CANANDAIGUA/MD/N.Y. in o-r CDS have no cont. All clear str

27.3 FLSs-CANTON/MD/N.Y. in o-r 31m CDS w HS PAID 10-1845; 2 LOWVILLE/MD/N.Y. in o-r CDSs 1845-1 has 2 strikes dated a day apart?? An interesting lot!!!

28.2 MSC FLSs-New Castle NY & 10 on somewhat age worn 1845 cov w long let. 2nd Canton N.Y. & 18+ on F+ 1838 cov w cont...

29. NY "CLAMSHELL"-NEW YORK/MD in v fancy strike w msc 34 on F+ 1800 FLS (ffs). Cont datelnd BANK of N.Y.

30. NEW-YORK/MD/2cts in 35m o-r CDS-2 13m high on VF 1850 FLS. Cont datelined Philadelphia-A "BOOTLEG" Drop letter-An unusual cover!!!!

31. SHIP o-r HS o-r CDS NEW-YORK/MD & msc 20+ & via NEW YORK. Cont datelnd RIO DE JANERIO 1844. VF FLS!!!

32. NEW-YORK/SHIP/MD/7cts in clear o-r 35m CDS. Datelnd BUENOS AYRES 1848, on somewhat soiled FLS some breaks at folds...

33. N.Y. STEAMSHIP/MD/10 in 23m CDS w msc Due 10 cts on VF blue ENV...

34. Msc Steam Boat Mail 37-1/2 (red ink) w CDS NEW-YORK/MD o-r, 28m on F+ FLS-No contents--.

35. STEAMBOAT 32x3m Straight line, o-r. Lt but clear strike w msc 12 & v ft CDS of HARTFORD CT on F+ 1839 FLS. Cont long let w cross-hatch writing. Nice!

36. STEAM BOAT -- slightly blurred 42x4m St Ln w 5-in-circle on sl aged manila ENV

37. MSC-North Easton/md & 10 on F sl aged 1840 FLS

38. 2 MSC items-Oxbow N.Y./md & 6 on F+ 1832 FLS-2nd Cayuga, N.Y. & Paid 5 on VF 1848 FLS--!

39. MSC Pottersville/NY md & Paid 3-VF sl aged ENV.

40. RONDOUT/MD N.Y. in magenta 32-1/2m CDS w HS PAID & red HS 19 + HS red LIVERPOOL(ENG) rec CDS all on VF sl aged ENV.-1858. V unus. possibly unique item!!!!

41. V early MSC-SALEM NY/MD & 8 + "the PM will oblige Mr Corbit to forward this immediately" all on F sl aged 1808 FLS!!-Cont announcement Sheriffs Sale!!

42. SILVER CREEK/MD/N.Y. in 30m green CDS w HS PAID & msc 10 + v faint red U STATES/PAID/6c .X-border item! All on somewhat soiled & aged manila ENV..NYD...!!

43. MSC-STUYVESANT N.Y. & Paid 5 on F+ EN..Cont datelined Andover 1851.A v nice COL CO item!!

44. TRUXTON/MD/N.Y. in 30m green CDS w HS v lg outlined V(26m) on F(ff) 1851 FLS...Unlisted ASCC...

45. 3 FLS-ANGELICA/MD/N.Y. in o-r 29m CDS w msc 18+ No cont-2 has TICONDEROGA(ft)/MD/N.Y. & HS PAID on poor 1842 FLS. 3rd has WATERFORD/MD/NY(NY hi) in irreg 30m o-r CDS w msc 12-1/2 on F+ 1835 FLS. Latter has v int cont re: Mr. Taylors interst in Milling business!!!

46. WHITESTOWN/MD/N.Y. in 30m CDS w HS PAID msc 6 on VF(ff) 1841 FLS-Cont re: CANAL--!

47. MSC-YORKSHIRE NY/MDY & P.M. free on sl aged 1841 FLS..Has int letter..

48. WATERFORD/MD/N(NY hi) in o-r 30m CDS w HS PAID & msc 6 on twice used 1841 FLS w ALBANY/MD/-..N.Y.-.. o-r CDS w msc 6. Something different!!

49. MSC-NORTHFIELD Ct. & 5 on VF 1850 FLS...

49A. NEW ORLEANS/MD/La. in 30m CDS w Huge HS10(22x20) on VF 1849 FLS..

50. NEWBT(T hi) MS/MD in clear 16m CDS w msc 20 on VF(ff) 1808 FLS..

51. NEWARK/MD/N.J. in 30m o-r CDS w HS FREE & msc A Alling P.M. on VF(ff) 1835 FLS..

52. ORANGE/MD/N.J. in o-r 30m CDS (just off at top) w HS PAID & lg 5 on VF tiny 1834 FLS-Unusual!!

53. PRINCETON,N.J./MD in 29m CDS w msc 15 on VF 1815 FLS..Contents long personal letter..

54. HARRISBURG/MD/PENN(PENN hollow letters) in irreg 29m o-r CDS w msc 30 on VF 1830 FLS-Bank letter!!

55. PROV.R.I. in bold 26m CDS w msc 10 on VF 1801 FLS. Very early item!!!

56. #1, almost 4 marg (just touches outer frame at bottom left) on VF addr sheet docketed 9/25/48. Tied by light, o-r BOSTON CDS & grid..LOVELY!!!!

57. S-o-n CDS-FORT COVINGTON/MD/N.Y. ties almost 4 marg #11 to VF ENV...Nice!!

58. 2 GLENS FALLS items-S-o-n GLENN'S FALLS/MD/N.Y. CDS ties almost 4 marg #11 to VF ENV; 2nd has unusual tar kil tying 2 c br BN w 1884 GLENS FALLS CDS to VF small ENV...

59. 3 F+ ENVs w F #11s (3 diff shades) each neatly tied clear CDSs-1 blue....!!!

60. 2 unus items-1 has almost 4 marg pen-canc #11 w MSC-MOOERS FORKS & misst + o-r CDS-of CHARLTON, MAS. Addr to CHARLTON, NY. 2nd has F+ pen-canc #26 w MSC-KEENEY SETTLEMENT/NY MD..Both on F sl aged ENV

61. Huge 36m NORTH WHITE CREEK/MD/N.Y. CDS ties VF #26 to embossed Lady's F+ ENV. Scarce WASH Co DPO..

61A. ONEONTA/MD/N.Y. in blue 30m CDS HS PAID & bold 6-in-cir. on VF lg ENV-A GEM!!!!

62. 3 BOSTON items-2 have red BOSTON CDSs & lg black GRIDS w PAID therein tying VF #11s-1 has cont. 3rd is stpls FLS w ft BOSTON/MD.5CTS & dated 1850...

63. Pair 1c #24(o/c) on 1860 FLS to Switzerland tied by blurred NEW ORLEANS CDS w red French transit CDS & crayon 20 + msc By Steamer for Europe.

64. 3 items-MSC AVOCA ties #26 to bedruggles Lady's ENV. 2nd has red 1860 BOSTON CDS w lg PAID-in Grid tying #26 to VF ENV w HS cc. 3rd has blue BATH/MD/N.Y. on F+ #U10 Entire...

65. 4 F+ ENVs w #26s:-ELBA,NY;PULASKI,NY;MADRID,NY & CLIFTON NY (latter in blue)-A neat lot!!!

66. 5 ENVs w #26s:-WEST POINT;WOLCOT;SCHUYLER FALLS etc..Very collectable!!

67. X-BORDER item-OSWEGO/MDY/N.Y. in lg CDS on F #U16a ENT. Has faint sl U STATES & Canada bkstp..

69. CHATHAM 4 CORNERS/MD/N.Y. as forwarding CDS on F+ 1863 ENV w SACKETS HARBOR/MD/N.Y. CDS & msc Forwd Has #65 tied by sl smeared black grid killer.

70. GREENWICH/MD/N.Y. in lg CDS w bold STAR-IN-CIRCLE kil tying #65 to VF ENV...

71. S-o-n US-IN-CIRCLE on #65 w KEESEVILLE/MD/N.Y. CDS on VF ENV-A nice item for Fan. Kil collector!!

72. LONG ISLAND CITY/MD/N.Y. in 32m CDS w partial NYC CDS & lg 4 pointed fancy STAR-IN-CIRCLE kil S & E #GE-C116 tying #65 to VF sl aged ENV. Has conts!!

73. 5 Cows w #65s-All have NYC CDSs & semi-fancy cork killers on somewhat worn & soiled ENVs..

74. 4 Cows w #65s:-NEW SCOTLAND/MD/N.Y.;BEDFORD STATION/MD/N.Y.;TOWANDA/MD/PA DCDS;& PHILAD'A CDS w solid cork MALTESE CROSS kil.A v nice lot!!!

75. 2 #65 items-1 tied by 8 seg cork kil-other has pair tied by OSWEGO,NY CDS w Fancy cc on lg ENV...

76. Lot of 5 ENVs w #65s-2 have ccs..

77. 4 ENVs w #65s & SOUTH WESTERLO/MD/N.Y. in lg 37m CDSs w oval grill killers...A scarce mkg.!!

78. Large block letter L ties #65 to somewhat soiled and penciled on ENV w LITCHFIELD CT CDS..!

AUCTION SALE #67

79. FANCY bold GEOMETRIC type kil & LOUISVILLE, KY CDS tie #65 to sl aged orange ENV. Lovely!!!

80. AUBURNDALE, MASS/MD/1863 in 34m DCDS (inner line FANCY) & PAID/3-in-cir tying #65 to neat sm ENV...!

81. 3 #65s (pr & single) each w bold PAID HS. On F+ orange ENV w NEPONSET VILLAGE/MD/MASS. in 32m CDS!!!

82. 3 covs w #65s: 1 tied by cork kil has CANTON MASS/MD/PAID CDS. 2nd has lg 1863 PHILADELPHIA Pa CDS & tied by lg grid kil & 3rd blurred OMAHA CITY/MD/NEB & target killer on F orange ENV...

83. 2 VF #65 ENVs w s-o-n bold HS PAIDS (1 blue) GEMS!

84. 2 PA. items w #65s-1 has ROUSEVILLE CDS & odd tar kil. 2nd has sl blurred PHILADA, PA/MDY/POST OFFICE in DCDS. Both on sl aged ENVs...

85. 3 #65s + #63 w s-o-n PAIDS on somewhat soiled orange ENV (flap missing) w CALEDONIA/MD/? CDS & almost invisible partial U.S. STATES/PAID-in-oval to Can.

86. #73 "Black Jack" w better than ave cent. tied by PROVIDENCE, R.I. CDS. Has lg cc of AMERICAN SCREW CO. on flap. All on F+ sl aged ENV...!

87. THOUSAND ISLAND PARK/MD 1880/Jeff. Co. N.Y. w STAR-IN-CIR. kil on VF #UX5 PC. Both are clear magenta str

88. 3 items w CONEY ISLAND, NY CDSs-2 have 2c gr BNs w diff strikes (1 magenta) & 1 on #UX9 PC...

89. 4 covs w STAR killers-Bold STAR-IN-CIR on 2c Col #231; 2 diff STAR kils w lg MECHLENBURGH, NY CDSs tying 3c gr BNs & 4. Has 4 pointed STAR tying 3c gr BN...

90. Huge 5 pointed STAR w NYC CDS & cc all on F+ 3c green ENTIRE... Striking!!

91. Lg negative N tying 2c br BN w 1884 CDS of NUNDA, N.Y. to F+ ENV...

92. RR & overcass item-Pr 3c gr BNs w NY & WASH/MD/R.P.O. & o-r NYC transit CDS + o-r LONDON/PAID CDS!!

93. POUGHKEEPSIE, NY 1884 CDS ties 2c br BN w pre-can #J16 & huge 31m magenta DUE/2-in-cir. V v unusual!!!

94. Neg let EAH (for Eugene Aaron Hinds, PM) on somewhat soiled 3c gr ENT w ft RICHFIELD SPRINGS CDS. V sl shortened at left in opening. Initials in kil v clear!

95. Neg TOP HAT (in solid vert oval) of DANBURY, CT. tying VF 3c gr BN to neat ENV w DANBURY CDS!!!

96. 3 prs (6) 2c org BNs + 10c br BN (corner torn off) on what was extremely lg somewhat soiled ENV trimmed at both ends w DLDS NORTHVILLE/MDY/Spink Co. Dakota!!!

97. 5c blue TAYLOR BN #179 or #185 tied by o-r transit CDS w cork kil on VF ENV addr to BERLIN, PRUSSIA

98. VF 5c blue ENT w 5c blue TAYLOR BN added tied by NYC CDS on VF ENV. Has several foreign HSs etc. NICE!!

99. DEER RIVER, NY 1896 CDS w 8c #257 or 273 tied to VF 2c gr ENT... Has magenta Registry backstamps...!!

100. 4 items-2c red sm BN tied to embossed VALENTINE ENV by 1897 NYC CDS. Other 3 items are #U58 ENTs w diff NYC cork killers... latter somewhat aged & rough!

101. ADV cov w illustration of HUNGERFORD COLLEGIATE INSTITUTE, captioned ADAMS, JEFF. CO., N.Y. has 3c gr BN tied by ADAMS CDS. A F+ JEFF. CO. item!!!

102. 5 covs w int ccs, including 1 w LOCK BOX #, another w illust of VERMONT Coat of Arms-1882-1903...

103. Adv PC, #UX5, unused w lg illus of a EAR OF CORN, etc. VF & int ALBANY, NY item...

104. Illus Hotel Adv Cov-Has fancy CROSSMON'S/THOUSAND ISLANDS, N.Y. etc. w 2 1c #300s tied by ALEXANDRIA BAY CDS. to VF ENV...

105. 2 BUFFALO ADV covs-1 has blue illus of a BUFFALO under

cc at left w 1913 CDS tyin 2c WASH HEAD to VF ENV. 2nd has on rev, GREEN overall sketch of an OAK-LEAF w caption OAK-LEAF/SOAP on 2c gr ENT of 1892 w CDS of 1892-some closed tears at upper left).

106. CLAVERACK/MDY/N.Y. in lg magenta CDS tying 2c br BN to VF ENV w cc of CLAVERACK COLLEGE/AND/HUDSON RIVER INSTITUTE/CLAVERACK, COL. CO., N.Y.-1885!!

107. DEPOSIT WANTS YOU, in lg let, is beging of long message extolling the advantages of establishing there. All this on rev of VF ENV w 1904 DEPOSIT CDS w #301 w cc. Talk about unusual ADV covs!!!

108. ADV cov-THE C.E. MORRELL CO./HOTEL BILLS OF FARE/ELMIRA, N.Y. in brown & tan, embossed Adv across most of VF ENV w 1899 ELMIRA FLAG cany tying 2c red. NEAT!!

109. STRIKING, dk green, overall illus ADV of SHOOT'S VINTON & CO/MANF/OF/WATER PIPES w CDS of HORSEHEADS N.Y. & 1c blue BN-A REAL GEM! Incl sketch CHAIN PUMP!

110. Lg photo of old WARREN ST. (unpaved) etc w cap-150th ANNIV/OLD AND HIST/HUDSON, N.Y., etc. etc. 1938 CDS of KINDERHOOK ties 8c Prexy w penciled "First day of sale at home of Martin VanBuren" All on VF ENV!!

111. 4 covs-3 have lg illus ccs. All from BN period & somewhat soiled & worn. Still highly collectable--!

112. Overall lt brown ADV cov of MERCHANT'S PROTECTIVE UNION w lg unusual Illus. This early (1868) cov w #65 tied by grid & CDS of NYC. Top somewhat ragged from opening. Cont pristine yel pre-addr ENV w same Illus-Again, a v unusual item!!!

113. 6 ENVs w lg fancy Illus ccs w NYC CDSs-1 pictures SEWING MACHINE another, a lg pr of SISSORS; etc. Mostly BN period... A v worthwhile lot!!!

114. 2 ADV covs-1 has lg Illus of HOTEL w lg fancy DOOLITTLE HOUSE/OSWEGO, N.Y. w 1888 OSWEGO, NY CDS tying 2c gr BN to VF ENV-2nd illus cc of GEO BEEBE on 2c gr ENT (rough at left) w 1890 PENN YAN CDS...

115. 2c Columbian tied by TROY, NY CDS to sl aged ENV w cc & on rev, overall ADV of GARGLING OIL, etc., etc..

116. ADV cov w lg illus of 5 story bldg w caption- The E.S. KIBBE CO., etc., etc.. Has 1897 sl mach cany of HARTFORD, CONN tying 2c red to VF ENV. Has illus cont.

117. 3 Covs w lg illus ccs. All are VF. 1892-1929..

118. Lg oval photographic cc picturing several ancient AUTOS & cap HOTEL DEL MONTE... Has 1906 CDS of DELMONTE CAL. tying #319 to sl aged ENV. Possibly unique!!!

119. Lg illus ADV cov (across 3/4 of face). Pictures lg bldg & fancy BOND BROS/FRUIT & PRODUCE etc. SPRINGFIELD, MASS. w 1908 mach cany of same tying #219-VF ENV

120. HALE & COs #75L5, cut to shape, properly tied by red box to F sl soiled 1845 FLS (ff thru stamp) Has msc Paid p Hale & C. Addr to PHILA. (not often seen)..

121. WW I patriotic w with multi-col FLAG-ON-STAFF at left on F ARMY & NAVY DEPT/YMCA ENV w 2c WASH HEAD tied by 8/20/17 CDS of FORT SNELLING, MINN..

122. Similar to above but w 3c WASH HEAD tied by FITCHBURG, MASS/11-15-17/DEVENS BRANCH (Fort?) -The U.S. 1st Class rate changed to 3c on 11-2-17-A unusual pr!

123. A COMBINED BID ON THE PRECEEDING 2 LOTS WILL BE HONORED IF SAME EXCEEDS TOTAL REALIZED FOR INDIV LOTS

124. #C4 tied by 1924 CDS slogan kil to F sl aged AIR MAIL env w mag HS-VIA U.S. AIR MAIL/TRANSCONTINENTAL. Addr to Pres. & founder of AAMS...

125. 4 unusual Covs w BROOKLYN, NY CDSs-1 has weird cach commem construction of 1st ARMY TANK at ROME, ITALY in 55 B.C. 2nd has lg blue cach commem "MONITOR DAY" 3/9/35. 3rd has lg mult-col cach JEFFERSON'S birth 4th has -1/2 4c TAFT #685 used properly(?) as 1st class postage in 1930. A highly attractive F+ Lot!!

AUCTION SALE #67

126. 3 DPO items-WEST FARMS,NY CDS ties #26 to worn ENV(has Cont).2nd has 2c COL.w ft SHENANDOAH,NY CDS. 3rd is #UX22 w MOUNT ROSS,NY DOANE canc-VF..

127. 13c WASH HEAD+ONE CENT FRANK HEAD tied by DODS of OSWEGO to VF Regis Stamp Dirs Cov.Has msc cc of C S SHELDON former head of OSWEGO NORMAL SCHOOL forerunner of S.U.C.O.of which SHELDON HALL named for him!!

128. 6 PREXY cov-3 w -1/2c(2 w 6,1 w 2);1 w single 1-1/2c; another is Regis HOTEL ITHACA illus ADV cov & last is Regis cacheted FDC of 24c--All are VF--!

128A Scarce-R.F.D.SEP181908P.M.BLUFFPOINTN.Y.onF+ PPC

129. Prexy item-Auxiliary HS-RECEIVED AT ALBANY,N.Y. NOT BACK-STAMPED on Regis 3c ENT w 20c Prexy-Unus!!

130. MSC-PETROLIA,NY DPO on somewhat soiled #UX12 PC Very SCARCE DPO of Allegany Co.

131. 3 DOANE canc items-1 VF ENV has TRUDEAU,NY w 2 in bars.2nd PPC w view of HURRICANE/LODGE/IN ADIRONDACKS & HURRICANE,NY DOANE & 3rd is PPC w UNDER-CLIFF, NY w 2 in bars used as rec pmk.All are DPOs!!

132. 2 DOANE items-HAM.CO.DPOs-1 has MOREHOUSEVILLE w 3 in bars other pictures CASINO. THE ANTLERS * has ANTLERS,NY w double line bars. Both scarce!!!

133. 2 MONT CO. Doanes-CRANESVILLE,NY tying 2c #329 to VF ENV. 2nd is SPRAKERS,NY on VF PPC...!

134. DOANE canc on 2 VF PPCs- PRESHO,NY & PLAINSVILLE,NY..bOth are DPOs...!

135. MOHONK LAKE,NY in 1921 TIME CUMMINS Oval mach canc on PPC--Scarce!!!

136. V RARE R.F.D. FLAG canc-Mooers Forks,N.Y./MAR24 1910/R.F.D. No.1 & FLAG instead of bars tying TWO CENT WASH HEAD to F+ ENV.. Owners est. \$40+

137. Scarce DPO-OSCAWANA,NY CDS ties 2c WASH to VF PC

138. PRIVATE MAILING CARD has 1915 FLAG canc of BENNINGTON,VT.-VF w picture of BENNINGTON P.O. Bldg.

139. BROOKLYN NY CIRCUIT/TR16/NOV/10/1904/ R.P.O.used as rec CDS on addr side of VF PPC.Street Car canc.

140. TRUTHVILLE/DEC/31/A.M./1953/N.Y. w bars killing 2c stamp on LAST DAY of this WASH CO DPO. On VF card autographed by last PM.

141. 6 diff ENVs w 1890-99 2c reds. Noticed-STONE MILLS; NUMBER FOUR;THREE MILE BAY etc.All NYS-F!!

142. 6 JEFF CO BN covs-Lg mag CDS of CHAUMONT w fancy oval kil;ADAMS w HUSON HOUSE cc;NATURAL BRIDGE; CHAMPION;etc. All VF ENVs!!!

143. 6 items w Fancy kils-mostly STARS-CLAYTON,NY; UNION SPRINGS,NY;VERNON CENTRE,NY;etc.-3 are ENTs, 2 are Postal Cards & 1 ENV(minor closed tear)F-VF!

144. 22 covs w HOTEL ccs many illus,some are Air Mail, several are Special Del.,some have conts, mostly F-VF..1899-1937.

145. 1st afternoon-night Flight-CAM 20--A complete Route set of 7 Air Mail covs.All VF w #CA11s--!

146. PRESIDENT'S WIDOW'S Free Frank-Mary Lord HARRISON--on VF sm ENV w 1914 CDS..UNUSUAL!!!!

147. MULREADY LET SHEET w orange MALTESE CROSS KIL Bkstdpd JY 11 1840--F+ --No cont...

148. V early ITALY-Pr #27a on VF 1867 FLS.Bkstdpd..

149. 2 v early ITALY-Both have #35 on VF FLS-1 w ROVIGO,1873 HS,other w CENTO,1872 HS.Both w ov ccs!

150. Another V early ITALY-w #36 in unusual v light blue shade. Has 1868 PADOVA CDS & blue DO cc.!

DEADLINE FOR BIDS DEC 7, '90

EMPIRE STATE POSTAL HISTORY SOCIETY

P.O. Box 5475

Albany, NY 12205



FIRST CLASS MAIL



David Przepiora
187 Meadowbrook Pky
Cheektowaga, NY

14206-2422