

**EMPIRE STATE**

**POSTAL HISTORY**

**SOCIETY**

**FOUNDED 1967**

**BULLETIN**

**WINTER 1989**

**POSTAL HISTORY RESEARCH SOURCES**  
by Martin Margulis

In a recent letter which I received from ESPHS member Charles Edwards, he mentioned sources of material which he gathered in writing two postal history articles which he also sent (to be published next issue). Among them he notes the NY Historical Library in Cooperstown and county and local historical societies.

I known from my own experience that NYS is rich in resources which are pertinent to historical research. For example in NY City we have the NY Historical Society, the Forty-Second Street Branch of the NY Public Library (hereafter called simply the NY Public Library) as well as historical societies in each borough.

For state-wide sources, each county and town in the state has an historian. They are often quite knowledgable about area history. Most know very little about postal history. This is not, however, always the case. The Orange County historian, Mr. Theodore Sly, had a mother who was postmistress of a small Orange County post office.

If you are writing an article on

social history, with some reference to postal matters, these sources will usually suffice. However if you dealing more fully with postal matters more is needed.

In the Fall issue of the Philatelic Literature Review, the journal of the American Philatelic Research Library, Mr. Steven Rod wrote an article on sources of postal history. In it he lists eight philatelic libraries, a few dealers in philatelic books and a directory of philatelic literature resources (ten of them).

One of the listed libraries, the American Philatelic Research Library, has a lending facility. Those interested may write to them at PO Box 8338, State College, PA 16801 to find out about and borrow books and articles relevant to their research needs. Loans can also be made through your local library. There is a modest fee for a search for what you may need. Full information is available on request.

Another resource mentioned is the Collectors Club of NY library. It is open free to the public two or three weekdays.

(CONTINUED ON P.6)

## EDITOR'S MESSAGE

Unsurprisingly, things are not always what they seem. Elsewhere I mention county historians and town historians. None is well paid, some it seems, are not paid at all. Some have clerical help, other have no funds for staff. Some owe their positions, at least in part, to a background history. Others are chosen for other considerations.

Cornell University is researching a book(let) on the resources available within each of our counties for historic research. When I get more information about what department is researching the book and when it will be available I will send for the book and give you the information necessary to allow you to do the same, if you are so inclined.

I have received a book of all the county town and city historians, and their addresses. I plan to publish some in the Bulletin over a number of issues. I would appreciate it if you would send me information about resources within your town and/or county which you have utilized when doing historical research.

If we all pool our information, it may make it possible for more of our readers to become writers. Writing non-fiction does not require any great skill or creativity. The main requirements are to take the time to do the necessary research and then to spend the time to write up the material.

And remember, anyone interested in the history of New York State or its localities is a potential ESPHS member.

Martin Margulis

## THE BULLETIN

is published by the

## EMPIRE STATE POSTAL HISTORY SOCIETY

P O Box 5475  
Albany, N.Y. 12205

All articles for the Bulletin must be sent to the editor:  
Martin Margulis  
1368 Metropolitan Ave.  
Bronx, N.Y. 10462

All advertising, except auction business, is to be mailed to the Albany address above.

Annual dues.... \$5.00

### Officers and Committee Chairman

PRESIDENT  
VICE PRESIDENT  
SECRETARY-TREASURER  
DIRECTORS  
(89)

JACK HAEFELI  
NICK TODARO  
MARIS TIRUMS

(90)

J. BURTON HULBERT  
ROGER KLINE  
CHARLES SWEETING  
HENRY CHLANDA  
CLIFF TUTTLE  
EMMA KOBERG  
MARTIN MARGULIS  
DAVID PROULX

(91)

ADVERTISING MANAGER  
AUCTION MANAGER  
BULLETIN EDITOR  
ASSOCIATE EDITOR  
REGIONAL DIRECTOR  
A.P.S. REPRESENTATIVE  
SOUTHERN COORDINATOR  
CAPITAL COORDINATOR  
CENTRAL COORDINATOR  
FINANCE  
PUBLICATIONS  
PUBLICITY

J BURTON HULBERT  
GEORGE BERNADT  
MARTIN MARGULIS  
DAVID MARGULIS  
EMMA KOBERG  
EMMA KOBERG  
MARTIN MARGULIS  
BILL SEIFERT  
DAVID PROULX  
MARIS TIRUMS  
WILLIAM SEIFERT  
J BURTON HULBERT

ESPHS Dealers! Consider advertising in our BULLETIN!!! If you sell postal history or related items it would be hard to find a publication anywhere delivering more serious collectors per dollar. Also, you will be helping support the society while getting your message across to our readers who are active collectors and buyers. The rates are as follows:

Full Page      \$18.00 per issue  
Quarter Page    \$5.00 per issue

Half Page      \$10.00 per issue  
Sixth Page     \$3.50 per issue

A 10% discount is allowed for four consecutive issues (one year) paid in advance. For more information or to mail advertisements use the above address. Hope to see you in the next issue!!!!

**The 1869 Pictorial Issue  
as used in STATEN ISLAND  
(Richmond County NY)**

By: Brad Arch  
with contributions by:  
Robert Miller



This interesting series of 10 denominations was introduced during the latter part of March 1869 starting with the three lowest denominations, with the higher denominations being released in the following months. The series was in nominal use until the fall of 1870, although several denominations of the 'banknote' series had already been introduced earlier in 1870 as eventual replacements.

Known usages from the island includes only the 3¢, 6¢, 10¢ & 12¢. Covers have as yet been reported with the 1¢, 2¢, 15¢, 24¢, 30¢, and there is currently no known cover bearing the 90¢ stamp from anywhere, there once was one cover known, but it was stolen more than 10 years ago and has not as yet reappeared.

Although there are no recorded usages of the 1¢ & 2¢ stamps there must be some covers in existence paying the drop letter or printed matter rates that have not been deemed important enough to be recorded up to this time.



The most commonly used denomination was the 3¢ which is known used from four post offices out of the fifteen post offices that were in operation during the period of the stamps availability; and the higher denominations are only recorded with one cover as an example of each.

A specialty society is in existence, known as "The 1869 Pictorial Research associates" which has been researching and publishing informative articles and books concerning these stamps and their use for the past 15 years mostly through their quarterly journal "The 1869 TIMES". I can provide information and/or membership applications to anyone who may be interested in joining this group, for an SASE. Brad Arch, 144 Hamilton Avenue, Clifton NJ 07011

**1869 Issue Recorded Usages from STATEN ISLAND**

7/27/??	3¢ & 3¢	Richmond NY to New York NY
6/28/??	3¢	Rossville NY to New York NY
4/19/??	3¢	Stapleton NY to Rossville SI
6/30/??	3¢	Stapleton NY to Perry Center NY
7/16/??	3¢	Stapleton NY to New York NY
4/13/70	6¢	New Brighton NY to Halifax, Yorkshire, England
4/ 5/70	10¢	Rossville NY to Hanover, Germany
10/22/69	12¢	Stapleton NY to Queenstown, Ireland

I look forward to receiving additional reports of all Staten Island usages of the 1869 Pictorial Issues, accompanied by clear high-contrast Xeroxs. Thanks; Brad Arch



6¢ stamp  
NEW BRIGHTON  
NY

Paying 6¢  
Letter Rate  
to England  
in 1870.

Mr. John Law  
1 Silver Street (Chambers)  
Halifax  
Yorkshire  
England.



W. A. Church  
Attorney No 14 Wall St  
York



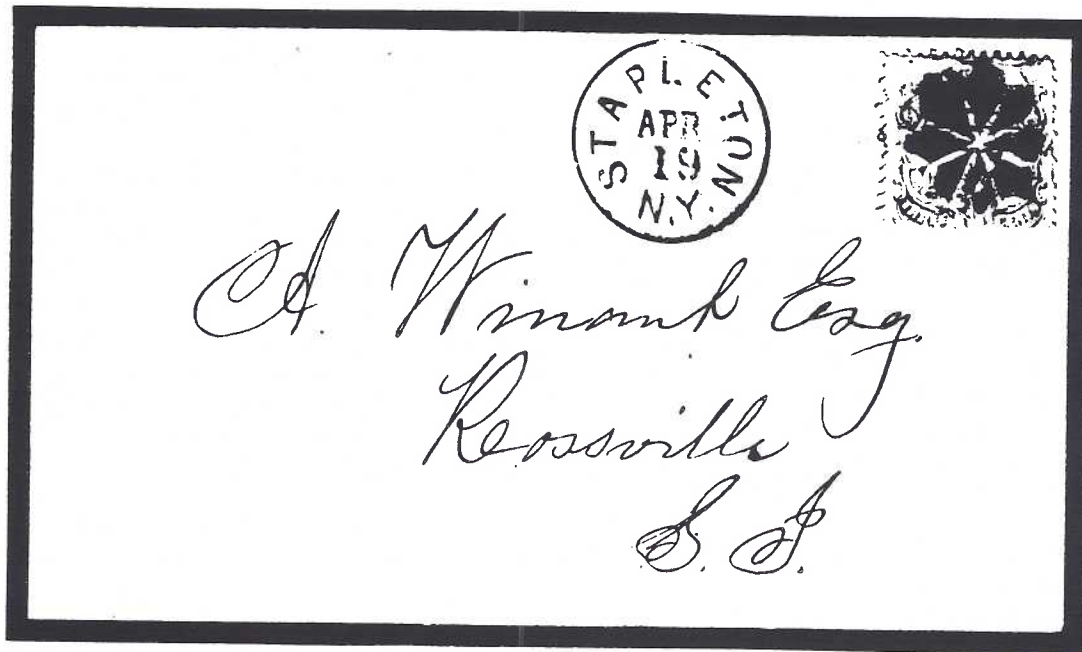
Wm. L. Lantry Esq  
6 Pine St N.Y.

3¢ & 3¢ stamps  
RICHMOND NY

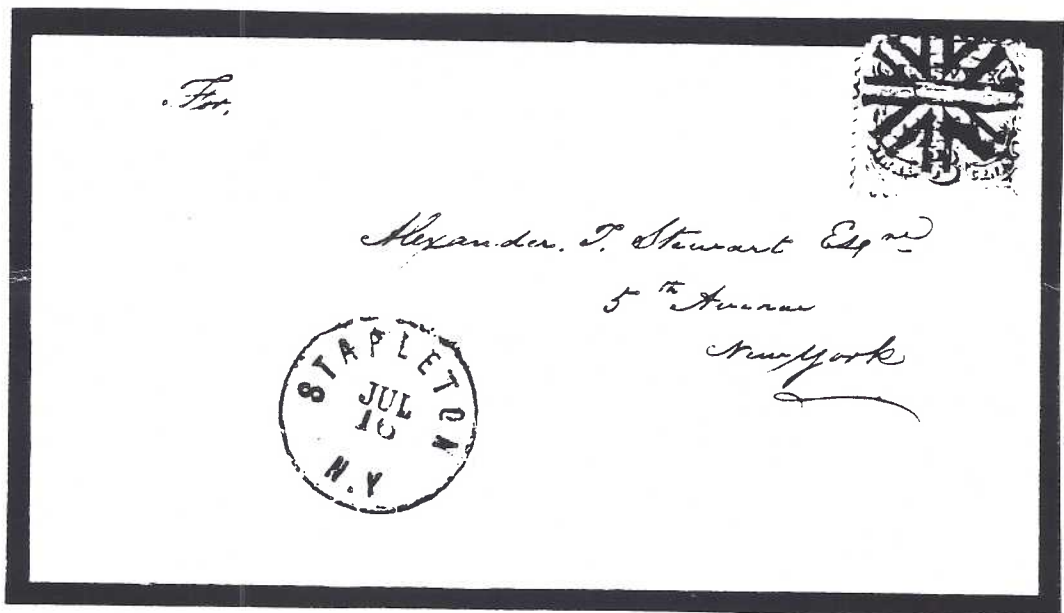
Paying Double  
Weight (3¢x2)  
Domestic Letter  
Rate

3¢ stamp  
ROSSVILLE NY

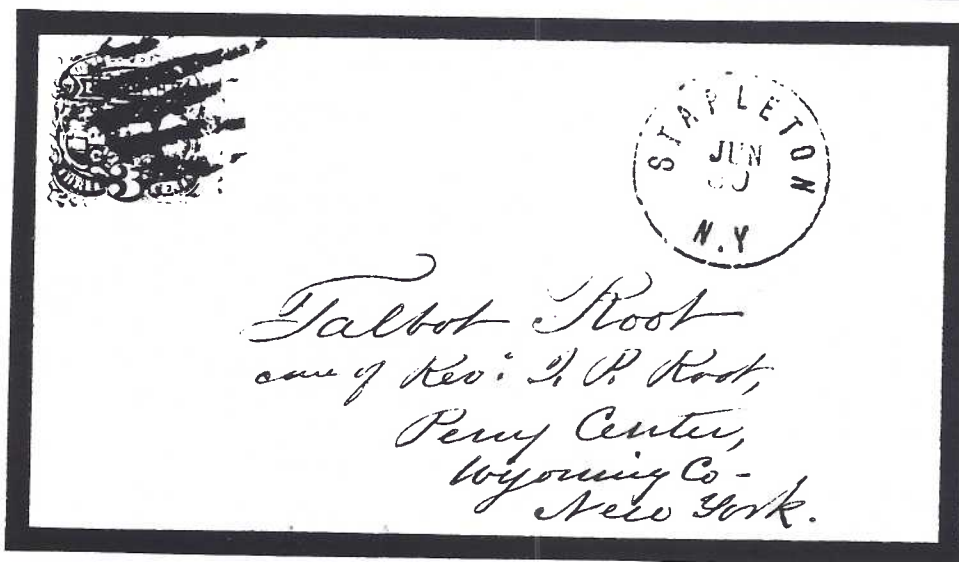
"Sheriffs Office"  
Corner Card



3¢ stamp  
 STAPLETON NY  
 Paying 3¢  
 Domestic Letter  
 Rate  
 Large Letters  
 CDS  
 Circle of 8  
 Diamonds Killer



3¢ stamp  
 STAPLETON NY  
 Paying 3¢  
 Domestic Letter  
 Rate  
 Small Letters  
 CDS  
 Circle of 8  
 "V"'s Killer



3¢ stamp  
 STAPLETON NY  
 Paying 3¢ Domestic  
 Letter Rate  
 Simple Grid Killer

## Research Sources (Continued From P.1)

It is located at 22 E. 35th St., New York, NY 10022.

The NYS Department of Transportation (B220 Washington Ave, NYS Campus, Albany, NY 12232) is a resource for county and state-wide maps available through them and also through county road departments. It also has a division which has old maps of NYS and its localities which is on a par with the map room of the NY Public Library. Write to them for information on what is available.

The NY Public Library's map collection is excellent and I have often made use of it in obtaining comparatively low cost (about \$15) photographs (not photocopies) of county and regional maps going back to the 1820's. Some of the early maps photograph very poorly because of the way that they were printed. Some are in such poor condition that they will not photograph at all. Nevertheless just seeing the maps may provide you with information vital to your research.

The Economics Section at the Library has books recording the mail routes voted by Congress from 1792 on. This section also has microfilms of all the US Censuses and Sub-censuses. Viewing machines for these are usually available on a drop in basis. The Library also has a vast collection of early photographs of NYC and environs which are available for use and reproduction.

The Museum of the City of NY and the NY Historical Society also have photograph collections. The former, I assume, covers primarily what is now NYC while the latter is state-wide.

Probably the best place to obtain primary source material about pertaining to US history, postal and otherwise, is the National Archives in Washington, DC. John Kay has made extensive use of them in researching his Post Office and RR Agent books. Mr Kay tells me that it is best to make an appointment before going to use the facilities in order to avoid a long wait for service. Facilities for photocopying are available at a very nominal fee. I will

write more about this in future articles.

Lastly I will present two commercial sources of information. "'a Gatherin'", the business of member Robert Dalton Harris, has vast postal history resources. This is a resource that I use quite often. It is a commercial enterprise, and hence expensive, but going to Washington D.C. to use the National Archives and staying there is expensive too. Write to him to find out what is available in your area of interest and how much photocopies of relevant source material will cost. He can be reached at PO Box 175, Wynantskill, NY 12198.

The second commercial enterprise is The Printer's Stone, Ltd. at Box 30, Fishkill, NY 12524, a new source for postal history. Very little of it is on NYS but the owner, Arthur H. Groten, M.D., has expressed an interest in producing a book on NYS postal history. Write to him if you have an interest in this project or for a list of what material he has available for sale. Many of you have interests in areas other than NY and he may have something of value to you.

Be forewarned that I am planning to return to this subject of postal history resources as I never really discussed either the National Archives or Mr. Rod's article (which he has kindly given me permission to reprint in our Bulletin). Your own experiences in this area would be most welcome and providing them to me might even get your name in print.





CLYDE  
Monroe County, New York

by  
Emma Koberg

*Camillus*  
*legde to N.Y.N.*  
*Phillips Esq*  
*Merchant*  
*Quebec*  
1824

A POST OFFICE named Clyde was established in Ontario County June 15, 1819 at a settlement called Carthage. It became a part of Monroe County February 23, 1821. Elisha B. Strong was the first Postmaster and served until 1829. The Post Office at this location was discontinued in 1832.

The above letter was mailed from Clyde March 16, From New York April 27, and arrivrd in Quebec May 10, 1824. Ship "CAMILLUS" was of the Atlantic coast fleet. Rate under the act of 1816 was  $18\frac{1}{2}$  cents from 150 to 400 miles, plus 2 cents ship fee equals  $20\frac{1}{2}$  cents. Canadian marking equal to Canadian currency  $1/1$  plus postage from the line  $1/$  total  $2/1$  to collect.

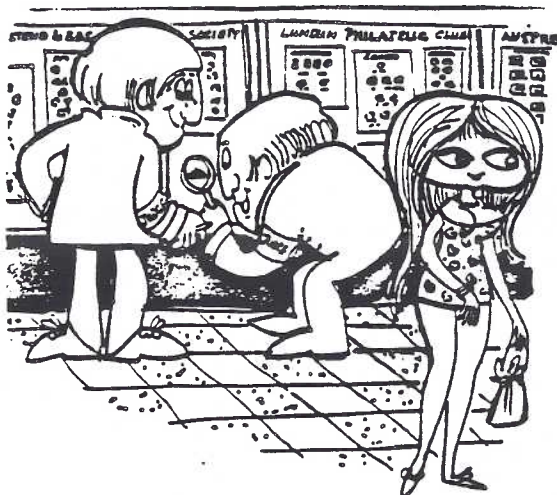
Clyde was the name given to the Post Office at Carthage since there was a Carthage Post Office in Jefferson County. It was located on the east bank of the Genesee River at the Lower Falls. The location was unusual in that there was both a site for landing boats from the lake and a source of waterpower from the falls. Caleb Lyon cleared the land in 1809 and a few families settled on the

Site. But it wasn't until 1816 when Elisha B. Strong and Elisha Beach bought 1000 acres and had the land surveyed that the settlement took hold. In 1824, it reached the acme of its glory. Carthage then consisted of a hotel, stores, warehouses, a grist mill, a saw mill, a chair factory and a blacksmith shop. Strong built a manmouth bridge across the deep gorge of the Genesee. Construction started in 1817 and was completed in nine months. It was 700 feet long and 400 feet above the water. Due to faulty construction, collapsed.

Elisha B. Strong, a descendant of pioneer colonists moved from Windsor, Conn to Canandaigua in 1809. A graduate of Yale, he became a law student in the firm of Howell and Grieg and was admitted to the bar in 1812. He served in the New York Legislature from Ontario County in 1819-1820. Strong became the first Judge of Monroe County March 5, 1821.

## SPRING MEETING

SUNDAY MAY 7<sup>th</sup> 10 AM  
KARROT'S RESTAURANT



'Now, there's a lovely specimen!'  
'You're telling me!'

## SPRING MEETING

SUNDAY MAY 7<sup>th</sup> 10 AM  
KARROT'S RESTAURANT



## POSTILION PUBLICATIONS

PROUDLY ANNOUNCES ITS NEW  
POSTILION SERIES OF PRIMARY SOURCES

**Volume 1:** *International Air Mails, as Reflected in the US Postal Guides and Supplements, 1921-1946;* 275pp., \$48.50

**Volume 2:** *A Wartime History of the Post Office Department, World War II, 1939-1945;* 290pp., \$35.00

**Volume 3:** *USPOD Rates, 1789-1956;* 86pp., \$16.95.

All are cerlox bound. Please add \$3 for 1st volume & \$1 each additional volume for postage & handling.

A Free List of Quality Reprints of out-of-print philatelic literature of the World is available for a SASE.

THE PRINTER'S STONE, LTD.

BOX 30  
FISHKILL, NEW YORK 12524  
(914) 471-4179



# THE PRESIDENT'S CORNER

Hello all! Well, the holidays are over now and things should be mostly back to normal for everyone. It is nice to report that things are getting back to normal with your Society also.

Martin Margulis has taken over a substantial part of getting out our Bulletin for you. He has pitched right in and has a great "can do" attitude. His son David, one of our newest members, is his right hand and computer specialist. During the next few months, most of the glitches will be worked out and you will be getting a regular, information packed Bulletin that you have been used to in the past.

Of course, editors are always looking for stuff to publish. So why don't you take a moment now and think of what you can contribute. Everything is needed. Not just articles, but your favorite covers, letters to the editor, news clippings, everything. Send it directly to Martin in the Bronx.

In May, which is just around the corner, we will be electing a new slate of officers. Perhaps you yourself, or someone you know would be interested in taking a job on our management team. We would like to know about it. Call or write to me. If you prefer, you can nominate someone for office directly. Just see the secretary's column to see how to do it. We are in the process of building up the number of people to do the various society tasks so each person that takes a job will have less of a burden. Try it, I think you will like it!

Kind of related to new officers is new members. We always have a few people join and few people drop out every year. But our greatest strength is our basic group of long time hard workers. We don't like to think so, but these people wear out, get sick, even die. These are the people we need to replace with new members. Please always be on the lookout for people that are interested in postal history and who can contribute to our society for many years to come. At shows, bourses, local clubs, and anywhere you find them, talk about ESPHS. Give out a copy of our membership folder and tell them a little about what we do and how everyone will benefit from their joining. Just think of how much benefit about 4 or 5 younger worker members could provide. Be on the lookout!

Mark your calendars now and plan to attend the annual meeting in Utica on Sunday, May 7th. There are a lot of activities under way at the moment that the general membership will start to see pretty soon. You can learn about some of this at the meeting. Also it is a great opportunity to buy from the dealers that set up shop there. The best part tho, is the fellowship and exchange of information (and gossip) between members. See you in Utica!!!!

*Jack*

## WESTERN REGIONAL MEETING

The Western Regional Branch of ESPHS met at the East Aurora Town Museum at Main and Grove Streets, in Aurora, N.Y. on February 5, 1989. The meeting was chaired by Rodger Kline. The Museum was kind enough to donate use of their facilities.

The format of the meeting was for each person to discuss a subject, cover, or collecting interest for the edification of the others. This style has worked very successfully at previous meetings, and proved popular once again here.

According to Dick Hedley much material was shown in albums and also in documents of an historic nature. This provided for some very lively discussion at the meeting. So much so that he feels that future meetings will be even better attended.

The next meeting will be held in early April. The exact date can be obtained from Mr. Hedley at the address below. Postcards will be sent to Western Region ESPHS members. The meetings start about 1:30 PM. Further information can be obtained from Richard P. Hedley, 120 Hedge Row Drive, Hamburg, N.Y. 14075.



**UNCLE SAM STAMP**

**&  
COIN CO**

621 Third Avenue  
Watervliet, NY 12189  
Arnold Leiter - prop  
Phone (518) 274-0994

**SOMETHING FOR EVERY COLLECTOR**

**HONESTY AND REAL VALUES**

10 - 6 Tues & Wed  
10 - 8 Thur, Fri & Sat  
closed Sunday & Monday

**REMEMBER -- Always a 10% discount  
on all supplies to any ESPHS member**

## TRADING POST

VIRGINIA COVERS WANTED - Stampless covers through early 20<sup>th</sup> century. Will make generous trade (NY material) or purchase offer. Russell Crow, 417 Shanks St., Salem, VA 24153

WANTED: Stampless, manuscript Castle-  
ton, Cityville, Long Neck, Richmond Valley,  
Richmond County, NY. Miller, Box 231,  
Staten Island, NY 10314

WANTED: US 1869 issue covers from: New  
Jersey, Staten Island, Long Island, Block  
Island, Marthas Vineyard, Nantucket. Brad  
Arch, 144 Hamilton Ave., Clifton, NJ 07011

WANTED: Otsego/Delaware PH. Early  
India cancels on Victorian issues Scott  
nos. 2 thru 35. US precancels Scott 1054  
onwards. Hulbert, RD #4, Box 4A C, Oneonta,  
NY 13820

WANTED: Early Saratoga County, NY  
stampless, particularly Charlton, West  
Charlton, Ballston X-rds and Milton. John  
A. Lange Jr., Root Rd, RD #2, Ballston Spa,  
NY (518) 882-6373

FLORIDA covers wanted. Pre-1900 un-  
usual postmarks of interesting content.  
Herbert P. McNeal, 520 Lakemont Av. South,  
Winter Park, FL 32792

WANTED: US mint cut squares and entires  
- 1960 and before. Ray Lewis, box 749,  
Gloversville, NY 12078. (518) 725-9161

**NOTICE:** All Trading Post advertisements MUST be  
submitted TYPED and CAMERA-READY. Ads must be  
limited to 25 words of text. Longer ads will be considered  
paid ads. Untyped ads will not be run.

## ESPHS PUBLICATIONS FOR SALE

### MANUSCRIPT POST OFFICES OF NEW YORK STATE

The definitive work! Published in 1984 by ESPHS.  
Retail price: \$12.00.  
Member price: \$9.60, postpaid.

### ONTARIO COUNTY POSTAL HISTORY by Emma Koberg

95 pages, maps, postmarks and illustrations.  
Reprint. Limited edition of 25, members only  
Member price: \$9.00 postpaid.

NEW YORK POSTAL HISTORY by Kay and Smith  
The NYS "bible". APS retail price: \$40.00.  
Member price: \$28.50, postpaid

### POCKET EDITION LIST OF FEDERAL OFFICES OF NEW YORK STATE

Limited number available!  
Retail price: \$5.00  
Member price: \$3.00, postpaid

### WAYNE COUNTY POSTAL HISTORY by Emma Koberg

81 pages, maps, postmarks and illustrations.  
Retail price \$10.00  
Member price \$6.00, postpaid

### THE POST OFFICES OF THE COUNTY OF DUTCH- ESS by Roy Ahlquist

Provides names, locations and brief information according  
to postal records for all of the post offices which have  
existed in the county.  
Price \$2.85, postpaid.  
Order directly from Roy Ahlquist, RR1, Box 122 N.  
Quaker Lane, Staatsburg, NY 12580

For all other publications mail orders to:

ESPHS  
P.O. Box 5475  
Albany, NY 12205

## 100TH ANNIVERSARY FIRST STAMP SHOW STIPEX-89 THEME

The Staten Island Philatelic Society founded March 19, 1884, the earliest founding date of any existing U.S. philatelic society, will feature the 100th anniversary of the first stamp exhibit held in the United States as the theme of STIPEX-89. The first stamp show in the U.S. was held in 1889 in the Eden Musee on 23rd St in Manhattan and the Staten Island Philatelic Society was a joint sponsor.

The Staten Island Society numbered among its members many of the foremost philatelists in the country among whom were C.H. Meekel of St Louis, Walter S. Scott who was the editor of The Metropolitan Philatelist which was originally owned jointly by the New York, Brooklyn and Staten Island Philatelic Society which held fifty (50) per cent, Charles Bradwell Corwin who was recognized for his study of watermarks and perforations and had the distinction of being the first collector in history to pay more than one thousand dollars for a single stamp, when the De Coppet collection was sold by Mr Scott. Corwin paid \$1,010 for the 2 cent British Guiana "Cottenreel" of 1851. Henry Clotz, also a member, was the circuit manager for the society whose circuits included Berlin, London, Louisville and Paris in addition to those in New York.

STIPEX-89 will be held April 15-16, 1989 in the Church of St Teresa on Victory Blvd, at the corner of Slosson Ave in Castleln Corners, Staten Island. It will feature an Open Exhibit, Dealers Bourse, a United States Post Office station and admission is FREE.

A souvenir cover with a special cancellation will be available at a cost of one dollar. Prospects and additional information may be obtained from the Society at P.O. Box 231, Staten Island, N.Y. 10314.



# Society News

## NEW MEMBERS

We extend a welcome to our newest members:

John Amberman  
Betty Mae Forster  
Richard L. Luftig  
David Margulis  
Dr. Joseph C. Muren  
Geoffrey Remond

## MEMBERSHIP APPLICANTS

Membership applications have been received from the following:

Groten, Dr. Arthur H.  
Box 30, Fishkill, NY 12524

Interests: Hudson River mails

References: APS

O'Neill, Gary Lewis  
150 Bass Run La, Hamlin, NY 14464

Interests: Albany PH; Banknote cancellations-plates-aux markings-usages

References: APS

## EXPULSIONS

The following have been dropped from membership for nonpayment of dues:

Donald M. Bodow  
Harold Dylhoff

Lloyd T. Hayward

George R. Hunt  
Richard A. Kase  
Richard W. McDonald  
Pitt Petri  
Norval F. Sellers

## NOMINATIONS

Elections for the offices of president, vice president, secretary-treasurer, and directors (3) will be conducted at the annual meeting of the ESPHS scheduled for May 7, 1989. Nominations from the general membership are requested. Nominations may be made by any member in good standing, and must be submitted by March 20, 1989.

Anyone making a nomination must acquire the consent of the nominee. Anyone receiving three or more nominations will be placed on the ballot.

## PRICES REALIZED SALE #60

1.	\$22.00	27.	\$ 5.00	52.	\$ 2.00	78.	\$ 9.00
2.	7.50	28.	6.00	53.	2.50	79.	6.00
3.	10.00	29.	2.75	54.	2.75	80.	16.00
4.	5.00	30.	30.00	55.	5.00	81.	5.00
5.	3.50	31.	22.00	56.	4.00	82.	NB
6.	12.00	32.	4.50	57.	26.00	83.	NB
7.	12.50	33.	3.00	58.	4.00	84.	7.00
8.	7.50	34.	5.00	59.	3.00	85.	NB
9.	10.00	35.	5.00	60.	2.25	86.	5.50
10.	2.25	36.	8.00	61.	4.75	87.	27.50
11.	7.00	37.	8.50	62.	13.50	88.	27.50
12.	9.00	38.	10.00	63.	1.00	89.	15.00
13.	6.50	39.	5.50	64.	10.00	90.	NB
14.	4.75	40.	8.50	65.	4.00	91.	NB
15.	14.00	41.	6.00	66.	10.50	92.	5.00
16.	28.00	42.	7.50	67.	3.25	93.	4.75
17.	53.50	42A.	W	68.	6.00	94.	6.00
18.	50.50	43.	17.00	69.	13.50	95.	7.50
19.	1.25	44.	3.25	70.	14.00	96.	6.00
20.	3.25	45.	4.50	71.	4.00	97.	4.50
21.	2.25	46.	9.50	72.	31.00	98.	5.00
22.	6.00	47.	8.50	73.	NB	99.	6.00
23.	11.00	48.	21.00	74.	1.25	TOTAL	
24.	2.25	49.	3.00	75.	4.50	SALE 379.75	
25.	13.50	50.	3.00	76.	17.50		
26.	2.25	51.	7.00	77.	7.00		

## PRICES REALIZED SALE #59

1.	\$ 2.75	32.	\$ 3.50	63.	\$ 5.50	96.	\$23.00
2.	3.25	33.	9.00	64.	4.00	97.	19.00
3.	3.25	34.	9.00	65.	12.50	98.	8.50
4.	2.75	35.	8.00	66.	32.50	99.	45.00
5.	8.00	36.	3.00	67.	10.50	100.	3.00
6.	21.00	37.	5.50	68.	5.00	101.	4.50
7.	3.50	38.	5.00	69.	5.00	102.	6.00
8.	24.00	39.	5.50	70.	6.50	103.	6.00
9.	18.00	40.	1.00	71.	16.00	104.	NB
10.	13.00	41.	3.25	72.	10.00	105.	NB
11.	13.00	42.	3.75	73.	22.00	106.	1.25
12.	3.25	43.	3.00	74.	21.00	107.	15.50
13.	8.00	44.	2.50	75.	9.00	108.	2.25
14.	7.00	45.	8.00	76.	6.00	109.	NB
15.	7.00	46.	5.00	77.	21.00	110.	8.00
16.	15.50	47.	7.50	78.	4.00	111.	6.00
17.	5.00	48.	8.50	79.	27.00	112.	8.00
18.	14.00	49.	4.00	80.	21.00	113.	8.50
19.	5.50	50.	3.00	81.	2.00	114.	12.00
20.	4.00	51.	11.00	82.	9.00	115.	1.00
21.	5.50	52.	2.25	83.	2.75	116.	5.00
22.	1.00	53.	5.00	84.	NB	117.	11.00
23.	5.50	54.	4.25	85.	NB	118.	1.00
24.	4.00	55.	3.50	86.	13.00	119.	10.50
25.	5.00	56.	22.00	87.	26.00	TOTAL	
26.	27.50	57.	10.50	88.	9.00	SALE 1028.25	
27.	25.00	58.	12.50	89.	1.50		
28.	18.00	59.	3.00	90.	1.00		
29.	4.50	60.	5.50	91.	2.00		
30.	10.50	61.	1.00	92.-95.			
31.	5.50	62.	2.75		29.00		

A nominating committee is preparing a slate of nominees which will be voted on at the annual meeting unless a mail ballot is necessary.

Nominations should be mailed to the E.S.P.H.S., P.O. Box 5475, Albany, New York 12205.

Maris Tirums  
Secretary-Treasurer

## AUCTION RULES

(save for future reference)

Bidding increments are-25¢, up to \$5, 50¢  
to \$10 & \$1 ~~thereafter~~. *to 20, +2.50 there after*

Bids under \$1 will not be entered.

All lots will be sold at one increment  
over 2nd highest bid.

Min bids &/or starting bids are not per-  
mitted---if an owner wishes to protect  
his better lots, he may indicate an  
amount below which he does not want to  
sell & if bidding does not reach this,  
the lot will be returned to owner at a  
flat charge of \$1 per lot. On all other  
returned items owner must pay postage &  
fees. There will be a charge of 25¢ on  
each passed lot.

Estimates shown are owners valuations  
&/or bidding guides & not MIN.

In case of tie bids, bid with earliest  
post mark will prevail. "Buy" bids are  
not acceptable

Lots may be examined by appointment with  
auction manager not less than 2 days be-  
fore nor more than 10 days before auction  
deadline for bids.

ISPHS commission on sales is 10% to buy-  
ers only, with min of 25¢ & ~~thereafter~~  
per lot, except when lots are grouped in-  
to a single sale, in which case the max  
is \$10 times number of lots grouped.

Auction manager reserves the right to  
combine or separate material submitted  
by same owner into lots he judges will  
sell best.

Loose stamps are not admissible. Even  
covers should have PH interest.

Lots must have a min. retail value of at  
least \$2.50 each.

Postage, ins fees, etc on lots purchased  
are charged to buyer, min 75¢

## ABBREVIATIONS

note that in many usages both upper & lower  
case letters may be used interchangeably.

adr	address or addressed <i>also addr.</i>
ADV	advertising
ASCC	American Stampless Cover Cat
ave	average (for type of material described)
bl	blue
BN	Bank Note issue
br	brown
brt	bright
BS	back stamped or backstamp
cat	catalogue (Scott or ASCC)
CC, cc	corner card
CDS	circular town & date HS
comm	commercial
CO	county
cov	cover
cts	contents or contains
DCDS	double circle town & date HS

DLCDs	circular DS with double outer line
DODS	double oval town & date HS
Doc	document
dok'd	docketted
DPO	discontinued post office
E	estimated value and is in no way
EST	a min or starting bid
ENV	envelope (no cont unless so stated)
F	fine (above average)
FDC	first day cover
ff/ffs	file fold (s)
FLS	folded letter sheet (cont included otherwise descr)
G	good (below average)
G/VF	items in multi item lot vary so
gr	green
HS	hand stamped marking
ill, ill.	illustrated, illustration, etc
(ILL)	lot is illustrated in auction list
int	interesting
lg	large
let	letter
lthd	letterhead
m	millimeter
mag	magenta
max	maximum
MC	member of Congress
merc	mercantile
min	minimum
msc	manuscript marking
NB	no bids
N.O.R.	no outer rim
NYD	no year date
oc	off center
ODS	oval town & date HS
or	orange
O.E.	owners estimate
o/v	otherwise
P	passed lot
pers	personal
PC	government postal card
pf	perforated
PH	postal history
PM	Post Master
PO	Post Office
pol	political
PPC	picture post card (view card)
pmk	postmark
Reg	registered or registry <i>also Regis.</i>
RFD	Rural Free Delivery pmk
S	superb
SE	straight edge
SL	straight line
sm	small
s-o-n	socked on the nose
stls	stampless <i>also stpls</i>
tmk	townmark
v	very
VF	very fine (much above average)
VG	very good (almost average)
W	withdrawn lot
yel	yellow
#	number
/	another line
*	see note at end of sale

### Important Notices!

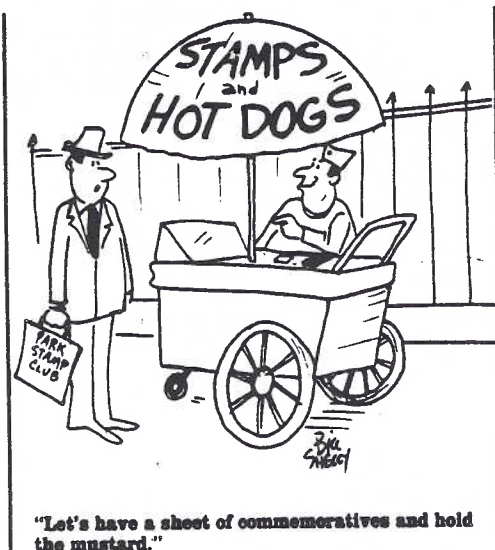
Payment for lots won must be mailed with-  
in 5 days of receipt of same.

If acknowledgement of receipt of material  
to be placed in auction is desired, a  
stampd self addressed post card must be  
included,

Allow 4 - 6 months for submitted mater-  
ial to appear in auction.

A limit of 10 lots per sale is standard -  
more lots only if needed for a particular  
sale.





"Let's have a sheet of commemoratives and hold the mustard."

### NOTICE!!!!

PLEASE, please, do NOT use POST CARDS for your bids..they frequently take from 7 to 10 days to arrive & have resulted in several of you having your bids arrive after lots have been mailed!!!!

We are again in desperate need of good items for our sales! Many of you have promised material but it has not been sent. As of now, I have on 30 lots for our next sale!!!

Your Auction Mgr..



### AUCTION ACTION

**Auction Manager.....GEORGE SPENADT**  
1470 Wyoming Av. Schenectady. N.Y. 12308

Bidders are reminded of the bidding increments for the I.S.P.N.S. mail auctions. They are:

Up to \$5.	- 25¢ increments
\$5 - \$20	- 50¢ increments
\$20 - \$35	- \$1 increments
Over \$35	- \$2.50 increments

Bidders are requested to settle their accounts as soon as possible after notification that they have successfully bid on a lot(s).

### IMPORTANT

Please. In sending payment for auction lots. STAMPS are not acceptable.

Sending cash not recommended. Do so at your own risk.

There is much delay in sending payment. Please be prompt. for your auction manager's sake!

# Auction Action

## SALE #61

1. MSC-CAROLINE\Dec10 Free\J.Speed,P.M. on F,sl stained 1828 FLS...
2. MSC-DEPAULVILLE NY\JULY 16 & 18+ on F,sl stained 1844 FLS...
3. MSC-HAMILTON NY\Nov 7th Free Jno Stoner on F+(ff) Address Sheet only—1828...
4. MSC-LA FARGE VILLE NY\MAR9 1842 & 18+ on sl aged & soiled 1842 FLS...
5. MSC-LAWRENCE VILLE NY\Feb9\50 & 10 on F,sl aged manila ENV cont long int let dated 1850...
6. MSC-OWBOW NY\Jany14 & 18+ on VF(ff)1833 FLS....
7. MSC-ELWING MASS May3 & 6 on VF(ff) printed Election Return—1844...
8. 2 Oval HSs of AUBURN\DN.Y. in red 32x24m ODSs-1 has HS PAID-in-Scroll & msc 18+ on sl aged 1834 FLS-Other has msc 30 on 1835 FLS w ff break along top-Also has PAID-in-Ribbon!!!
9. PHILADELPHIA\DN.Y.(upside down & ltly struck) in 39x24m ODS w msc Paid 18+, on somewhat aged & soiled 1840 FLS...
10. ROME N.Y.\DN in clear,partially DOTTED 28x20m ODS w msc 12+ on F+ 1830 FLS!!!!
11. SYRACUSE\DN.Y. in 33x23m DLODS(inner line v thin) w msc 10 on sl soiled 1829 FLS...
12. TROY\NY\DN in black partial 34x26 DLODS w msc 8 on VF(ff) 1814 FLS(v early use). Cont banking letter on watermarked paper.
13. 2 items w ODSs-TROY\NY\DN in almost complete or-red Dotted Oval 33x25m ODS w msc 10 scratched out & msc 20 added on VF 1827 FLS. Paper wmk TROY,etc. 2nd has LOCKE\DN.Y. in or-red 28x21m ODS w msc Free on sl soiled 1842 FLS(sm 12x22m,piece missing at left just touching HS).. nice lot!!!
14. UTICA\DN.Y. in or-red 31x23m ODS w HS PAID-in-Ribbon-F+ 1838 FLS(some breaks & repairs at ffs! Cont re: Change of name & regis. of CANAL BOAT!!
15. HIGH RATE-ALBION\DN.Y.(NY fancy) w msc 56+ rate on VF 1841 FLS
16. 2-AUBURN\DN.Y. in black 34m CDSs-1 has HS 5 on F+ 1854 FLS-cont printed bank protest form-2nd has HS PAID\3-in-circle on VF ENV..All strikes CLEAR!
17. 3 FLSs-All have AUBURN\DN.Y.(NY fancy) in 30m CDSs 1 is blue w msc 10-1838. 2nd is or-red w msc 10-1844 & 3rd is red w HS PAID 5-1846-All are F & sl aged, 1 has sm stains—A nice lot!!!!
18. Matched pr GREEN-AUBURN\DN.Y.(NY fancy) in 30m CDSs-1 has HS PAID 5,other PAID10..Both on F(ff) 1848 FLSs—A V.V. unusual lot!!!!!!
19. 3 SARATOGA CO. CDSs-1 WATERFORD\DN in bright red 30m CDS w msc 6,cont datelined NORTHUMBERLAND 1822.. 2nd has 30m or-red CDS w HS PAID & msc 12 NYD & Addr.Sheet only. Last has black 31m CDS(sans-serif lets) w HS (arced)PAID\3 on VF ENV!!!!
20. BROOKLYN\DN.Y. in bold 30m CDS w HS 5 on VF(ff) 1852 FLS. Cont long int.letter!!!
21. 2 BUFFALO items-1.Blue Oval w Fleurons & sans-serif lets + blurred HS FORWARDED-in-Rectangular box + or-red NEW-YORK\DN CDS all on 1839 Printed Protest Form(ffs)-2.BUFFALO,N.Y.\DN\3PAID in blue 32m CDS on VF ENV. All BUFFALO & NY strikes are clear!!!
22. 2 diff BUFFALO Ovals-1.BUFFALO\DN N.Y. in cl blue 30x22m DODS & HS PAID-in-(lg)Ribbon w msc 18+ on F+ 1840 FLS.-2.BUFFALO\DN N.Y. in bold blue 31x23m DODS w HS PAID-in(sm)Ribbon w msc 10 on VF (ff) 1846 FLS. An interesting pair!!!
23. CAPE VINCENT\DN.Y. in lt.,or-red 30m CDS w lg HS PAID\3 on VF ENV.



24. CLAYTON\N.Y. in 30m or-red CDS w HS 5 & PAID on VF Addr. Sheet docketed 1850.
25. HAMILTON\N.Y. in 30m CDS w HS PAID 5-in-box on VF manila ENV.
26. HENDERSON\N.Y. in blue 33m CDS w HS PAID\3-in-circle on VF+ 1854 FLS. Cont long let.
27. HOMER N.Y.\D\3PAID in bold 32m CDS on VF ENV.
28. KINDERHOOK\N.Y. in bold 30m CDS w HS PAID\3 on VF, v sl soiled manila ENV.
29. NEW-YORK\N.Y. PAID 6cts. in 30m or-red CDS on VF(ff) 1855 FLS wmk 1853, etc.. V. Nice!
30. 2 NYC items-1. DROP let-NEW-YORK\N.Y. 1Ct in 30m black CDS on VF Addr. Sheet. 2.-CIRCULAR--NEW-YORK\N.Y. PAID 1Ct in 30m red CDS on VF, sl aged ENV.
31. 2 NYC items-1. NEW-YORK\AUG12\PAID(P lg)3Cts. in or-red 31m CDS on VF+ 1851 FLS.-2. NEW-YORK\DEC4\PAID(latter slanted)\5 cts. in lg 34m or-red CDS on VF(ff) 1851 FLS. Cont mercantile letter!
32. NORWICH\N.Y. in bold 33m CDS w HS PAID\3-in-circle on VF small ENV.
33. PIERREPONT MANOR\N.Y. in 31m or-red CDS w HS PAID-in-box & 3 on VF ENV dock. on face 1853.
34. 2 stpls items-Bold PORT BYRON\N.Y. in 31m CDS w HS PAID & msc 18+ on partial Addr Sheet.-2. UNION SPRINGS\N.Y. in 34m or-red CDS w HS 5 on 1851 FLS. Cont int let.
35. SACKET'S HARBOR,\msc\N.Y.(NY inverted) in 29m CDS w msc Public Service\Paid scratched out & msc Paid 20 substituted, on 1822 FLS. Heavy ffs.
36. 2 WATERTOWN\N.Y. in blue 30m CDSs-1 has HS PAID & 5 w msc via Utica & chg ac't #D29,-1847- 2. has HS 10 & dock-Ans 31 March '48, on face. Str. just off at bottom. Both on VF FLSs.
37. WEEDSPORT\N.Y. in cl blue 31m CDS HS PAID\3 on F+ lt buff ENVELOP.
38. 3 WHITE HALL\N.Y. Cvs-+ 1 ELIZABETHTOWN\N.Y.--Latter black w msc 5. Of others, 1 is blue w HS 5 2 are or-red(1 faint). Better 1 has HS PAID 5. All are in 30m CDSs on F FLSs w usual ffs.
39. 9 NYS stpls covs-PAINTED POST; WATERLOO; PENN YAN; GENEVA; ETC. All diff from Ave to VF.
40. 5 MASS. stpls- 2 WORCHESTER w HS 5s, 2 diff. LOWELL; Ms & 1 BOSTON. An average large lot.
41. 2 X-BORDER items-1 is antelined MONTREAL & has or-red-27m NEW-YORK CDS. to where it was privately carried) & msc 1 for DROP let rate. 2nd has or-red 32m ROCHESTER N.Y.\D\5 w HS PAID + CANADA mkg-QUEENSTOWN\SEP28\1838\UC cds + 2 CANADA bksp on reverse + msc Canada rate(?)
42. Bold WASHN(N high) CITY\N.D. in or-red 31m CDS w HS FREE & msc Free Jno D. Dirkins on 1828 FLS. Has heavy ff & 5 lines of dock. in INK on face!
43. GEORGETOWN.(E high)D.C. in bold 30m broken rimmed CDS w msc 10 on VF 1825 FLS.
44. PRINCETON\N.J. in GREEN 28m CDS w HS 5-in-Box on VF sl aged ENV w cont-long int letter!!
45. TRENN(2nd N high) N.J.\D\ in bold 32m CDS w HS PAID & msc 10 on F+(ff) 1825 FLS. Cont long let.
46. ELIZ. N.Y. in distorted & somewhat blurred 30m? CDS w msc 12+ on F+ 1830 FLS. Cont v long let.
47. 2- PHILA(A high)\D in red 27x21m OctDSs- 1 bold w msc 18+ on 1835 VF FLS. Other lt. w msc 12+ on VF 1835 FLS. Both have int cont..
48. 2 items- EAST HADDAM\N.Y. in 29m CDS w HS PAID & MSC 6 on VF 1832 FLS-2nd. PROVIDENCE \N.Y. I. in BLACK 30m CDS w RED HS PAID & BLACK HS 3 on VF manila ENV--Unusual!!
49. CLARKSVILLE\N.Y. in clear 29m CDS w msc 25 on F(ffs) 1843 FLS(1st pg of let missing).
50. MSC-BURNT HILLS\April 5th w pen-canc rough copy of #11 on soiled ENV. Has cont is dock. 1857.. WATERTOWN 1859 cds ties #24 to VF FLS w printed protest letter from Jefferson Co. bank.. Nice!
52. 3 #24s tied by AUBURN.NY CDSs to sl aged ENV...
53. MSC-SPENCERTOWN\NY July 21 w pen-canc o/c #25 on VF small ENV. Not tied!
54. #28 tied by grid kil to VF ENV w SOUTH EDMESTON, NY CDS.
55. 2 SHELTER ISLAND items-1 has MSC SHELTER ISLAND\N.Y. Aug 18 on pen-canc sl aged #U10-has cont. 2nd has clear BALLOON CDS(36m) on sl aged #U10.
56. 3 items-2 have #85s w cork kil & SYRACUSE & NYC CDSs on F ENVs-Other is F+ #U35 w NY CDS & 8 segmented round cork kil.
57. #73 tied by AUBURN,NY blue CDS to F+ yel ENV w printed Religious notice---a Circular! Nice!
58. 2 items-1 #114 tied by cork kil to VF ENV w SYRACUSE,NY CDS. Other has #220 w JOHNSONBURGH, NY CDS on F ENV. Has cont.
59. ALEXANDRIA\JAN 1 1880\JEFF.CO.N.Y. in clear CDS w tar kil on F #UX5.
60. Farmer Village,\MAR 9 1882\Seneca Co. N.Y. in irregular DLCDs on #UX5 w lg STAR kil-VF-has printed adv message on reverse.
61. 2 items- 2ct br BN tied by lg STAR w CARLTON STATION dlds of 1887 on rough ENV w cc. 2nd has pre-canc(GASPORT) 1ct #740(National Parks) on VF folded oversize ENV.
62. 2 items-Nice vert pr 1ct blue BNs on VF ENV NY CDS 2nd has #268 on #U362 VF ENT w cc & '02 NY CDS.
63. ADV cov-Illus of EAGLE in Flight grasping staff of U.S. Flag w Adv in white stripes & Ribbon in its Beak w more adv matter thereon. F+ ENV has 3ct gr BN tied by AUBURN,NY CDS-A STRIKING cov.
64. 2 ADV covs-Both HAYDEN & SMITH of AUBURN,NY. Both 3 ct gr BNs tied by AUBURN CDSs. 1 has lg brown illus of IRON CLAD HAME. Other has 2 illus-1 of IRON CLAD HAME & other of BOLT HAME. VF ENVs!!
65. AUBURN,NY ADV cov Has overall illus in lt green, of HORSE COLLAR. Has #267 tied by AUBURN Flag canc of 1899 & brown cc. Also has Flag canc of ERIE,PA on reverse--UNUSUAL!!!
66. ADV cov-(ALBANY CO) lg red illus of BREAST STRAP TRIMMINGS & cc Covert Manfg Co/WEST TROY,NY w 1896 CDS of WEST TROY 2ct. red on VF ENV..
67. lg fancy br red ADV of Printing inks firm at 101 Beekman St.NYC w HS MOVED TO 290 BOWY- Has NYC 1899 FLAG canc tying 2ct red to VF ENV. A gem!!!
68. 3 Pa. covs w illus ccs. All have 2ct reds of late 1890's on F+ ENVs. CDSs of OIL CITY; YOUNGSTON; ETC
69. 4 BOSTON covs w int illus ccs. 3 have 2ct #267 on VF ENVs. 4th has 1ct #300 on ENV..
70. 4 covs w illus ccs. 3 have #267 on ENVs. 4th has TROY,NY mach canc of 1910 tying 2ct WASH. Head to F ENV(sm piece missing at corner of ENV)..
71. ADV cov-Lg illus of CHISEL, AUGER 7 WOOD PLANE w caption-OHIO TOOL CO., etc. & #267 tied by AUBURN, NY FLAG canc to F(flaps missing)NICE!!!
72. V lg illus of a ROLLER MILL MACHINE of AURELIUS AVENUE MILLS. AUBURN,NY on VF ENV w AUBURN 1893 CDS tying 2ct Columbian..
73. LG blue circular cc of DENNISON MFG CO. ON sl foxed ENV w BOSTON 1893 Mach canc tying 1ct Columbian. Circular use!!
74. R.R. ADV cov-In lg letters-"THE D&H" Leading\ Tourists' Line\ of America & cap. Passenger Dept, Albany,NY. Has 1ct #300 on VF ENV. UNUSUAL!!!
75. LG Fancy cc of CLARK'S OLD DOMINION in neg circle, cap. Our Brand, etc., NEW YORK on VF or. 1ct gr ENT #U116. Attractive!
76. 5 ENTS w NYC canc-4 2ct, incl Columbian, & 1 3ct. All have ccs incl 1 of R.H. MACY & CO w STAR & pointing hand indicating new address. Another has Flag canc & yet another has fancy cork kil. NICE!
77. A beautiful GUN ADV cov-Has or. ITHACA GUNS across top w illus of several men in various TRAP SHOOTING stances & ENV length colored picture of an ITHACA SHOT GUN w cap.-SHOOT AN ITHACA ONE BARREL TRAP GUN. Has 1917 ITHACA,NY mach canc tying 2ct Wash head to sl soiled ENV. Rt side of ENV sl rough from opening. Has fancy Lethed cont

78. 6 BN covs-3 w 3ct & 3 w 2ct greens. All have LONG ISLAND pmks.
79. NORTH GAGE, N.Y. CDS of 1896 on regis cov w #258 (or #273). Has msc Reg no. 12 on face & Registry HSs on reverse. F cov w sl damaged corners.
80. 2 covs-1 w Regis HS & 2ct + 5ct Wash heads on 5ct Columbian ENT tied by sl, boxed NORWIC, NY canc to VF 1923 ENV. 2nd has pr #267s tied by R.F.D. JUN 2 1903 P.M. LOCKE, N.Y. w 4 in center of 4 bars on sl aged ENV somewhat shortened at left.
81. 4 POSTAL STATIONARY items-#UX6 w 1893 NYC mach canc 2nd-#U334 w NEWARK, NJ cds. 3RD-2CT GR OF 1885 w lg DCDS of ONEIDA CASTLE. 4TH-1ct #U379 w sl YONKERS, N.Y. canc..
82. 5 items-2ct gr BN w STONE MILLS, N.Y. CDS; 2ct br BN w Fancy DLDCDS of PEORIA, N.Y. (stained); 1ct blue BN w BUFFALO, N.Y. cc; #549 tied by 1921 BUFFALO CDS w framed cc & #286 (s/e) w 1898 RAY, N.Y. CDS. Interesting lot!
83. Matched pr 1st Flight covs-C.A.M. 20 both ways between BUFFALO & ROCHESTER. BOTH HAVE #C10s.
84. 2 1st Flight covs-C.A.M. 20-1 has UTICA Cachet other w SYRACUSE Cach. Both have #C10s & bkstps.
85. 3 1st Flight covs- C.A.M. 20-1 has ALBANY Cach. others have SCHENECTADY Cach. All have #C10s & backstamps.
86. 3 covs w early commems-#370 (ALASKA-YUKON); #372 (HUDSON-FULTON) & 627-Latter is ADV Cov w multi-colored illus of CHICKEN & Sack of PRATT'S Buttermilk Mash. Also has adv. on reverse. A lovely lot!!!
87. 5 items-2 Registry Bill Cards w NORTH HAMDEN, DELAWARE CO., N.Y. DLDCDS. 3 ar Registered Package Receipt cards w appropriate mks. All VF.
88. 3 items-1. Lovely, pristine XIII Winter OLYMPIC Games cov w multi-col. R&R-Colorado "Silk" Cach Has OLYMPIC TORCH STATION fancy canc tying #716 #1146 & #C85. 2 & 3 ar PCs 1 w 1905 LAKE PLACID cds OTHER UNUSED Card picturing Grave of JOHN BROWN at LAKE PLACID. An unusually F lot!!
89. 15 covs w 2ct br BNs-All from same correspondence All w enclosures. All w various NYS CDSs..  
THE FOLLOWING 9 LOTS ARE PREXYs
90. 8 COVS-All Regis. commercial covs except 1 w 6ct - PREXY 2 have illus ccs 1 w MAXAM'S GARNET LAKE, NY All NYS w 18ct & 23ct rates.
91. 9 covs-All commer. Regis.-2 ERIE CO w ccs; 2 NIAG CO & 5 WYOMING CO. Various Reg. rates.
92. 8 covs-Sim. to above 4 OTSEGO CO; 3 MONROE CO; 1 NYC.
93. 8 Sim covs-4 ALBANY CO; 1 ULSTER CO; 3 SCHARIE CO.
94. 10 Sim covs-4 TOMPKINS CO; 4 CATTARAUGUS CO; etc..
95. 10 Sim covs-5 CHENANGO CO & 5 STEUBEN CO
96. 8 Sim covs- All ALLEGANY CO.
97. 12 PREXY FDCs w matching WHITE HOUSE cachets: 2ct; 4+ct; 5ct; 9ct; 11ct; 12ct; 13ct; 14ct; 15ct; 16ct; 17ct & 18ct.. All VF addressed covs.. NICE!
98. 9 PREXY FDCs: 1ct w ANDERSON cach.; 1+(Martha Washington)-no cach.; 6ct-10ct w matching cachs in bright colors w facsimile of Presidential autographs at bottom w White House above & portrait of specific PRES. in crossed flags above that; 12ct & 17ct w WHITE HOUSE cach. A NICE LOT!  
All of above are on reasonably sm covs-
99. 2 GREAT BRITAIN stpls FLSs-1 has lg HS 2 & sl TP\ Audley St in orange box on face + or. octagonal HS on reverse-Cont-form let dated 1831. 2nd has 4 on face & CDS- TALNTON\ND16\1859 on reverse.
100. 2 GR.BR.stpls FLSs-1805- has msc 6 xed out & 7gg added. 2nd has msc 8 on face & sl HS ALFORD\146 on reverse. Cont long let dated 1824.

DEADLINE FOR BIDS APR 7, 1989

## EMPIRE STATE POSTAL HISTORY SOCIETY

P.O. Box 5475

Albany, NY 12205



**FIRST CLASS MAIL**