

EMPIRE STATE POSTAL HISTORY BULLETIN

SOCIETY
FOUNDED 1967

FALL 1989

COMMENTS ON THREE COVERS

BY ROY AHLQUIST

Much of the pleasure in cover collecting comes from ferreting out the background to re-construct the history of the times. My particular interest lies in the postal events in Dutchess County. Recently I acquired a number of local covers among which were three R.P.O.s, none of which was in great condition. What made them special to me was that they provided a new wrinkle to my collection. A little research provided me with some background for the covers.

Aside from being RPOs, all three covers are back-stamped at Wings Station and each is addressed to a Titus. Two of the three are posted at Amenia, the third cannot be identified. The span of time is from August, 1888, to approximately 1902, or about fifteen years.

The earliest cover (Illustration A) has a very weak RPO strike. Skimming my Rankin list of RPOs¹; the only reasonable strike is the Winsted-Bridgeport RR. This matches the "...EPORT" which is shown. As there is no correspondence or return address, there is no way to tell where it was posted. The back shows what I believe is a N.Y.C. transfer mark to what must have been the Harlem River and N.Y. RR. From there it was carried to wings Station where the postmaster, Merritt L. Peet, stamped it and forwarded it three miles to Webatuk Post Office where Cleveland Titus was postmaster. It's also interesting to note that until 1894 the official name was Wing's Station, but that the strike shows no apostrophe. It may be that the apostrophe was never used.

The other two covers were mailed from Amenia by Wilson & Eaton to South Dover and Webatuk respectively. Both are addressed to C. Titus, and carry the dial of the Chatham and New York RPO.

The Chatham and N.Y. RPO was run on the Harlem River and N.Y. Railroad. Chatham is located in the central part of Columbia County and was a terminus for four railroads. During this period the railroad was the the height of its operation. Aside from moving milk and other farm produce from Dutchess County to New York City, it transported many people who took summer vacations in the various villages along the line. It was not until later that Dutchess County would be replaced by the Catskill resorts.

Wilson & Eaton is shown on the 1868 Beers map as Wilson & Co. The location was at the railroad station. Adjacent to the station was a lumber yard and next to that was Wilson & Co. The map is not clear as to whether the lumber yard and the building adjacent is part of Wilson & Eaton. George Wilson and Frederic Eaton were millers, sold sashes and blinds, as well as lumber. Based on their envelope, they later added coal to their sales line. (The location was on Mechanic Street.)

Cover B is dated "OCT 25 1899." A Charles Walsh was postmaster of the Amenia Post Office and he apparently, and, in accord with regulations, set up a postal receiving box at there railroad station which would explain why there was no Amenia Post Office strike on the letters. And, as the company is located next to the railroad station, it is reasonable that they made use of that facility.

Wings Station was fifteen miles south of Amenia. Between the two points there were two stops, Wassaic and Dover Plains. The letter was cancelled on the train, and backstamped at Wings Station Post Office. Jackson Wing, appointed March 8, 1890, was the postmaster and he operated the post office in his store just north of the station

1. Hershel Rankin, Billings Philatelic Handbook, V.XI, pp. 22-39

(CONT. ON P. 4)

THE BULLETIN

is published by the

EMPIRE STATE POSTAL HISTORY SOCIETY

P O Box 5475
Albany, N.Y. 12205

All articles and advertising for the Bulletin, except
auction business, must be sent to the editor:

Martin Margulis
1368 Metropolitan Ave.
Bronx, N.Y. 10462

All letters to the President are to be mailed to:

William Hart
Box 167
Shrub Oak, NY 10588

Annual dues.... \$5.00

Officers and Committee Chairman

PRESIDENT

WILLIAM J. HART

VICE PRESIDENT

MARTIN MARGULIS

SECRETARY-TREASURER

MARIS TIRUMS

DIRECTORS

('89)

J. BURTON HULBERT

ROGER KLINE

('90)

CHARLES SWEETING

HENRY CHLANDA

('91)

CLIFF TUTTLE

EMMA KOBERG

JOHN LANGE

DAVID PROULX

AUCTION MANAGER

GEORGE BERNADT

BULLETIN EDITOR

MARTIN MARGULIS

ASSOCIATE EDITOR

DAVID MARGULIS

REGIONAL DIRECTOR

EMMA KOBERG

A.P.S. REPRESENTATIVE

EMMA KOBERG

SOUTHERN COORDINATOR

MARTIN MARGULIS

CAPITAL COORDINATOR

BILL SEIFERT

CENTRAL COORDINATOR

DAVID PROULX

FINANCE

MARIS TIRUMS

PUBLICATIONS

WILLIAM SEIFERT

EDITOR'S MESSAGE

Recently, we received a catalog from Frajola for their third 'net price' sale. Two items caught our eye: an envelope from Carmel, NY (Putnam Co.) cancelled Hayes and Wheeler (later president and vice-president) and a cover from Kingston, NY cancelled H & W. Together they were priced at \$15,250. Both had been sold immediately, so that we could not get photostats: all we could afford. There would seem to be a good market for N.Y.S. postal history out there.

There seems to be little use of the Trading Post lately. Every member is entitled to one free advertisement per year. You can have a twenty-five word ad plus your name and address. We ask that you type your ad so that it can be read and for no other reason. Repeat runs are one dollar (\$1) per insertion. If you only want to run your ad once send it to the editor. If you want to run it more than once, send it to Maris with your check.

We are sorry that this issue will be so late. It is the editors' fault. Please do not blame Bill Siefort. There has been no time available to use the computers and software we use to put out the Bulletin. We hope to get back on schedule with the next issue, the articles for this issue being already on hand.

While, at the present time, we have enough material for the Bulletin on hand, very little of it is being submitted by the "old-timers." Almost everything we're getting is from new members. It would be nice to get something from everybody. Great literary skill is not required. Two hundred or so words with illustrations would do nicely.

Also, it would be nice to get reports on regional meetings which have been or are to be held. Showing the Society functioning on a state-wide basis would help us in gaining new members.

Lastly, we would like to know about any awards won by members for any of their postal history or other philatelic collections; i.e. what was shown, where and what prize was received. Also, if we could get a written description of the material shown, we could run it with illustrations from the collection in the Bulletin.

If we are to use the Bulletin to inform the membership of the Society about what is going on, we must receive input from you.

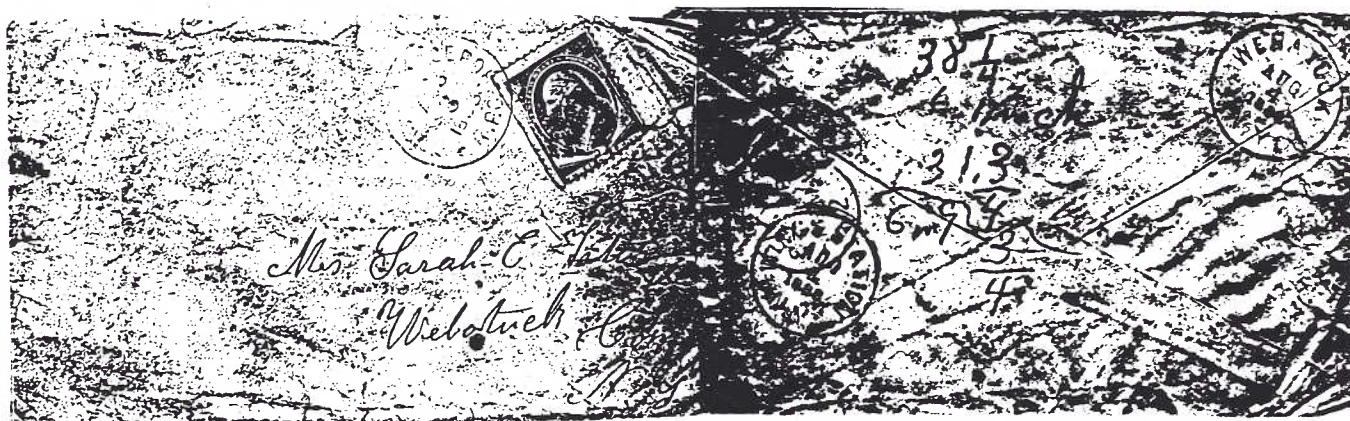
Martin Margulis

ESPHS Dealers! Consider advertising in our BULLETIN!!!! If you sell postal history or related items it would be hard to find a publication anywhere delivering more serious collectors per dollar. Also, you will be helping support the society while getting your message across to our readers who are active collectors and buyers. The rates are as follows:

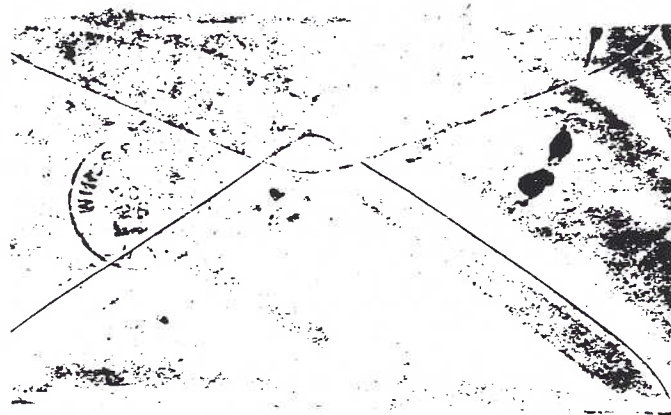
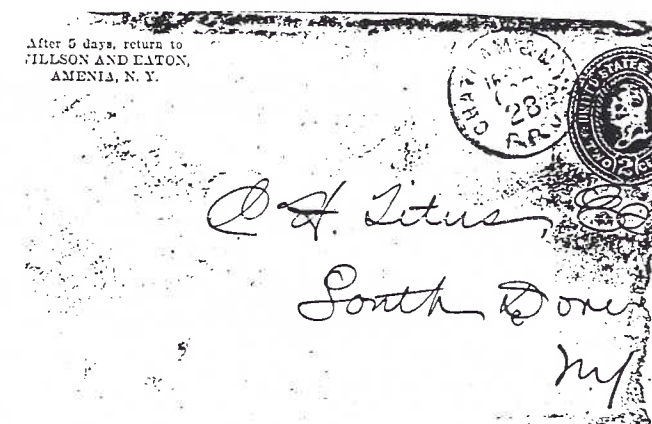
Full Page \$18.00 per issue
Quarter Page \$5.00 per issue

Half Page \$10.00 per issue
Sixth Page \$3.50 per issue

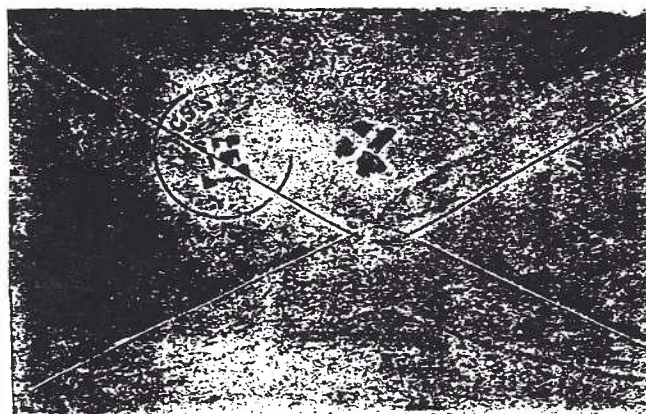
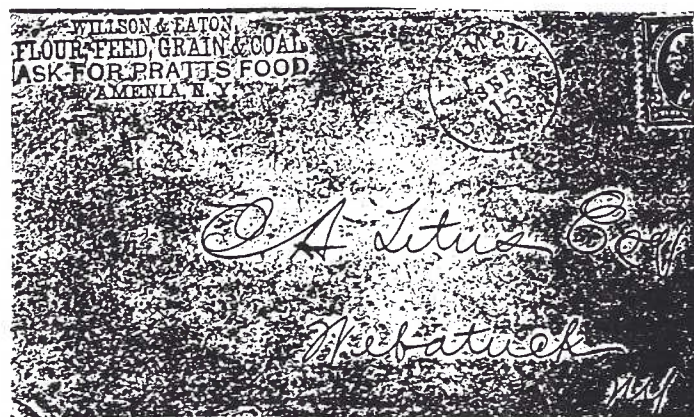
A 10% discount is allowed for four consecutive issues (one year) paid in advance. For more information or to mail advertisements write to the Editor at the above address. Hope to see you in the next issue!!!!



. A .



. B .



. C .

THREE COVERS (CONT. FROM P. 1)

platform. The platform was located across from the hotel. Jackson Wing held this appointment until August 16, 1905, when the post office name was changed to Wingdale.

From Wings Station Post Office the letter was forwarded to the South Dover Post Office where William A. Sheldon was postmaster. Sheldon held the appointment for forty-one years. He was appointed April 22, 1862 and held it until January 16, 1903. Sheldon maintained the post office in the South Dover Store, and had his home two houses north of the store.

The third cover (C) has an illegible year date in both strikes though the month and day are clearly September 15th. The stamp, Scott design A88, was in use between 1894 and 1902; however, the Webatuk Post Office was discontinued May 31, (It was reestablished in 1906 and discontinued again in 1907.) Cleveland Titus had been re-appointed postmaster of the Webatauk Post Office December 13, 1890, and he held the appointment until it was discontinued the first time. Unfortunately, the post office records do not give a middle initial, but it is likely the letter was addressed to him at his store. The middle initial of letter B is an "H. while letter C has an "A" for a middle initial. Again, it is likely that it is the same person.

Well, that is as much information as I have found to date on these three covers. Certainly, there is a good deal more somewhere, and, perhaps, one of you who read this can add something. It has been enjoyable gathering this information.

METRO POST CARD CLUB SHOW

The Metropolitan Post Card Club is having a show on December 3rd at the Days Inn, 440 W. 57th Street in New York City. There is an admission charge to this show of \$3.00. If you can make the show it is a good way to get collateral material for your postal history collection. Material such as pictures of railroad stations, post offices and other public buildings will be available. You may also find some needed postmarks. Generally prices are comparatively low. Mrs Agnes Cavalari, a new member and post card dealer provided the information about the show.

ESPHS PUBLICATIONS FOR SALE

N.Y.S. Star Cancels by David Proulx

This book contains all known star cancels and lists them by town, county and date of use. Several illustrations are included. This is a reprint of the 1987 book.

Price: \$7.50 postpaid.

Order directly from David Proulx, 7629 Homestead Dr., Baldwinsville, N.Y. 13027.

MANUSCRIPT POST OFFICES OF NEW YORK STATE

The definitive work! Published in 1984 by ESPHS.

Retail price: \$12.00.

Member price: \$9.60, postpaid.

ONTARIO COUNTY POSTAL HISTORY by Emma Koberg

95 pages, maps, postmarks and illustrations.

Reprint. Limited edition of 25, members only

Member price: \$9.00 postpaid.

NEW YORK POSTAL HISTORY by Kay and Smith

The NYS "bible". APS retail price: \$40.00.

Member price: \$28.50, postpaid

POCKET EDITION LIST OF FEDERAL OFFICES OF NEW YORK STATE

Limited number available!

Retail price: \$5.00

Member price: \$3.00, postpaid

WAYNE COUNTY POSTAL HISTORY by Emma Koberg

81 pages, maps, postmarks and illustrations.

Retail price \$10.00

Member price \$6.00, postpaid

THE POST OFFICES OF THE COUNTY OF DUTCHESS

by Roy Ahlquist

Provides names, locations and brief information according to postal records for all of the post offices which have existed in the county.

Price \$2.85, postpaid.

Order directly from Roy Ahlquist, RR1, Box 122 N. Quaker Lane, Staatsburg, NY 12580

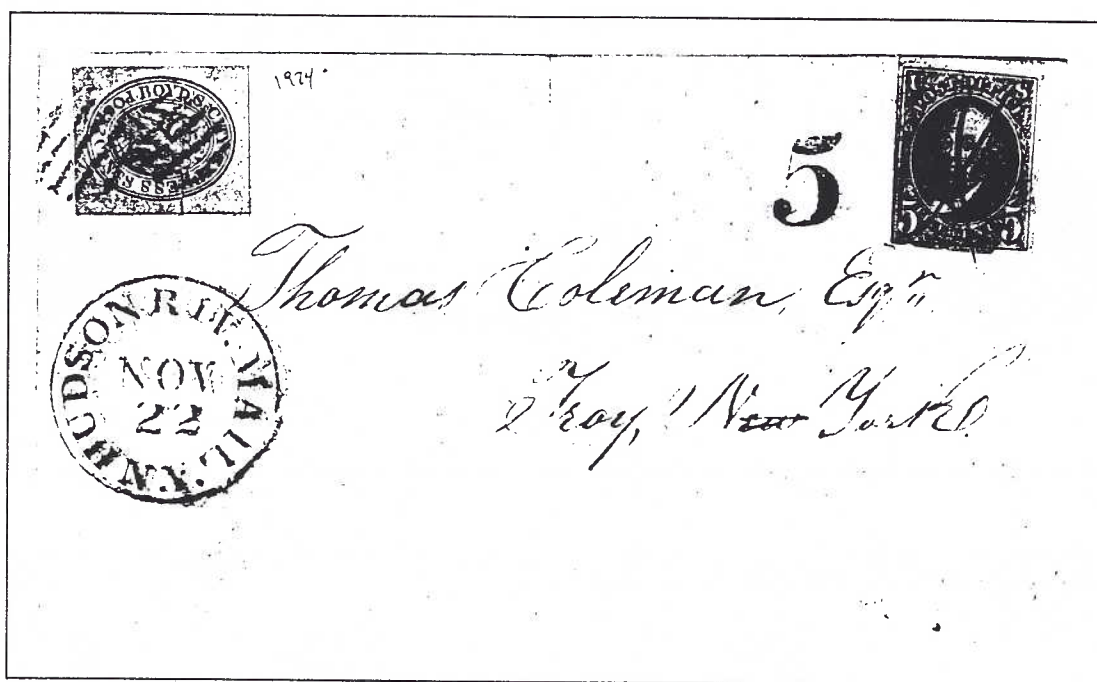
For all other publications mail orders to:

ESPHS

P.O. Box 5475

Albany, NY 12205

FRAJOLA SALE BY MARTIN MARGULIS



In June, Richard Frajola, held a net-price sale of War of 1812 and collateral material. Among the 228 lots were 57 from or to New York State not including 13 Hudson River covers. The covers ranged in price from \$25,000, for a letter from the Secretary of the Navy, Paul Hamilton, to Commander John Rodgers who was in New York City telling him about the declaration of war on Great Britain to \$50 covers. Forty-five covers were priced at more than \$1,000.

The sale was broken down into ten categories: manuscripts; U.S. Navy covers; Military Mail; Government Express Mail; Ocean Waterway; Inland Waterway; Free Mail, from President Madison down to the accountant for the War Department; 1799 Postal rates, obviously having nothing to do with the War of 1812; 1815 War Surcharge rates, to help pay for the war which was over by this time; and April 1816 restored rates, which were in force for only one month. The May 1816 rates were pretty much the same so one has to know the significance of the April 1816 date.

I noted covers from and to the USN Constellation, the USN President and the USN Constitution as well as other Navy ships.

There were covers from occupied East Florida whose occupation the U.S. Government soon disavowed, covers from occupied Canada, a cover in which a participant describes the burning of Washington D.C. as well as a letter in reference to the Battle of New Orleans, also by a participant. All of these covers, save one, were priced from \$1,250 to \$5,000. That one was \$250.

Two covers offered, of seven known to exist, were carried by the U.S. Government Express Mail from Wash-

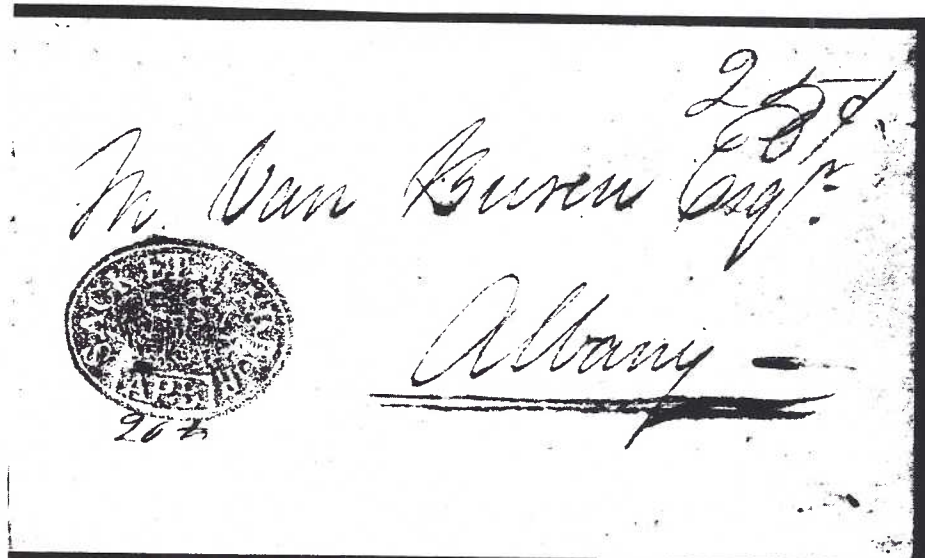
ington, D.C. to Pennsylvania in an effort to expedite this mail. There was no extra charge for the service just the regular postage free. The covers were priced at \$2,000 and \$1,750.

One cover, a letter thrown overboard by an American citizen impressed into the British Navy, asked the U.S. Government to help free him and two other impressed Americans who were with him. The letter was forwarded by the Collector of Baltimore to David Gelston who the sender hoped had the proof necessary to free the Americans. Price: \$15,000.

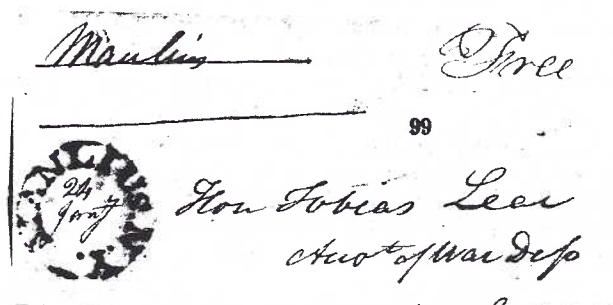
Other groups of covers were blockade covers, they came through the loose British blockade of American vessels, about \$275 average and a group called Post Paid Withdrawn Ship letters which averaged \$2,000 per cover. These letters had to be pre-paid at 1/3 the regular packet rate in advance and had a special backstamp. They came through the ports of London or Liverpool.

Of more general interest, are the selection of Hudson River Mail covers dated between 1812 and 1816. Most came from or to New York City or Albany. Many show the fees brought about by the surcharge on mail to help pay for the War of 1812. None have the Hudson River Mail stamp or on Albany postmark, marks which are normally absent. Three letters are from Athens, N.Y., and two were from Mr. De Lisle's collection. One cover was \$750 because it was the last day of use before the mail contract went into effect and three were less than \$100. One restored rate (April 1816) cover was \$470.

(CONT. ON P. 6)

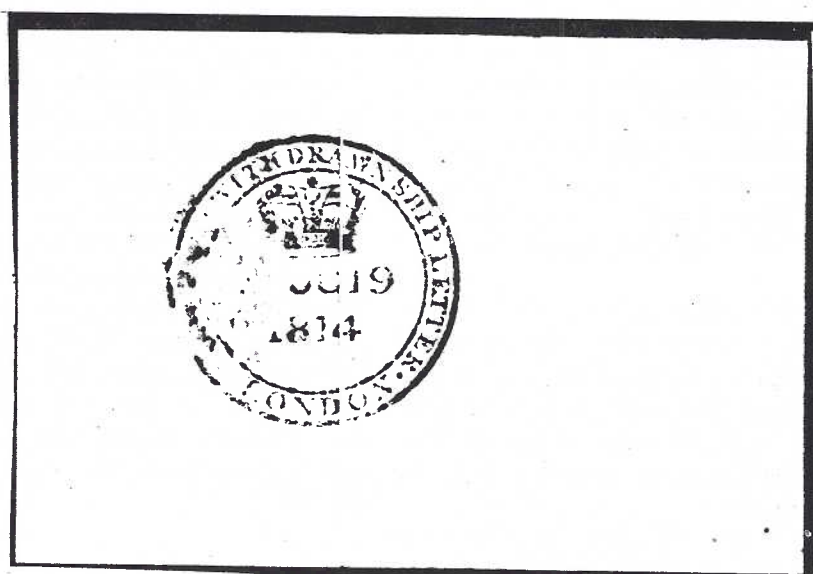


Accountant of the War Dept., 1815 folded letter addressed to Tobias Lear at Washington, "Manlius N.Y." cds, ms "24 Jany" date and "Free" light, even toning, fine strike.....Net



POST PAID WITHDRAWN SHIP LETTERS

A British P.O. Act of September 17, 1814 authorized the sending of letters abroad upon the payment of one third of the pack rates. Such letters were struck with a backstamp and the amount paid noted. An Act of July 11, 1815 withdrew the authorization. Period of usage was less than 11 months.



FRUJOLA AUCTION (CONT. FROM P. 6)

N.Y. Apr 15
 Liver Wolcott Junr Esquire
 Hartford
 Connecticut
 J. P. Pierce Esq

SEP 2
 SARATOGA SPRING
 N.Y. EDWIN
 W. J. C. Esq
 New York City

Free
 Manlius
 Mr. Charles F. White
 care of
 White & Bufford
 New York

Cherment N.Y.
 21 the March
 The Hon. the Comptroller
 City Albany
 N.Y.

PAID
 J. Bremont
 Buffalo
 at signs.

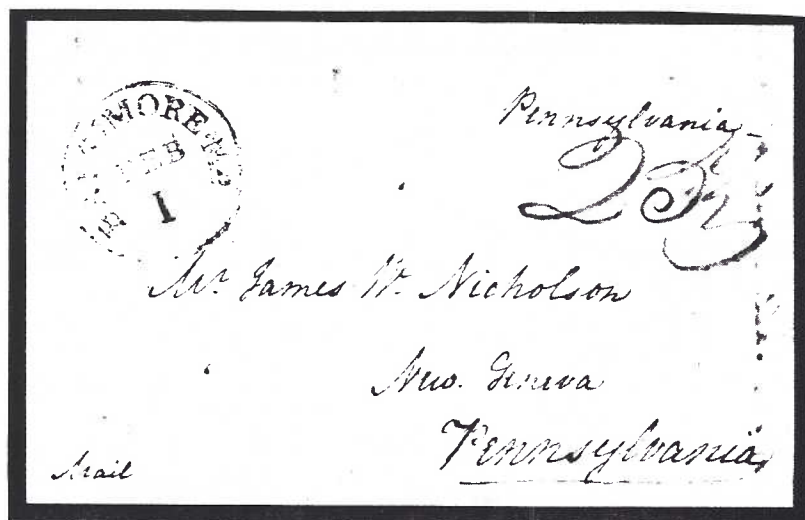
TROY
 JUL 5
 N.Y.
 Dwight Adams Esq
 Commission Merchant
 Broadway
 New York

Among the postmarks which came to my attention were some fancy (N.Y.) Sacket's Harbors with clear centers for the date (day) which was to be written there, Manlius, two manuscript Schenectdys, a straight line Rochester, a Sackets Harbor with a shield in the center and the month abbreviated below it (\$5,000), a straight line abbreviated Wardsbridge (W,dsb,dge) N.Y. (\$700), an abbreviated Poughkeepsie (Poughe) which is not rare (\$150), a letter with a manuscript endorsement stage and no other postal markings, a straight line East Bloomfield, NY with a printed month beneath the town name and room for a written date, and a straight line from Aurelius, NY also with a printed month. This however was all on one line.

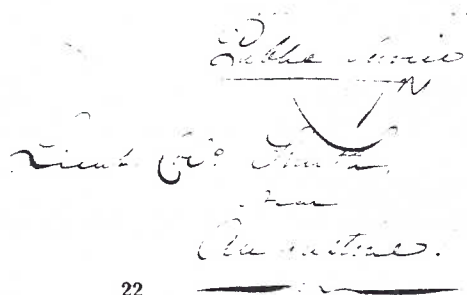
As most of the covers are illustrated and the most expensive covers have their content included, I consider this

a sales catalog which is well worth obtaining if only for the knowledge obtainable from reading it. Some of the covers look so ordinary you might pass right over them.

Mr. Frajola, who is a member of our society, was kind enough to send me illustrations of some of the covers which most interested me, when he had them. They accompany this article. He tells me that catalogs of the sale are available for the asking by writing to Richard Frajola Inc., 85 North St. Danbury, Ct. 06810 - or phoning (203) 790-4311. Some material may also still be available.



Baltimore Md. Feb 1 red cds and ms "25½" war surcharge rate on 1815 folded letter to New Geneva, Penna., first day of new rates, letter mentions war news

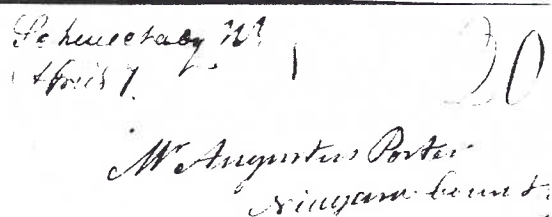


- 22 Florida Fiasco, folded A.L.S., 2p, of Brig. Genl. Thomas Flournoy, Augusta, Ga, August 13, 1812 to "Lt. Col. Smith" near Augustine, black "Aug^a Ga Aug 20" cds and ms "17" rate, letter reads

"Apprehensive that your present situation precludes you from many of the public occurrences, I feel it my duty to apprise you that I am appointed a Brigadier General in the Army of the United States. And altho at present I cannot consider you under my command, in consequence of your having been placed under the directorship of the Governor of this state, yet, it may become my duty to give you aid & support in the case it should be deemed necessary. I will suggest to you the propriety of giving me early information should you be driven back from your present station.

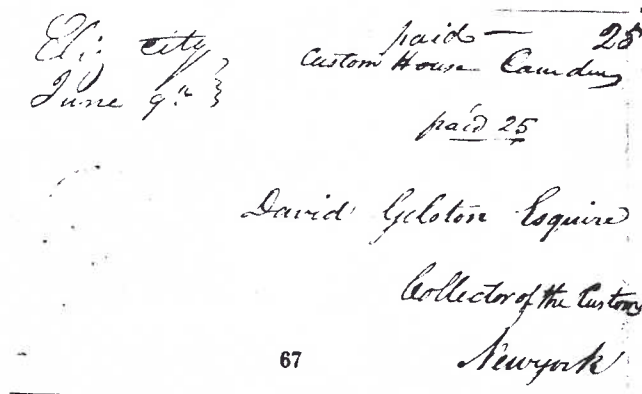
I have no sort of instructions respecting the duties required from you, but I cannot suppress a fear that your station may be a perilous one."

the only example from Smith correspondence with a U.S. pmk addressed to Florida, minor fold repair, ex Meroni, very fine usage to occupied Florida.....Net



Schenectady N.Y. April 7 ms pmk and "20" restored rate (2x10) on partially printed,

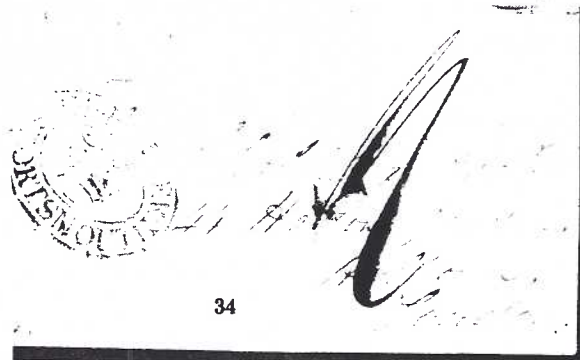
Prisoners Of War, British Transport Office, oval censor hs and red ms "Appl. C.T" endorsement on March 1, 1813 folded letter from Charleston, S.C. to the Captain of an American Privateer at Bordeaux, France, redirected "On Parole, Ashburton, Devon" with ms 1sh rate and "Jy 20 1813" bkst, the addressee was Captain of Privateer Charlotte, the **only recorded example** of the oval hs on a letter to an American Prisoner, very fine.....Net



Eliz. City June 9 ms pmk of Elizabeth City, N.C. and ms "Paid 25" on 1814 folded letter from "Custom House, District of Camden" to Gelston at New York, carried over **Dismal Swamp canal route** to Norfolk, Va, their smudged pmk confirms routing, aged file fold, the **earliest reported** letter carried, under contract, by canal, very fine.....Net

Burning of Washington and Battle of Bladensburg, folded letter from a **British sailor** dated "Chesapeake Sept 16, 1814" to London ms "Melpomene" on inside flap, crowned "Ship Letter Portsmouth" hs and ms 1sh rate (8d inland + 4d ship fee), gratuity waived by Naval Captain, letter includes:

"We have picked up a little in the Prize way since our arrival here, having taken a good deal of tobacco & flour. Should government be liberal enough to give us anything for what was destroyed at Washington it will not have been a bad campaign. We were very sanguine in our expectations before the attack on Baltimore which unfortunately failed, with an ir-repairable loss on our side, Gen. Ross."

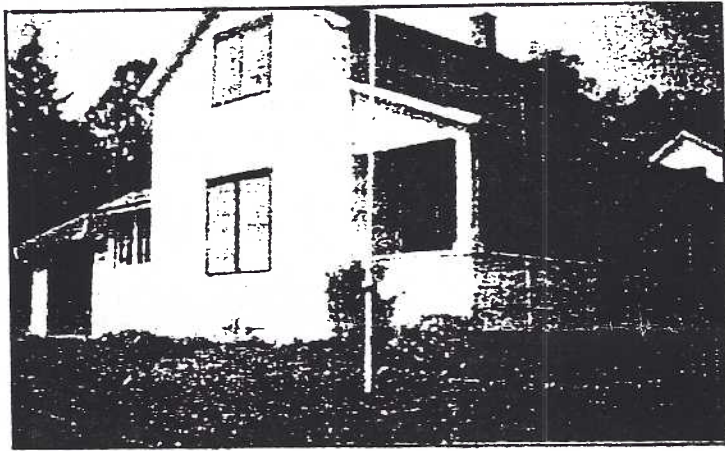


MY AUNT THE POSTMISTRESS

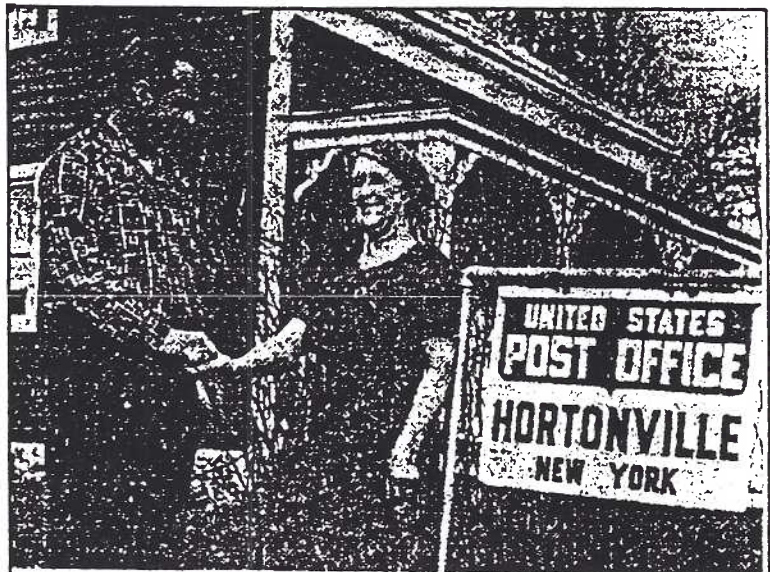
Robert S. Miller

Many city slickers like myself think of a post office as a modern brick edifice, usually situated on a main street, that has a number of people working in it. However, many of the postal facilities in the United States, even to this day, are small, and frequently situated in commercial operations of various kinds. Some are even situated in private homes. Such was the case with the Hortonville Post Office when my aunt was the postmistress.

The photograph shown below shows the home of Maude Miller in Hortonville. The closed in area on the left side of the porch was the post office from 1942 until 1965 when Maude retired.



A photograph from the Sullivan County Democrat of January 6, 1966 shows Maude and Henry Reimer her successor in front of the former Hortonville post office when Maude turned over the post office responsibilities to Mr Reimer. The date was December 29, 1965.



New Hortonville Postmaster - -

Henry Reimer of Hortonville is congratulated by his predecessor, Mrs. Maude Miller, after being sworn in as Postmaster at Hortonville last Wednesday, December 29, 1965. Mrs. Miller had served in the post for 23 years. Photo by Niflet.

PRESIDENT'S CORNER

Dear Members: This will not be a lengthy message as there is not too much that is definitive to report. In talking to members, Society officers and some dealers I am getting mixed vibes. On one hand New York State postal history is not being exhibited and only about one dealer in four has anything to offer and yet at the recent Frajola auction the NYS county lots went for impressive prices.

I recently canvassed the Society directors for short and long range planning suggestions. I would now like to share their suggestions with you.

Short range ideas are:

- Use the Bulletin on a regular basis to keep us moving
- Have regional meetings
- Bring exhibits to meetings for show and tell
- Publish the Otsego County postal history study

Long range ideas include:

- Promote postal history at NYS shows
- Make available Bulletin articles of the past
- Seek out and support publication of NYS postal history.

The above suggestions are not the last word and obviously lack detail. Toward that end regional meetings were scheduled for Oct. 15. It was to be an opportunity to communicate. No business details were scheduled. They were to be discussion meetings with Communications the subject.

Let me conclude with some newsworthy details. John Lange of Ballston Spa has been approved by the board to fill the Director vacancy. Cliff Tuttle surveyed the dealers at CINCOPEX and found 3 out of 11 handling NY postal history. One was not a member. He signed him up and left application blanks with several dealers. David Proulx reports that the Star Cancel book has been reprinted and is available. Emma Koberg will continue as our APS representative. As most of you know we are an APS affiliate. George Bernadt is agreeable to continue handling the auction. Jack Haeleli has volunteered to be the Publications Committee chairman. Dick Hedley and Roger Kline report a regional meeting held at East Aurora with 15 members in attendance.

Mr. Ken de Lisle has provided the Society with a complete set of the Bulletin.

TRADING POST

WANTED: Postcards, covers, photos from Monroe, Orleans, Ontario Counties. Early 1800's needed. Interested Clarkson, Garland, Otis, Sweden. Vern Johnson, 3085 Clarkson-Parma Rd., Brockport, NY 14420.

WANTED: Any written, printed or photographic materials pertaining to Minisink, Center Point, Bushville and/or Greenville in Orange County, N.Y. Catherine Ardler, 124 County Route 35, Port Jervis, NY 12771

WANTED: 19th century US covers/cards with CANCELS with any of these words as part of the town name: FURNACE, FOUNDRY, FACTORY, POTTERY, FORGE, BLOOMERY, TANYARD, QUARRY, WORKS, KILN, MINE, MILL, SHOPS, etc. John Whittlesey, 2218 Jackson Blvd., Univ. Hts., OH 44118

WANTED: US 1869 issue covers from: New Jersey, Staten Island, Long Island, Block Island, Marthas Vineyard, Nantucket. Brad Arch, 144 Hamilton Ave., Clifton, NJ 07011

WANTED: Otsego/Delaware PH. Early India cancels on Victorian issues Scott nos. 2 thru 35. US precancels Scott 1054 onwards. Hulbert, RD #4, Box 4A C, Oneonta, NY 13820

WANTED: Early Saratoga County, NY stampless, particularly Charlton, West Charlton, Ballston X-rds and Milton. John A. Lange Jr., Root Rd, RD #2, Ballston Spa, NY (518) 882-6373

FLORIDA covers wanted. Pre-1900 unusual postmarks of interesting content. Herbert P. McNeal, 520 Lakemont Av. South, Winter Park, FL 32792

WANTED: US mint cut squares and entires - 1960 and before. Ray Lewis, box 749, Gloversville, NY 12078. (518) 725-9161

NOTICE: All Trading Post advertisements MUST be submitted TYPED. Ads must be limited to 25 words of text. Longer ads will be considered paid ads. Untyped ads will not be run.

Society News

NEW MEMBERS

We welcome the following new members into our ranks of New York State postal historians:

Catherine Ardler
Agnes Cavalari
Roger D. Curran
Prof. Harold J. Jonas
Edward Leahy
Dr. Joseph T. Rowbottom III
Marcel Sabourin
John A. Valenti
Loretta M. Winkler

MEMBERSHIP APPLICANTS

Applications for membership have been received from:

Haydon, Roger M.
966 East State St, Ithaca, NY 14850

Interests: pre Civil War
trans-Atlantic mail, esp to/from GB
to NYS

References: commercial philatelic &
bank references provided

Hubler, Julius
94 Danbury Lane, Buffalo, NY 14217

Interests: world postal markings;
Canada 20th century cancels/marks.
France & Germany 20th cent. marks

References: ESPHS member Kline &
personal reference

Jordan, Donald L.
8 Parkway Dr, Sinclairville, NY
14782

Interests: postmarks/historical
items of Sinclairville, Town of
Charlotte, Charlotte Center

References: ESPHS member Martonis

Laliberte, Lawrence J.
P.O. Box 40, Pawling, NY 12564

Interests: UN; US; prexies; Canada;
NYS RPO's

References: ESPHS member Hart

Mehrer, Jim
2405 30th St, Rock Island, IL 61201

Interests: exposition cancels;
naval ship cancels; Doane cancels

References: APS

Metz, Peter
176 Hartford Ave, Buffalo, NY 14223

Interests: Netherlands; Iceland;
Austria; UN; space

References: ESPHS member Calkins

Stanton, Thomas E.
2109 Alice Ave Apt 2, Oxon Hill,
MD 20745

Interests: NYS railroads &
steamboats (pre Civil War);
St. Louis PH; RR PH; reconstruction
PH

References: APS

Tocher, Don
Box 582, Westborough, MA 01581

Interests: US classics; PH (dealer)

References: APS

ADDRESS CHANGES

Please note the following address changes in your rosters. Only the new address is shown below.

John H. Barwis
P.O. Box 4704
Houston, TX 77210-4704

Henry A. Bordwell
Box 446
Rochester, NY 14603

Russell A. Crow
3003 Hanover Ave
Richmond, VA 23221

John V. Crowley
RR 1
Edmeston, NY 13335

Robert S. Dyer
Apt B-310
7501 Democracy Blvd
Bethesda, MD 20817

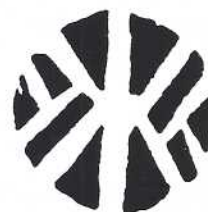
William Hart
P.O. Box 167
Shrub Oak, NY 10588

Raymond Jacobs
13 Owen Ave
Queensbury, NY 12804

Raymond R. Lewis
34 Grand St
Gloversville, NY 12078

Robert J. Rau
Trackside II
Michael Circle Apt - C-11
Johnstown, NY 12095

William A. Thoman
Box 371
Homer, NY 13077



6

NEW MEMBERS INVITED!

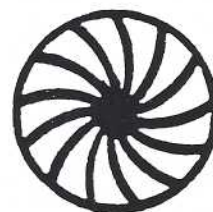
**U. S.
Cancellation
Club**

APS Affiliate #75

Devoted to the study of U.S. cancellations and postmarks. We publish a lively journal (sample \$1.00), run a sales department for stamps and covers and encourage cancellation exhibits through USCC awards. Send inquiries to George and Evelyn Lewis, P.O. Box 545, Clearfield, PA 16830.



Paid



PAID



AUCTION ACTION

Auction ManagerGEORGE BERNADT
1470 Wyoming Ave. Schenectady, N.Y. 12308



Turn your surplus PH material
into CASH...send lots for our
auctions to George Bernadt!!!

SALE #63

Bidders are reminded of the bidding increments for the
ESPHS mail auctions. They are:

Up to \$ 5.00....25 cent increments
\$ 5.01 to \$20.00....50 cent increments
\$20.01 to \$35.00....\$1.00 increments
Over \$35.00....\$2.50 increments

Bidders are requested to settle their accounts as soon as
possible after notification that they have successfully bid on
(a) lot(s).

NOTICE!!

Please do NOT use post cards for your bids. They frequently
take 7 to 10 days to arrive and have resulted in several of you
having your bids arrive after lots have been mailed!!!!
We are again in desperate need of good items for our sales!
Many of you have promised material but it has not been sent.
I am short of lots for upcoming sales.

Your Auction manager

IMPORTANT

Please, in sending payment for auction lots, STAMPS are not
acceptable
Sending cash is not recommended. Do so at your own risk.
There is much delay in sending payment. Please be prompt,
for your auctioneer's sake!!!

PRICES REALIZED SALE # 62

1. \$ 9.50	27. \$14.00	53. \$ 7.50	79. \$ 4.25
2. 10.50	28. 16.00	54. 27.00	80. 25.00
3. 6.00	29. "	55. 8.00	81. "
4. 7.50	30. 10.50	56. 4.50	82. 5.50
5. 6.00	31. 16.00	57. 13.00	83. 1.25
6. 8.50	32. 12.50	58. 4.00	84. 10.50
7. 15.00	33. 15.50	59. 7.50	85. 7.50
8. 7.50	34. 17.00	60. 16.00	86. 9.00
9. 9.00	35. 6.00	61. 13.00	87. "
10. 3.25	36. 3.25	62. 10.50	88. 11.00
11. 6.50	37. 8.50	63. 30.00	89. 7.00
12. 6.50	38. 3.25	64. 8.50	90. 5.00
13. 5.50	39. 9.50	65. 3.00	91. "
14. 3.00	40. 10.50	66. "	92. 7.00
15. 7.50	41. 7.50	67. 7.00	93. 2.00
16. 8.00	42. 7.50	68. 16.00	94. 7.00
17. 1.25	43. 15.50	69. "	95. 5.50
18. 16.00	44. 6.50	70. 4.00	96. 2.00
19. 10.00	45. 6.50	71. 1.00	97. 11.50
20. 8.00	46. 4.50	72. 6.00	98. "
21. 14.00	47. 4.50	73. 6.00	99. 3.75
22. 6.50	48. 6.00	74. 10.50	100. 2.50
23. 8.00	49. 4.50	75. 11.00	101. 12.00
24. 10.50	50. 12.00	76. 6.00	102. 7.00
25. 16.00	51. 5.50	77. 5.50	103. 21.00
26. 16.00	52. 6.00	78. 7.00	

TOTAL
SALES 849.25

- KINGSTON/MD/N.YORK in faint red ODS-1819-Also has sm PAID in rec box w msc 10 on VF FLS.
- 5 FLSs w OVAL DSs--2 w v faint red KINGSTON ODSs--2 diff ROME 1 is black 1829 ODS-other blue 1846 DODS & last is or-red 1836 CATSKIL ODS--All strikes are lt.& missing some letters..A nice lot!
- MSC-WAWARSING/Oct25 6 on VF 1831 FLS--Has interesting conts re: BOATS & the CANAL etc...
- MSC-WAWARSING/April 2nd/Wm. Nixon PH w Free on VF 1821 FLS--Long interesting let about building CANAL BOATS,etc,etc!!!
- 2 LANSINGBURGH items-1.-MSC LANSINGBURGH/May 14 & 6 on 1825 FLS(ffs) Conts-stockholders list of COHOES MANUFACTURING CO..2nd has clear or-red 30m LANSINGBURGH /MD/N.Y. cds w msc 12 1/2 on VF 1835 FLS Long int- letter
- 2 ALBANY items-1 has or-red CDS w msc 1 & is datelined UTICA (Bootlegged drop letter) on F+ 1835 FLS--Other has or-red ALBANY CDS w HS 5 on VF 1849 FLS!
- 2 lovely orange AUBURN/MD/N.Y. in huge 34m CDSs-1 has HS PAID 3- Other has HS 5-Both on VF ENVs!!!
- BAINBRIDGE/MD/N.Y. in clear 30m CDS w PAID/3-in-circle on sl stained & aged ENV...
- BROOKLYN./MD/N.Y in BOLD black 30m CDS w RED PAID/3 on somewhat aged yel ENV..Unusual color combination!!
- 2 nice CANANDAIGUA items -Both in Balloon 35m CDSs. 1 is black w PAID/3-in-cir, other has HS 5-2 VF ENVs!!-
- 3 stpls ENVs--CANANDAIGUA/MD/N.Y. in lg 34m CDS w HS PAID/3-in-cir-2.CLIFTON SPRINGS/MD/N.Y. in 30m CDS w PAID(arc)/3 HS. & 3. AUBURN/MD/N.Y.(NY fan) in blue 30m CDS w HS 5 ...
- 3 stpls covs-FREDONIA/MD/N.Y in sm 23m or-red CDS w msc Paid 183/4-1833.-2.COLD-SP N.Y./MD in 32m or-red CDS w msc 183/4-NYD.-3.PALMYRA/MD/N.Y. in sl blurred 30m or-red CDS w msc 37 1/2-1839..F sl aged FLSs...
- 2 items-stpls CLINTON/MD/N.Y. in clear 31m CDS w HS PAID/3-in-cir on VF ENV. -2.magenta PROSPECT,/MAY 28 1881/N.Y. in clear CDS ties 3ct BN to VF ENV.Has br co!
- 2 DELHI stpls covs-Clear GREEN DELHI N.Y./MD in 30m CDS w HS PAID+msc 12 1/2 on F+(ff) 1844 FLS.-
- 2.DELHI/MD/N.Y. in clear 33m orange CDS w HS 5 on VF 1849 FLS addr to HAMILTON COLLEGE.Has long int letter!
- HORNELLVILLE/MD/N.Y. in clear red 32m CDS w HS 5 on VF slightly aged ENV.....!!!
- 2 stpls covs--Bold LANSINGBURGH/MD.N.Y. in or-red 30m CDS w huge HS 5 on F+ FLS.-2.LOCKPORT/MD/N.Y. in or-red 30m CDS w HS PAID 10 on VF 1846 FLS...
- MSC- TRENTON NY/March 15 & Paid 3 on VF sm ENV.NYD
- LYONS/MD/N.Y. in bold blue 30m CDS w lg HS 10 dock. 1851 on VF ENV.....!!!
- 2 stpls covs-Both have ltly str 30m LYONS/MD/N.Y.in or-red CDSs. 1 w lg HS 10-on VF 1847 ENV.Other w V-in-double cir. on 1847 F+FLS
- 2 VF stpls ENVs--MARION/MD/N.Y. in sl blurred 30m CDS w HS PAID/3-in-cir.-2.PALMYRA/MD/N.Y.(NY fan) in clear blue 30m CDS w HS V--BOTH HAVE CONTENTS----!!!
- 5 WATERTOWN stpls covs--3 have 30m CDSs(2 or-red 1 black) of which 2 have HS PAIDs-1840-41-42. Others blue 29m CDSs(let smaller) w HS 5 & HS 10-1848. All are F- VF FLSs...A nice lot for the JEFFERSON Co. specialist!
- WESTPORT/MD/N.Y. in 32m CDS w HS PAID/3-in-cir & HS 5(struck twice) ++ msc Due etc.all on face of VF ENV!!!
- PRINCETON/MD/N.J. in clear blue 29m CDS w HS 5-in-rec(14x17m) on VF 1850 FLS. Addr to UNION COL.Int conts 15 NYS stpls covs-Ave to F strikes-No NYC. Noticed TRUMANSBURGH;SALINA;ALBION;SING SING;GOSHEN;etc,etc 7 FLSs w NEW YORK CITY CDSs--1806-40s. HSS FREE & PAID--rates inc 51ct & 55 1/2,etc. An unusual lot!!!!
- #11-4nargs(close) tied by lg bold 32m SARATOGA SPRINGS/MD(both underlined)/N.Y. to VF ENV...
- #11-4 marg-tied by bold CHICAGO/MD/ILLS 31m CDS to VF ENV...

DEC. 1ST 1989 DEADLINE

28. #11-3marg-tied by bold blue OSAGE/MD/Iowa 33m CDS to slightly aged ENV...
29. #26-centered sheet marg copy tied by s-o-n ALBANY NY CDS w HS FORWARDED & 3 + NEWPORT/MDY/R.I. CDS.all on VF 1861 ENV..A v v nice item!!!
30. #26 tied by clear DARIEN CENTRE/MD/N.Y. TO F+ ENV!
31. MSC Lawrenceville/May 24 w pen-canc. centered #26 on sl aged F ENV..Has contents dated 1861...
32. RICHFIELD/MD/N.Y. in ORANGE CDS. Has pen-canc #26-sheet marg copy-on yel ENV-Apparently a PATRIOTIC but sl shortened at left leaving imprinted "(Uni)on Forver" A very,very unusual OTSEGO CO. item!!!!
33. 2 VF ENVS w VF #26s-TROY N.Y./MAY/17/1858/PAID(curved at bottom of lg CDS). -2. NEW-YORK/JAN12(s-o-n)1857 /PAID(in s/l at bottom)...2 exceptionally fine items!!!!
34. 5 #U10 ENTS-3 white 2 buff- 1 has embossed cc & NOR BUFFALO N.Y cds; another is LADY'S size sm ENT;another has DO cc-KENYON & POTTER/DRUGGISTS/SYRACUSE,N.Y. w lg yr dated(1860) SYRACUSE CDS..All have clear NYS CDSs!!
35. #26 w s-o-n PAID & JEWETT CITY/MD/CT. CDS on VF ENV....
36. 2 #26s tied by OCTAGONAL DSs. PHILADELPHIA/MDY/Pa. to VF ENV...
37. BALLOON-36m SNICKERSVILLE/MD/Va. in bold CDS ties VF #26 to embossed LADY'S env-VF--Scarce mkg!!!!
38. 3 VF covs w #26s-1.tied by lg or-red MILWAUKIE/MAR 11 1861 cds + BLACK GRILL KIL-2.Lg blue MEDFIELD/MD/MS. CDS w blue cork kil-3.sm or-red DLDS--BOSTON/MD/MASS & Lg grid kil w PAID across center tying stamp---All are VF ENVS...An unusually fine lot!!!!
39. TELEGRAPH cov-Lg fancy cc of MORSE'S/Telegraphic Institute/Office 14 Waiting Block/SYRACUSE,N.Y. & CDS of that place w tar kil tying #65(sl dan in opening) o/w VF---
40. 5 VF covs w #65s All have NYS CDSs.
41. 12 covs w #65s--All have BUFFALO,N.Y. CDSs w diff cork kils--some fancy! Several have conts.---
42. 7 covs w #65s-6 NYS+1Calif.-1 has embossed circular cc of CHARLES SCRIBNER & CO..All have elaborate cork kils---
43. 25 covs w #65s--G to VF--Some have contents---
44. #65 tied by fancy tar kil of CARROLLTON,ILL on somewhat soiled & aged ENV--Not tied,still nice!!
45. X-BORDER cov w cc #88-100 green-on sl aged F+ sm ENV to CANADA backstamped TORONTO,CW...
46. X-BORDER cov w pair #114s tied by TROY,NY CDSs to VF sm ENV..Has CLINTON/UC backstamp Seldon seen use!!!
47. Very Scarce ULSTER CO MSC Harbltown/Jan8/1868 ties faded #65 to worn ENV...On nicely written up and illustrated loose leaf page!!!!
48. 3 items w ALEXANDRIA/MDY/JEFF.CO.N.Y. CDSs--1 magenta,another has 3c BN--2 are on diff POST CARDS #UX5 & #UX7...
49. Fancy LORRAINE,/SEP27 1186/NEW YORK townmark--Outer rim is Octagonal, inner circle-round w tar kil tying 1c blue BN to F(sm stain) ENV--Has cc...
50. ROCHESTER,NY CDS & large(10x14m)"R" tying 3c BN to VF orange ENV w cc of P.Christian,Union Mills,/ROCHESTER N.Y.---A lovely item!!!!
51. 7 BN period covs w Fancy Killers &/or Fancy Townmarks. Includes WHEEL OF FORTUNE kil on morning cov ; a PINWHEEL Kil.,etc. !!!
52. 17 covs w 3c gr BNs. All have fancy kils inc neg numbers & letters of NY & BOSTON. Mostly clear strikes on F ENVS..Well worth a bid!!!
53. 10 BN covs-w 3c greens & 2c browns...
54. BN cov to CHILE,South Am. Has 2 10c brs + 3 2c orange BNs(1 of latter folded over top of ENV)--Has violet CDS & unusual or-red NYC binocular type HS w NEW YORK /MD in left cir. & lg 12 in right cir.--also msc per Steamer/Via Panama. All on VF sl aged ENV!!!!
55. 5c blue TAYLOR BN on cov to TURKEY. Has 1879 DCDS of NORTH WOBURN,Mass.(magenta) + or-red BOSTON/MD/PAID ALL DIRECT-CDS..Also KAISERLICH DEUTCHES POSTAMT/1910/ No 1 CDS on reverse. Very desirable cov!!
56. RARE-R.F.D. item-Lg 50x63m illus of R.F.D. MAIL WAGON(horse drawn) w carrier leaning out & handing letter to patron,etc.etc. + caption- This will interest you. Also has 1905 PHILADELPHIA,Pa Mach cancel tying #300 to sl aged VF ENV addr to S New Berlin,N.Y....!
57. Overall gray ADV cov of NYS AGRICULTURAL WORKS above & Wheeler,Melich & Co./ALBANY,N.Y. below illus of HORSE POWERED MACHINE. Has s/e #65 tied by grid kil, & clear CHATHAM 4 CORNERS/MD/N.Y.cds.VF-some dock on face
58. R.R. item-3c gr BN tied by huge S w CHICAGO CDS & cc of Union R.R. and Transportation Co.'s,above & UNION LINE./W.W. CHANDLER,Agent./Metropolitan Block,CHICAGO. all in blue, below deep red illus of a STAR.VF ENV....!
59. Overall gray ADV cov w lg illus of a MACHINE,& in huge let across rest of VF ENV-T.R.BAILEY & VAIL/MAKERS OF/WOOD AND IRON MACHINERY/LOCKPORT,N.Y.--Has 3c gr BN ADV cov-Illus of 3 PICKSIES around brick lining w caption-FIRE BRICK LININGS/McLEOD & HENRY Co./TROY,N.Y. VF 2c gr ENT has 1898 TROY Flag cancel. A GEM!!!!
60. 2 ADV covs-1 has DEEP ORANGE 57x44 vert illus w McLEOD & HENRY/HIGH GRADE/FIRE BRICK/STEEL MIXTURE/TROY N.Y.on VF 2c red ENT w 1899 TROY Flag cancel.-2.Has solid DARK BLUE cc w neg McLEOD & HENRY Co/HIGH GRADE/FIRE BRICK/STEEL MIXTURE/TROY,N.Y. on VF 2c red ENT w 1901 TROY Machine cancel...A v striking pair!!!!
61. ADV cov-Vert DARK BROWN 70x37 illus. border of which is made up of brick wall within which is a second border of Fancy bricks surrounding McLEOD & HENRY Co/ FIRE BRICKS/in all its Branches-Troy,N.Y.-Another GEM!!
62. 4 F+ ADV covs-1896-99 period w 1c or 2c 1895 or 1898 difinitives, 3 have illus,4th has dark blue neg cc
63. 3 ADV covs-All have illus on F+ ENVS..Nice!!
64. 5 ADV covs(2 are fronts)- 2 have 1c Columbians & cc of logo of THE/NORTH WESTERN/LINE/C. & N.W.Ry + a BUFFALO,N.Y. addr.;3rd has lg cc of HORSEHEADS BRIDGE CO.;4th(front) has v lg fan cc of Cigar Makers Union w blue illus UNION MADE CIGARS Label-BUFFALO N.Y. w 1c 1890 def. & 5.-has overall adv of A.STRASSER, BUFFALO,NY
65. ADV cov-STRIKING!-Overall dark red w illus RED BIRD COFFEE package in white rec at left + white recs for stamp(Two Cent WASH HEAD) & addr--Reverse is also solid red w neg RED BIRD COFFE,etc. All on VF ENV!!!!
66. 3 covs w Religious connotations-1 has blue illus of M.E. Church/NEW BERLIN,N.Y. on sl aged ENV w 2c Colum.
67. 3 HOTEL ADV covs-The ORIENTAL in DALLAS,TX w illus of same,etc. w 2c red tied by 1904 DALLAS mach cano to somewhat worn ENV.-2.VITA PARK HOUSE in EEAVER DAM,WIS. w lg illus of same, on sl worn ENV w 1c blue BN.-3. The BUTTERFIELD of UTICA,N.Y. w 1895 Mach cano of UTICA tying 2c red to sl aged ENV....An unusual lot!
68. 4 somewhat aged ADV covs- 2 have diff lg illus of The VICTOR SAFE w 3c gr BNs.-3.Has pair 1c blue BNs & cc of COMMON SENSE STEAM EVAPORATOR CO.-4. Has 1c blue BN & lg illus of a STEAM EVAPORATOR,etc...
69. A series of 6(seemingly related to TELEPHONE CONVERSATIONS)-ADV covs. All have 1c #300 & 1905-06 Philadelphia mach cancels on F+ ENVS. V.V.UNUSUAL!!!!
70. ALBANY item-A lg beautiful purple illus of LIBERTY BELL w EAGLE perched thereon & surrounded by FLAGS & RIFLES. Has 1c blue BN tied by CDS to F+ ENV. Reverse has list of prices for CENTENNIAL ENVELOPES..LOVELY!!!!
71. ALBANY ADV cov-Overall lt. green w red fancy oval (made of buckled belt) cc of F.WOOSTER & CO./WHOLESALE/ FISH & SALT /MERCHANTS/ALBANY,N.Y..Has 1c blue BN & ALBANY CDS on VF ENV..
72. V unusual ROCHESTER ADV cov-Has lg illus of FARMER planting seeds & notation-"Entered according to the Act of Congress, in the year 1878, etc..."Picture captioned CHASE BROS. above and Nurserymen & Seedmen/ROCHESTER, N.Y. below. Has 1c blue BN on VF+ ENV!!!!
73. Another ROCHESTER ADV cov-Has lg scarlet illus of 3 STORY HOUSE inscribed No.2 EAST PARK/J.AUSTIN SHAW,/NURSERYMAN- captioned ROCHESTER,N.Y./SPECIALTIES/ etc.etc. & across center of env-SALESMEN WANTED.Has 1c blue BN tied to VF ENV....!!!!
74. 2 covs w huge illus ocs-1 has full sized illus of PORTO RICAN & BRITISH STAMPS w THE ST. LOUIS PHILATELIST,/etc.etc..between the stamps. Has 1c blue BN on brittle ENV-minor tears at top.-2. has 72x42m dark blue cc w illus of STOVE & ROME STOVE WORKS,etc. 1899 CDSs of ROME,GA. tie 2 2c reds to VF ENV.
75. 8 covs,mostly w BNs & fancy or illus ocs-1 has cc HOTEL CLARENDON/etc./SYRACUSE,NY & OVERALL ADV of MERCHANTS GARGLING OIL on reverse. Another has lg illus of a BOILER captioned-Syracuse Boiler & Sheet Iron Works,/etc. w 1898 mach cano of that place(front only)
76. 2 early REGISTERED covs-1 has lg illus of PIG w RIDER holding sign saying- Bound for J.P Watts/DRY GOODS/ etc. Has 10c BN tied to VF 2c br ENT.- 2nd has 2 6c #305s neatly tied to VF 3c gr ENT..Both have proper REGISTRY markings..A v nice pair!!!!
77. HEMPSTEAD,NY 1895 CDS on Regis cov w 2,3 & 5stamps of 1894-95 def series + HS 10318 & msc Reg.No. 187 on face & lg registry HS on reverse F+(sm closed tear at top) sm ENV....
- 78.

79. 3 covs-1 Regis. w pr 6c or WASH HEADS & Reg mks. Others have unusual bkstps-1 has 1908 LITTLE FALLS Flag cancel WATERTOWN CDS w RECEIVED in kil bars-other has serrated CDS w SENNET, NEB/8 JUL 1882/E.P. DERRY, P.M.-Latter has strip of 3 1c bl BNS folded over at top w 1 cut into at right in opening. An interesting lot!
80. 4 covs-2 w 2c Columbians tied by 1893 SENECA FALL, NY CDSs to VF ENVs w ccs. Others have lg fancy ccs of SENECA FALLS enterprizes w 2c reds tied by 1896 & 98 SENECA FALLS CDSs to F ENVs (1 shortened at right)...
81. 5 GENEVA, NY covs w fancy or illus ccs-all have GENEVA, NY CDSs incl 1 Flag cancel. 4 VF, 1 rough at rt...
82. 15 covs incl 5 PCs w DELAWARE CO. DPOs--1 PC has picture of POSTMAN & SM BOY, captioned WATCHER GOT FER ME?..Noticed-HORTON; GRANTON; OULEBOUT; ROCK RIFT; etc all F
83. 11 D.P.O. covs mostly w BNS incl 1 w #65 & PURDYS SATION CDS. Also seen-BUSKIRKS BRIDGE; MUNNSVILLE; STONY FORD; SING SING; SANFORDS CORNERS; NEWVILLE; etc. etc...
84. 8 ROCHESTER, NY items-6 1800s BANK CHECKS 2 w Rev stamps 1 w imprinted or. Revenue--2 1934 cacheted covs- NAT. CENT. & NAT G.A.R. ENCAMPMENT...
85. 7 CACHETED covs--incl ALBANY-ADM TO UNION JULY 26 1788; HICKSVILLE TERCENTENNIAL; 1st BIBLE WEEK IN AM. etc.
86. 4 BROOKLYN, NY items-3 cacheted covs-2 diff CENT. CELEB. + BROOKLYN DAILY EAGLE AM LEGION CONV cov. 4th is PC picturing BOROUGH HALL, BROOKLYN w BL OF 4 1/2c WASH. BI-CENT, etc....
87. 10 SUFFOLK CO items-3 AQUEBOGUE of which 1 is Regis. w 10c yel WASH HEAD on 2c red ENT.-Another is SPEC. DEL w 1910 CDS--4th has JAMESPORT CDS on 2c WASH BI-CENT ENT. etc.. Incl 1 w HS in purple-Do your bit!/BUY LIBERTY LOAN BONDS/Inquire at any bank or post office...Latter v unusual!!!
88. 4 covs w early commems-1 w 2c TRANS-MISS. & CATO, NY CDS--2 have ALASKA-YUKONS (1 w 1909 AUBURN, NY Flag cancel, other w lg illus of ORIENTA METAL BED CO. Bldgs. Last has 2c COL. w ADV of PORT BYRON CHRONICLE at top & left side....
89. 4 covs w early commems--1 has pr 1c LEX-CONCORD- Another has 2c LEX-CON-2 have 2c COLUMBS 1 of which has fancy lg cc of THE BURDETT COLLEGE/of Business Shorthand
90. #644 BURGUYNE on F.D.C. VF addr & uncach.
91. 1913 XMAS SEAL #WX13-on reverse of decorated XMAS cov w #398 tied by SYRACUSE mach cancel to F ENV...

92. 1c PARCEL POST #Q1 on F clean ENV w fancy cc.
93. 2 #OX12 or 13 on F+ ENV w STRATFORD HOUSE illus cc + purple HS-"Received" in bad condition at N.Y.P.O. STA G" struck twice!!!
94. F 1958 cov w violet HS-NO SUCH STREET/AT BRONXVILLE N.Y. and addr penciled out.POINTING HAND on reverse
95. PREXY cov-w HS Via Air Mail/From Coast Onward To Destination- on VF ADV cov w 1c+5c tied by HONOLULU 1944 cds..Scarce mkg.!!!!
96. 3 PREXY covs-1 Regis Airmail w 20c+5c #C32 on VF ENV w FORT LAUDERDALE, FL & ALBANY, NY Regis Mks!-2 has pr 7c + 2 2c on F+ ENV.-3. has mixed franking-2c & 3c PREXYs +13c of previous defin.series on somewhat aged ENV w WAYLAND N.Y. Reg. Mks. An interesting lot!!!
97. 2 PREXY covs-1 has 25c + pr 5c ROOSEVELT commems. on VF Reg ENV w GLOVERSVILLE, NY Reg Mks.-2 has #801 + #820 + #831 + #832 on somewhat soiled (has remnants of lg wax seal thereon) TAG w SCHOHARIE, NY Reg Mks...
98. 2 HUDSON-FULTON PCs, sl aged-1 shows "CLERMONT" on river w insert portrait of FULTON--Other shows "HALFMOON" & Indians on river & insert of H. HUDSON Latter has 1909 CDS of BROOKLYN, FLATBUSH STA. tying ONE CENT FRANK HEAD...
99. 6 F+ PCs w R.F.D.s--All NYS-1 GREENVILLE; 2 ORLEANS FOUR FOUR CORNERS; 2 MADRID SPRINGS & 1 MOHAWK...
100. 5 PCs w R.F.D.s--All NYS--ALEXANDER; EAST BETHANY; EAST PEMBROKE; MADRID SPRINGS & ALTHAN...
101. 3 items-2 PCs, 1 w view of PINE CAMP & PINE CAMP, NY CDS tying ONE CENT FRANK HEAD.-2. 1907 CEARVILLE, NY CDS ties 1c REVENUE stamp (sm piece missing). 3rd is sm neat ENV w #319 tied by 1908 AURORA, ILL Flag cancel. All VF...
102. 14 PCs-13 have MILITARY camp, etc views-CAMP SMITH; PEEKSKILL; FT. SLOCUM; SYRACUSE; etc. 15th has TROOP D(NY State Troopers) in front of SYRACUSE Armory. NICE!!
103. 14 PCs similar to above but w diff views. ALSO NICE!
104. 4 PCs w NYS DOANE canc--LAGRANGEVILLE; MEDUSA; LAKE PLACID & UNION SOCIETY..All F or better...
105. CANADA cov- Somewhat aged & worn ENV w 5c BEAVER #15 tied by grid & 1864 MONTREAL CDS...

DEADLINE FOR BIDS DEC. 1, 1989

DEC. 1, 1989

EMPIRE STATE POSTAL HISTORY SOCIETY

P.O. Box 5475

Albany, NY 12205

FIRST CLASS MAIL

David Przepiora
187 Meadowbrook Pky
Cheektowaga, NY

14206-2422

