

Brown Article

\$3



LONG ISLAND POSTAL HISTORIAN

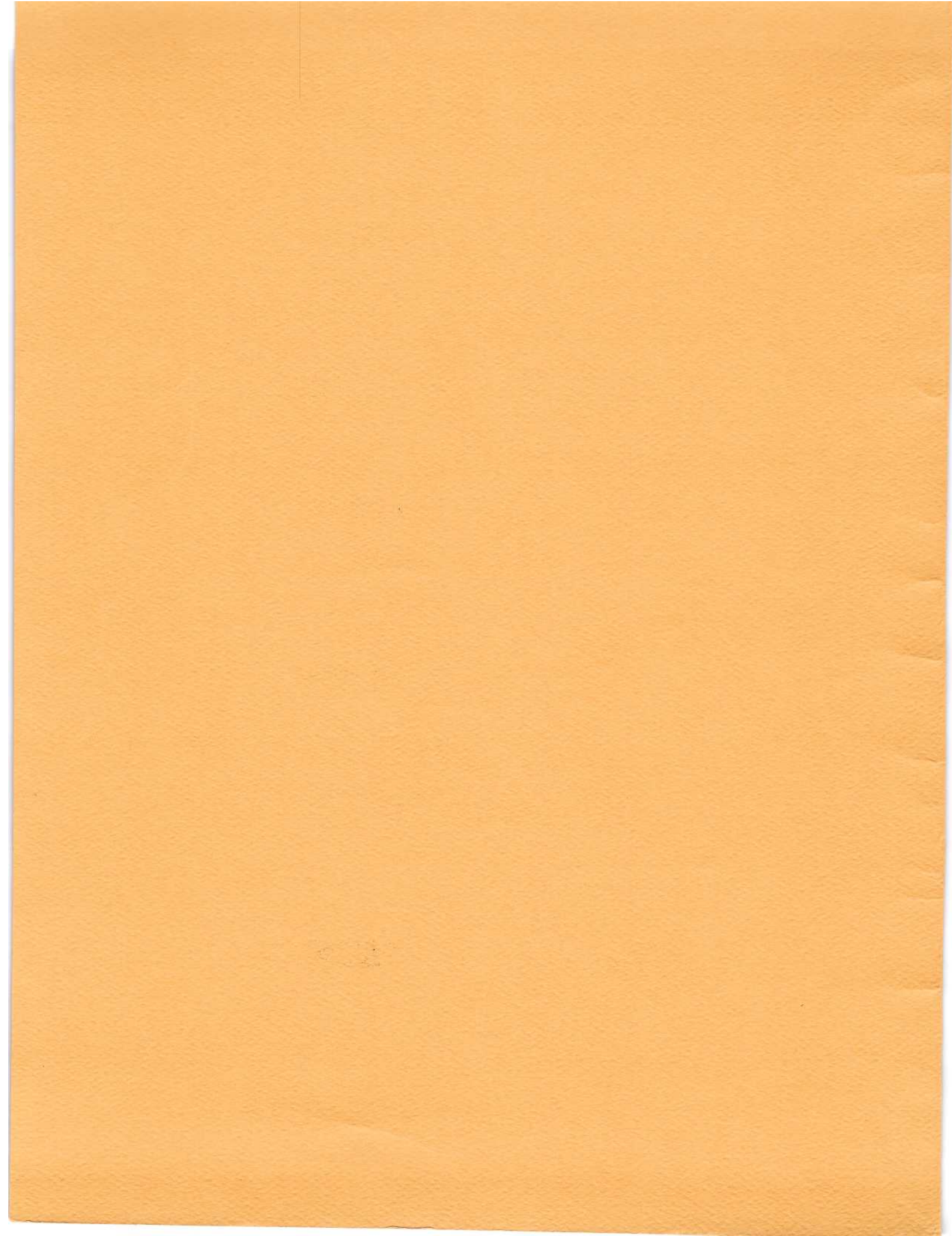
THE NEWSLETTER AND JOURNAL OF THE LONG ISLAND POSTAL HISTORY SOCIETY



Dedicated to the collection and research of the postal history of
Brooklyn (Kings Co.), Queens, Nassau and Suffolk Counties.



VOLUME 11, NO. 3, FALL 1987 WHOLE NO. 22



Long Island Postal Historian

The Newsletter and Journal of the Long Island Postal History Society
APS Affiliate No. 154

FALL 1987 VOLUME 11 No. 3 WHOLE No. 22

Table of Contents

President's Message.....	99
From the Editor's Desk.....	100
Secretary's Notes and Correspondence.....	101
Long Island and the United Nations by Carl F. Baker.....	106
Long Island Wind Sock - Idlewild Airport Dedication by R. Miller....	116
Melville, N.Y. A Mystery Solved by J. Fred Rodriguez.....	119
A Report from Brian Levy, APS Representative.....	121
L.I. Post Offices-Part VIII-Another Sampling by Rodriguez & Price...	122
The Patchogue P.O. - An 1898 Profile from the Patchogue Argus.....	144
Auction Action - Long Island Postal History.....	145
Classified Ads.....	146

Officers

J. Fred Rodriguez.....	Acting President and Editor
P.O. Box 112005, Miami, Fla. 33111	
Joel Shapiro.....	Vice President and Advertising Manager
135 East 83rd St., New York, N.Y. 10028	
Daniel M. Knowles, M.D.	Secretary
97-10 71st Ave., Forest Hills, N.Y. 11375	
John M. Price, Jr., M.D.	Treasurer
8 Woodland Place, Great Neck, N.Y. 11021	
Brian Levy.....	Director and APS Representative
1983 Guildford Park Drive, Seaford, N.Y. 11783	
Martin Margulis.....	Director
1368 Metropolitan Ave., Bronx, N.Y. 10462	
Brendan McCann.....	Director and Publicity Chairman
65-39 182nd St., Flushing, N.Y. 11365	
Carl F. Baker.....	Director (Past President)
140 Lewis Road, Northport, N. Y. 11748	

Membership in the LIPHS begins on August 1, 1987 and expires on Dec. 31, 1988. Back issues will be provided to those joining or renewing after that date. A completed application and dues check are to be sent to the Secretary at the above address. See back page for application form. Dues are as follows:

Regular.....	\$ 15	Patron.....	\$ 50
Sustaining.....	\$ 25	Life.....	\$200

See the Classified Ads section for advertising rates.

PRESIDENT'S MESSAGE

Membership renewals have been coming in steadily. The increase in membership dues was inevitable, however the 17 month renewal period has soften the impact. Starting in 1989 we will be on an annual membership cycle once again. Please renew your membership if you have not done so. An asterisk (*) next to your name on the address label indicates that this will be the last issue of the Long Island Postal Historian to be mailed to you unless the Treasurer receives your check soon.

We are planning a Society meeting in the fall for all members. It will probably be held in the middle of November in New York. We are trying to get the Collector's Club facilities for the meeting. A separate mailing and announcements in the philatelic press will be made in due time. Plan to attend. An interesting program is planned. A short (promise!) Board meeting will precede the general membership get together.

Remember to support your editor and the committee chairmen. See you in mid-November.


J. FRED RODRIGUEZ
ACTING PRESIDENT





From the Editor's Desk

Welcome to another issue of the Long Island Postal Historian. The lead article is from Carl Baker, a contributing editor to this pages. This time he writes about the role of the post office and the United Nations while it was on Long Island during its early years after World War II. This article is part of the MODERN postal history of L.I. which is as interesting and important as that from the eighteenth and nineteenth centuries. Bob Miller, contributing editor, continues to write about the airmail on L.I. His regular feature column entitled the Long Island Wind Sock covers the dedication covers from the Idlewild Airport, now the John F. Kennedy Airport. Dr. Price and the editor continue with their multi-part series on Long Island Post Offices . Other articles roundout this issue.

Your editor seeks the assistance of a contributing editor to take responsibility for a regular column dealing with Modern or 20th Century Long Island postal history covering the period from 1900 to the present. Please write to your editor if you are interested in contributing to your journal as the contributing editor for Modern L.I. Postal History.

It is my opinion that the Long Island Postal Historian should be the repository for all articles and information dealing with all aspects of the rich postal history from the four counties on Long Island. I believe that reprinting articles dealing with Long Island postal history, as well as reprinting data from the National Archives and many other sources should be acceptable. This publication should be the "residence" or repository for everything that has to do with Long Island and its post offices, etc. Not everyone subscribes or has access to the many periodicals and magazines dealing with postal history. There are many specialized publications that at times print articles of interest to us. Original source material should be printed, even if not in article format. Therefore, I would like to reprint articles, etc., with permission from the authors and original publishers, of particular interest to our membership. What do you think? Let me know.

Philatelically yours,

SECRETARY'S REPORT &

MEMBERS CORRESPONDENCE



We will be reporting on the results of the membership renewals in the next issue. New members will be welcomed in that issue also.

To date, renewals have been good but there are a few stragglers. Hopefully, we will have everyone back. We are close to reaching 100 paid members. The Winter Issue of the LIPH will have a full Secretary's Report and a Treasurer's Report to bring everybody up to date as to the membership and finances of the LIPHS.

*****LIPHS*****

We continue to received welcomed letters and comments from various members. It appears that many of us are quite interested in MODERN Long Island postal history, judging from the newsclips and comments received. Postal history in the making is as enjoyable as early postal history, therefore we will try to have as a regular feature of the Historian, a column on L.I. postal history, in its broadest sense of the phrase, of the 20th Century. The delivery mechanisms and the postal network on Long Island is under realignment at this time. Various articles about what is happening at Hicksville and Smithtown have been received. We have noticed various new markings which denote the distributing post offices as LONG ISLAND, N.Y. Other new and interesting postal markings are now in use. We will be reporting on these in future issues.

Heard from member Robert Sklarz of Hicksville. He sent along a news clipping from the Sunday edition of the New York Times, June 14, 1987 featuring an article by Mara Kurtz entitled, "L.I.'s Picturesque Post Offices Link Past and Present". That article is reproduced in the following page, courtesy of The New York Times and Robert Sklarz.

Another article, this one sent in by member Arthur Fitzpatrick, appeared in the June 3, 1987 edition of the Suffolk Life. It is written by Jeff Sievers and deals with the Riverhead P.O. Annex on West Main Street. Apparently there are differing opinions as to that move. Thomas Gaynor, former LIPHS member and the communications officer for the regional post office at Hicksville, is cited as saying that "closing of the Riverhead annex is all but

L.I.'s Picturesque Post Offices Link Past and Present

By MARA KURTZ

SOME of the oldest and most charming post offices in the United States can still be found on Long Island. Situated in sleepy villages on the eastern end of Suffolk County, these post offices also serve as social gathering places.

Unlike their larger counterparts, these tiny branches do not offer home delivery service. Villagers must stop in each day to collect mail from individual post office boxes or from the general delivery counter, where all other business is conducted as well.

On the South Fork, the Sagaponack Post Office, founded in 1885, is on its original site on Sagg Road. It has always shared its building with a general store. The interior is lined with 387 post office boxes. Postmaster Hertha Klotz, who runs the service by herself, said, "Everyone I have met is very friendly, and really seems to enjoy their daily mail run."

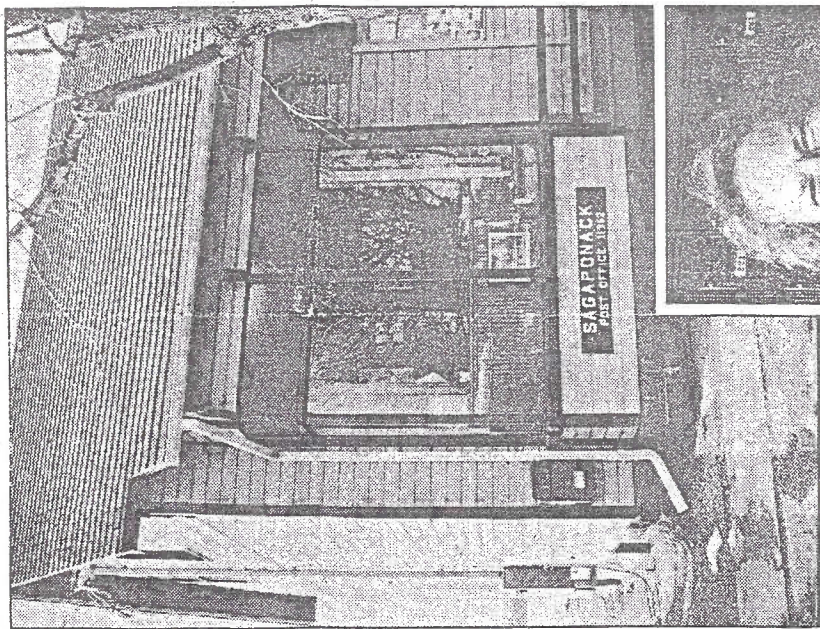
The post office in the small bay-side community of Great River is celebrating its 100th year. Postmaster Patricia Markosfeld, who has been employed by this branch in several capacities for 18 years, said, "Great River is one of the oldest continuously used post offices in the country."

Ms. Markosfeld is particularly proud of a map that hangs in her private office showing Great River in 1874 when it was called Youngsfort. There were 21 houses then. There are 2,200 residents in Great River today, and Ms. Markosfeld said she knows just about every one of them.

On the North Fork, the Aquabogue Post Office is on Route 25. Postmaster Mark Linnen remembers that the former post office building, situated on the main road adjacent to Down's General Store, had been run for many years by a husband-and-wife team who used to go to the train station in the morning to pick up sacks of mail tossed onto the railway platform from moving trains. These trains had "caching arms," which enabled clerks on board to pick up the mail sacks as the train sped by.

The post office was temporarily located at Ray McKee's fruit stand in the summer of 1961 while construction of the present building, opened in 1962, was being completed.

One of the tiniest post offices on Long Island is right next to a boatyard near Long Island Sound in the community of New Suffolk. It occupies a small office adjacent to a grocery store in a building that dates to the 1840's. Postmaster Gertrude Bowden, who has worked at this office for more than 20 years, said that there are 266 rented post office boxes in New Suffolk and that she knows the

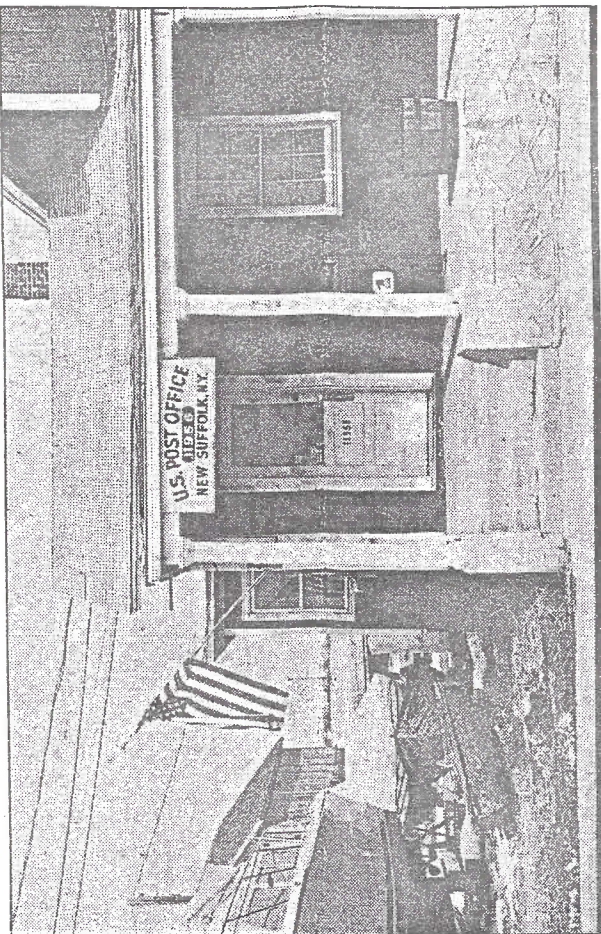


renter of every box.

The East Marion Post Office has the distinction of being the only war memorial post office in the United States, according to the Postmaster, Helene Garrett. It was built by the people of East Marion in 1949 and has a large monument on the front lawn showing the names of the residents who served in World War I. Inside, there are two bronze plaques displaying the names of those who served in World War II, Korea and Vietnam.

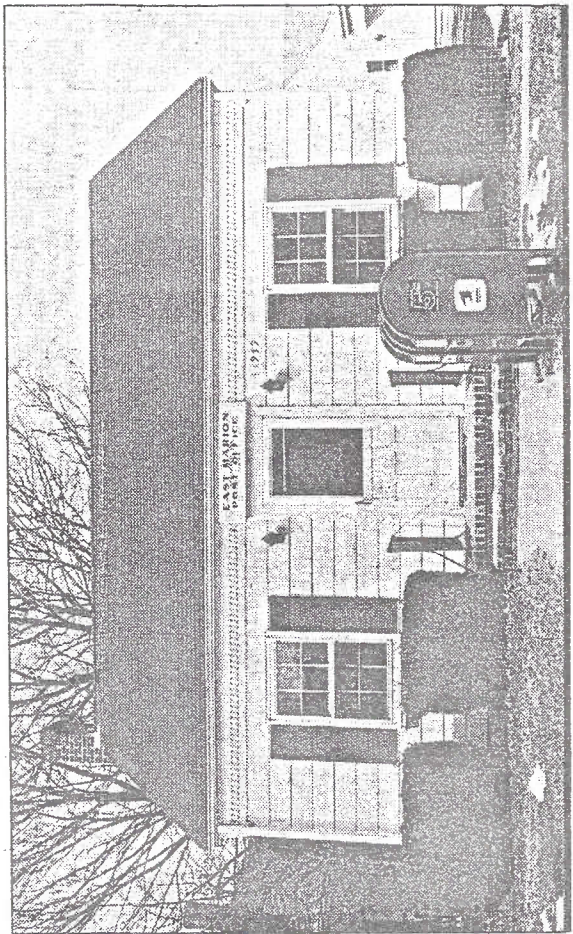
Ms. Garrett, who has been Postmaster for 15 years, said the War Memorial Association of East Marion still owns the building and is responsible for maintenance and landscaping work. "The post office is a source of great pride to all of the people in the town," she said.

The little white building that serves as the post office for Saltair on Fire Island looks more like a movie set. It does not even have the village's name on the post office sign over the front door. This office operates for only 90



MARA KURTZ

Among the oldest and most charming of the Island's post offices are: the Sagaponack Post Office, left, founded in 1885; the New Suffolk Post Office, above, which shares space with a grocery store; and the East Marion Post Office, the country's only war memorial post office. Inset, Hertha Klotz, postmaster of the Sagaponack Post Office.



days each year, from the third week of June through the second week of September.

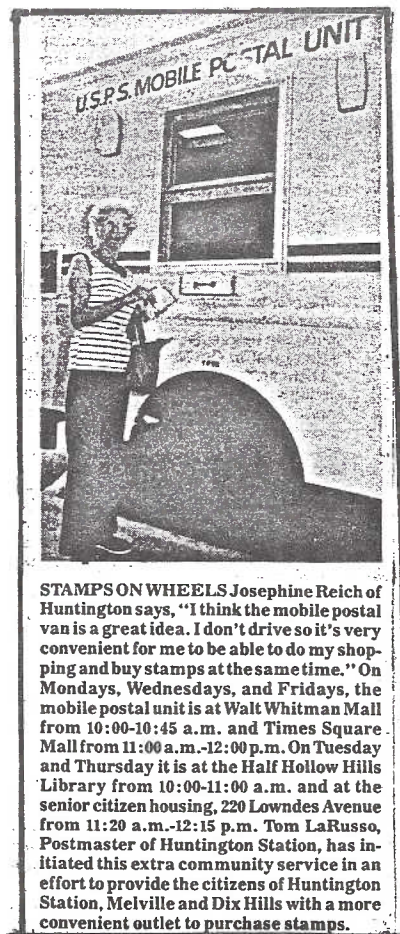
According to Michael McKean of the Bay Shore Post Office, all mail is routed through the Bay Shore office, and, by contract, is taken to and from Saltair by the Fire Island Ferries Company.

Mail service to and from Saltair is surprisingly efficient. A clerk at Saltair picks up incoming mail from the ferry dock each morning except Sunday and takes outgoing mail to the mainland-bound ferries twice a day.

certain." The closing is intended to improve mail service via automation. The move will affect about 70 postal workers who will be transferred other other Long Island post offices or to the new mid-Island regional mail processing facility now under construction on Route 110 in Melville. We cite the article as follows: "Until 1981, Gaynor said, workers at the Riverhead annex manually sorted both incoming and outgoing mail for the 119 zip code area which includes eastern Brookhaven and the five East End towns. Today, the annex is used to sort only outgoing mail, which is still being done by hand. Plans call for all mail from the 119 zip area to be sorted at the new Melville facility using exotic equipment as optical readers and laser equipment..." Automatic sorting equipment can process up to 30,000 pieces of mail an hour while only about 800 can be processed manually. "According to both union and postal officials, once the change is accomplished, a letter mailed from Southampton to Riverhead for example, would be routed to Melville for sorting before returning to the East End."

The above article brings to mind how in the 19th and early 20th century mail from the East End often was sent to New York City or Jamaica for processing and the sent back to the East End to the receiving post office. Backstamps denoting transit and handling of mail can often tell the story of why a letter from Sag Harbor to Riverhead has a N.Y. Transit backstamp. Mail is delivered via the established and official postal routes, which at times seem to be inefficient.

Member Carl Baker sent along a news clipping from the Huntington Long Islander newspaper which appeared in the July 16, 1987 edition of that weekly tabloid. It is reproduced here.



STAMPS ON WHEELS Josephine Reich of Huntington says, "I think the mobile postal van is a great idea. I don't drive so it's very convenient for me to be able to do my shopping and buy stamps at the same time." On Mondays, Wednesdays, and Fridays, the mobile postal unit is at Walt Whitman Mall from 10:00-10:45 a.m. and Times Square Mall from 11:00 a.m.-12:00 p.m. On Tuesday and Thursday it is at the Half Hollow Hills Library from 10:00-11:00 a.m. and at the senior citizen housing, 220 Lowndes Avenue from 11:20 a.m.-12:15 p.m. Tom LaRusso, Postmaster of Huntington Station, has initiated this extra community service in an effort to provide the citizens of Huntington Station, Melville and Dix Hills with a more convenient outlet to purchase stamps.

Member Mitsi Caputo of the Huntington Historical Society sent along a newsclip from a 1927 edition of the Brooklyn Daily Eagle. Two articles in it are of interest, one dealing with early stages and mail delivery on Long Island. The other one dealt with very early L.I. post offices.

We want to exhort the membership to send us all articles dealing with L.I. post offices, from current newspapers and from past editions. To those who are doing research on local history and their town, please remember us when reading through old newspapers and microfilms. We can use the information to further advance the knowledge base of Long Island postal history. The Postal Historian is and should be the repository for anything dealing with the postal history of the Island, from pre-Revolution days through today.

*****LIPHS*****

The Stamp Collector magazine, in its issue of July 25, 1987, highlighted Long Island postal history via an article by Ken Wood entitled "Official Status - Garden City flights carried mail with USPOD sanction". That article was written under the Philately & Flight/Chapter 40 section of the Stamp Collector. Ken Wood, its author, is a well known philatelic writer and author of a number of books, including The Encyclopedia of Philately. If you do not get the magazine, you may find a copy in your local library.

*****LIPHS*****

As reported in the Summer Issue of the Postal Historian (Whole No. 21), member Brad Arch is compiling a list of all Long Island covers bearing the postage stamps issued in 1869. He is doing this not only for Long Island, but for New Jersey, Staten Island, Block Island, Marthas Vineyard and Nantucket also. Please support his worthwhile efforts for postal history in general and for Long Island postal history in particular by reporting your covers to him. His letter requesting your help follows on the next page.

*****LIPHS*****

Brad Arch
144 Hamilton Ave
Clifton NJ 07011

Dear Friend,

In my continuing efforts to record via statistics and illustrations all of the 1869 Issue covers as used from New Jersey, and the off-shore island of New York, Rhode Island and Massachusetts, I would greatly appreciate your cooperation in providing to me clear high-contrast Xerox's of any covers that may at present be in your collection especially the higher denominations, but also to include any 1¢, 2¢ & 3¢ covers. Provided that sufficient response is received, the information will be provided to the appropriate State Postal History Society for publication in their Journal, as an article or survey, with due credit being provided to all contributors. Belowe please find my preliminary listing of known/recorded covers of the 6¢ and higher values, if you can provide information on additional listings, that would be most greatly appreciated.

NEW JERSEY - Please send Xerox's of ALL Covers

NEW YORK (Staten Island [Richmond County])

6¢	New Brighton NY - Yorkshire GB	04/13/70
10¢	Rossville NY - Hanover, Germany	04/05/70
12¢	Stapleton NY - Queenstown, Ireland	10/22/69

NEW YORK (Long Island [Kings, Queens, Nassau & Suffolk Counties])

6¢	Brooklyn NY - Cambridge, Nova Scotia	01/07/7?
6¢	Hempstead NY - London GB	07/01/71
6¢&3¢BN	Riverhead NY - Stoneybrook NY	??/??/7?
6¢&12¢	Williamsburgh NY - Cornwall CT	xx/30/69
10¢	Brooklyn NY - Germany	11/30/69
10¢	Brooklyn NY - Leitmar, Prussia	12/06/69
10¢&10¢&2¢	Brooklyn NY - Callao, Peru	04/18/70
10¢	Brooklyn NY - India	04/30/77
10¢&12¢	Southampton NY - Chile	02/28/70
10¢&12¢	Southampton NY - Chile	02/28/70
10¢&12¢BN	Southampton NY - Peru	??/??/??
10¢	Williamsburgh NY - Germany	03/08/70
10¢	Williamsburgh NY - Germany	04/30/70
10¢	Williamsburgh NY - Germany	05/21/70
12¢	Brooklyn NY - Great Britain	11/08/69
12¢	Brooklyn NY - Switzerland	03/22/70
12¢	Brooklyn NY - Canada	10/12/70
12¢&3¢	Williamsburgh NY - Switzerland	06/28/69
24¢Re-Issue & 1¢BN	Brooklyn NY - Hanover, Germany	06/13/81

RHODE ISLAND (Block Island [Newport County])

New Shoreham

MASSACHUSETTS (Marthas Vineyard & Nantucket)

3¢ & 4x30¢&10¢ 1861 & 3¢Envelope	Holmes Hole Mass -	
	- Tumhez, Peru	08/19/69
6¢	Edgartown Mass - Liverpool GB	02/28/70
6¢	Edgartown Mass - Liverpool GB	04/05/70
10¢	Holmes Hole Mass - Bermuda	??/18/??
12¢	Edgartown Mass - Liverpool GB	01/04/70
12¢&10¢BN	Holmes Hole Mass - Tumbez, Peru	08/29/70

Many thanks for your kind and prompt response to this inquiry,

Brad

LONG ISLAND AND THE UNITED NATIONS

By Carl F. Baker

Japan had not yet been defeated in World War II, when 50 nations met in San Francisco from April 25 to June 26, 1945 to draft the Charter of the United Nations as an International organization for world peace and security. On October 24th 51 nations would sign the Charter bringing into existence the United Nations with the United States, Great Britain, France, the Soviet Union, and China as the Security Council and all other nations forming the General Assembly.

Beginning January 10, 1946 the first session of the General Assembly would be held in London, and on February 14th the Assembly voted to have their permanent headquarters in the United States. A deadlock over exactly where in the United States that site should be was broken when John D. Rockefeller Jr. offered to donate 8 1/2 million dollars to buy 18 acres of land in Manhattan should the City also donate some additional acreage. With the UN's acceptance of this offer on December 14, 1946, this block of land, extending from 42nd St. to 48th St., and lying between First Avenue and the East River, would become International Territory as of April 13, 1947.

The U.S. Congress in the meantime also agreed to loan 65 million dollars, interest free, for the construction of three main buildings needed by the UN for the General Assembly, the Secretariat and for Conferences. However, since approximately five years would be required for construction of these permanent headquarter buildings, temporary locations throughout the City and nearby localities were utilized. The Security Council's first quarters were in a gymnasium on the Hunter College Campus in the Bronx. A Pitney-Bowes postage meter # 113436 was first used here on March 25, 1946. (FIGURE 1) The design bore a UN emblem and a regular US dater having a "New York, N.Y." as its town mark. This emblem had been designed by the USPO Department of Special Services and had been adopted earlier at the San Francisco Conference. Postmaster Albert Goldman of New York City attended the opening day ceremony, since at that time all mail would be processed through the US Post Office in the City. In addition US postage stamps or postage meters would be required.

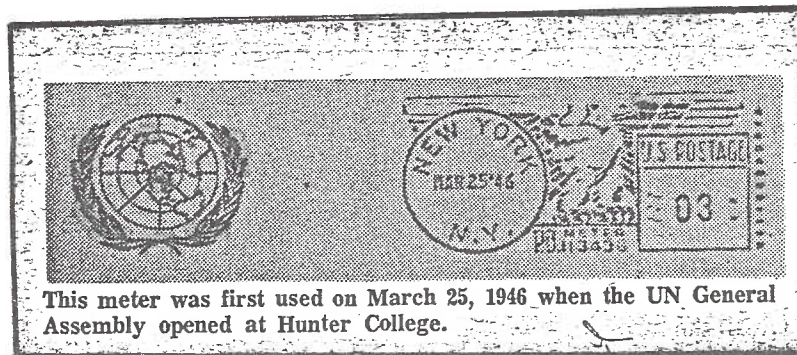


FIGURE 1 - A newspaper clipping showing the first postage meter marking used by the United Nations.

On April 11, 1946 the City offered the use of the City Building remaining at the former World's Fair site in Flushing Meadow Park and upon its acceptance the UN's General Assembly would open there on October 23, 1946. Assemblies also would be held there in 1947, 1949 and 1950. During these Assemblies a branch of the US Post Office would be open mainly for the use of the delegates and others connected with the UN. Shown on FIGURE 2 below is a clipping of a cover shown in an article in STAMPS, of July 22, 1978 entitled "U.N. Postal History" by Robinson. The cachet shows the General Assembly as being in Flushing and the Postmaster as being from Flushing, but on this cover the Lake Success postmark and meter was used as required for an official cover.



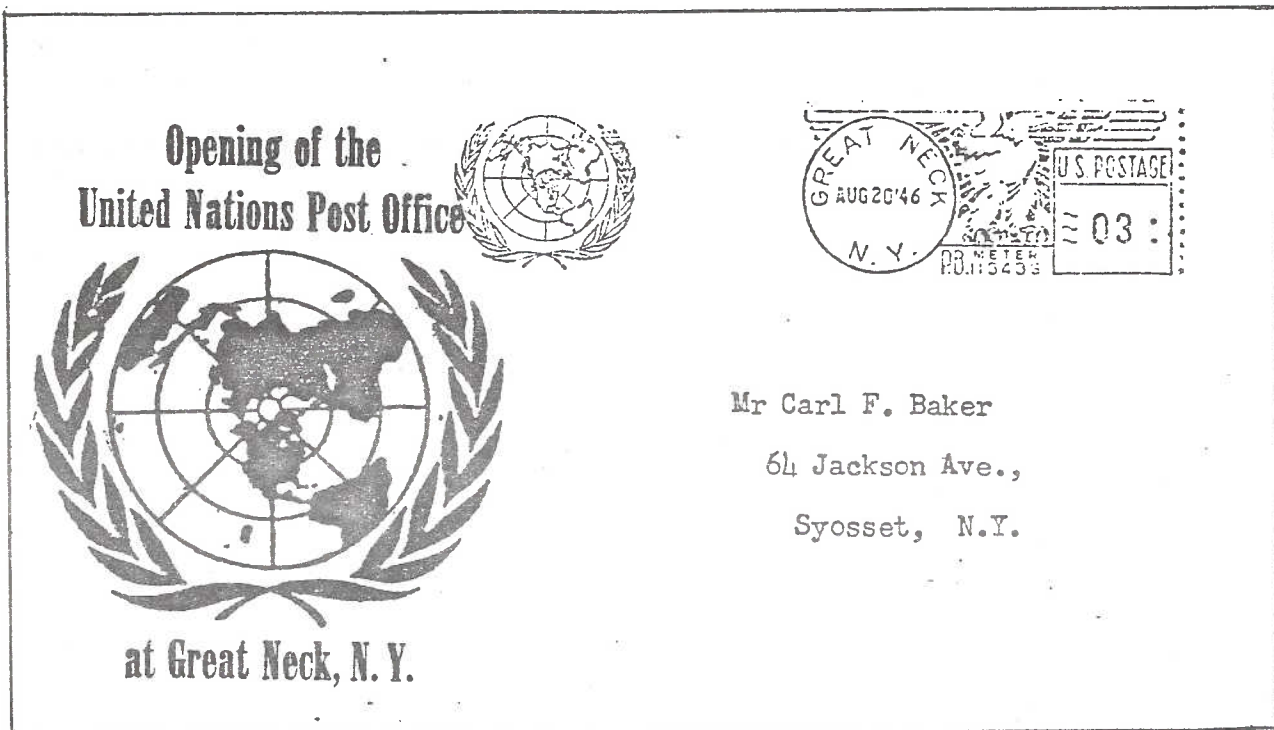
FIGURE 2 - Copy of an official cover prepared to commemorate the First General Assembly at Flushing, N.Y. October 23, 1946. Originally illustrated in STAMPS on July 22, 1978 issue.

In an article "Scarse and Rare United Nations Items" by William B. Deerson, appearing in LINN's at a date not recorded by the author, it is noted that "The opening day of the General Assembly in Flushing, N.Y. took place October 23, 1946. Cacheted FDC exist with "FLUSHING, N.Y." cancellation impression on U.S. stamps". No illustration was shown of that First Day Cover. As will be noted in the paragraphs for Lake Success operations, to follow, ALL official mail would be dispatched from Lake Success including that brought in from other units. Non-official mail, it would appear, could receive the Flushing postmark.

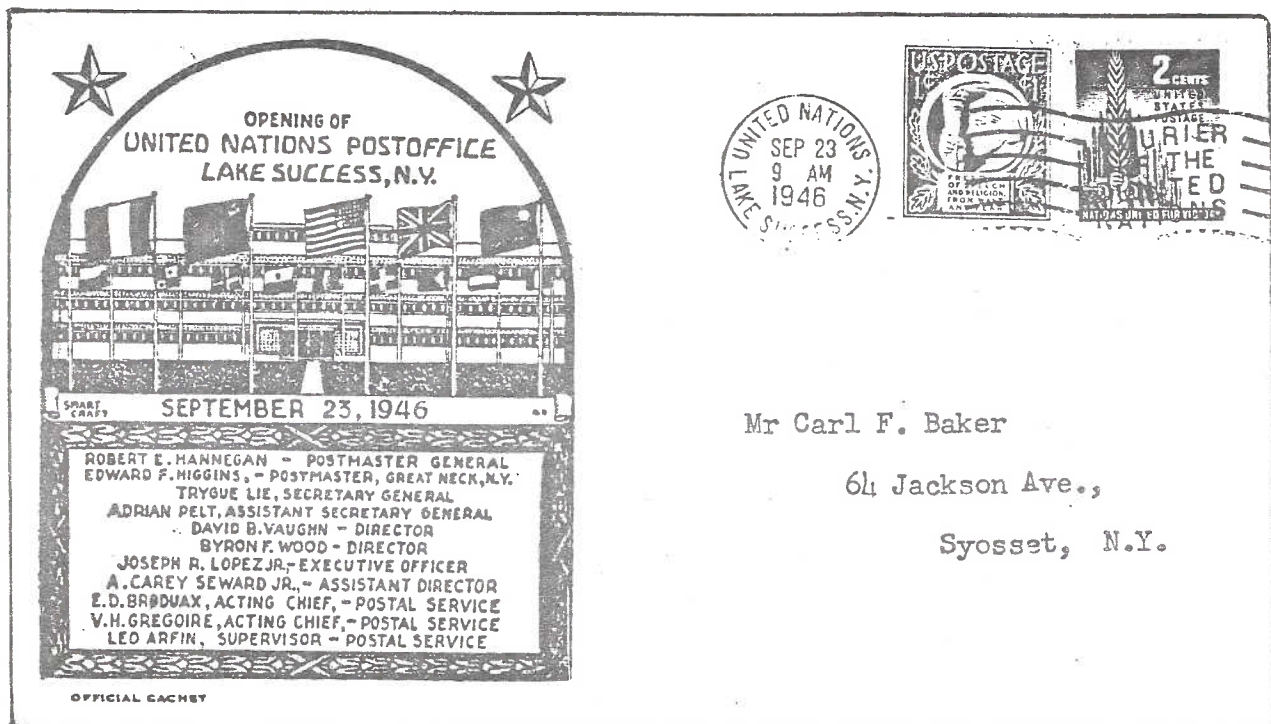
Since the Flushing Meadow site does lie within the boundaries of New York City, some residents of that City may dispute this, but these four Assemblies took place geographically on Long Island. They would not, of course, be the first UN activity on Long Island, for in the meantime the UN had made arrangements to rent a great part of the Sperry Gyroscope Plant in Lake Success for the Secretariat. The last dispatch from Hunter College was on August 15, 1946 with the move to Lake Success beginning on August 16th through August 19th. The UN's working headquarters would begin operations there on the 20th. It is interesting to learn that the Mayor of that Incorporated Village did hold an informal referendum on the admission of the UN. "Approval" was granted by a vote of 102 to 72. In a gesture of good will James J. O'Neill, a resident as well as president of the Lincoln Warehouse Corp., moved the UN facilities from Hunter College to Lake Success for a token \$1.00.

With the UN's move to Lake Success all its mail would be processed through the Great Neck Post Office for a very brief period, August 20th to September 22nd. The Great Neck Postmaster was Edward F. Higgins. The Postage Meter used at Hunter College, # 113436, would have its town mark changed from "New York, N.Y." to "Great Neck, N.Y." On August 20th only the cancellation would read "OPENING OF THE UN POST OFFICE, GREAT NECK, L.I., AUGUST 20, 1946" (FIGURE 3). At this time the account balance for Business-Reply Paid envelopes (Permit No. 546) was transferred to the Great Neck Post Office. A post office box, #686, was also obtained for use of staff members and all personal mail.

FIGURE 3 - Cover commemorating the opening of the United Nations at Great Neck on August 20, 1946.



At the request of the UN, a Branch Office of the Great Neck Post Office was opened at the Sperry Plant on September 23, 1946. A special cancellation would be used reading, "OPENING OF UN POST OFFICE, LAKE SUCCESS, SEPTEMBER 23, 1946". See FIGURE 4 below for an example of this cover.



As of September 23rd the Lake Success Branch Post Office would handle all UN mail and the town postmark would be changed to reflect this. PB postage meter # 113436, previously used at Hunter College and Great Neck would be transferred to Lake Success, using the same emblem, a world map between olive branches. After opening day the cancel would read, "UNITED NATIONS, LAKE SUCCESS, N.Y." plus a slogan, "COURIER OF THE UNITED NATIONS". This slogan would be used on both meter and stamped mail. This Lake Success P.O. would have a receiving and dispatching unit and would handle registry, money orders and International Reply Coupons. All official mail was dispatched from Lake Success including mail brought in from other units by shuttle bus.

Two UN cancellations were put into use at Lake Success: (1) "Courier of the United Nations" surrounded by six wavy lines; (2) a Circular dater, "United Nations, Lake Success, N.Y. Both were designed by Carl Brodnax, UN First Chief of Communications and Records, serving as Acting Postmaster prior to the arrival of the first official Postal Chief, Bertil Renborg, in 1947.

A photo postcard of the UN Headquarters at Lake Success is shown below. (FIGURE 5)

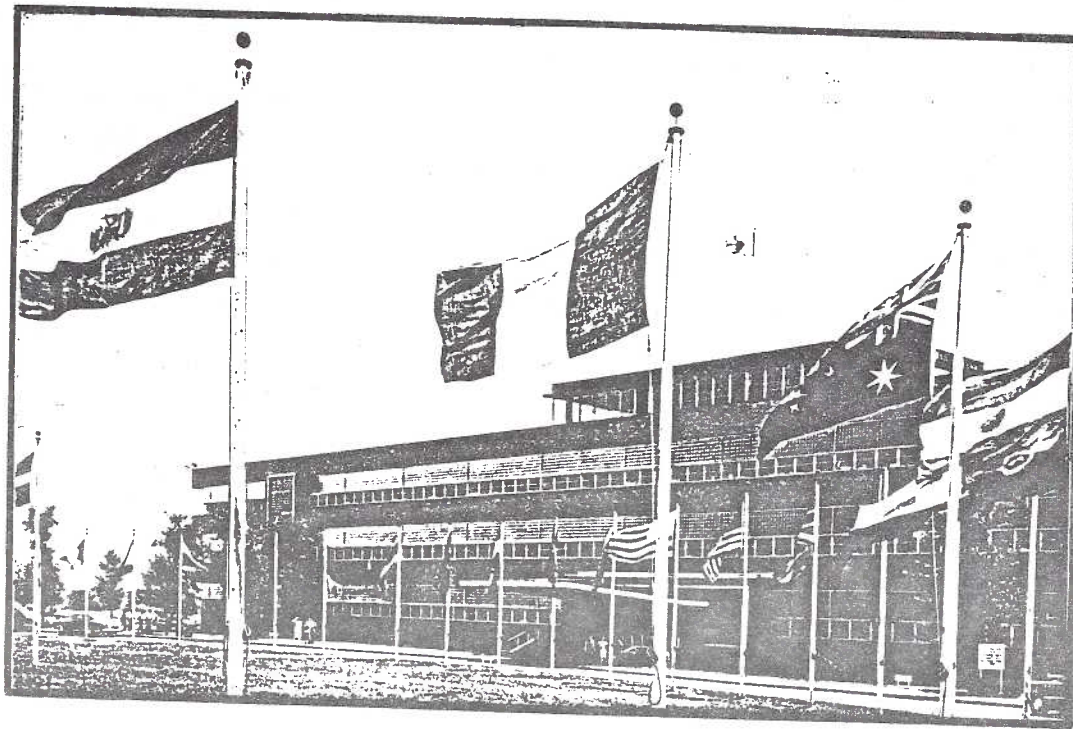


FIGURE 5 - UN Headquarters, Lake Success, New York

A number of additional postage meters known to have been used at Lake Success were:

PB 115515	(October 30, 1946)
PB 116728	(November 14, 1947)
PB 126118	(December 17, 1947)
PB 150815	(February 1, 1948)
PB 138421	(January 2, 1949)
PB 180705	(December 14, 1950)

On June 26, 1947 UN Secretary-General Trygve Lie and US Secretary of State George C. Marshall signed an agreement at the Lake Success Headquarters spelling out in nine articles the privileges and protection granted to the UN organization by the United States.

A number of UN offices continued to operate in New York City. The UN Headquarters Planning Offices remained at the RKO Building in Rockefeller Center from January 20, 1947 due to its closeness to the construction site. A number of other committees also remained at this "Old Manhattan Office", whose address was changed to "United Nations, New York" as of August 18, 1950.

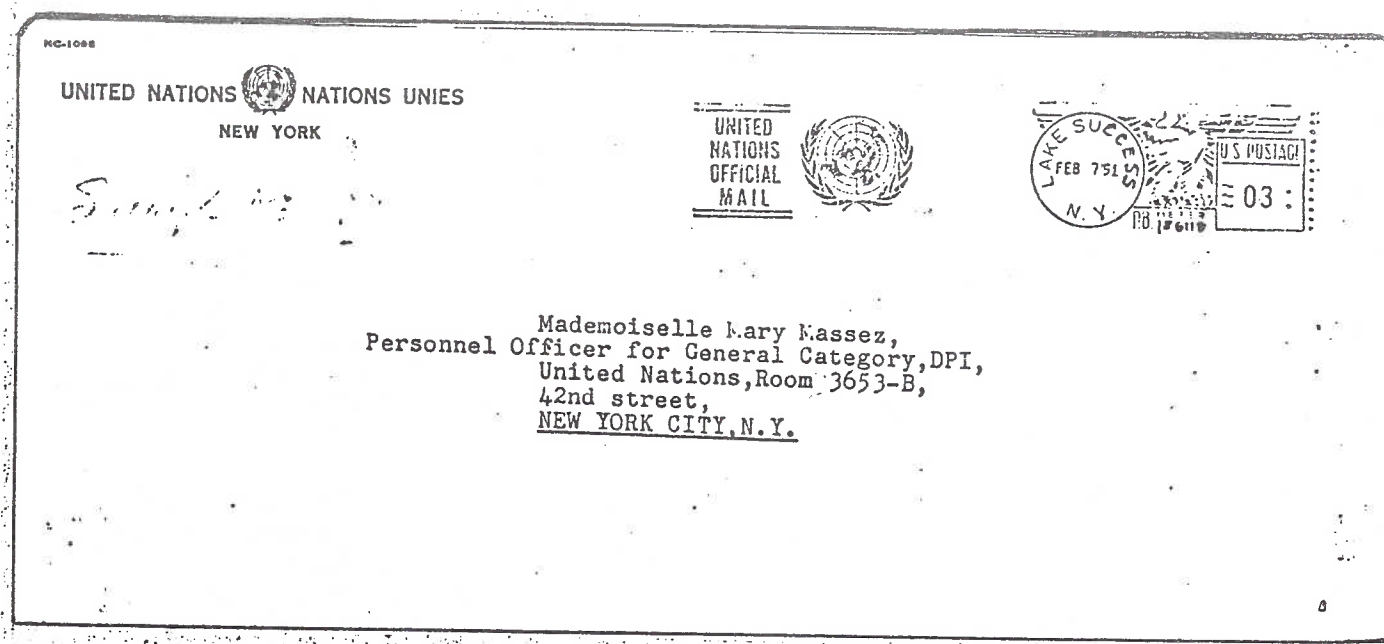
The UN's Office of Public Information had its base of operations at the US Signal Corps Photographic Center in Long Island City. The author has no information available as to dates, but it did use a postage meter considered one of the rarest of the postage meter forerunners. Once again, a New York City UN Office must be included with the UN's Long Island operations.

With the completion of the permanent Headquarters Secretariat Building in New York City by the summer of 1950, a number of other offices would begin the move to Manhattan early in August with the first mailing there on August 18th. By the end of the year the entire Secretariat had moved to the new permanent Headquarters with the exception of a small staff still needed at Lake Success.

On December 7, 1950 the Postmaster at Great Neck was notified to terminate mail deliveries after the last delivery on December 15, 1950 (bear in mind that the Lake Success P.O. had been a branch officially of the Great Neck Post Office). P.O. Box 686 for personal mail would also be closed and all such mail forwarded to P.O. Box 20 at the Grand Central Station Post Office in New York City. A branch of the US Post Office would be opened at the new UN Headquarters in Manhattan on January 3, 1951.

The lease at Lake Success was not due to end until May 31, 1951. The small staff left behind following the move of the Secretariat to Manhattan would explain the two covers illustrated next, showing that the Lake Success postage meter # 126118 would continue in use for some time. Undoubtedly such mail was forwarded to the New York UN Branch P.O. by shuttle bus, similar to the policy of forwarding all official UN mail to Lake Success previously. FIGURE 6 in the next page shows a reduced copy of a

legal size UN official envelope used as late as February 7, 1951 from Lake Success, N.Y. The town mark and meter number have been strengthen for better clarity.



On the above cover a possible owner had made an attempt to eradicate a manuscript ink notation, "Sample N365 (?)" on the left. Whatever the marking may have referred to, it's unlikely that it was a postal marking.

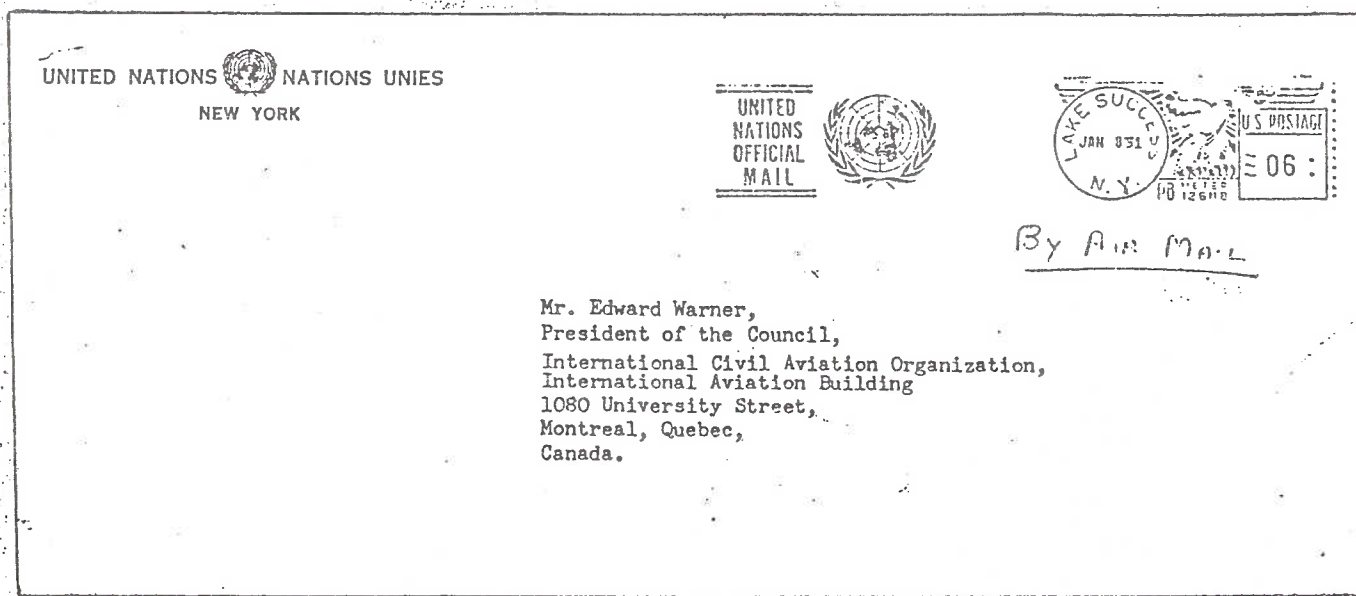


FIGURE 7 - Another Lake Success cover used in 1951 addressed to Canada.

PB meter machines were used at the new UN Headquarters as early as August 18, 1950, when the meter at the old Manhattan Office, #108314, was transferred. PB # 116728 was transferred from Lake Success on October 1, 1950 and another Lake Success meter # 138421 was transferred on December 1, 1950.

When the US Branch Post Office was opened in the United Nations Headquarters, United States stamps and postage meters were still required. On March 28, 1951 the United Nations Postal Administration (UNPA) was established per agreement between the United Nations Organization and the United States. On the following day the post office branch was officially turned over to the UN Postal Administration. Upon the granting of permission to issue its own stamps, the UN's first issue would come out on October 24, 1951. Per agreement the UNPA would reimburse the US for all stamps actually used for mailing. Sales to collectors would be excluded from this requirement. UN stamps were valid only in the UN Post Office in New York City, though on a number of special occasions exceptions would be authorized. A second UN Post Office was opened in Geneva, Switzerland, in 1968 under the same provisions as in the United States.

With the final transfer of all UN operations to their permanent Headquarters in Manhattan, "Long Island and The United Nations" concludes. Obviously, the history of The United Nations Organization is far more comprehensive than reported here. Our interest lies mainly in the role that Long Island had played for a little more than four years and certainly in the fascinating postal history that resulted.

Undoubtedly, additional information on this phase of the UN's early history exists and in the interest of completeness is welcomed. Hopefully no errors have been made in this report, but for the sake of accuracy these, too, should be noted. Please write to the author with your comments at the following address: Carl F. Baker, 140 Lewis Road, Northport, N.Y. 11768.

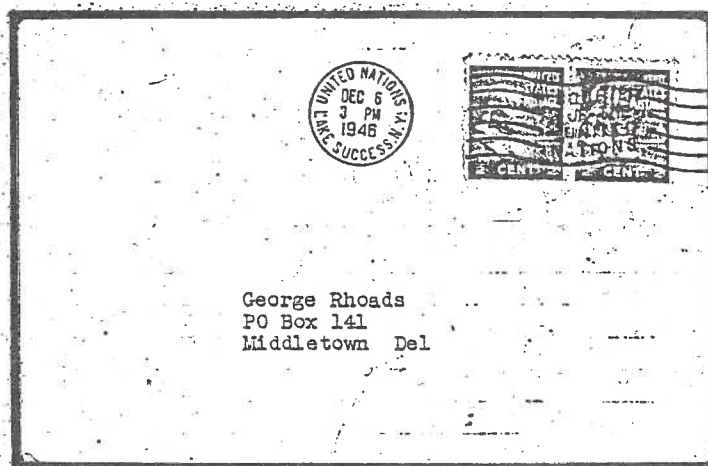


FIGURE 8 - A reduced copy of a postcard announcing a Dec. 10, 1946 meeting of the West Chester, Pa. Stamp Club, mailed on Dec. 6, 1946 from Lake Success, N.Y.

REFERERNCES

"United Nations Commentary" by H.E. Conway, LINN'S (May 6, 1968)

"10 Years Preceding UNPA Produce Interesting Collection" by Paul J. Kavits, LINN'S (October 4, 1971).

"Fun with Meters - United Nations Makes Home in New York" by Homer H. Hemenway, LINN'S (November 21, 1977).

"U.N. Postal History - The Secretariat at Lake Success, 20 August 1946/31 December 1950" by Norris G. Robinson, (UN Staff Member), STAMPS (July 22, 1978).

"UN Postal History - Permanent Headquarters Built in New York, Secretariat Moved from Lake Success" by Norris G. Robinson, (UN Staff Member), STAMPS (April 4, 1981).

"Scarce and Rare United Nations Items" by William B. Deerson, LINN'S (Date not recorded).

"Study of Cancels on UN Stamps" by Edward H. Ivanian, LINN'S (Date not recorded).

*****0*****

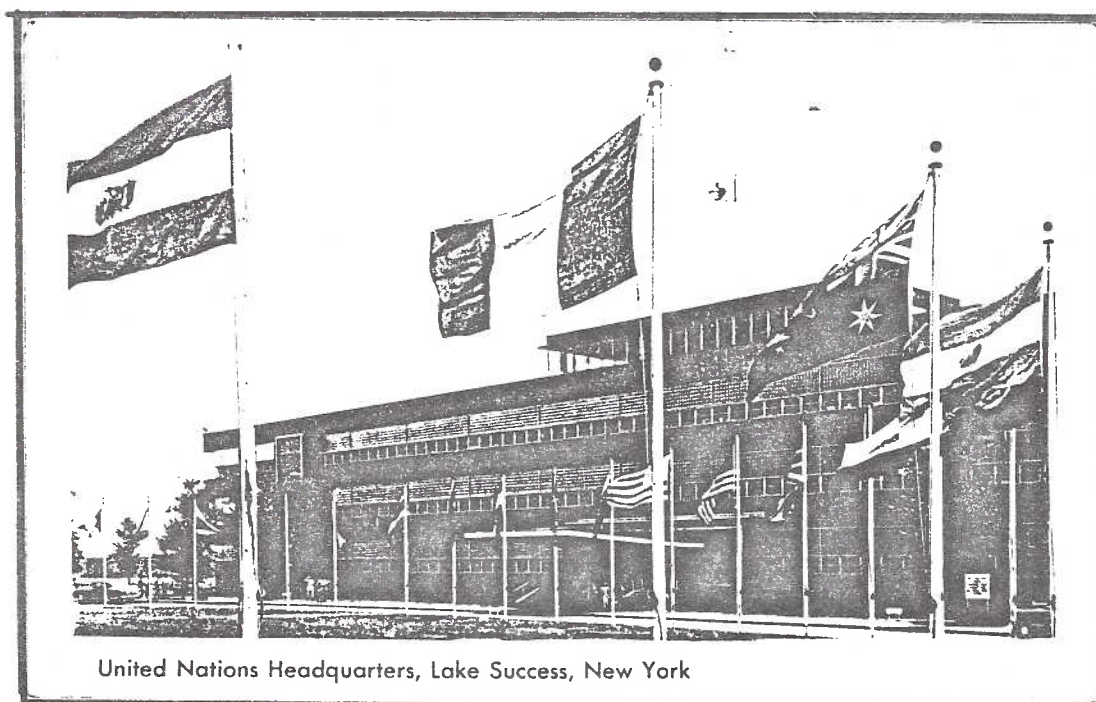


FIGURE 8 - A postcard of the Lake Success Headquarters used in February 20, 1950

LONG ISLAND WIND SOCK
Idlewild Airport Dedication
By Robert S. Miller

It will probably come as a surprise to many to learn that the first airport to serve New York City, the largest in the United States was Hadley Field in New Jersey. At the time only mail was carried and it was cancelled "Air Mail Field New York". On September 8, 1930 Hadley Field was discontinued and airlines serving New York City terminated at Newark Municipal Airport, also in New Jersey. The "Air Mail Field New York" cancellation continued to be used before a more suitable cancellation "Air Mail Field Newark, N.J." was used.

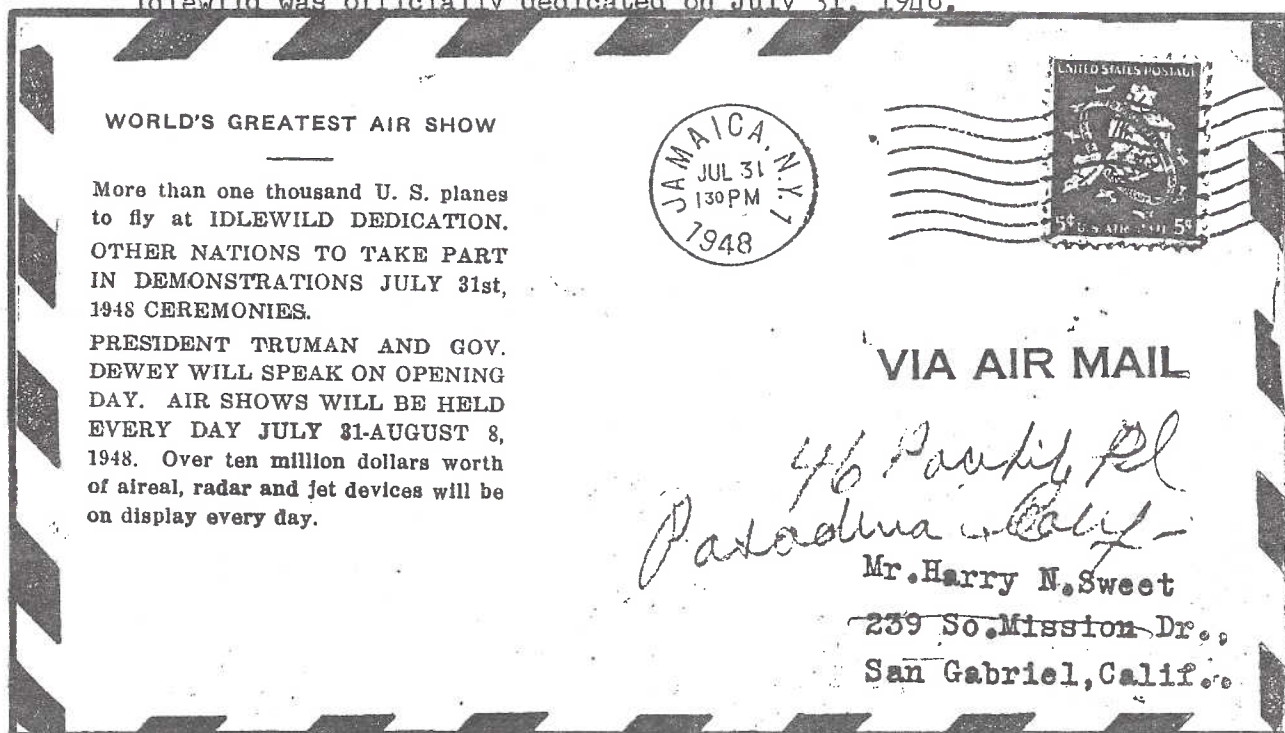
In 1927, George Wolpert, Publicity Director, Chamber of Commerce Rockaways proposed the building of a New York Municipal Airport where present day John F. Kennedy Airport is situated.

New York's first official airport was Floyd Bennett Field which was on one of the several sites proposed by Wolpert in his report. Situated at the end of Flatbush Avenue, an already heavily used artery which had a trolley line running along its length made the time necessary to reach the airport from New York City longer than it took to get to Newark Airport and as a result Floyd Bennett proved unsatisfactory.

New York International Airport was begun in 1942 on a site occupied by the Idlewild Golf Course and when completed it became known as Idlewild Airport. Sixty million dollars were spent to fill in the water and marshes of Jamaica Bay and on the runways and administration building. Originally planned as an eleven hundred acre airport - twice the size of La Guardia Field, it grew to forty nine hundred acres - nine times larger than La Guardia.

In the beginning and from personal recollections, a small cinder block building served as a terminal. After the passengers were checked in and their baggage weighed on a portable scale, the passenger manifest was typed on a card table, that had been transported in the trunk of a car from La Guardia in the airport parking lot. A far cry from the computerized check in of today.

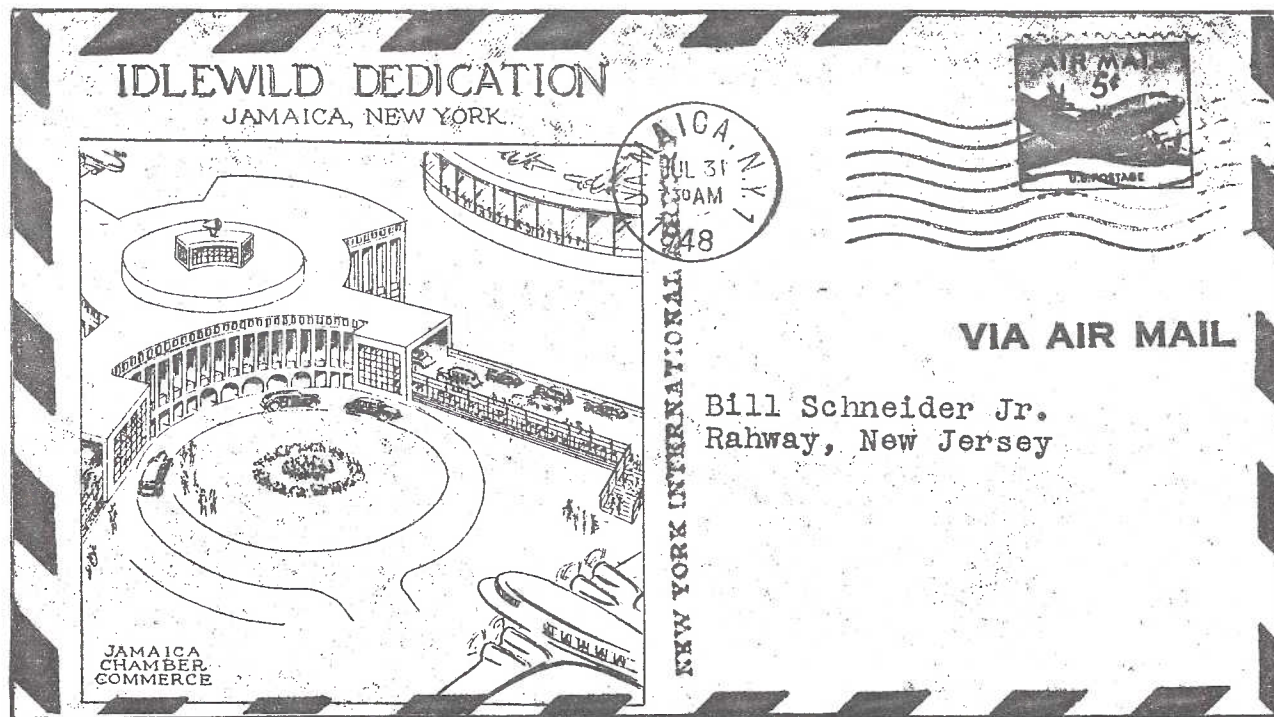
Idlewild was officially dedicated on July 31, 1948.



Jamaica Chamber of Commerce



Metropolitan Air Mail Cover Club
National Cachet Society



Jamaica Chamber Of Commerce

Washington-Idlewild.
Flown By The Kindness Of:
Col. F.W. Williams, USAF,
"Independence."

Harry Truman
President's Day

New York City's Golden Jubilee

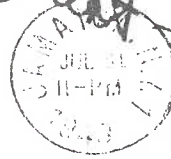
JULY 31, 1948

President

Harry S. Truman

Dedicates

New York International Airport.



-VIA AIR MAIL-

BILL SCHNEIDER, JR.

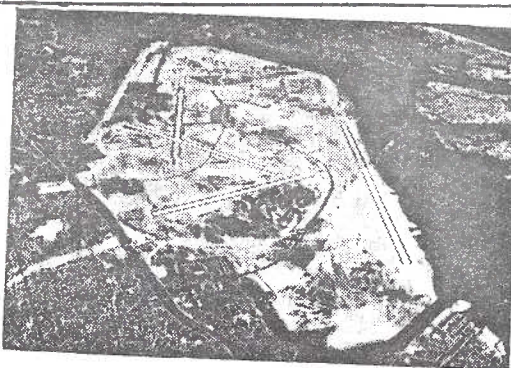
RAHWAY,

NEW JERSEY.

PRESIDENT'S DAY

signed by Harry S. Truman, President

DEDICATION
NEW YORK INTERNATIONAL AIRPORT



EARLE OVINGTON JUNIOR UNIT

JAMAICA, N. Y.

G. W. Rosenquest, Postmaster

WOODROW WILSON VOCATIONAL HIGH SCHOOL

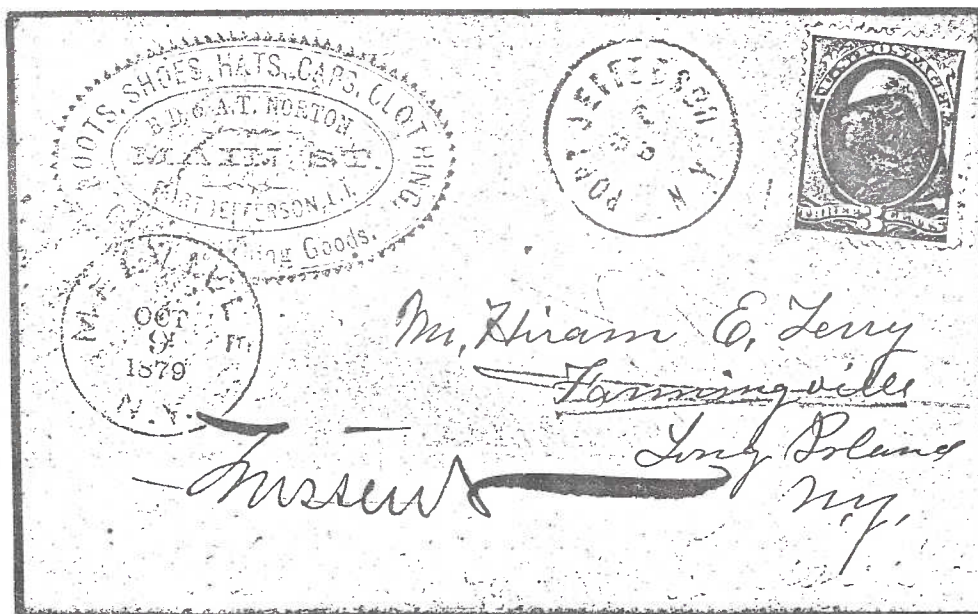


JACK KNIGHT AIR MAIL SOCIETY



Mrs. C. Byron Martin
468 Summit Ave,
Hagerstown
Maryland.

A MELVILLE P.O. MISSENT - A MYSTERY SOLVED
 By J. Fred Rodriguez



The cover shown above was acquired by the author in 1981. The Melville strike was the deciding factor for the purchase as I didn't have an example of a postmark from that post office. Melville is located in the town of Huntington, in Suffolk County. The area was originally known as Sweet Hollow and is located east of the West Hills area, south of Huntington Station, and west of the Half Hollow Hills. The southern part of Melville goes to the town line which separates Huntington from the Town of Babylon.

The post office at Melville was first established on August 26, 1852 under George H. Conklin, however it closed soon thereafter, on July 21, 1853. The post office was re-established on July 7, 1876 under postmaster Seneca Durland (another source spells his name Durand). On March 16, 1906 it was discontinued. The Huntington P.O. began to service the Melville area at that time. In 1966, Melville was re-established once again, but this time as a branch of the Huntington Station post office.

At the time this cover was acquired I didn't notice anything peculiar about it, but after careful review I couldn't understand why this cover ever got to Melville. It was mailed from Port Jefferson on October 6 receiving a black 28mm circle postmark at that post office. A three cent Banknote stamp was cancelled by an indistinct cork killer. The envelope is blue and it has a fancy saw-tooth oval corner card from B.D. & A.T. Norton, Main St., Port Jefferson, L.I. Boots, Shoes, Hats, Caps, Clothing, Gents Furnishing Goods. The cover was addressed to Mr. Hiram E. Terry at Farmingville, Long Island, N.Y. A good number of covers from the Terry correspondence can be found in the collections of our members. Some covers are addressed to Mr. Terry at Holtsville and at Terryville, L.I.

The cover then travelled west and received a New York City transit marking on the back, NEW YORK/OCT 7/930 PM/79 with a duplex 9-bar oval strike and the numeral five in a circle within the oval. On October 9th it was received at Melville receiving there a 30mm black year dated postmark. The Melville postmaster or the postal clerk evidently wrote "Missent" and forwarded the letter to Farmingville. However, there is no indication of receipt at Farmingville's nearest post office or if the forwarding charge of three cents was collected. Farmingville did not have a post office until 1950. The Holtsville P.O., established in 1860, was the nearest to Farmingville. That hamlet is located a few miles south of Port Jefferson, but this letter apparently got there the roundabout way. But, why Melville?

I found the answer to this riddle about two years ago while visiting with Richard Frajola in Connecticut. Richard showed me a number of rare post route maps of New York and Long Island in his reference collection. He was kind enough to give me photocopies of the Long Island section. While studying one of the maps I found the answer. The Melville post office was a temporary distributing or tributary office to Farmingdale, a small village located southwest at a distance of about five miles. The legend on the map identified the dotted line between Melville and Farmingdale as a temporary postal route. Undoubtedly, Farmingville was misread as Farmingdale and thus the peculiar routing of this cover.



APS REPRESENTATIVE REPORT

BRIAN LEVY

The American Philatelic Society Celebrated its 101st anniversary at STAMPSHOW 87 held at the Sheraton-Boston Hotel, August 20-23, 1987. My wife Joan and I took the opportunity to take a mini vacation as well as add some material to my Long Island collection. Boston has plenty of historic sights and great restaurants.

The first day at the show I volunteered to cover the APS Affiliates booth. With the help of the local Boston people, we fielded questions regarding the different societies and handed out membership forms. It was an excellent way to push our Long Island Society and to meet new philatelic friends. While at the booth, I met the librarian from the Cardinal Spellman Museum who has now entered the Historian in the 1988 competition for philatelic writing.

The APS invited the Affiliate Representatives to a fine luncheon on Saturday where we met Affiliate Chairman, Robert de Violine (Pacific '97). Common problems were discussed and several suggestions were presented to improve membership and lower costs. some of the ideas:

- A - Free membership for dealer if he sends our form to his customers with his mail.
- B - Use Bulk Mail for mailings.
- C - Have a separate dues mailing and note on Journal 'last issue' if expiring.
- D - Use the APS facilities such as mailing lists, and a free room at major shows for our meeting.

While each affiliate is different we all can learn from one another. Some of what was mentioned could not be used by LIPHS, but if one member joins our society or learn more about Postal History, we have been successful.

During November, The APS will publish the Affiliate Handbook, which will note all the LIPHS highlights along with membership information. Keith A. Wagner, Executive Director APS, stated in his meeting report, "we have evidence of a firm base of support for organized philately in the United States". May we grow with the APS and continue to learn from each other.

Long Island Post Offices - Part VIII - Another Sampling

By J. Fred Rodriguez & John M. Price, Jr.

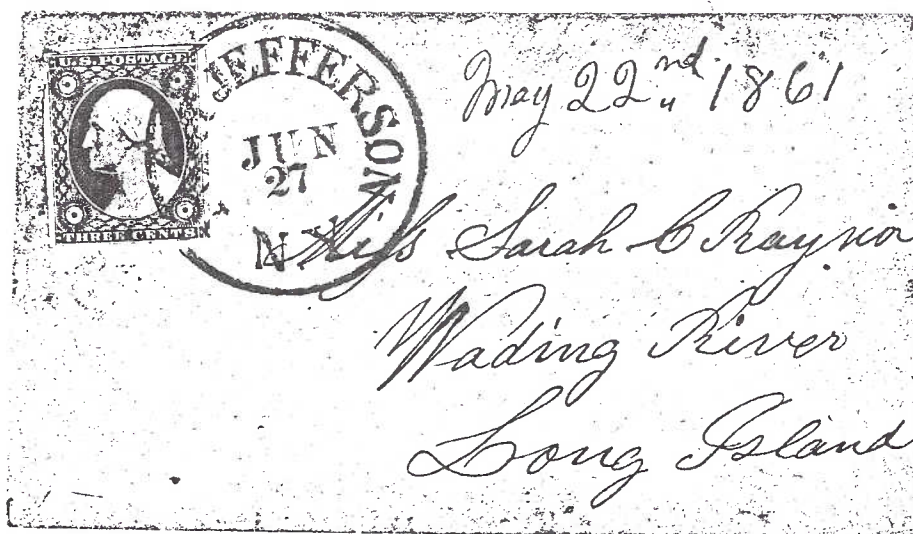
This is a continuation of our multi-part article depicting Long Island Post Offices on turn of the century post card views and other vintage photographs. These have been accompanied by nice covers illustrating a postmark used during a period in the history of the post office.

Our past offerings have included many post offices, eighty nine in all listed below. Some have been illustrated more than once showing different periods. Part VII appeared in the Winter 1985 issue of the Postal Historian, Whole No. 15. We now illustrate a few more from our collections.

We have shown, in the past seven installments, 89 post offices, listed in alphabetical order below, read horizontally. We have at least another 50 to show in future issues.

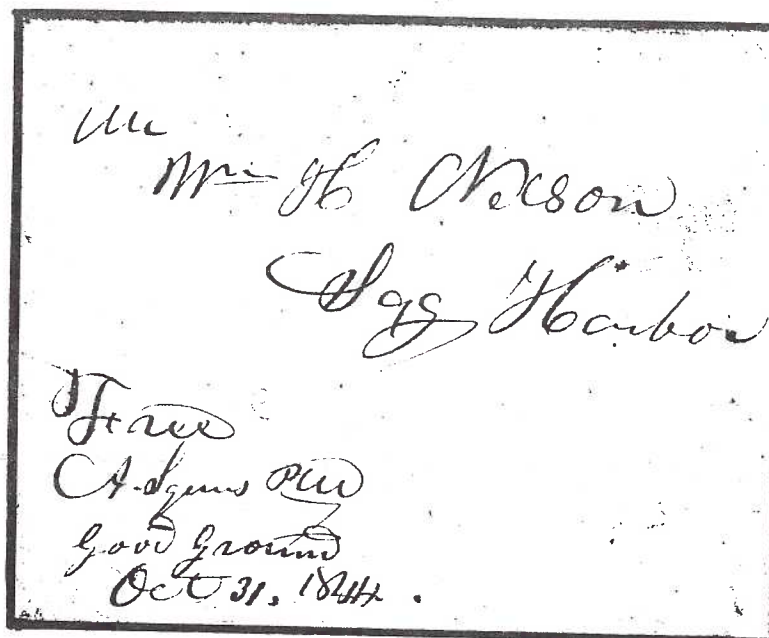
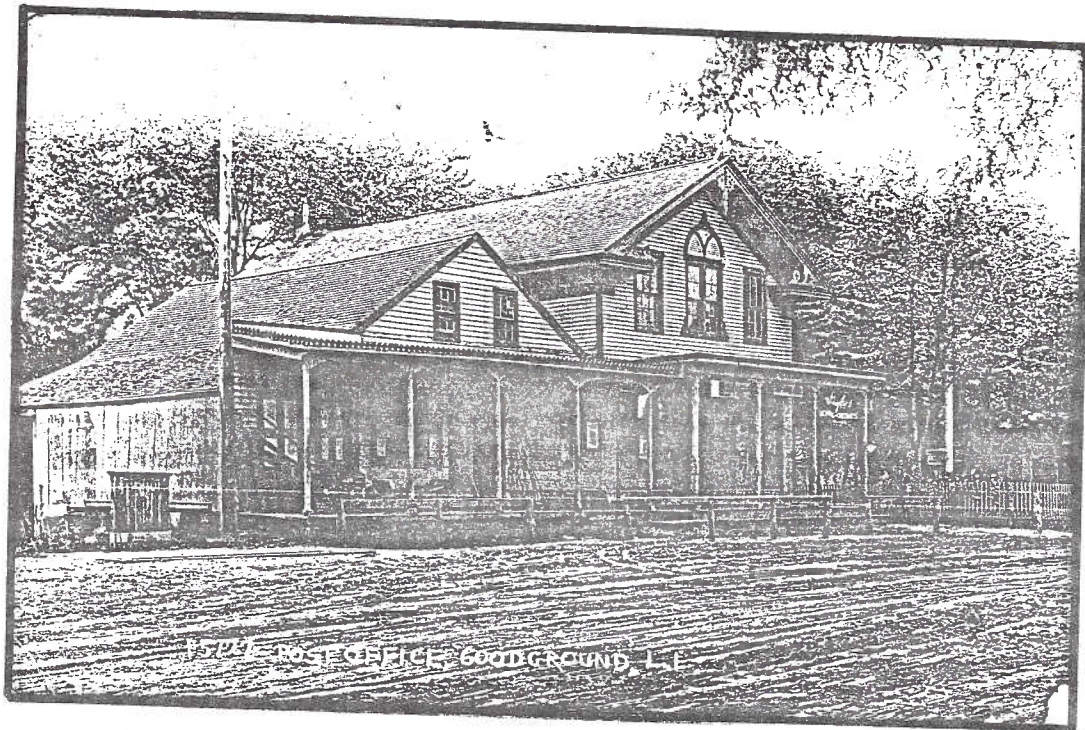
Amagansett	Astoria	Amityville
Babylon	Bayport	Bay Shore
Beixedon	Bellport	Bensonhurst
Blue Point	Brooklyn	Cedarhurst
Center Moriches	Centerport	Cold Spring Harbor
Commack	Coney Island	Copiague
Corona	Deer Park	East Marion
East Northport	East Patchogue	Eastport
East Rockaway	Fairground	Fair Harbor
Farmingdale	Far Rockaway	Fire Island
Fishers Island	Floral Park	Flushing
Fort Salonga	Freeport	Garden City
Glen Cove	Glen Head	Good Ground
Great Neck	Great River	Greenlawn
Halesite	Hempstead	Hicksville
Holbrook	Huntington	Huntington Station
Islip Terrace	Lawrence Station	Lindenhurst
Long Island City	Manhasset	Massapequa
Mattituck	Melville	Middle Island
Miller Place	Mount Sinai	New Hyde Park
Northport	Oakbeach	Oceanside
Old Westbury	Oyster Bay	Peconic
Point Lookout	Port Washington	Queens
Remsenburg	Richmond Hill	Roslyn
Sagaponack	Sag Harbor	Sea Cliff
Seaford	Shelter Island	Southold
Springfield	Upton	Wainscott
Westbury Station	West Gilgo Beach	West Sayville
Whitestone	Woodbury	Woodhaven
Wyandanch		

PORT JEFFERSON P.O., originally known as Drown Meadow, is shown on this 1905 Tuck post card showing the P.O. building at the far left, located on Jones Street near the harbor.



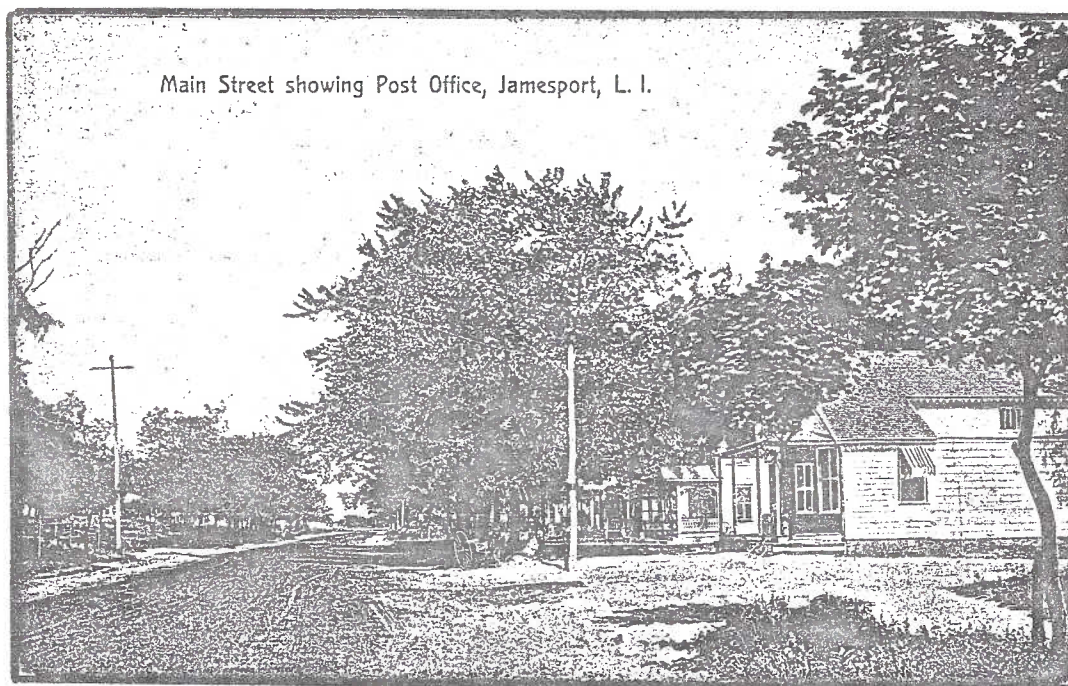
A deep red balloon postmark from PORT JEFFERSON used to Wading River. The enclosed letter is dated May 22, 1861 but it was mailed over one month later. A Scott's #11 stamp, used very late is tied by the bold postmark.

The P.O. at GOOD GROUND, now HAMPTON BAYS as shown on this early 1900's real photo post card.

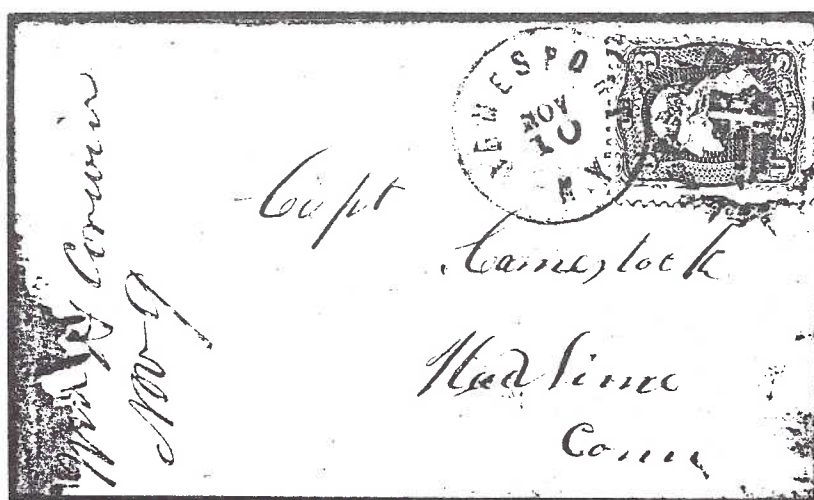


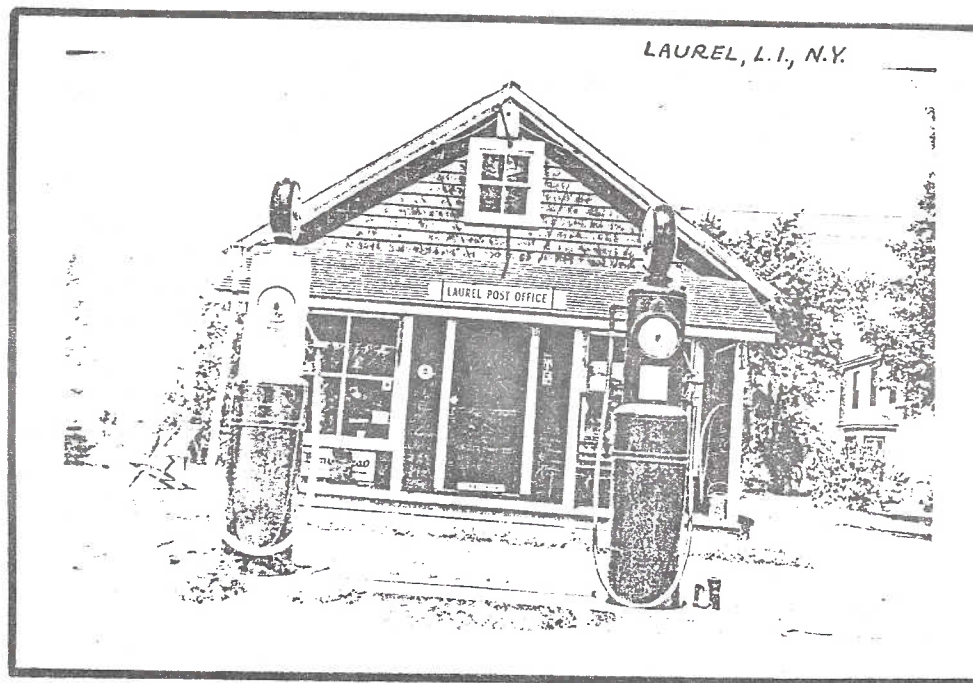
This post office was established under Alvin Squires on July 28, 1829. He remained in charge of the mails for 25 years, until 1854. An example of his free frank is shown on this 1844 stampless folded letter to Sag Harbor.

The JAMESPORT P.O. building on Main Street. This post office was established in 1842 under David Williamson as its postmaster.

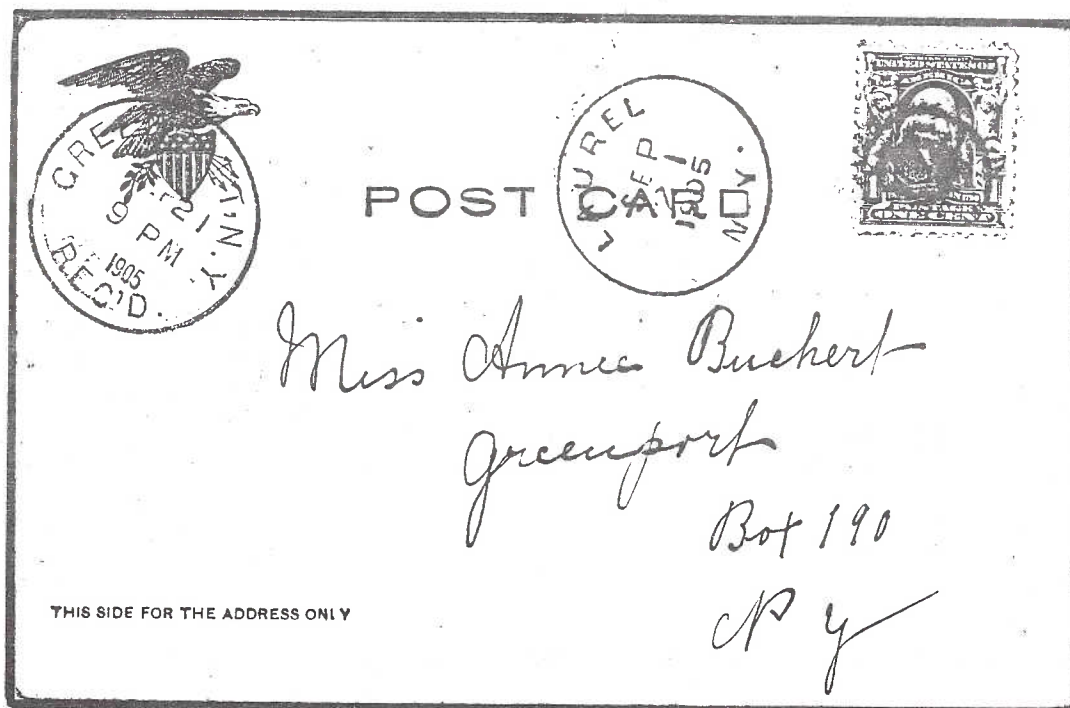


The very scarce SHIELD fancy cancel used at Jamesport tying an 1861 3c stamp on cover to Conn., used on November 10, (1864).



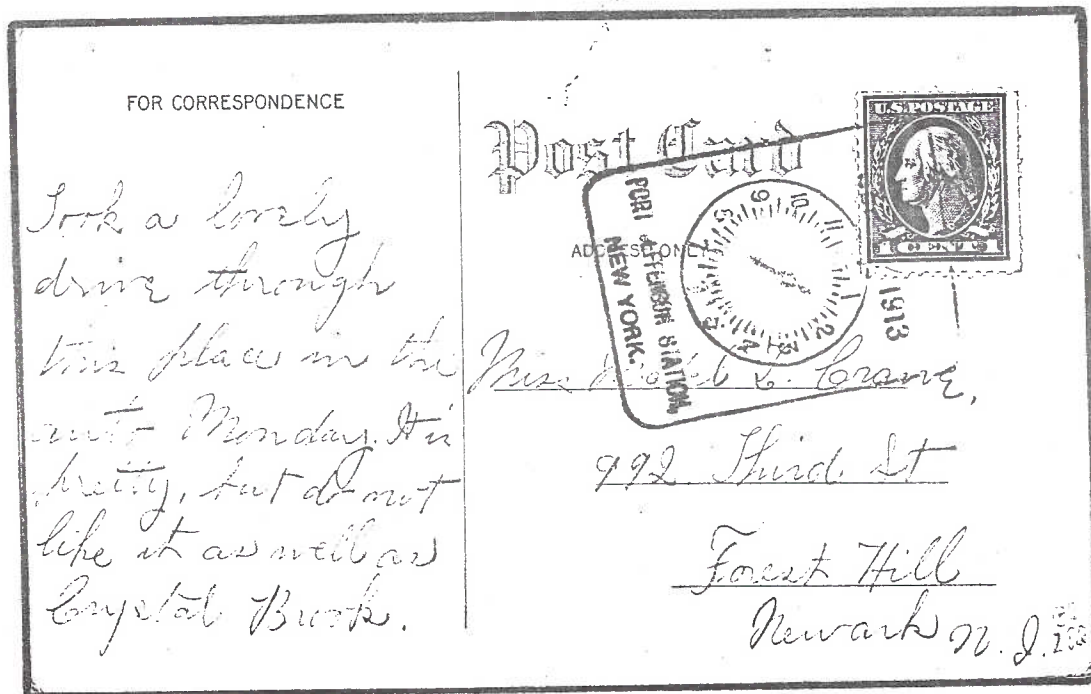
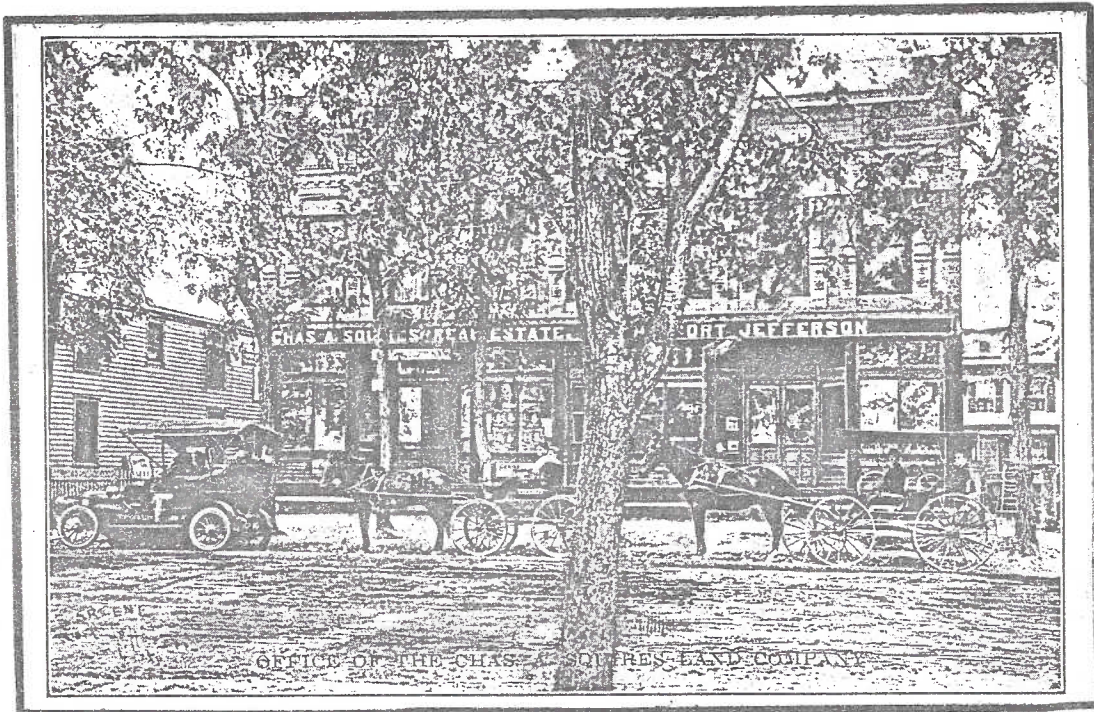


A 1942 photo of the LAUREL P.O. and pumping station. This building is still in used as the post office at Laurel at the East end of L.I.



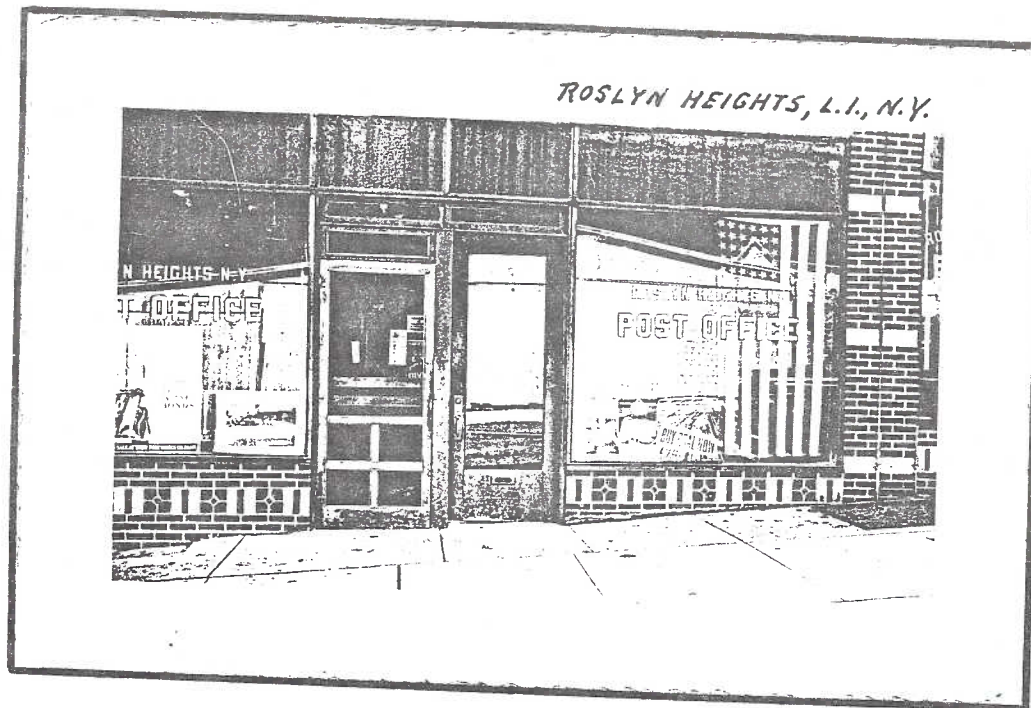
The Laurel P.O. was established on February 5, 1898. A clear postmark from 1905 is shown on this postcard to Greenport.

The post office, jewelry store and real estate building of postmaster Charles A. Squires at PORT JEFFERSON STATION. This P.O. was first established as the ECHO P.O., changing to its current name on June 7, 1910.

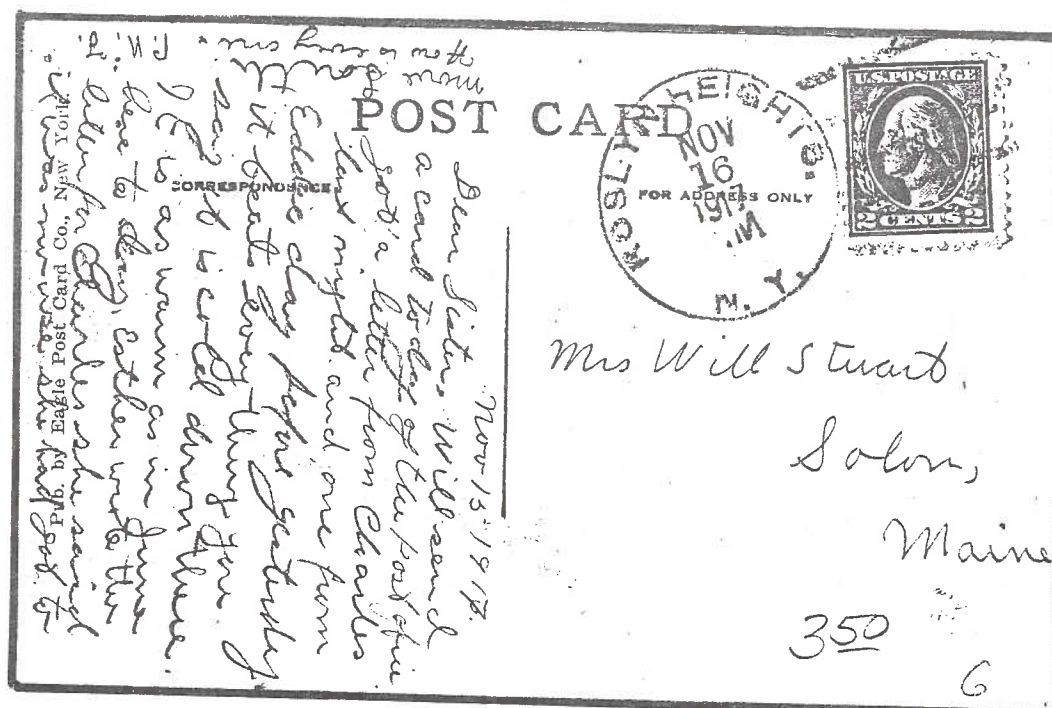


A very unusual postmark from Port Jefferson Station used on September 11, 1913.

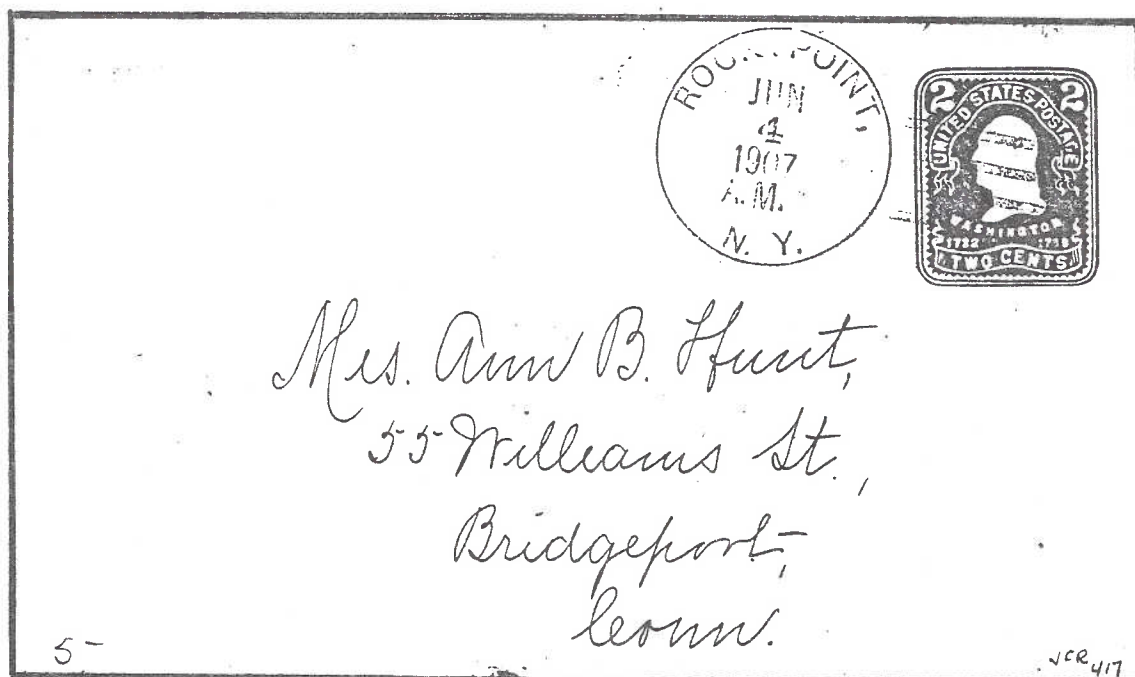
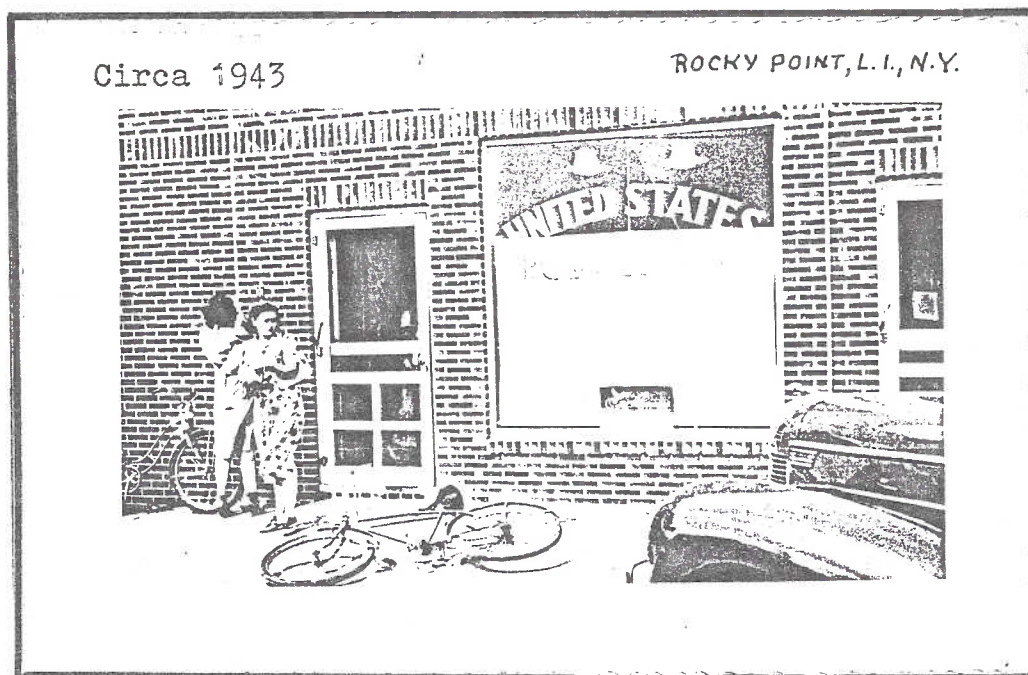
A circa 1943 photo of the ROSLYN HEIGHTS P.O. showing the many signs for defense. A large 48 star American Flag is proudly displayed.



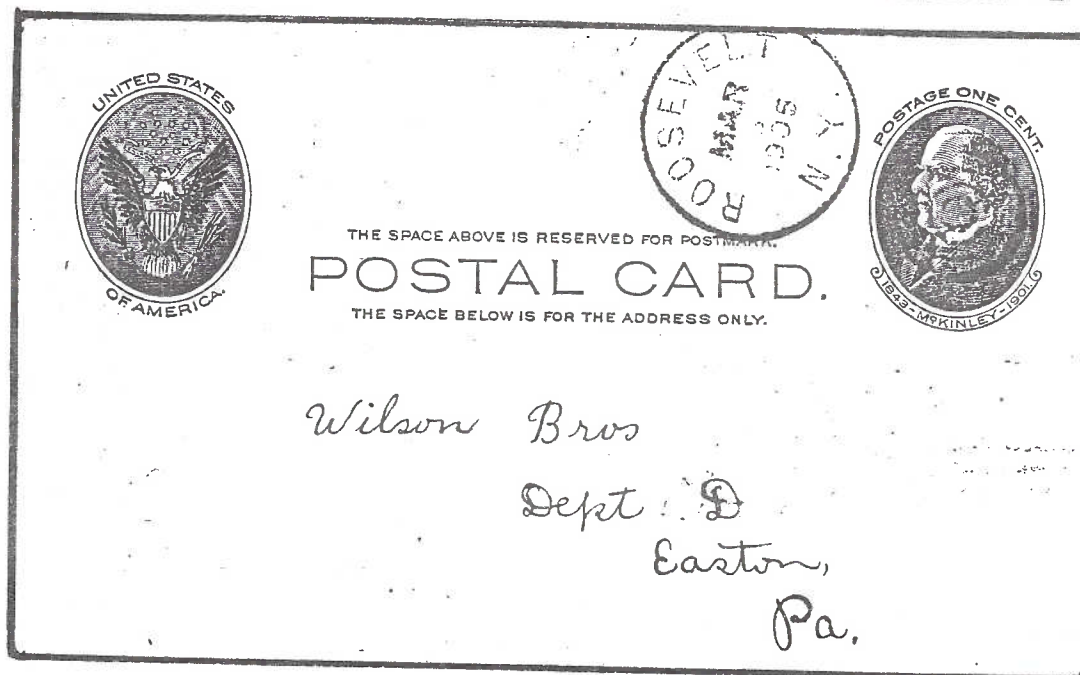
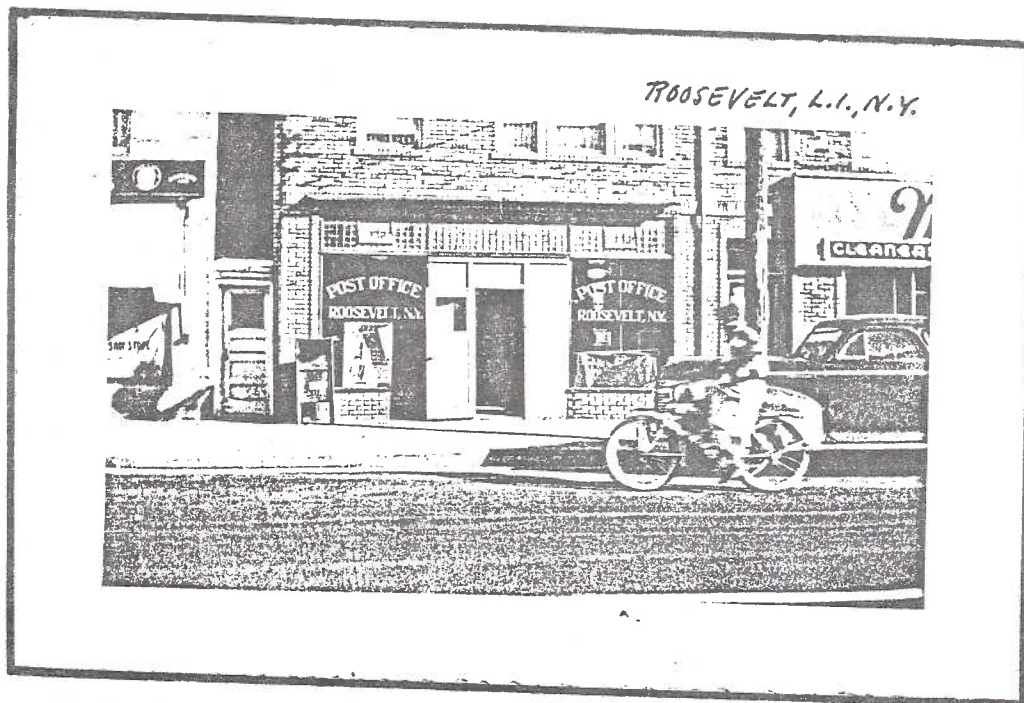
This P.O. was established on July 18, 1913. A post card postmarked there in 1917 is shown below.



A 1943 photo of the ROCKY POINT P.O. The sign says "We the People - ARM FOR DEFENSE" commonly seen on post office windows during the second world war. This post office was established on March 6, 1872. Here a 1907 duplex postmark is shown on cover.

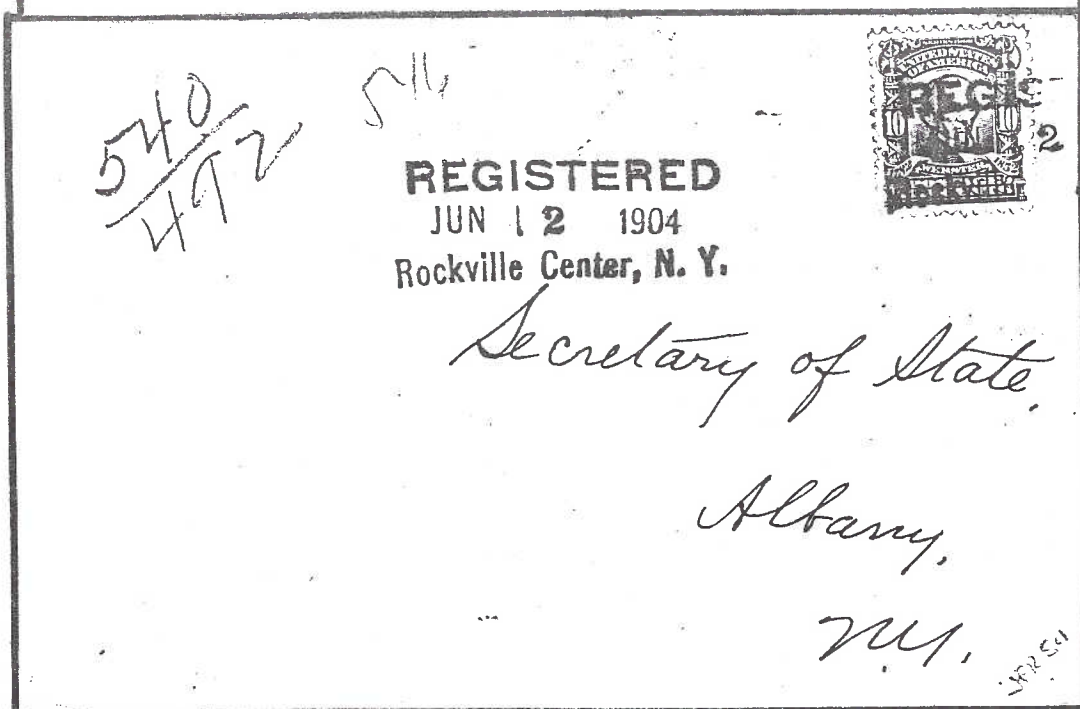
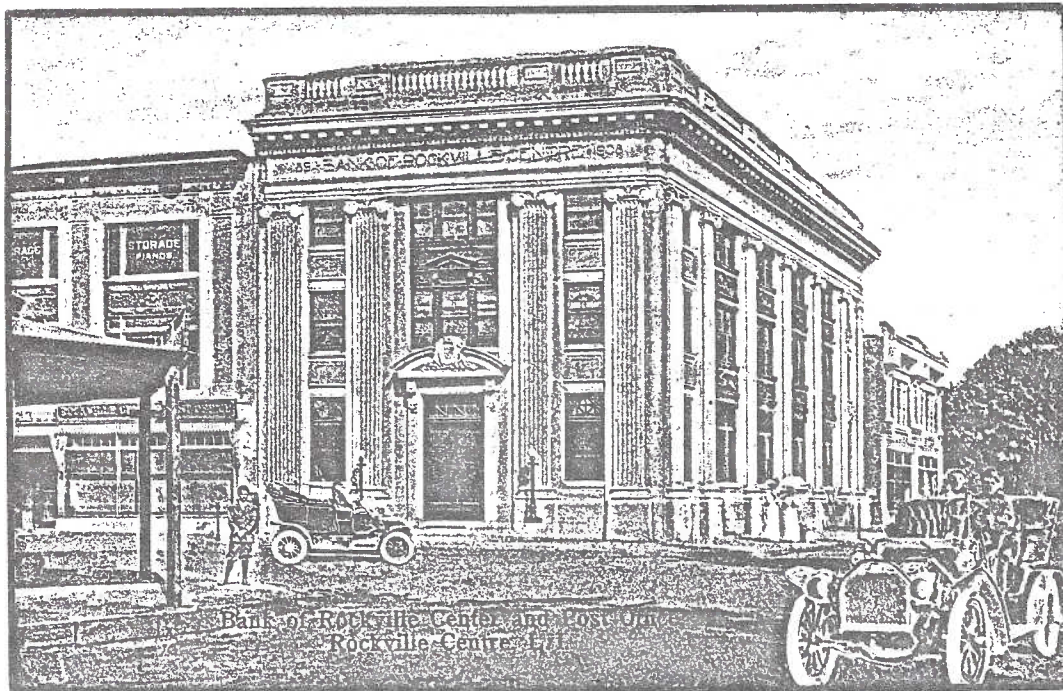


The Post Office at ROOSEVELT, Nassau County. This P.O. was established on March 1, 1902 with Charles C. Moore as first postmaster. Undoubtedly named after Teddy Roosevelt, a 1943 photo clearly shows the building then in use.



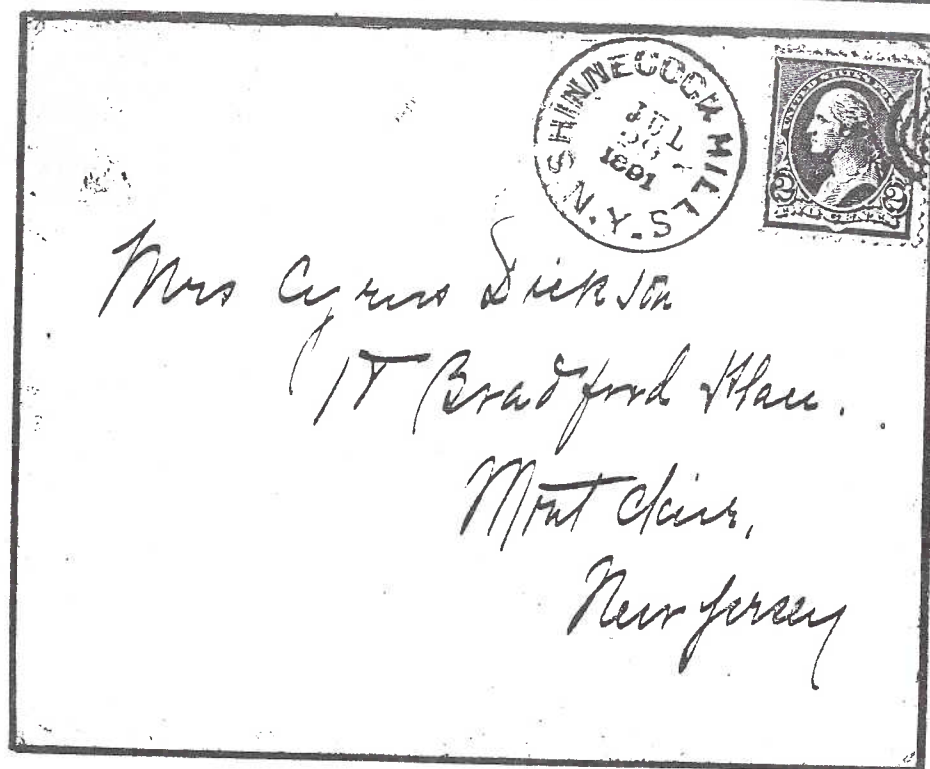
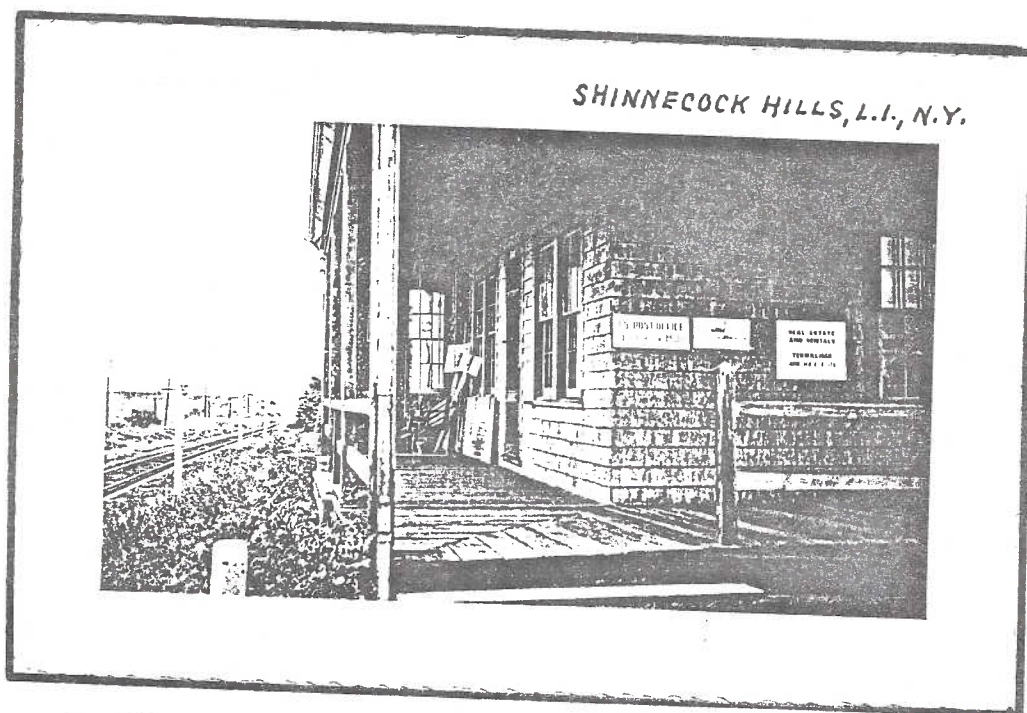
A 1905 postal card used at Roosevelt, L.I.

The ROCKVILLE CENTER P.O. to the left of the large bank building as shown on this double-tone sepia post card published by Voelker's Pharmacy, circa 1910.

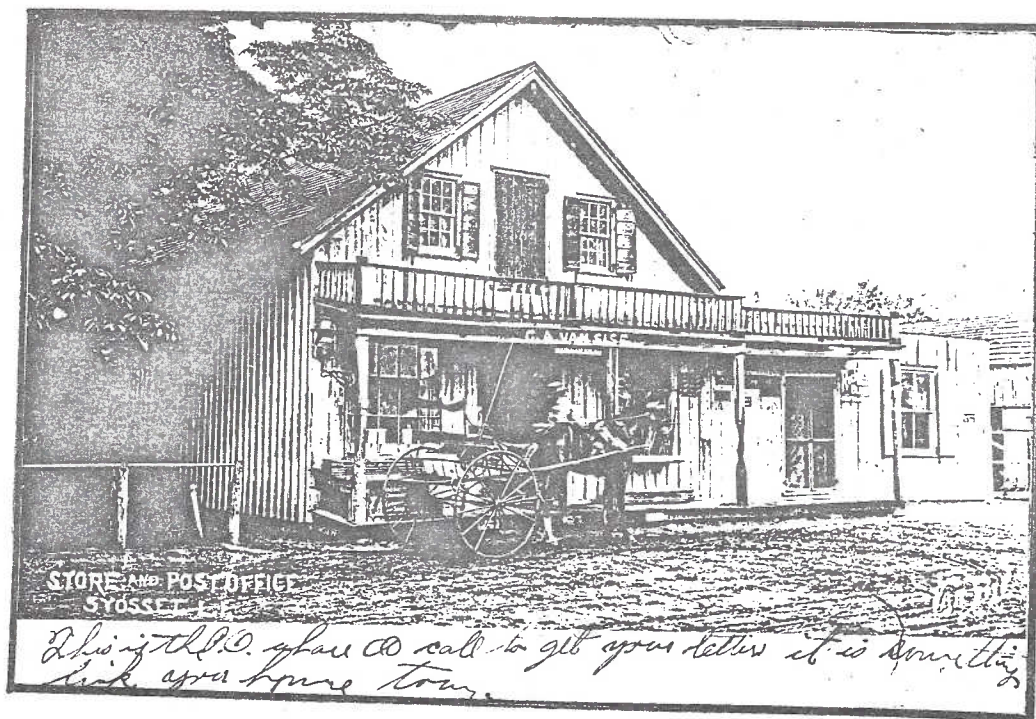


A 1914 Registered cover from Rockville Center. This post office was established on January 27, 1849 as Rockville Centre, changing to Rociville Center as mandated by the USPOD in its efforts to standardize names and spellings of post office names.

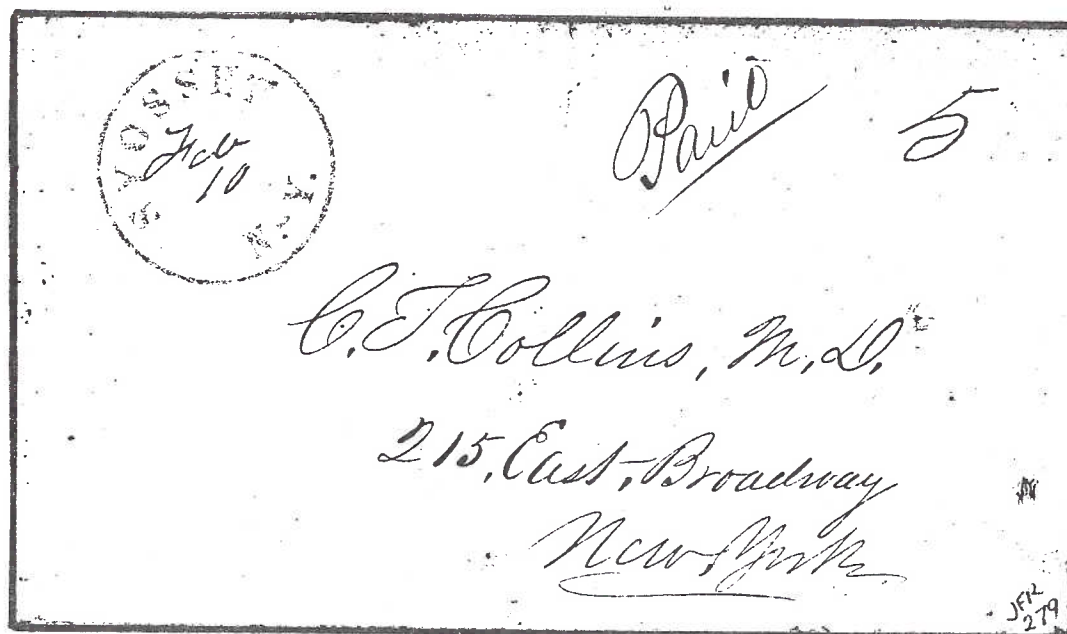
The summer post office at SHINNECOCK HILLS at the railroad station, circa 1943.



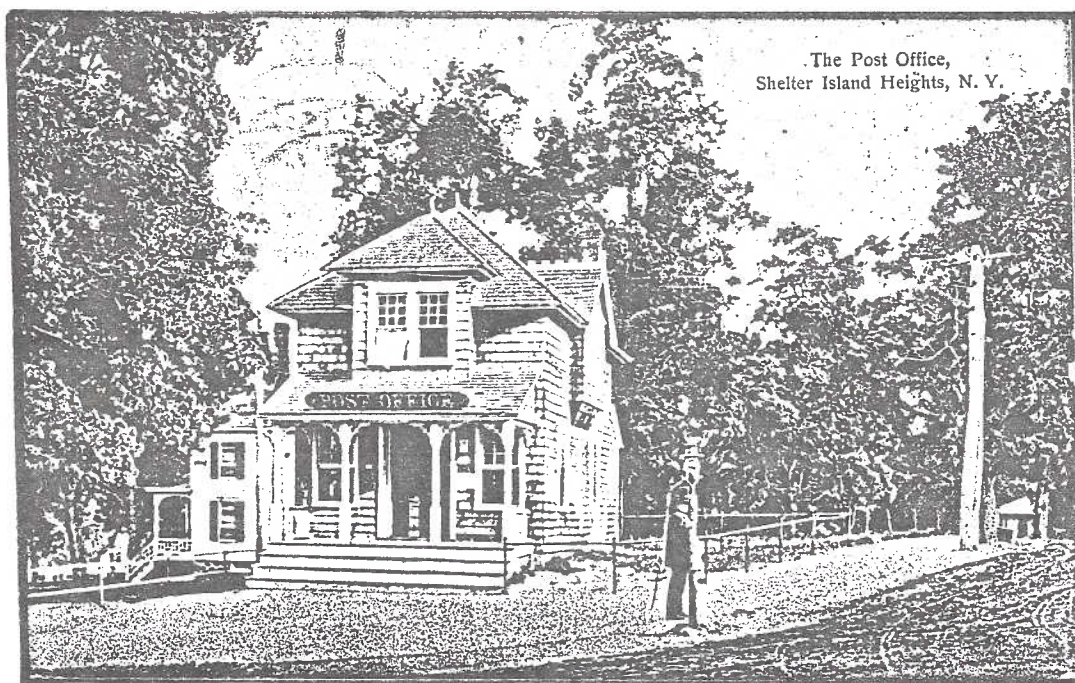
An 1891 cover used from Shinnecock Hills during the post office's second period of operation.



A magnificent real photo post card by photographer Van Sise showing the Van Sise general store and post office at Syosset. This building still stands near Cold Spring Harbor and Woodbury.



A red SYOSSET postmark and rate marking on a late 1840's cover to NYC. This P.O. was first established on January 5, 1846. It remained in operation until July 31, 1848. It was re-established on June 15, 1855.



The SHELTER ISLAND HEIGHTS P.O. building on a Korten post card, 1910. This office originally was established as Prospect Grove, changing to its present name on April 15, 1886.

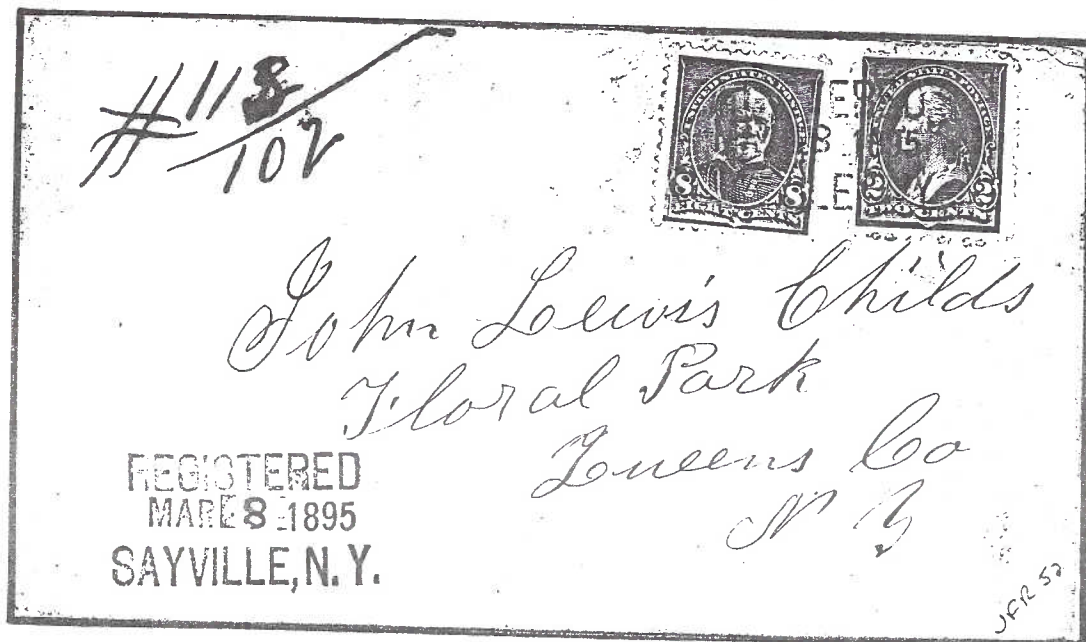


A nice purple cds with star cancellation used at Shelter Island Hights on August 18, 1886.

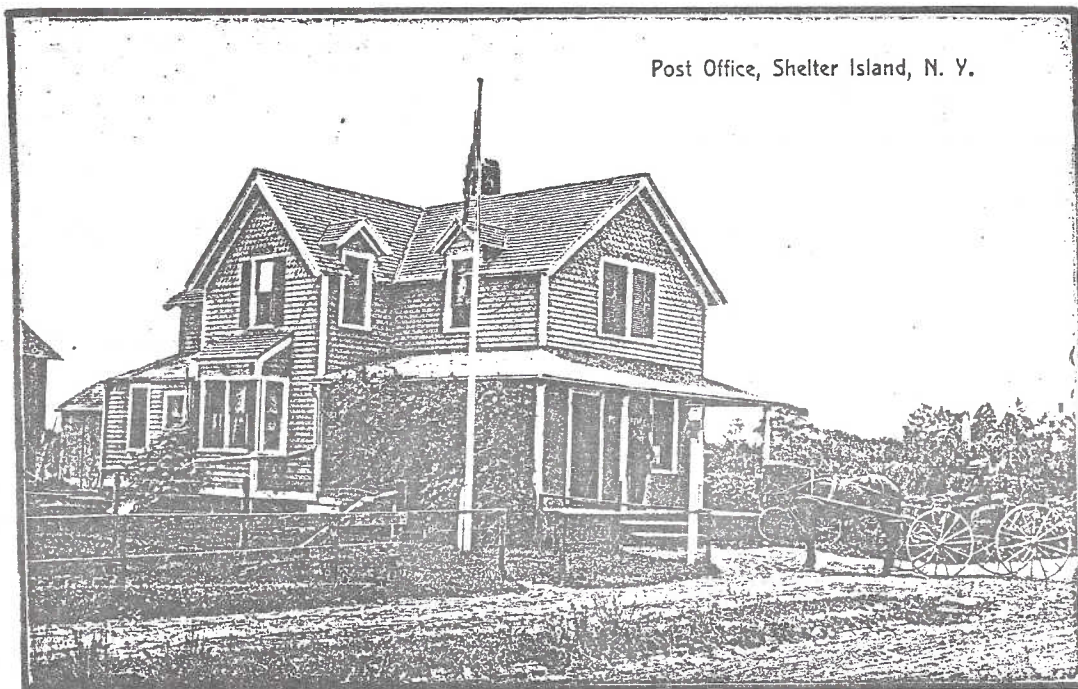
SAYVILLE, N.Y. post office as shown on this 1910 post card published by F. Gerber, Dept. Store. This post office was established in 1837 and continues in operation.



A nice purple handstamp used on Registered Mail at SAYVILLE in 1895.



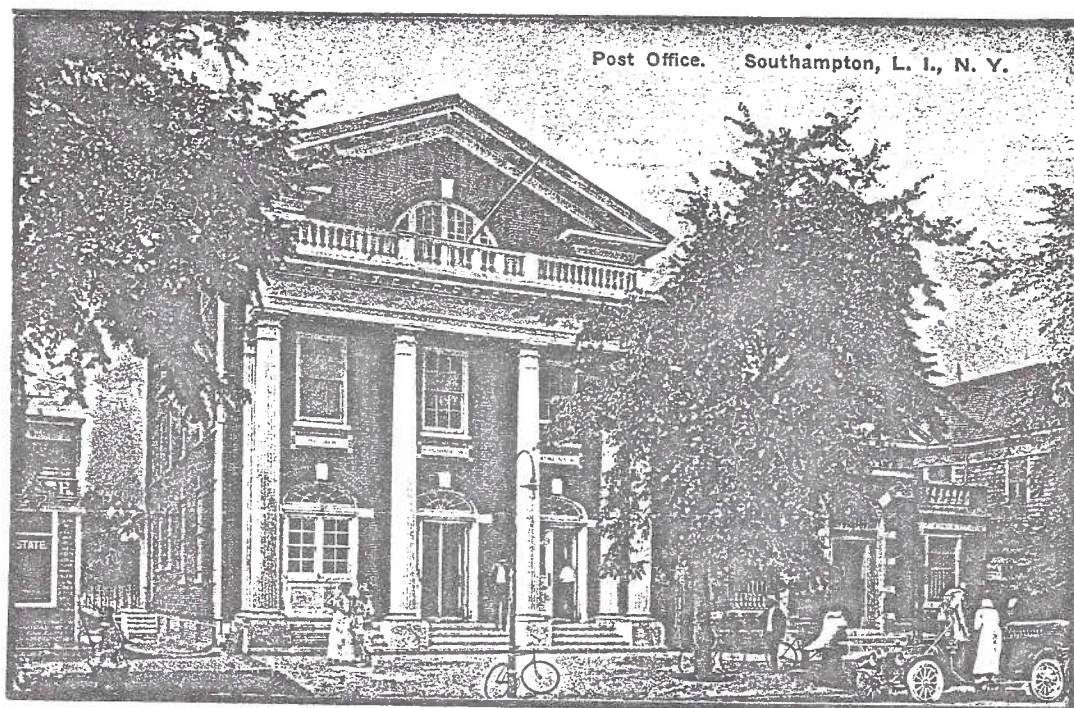
The Post Office at SHELTER ISLAND as shown on a 1909 post card.



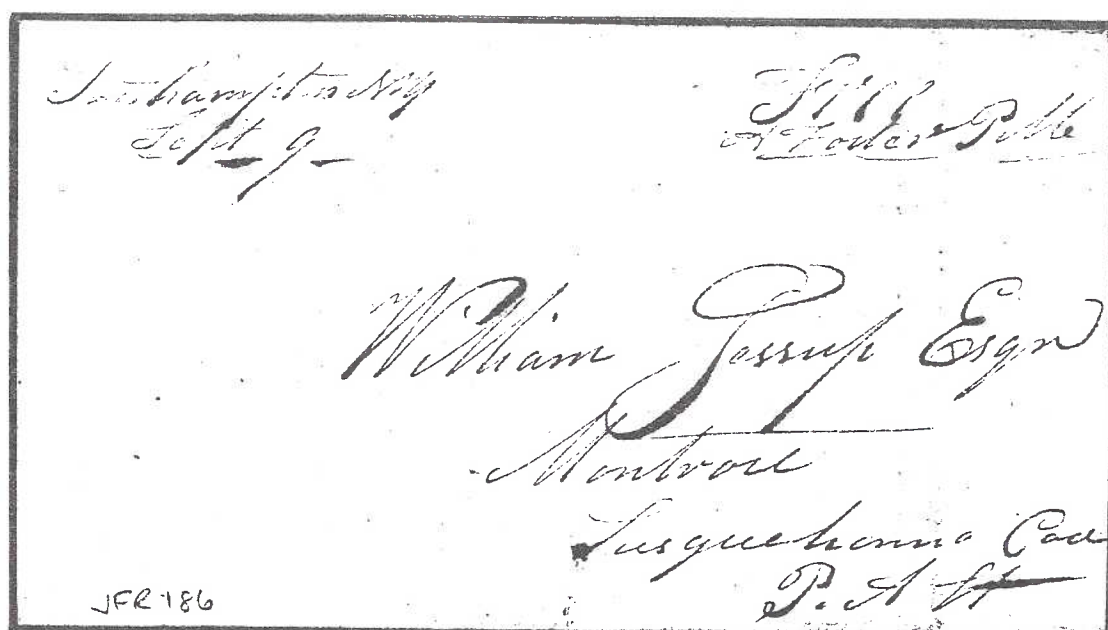
A choice 1852 SHELTER ISLAND cover to France postmarked by a manuscript "Shelter Island, N.Y. April 27th" postmark. Notation: "per Steamer Artic of the 1st May". A "Paid 21" denotes the prepaid rate to the continent. A clear double circle receiving handstamp "ETATS UNIS, PAQ. AM. B.A. CALAIS/13/MAI/52" denotes the date received in France.



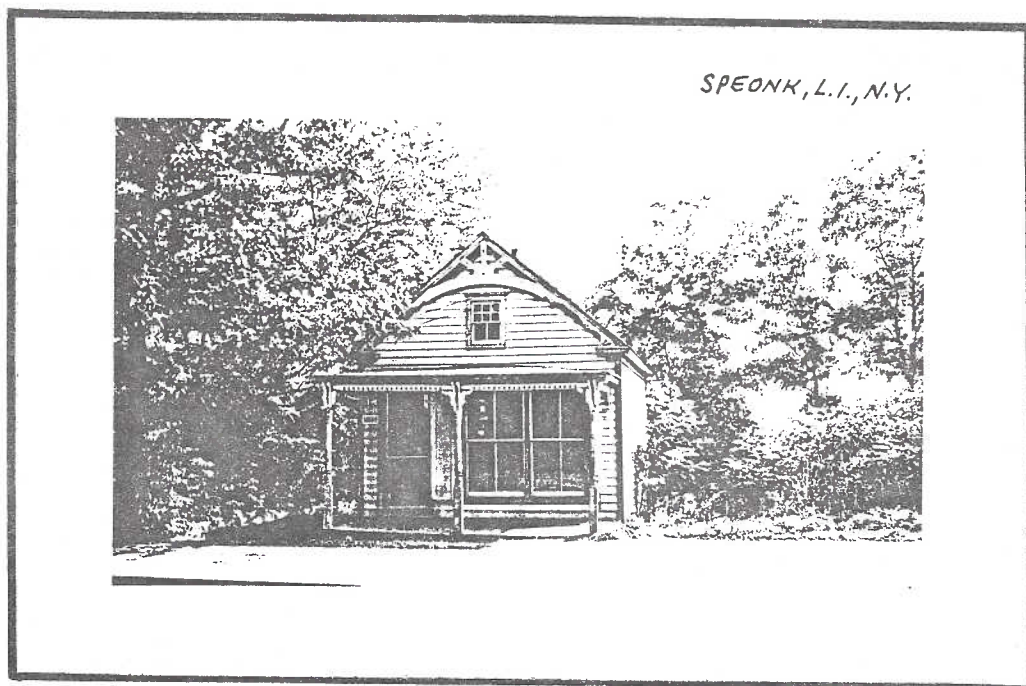
The Southampton Village Building and Post Office as shown on a colored post card used in 1922. This post office is one of eight original post offices first established on Long Island in 1794.



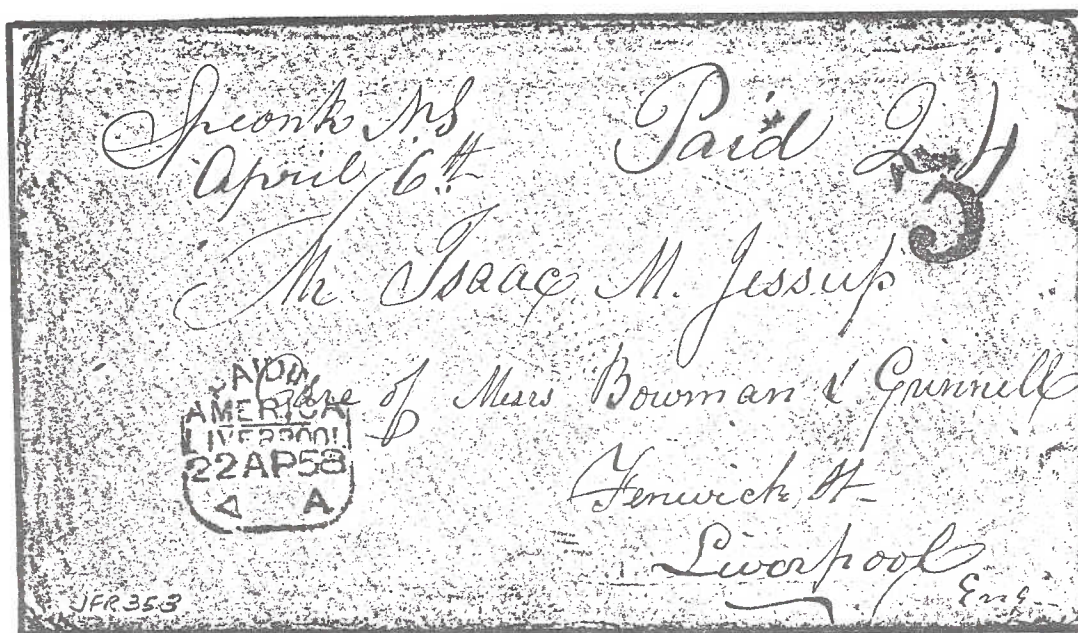
A stampless letter used at SOUTHAMPTON on Sept. 9, circa 1835 with the free frank of A.(bigail) Foster, probably the first postmistress on L.I. She received her appointment on May 31, 1831.



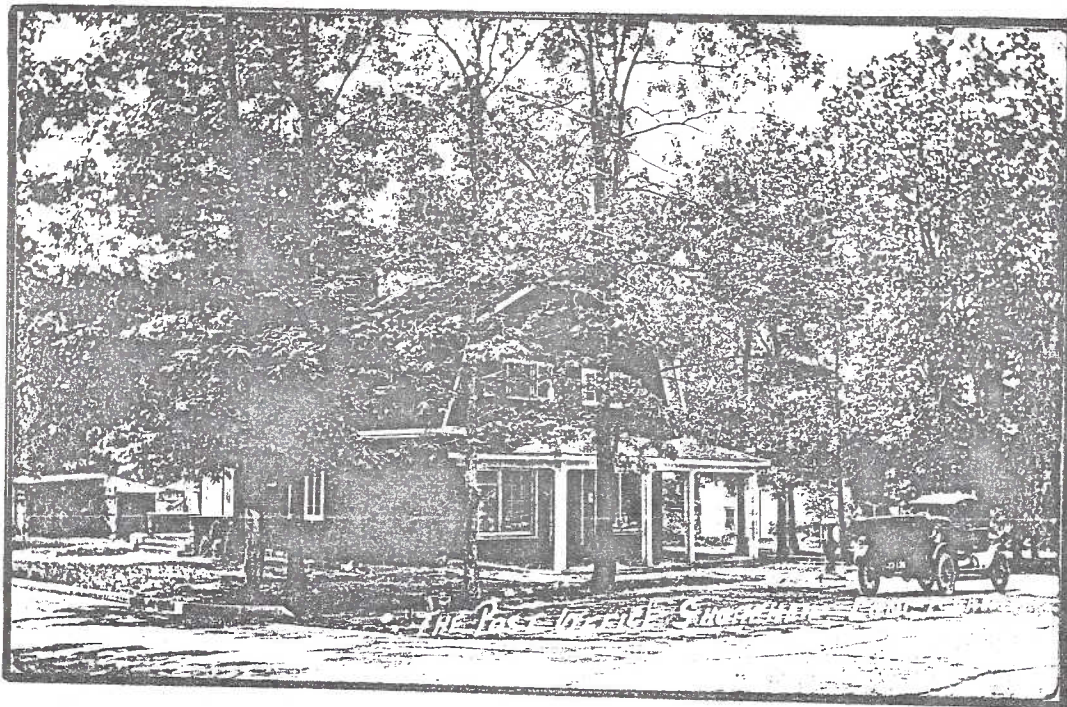
The SPEONK P.O. building from the late 19th century still in use in 1943 when this photo was taken. This post office was established on April 8, 1828 under Oliver Tuthill.



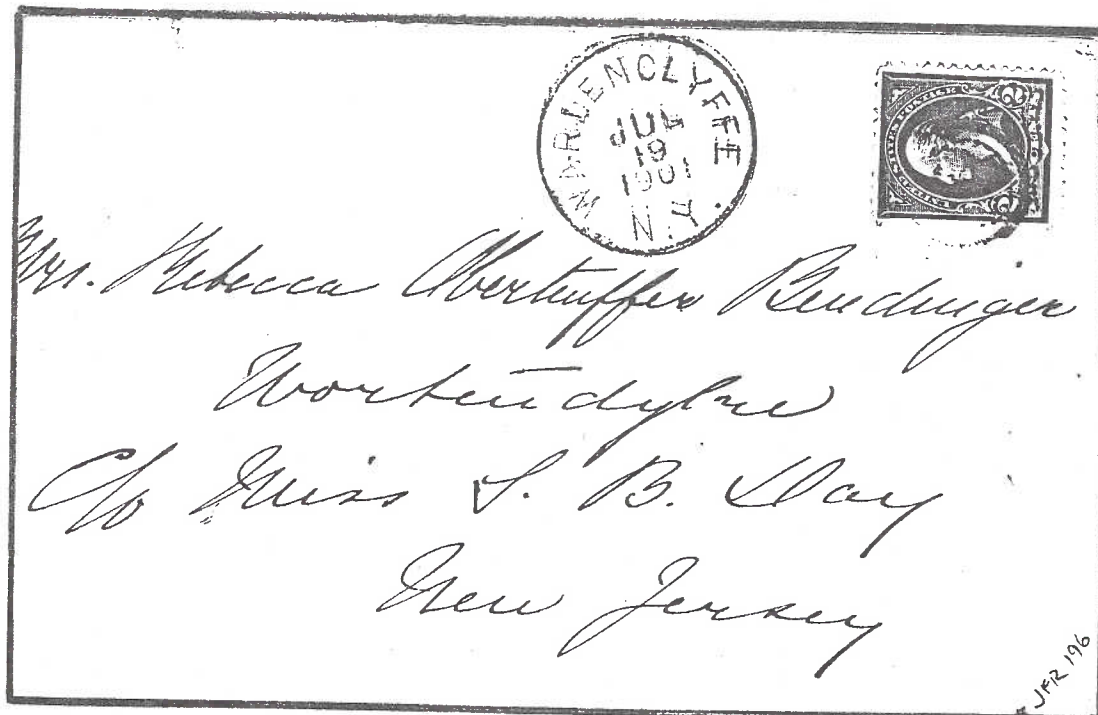
A very nice manuscript postmark from SPEONK used on a cover to England. A manuscript "PAID 24" indicates full prepayment of the trans-Atlantic rate to England then in effect. The letter was received at Liverpool on April 22, 1858 as shown by the red receiving postmark.



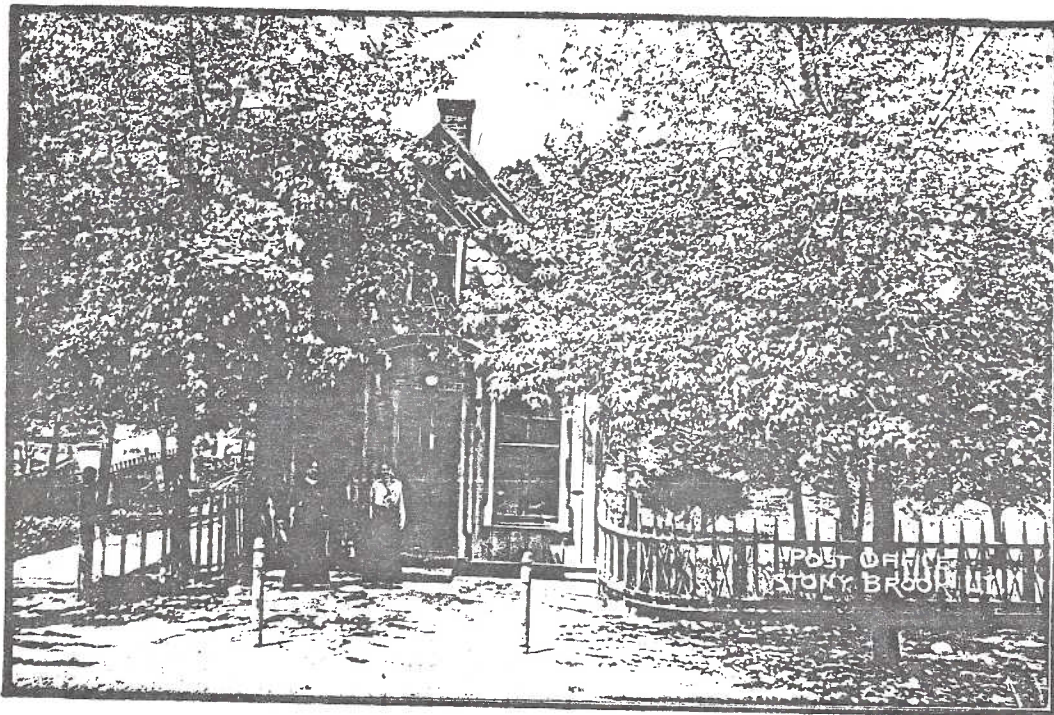
SHOREHAM, L.I. on a real photo post card view, circa 1920. The post office was located on the premises of a store and gas station.



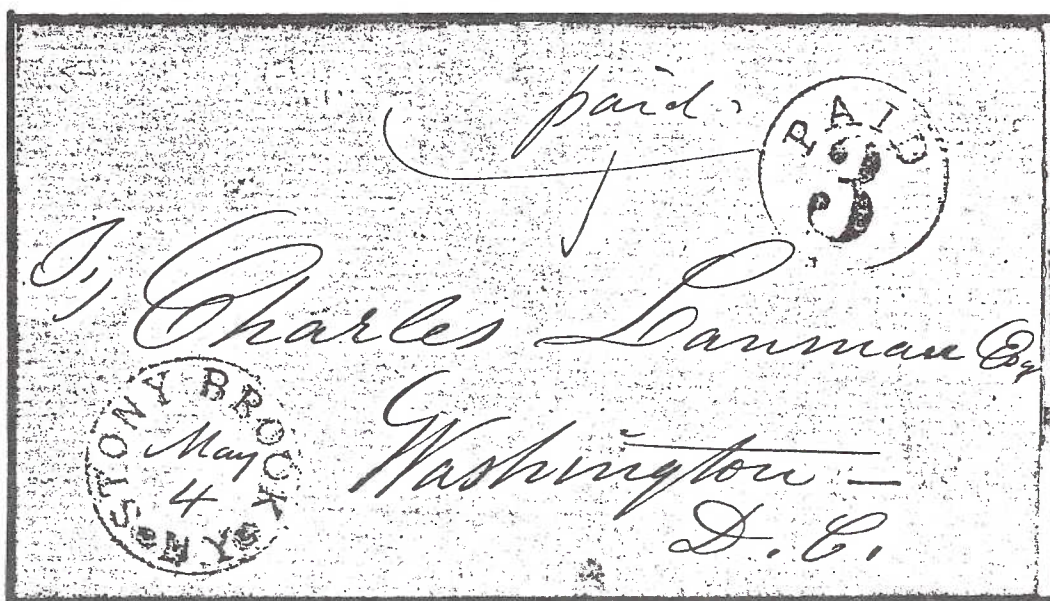
The SHOREHAM P.O. was first established as WARDENCLYFFE on April 2, 1901, but changed in May 8, 1906 to Shoreham. The cover shown below was postmarked at Wardencllyffe on July 19, 1901 during its first year of operation.



STONY BROOK's victorian post office building as shown on a real photo post card by F.P. Mapes of Lynbrook, circa 1908. According to postal records, this post office was first established on July 1, 1807 under Jonas Hawkins' management.



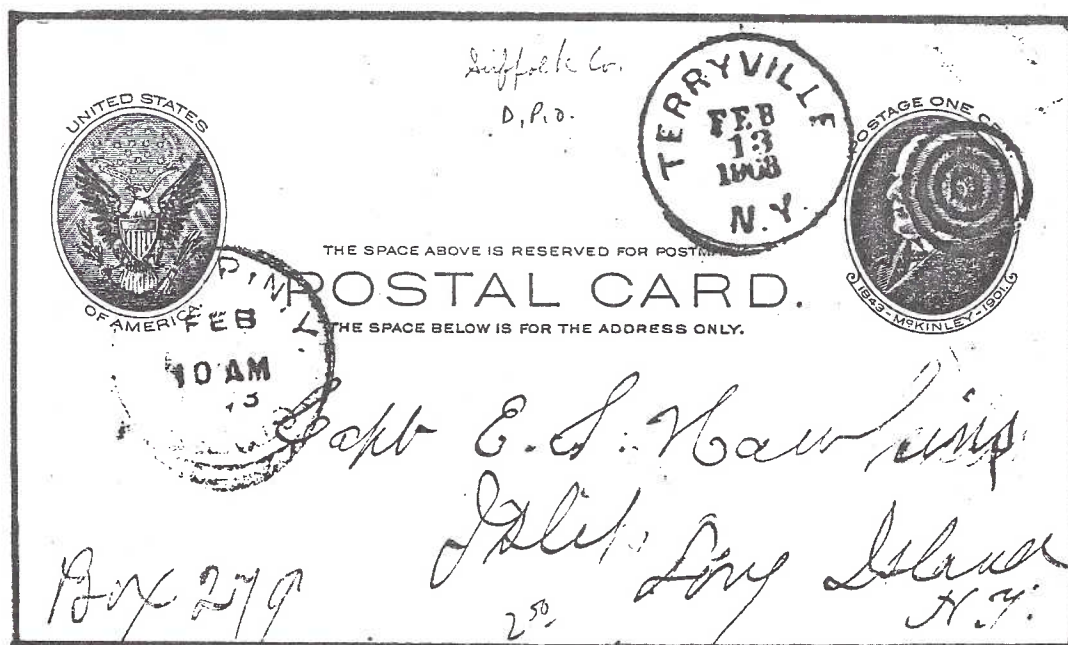
Two very nice red strikes on a stampless folded wrapper to Washington, D.C. The postmark has one rosette on each side of N.Y. The rate marking "PAID/3" within circle indicates that this was mailed in the early 1850's.



A real photo post card taken by A. Greene, well known Port Jefferson photographer, of the post office at TERRYVILLE. Evidently, the post office was located in the postmaster's residence.



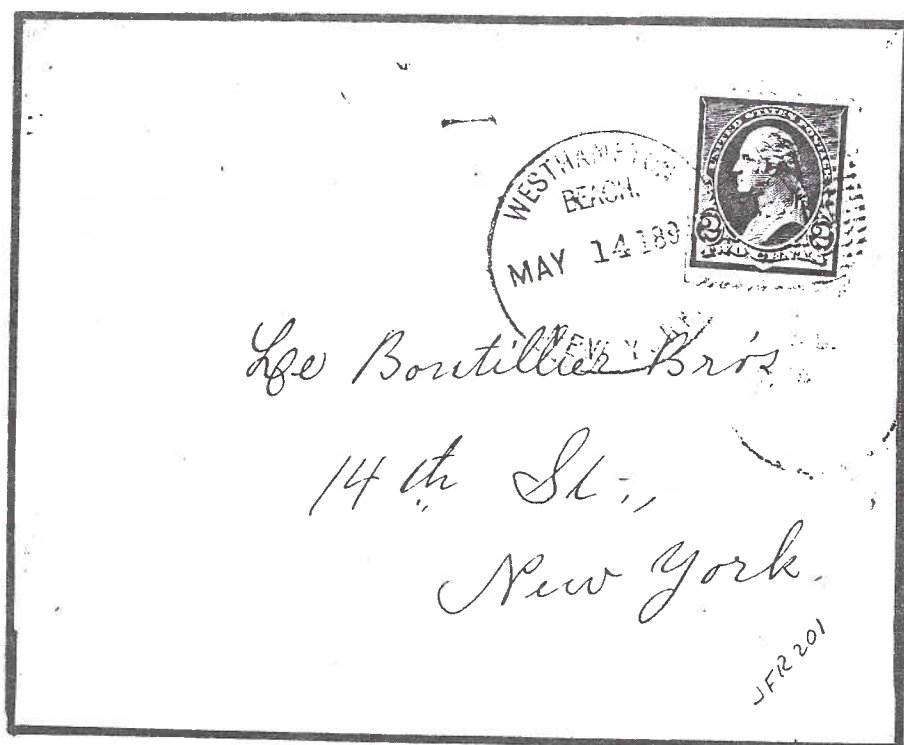
A sharp cds used at TERRYVILLE on February 13, 1903 on a govt. postal card to Islip. This post office was established on February 10, 1888 under Preston E. Terry as its postmaster.



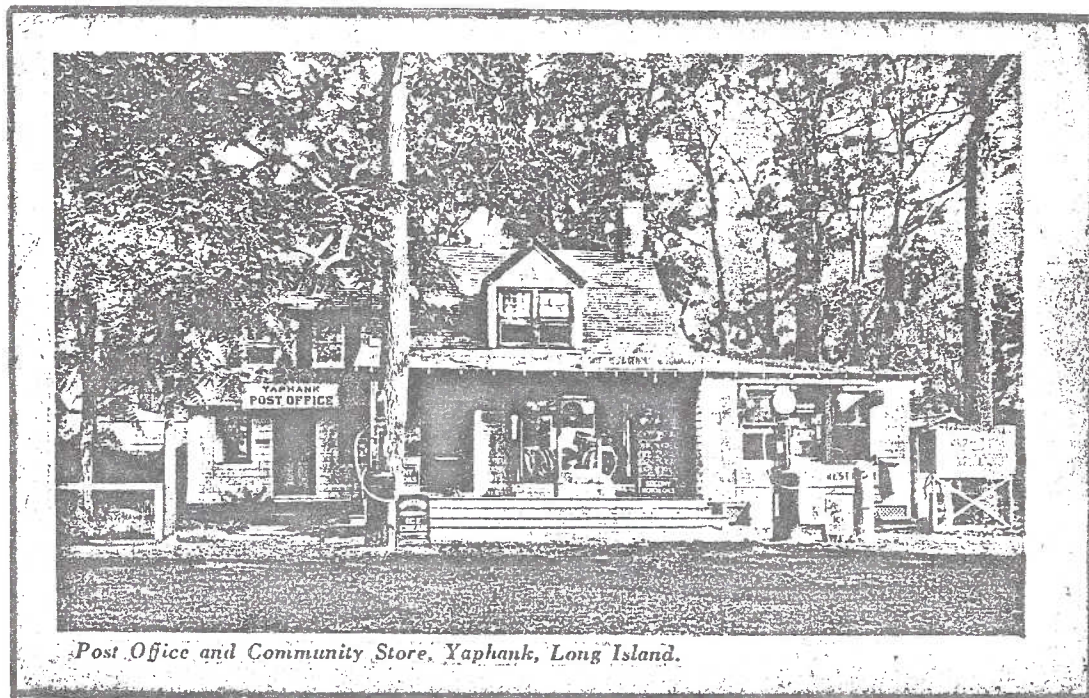
The WESTHAMPTON BEACH P.O. at Ernest H. Bishop's grocery store as shown on a 1906 post card.



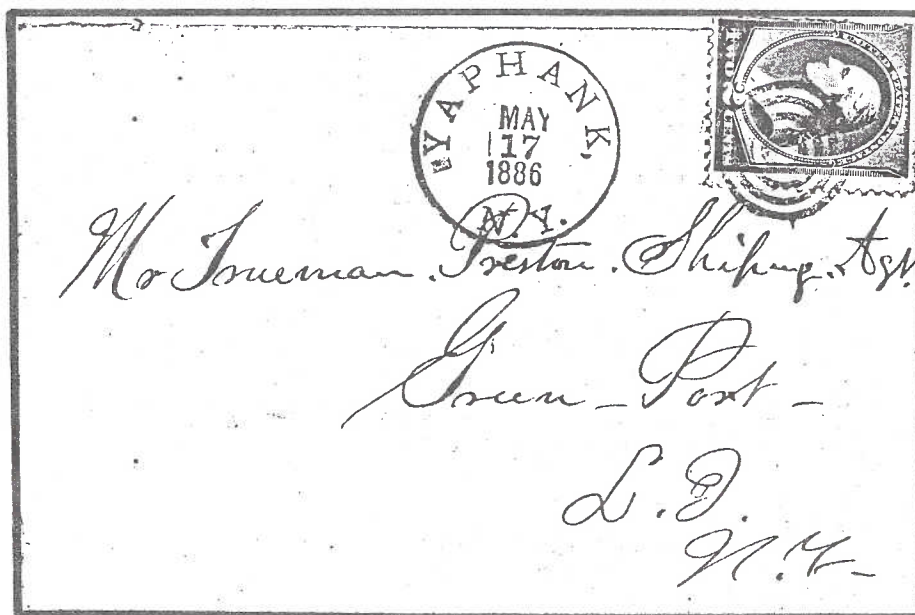
A purple duplex postmark used on a cover from WESTHAMPTON BEACH on May 14, 1891. A 16-bar oval killer ties the stamp to the cover. This post office was originally established as Westhampton Centre on July 5, 1882 later changing on December 22, 1890 to Westhampton Beach.



A post card view of the YAPHANK P.O. circa 1915. This post office was located next to the town grocery store and gas station. It was established on January 31, 1845 under Robert H. Gerard as its first postmaster.



A sharp 1886 postmark and cocentric circles killer from YAPHANK used to Greenport:

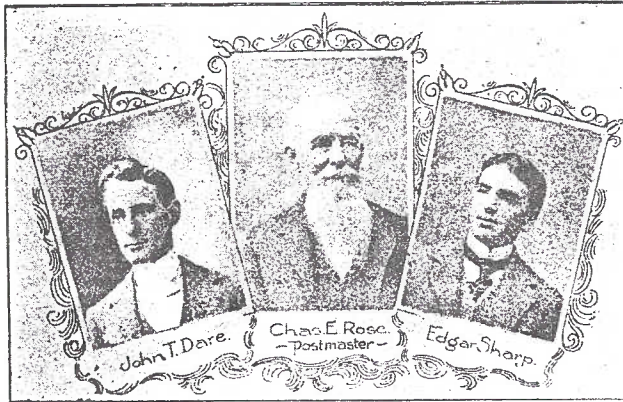


The Patchogue Post Office
An 1898 Profile from the Patchogue Argus

A FINE POST OFFICE.

PATCHOGUE CAN NOW BOAST OF ONE OF THE
BEST ON LONG ISLAND.

A good post office is one of the most acceptable blessings that the government can confer upon a town, and the Patchogue post office, situated in the new Syndicate Building, is the best in the county. The place is roomy and convenient, and the woodwork is superb. System and despatch prevail, the office being designed to promote facility in attending to



the different branches of post office work. The place is well-lighted, heated and ventilated. Patchogue is proud of its new post office, which was made a second-class office last July. Our post office was the first occupant of the new building, commencing business at the new stand about the first of April, 1898.

Mr. Charles E. Rose is the efficient postmaster. He was appointed to that position under Cleveland's first administration and again in his second term, and is continuing to fill the office with satisfaction to all. Mr. Rose, who was born at Patchogue on December 25, 1834, is too well-known by all the citizens of the place to need much comment. He has held many other positions of trust and honor in the village and town, and bears the enviable record of never filling a position which the public at the close of a term would not be heartily anxious to have him fill again. He is one of the best postmasters Patchogue has ever had.

Mr. John T. Dare makes a most accommodating and obliging assistant postmaster. This is his second year in the post office, and in addition to his duties there he also fills the position of clerk of the Patchogue Board of Education very acceptably.

Mr. Edgar Sharp, the junior assistant, who has been in the service of the United States for the last five years, made his start in that service under Mr. John J. Kirkpatrick, a former postmaster, afterwards serving a year under Postmaster Rose. He then accepted a position on the fast mail running from Jersey City to Pittsburg, Pa. After being there for three months, the Patchogue office was made second-class, and he returned to Patchogue, where he has been until the present time. Mr. Sharp is an accomplished entertainer, and his abilities in vocal and instrumental music have enlivened many a Patchogue gathering.

AUCTION ACTION - LONG ISLAND POSTAL HISTORY AT AUCTION

Member Fred Schmitt of Cold Spring Harbor, owner of Schmitt Investors Ltd., Box 67 Woodbury, N.Y. 11797 (516) 367-4030 recently published his Long Island Postal History Mail Bid Sale No. 1. The sale had 146 lots of postal history, documents, Longislandiana, etc. Some covers were from his stock but a good number were on consignment. The sale closed on June 30, 1987. We understand that all members of the LIPHS received the illustrated catalog. Therefore we will not discribe the lots.

The material was generally good with some interesting new finds. Fred promises another sale for the fall with many nice items not offered before. There will be less lots but better material.

This sale was well received and the Long Island collectors in our ranks were pleased. The prices realized are listed below. Lots not listed did not sell.

Lot No.	PR	Lot No.	PR	Lot No.	PR
-----	-----	-----	-----	-----	-----
1	\$ 140	75	\$ 15	138	\$ 45
5	\$ 75	84	\$ 40	139	\$ 15
7	\$ 100	85	\$ 30	145	\$ 10
9	\$ 10	86	\$ 125	146	\$ 30
10	\$ 15	87	\$ 350		
11	\$ 165	90	\$ 220	Total	\$4766
13	\$ 160	91	\$ 35		
15	\$ 145	92	\$ 55		
16	\$ 50	93	\$ 50		
17	\$ 155	94	\$ 20		
19	\$ 75	96	\$ 65		
26	\$ 115	97	\$ 30		
27	\$ 170	106	\$ 10		
28	\$ 150	109	\$ 15		
29	\$ 135	110	\$ 31		
32	\$ 105	112	\$ 75		
34	\$ 40	113	\$ 50		
36	\$ 60	115	\$ 25		
37	\$ 75	116	\$ 20		
40	\$ 60	117	\$ 160		
42	\$ 75	118	\$ 15		
43	\$ 125	122	\$ 55		
48	\$ 75	123	\$ 40		
53	\$ 30	127	\$ 100		
57	\$ 50	129	\$ 210		
58	\$ 25	130	\$ 80		
70	\$ 30	132	\$ 20		
73	\$ 100	133	\$ 30		
74	\$ 165	135	\$ 20		

*****C L A S S I F I E D A D S*****

WANTED - LONG ISLAND RECEIVING POSTMARKS; For study and collection. Contact: Brian Levy, 1983 Guildford Pk. Drive, Seaford, N.Y. 11783; (516) 781-4966

WANTED - UNITED STATES PIONEER AIRMAIL CARDS, Covers, related items, 1910-1916. Send photocopies and asking prices. Stephen Reinhard, P.O. Box 110, Mineola, N.Y. 11501

FOR SALE - Good duplicates from my collections. Long Island books, photos, postcards and many L.I. covers. Send for net price list. Fred Rodriguez, P.O. Box 112005 Miami, Florida 33111-2005

*****O*****

NEW MEMBERS INVITED!
U.S. Cancellation Club
APS Affiliate #75

Devoted to the study of U.S. cancellations and postmarks. We publish a lively journal (sample \$1.00), run a sales department for stamps and covers and encourage cancellation exhibits through USCC awards. Send inquiries to George and Evelyn Lewis, P.O. Box 545, Clearfield, PA 16830.



The Long Island Postal Historian, The Newsletter and Journal of the Long Island Postal History Society, is published quarterly and is dedicated to the collection and research of the postal history of Brooklyn (Kings Co.), Queens, Nassau and Suffolk counties.

Advertising rates are as follows;

Outside back cover :	\$50.00 per issue
	or \$180.00 per year
Inside front/back cover:	\$40.00 per issue
	or \$140.00 per year
Full page :	\$25.00 per issue
Half page :	\$15.00 per issue
Quarter page:	\$10.00 per issue

Deadlines for receipt of artwork and payment as follows;

Fall issue	- Sept. 1
Winter issue	- Dec. 1
Spring issue	- March 1
Summer issue	- June 1

All copy will be reduced to an 8½ x 11 format. Send payment and ad copy by appropriate date to :

Joel Shapiro
135 E. 83rd St.
N.Y.C., N.Y. 10028

*****THE LONG ISLAND POSTAL HISTORY SOCIETY*****

Application for Membership

NAME _____

ADDRESS _____

TOWN _____ STATE _____ ZIP _____

COLLECTING INTEREST (If any, be specific)

SPONSORED BY: _____

PHILATELIC REFERENCES

APS NO. _____ OTHER SOCIETIES _____

OTHER REFERENCES _____

COMMENTS: _____

Annual Dues - \$10.00 covering the fiscal year August through July

Your Signature Here

Please return with your check to the Secretary:

Mr. Daniel M. Knowles
LONG ISLAND POSTAL HISTORY SOCIETY
97 - 10 71st Ave.
Forest Hills, N.Y. 11375



LIPHS
Board Meeting
November 21, 1987

- I. Minutes of Prior Meeting
- II. Treasurer's Report
- III. Secretary's Report
- IV. New Business
 - A. Change Election process to calendar year, starting with 1988. Need to elect President as current Acting Pres. will not run. All other positions need to be re-elected or new officers elected if any of the current officers declines nomination.
 - B. Need for LIPHS Library - supplied via donations and outright purchases. Reference books, catalogs, microfilm rolls, video tapes, slides, Society scrapbook, etc.
 - C. Desire to establish an LIPHS award for any member exhibiting L.I. postal history.
 - D. Status of advertising efforts in the LIPHS (Shapiro)
 - E. Member recruitment efforts (Levy-APS)
- V. Need material for the Postal Historian - HELP!

\$8/mo Bank chance & → Price tot 118.50
Donation Postage to LIPHS

Brown ! ✓ with APS what they have
in Long Island material

Buy Ask APS for 100¢
✓ of APS if they would do our
mailing



APS REPRESENTATIVE REPORT

BRIAN LEVY

The American Philatelic Society Celebrated its 101st anniversary at STAMPSHOW 87 held at the Sheraton-Boston Hotel, August 20-23, 1987. My wife Joan and I took the opportunity to take a mini vacation as well as add some material to my Long Island collection. Boston has plenty of historic sights and great restaurants.

The first day at the show I volunteered to cover the APS Affiliates booth. With the help of the local Boston people, we fielded questions regarding the different societies and handed out membership forms. It was an excellent way to push our Long Island Society and to meet new philatelic friends. While at the booth, I met the librarian from the Cardinal Spellman Museum who has now entered the Historian in the 1988 competition for philatelic writing.

The APS invited the Affiliate Representatives to a fine luncheon on Saturday where we met Affiliate Chairman, Robert de Violine (Pacific '97). Common problems were discussed and several suggestions were presented to improve membership and lower costs. some of the ideas:

- A - Free membership for dealer if he sends our form to his customers with his mail.
- B - Use Bulk Mail for mailings.
- C - Have a separate dues mailing and note on Journal 'last issue' if expiring.
- D - Use the APS facilities such as mailing lists, and a free room at major shows for our meeting.

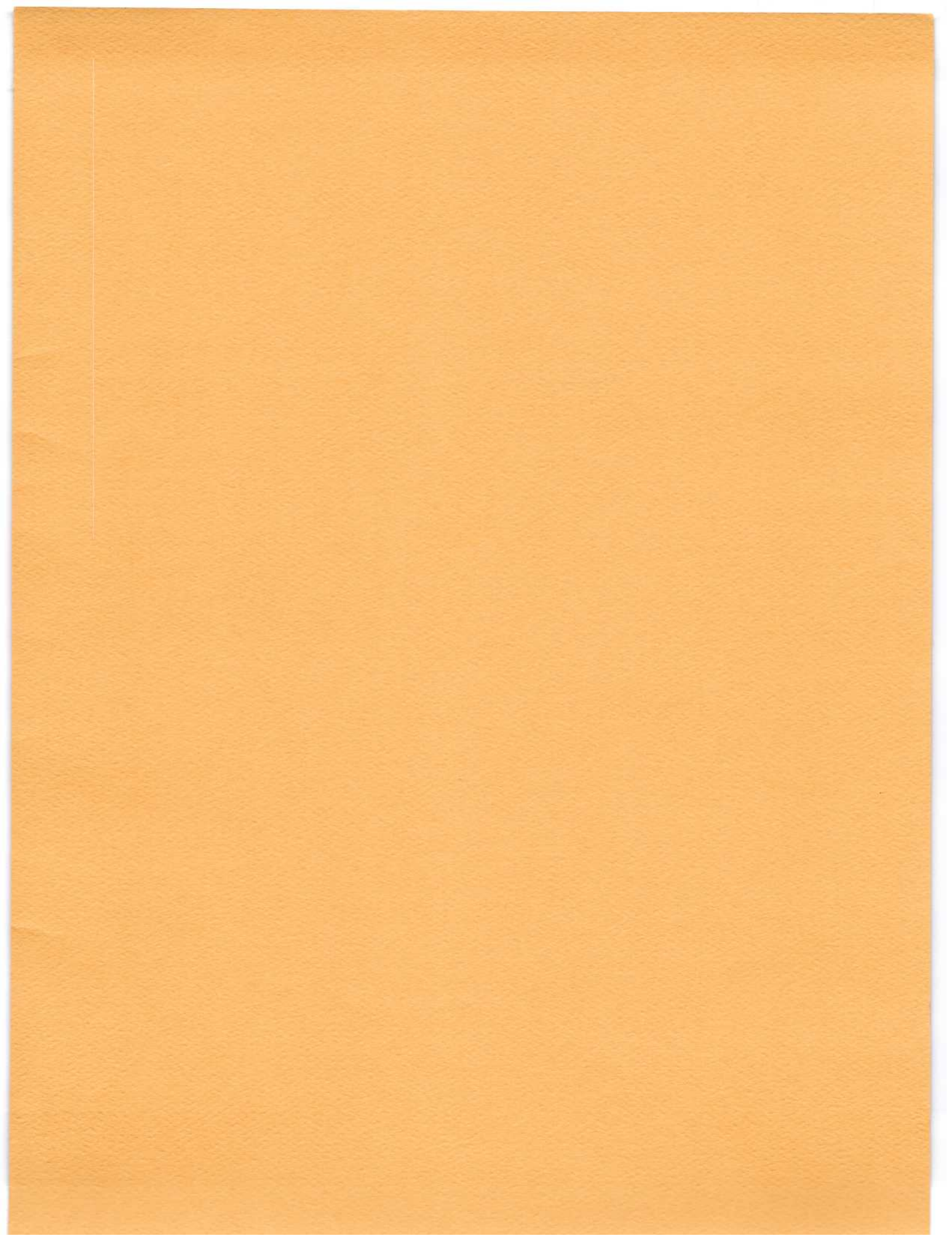
While each affiliate is different we all can learn from one another. Some of what was mentioned could not be used by LIPHS, but if one member joins our society or learn more about Postal History, we have been successful.

During November, The APS will publish the Affiliate Handbook, which will note all the LIPHS highlights along with membership information. Keith A. Wagner, Executive Director APS, stated in his meeting report, "we have evidence of a firm base of support for organized philately in the United States". May we grow with the APS and continue to learn from each other.

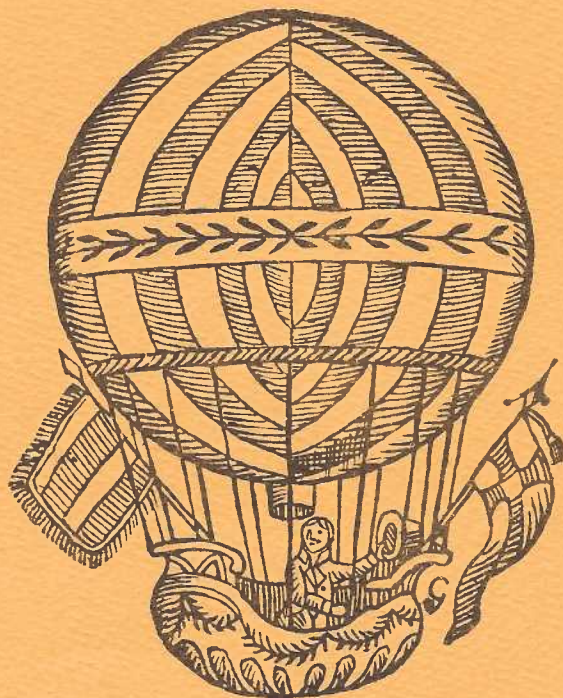
LONG ISLAND RECEIVING MARKINGS
COMPILED BY BRIAN LEVY

TOWN	CLTR	STRIKE	SHAPE	COL	INSIDE DATE	REMARKS
BABYLON	F	VG	O		7/15/1885	
BAYPORT	B	VG	C		JAN/25/1904/9AM/	REC'D CARD
BAYVILLE	B	G	C		AUG/7-/NY	1890+LOC'T VALLEY
BELLPORT	B	F-VF	C		NOV/16/11AM/1906	CARD
BROOKHAVEN	B	F=VF	C		JAN/-/1899	+OTHER MARK
CUTCHOGUE	F	VF	C	BK	JUL/9/1891/N.Y.	
COLD SPRING HBR	F	F	C		JUL/12/1887*NY	WITH 3D STAR
EAST WILLISTON	F	SUP	C	BK	W.. /FEB/24/1888/QUEENS CO NY	
ECHO	F	VF	U	BL	RECEIVED/JUL/13/1908/ECHO, NY	
GREENPORT					MANY, EARLIEST 7/86	
GOODGROUND	F	VF	C		APR/2/7PM/1898/REC'D	
HOLTSVILLE	B	SUP	C		EARLY OCT 7 1886	
HUNTINGTON	F	F	O		JUL/27/NY	1888
HEMPSTEAD	F	VG-F	C		NY/NOV/10/1898/8AM/REC'D	
HEWLETTS	K	SUP	O		MAY 17 1890/QUEENS CO NY	
HEWLETT	B	VG	C		1907 CARD	
LOCUST VALLEY	B	VF	C		AUG 1/1890/9AM/REC'D	
MANHASSET HSE.	B	VF	C	M	AUG/-0/1901/7AM/REC'D	
MIDDLE VILLAGE	F	VF	C		9/12/1898REC'D AS POST MARK	
MINEOLA	F	VF	C		AUG/25/7AM/1899/REC'D	
NORTHPORT					MANY, EARLY MAY 85, SOME WITH STAR	
ORIENT	F	VF	O		1-24/88	
OYSTER BAY	B	G	C		JAN/26/11AM/1903	
PATCHOGUE	F	G	O		NOV 8 (1884)	
PORT JEFF.	B	G	C		RECEIVED/JUN11 1886/PJ NY	
RIVERHEAD	B	VF	C		NOV 1/830AM/1906/REC'D CARD	
ROSLYN	B	VF			MISSENT & FORW'D FROM ROSLYN	
SAGAPONACK	B	VF	C		OCT/11/9PM/1907 CARD	
SAINT JAMES	B	VF	C		FEB/25/8AM/1904 FROM STL FAIR!	
SHELTER I HGTS	F	VF	C		ST LINE JUN 23 1891/SUFF CO	
SMITHTOWN BR	F	VG=F	C		SMITHTOWN BR/AUG/8/NY	
STONY BROOK					MANY (SHIPMAN CORESP)	
WOODSBURGH	F	VF	O		11/10/88	
WOODMERE	B	F	C		MAY/8/1900/NY CARD	
WADING RIVER	F	VFC	C		JAN/9/7PM/1907/REC'D	

CLTR = COLLECTION OF (F) J. FRED RODRIGUEZ
 (B) BRIAN LEVY
 (K) K PITT



RICHARD C. FRAJOLA, INC.



UNITED STATES POSTAL HISTORY

PRIVATE TREATY SERVICES

PUBLIC AUCTIONS

Our auction catalogs have received awards as literature, find out by subscribing today. A subscription for the next 5 catalogs, including prices realised after each sale, is \$15.



RICHARD C. FRAJOLA, INC.

85 North Street

Danbury, CT 06810

Telephone (203) 790-4311