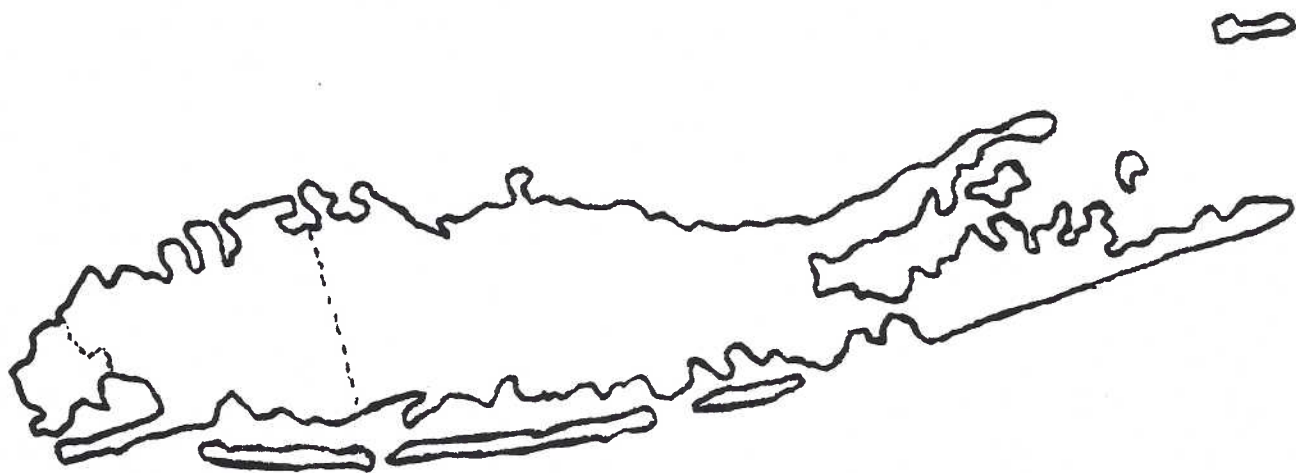


LONG ISLAND



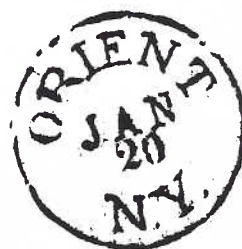
POSTAL HISTORY

SOCIETY

NEWSLETTER & JOURNAL
SPRING 1985

VOLUME 9 No. 1

WHOLE NO. 12



LONG ISLAND POSTAL HISTORY SOCIETY NEWSLETTER and JOURNAL
Spring 1985 Volume 9 no. 1 Whole No.12

President's Message.....	1
From the Editor's Desk.....	2
Secretary's Notes and Correspondence.....	3
Spring Meeting of the Society.....	5
News from the Board.....	6
The Central Islip Post Office.....	7
Sampler of Long Island Railroad Covers - Part III.....	16
Pan Am and Long Island.....	26
Long Island Post Offices -Part IV-Suffolk Co.....	27
Auction Action.....	38
Classified Ads.....	40

Organized
1980



Annual Dues
\$10

Post Office Box 1178
Southold, N.Y. 11971

President.....	Daniel Knowles
Vice President/Secretary.....	Arthur Fitzpatrick
Treasurer.....	Carl F. Baker
Directors.....	Arthur Pollinger J. Fred Rodriguez John M. Price Jr. Gary Hammond
Editor.....	J. Fred Rodriguez
Associate Editor.....	Carl F. Baker

The Newsletter and Journal will be changing its name!

Send a post card to the Editor with your suggestion
by April 20th. It should be short but descriptive.
All entries will be considered and voted upon at the
Spring Meeting of the LIPHS on April 21st.

PRESIDENT'S MESSAGE

I have often wondered why postal history collectors are attracted to geographical collecting.

On a recent trip to Toronto, Canada I was struck by the serenity of the city and great civic pride that the citizens take in their ultra-clean subway system, their beautiful old architecture, and what they perceive to be their good fortune to have such a beautiful city in which to live. This prompted me to immediately think of my own childhood days spent in a more rural and less crowded Suffolk County than I presently know. I thought of the days when there were few boats on the Great South Bay, no shopping malls, and not many ways to get around other than the Long Island Railroad and the Montauk Highway.

We all perceive and talk about the good old days. Perhaps the lure of geographical collecting to some Long Islanders is related to our attempt at reaching into the past and bringing it forward to the future.

I am sure that the collecting of illustrated covers, postcards and postal history itself is at least grounded in our recollection of the past. I, for example, have two first-day covers of the Shirley, Long Island Post Office signed by the first postmaster, Mr. Landau, when the office opened in 1952. This may not be a rare philatelic item. However, that postmaster dutifully saved every plate block for me, including the \$5.00 Hamilton from the 1954 Famous American Series. Without the kindly help of that man, I never would have had a plate block collection. He also steered me in the direction of collecting United States' stamps, particularly used ones and if possible, used on their original envelopes. That man is no longer with us; he was the victim of a traffic accident many years ago. However, his wife went on to become the postmistress of the same Post Office and she too spent many years saving the plate blocks for me even as I went into college and beyond.

The Philatelic Press constantly ponders how to get young people interested in collecting. My introduction was through our local postmaster. I wonder if he ever imagined that many years later my interest would be maintained, even heightened, and that much of my attention would now be turned to the collecting of the postal history of the region in which I grew up including the letters he himself handled. I am sure that all of you have your personal reasons for collecting Long Island postal history. I have given you some insight into my reasons.

I think that as long as there are people with memories of what they perceive to be a more relaxed, restful and uncomplicated life style, there will always be individuals interested in keeping those memories alive by collecting... postal history, photographs, postcards, etc..

With best wishes,

Daniel Knowles



FROM THE EDITOR'S DESK

Welcome to another edition of the Newsletter and Journal. Starting with this issue we will number the pages consecutively per volume and will include an index at the end of each volume. Many exciting articles are in the planning stage, but one and two-page articles are needed. Please contribute.

We want to thank Bob Miller for another interesting article on the role of Pan Am on Long Island airmail postal history. If others contribute we can have a regular column dealing with aerophilately. Long Island is rich in aerophilatelic history starting with the first official pioneer airmail flight of 1911 at Garden City Estates.

Many other Long Island airmail covers for special events, airport dedications, First Air Mail (FAMs) and Contract Air Mail (CAMs) exists. Let your Editor know if you want to see more of Long Island airmail history.

In closing, I want to extend a personal invitation to the members of our Society to attend the Spring meeting of the LIPHS at my home on April 21st. At that time I will take the opportunity of saying farewell as my family and I will be moving to Florida. I plan to continue editing the LIPHS Journal from there. I leave with mixed feelings as I have learned to love Long Island. However, I take with me part of its history embedded in my covers, books, maps, photos and other Long Island memorabilia that I collect. I will continue very much involved in researching its history, especially its photographic and postal history. While living away from L.I. perhaps I will learn to appreciate it more. One thing for sure, I will not miss my four hour daily commute to the city to and from Huntington. I don't want to deal with the LIRR anymore (except philatelically) and especially the New York subways. I won't miss LILCO or the LIE either. I'll say goodbye to high property taxes and hello to the Sunshine State. I'll miss the many friends that I have made through this hobby, but we will keep in touch through these pages. See you at the April meeting. See page 5 for details.

J. Fred Rodriguez

SECRETARY'S NOTES
& MEMBERS CORRESPONDENCE



We welcome the following six new members:

ARTHUR H. SPEAR
617 Ninth Ave.
East Northport, N.Y. 11731

RUFUS B. LANGHANS
Huntington Town Historian
228 Main Street
Huntington, N.Y. 11743

LORRAINE E. BAILEY
P.O. Box 1483
Arlington, VA 22210

MARIO MONTI
5 Hickory Road
Bayville, N.Y. 11709

EDWARD J. VOLAVKA
54 Grand Blvd.
Islip, N.Y. 11751

THOMAS E. STANTON
2109 Alice Ave. Apt. 2
Oxon Hill, MD 20745

Change of Address: DAVID W. SNOW
P.O. Box 566
Lindenhurst, N.Y. 11757

Our Society has 75 members, almost a seven-fold increase since the summer of 1980 when the first 9 charter members formed it. We hope that more members will participate by writing articles and by submitting covers for inclusion in the Journal. Help your editors!

A good number of letters came in. Excerpts follow:

In his letter to the Editor, Mr. Langhans, the colorful Huntington Town Historian, says: "Thank you very much for the Winter issue of your Newsletter and Journal. I do have a few suggestions concerning the history of Huntington. There is no such governmental organization as a township in the State of New York. It is Huntington Town or the Town of Huntington. New Jersey and Ohio have townships...its use is technically incorrect. The Town of Huntington was founded in 1653 and, what is now Huntington Village, an unincorporated area of the town, was known as the Town Spot. The use of the word 'village' became popular after the arrival of the Long Island Railroad to distinguish it from 'Huntington Station.' As for Oliver Cromwell, after he had the King murdered, he became known as the Lord Protector. His 'popularity' did not last too long since he was overthrown a few years later and the Crown reestablished...Commack comes from the Indian word Winnecomac. The "Winne" was dropped and the area known as Comac for many years. Later, the spelling changed to Commack. However, the correct pronunciation is "Comic". If this sounds odd, pronounce the name of the river that goes through Washington, D.C. and then look at its spelling."

We thank Mr. Langhans for his comments and welcome his insights in the future.

Member Edward Volavka tells us that his specific collecting interest is memorabilia of the Village of Islip - photographs, newspapers, postcards, letters, books, maps and bottles, etc.

We are indeed honored to count among our new members Mr. Arthur H. Spear, President of the Huntington Stamp Club. He is a member of the APS, the Collectors Club of N.Y., the Postal History Society etc. We trust that he will share the Journal with members of the Huntington Stamp Club. Some future postal historians will come out of that group and we hope they will join our society.

Lorraine E. Bailey collects a variety of things: crash covers, NY DPOs, and Valley Stream of which town she is a native. A nice note was received from David Keller wherein he offers for reproduction photos of the Remsenberg P.O. and the Middle Island P.O. both exterior and interior. We'll certainly use them in a future issue of the Journal.

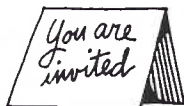
Bill Duncan tells us: "Reference is made to page 18, Winter 1984 Newsletter and Journal. PTS stands for Postal Transportation Service - this replaced Railway Mail Service, as many of the Railway Post Offices were discontinued and many were replaced by Highway Post Offices."

We noticed in the February 1985 issue of the Postal History Journal published by the POSTAL HISTORY SOCIETY, INC. the reprinting of Carl Baker's article on illustrated covers entitled *Long Island and its Early Hotels* which first appeared in our Journal No. 6 in 1983.

Mario Monti joined our group as a result of our ad in the Long Island Forum. He is a teacher and a bit of a Long Island historian. He's been a stamp collector, on and off, since he was a child. Now collects books, photos, post cards etc. about L.I. He sent us copies of some L.I. postcards with local cancels from various L.I. post offices at the turn of the century. Much appreciated.

We note that member David L. Jarrett will be the feature speaker at the annual meeting of the U.S. Philatelics Society in Cleveland. His topic is "A Panorama of U.S. Stampless Covers, 1714-1860" and will be illustrated with 150 color slides.

A number of other members have commented favorably about the Journal.



DONT MISS NEXT MONTH'S SPRING MEETING OF THE SOCIETY. SEE THE FOLLOWING PAGE FOR FULL DETAILS

* * *

THE LONG ISLAND POSTAL HISTORY SOCIETY WILL HOLD ITS
SPRING MEETING FOR ALL TO ENJOY!

DATE: SUNDAY APRIL 21, 1985

TIME: 1 P.M. TO 5 P.M.

PLACE: AT THE HOME OF FRED RODRIGUEZ
62 SHADY LANE
HUNTINGTON, New York 11743

DIRECTIONS: CALL (516) 261-8444 AFTER 7:30 P.M. OR
(212) 559-7264 DURING OFFICE HOURS.
FRED WILL GIVE YOU EXACT DIRECTIONS
TO HIS HOUSE.

CALL ANYTIME BETWEEN NOW AND APRIL 21ST. THIS INVITATION IS
FOR ALL MEMBERS AND FRIENDS, HOWEVER R.S.V.P. BY CALLING FRED
AT ONE OF THE ABOVE TELEPHONE NUMBERS.

SNACKS AND REFRESHMENTS WILL BE SERVED

ENJOY THE COMPANY OF YOUR FELLOW SOCIETY MEMBERS

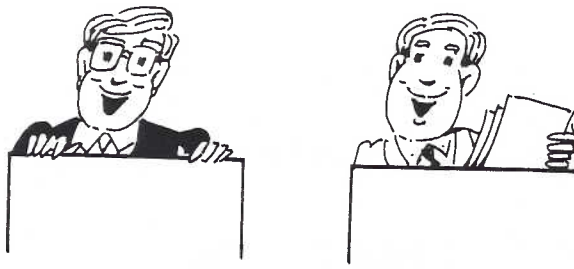
BUY - SELL - TRADE LONG ISLAND COVERS.
VARIOUS COLLECTIONS WILL BE ON DISPLAY

A VIDEO TAPE OF THE SOCIETY'S FIRST MEETING IN 1980
HELD AT THE HICKSVILLE P.O. ANNEX WILL BE SHOWN.

SEE YOU THERE!

Handwritten:
VX
Huntington
Box 112005
MIAMI
33111
FRA

NEWS FROM THE BOARD



The Board of Directors met on March 17, 1985 at Dan Knowles home. The following items were discussed and agreed to:

- o The Society will be issuing membership numbers and cards starting in August 1985 when our new fiscal year starts. Current and past members will be assigned a number based on date of entry, reinstated members will receive a number based on the date of initial membership.
 - o Membership levels were established as follows:
 - Regular - \$10 per year
 - Sustaining - \$25 per year
 - Patron - \$50 per year
 - Life - \$200
 - o Classified ads will no longer be free. Advertising space in our Journal will be made available to members and non-members alike. Advertising rates are as follows:
 - Classified Ads - \$ 1.00 for up to 30 words per insertion
 - Display Ads - \$ 2.50 1/8 of a page
 - (Camera-ready - \$ 5.00 1/4 of a page
 - copy only) - \$10.00 1/2 of a page
 - \$20.00 Full page
- Displays ads can be used for private treaty sales and auctions.
- o The Board authorized the regular exchange of our Journal with other worthy society publications. A free copy of each issue of our Journal will be sent to the American Philatelic Research Library of the APS, The Collector's Club of New York, and the Nassau County Museum Reference Library.
 - o Because we find the current name of our publication to long and cumbersome, and in order to give it an identity of its own, the Board decided to rename the Journal. Suggestions from the membership will be solicited and the new name will be voted on by those in attendance at the LIPHS Spring Meeting on April 21st. The suggested names submitted by some Board members were:
 - " Long Island Philatelist"
 - " Long Island Post Rider"
 - " Long Island Postal Historian"

A HISTORY OF THE CENTRAL ISLIP POST OFFICE

By J. Fred Rodriguez

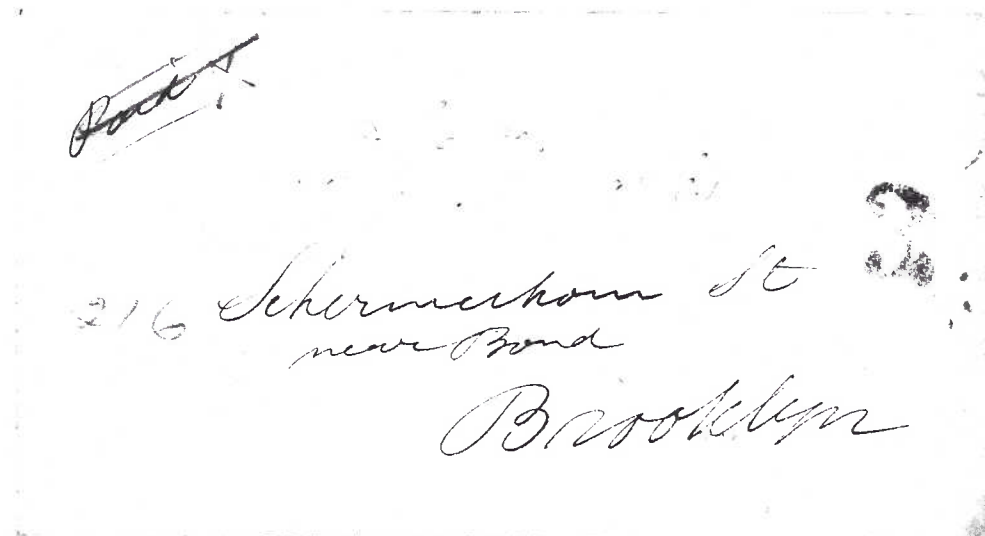
A few miles east of Brentwood, on the central line of the Long Island Railroad, lies Central Islip known in earlier days as North Islip, then as Suffolk Station and later simply as Suffolk. This area of the pine barrens was settled as a direct result of the coming of the railroad. The construction of the main line of the LIRR east of Jamaica "picked up steam" in 1838 after its abrupt interruption caused by the financial panic of 1837. By July 1842 the tracks had reached Suffolk Station which was also known as North Islip. Verne Dyson, in his HISTORY OF CENTRAL ISLIP tells us that "this little station had the importance of being the eastern terminus of the Long Island Railway for two years since the section eastward to Yaphank was not opened until June 26, 1844...In its hey-day, stage coaches rumbled out of Suffolk Station carrying passengers to both the South and the North Shores neither of which had railways for some years after the main line of the Long Island was built."

By 1857 Suffolk Station gained greater importance when the Postmaster General granted a petition for the establishment of a post office for the area. The station agent Ira L'Hommedieu was appointed the first postmaster taking effect on June 15, 1857. Postmaster L'Hommedieu was a native of Smithtown, a descendant of one of the most prominent 18th century Long Islanders, Ezra L'Hommedieu.

Mary E. Bridger, in her sketch of Central Islip history relates:

"By the united efforts of the few residents, a post office was started as Suffolk Station in 1857. Previous to that the mail came without any regular system. The nearest house to the station was Mr. Bridger's, three quarters of a mile east. Some of the people had to walk two miles to get their mail."

Mail to and from Central Islip prior to 1857 was also routed via the Islip P.O., which is about 4 miles to the south. Illustrated below is a cover with 1855 enclosures from Central Islip pre-dating the establishment of the Suffolk Station P.O.

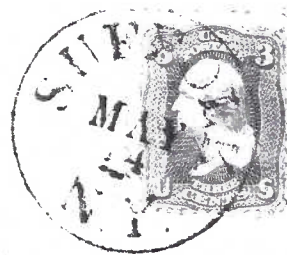


The contents of this letter shed some light on the mail problems of the day.

"A letter from you would always be more than welcome, for we have no Post Office here and the letters are taken to Islip five miles from here and it would be very uncertain when I might get them."

The cover itself is rated "3" in red but lacks the town name and date, unusual but not unheard of. Other examples of covers from other areas lacking the post office name and date have been seen by the writer. A manuscript "Paid" denotes the prepayment of the 3 cents postage rate levied on letters mailed after July 1, 1851. If sent collect the rate would have been 5 cents as stipulated in the postal regulations. On April 1, 1855 prepayment of postage became compulsory. As this letter was datelined just prior to April 1, 1855 and because it has a "3" handstamp it would seem that it was mailed from Islip, the closest post office.

When the second postmaster, Elbert S. Whitman, took office on April 22, 1859, the name of the post office was shortened to SUFFOLK. He remained in office for a little over two years. The third postmaster and station agent, William S. Hudson, was appointed on July 20, 1861. His tenure was also short for on March 25, 1863 Eleazer Smith took office. Probably it is from this period that the cover shown below was mailed.



A small ladies cover with a 32 mm cds in black tying a 3 cent 1861 stamp (Dr. Knowles Collection). Postage stamps were not supposed to be cancelled with the town postmark but rather with a separate killer which sometimes was attached in duplex format to the postmark. However, if the postmaster didn't have a separate killer he could use the postmark as a canceller if black india ink was used. But even then you can find exceptions to this rule.

Here is a cover with an 1867 grill stamp used circa 1870 (Scott #94). A small 24 mm black circle denotes the cover as originating from Suffolk, N.Y. A concentric circles killer obliterated the stamp and barely ties it to this cover addressed to St. Augustine, Florida.



A few years after the above cover was posted at the Suffolk P.O. the post office was moved closer to the center of town. We quote from Verne Dyson's history:

"For thirty years after the Long Island Railroad was built through this region, Central Islip had no depot or post office in the central part of the village, but was served by Suffolk Station on the western border of the community. In 1873, George K. Hubbs, deeded land to the railroad for a station house at the present location and it was constructed. The post office and other facilities were transferred from Suffolk Station on January 7, 1874."

When Eleazer Smith turned over the contents of the Suffolk Post Office to George K. Hubbs, the latter drafted a detailed account of the items received. That account has been preserved and first appeared in the April 1969 issue of the Long Island Forum. The list of post office items follows in the next page.

"Received from Eleazer Smith the following described articles being the property and effects belonging to the Post Office Dept. in use at the late post office of Suffolk, N.Y.

- 1 Mail key No. 12543
- 34 official envelopes
- 29 official stamps
- 7 registry seals
- 6 registered package envelopes
- blank receipts for reg. packages
- accounts current of P.O. to date
- blanks for regular business of office
- all books and pamphlets containing laws and instructions of P.O. Dept. sent to Suffolk Post Office to date
- 1 postal scale
- John Eldertain (Mail Carrier) contract
- blank registers of arrivals and departures of mail
- mail bags and mail
- 4 locks

Signed George K. Hubbs"

Quite an interesting array of post office paraphernalia which by regulations had to be passed on to the succeeding postmaster. Notice that the postmarking devices and cancelers were not returned as the new post office would have a new name (Central Islip). Also, they were probably the property of Eleazer Smith as it was often the case for very small post offices. The P.O. Dept. only supplied standard handstamps to the bigger offices which provided greater revenues to the Department. Those small fourth class post offices had to fend for themselves. Some of them didn't make enough to justify the expense of a postmark, others made crude cork cancellers themselves; that's one of the reason for the many manuscript postmarks found on covers.

After 1874 the old railway depot and post office degenerated into a road house, marked on old maps as the Smith Hotel, a popular saloon in the area. The former postmaster was known as Captain Smith settling down in Central Islip after many years spent at sea.

The newly established Central Islip Post Office opened for business on January 7, 1874 with its 10 lock boxes fully subscribed. The village pioneer settler, George Kasson Hubbs was its first postmaster as well as the first Central Islip station agent. Mr. Hubbs was already a citizen of distinction in Smithtown before he settled in Central Islip. In 1848 he purchased about 940 acres which comprised the northern part of the present village of Central Islip. He cleared a large portion of that track and sold various plots as part of a development for city people. He was a close friend of Edgar F. Peck, the pioneer developer of the central pine barrens and the founder of Lakeland, just east of Central Islip. A future article to appear in this Journal will record the history of the Lakeland P.O.

Mr. Hubb's Central Islip of 1874 was described by historian Paul Bailey in his History of Long Island (1949) Vol. 2.

"In 1874 most of this hamlet lay on the north side of the railroad and contained about 50 houses. At this time Suffolk Station, located where Islip Avenue crosses the tracks, was moved to the present site. At that time the chief occupation of the people was farming."

Another sketch of the village can be found in the Historical and Descriptive Sketches of Suffolk County by Richard M. Bayles (1874). It reads: *"About one mile further east from Suffolk Station and mostly on the north of the railroad lies the village of Central Islip, another modern settlement which during a few years past has made considerable growth. It contains two churches, a store, school, burying-ground, and about 50 houses. The inhabitants are mostly settlers from abroad."* About 110 people lived in Central Islip at this time, many of them of Irish decent.

George K. Hubbs remained as postmaster for four years. He suffered a stroke on July 1, 1878 and died five years later. George Saddington succeeded him as station agent on July 15, 1878 and became postmaster soon thereafter receiving his appointment on October 18, 1878. Saddington, an early resident of the village, was a native of England where he was born on February 2, 1850. He served as postmaster of Central Islip during two different periods - October 18, 1878 to February 4, 1886 and from July 16, 1894 to June 21, 1898.

It is not uncommon to see a particular postmaster serve two or more times at different periods of time. A postmaster's appointment was often linked to the political party in power. A change of administration most always meant a new postmaster in town.

The next postmaster at Central Islip was Henry Holmes, an Englishman who moved to the village in 1858. He established the first general store in the village soon thereafter. A corner of that first general store became the Central Islip Post Office on February 4, 1886.

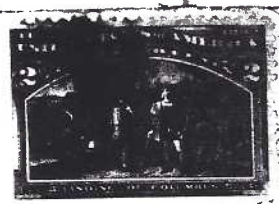
Postmaster Holmes relinquished his office on May 22, 1889 to another storeowner, Mr. George Henry Hubbs, son of Central Islip's first postmaster. Like his father, George H. was a successful businessman and a civic-minded citizen. He served as postmaster under four different Republican Presidents during his two tenures as postmaster. His first stint ran from May 22, 1889 to July 16, 1894 when George Saddington regained the post. After Pres. McKinley took office, George H. Hubbs was reappointed postmaster effective on June 21, 1898. Although the post office gradually expanded it nevertheless remained at the corner store located on Suffolk Ave. and Wheeler Road.

Illustrated below is a beautiful cover posted at Central Islip a few months after George H. Hubbs took office for the second time. It is a fine example of the Columbian commemorative issues of 1892/93. A Scott's #U348 1 cent envelope deep blue on white and a 1 cent deep blue stamp of the same issue (Scott #230) are used to pay the 2c first class rate. A purplish-black 30 mm duplex cds CENTRAL ISLIP/SEP/7/1898 N.Y. with an oval killer ties the stamp.



In the 1909 Official Register of the U.S., Vol. II, George H. Hubb's compensation as PM is listed at \$1300, a considerable amount as the post office was only an adjunct to his general store. Miss Annie R. White is listed as a clerk, his only help, at a salary of \$144 for the year.

Shown in the next page is another cover used during Hubb's tenure. It is a registered cover mailed from Central Islip. A 10 cent D. Webster stamp, Series of 1902-03 (Scott #307) is tied by a steel duplex 28 mm cds CENTRAL ISLIP/APR/19/4 PM/1905/N.Y. with an oval killer tying the stamp.



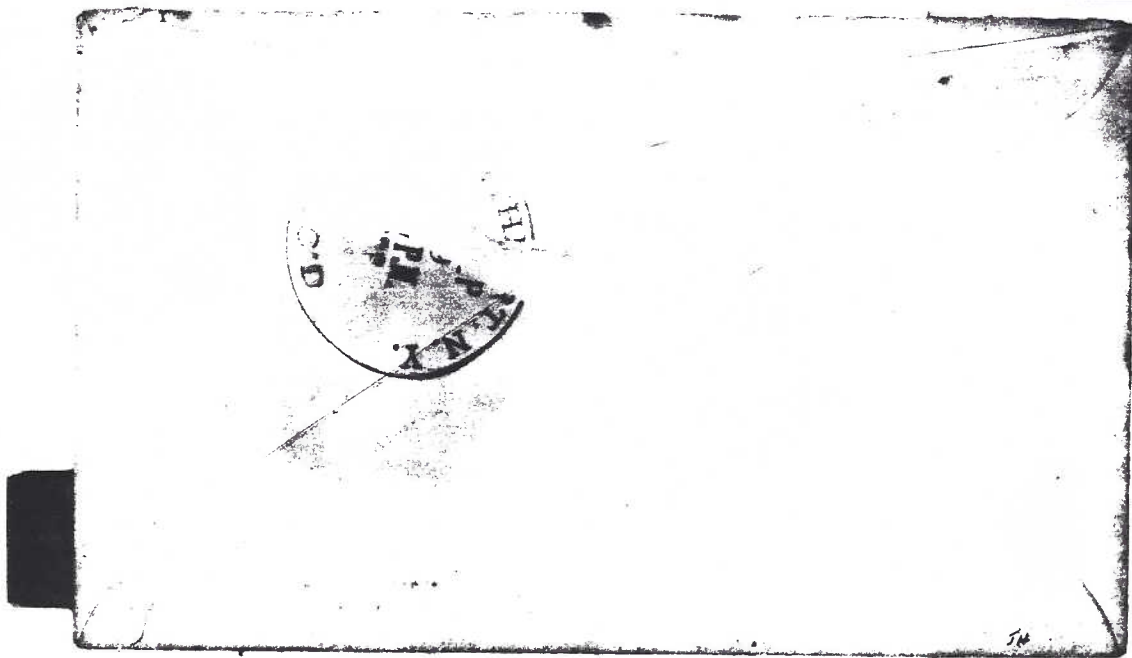
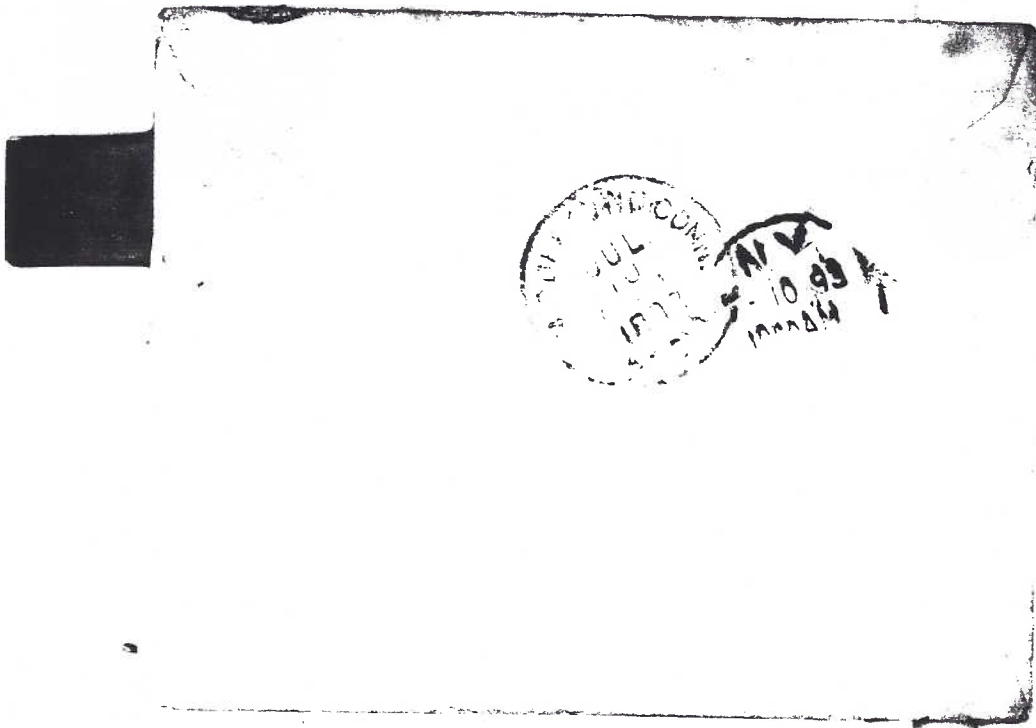
Mr. J. M. ...

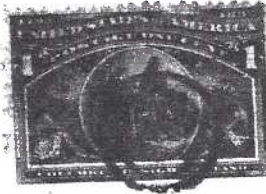
...

...



ORIGINAL NOT TONED
This is FROM heat of COPY MACHINE





T. D. HUNTING,

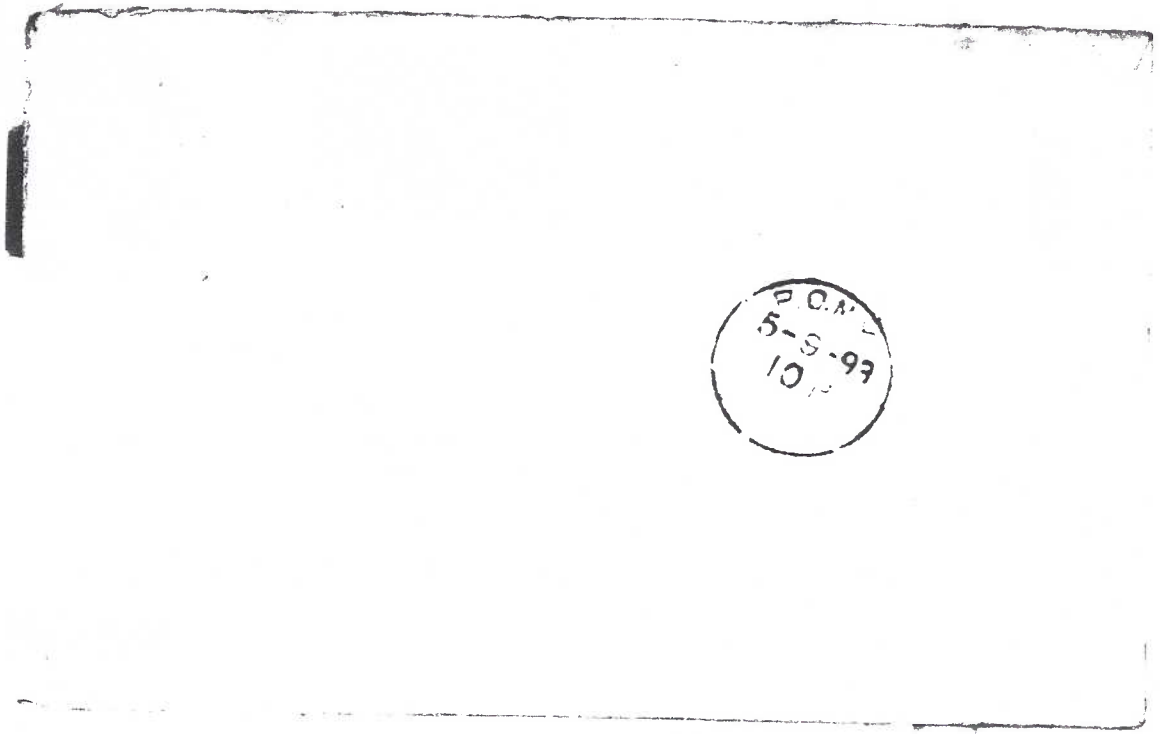
45 DEY STREET.

NEW YORK.

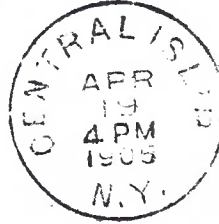
LOCK BOX 422
Northport, N.



W. B. CODLING,
COURT REPORTER & LAWYER,
Northport, N. Y.



EMIL HOCKER,
SMITHTOWN BRANCH,
NEW YORK.



Mr. E. B. Jordan

O.C. Building

27231

Brooklyn

55274

NY

JFR 10

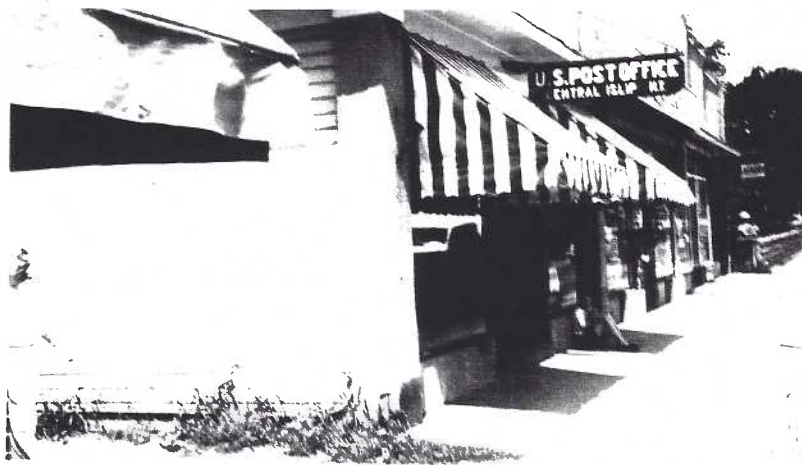
George H. Hubbs remained in charge of the mails until 1914. Frank T. Kelly took over as the postmaster, the post office returning to its old home for a short while as Mr. Kelly was also the station agent. His appointment took effect on January 27, 1914. He remained station agent until March 1914, the last of the "lamplighters", and assumed the responsibilities of postmaster on a full time basis. He remained in office until 1923.

In 1923 the post office was moved to Carleton Avenue for the general store of old, no longer in the center of town, was fast becoming a bike and auto shop. At this same time the Central Islip Post Office became the domain of Margaret R. Mulligan, taking charge as acting postmistress on June 16, 1923. She got her permanent appointment on January 8, 1924. She remained in office for 17 years. A fine article has just been written by Robert S. Dalton and Diane DeBuois, publishers of P.S. and owners of 'aGatherin'. It deals with the historical role of women in the postal service.

James O'Doherty took over as acting postmaster on May 22, 1936 becoming the regular postmaster on February 4, 1937. The slightly blurred photograph shown in the next page is of the post office which Mr. O'Doherty managed.

Circa 1942

CENTRAL ISLIP, L.I., N.Y.



Central Islip's progressive builder and developer, Mr. Harold McGowan, built a beautifully designed colonial post office building in 1946. He built it on a hunch in that he didn't have a mandate from the Post Office Dept. to do it. When the building was finished, he contacted the POD in Jamaica and Washington and proposed that they change the location of the local post office. His proposal was accepted and the spacious new post office was occupied soon thereafter. A year after the move, Anne Zaloudek became acting postmistress. She remained in that temporary post from November 17, 1948 until a permanent office holder was selected.

On August 22, 1950 John J. McTiernan was named postmaster at Central Islip, a post he held until 1961. Under his tenure a Post Office Sub-station, designated as Central Islip Station 1, was opened at the State Hospital, already a well known institution on Long Island. That sub-station opened for business on November 2, 1953. Mrs. Phyllis Fagan took charge of the sub-station handling incoming and outgoing mail, stamps, money orders, registered mail and parcel post. Mail was not distributed to individuals at the sub-station. It did not have lockboxes, but rather mail was sent in bags to the various hospital buildings where it was distributed.

On May 24, 1961 George O'Leary became acting postmaster assuming charge a few days before. About this time the Central Islip P.O. became designated a First Class office. He was confirmed postmaster on November 11, 1963, received his commission on Dec. 2, 1963 and assumed the role of Postmaster at Central Islip on January 3, 1964. At this time the post office moved to a more permanent brick structure on East Suffolk Avenue which is still in use today. Mr. Alfred Fassler took over for Postmaster O'Leary on May 5, 1979. Mr. Fassler later moved to the Huntington P.O. as postmaster and recently left that post to take charge as Manager of Fleet Operations at the Hicksville Post Office.

When Postmaster Fassler left Central Islip he was replaced by the current postmaster, Mr. Vincent Franchi who was appointed in April of 1982.

REFERENCES

Bailey, Paul, Editor Long Island A History of Two Great Counties Nassau and Suffolk, 1949.

Bayles, Richard M., Historical and Descriptive Sketches of Suffolk County, 1874

Dyson, Verne THE HISTORY OF CENTRAL ISLIP, 1954.

Fassler, Alfred, former Central Islip Postmaster, telephone interview.

Long Island Forum, Vol. 32 No. 4, April 1969.

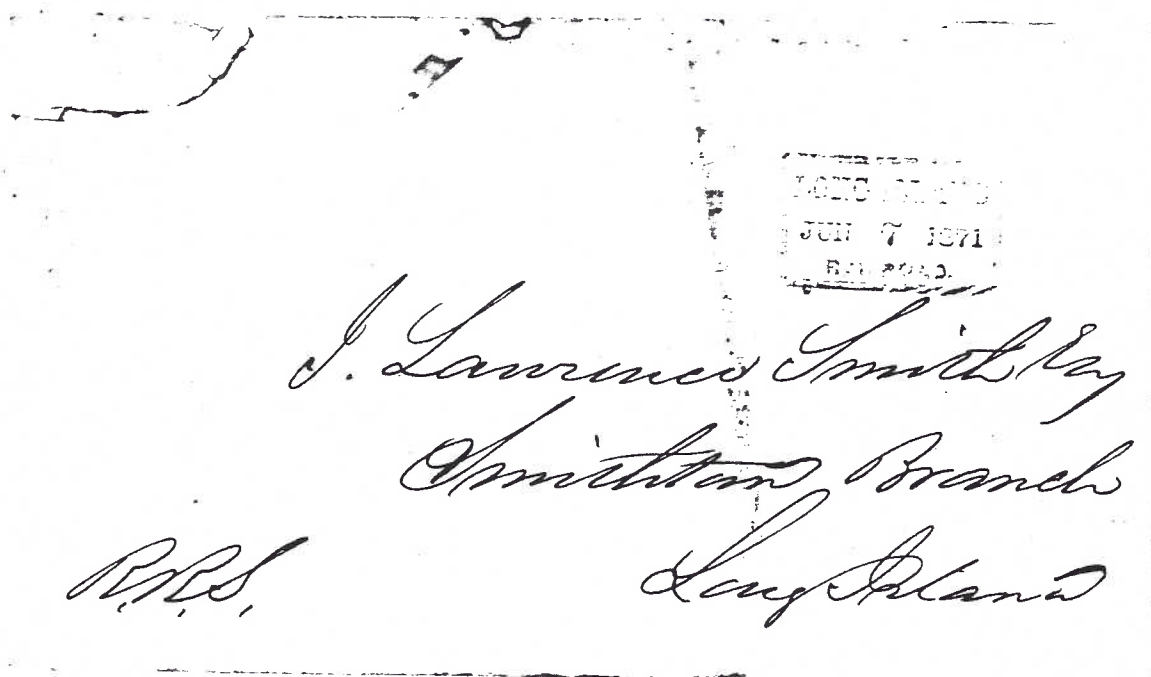
Official Register of the United States Volume II The Postal Service, 1909.

Pulling, Anne F., R.S.M., CENTRAL ISLIP MY HOME TOWN, 1976.

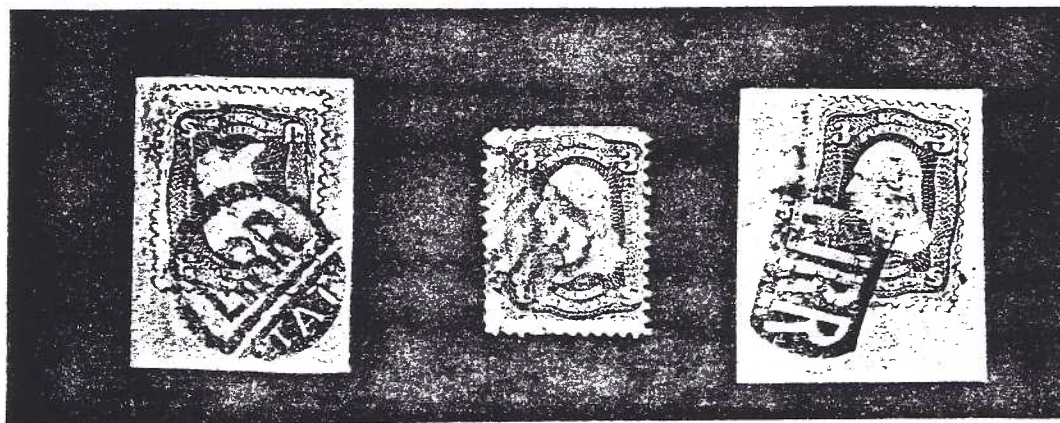
 * A SAMPLER OF LONG ISLAND RAILROAD COVERS *
 * Part III - Some Additional Examples *
 * Compiled by J. Fred Rodriguez *

This last installment of the Sampler illustrates some additional covers sent in by members Stannard, Stollnitz, Price and Rodriguez. Some additional post card views of railroad depots and trains are included to give us a look at the Long Island of old.

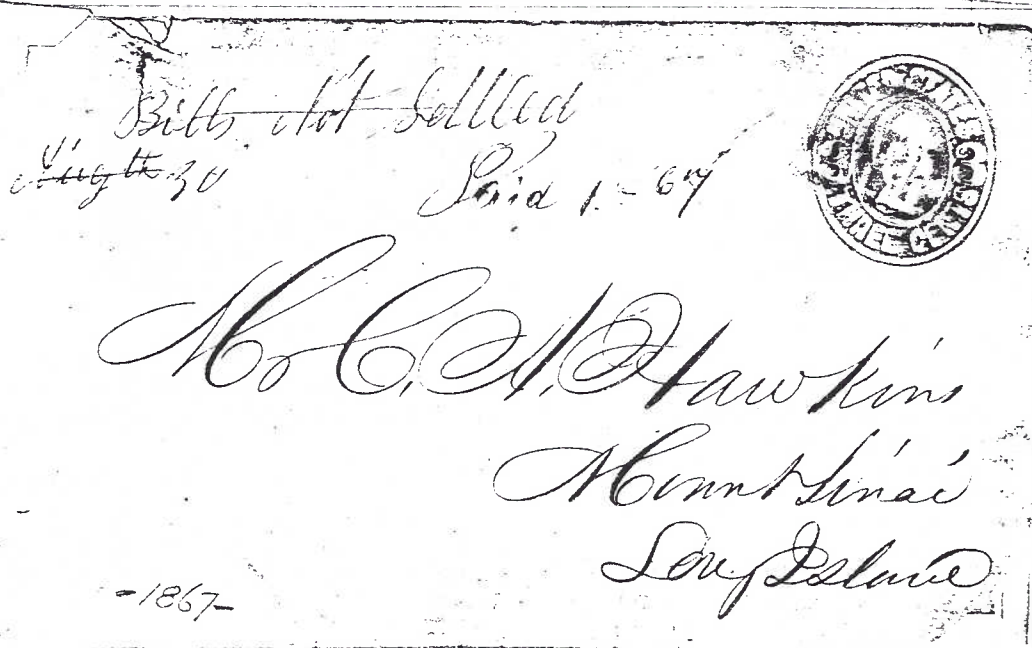
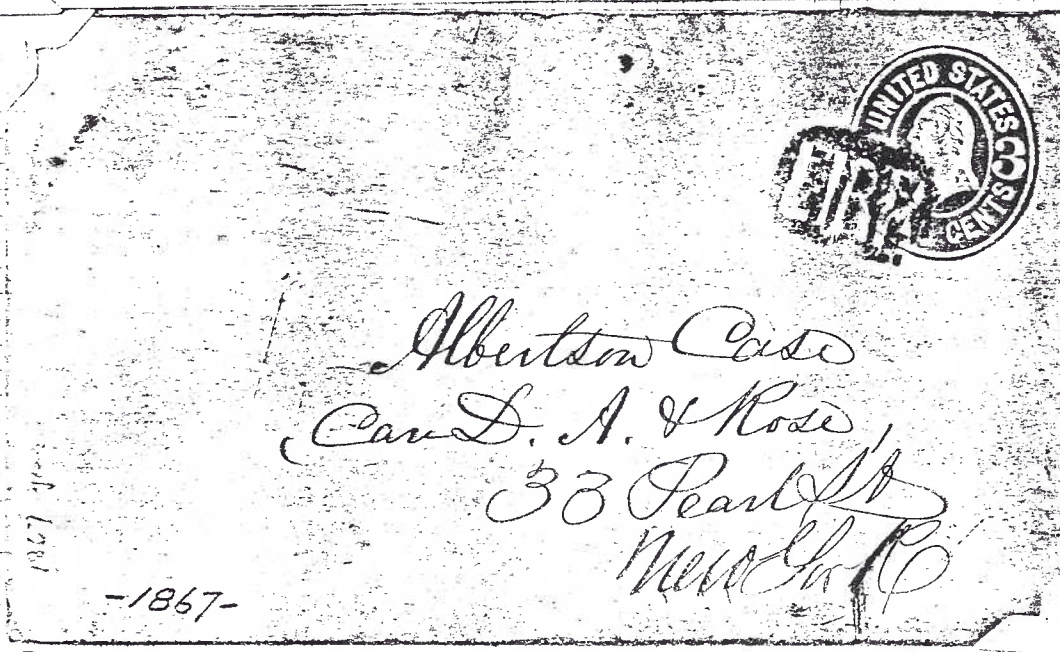
The cover depicted below has an unusual 29mm x 17mm rectangular box marking in black - LONG ISLAND/JUN 7 1871/RAILROAD on cover to Smithtown Branch. There is no postage stamp on the cover; possibly this cover was handled outside of the mails although unlikely. Has any one seen this marking before? Is it a postal marking or a ticket marking from the LIRR?



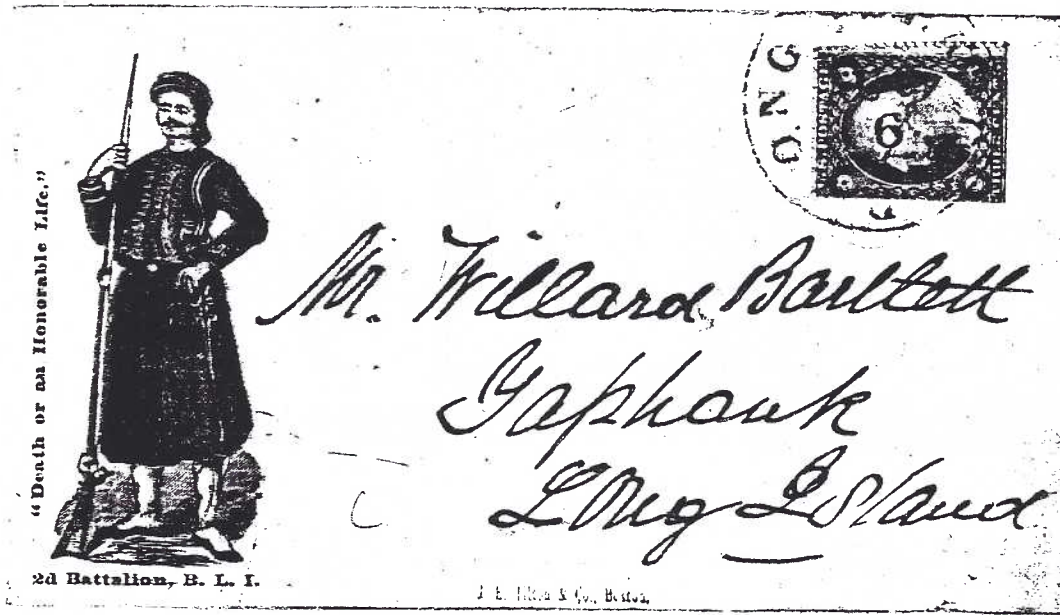
An album page showing early Long Island Railroad Route Agent Markings used on cover in 1867 and on piece.



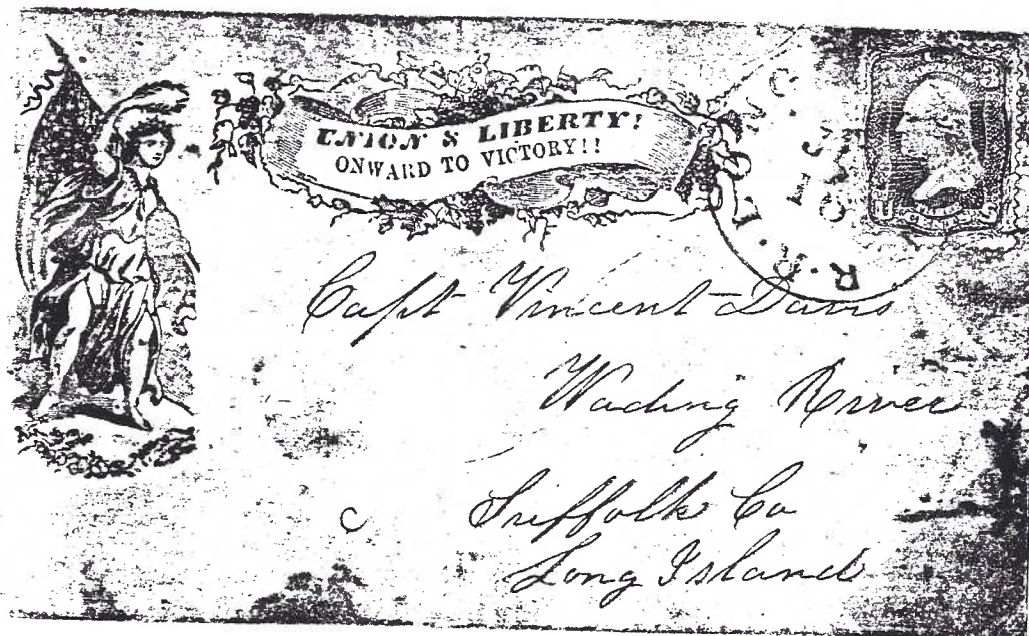
RAILROAD ROUTE AGENT'S CANCELLATIONS



TWO LONG ISLAND RAILROAD COVERS ON CIVIL WAR PATRIOTIC COVERS



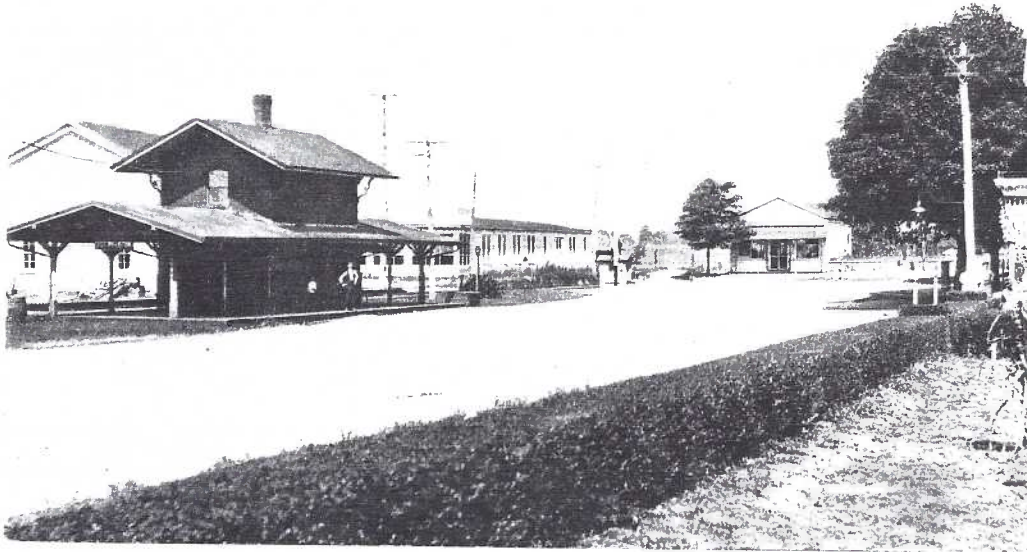
A rare L.I. Regiment patriotic cover with the caption "Death or an Honorable Life". A balloon LIRR cds partly off cover ties a Scott's No. 26 to Yaphank, Long Island.



Another rare Civil War Patriotic cover (similar to Walcott #2272) with a Long Island Railroad marking (Towle #112-B-1). This one addressed to Capt. Vincent Davis in Wading River.

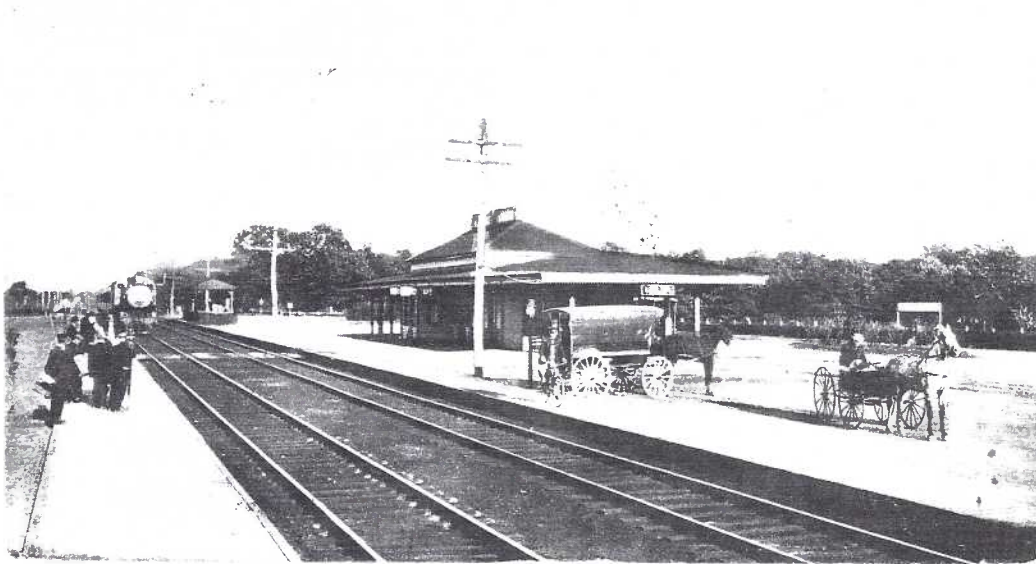
Two handcolored post card views of LIRR depots

R. R. Station, East Williston, L. I.



Shown is the nice red brick depot at East Williston in 1909.

The R. R. Station, Islip, L. I.



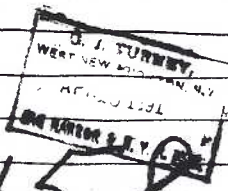

The Islip Station in 1910

A reduced photocopy of a U.S.P.O.D. Registered Package mailed on April 16, 1898 from GOOD GROUND to the Riverhead P.O. The reversed of the package envelope was reserved for recording handling in transit. When the registered letters were given to the RPO clerk he marked them to denote receipt and handling. That clerk used his own postmarking device, a rectangular box stamp. This handstamp was shown on page 24 of the LIPHS Journal WHOLE No. 10 (Fall 1984). This example corrects the spelling of the agent's name in the handstamp previously reported. The rectangular marking measures 42mm x 25mm and is in black ink.

G. J. TURNEY,
WEST NEW BRIGHTON, N.Y.
APR 16 1891
SAG HARBOR & N.Y. R.P.O.

The package was received at the New York City Post Office Registry Division and then delivered to Riverhead - an awkward routing but apparently the only one available then.

RECORD OF TRANSIT.

Condition. <small>State if not good.</small>	Signature. <small>By Whom Received and Date.</small>
	 158 2/6 

NEW INSTRUCTIONS.

To facilitate tracing, a complete record must be made by every postal officer handling this package, as set forth in Section 1081, Page 394 of the Regulations.

Should this package become damaged, it must be placed in a new Registered Package Envelope at the post office where the injury occurs, or when damaged in the hands of a Postal Clerk, at the post office at the terminus of his route.

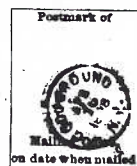
The original Registered Package Envelope must not be removed, but, before enclosure in the new one, must be endorsed with a certificate stating its exact condition, to be signed by the Postmaster and the Postal Clerk, to whom delivered, or from whom received. The new Envelope must bear the address and registered number of the old one, and the postmark of the office at which the package is re-enveloped. The fact of re-enclosure must be noted on the records of transit.

Receipts must be given, on delivery of envelopes, or by next mail, which receipts should bear the postmark of date of return.—See Sections 1083 and 1075 of the Regulations.

Failure to comply with above instructions will be sufficient cause for removal.

U. S. P. O. D. REGISTERED PACKAGE.

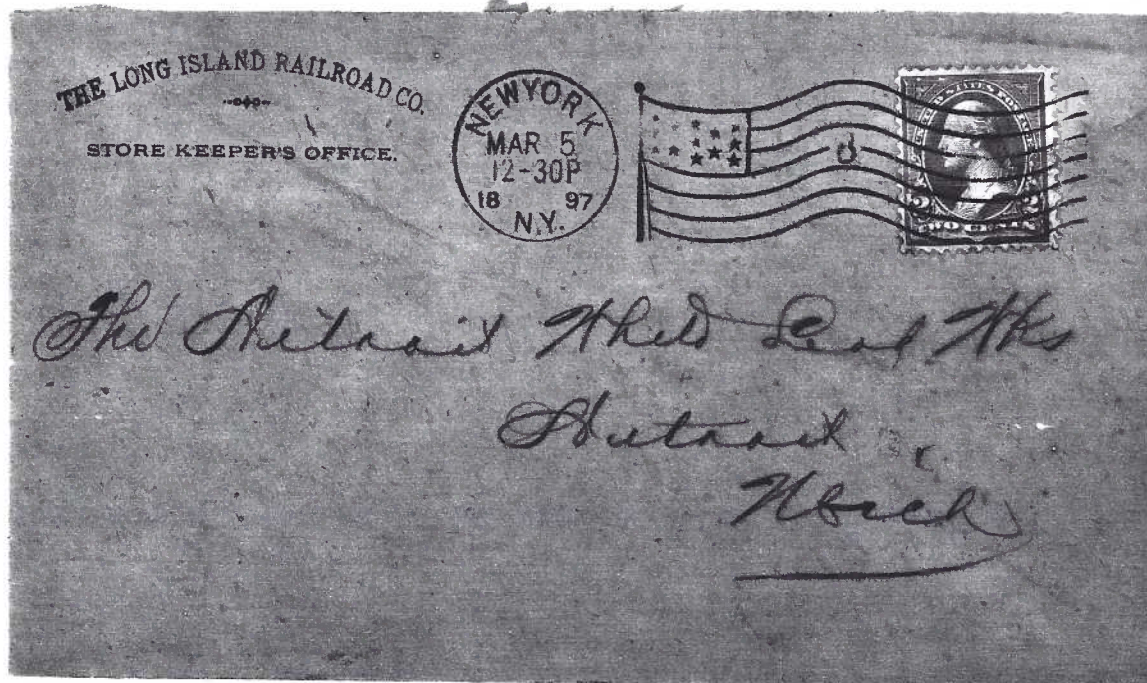
IF BE SURE TO SEAL THIS PACKAGE SECURELY, AND TO POSTMARK IT PLAINLY.
Fourth-class P.M. must write in ink, in the brackets, on each envelope, the names of their Post-Offices, whenever they receive a new supply.



POSTMASTER AT Riverhead
COUNTY OF Suffolk
STATE OF N.Y.

(No. 7-2-7)

STATE OF



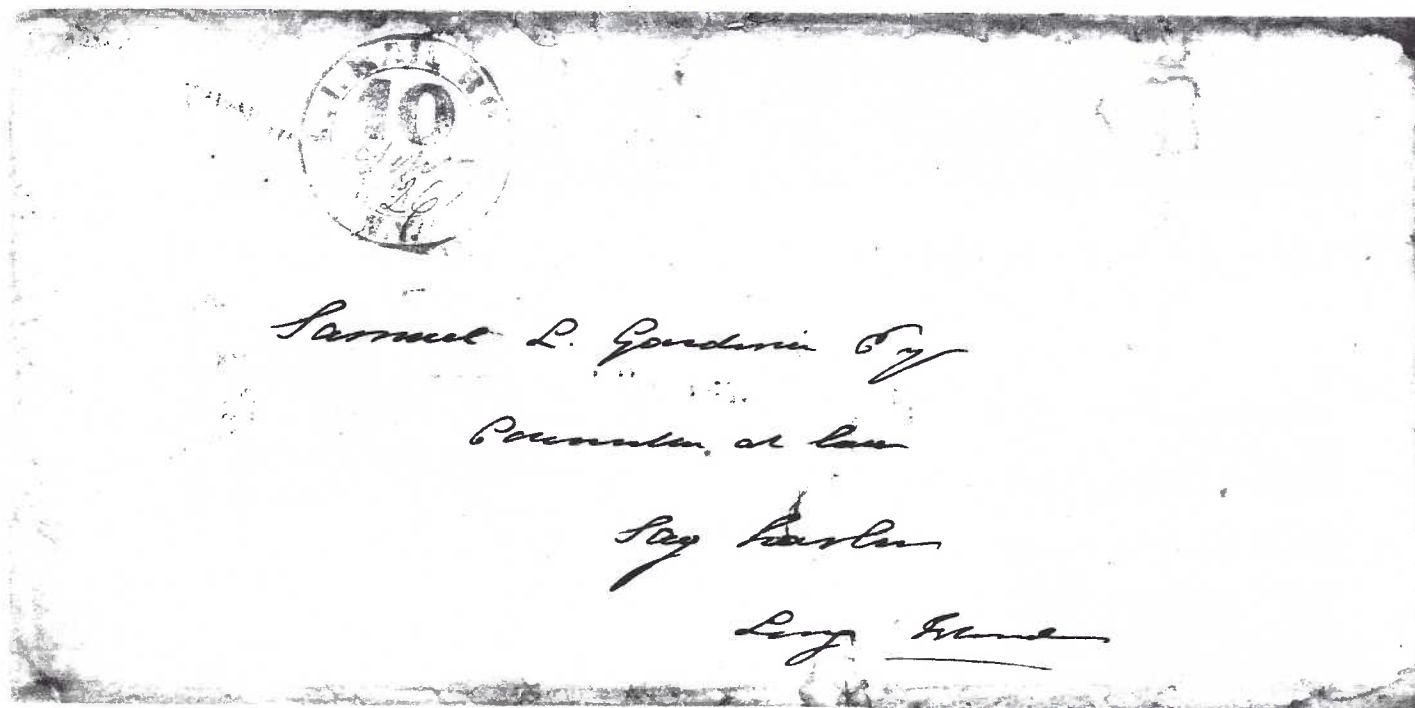
A corner card from the Long Island Railroad Co. Store Keeper's Office.



ENCLAVE ALBANY
70 Stamford Road
Valhalla, New York

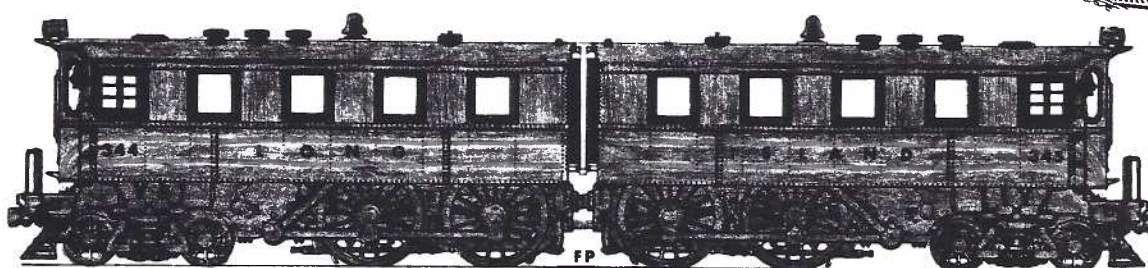
A First Day Cover from 1953 with a N.Y. & FAR ROCK. R.P.O. postmark.

A L.I. RAIL ROAD (Large "10") double circle strike on a wrapper to Sag Harbor, circa 1850. A very nice strike of this rare marking, listed as L7c by Remele and #112-A-3 by Towle. The latter gives it a rarity rating of IX, i.e. very rare. This cover was purchased at the ASDA Interpex Show at the Garden a few weeks ago, a cover that the lucky collector thought he would never see.

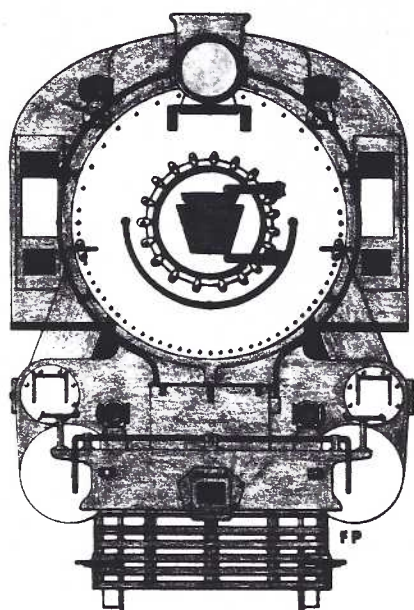


The Long Island Stamp Dealer's Association (LISDA) stamp show in October 1982 promoted a salute to the Long Island Railroad with a special LISDA STATION cancellation. These two covers were purchased at that show, each a limited edition of 100 and both very colorful.


**Long Island
 Rail Road**



DD-1 class 2-B-B+2 electric

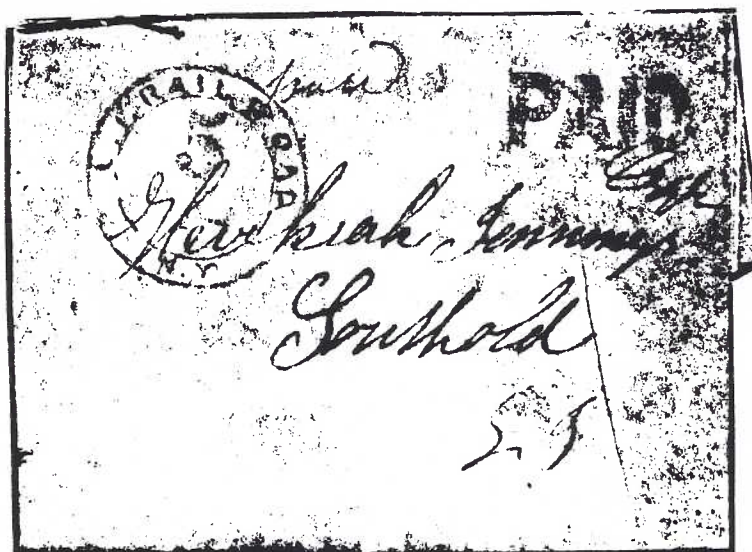


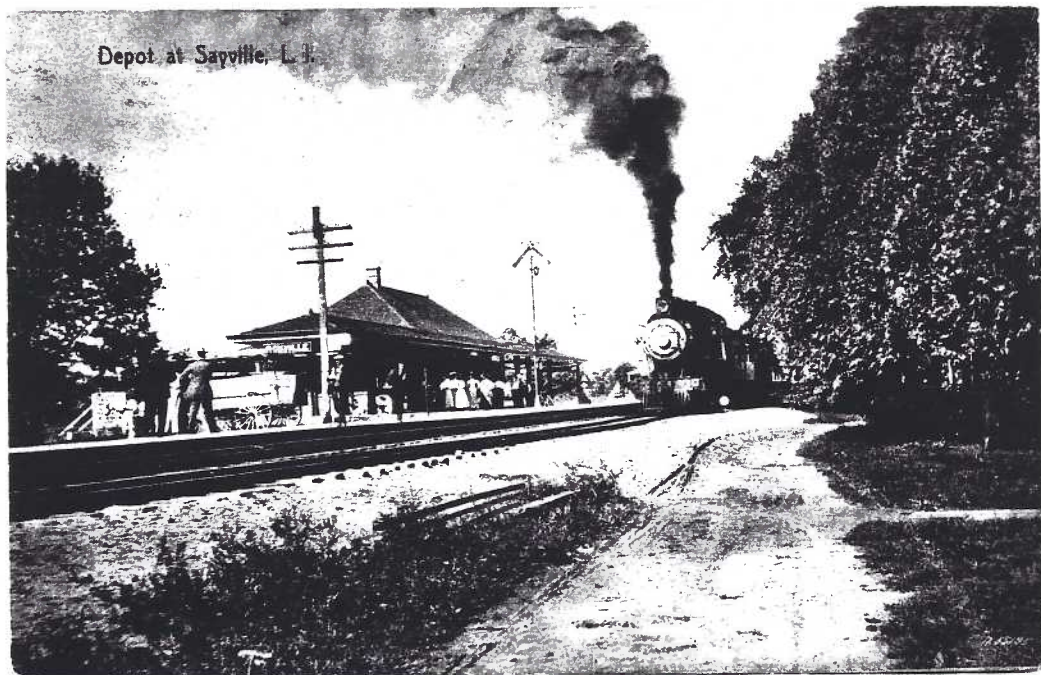
G-5 class 4-6-0



**Long Island
 Rail Road**

The cover shown below first appeared in the LIPHS Journal No. 1 Summer 1980, part of the article entitled "A FISTFUL OF COVERS" by Karl Menger. It is datelined Brooklyn, Aug. 1, 1846. The large red PAID is unique in conjunction with the railroad marking. According to Mr. Menger "a similar PAID is known used with a Yaphank town marking. There is a manuscript pencil "paid" to the right of the double circle which has been strengthened in the reproduction here to bring it out. The Yaphank PAID is used in the 1851-5 period. With the pencil "Paid" probably applied in or near Brooklyn, this suggests the route agent didn't apply the railroad marking until near Yaphank."





A 1910 post card view of the Sayville Railroad Station showing a steam locomotive "blowing its stack".



This is the Richmond Hill Depot.

A nice real photo view of the Richmond Hill Depot

PAN AM AND LONG ISLAND

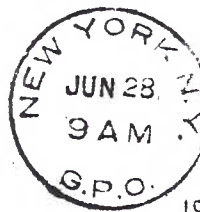
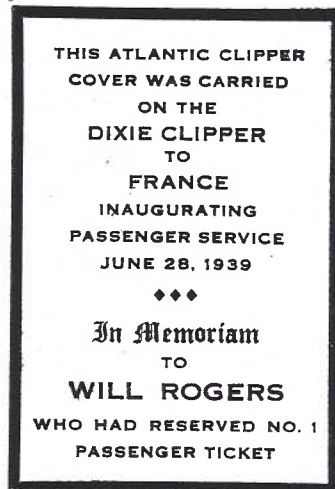
By Robert S. Miller

The "Dixie Clipper" a Boeing B-314 became the first commercial airliner to carry passengers across the Atlantic Ocean when it left Port Washington, New York on June 28, 1939 for Marseilles, France. The flight under the command of Captain R.O.D. Sullivan had a crew of 12 and carried 22 passengers on the 4706 mile flight.

When the second World War ended the "Dixie Clipper" and three of her sister ships had traveled 11,000,000 miles, crossed the Atlantic 2,122 times, carried 80,000 passengers, 6,000,000 pounds of express, and 5,000,000 pounds of mail. The DC-4 made these flying boats obsolete and it was ironic that the "Dixie Clipper" which was the last of the transatlantic flying boats would make its last flight for Pan Am on its shortest run.

Captain William Winston flew the "Dixie Clipper" from La Guardia Field to Floyd Bennet where after the 17 minute flight it was turned over to the Navy.

* * *



1939

To

Theodore Champion,
13 Rue Drouot,
Paris, France.



A Commemorative First Flight Air Mail cover of the first transatlantic flight of June 28, 1939. Scott's #C-24, the 30 cent dull blue Air Mail stamp issued in May 16, 1939 is tied to the cover by a steel duplex handstamp from the General Post Office in New York. A machine receiving postmark dated June 30, 1939 is on the back of the cover. (Collection of Robert S. Miller)

LONG ISLAND POST OFFICES - PART IV - SUFFOLK COUNTY

By John Price and J. Fred Rodriguez

This installment deals exclusively with the Town of Babylon. Some of the post offices of this town are shown in turn of the century post cards and photos. Others are shown in photos taken during the 1940's.

We envision covering Suffolk County through 1987 -we have over 125 post offices to illustrate. However, sometime this year or in early 1986 we will take a respite and will illustrate with covers and cards some additional Queens County post offices, some really outstanding shots of the quaint post offices buildings of 80 years ago.

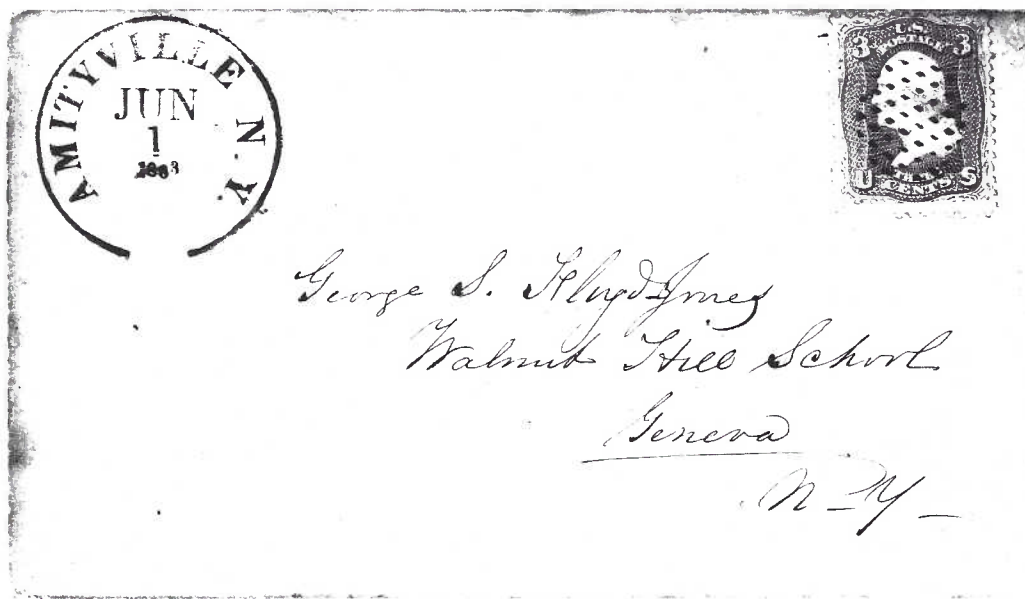
THE SEAL OF THE TOWN OF BABYLON



The American Eagle in the center of the Seal is presumably a symbol of patriotic interest and zeal. The clam, oyster, and fish represent prominent local industries.



A real photo post card of the Amityville Post Office in 1910 located at the Triangle Building still standing on Broadway. This post office was established on April 15, 1850; the second p.o. in the Town of Babylon. James H. Porter was the first postmaster.



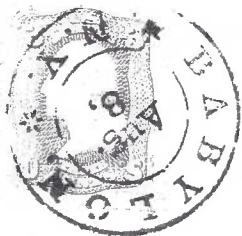
A bold June 1, 1863 32mm. cds with a black circle of diamonds fancy cancel on a 3c 1861 stamp.

1908 picture post card of the BABYLON post office. This post office began as HUNTINGTON SOUTH on Sept. 7, 1802, the first p.o. in Babylon Town. It changed names to BABYLON on May 6, 1830; then to SEASIDE on Nov. 5, 1867; and back to BABYLON on January 10, 1868.



MAIN ST, SHOWING P. O., BABYLON, L. I.

A striking BABYLON double circle date stamp with fluerons tying a 3c 1861 stamp on yellow cover.



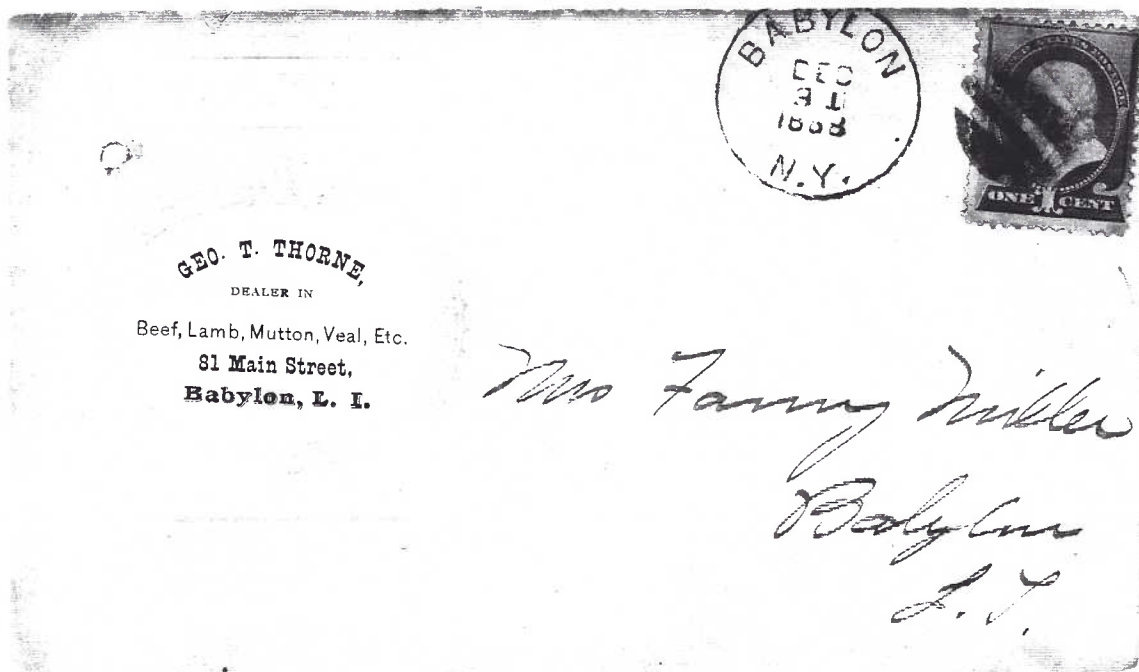
*Mrs. John C. Chase
Brooklyn
Canton*

Circa 1941

BABYLON, L.I., N.Y.



BABYLON POST OFFICE in 1941

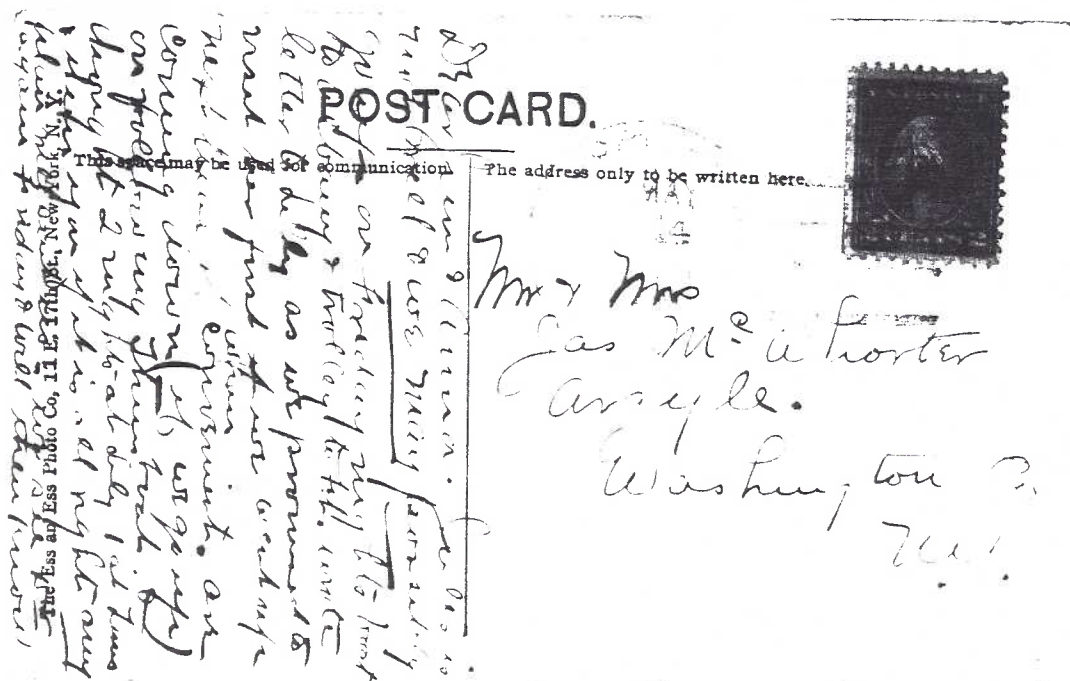


Nice Babylon pink corner card from 1888 mailed within the village at the 1c drop rate.



Post Office, Copiague, L. I.

H.O. Korten post card view of the COPIAGUE post office in 1910 showing a street car in front of the p.o. building. Korten's car is on the left, his 1910 runabout appearing more often than not in his photographs.

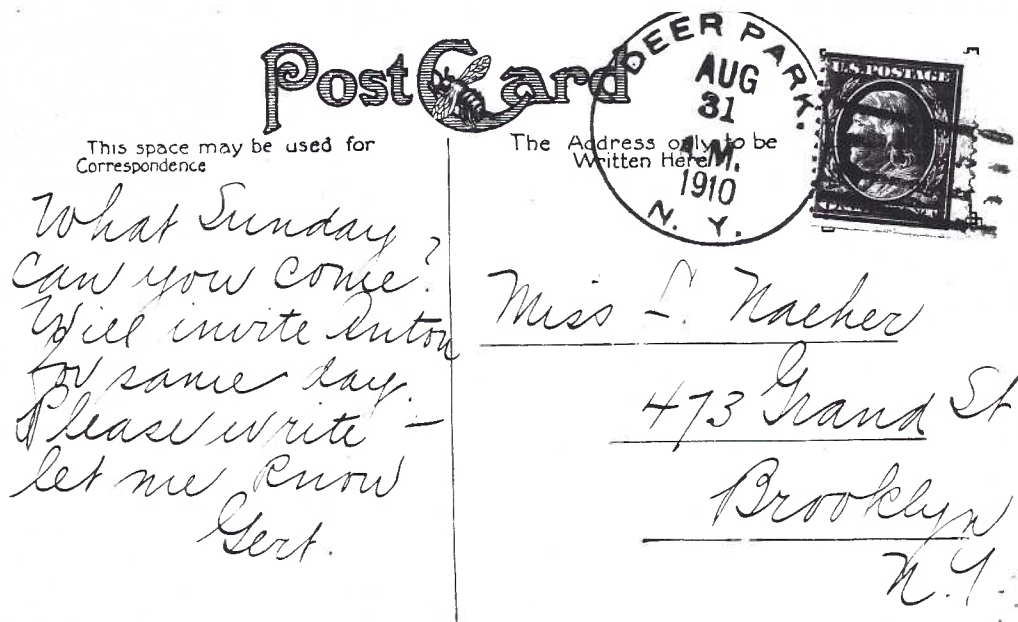


1919 COPIAGUE card on picture post card. This post office was established on Feb. 28, 1903, with Joseph C. Howell as postmaster.

1930's scene of the DEER PARK post office. This p.o. was established on March 8, 1851, the third p.o. within Babylon Town, with Nathan E. Bassett as first postmaster. It was discontinued on Aug. 28, 1872 when the Brentwood P.O. serviced the area. It was reestablished a year later, on July 1, 1873.

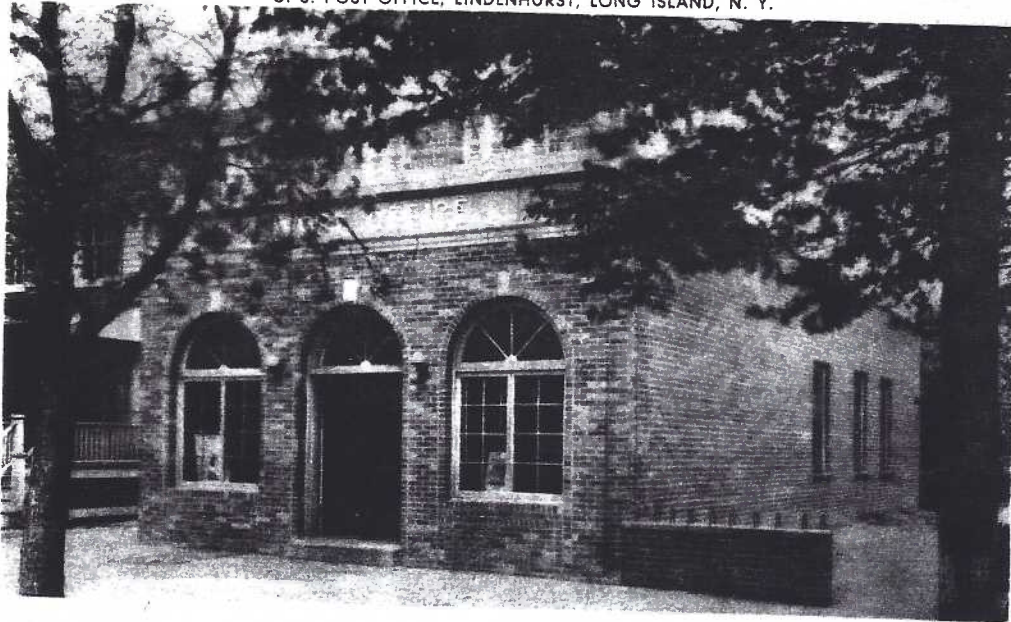


GENERAL STORE AND POST OFFICE, DEER PARK, L. I.



Bright violet cds of Deer Park on 1910 post card view of Deer Park Terrace, a scarce view of this area.

U. S. POST OFFICE, LINDENHURST, LONG ISLAND, N. Y.



The Lindenhurst P.O. on a circa 1940 post card. This community was founded by German immigrants who named their new home "Breslau" in remembrance of Breslau, Germany. The Breslau post office was established on Dec. 22, 1870 changing to LINDENHURST on June 24, 1891

Vulcanite Manufacturing Co.
LINDENHURST, L. I.



Mr. H. E. Metzger,

517 Broadway, N. Y. City.

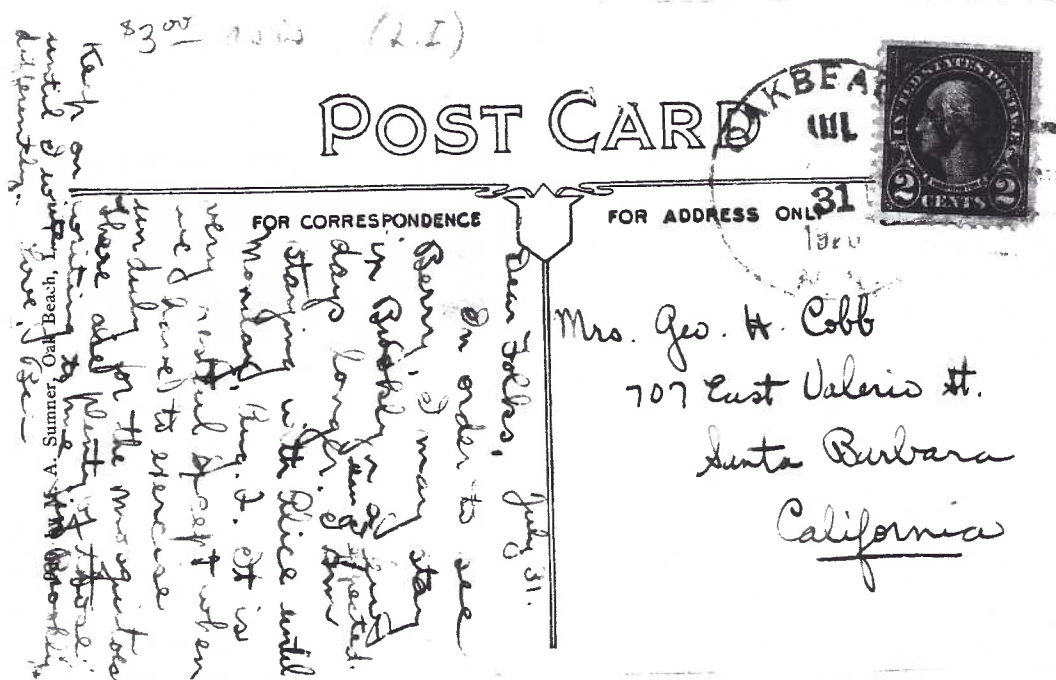
A black 1894 cds from LINDENHURST on a corner card entire from the Vulcanite Manufacturing Co. The cover is the two cent Columbian Exposition commemorative entire issued in 1892.

GENERAL STORE AND POST OFFICE,

OAK BEACH, NEW YORK



OAK BEACH, one of the many summer post offices on the Great So. Bay



A post card bearing a 1926 OAKBEACH handstamp cancellation. The post office was originally established on Feb. 6, 1895 ceasing operations on June 30, 1896. It was reestablished on Sept. 8, 1900 and continued until May 31, 1958 when it became a Station of the Babylon P.O.

Another summer post office on the Great So. Bay - WEST GILGO BEACH.
It was established on May 22, 1941 at the home of Mrs. Cora S. Griffin. On June 14, 1958 it became a Station of the Babylon P.O.

Circa 1941

WEST GILGO BEACH, L.I., N.Y.



*Helene R. Rinehart,
Postmaster
from June 1948
to June 1958*



R. N. Carter
79 Milk St., Room 1308
Boston 9, Mass.

A Last Day Cover for the West Gilgo Beach P.O. signed by Postmistress Helene R. Rinehart who served the community for 10 years.



Interior view of the General Store and Post Office at WYANDANCH, about 1910, Anthony Kirchner, proprietor and postmaster. This post office began as WEST DEER PARK on Aug. 23, 1875 and was housed at the railroad depot. The first postmaster, George W. Conklin was also the station master. It changed to Wyandance on Dec. 20, 1888.



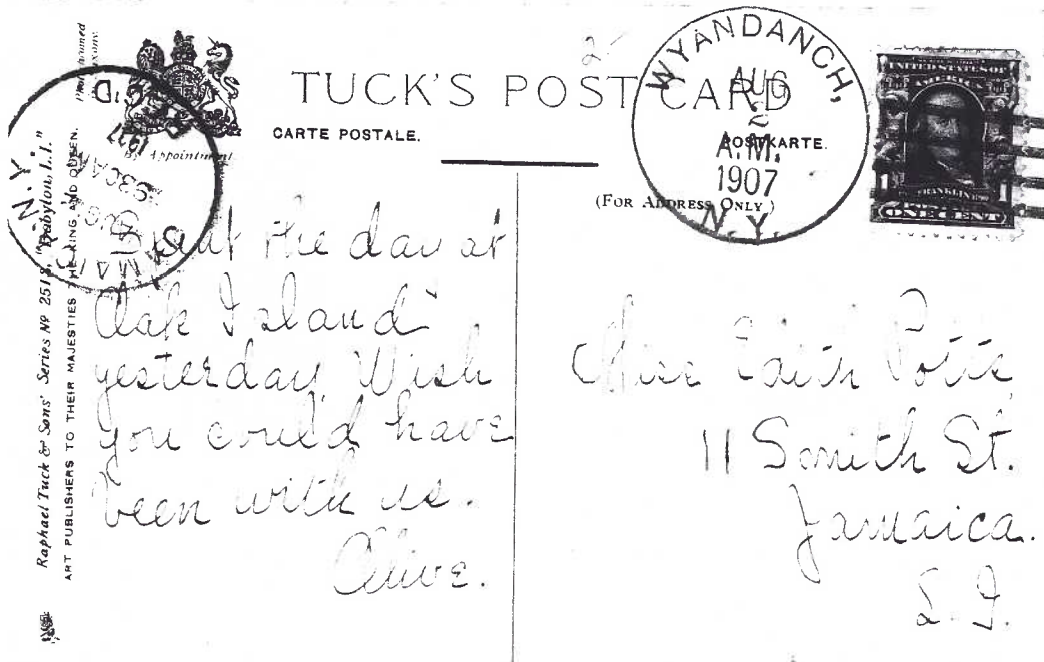
SAWYER PUBLISHING CO.,
WATERVILLE, MAINE.

Registered cover from WYANDANCE in 1897. Stamps paid the 2c first class rate and the 3c registry fee.

WYANDANCH, L.I., N.Y.



The Wyandanch P.O., so name to honor one of the most famous Long Island indian chiefs. It was established on Feb. 11, 1903 as a result of a name change from Wyandance. Here a photo view in 1942.



A nice duplex handstamp WYANDANCH/AUG/2/A.M./1907/N.Y. on a Tuck post card of the Tahlulah Lake in Babylon.



AUCTION ACTION

Long Island Postal History at Auction - Prices Realized

Sale Date	Auction House	Lot No.	Description	Auction Est.	Price Realized*
1/19/85	McGuire	52	1846 SFL w/nice red oval "STEAMER/5/OREGON", NYC to Wareham, Mass. F-VF	60-75	38/44 (F)
1/23/85	Wolffers	67	Sept 24, 1911 Garden City City Estates Aeroplane Sta. No.1 cds on ppc."Aerial Special Dipatch"sl.F-VF	100-150	130
1/25/85	Phillips	710	#98 (15c Lincoln) on cvr to Germany with 1869 magenta ms "Cutchogue,N.Y." red NEW YORK PAID ALL/BR. TRANSIT cds. F	175	90/210 (F)
		1175	Lot of 31 covers, 1860's to 1903, no NYC, incl.a straight line NEW VILLAGE N.Y., blue dldc 1882 CUTCHOQUE,/SUFFOLK CO,N.Y. cds w/maltese cross, and other New York State post-marks.Nice stock,flts,G-F	75-100	60/64 (F)
1/25/85	Zimmerman	323	Walcott #2253 Red & Blue illus. Miss Liberty & Shield C.W.Patriotic cover w/East New York pmk.tying #65,Fine	50-75	80 (F)
		549	#C4 (8c Propeller) neatly tied by Hampton Bays,N.Y. 1924, Very Fine	50-75	45
		511	Pioneer #3a,Garden City Estates,N.Y. Sept.30,1911 cover, Fine	200	130
1/26/85	Spelman	526	JAMAICA/N.Y. Fine red cds 10c (#35),pen cancel,on 1861 cv. to Calif.Fine	85	44 (F)
		891	AEROPLANE STATION No.1/ GARDEN CITY ESTATES,N.Y. Sept.24, 1911.Fine pmk. ties 1c on photo p/c, biplane "R.Johnstone",Fine	200-250	130 (F)

*F=Sold to a floor bidder; B=sold to the book; opening bid/hammer price
Prices realized do not include 10% buyer's comm., if any.

NEW VILLAGE N.Y. / Jan 11



Black NEW VILLAGE N.Y. sl with manuscript "Jan 11" and with circle of wedgeskillertying a 3c 1861 stamp on cover to Northville, Success PO

A small cover with a cds from NEW VILLAGE N.Y./JAN/18 and a circle of wedges cancel on a 3c '61. The cover was sent to the Success P.O. where the addressee, Henry Hallock also lived, however he had gone to Poughkeepsie and the cover was forwarded there from Success where it received a manuscript "Success NY January 26th, 1866" cancellation in brown ink. An additional 3c stamp cancelled in ink was affixed to pay the forwarding rate.



Eastman's ...
Poughkeepsie ...
Success NY January 26th, 1866



Mr. H. W. Hallock
443-445 Broadway
New York



A bold RONKONKOMA MAR/23/68/N.Y. cds on cover to NYC. Scott #88, the 3c grill111x13 received a cocentric circles killer.

CLASSIFIED ADS

WANTED - Farmingdale, Bethpage (Central Park), Old Bethpage, Plainedge, Plainview (Manetto Hill), Massapequa, Pinelawn, and Amityville history material. Gary Hammond, 31 Lowell Drive, Farmingdale, N.Y. 11735

WANTED - OLD QUEENS Post Cards. Original collections of old post cards. (212) 523-3083.

WANTED - Covers postmarked from Cold Spring or Cold Spring Harbor, from the stampless period through 1900. David Snow, P.O. Box 566, Lindenhurst, N.Y. 11757

WANTED - Long Island post cards and covers postally marked "Missent to _____ (Town Name)". Complete and sharp strikes only. Carl F. Baker 140 Lewis Road, Northport, N.Y. 11768

WANTED - Pre 1920 view cards of Roslyn, Port Washington, Glen Cove, Manhasset, Great Neck. Stampless covers also. Send on approval to Bob Juceam, 106 Hemlock Road, Manhasset N. Y. 11030

WANTED - Long Island postal history items from Kings (Brooklyn), Queens, Nassau, and Suffolk Counties, from the stampless period to the present. All covers considered. Seeking L.I. fancy cancels on cover, postmaster free franks, registered covers, covers to foreign destinations, and Civil War patriotics used from L.I. Also want L.I. post cards from 1900 to 1920, especially those depicting Long Island post offices and railroad stations. Approvals preferred or send photocopies to J. Fred Rodriguez 62 Shady Lane, Huntington, N.Y. 11743

WANTED - The U.S. 1869 pictorial issue used on cover with local town cancels from anywhere in the country, especially from New Jersey and Arizona. Correspondence invited. Brad Arch, 144 Hamilton Ave., CLIFTON, New Jersey 07011

WANTED - LIRR negatives, all subjects, prior to 1966, any location. Contact: David Keller 5475 Express Drive North, Holtsville, N.Y. 11742

*****LIPHS*****

This is the last issue of the Journal where classified ads are free. Starting with the Summer issue advertising in the LIPHS JOURNAL will be paid for by those desiring to advertise via a classified ad or a display ad.

*****LIPHS*****

ADVERTISING RATES: Classified Ads -\$1 for up to 30 words per issue

DISPLAY ADS (Must be Camera Ready)

1/8 of a page - \$ 2.50 per issue

1/4 of a page - \$ 5.00 per issue

1/2 a page - \$10.00 per issue

Full Page - \$20.00 per issue

Display Ads can be used for private treaty and auctions.

