
| | |
|--|----|
| President's Message..... | 1 |
| Editor's Notes..... | 2 |
| Secretary's Notes and Correspondence..... | 3 |
| Long Island Post Offices - Part II -(Nassau County)..... | 4 |
| The Last Voyage of the Steamer Franklin..... | 29 |
| Pan Am and Long Island..... | 32 |
| Benjamin F. Thompson, Historian - Postmaster..... | 33 |
| Long Island Star Cancellations - Update..... | 37 |
| Auction Action..... | 39 |
| Classified Ads..... | 41 |
| Society Roster..... | 42 |

Organized
1980



Annual Dues
\$10

Post Office Box 1178
Southhold, N.Y. 11971

| | |
|-------------------------------|--|
| President..... | Daniel Knowles |
| Vice President/Secretary..... | Arthur Fitzpatrick |
| Treasurer..... | Carl F. Baker |
| Directors..... | Arthur Pollinger J. Fred Rodriguez John M. Price Jr. Gary Hammond |
| Editor..... | J. Fred Rodriguez |
| Associate Editor..... | Carl F. Baker |

MEMBERSHIP RENEWALS FOR FISCAL YEAR 1984-85 ARE DUE BY AUGUST 1st.
RENEW EARLY!!!!RENEW NOW!!!!SEND YOUR CHECK FOR \$10 TO THE
TREASURER CARL F. BAKER 140 LEWIS ROAD, NORTHPORT, N.Y. 11769

PRESIDENT'S MESSAGE

The LIPHS held a luncheon meeting at my house on June 3, 1984. It was a great opportunity for me to see some of the regulars once again, and also to meet some new members of our society whom I have not previously had the pleasure to meet. There was a fair amount of buying, selling, and trading. John Price brought his collection for us to view. Fred Rodriguez, accompanied by his brother Jose, brought selected covers and post cards for us to see. I also passed around a few recent acquisitions. I believe that this style of meeting can be a lot of fun and is a good way of bringing the membership together. I hope that others of you will be able to join us in future meetings.

Having the opportunity to write the President's message gives me a unique opportunity to discuss current collecting trends. Probably the most important recent event for LIPHS members was the June 10th Frojola auction of the Robert Hutchinson collection of New York State postal history. There were a number of LI covers in this sale. The three notable Long Island stampless covers - the Stony Brook stencil, the Southold arc, and the Huntington South covers sold for \$450-500 each. A small batch of Suffolk Co. stampless covers sold for \$800 and a Suffolk Co. cover collections with an assortment of stamps and strikes went for \$1050. These prices do not include the 10% commission. So, Long Island postal history is alive and well, selling for astronomical prices when it comes up for auction.

We collectors are usually both happy and sad about high prices. We all want to buy low and sell high. However, it seems as if the prices of Long Island postal history are going through the roof. When I visited Richard Frojola's home to view this material, other dealers present told me that Suffolk Co. is the hottest county to collect. That's wonderful news for those collectors who formed their collections years ago prior to the current boom. It is not such good news for collectors new to the area. It is always a tough decision whether to let a beautiful cover go to another collector or to bid a very high price, perhaps for more than it is worth, in order to obtain it for one's own collection. This is a personal decision which we all make when we purchase covers. I hope that we don't drive up the price so high that we discourage new collectors from entering the market. I would appreciate hearing comments on this matter from other members of the Society.

To change the subject, I have two projects which I am now trying to complete. First, although I have a rather extensive collection of Suffolk County and postmaster markings, I have almost none from Queens and Kings Counties. In order to put together a listing of these markings for future issues of the LIPHS Journal, I request that members send me photocopies of covers bearing county-style postmarks used in Queens, Kings and Suffolk Counties. Remember that postmarks that include "Long Island" and "L.I." are also considered county postmarks. Second, I am updating George Linn's book on the "PAID" cancellations on the 3 cent 1861 issue. I am doing this project in conjunction with the U.S. Cancellations Club. I would appreciate if members who have "PAID" cancellations on the 3 cent 1861 send me photocopies of covers that I may utilize for updating this book.

Best regards to all of you; I hope you all enjoy your summer vacations.

Daniel Knowles

EDITOR'S NOTES

Welcome to another issue of the LIPHS Newsletter and Journal. You will notice a few changes in the style and format of this issue - uniform printing styles, justified margins, highlighted headings and titles, and the use of various print fonts. This is all thanks to a new computer in our midst. It is interesting that now that I have played with this new "toy" I can't conceive how I've done without it. The word processing capabilities are simply amazing. The flexibility it allows, especially in the storage, retrieval, editing and printing of data has made my job as editor much more enjoyable. As you read the various philatelic publications you can't fail to notice how computers are creeping into our hobby. The American Philatelic Society has just established a philatelic computer users group (see announcement on page 31), and Theron Wierenga is running PhilaBoard, a philatelic computer bulletin board service.

In this issue we welcome back Fred Lightfoot, well known in philately, photographica, and in local history circles. He has penned for us another interesting article - this one on the Steamer Franklin. Bob Miller, a new member, has contributed a short piece on the role of Pan American Airways in Long Island's airmail postal history. Dr. John Price continues with his pictorial survey of Long Island post offices. Other interesting articles round out this summer edition of your Journal:

An "Auction Action" column will be a regular feature. Members have expressed interest in this type of information, one that is important to collectors and dealers alike. Interested in seeing other kinds of articles and regular columns? Write and tell us about it.

A new membership application form is enclosed. Your Society needs to grow - RECRUIT A NEW MEMBER TODAY!

Coming in the next issue -- the railway post office history of the Long Island Rail Road, a multi-part series illustrated with many choice and rare LIRR covers. John Price will continue with his pictorial survey of Long Island post offices covering western Suffolk County. The history of the Central Islip Post Office will also be included in the Fall issue of the LIPHS Journal and Newsletter.

Have a enjoyable summer!

NEED A COPY OF A MANUSCRIPT OR HANDSTAMP CANCELLATION
OF SUFFOLK STATION FOR THE UPCOMING ARTICLE ON
THE CENTRAL ISLIP POST OFFICE. PLEASE SEND THE COPY
TO J. FRED RODRIGUEZ 62 SHADY LANE HUNTINGTON, N.Y.
11743. THANK YOU.

SECRETARY'S NOTES AND CORRESPONDENCE

It is indeed a pleasure to welcome six new members and one reinstated member:

David Proulx
7629 Homestead Dr.
Baldwinsville, N.Y.
13207

Richard C. Frojola
Moody Lane
Danbury, Conn.
06810

Alfred Hahn
14 Quay Court
Centerport, N.Y.
11721

Jose L. Rodriguez
702 Wildwood Dr.
Cheshire, Conn.
06410

Vincent F. Seyfried
163 Pine St.
Garden City, N.Y.
11530

Robert Sklarz
14 Amherst Road
Hicksville, N.Y.
11801

Reinstated:

Frederick S. Lightfoot
P.O. Box A-F
Greenport, N.Y. 11944

The LIPHS is honored to count among its members Mr. Vincent Seyfried, a well known historian, author and publisher, best known for his seven-volume history of the Long Island Rail Road. Mr. Seyfried, although not a collector of postal history, is nevertheless familiar with the history of many of the Island's post offices. The seventh volume of the history of the LIRR, limited to 750 copies, is entitled THE AGE OF ELECTRIFICATION 1901-1916 and is available for \$21.50 ppd. It can be purchased by mail directly from the author at 163 Pine St. Garden City, N.Y. 11530

Richard C. Frojola of the well known auction house of the same name is a serious student of postal history. His help to our society will be invaluable. His fine library of postal history and post route maps is one of the best. His postal history auctions are well known to all of us; he has set high standards in that field.

Alfred Hahn tells us that he collects and studies the postal history of Burma. He is also interested in British West Indies postal history and is looking at 20th century Long Island postal history as another possible collecting area.

These new members now bring the total LIPHS membership to 58, a six-fold increase since August of 1980 when a group of us founded the Society. Let's all work together for its growth and longevity.

We want to thank Theron Wierenga, author of the U.S. Classics column in STAMPS for his kind words about the LIPHS and this publication. He said in the June 9, 1984 issue: "My wife Linda, received her copy of the Long Island Postal History Society Newsletter and Journal today and it proved interesting to me, as usual. This is not a large society, but their journal is well written and of real value to collectors."

LONG ISLAND POST OFFICES - PART II - NASSAU COUNTY

By Dr. John M. Price Jr.

Although Nassau County as known today is relatively new, the towns and villages in the County are not. In fact, the three townships within the county date back to the seventeenth and eighteenth century: Hempstead (1643), North Hempstead (1784, originally part of Hempstead) and Oyster Bay (1653). These towns were originally part of the old and much larger Queens County, but although a part in the physical sense, they were collectively very much apart in character and spirit. The sessionary spirit of the Queens County easterners began to emerge in the mid-nineteenth century. Various movements for the formation of a separate county sprung throughout the three townships with varying degrees of fervor and no degree of success. Efforts proved successful at the end of the nineteenth century when the City of New York expanded its boundaries by absorbing the City of Brooklyn, the neighboring villages in Kings County, and the western towns in Queens County. The three eastern townships of Queens were not included in the bill to create Greater New York passed into law by the State Legislature in March 1896. Supposedly, they could offer little to the city but would continue to require much financial support. This situation was intolerable for they were unequally represented and were unfairly taxed. The proponents for a separate county seized this opportunity to push a bill through the Legislature and gained Gov. Black's signature on the bill.

The birth of the new county was celebrated concurrently with the coming of the new year for in January 1, 1899 the new County of Nassau was born. It carried the early name of the island of Long Island although many other names were proposed such as Ocean, Matinecock, Norfolk, and Bryant.

As a proud resident of Nassau County I bid you Greetings from Great Neck!

Letter Carrier Series
post card copyrighted
1907 by Franz Huld.
(John Price Collection)



The CEDARHURST P.O. building about 1906. Notice that the residence and real estate office was enlarged and the post office moved next door. This post office was established on May 13, 1886 under William Clarke, postmaster.

July 29, 1912 - To Len From Ma.



Post Card

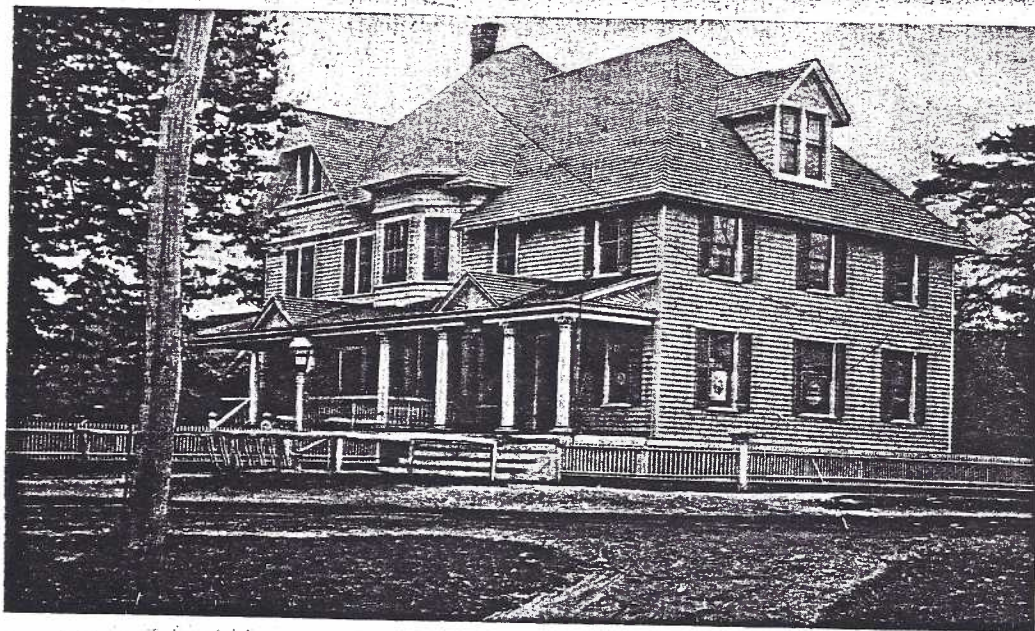


Hello Joe.

I will write a letter the first of the week. I have a bag of tomatoes with me and they smell fine here. Love

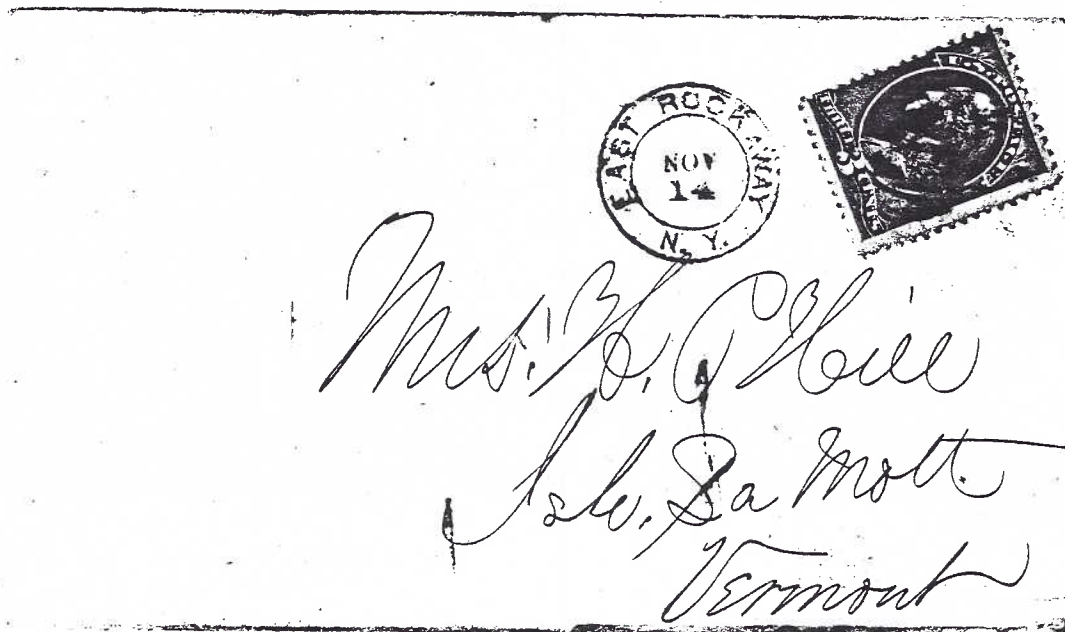
Mrs. Jesse Brown
Huntington
Long Island

Duplex cds handstamp from Cedarhurst for 1909 on a local post card view to Huntington.

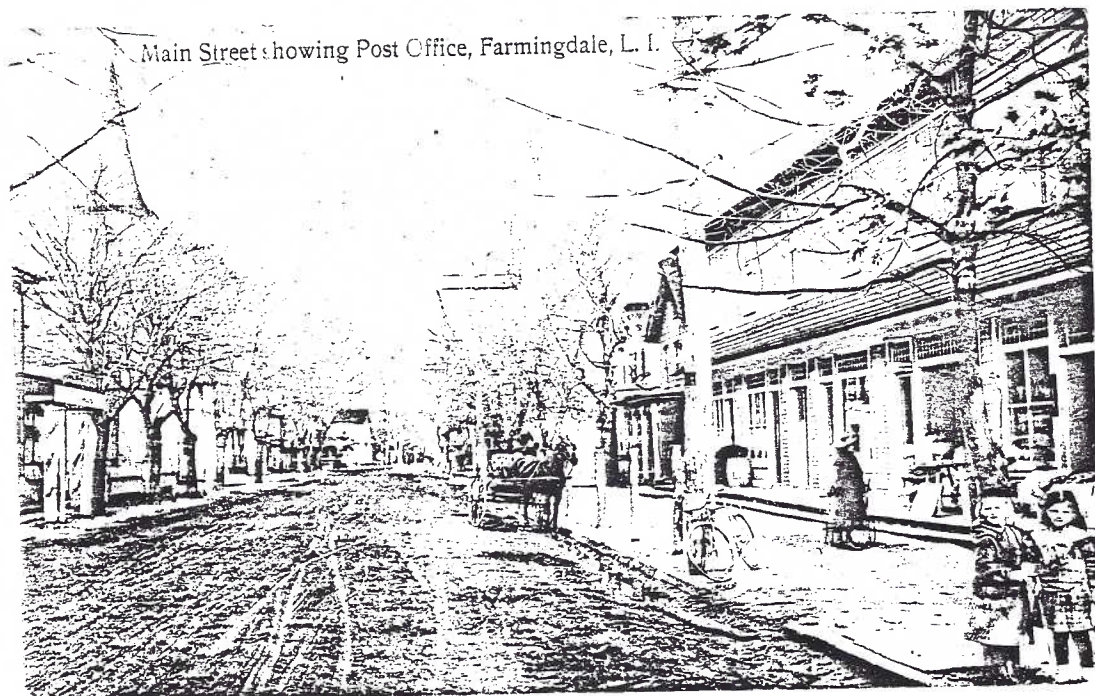


POST OFFICE, East Rockaway, L. I.

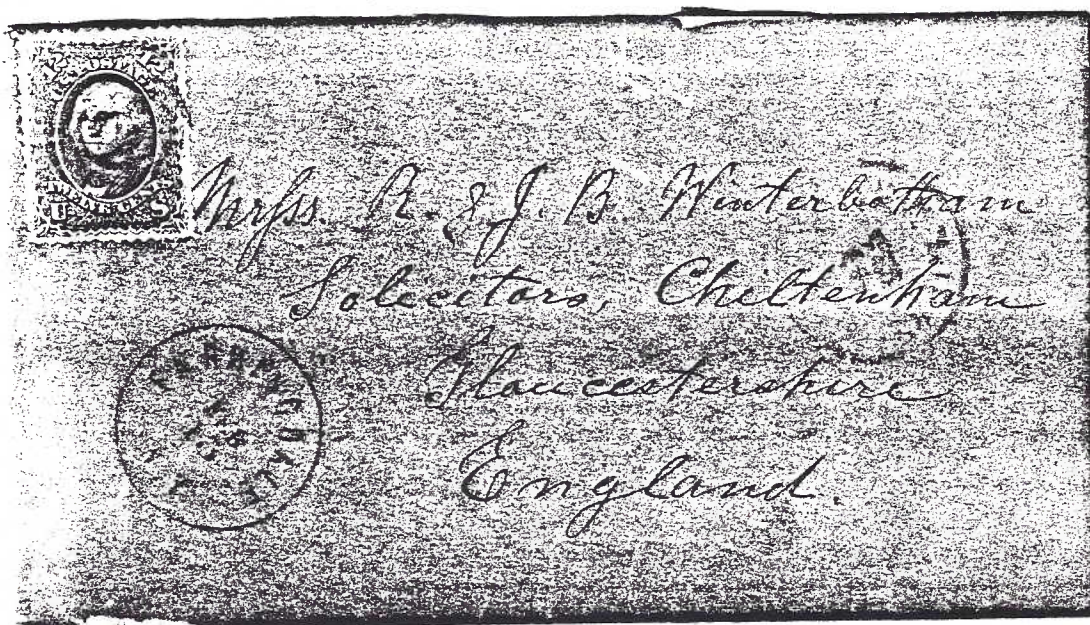
EAST ROCKAWAY post office, about 1915. Originated as ATLANTIC in 1868, and changed to EAST ROCKAWAY in 1870, with Richard Carman as first postmaster.



Double cds of "East Rockaway N.Y. Nov 14" with a 3-cent banknote, probably in the 1870's.



FARMINGDALE post office about 1908 at the right of the view.
First established on July 31, 1845 under John Monfort as
postmaster.

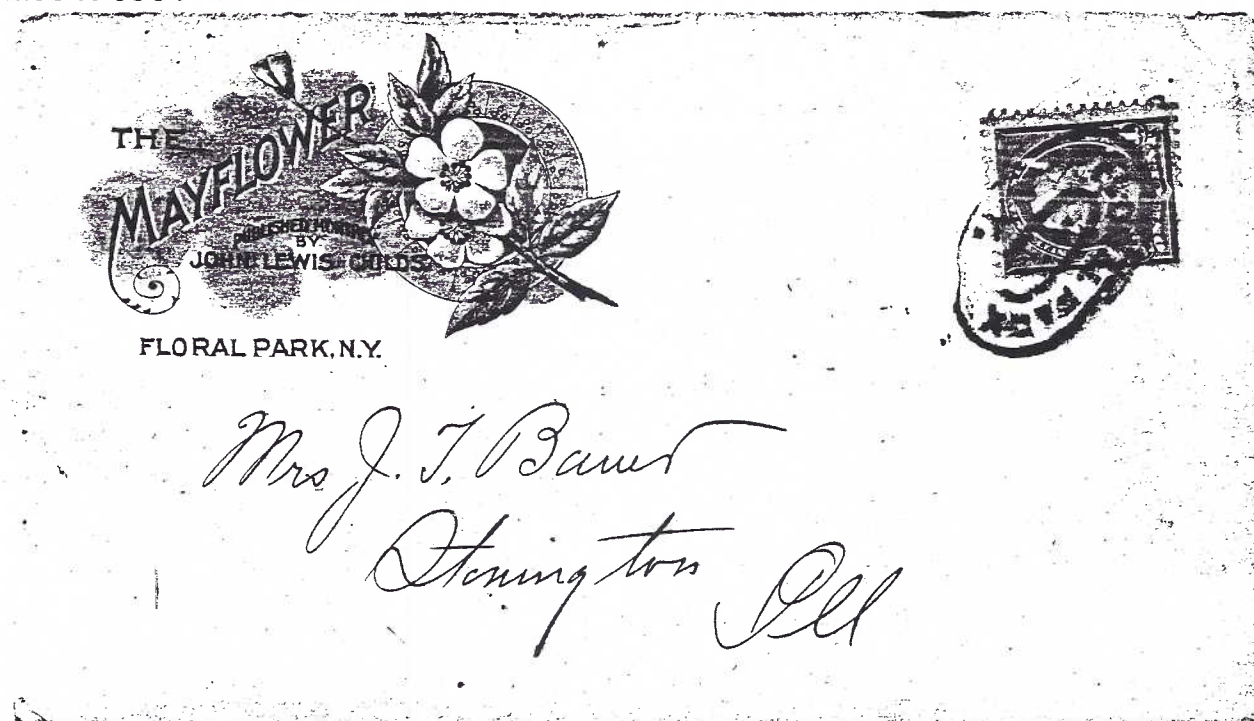


An 1869 cover from Farmingdale to London with a black 12
cent Washington (Scott's 69) tied by a clear cds from Farmingdale.
(Rodriguez Collection)

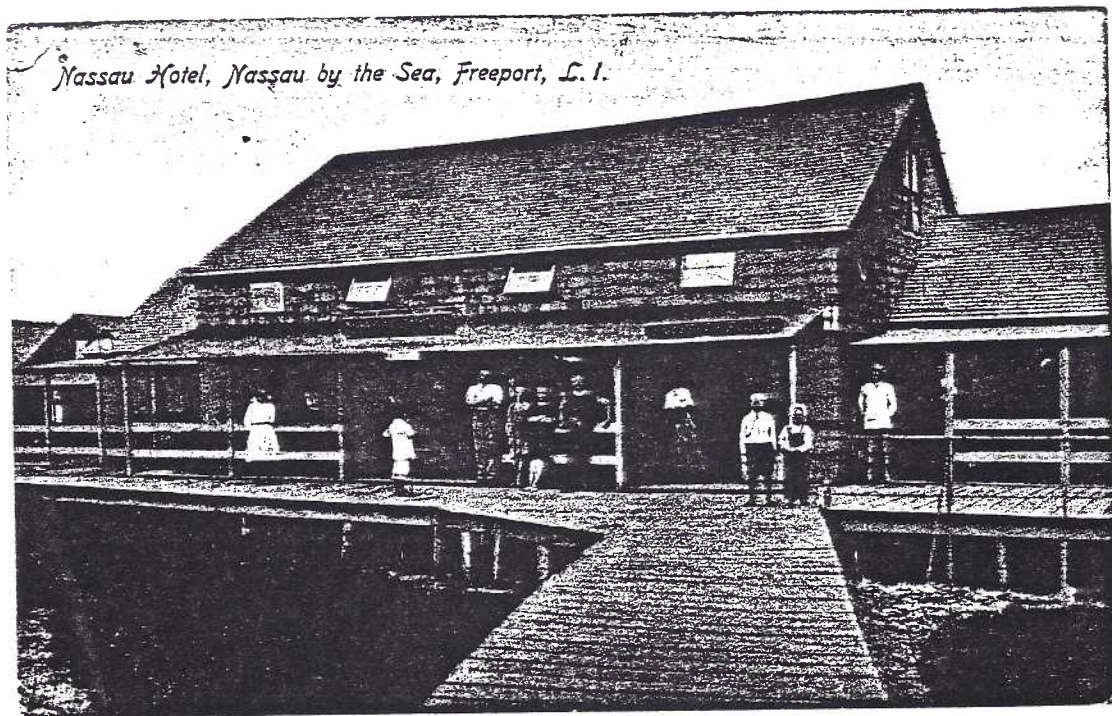
Post Office and Tulip Ave.,
Floral Park, L. I.



FLORAL PARK post office, about 1909. First opened as EAST HINSDALE in 1877 with Daniel R. Hendrickson as postmaster. Changed to Floral Park in 1884, with Miss Emma Saliers as first postmistress.



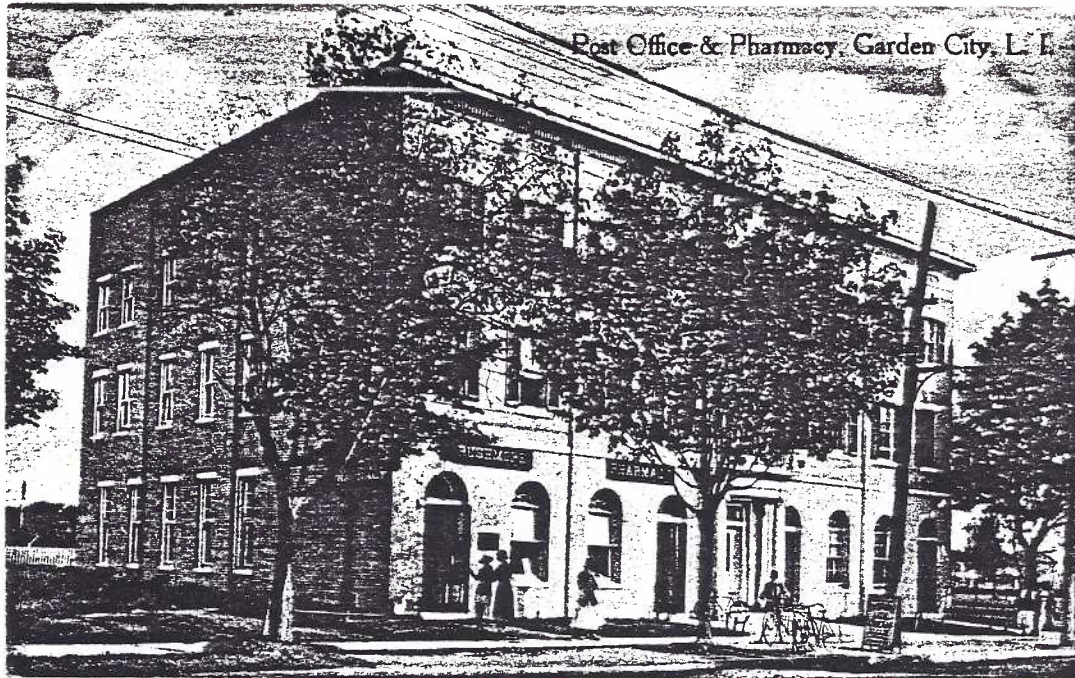
Corner card of "The Mayflower," published by John Lewis Childs, with a double oval circular rate cancel tying a 1-cent Bureau issue.



A post office in **FREEPORT**, about 1910. Obviously not the main post office. Established in 1853 with Willet Charlick as the first postmaster.



"FREEPORT N.Y." cds with a 6-cent banknote tied by a target cancel.



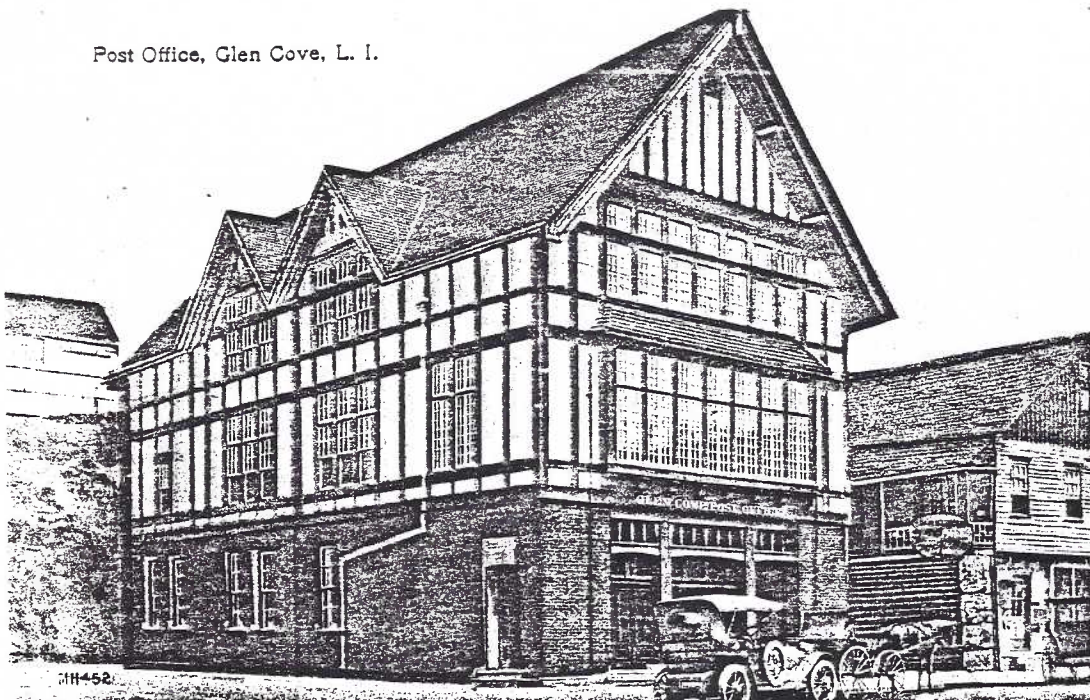
GARDEN CITY P.O. in 1913 at the Rushmore Pharmacy.
Established on August 12, 1875 under William R. Hinsdale.

*John F. Goodlee
Oct. 30, 1888.*



*Mr D. W. Edmond
Newburgh
N.Y.*

Large Garden City double circle date stamp with star killer tying
banknote issue on cover to Newburgh, N.Y.



GLEN COVE P.O. about 1915. This building still stands. Originally known as Moscheto Cove (as in mosquito), it officially became Glen Cove on February 24, 1834 with James Udall as the first postmaster.

M. O. BUSINESS



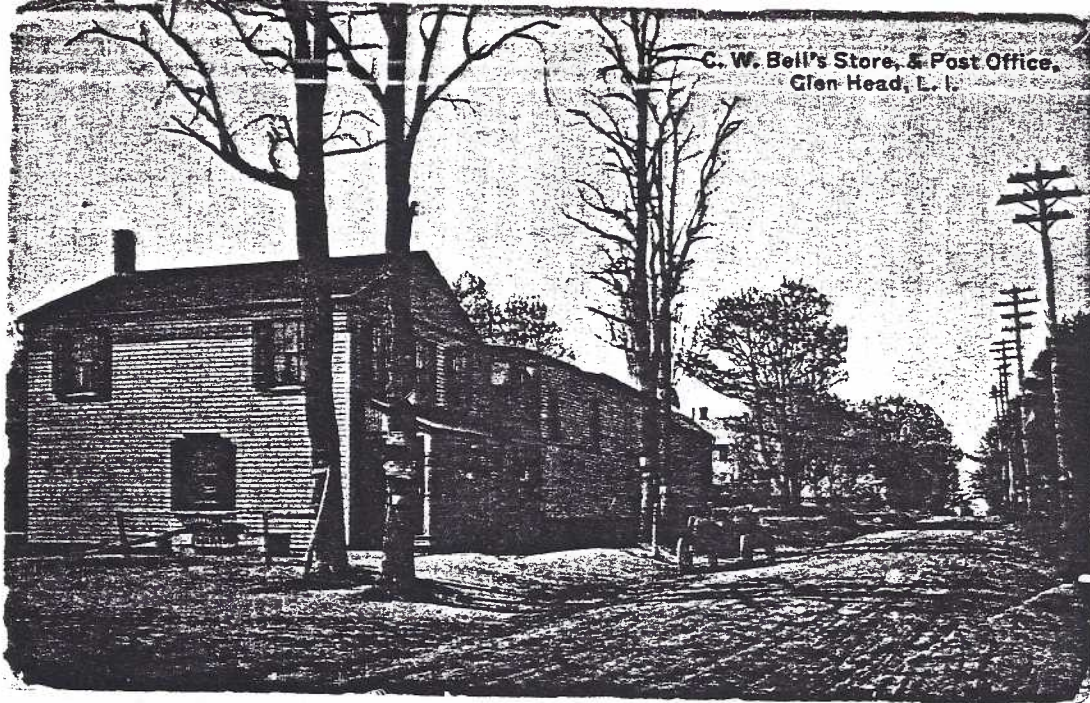
Post Office Department.
POST OFFICE AT GLEN COVE, N. Y.
OFFICIAL BUSINESS.

*A penalty of \$300 is fixed by law, for using this
Envelope for other than Official Business.*

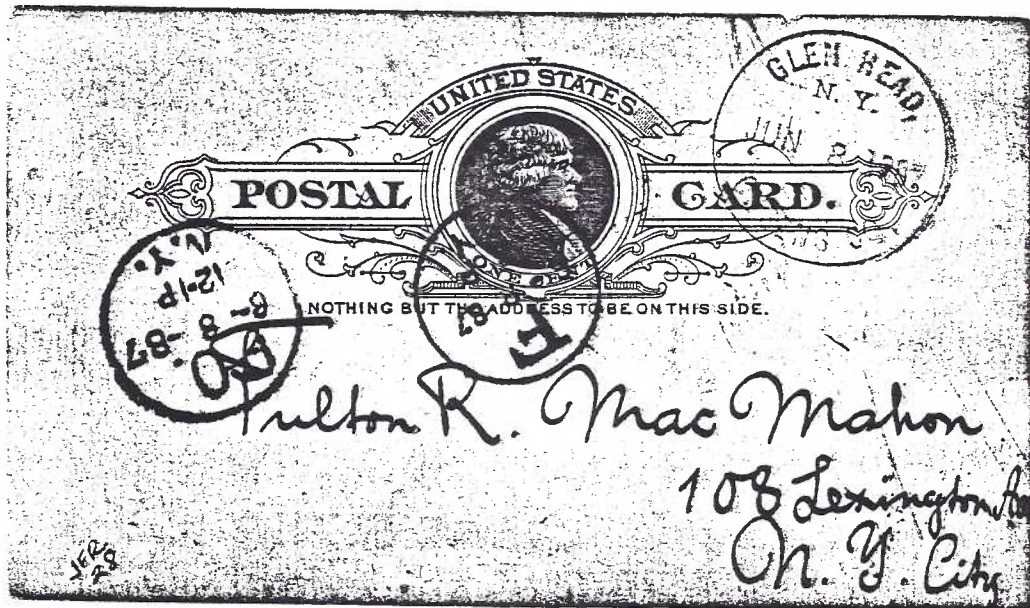
POSTMASTER,

Wm. B. Ford
1 Bristol COUNTY,
Mass.

Beautiful P.O. Department cover from the Glen Cove Post Office with a very fine strike of the Glen Cove M.O.B. (Money Order Business?) cancellation, 1886. (Rodriguez Collection)



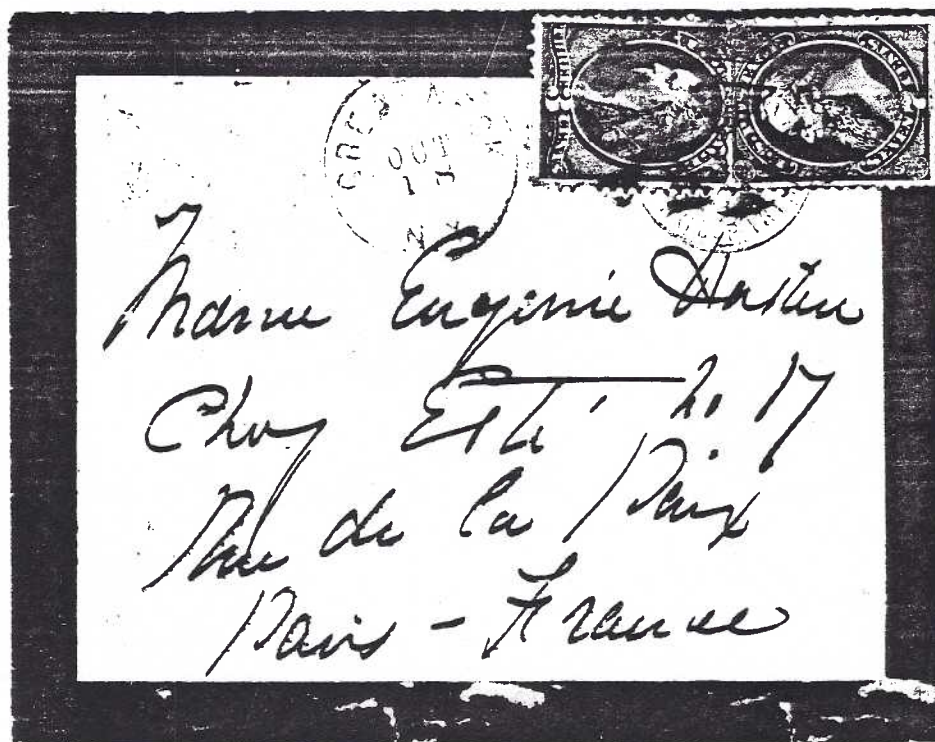
Charles W. Bell's Store & Post Office at GLEN HEAD about 1908. This post office was established on January 29, 1874.



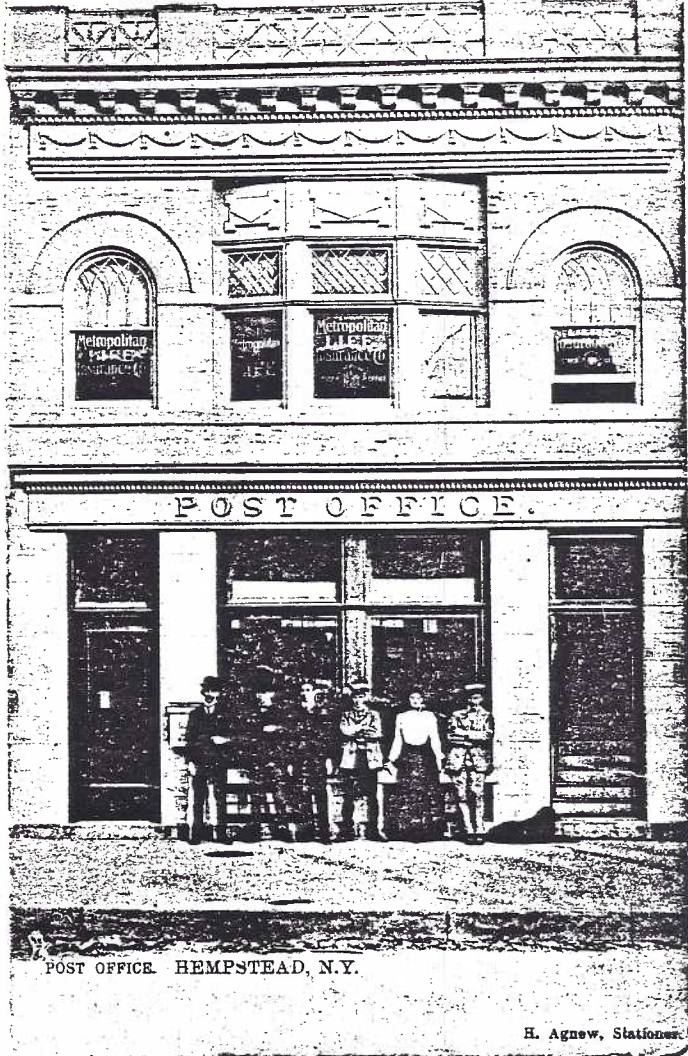
An 1887 Queens County postmark from Glen Head on a postal card.



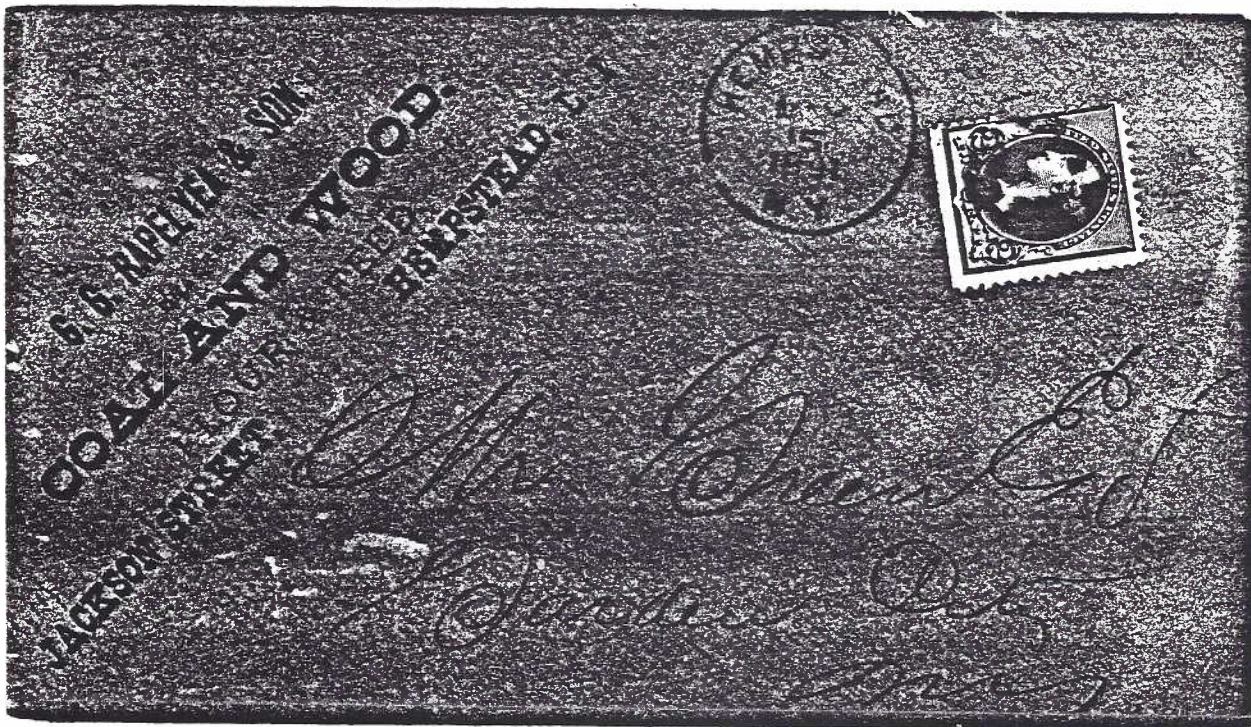
1950 view of the main post office in GREAT NECK.
Established in 1867 with Nehemiah Hayden as first postmaster.



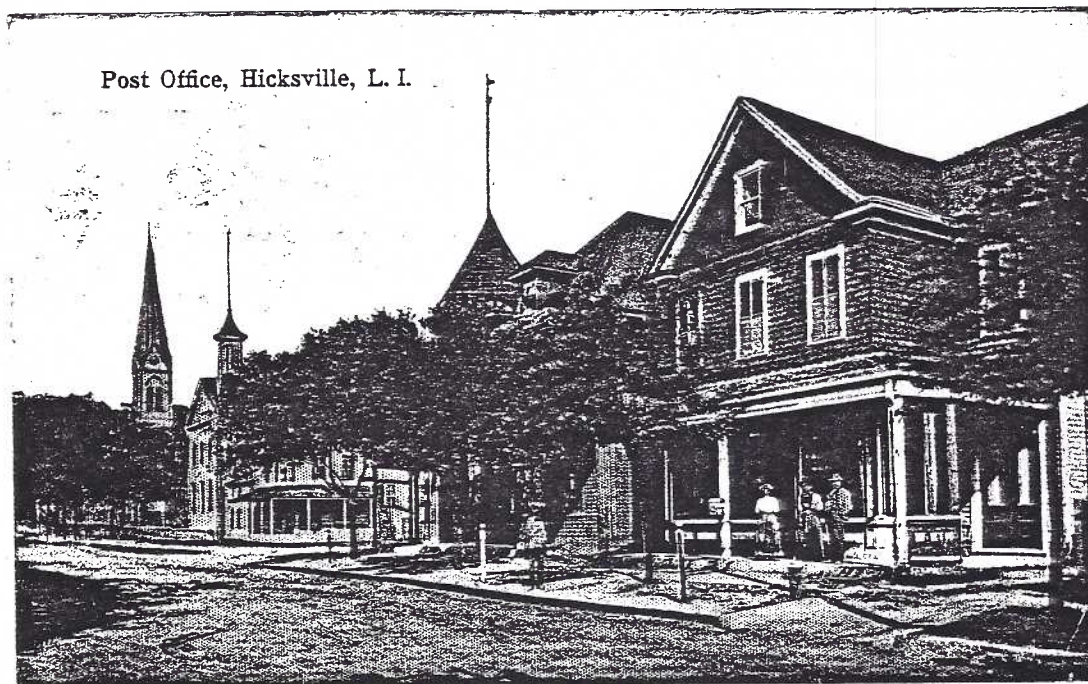
1880 mourning cover to France with 3-cent and 7-cent banknotes, tied by circle of wedges cancels and a blue French cancel. Apparently paid the 10-cent one ounce rate.



Tuck post card of the
HEMPSTEAD post office,
about 1903 with the post off-
ice contingent posing for the
the photographer. Established
in 1802, with Abraham Bedell
as its first postmaster.



1891 corner card of the village coal and wood dealer.



Post Office, Hicksville, L. I.

HICKSVILLE, L.I. post office, about 1910. Established in 1855 with David Sarmis as first postmaster.

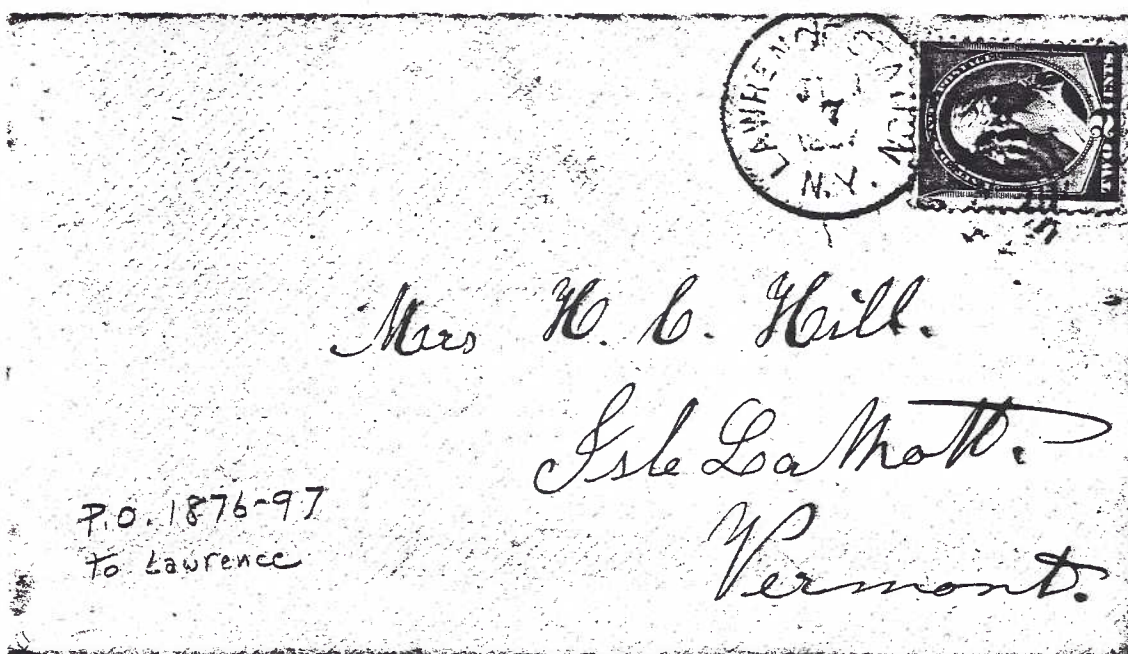


Large HICKSVILLE N.Y. cds on a fancy hand-decorated envelope, circa 1860's.

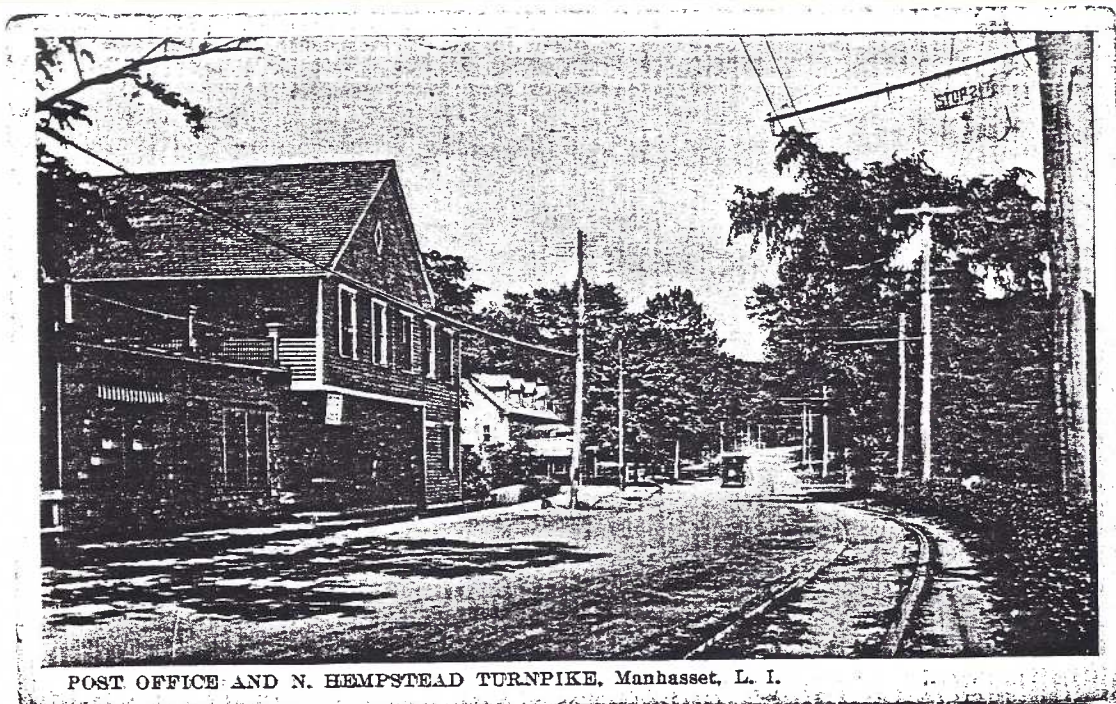


Lawrence Post Office, Lawrence, L. I.

The LAWRENCE P.O. next to Theo. M. Facopoulus confectionary store on a post card posted in 1913. This post office was originally established as Rockaway in 1840. On April 5, 1876 it changed to Lawrence Station and then changed to simply Lawrence on Jan. 7, 1897 under postmistress Mary A.S. Kavanagh.

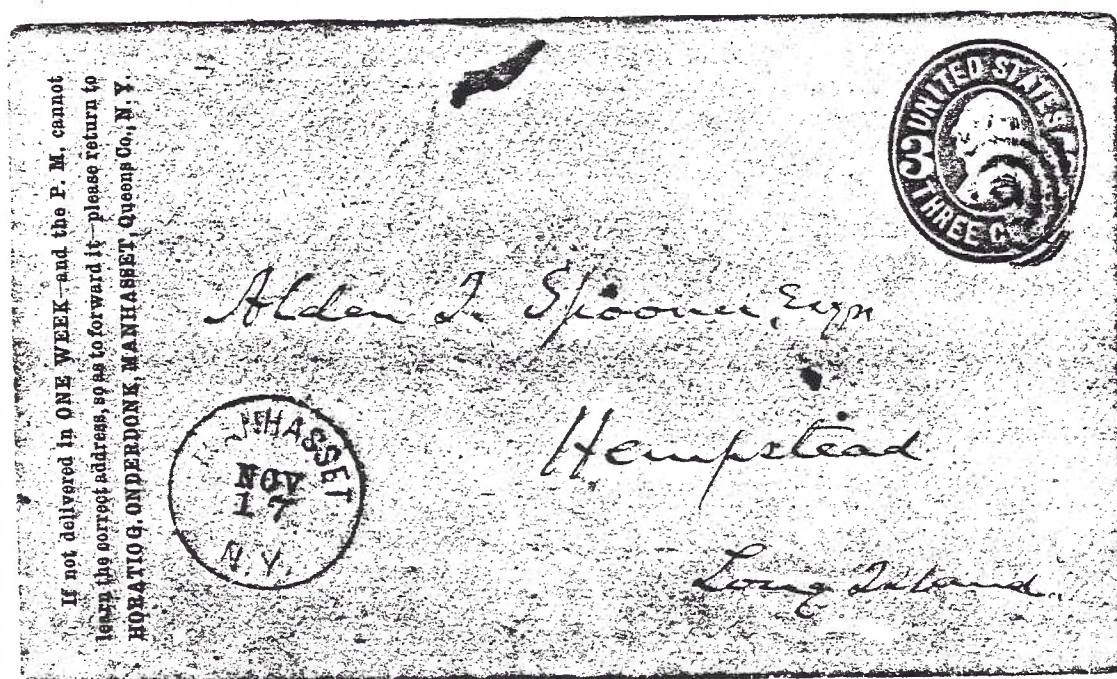


Cover bearing the LAWRENCE STATION cds dated June 7, 1887 tying a 2-cent brown banknote issue.

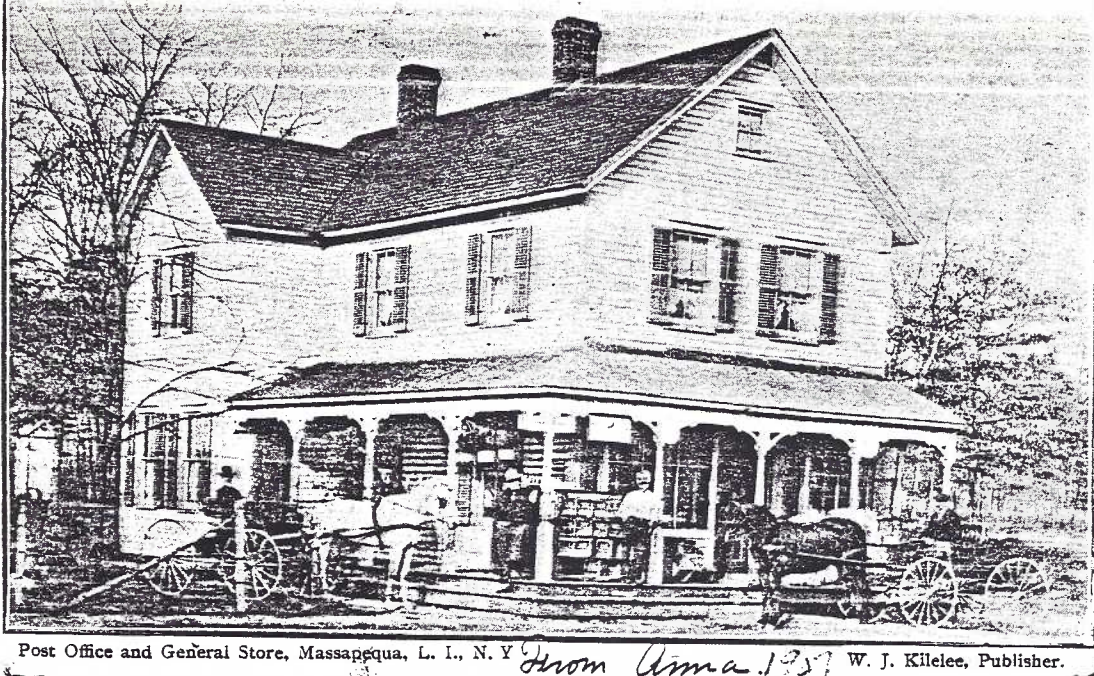


POST OFFICE AND N. HEMPSTEAD TURNPIKE, Manhasset, L. I.

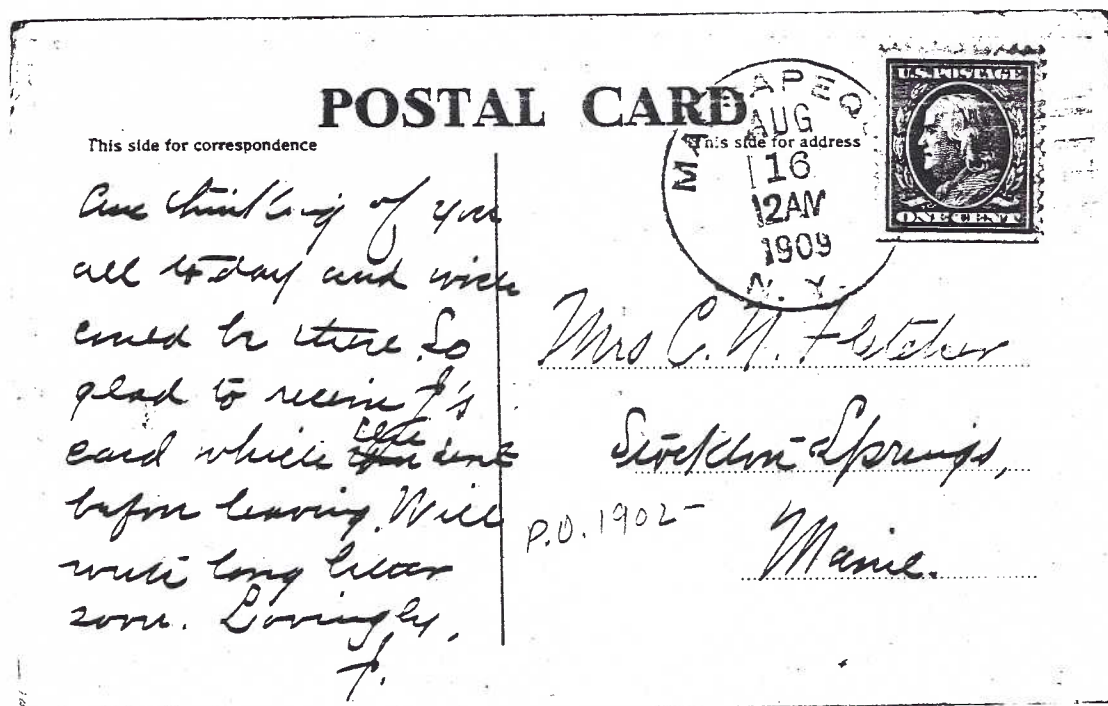
The MANHASSET post office about 1910. At that time the village of Manhasset was located around the intersection of Northern Blvd. (N. Hempstead Tkpe) and East Shore Road. Originated as HEAD OF COW NECK in 1812 and changed to MANHASSET in 1837.



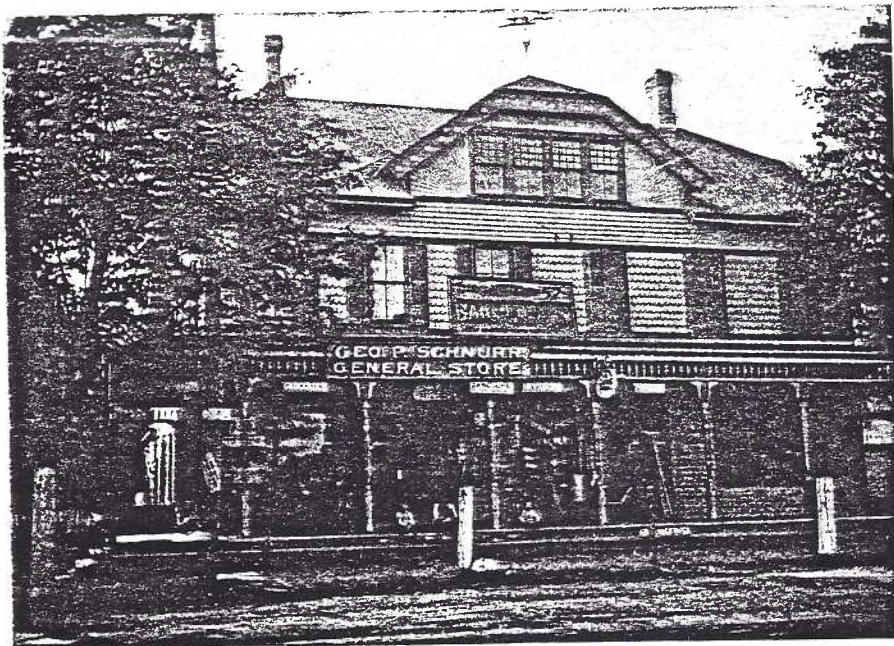
A 3-cent pink on buff stamped envelope Scott's No. U59 about 1865. The Onderdonks were prominent in Long Island history.



A typical general store and post office in rural Nassau County. Walter J. Killelee was the store keeper and the first postmaster of MASSAPEQUA when the post office was established there on June 28, 1902.



A local post card mailed from the Massapequa post office in 1909.

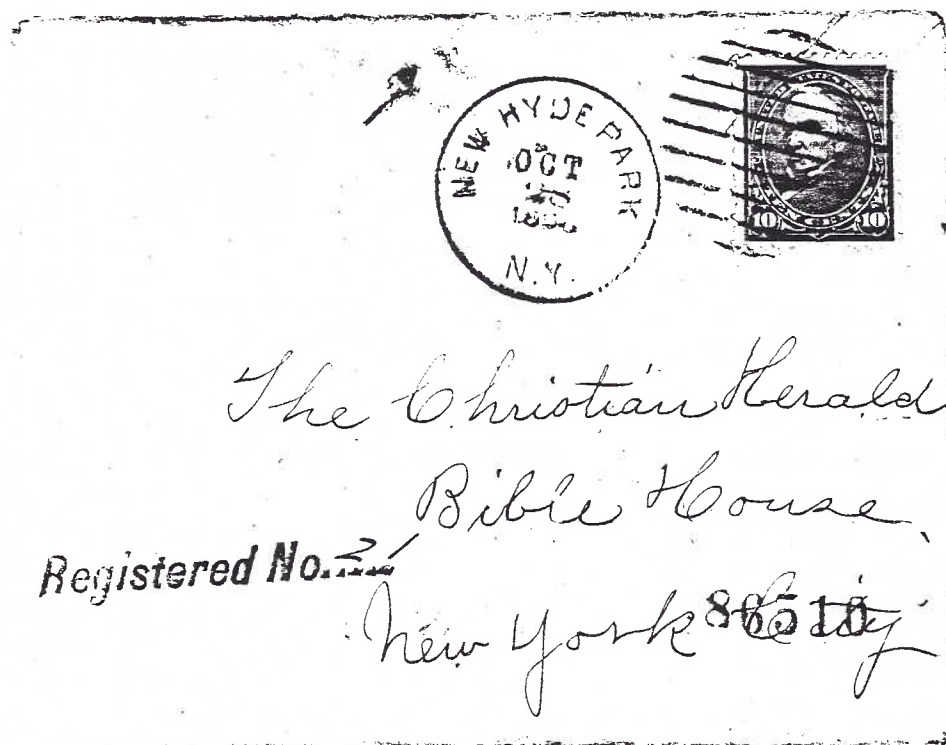


5588

POST OFFICE, NEW HYDE PARK, L. I.

ILLUSTRATED POST CARD CO., N. Y.

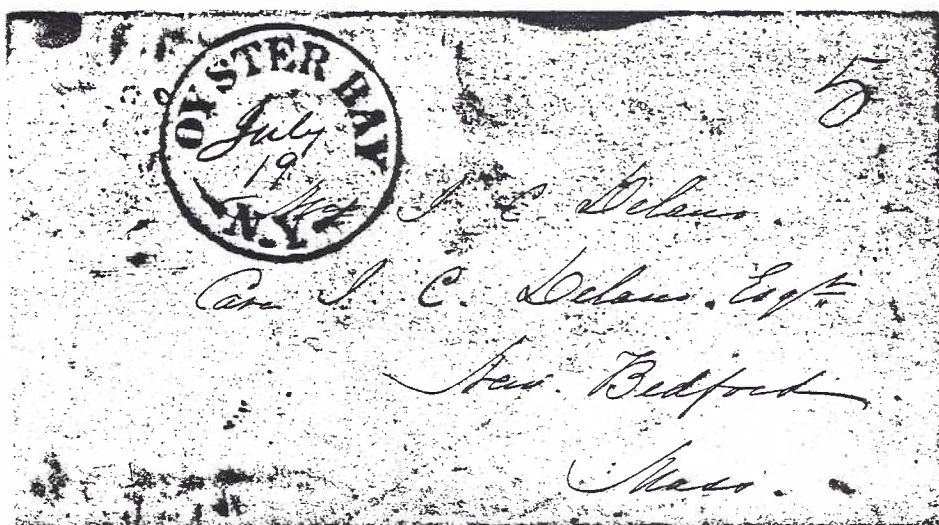
The NEW HYDE PARK post office in 1900. Established in 1871 with Jonathan C. Christ as the first postmaster.



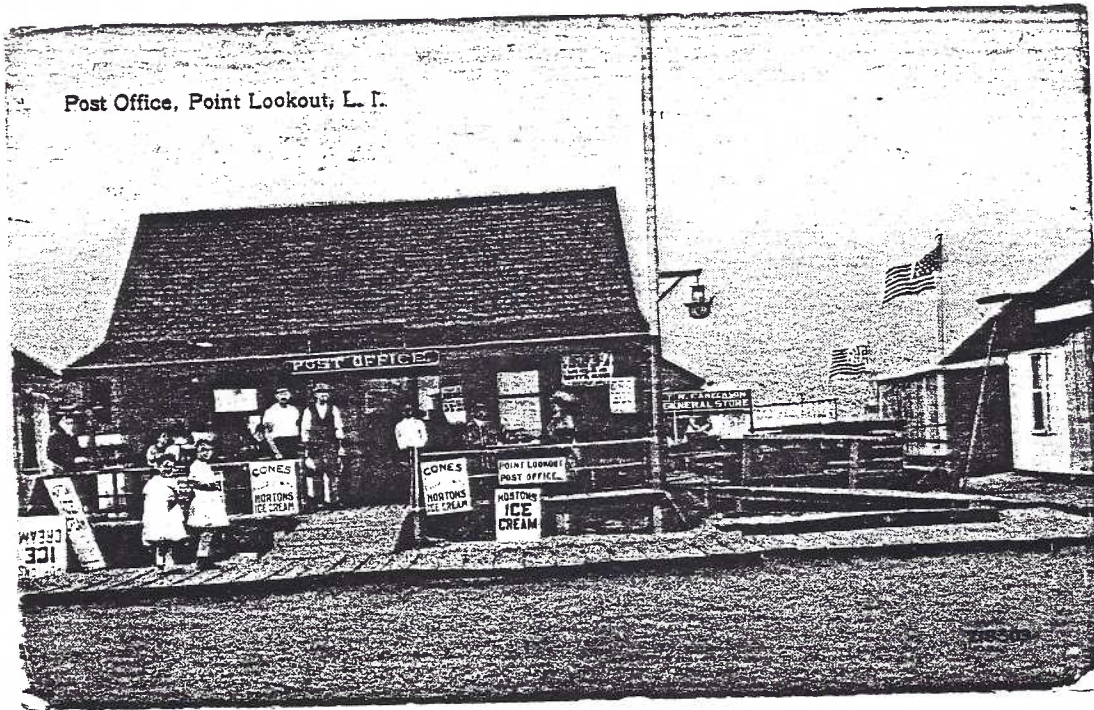
1896 registered cover with a 10-cent Bureau issue.



OYSTER BAY post office at the turn of the century. Established in 1807, changed to Syosset in 1846, and switched back to OYSTER BAY in 1848.



1849 red OYSTER BAY N.Y. cds on stampless ladies cover to New Bedford, Mass.



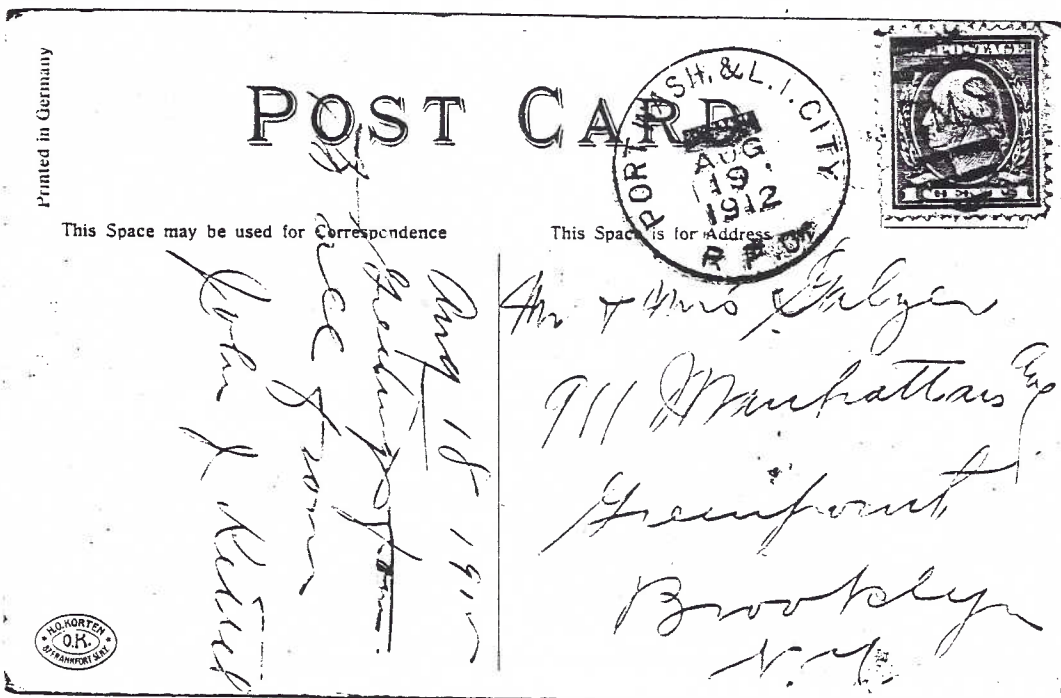
The **POINT LOOKOUT** post office at the Candy and Confectionary Store of Roland M. Lamb, first postmaster. This beach front post office was established on May 26, 1906.



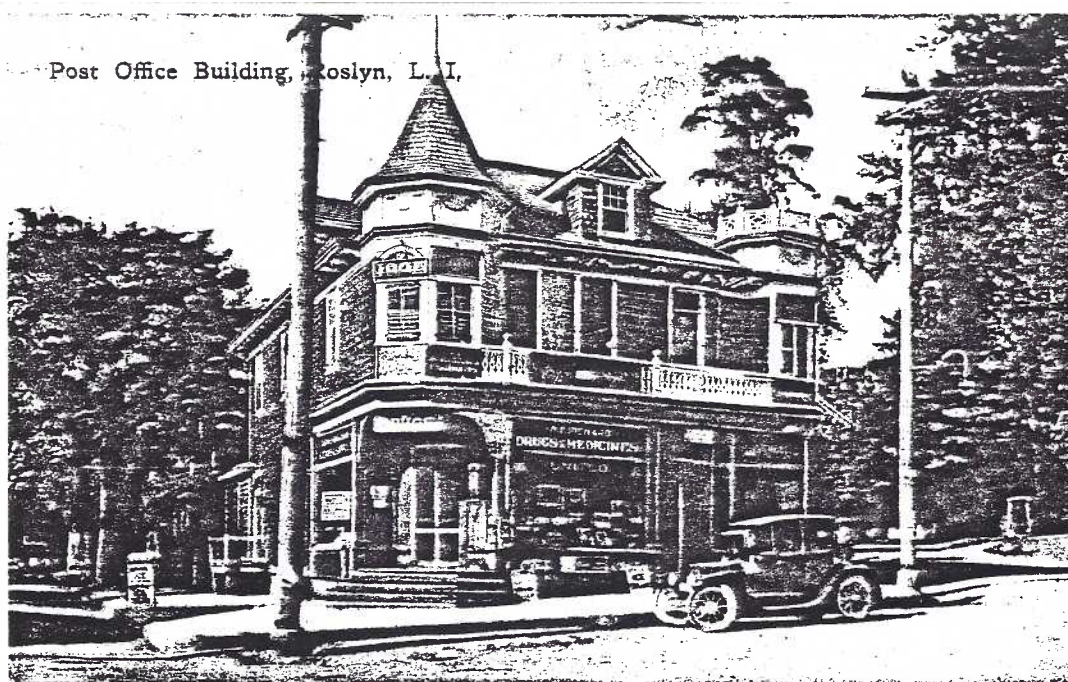
Doane cancellation of August 13, 1906 used from Point Lookout on a picture postcard to Roslyn.



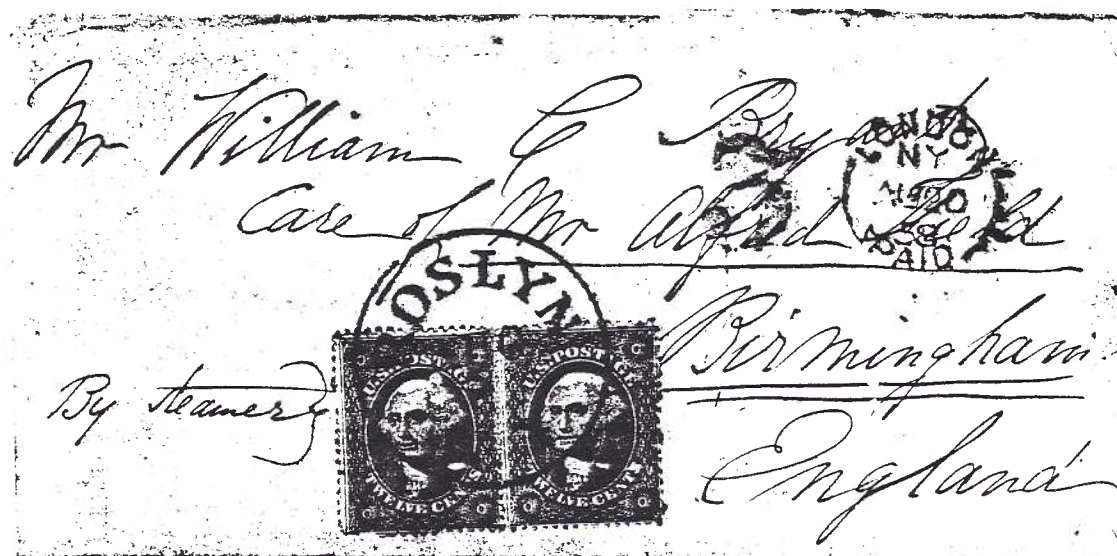
PORT WASHINGTON post office, about 1910. Note trolley car.
Established in 1859, with Thomas McKee as first postmaster.



"PORT WASH. & L. I. CITY R.P.O." (Towle 112-W-1) cancel on
post card to Greenpoint, Brooklyn.



ROSLYN post office, about 1915. Originated as HEMPSTEAD HARBOR in 1834 with William Hicks as first postmaster. Changed to Roslyn in 1844 with Hicks still postmaster.



1858 cover to London with bold ROSLYN/AUG/5/N.Y. tying pair of black twelve cents Washington stamps (Scott's No. 36). Addressed to the famous poet William Cullen Bryant who made his home in "Cedarmere", Roslyn. (Rodriguez Collection)



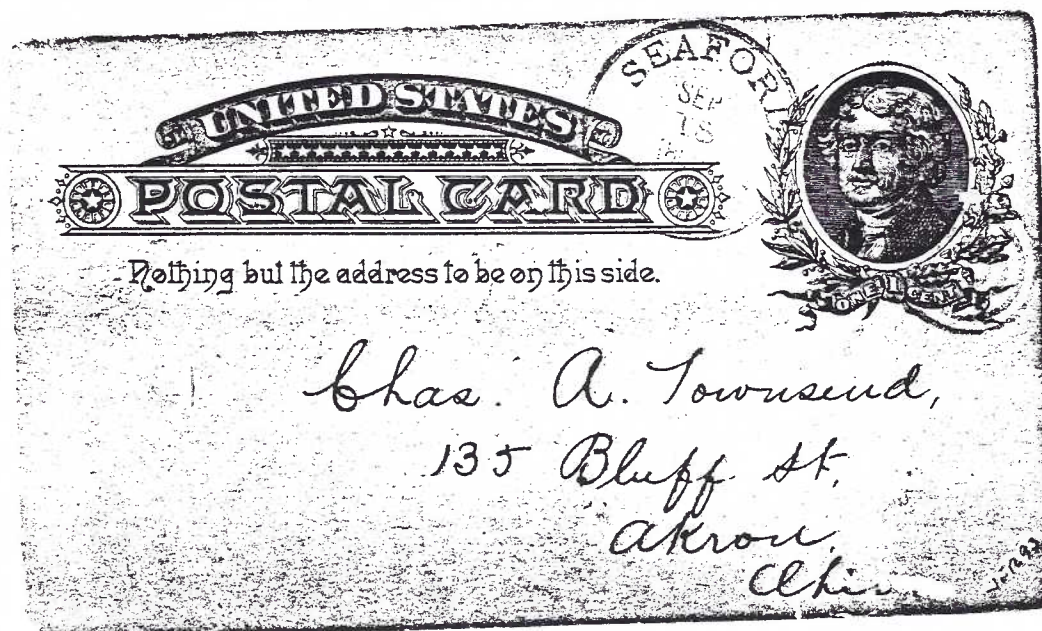
SEA CLIFF post office in 1900 showing a typical scene - waiting for the morning mail. This post office originated as SEA CLIFF GROVE in 1872, and changed to SEA CLIFF in 1880, with William R. DePuy as the first postmaster.



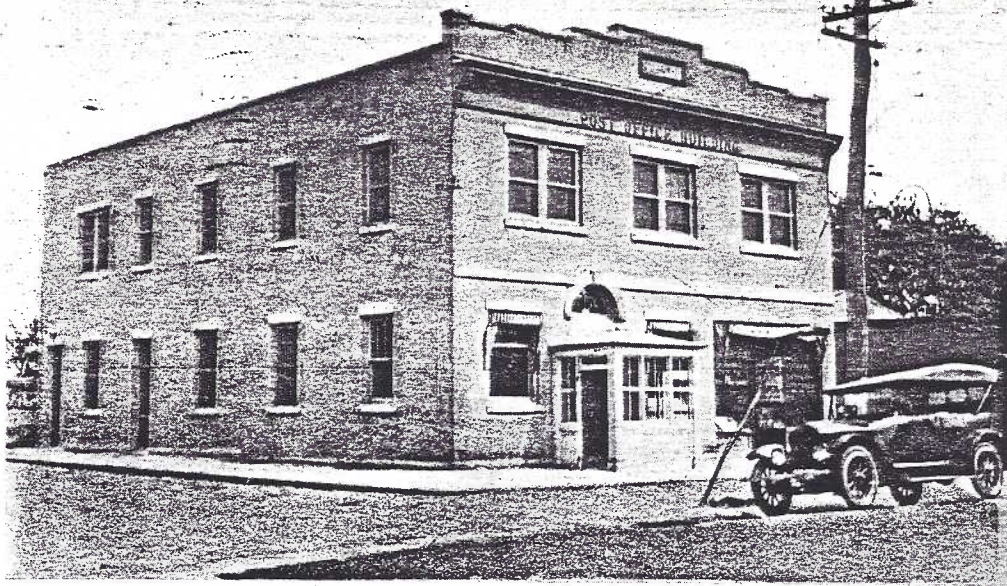
Corner card of the "Sea Cliff News" in 1896. Note Telephone 5 Sea Cliff.



SEAFORD, L.I. post office on a real photo post card used in 1910. This South Shore community was originally known as Jerusalem South, having a post office by that name in 1838. It became known as Seaford on January 7, 1868 under John B. Post, as postmaster.

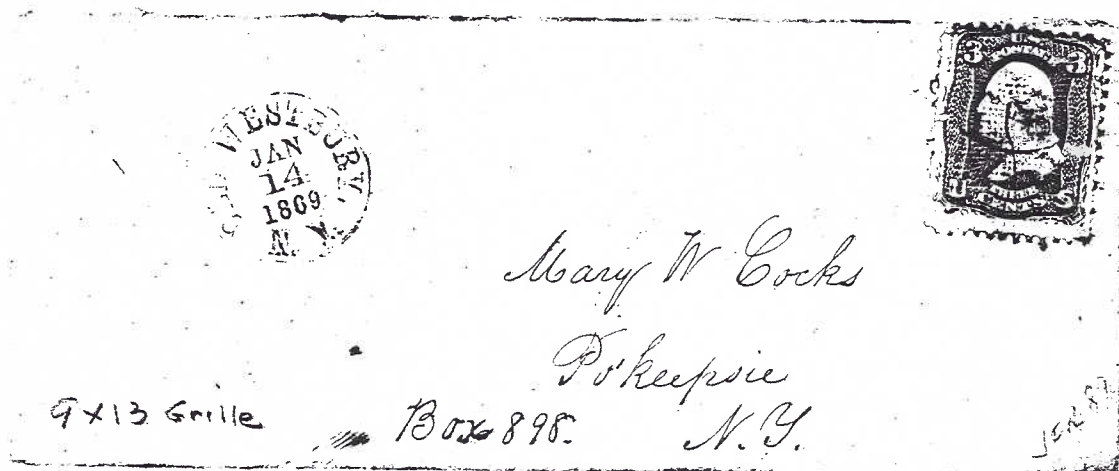


Seaford 1886 duplex cds with target killer on a government postal card to Ohio. (Rodriguez Collection)

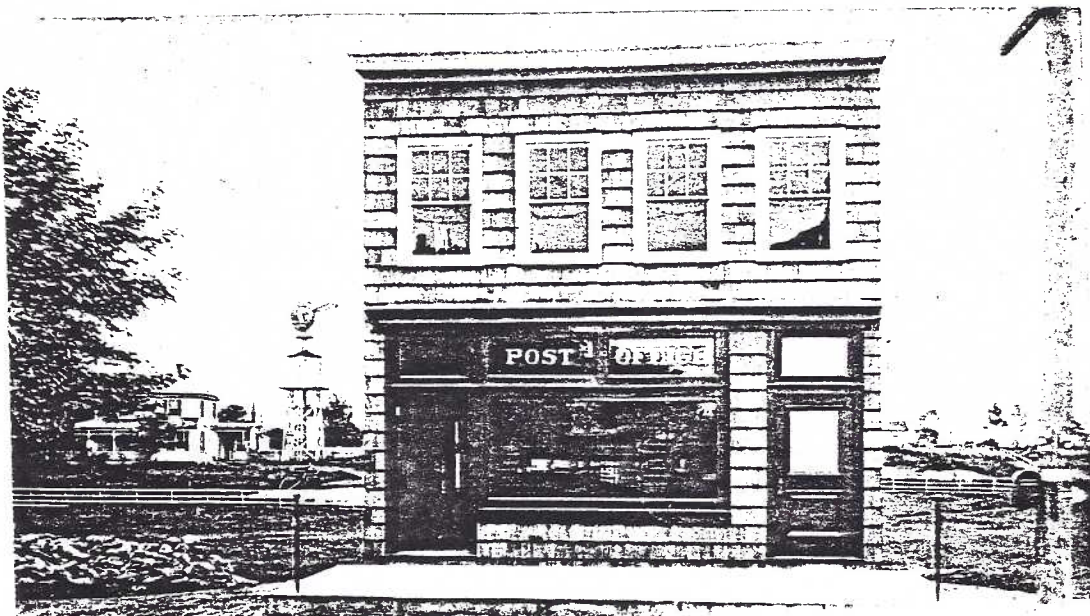


POST OFFICE, Westbury, L. I.

The **WESTBURY P.O.** about 1935. This post office went through many changes during its existence. It was originally known as Westbury for a very short period in 1841, then as OLD WESTBURY from March 25, 1868 until 1907, when it regained the original name of Westbury.

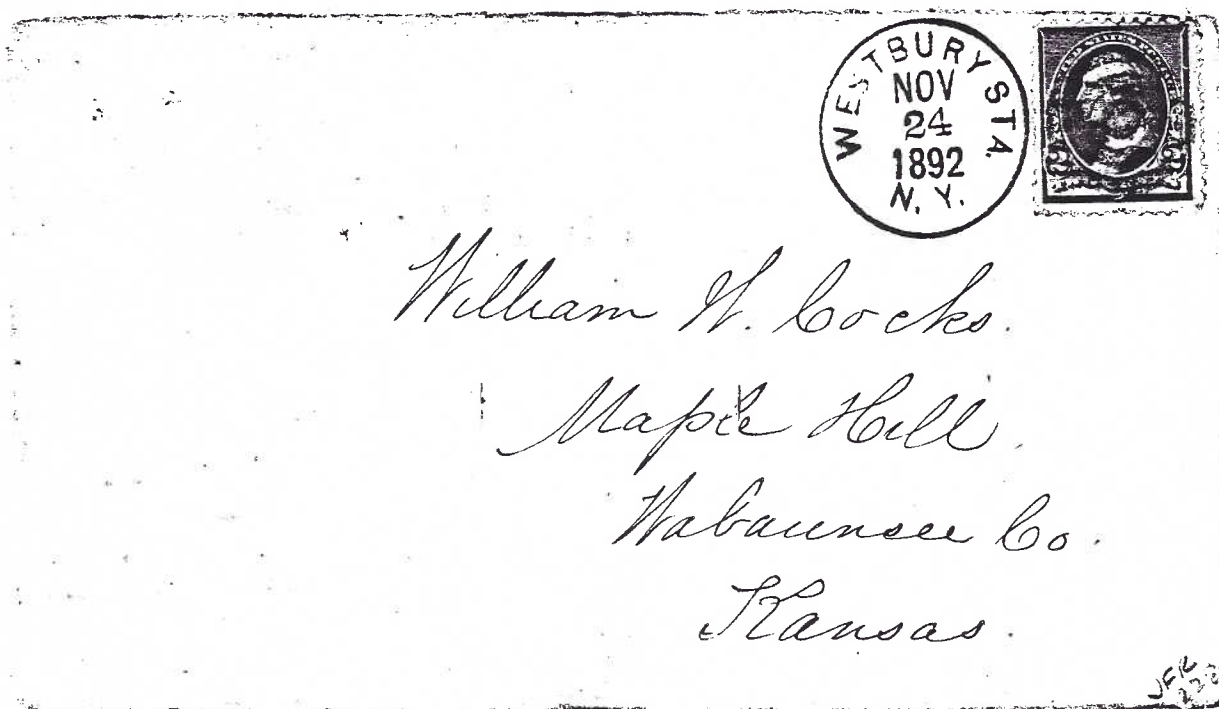


An early year date postmark from OLD WESTBURY -- 1869. A pen stroke cancels a 3c red Scott's 94. (Rodriguez Collection)



Post Office, Westbury Station, L. I.

WESTBURY STATION P.O. in 1906. Notice the mailbox attached to the lightpost at right. This post office was established on March 13, 1882 under Edward L. Kelsey. It later merged with the Westbury P.O. in 1908.



Bold 1892 duplex strike of Westbury Sta. with massive target killer on cover to Kansas. (Rodriguez Collection)



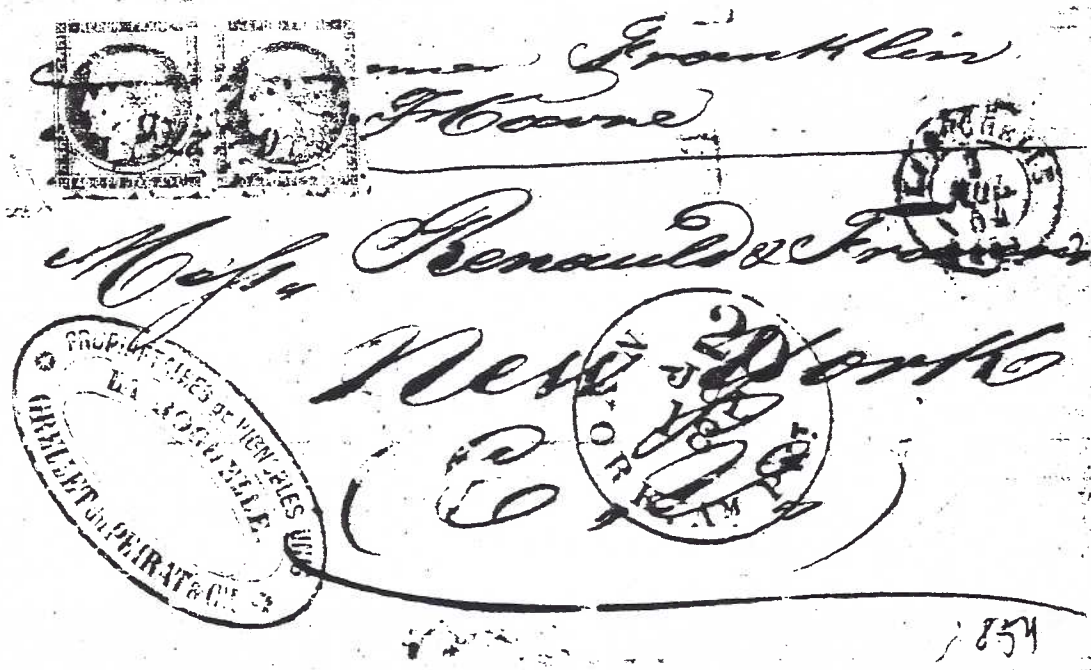
The **WOODBURY** post office and general store of Postmaster Baylis, circa 1905. This p.o. was first established in June 17, 1836 under John V. Hewlett. On April 11, 1840 it was moved to the West Hills P.O. in Huntington Township, Suffolk Co. Woodbury regained its own post office in 1858.



Registered cover from the Woodbury post office postmarked in 1896.

The Last Voyage of the Steamer Franklin
By Frederick Lightfoot

One of the rarest covers from Long Island's more dramatic postal history episodes is shown below. It is one of the letters salvaged from the United States Mail Steamship "Franklin" which ran aground on the South Shore in 1854. The "Franklin" was the first ship of "The New York and Havre Steam Navigation Company," which operated between the ports named. She was on her way back from France when she plowed into the beach.



The story, as told by Jeannette Edward Rattray, in her book "Ship Ashore!" (Coward-McCann, Inc., N.Y. 1955) is as follows:

"On July 17, 1854, the side-wheel steamer Franklin, bound from Havre, France, to New York, Captain James A. Wooten, Master, went ashore at Center Moriches in a heavy sea and dense fog. She struck the outer bar six hundred feet off the beach at 8:30 in the morning. The big anchors were thrown overboard to hold her, but the chains parted and she struck hard and fast, not far off the beach. The steamer Leviathan, Captain Hazard commanding, saw her predicament, and sailed on to New York to notify the owners. There was no Life Saving Service on the beach then and the first thing Moriches people knew about the wreck was when the Franklin fired guns to attract attention.

By the time the Moriches men had crossed Moriches Bay in small boats, the Franklin's fate was sealed. She lay broadside to the beach. But the volunteer rescuers were able to help passengers and crew to land in safety. They had taken to the ship's small boats; some were capsized and the passengers dumped into the surf. Spectators dragged them to safety, then ferried them across the bay to the mainland where they were cared for in Moriches homes. By that time the last train had gone from Yaphank, so one resident, Sidney B. Topping, mounted his horse and rode toward New York to notify the ship's owners.

The Franklin carried 150 passengers, 50 in crew, foreign mail, and valuable imports. She was 263 feet long, with a 41-foot beam and 26-foot draft, of 2195 tons; a fairly new ship, launched 1850. She had a handsome seven foot carved figurehead, a bust of Benjamin Franklin.

On July 18, tugs and sloops came to the rescue from New York. Mail, cargo and luggage was saved from the shore side. After several days, when the storm subsided, it was possible for horses and wagons to reach the vessel's side and cart things away to boats where the stuff was ferried across the bay and shipped by train from Yaphank. After several weeks it became clear that the ship could not be saved. Everything removable was sold, including the figurehead, which is now located in Maine.

The Franklin's hulk was used during World War II as a target for army flyers' machine guns. It is now a half-mile from shore and discernible at low tide. It is interesting to note that the shore of Long Island at that point has receded about half a mile since 1854."

The quantity of mail carried on the Havre route was not so large as one might expect because most mail between the United States and France was then routed through England. So very few covers aboard the "Franklin" on her last trip are apt to have survived.

Whether the French stamps on the particular cover shown belong to it is uncertain. According to Charles J. Starnes, French mail being sent to Havre for the U.S. packet had to pay 60 centimes for 7.5 gram weight in 1854. The stamps affixed to the letter represent 80 centimes, which would evidently be an overpayment. If the stamps do belong, a file fold through one indicates that the stamps have been moved on the cover, probably from the lower left corner of the face. In any case, the cover itself is a rarity. It is interesting that the New York post office processed this letter the same day, July 18th, that the mail was brought ashore.

Renewals are due by August 1st. RENEW NOW!
Send your check for \$10 to the Treasurer, Carl F. Baker 140 Lewis
Road, Northport, N.Y. 11768.

* * *

APS Computer Group - In response to a growing collector interest in computers, the American Philatelic Society has formed a computer group. The primary goals of the group are to establish standards for gathering, storing, and exchanging philatelic information via computers; to publish such standards and promote their utilization; and to provide a forum for exchanging ideas regarding computer uses in philately.

Three sub-groups have been established, each headed by an individual with interest and experience in a specialized area. These groups are Bibliographic Data Bases, Cataloging, and Census (collection recording). Additional sub-groups may be added as needs and goals are refined. The group will publish progress reports and will host meetings at regional and national philatelic shows. The first such meeting will be at STAMPSHOW '84 in Dallas, Texas, Aug. 23-26.

Collectors who are interested in becoming involved with this group can write to: Computer Group Chairman Martin D. Richardson, 7130 Claybeck Dr., Dayton, OH 45424.

* * *



*Mrs. Mary Ann Rose
Spartanburg
South Carolina*

LONG ISLAND CITY Star cancellation on cover tying 3c rose. See the update to the survey of star cancels in this issue. (Rodriguez Collection).

PAN AM and LONG ISLAND

By Robert S. Miller

Pan Am and its people are well known on Long Island today but few remember that the first airline formed by Juan Trippe, Pan Am's driving force, was Long Island Airways.

Trippe purchased seven war surplus single engine pontoon bi-planes for \$500 each, transported them to Rockaway Beach by rail and, particularly in the summer, provided thrills for hundreds of adventurous individuals who were willing to indulge in the then unusual experience of flying. The year was 1922 and Trippe's planes operated from the Coney Island to the Fire Island beaches. This operation lasted but a few years.

Trippe's next venture, Colonial Air Transport obtained Cam-1 and carried mail between New York and Boston. The flights operated out of Hadley Field, New Brunswick, N.J. via Teterboro, N.J. to Boston. In 1930, Newark Airport became the mail terminal for New York and it was not until 1939 that Trippe returned to Long Island. On May 20, 1939, Pan Am's Yankee Clipper NC18603 took off from the waters of Port Washington and circled the Perisphere at the New York World's Fair where a two way radio conversation between Captain LaPorte and government officials included greetings that had been telegraphed from President Roosevelt.

Pan Am's world wide operation has continuously been linked to Long Island since this time.



NEW YORK TO MARSEILLES COVER FLOWN ON FIRST FLIGHT

BENJAMIN F. THOMPSON, HISTORIAN - POSTMASTER

By J. Fred Rodriguez

I recently added to my Long Island book collection a first edition of the History of Long Island by Benjamin F. Thompson, 1839. This edition is considered to be one of the cornerstones of any good Long Island book collection. This acquisition has inspired this short article about this famous Long Islander.

Benjamin Franklin Thompson was a man of many talents. Since early childhood Thompson demonstrated his love for books and the academic disciplines, largely due to his father's influence, a learned physician named Samuel Thompson. Benjamin studied in various Long Island academies where he obtained a sound education. His keen interest in Long Island history and its rich lore was kindled in all probability during these years of schooling at the Clinton Academy in Easthampton and at the Huntington Academy. In 1802 he began his college education as a freshman at Yale University, but unfortunately and reluctantly he left Yale after the first year. His father summoned him, the eldest son, back to Setauket to manage the family farm. That was all the formal education that Benjamin had, although his ambition and desire for the pursuit of a professional life led him to acquire three distinct careers during his lifetime, namely, that of a medical doctor, a highly respected attorney, and a reknown historian.

The life of Benjamin F. Thompson is fascinating. The reader is encouraged to read his biography which is found in the enlarged third edition of Thompson's History of Long Island published posthumously in 1918 by Charles J. Werner, and reprinted by Ira J. Friedman, Inc. in 1962. Mr. Werner was a personal friend of Mr. Thompson's granddaughter. Through her he obtained the manuscript of the third edition which Thompson completed in 1849, a few months prior to his death at the age of 65.

The period of Benjamin Thompson's life which has particular interest to the Long Island postal historian is that of his tenure as the postmaster of Setauket, one of the many public oriented posts that he held during his lifetime. Mr. Werner tells us: "Two years after his last term in the State Assembly, at the age of thirty-two, he was appointed Postmaster of Setauket, his native village, by Postmaster-General Return Jonathan Meigs, son of the patriot of the same name who led the successful attack upon the British fort and garrison at Sag Harbor in the Revolution. Thompson's certificate of appointment bears the date of April 19, 1816. He held the office until 1824."

In 1816 Thompson purchased a large dwelling adjoining the old Thompson homestead in Setauket. He lived there until 1824 when he removed to Hempstead. He conducted the post office

business from his home until 1821 and not until 1824 as written by the biographer. A check of the official records at the National Archives reveals that Benjamin F. Thompson relinquished his position as Postmaster in August of 1821. His twenty-one year old half-brother, Samuel L.(Ludlow) Thompson, was appointed Postmaster of Setauket on August 20, 1821. Benjamin Thompson and Roger Smith posted the \$1000 surety bond required by the Post Office Dept. Young Samuel held that post until October 19, 1829.

It appears that Benjamin Thompson's reason for resigning as Postmaster in 1821 was due to the increasing demands placed on his time as a practicing attorney, requiring frequent court appearances and travel away from home. We again cite from Mr. Werner's biography: "In 1818, he determined to relinquish altogether the practice of medicine and to qualify himself for the legal profession, in which he achieved an enviable reputation, eclipsed only by his historical attainments. To this end he entered upon a course of legal studies, and read with such intense application that in 1821, at the October term of the Court of Common Pleas in Suffolk County, he was admitted as an attorney of that Court and later as counselor. Subsequently, he was admitted as attorney and counselor of the Supreme Court of the State. His rise in the profession was rapid, for in 1826 he was appointed District Attorney for Queens County..."

Thus, we see that in probable anticipation of his admission to the Court, he felt that he could not carry on the duties of Postmaster adequately.

Illustrated overleaf is a stampless folded letter bearing Benjamin F. Thompson's signature as Postmaster of Setauket. It is datelined "Setauket 8 Jan 1821", its contents dealing with legal matters. Of interest is Thompson's bill for professional services rendered on behalf of the addressee, George W. Strong, Esq., a prominent Long Island attorney from an equally prominent Long Island family. We quote as written: "*Agreeably to your wish I have filled up, signed and sworn to, this ammended affidavit, and now inclosed it to you, for which you may send me two dollars, as a compensation for serving the subpoena (going to both their house on purpose) - going to the commissioner and paying his fees - excess of postage on your letter (which exceeded the allowed weight to a postmaster free of postage) - etc.*" Postmaster Thompson probably included in his bill a charge of ten or twenty cents for the extra postage required on an overweight letter as mandated by postal regulations. The Postal Law and Regulations of 1817, under Sec. 24 states: "And be it further enacted, that letters and packets to and from the following officers of the United States, shall be received and conveyed by post, free of postage. Each Postmaster, provided each of his letters or packets shall not exceed half an ounce in weight....and in case of excess of weight that excess alone shall be paid for..."

*Free Benj. F. Thompson
One Setauket N.Y.*

*George W. Strong Esquire
Attorney & Counsellor at Law
New York.*

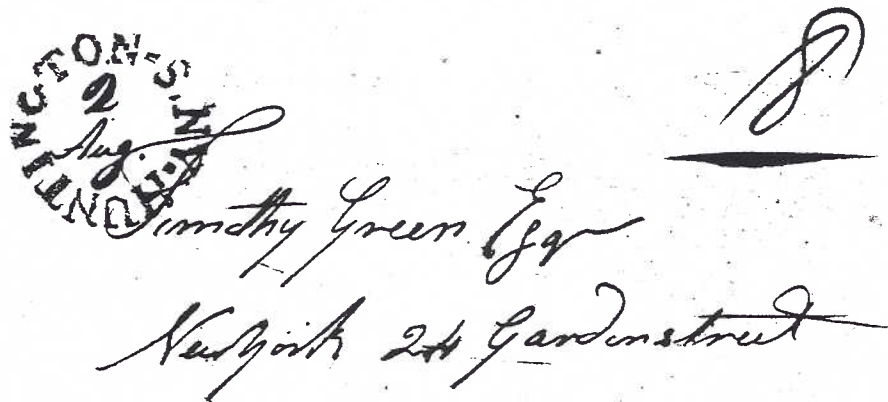
1821 SFL FROM BENJAMIN F. THOMPSON AS POSTMASTER OF THE
SETAUKET POST OFFICE. (From the author's collection)

After moving to Hempstead in 1824, a village which afforded him greater opportunities to expand his law practice, Thompson became a prominent citizen and public servant held in the highest regard by his profession and the public at large. He resigned as Queens County District Attorney in 1836 after which time he dedicated many hours to historical research. He expanded his first edition of his History of Long Island to a two volume edition printed in 1843. The two editions combined sold over 4,000 copies. As previously mentioned, he had already completed a third edition intended for publication in October 1849 when he suddenly passed away on March 21, 1849.

It is fitting at this time to recall Thompson's "Extract from the Preface to the Second Edition", written July 4, 1843, in which he concluded: "The compiler dismisses his work, believing that he has thereby rendered a valuable service to his country, one which the inhabitants of Long Island will appreciate when he shall be numbered with the dead, and the hand that pens these lines be crumbled into dust." Benjamin F. Thompson's endeavors had not been

in vain - no finer memorial to this great man exists than his History of Long Island. With that thought in mind, this brief sketch was written in commemoration of Benjamin F. Thompson's bi-centennial birthday celebrated recently on May 15, 1984.

* * *



A BOLD BLACK "HUNTINGTON-S.N.Y." RIMLESS CDS WITH MANUSCRIPT "18" RATE ON ENTIRE TO NEW YORK, LIGHT FILE FOLD, VERY FINE STRIKE. (Courtesy of Richard C. Frojola, INC.). See "Auction Action" for other auction results.

* * *

STAMP COLLECTION FOR SALE.
Will sell collection of 1100 U.S. and Foreign stamps in album. Price, \$10.00. Catalogued at \$30.00. S. S. SCOTT, Ass't P. M. Fresh Pond, L. I.

Original clipping from the May 3, 1890 issue of The Long Islander, Huntington's weekly newspaper founded by Walt Whitman. The Fresh Pond P.O. was located about a mile from the Fort Salonga post office in Northport.

LONG ISLAND STAR CANCELLATIONS - UPDATE

By J. Fred Rodriguez

In the LIPHS Journal Whole No. 8, we began a list of all the known covers of Long Island which have been cancelled by handstamps depicting "stars" of all forms and shapes. The first listing was a good start. A total of 31 post offices using star cancellations were listed therein. This update increases that list to 40 Long Island post offices with star cancels and a total of 14 different types of stars.

All members are urged to add to this survey of the stars. Please send me photocopies of your covers which show star cancels. A listing of your covers will suffice if photocopies are unavailable. If you see any stars listed in this survey that you may have a different year of usage, please let me know. Send your copies to J. Fred Rodriguez 62 Shady Lane, Huntington, N.Y. 11743.

| TOWN NAME | COUNTY | STAR TYPE | YEAR | COLOR | COMMENTS |
|---------------|---------|--------------|------|--------|---|
| Oyster Bay | Queens | 7 | 1886 | Purple | Shown on pg.34 LIPHS Whole No. 8 |
| Far Rockaway | | | | | |
| Oceanus Sta. | Queens | 57 | 1904 | Black | On registered cover |
| Patchogue | Suffolk | 19 | 1891 | Black | |
| Brooklyn | Kings | 1 | 1885 | Black | |
| Bay Ridge | Kings | 2 | 1892 | Black | |
| Sea Cliff | Queens | 2 | 1886 | Black | County postmark |
| Springfield | Queens | 1 | 1884 | Blue | L.I. in cds |
| Huntington | Suffolk | 58 | 1869 | Black | Masonic, listed by Herst-Sampson pg. 240 No. 1713. Also listed in Skinner-Eno pgs.242,101,286 as fancy cancel ST-C7. Not reported on cover. |
| Bridgehampton | Suffolk | 4 | 1861 | Black | Shown in Skinner-Eno pg.95, reported on cover (ST-St 32). Like type 4 but larger. |
| Northport | Suffolk | 2 | 1870 | Black | approximate year of use |
| | | 7 | 1884 | Purple | Used with receiving hs |
| | | 7 | 1885 | Purple | " " " " |
| Water Mills | Suffolk | 21 | 1867 | Black | Manuscript townmark |
| Cutchogue | Suffolk | 2 | 1866 | Black | approximate year of use |
| L.I. City | Queens | 59 | 1866 | Black | Like type 30 but with negative circles at each point of the star. See pg. 31 for photo. Circa 1866 use. |



Type 21



Type 57

Masonic



Type 58

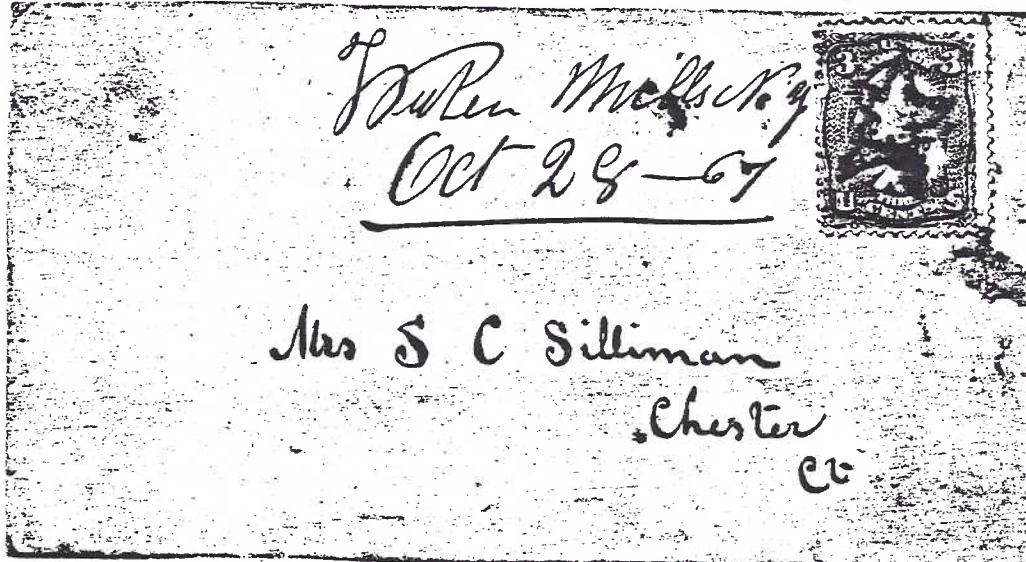


Type 59



Type 4

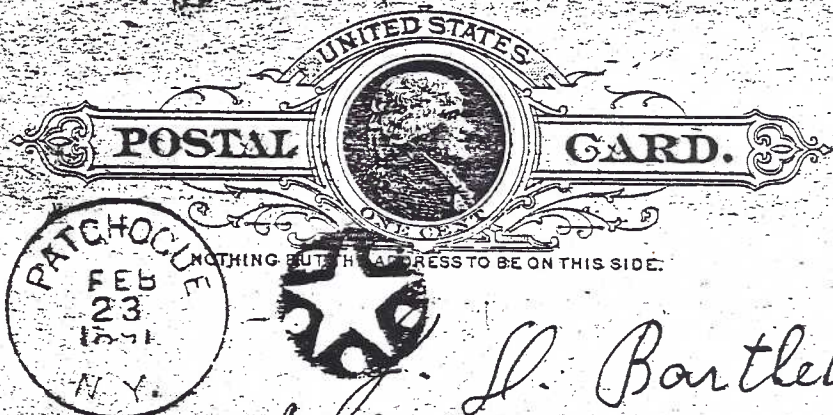
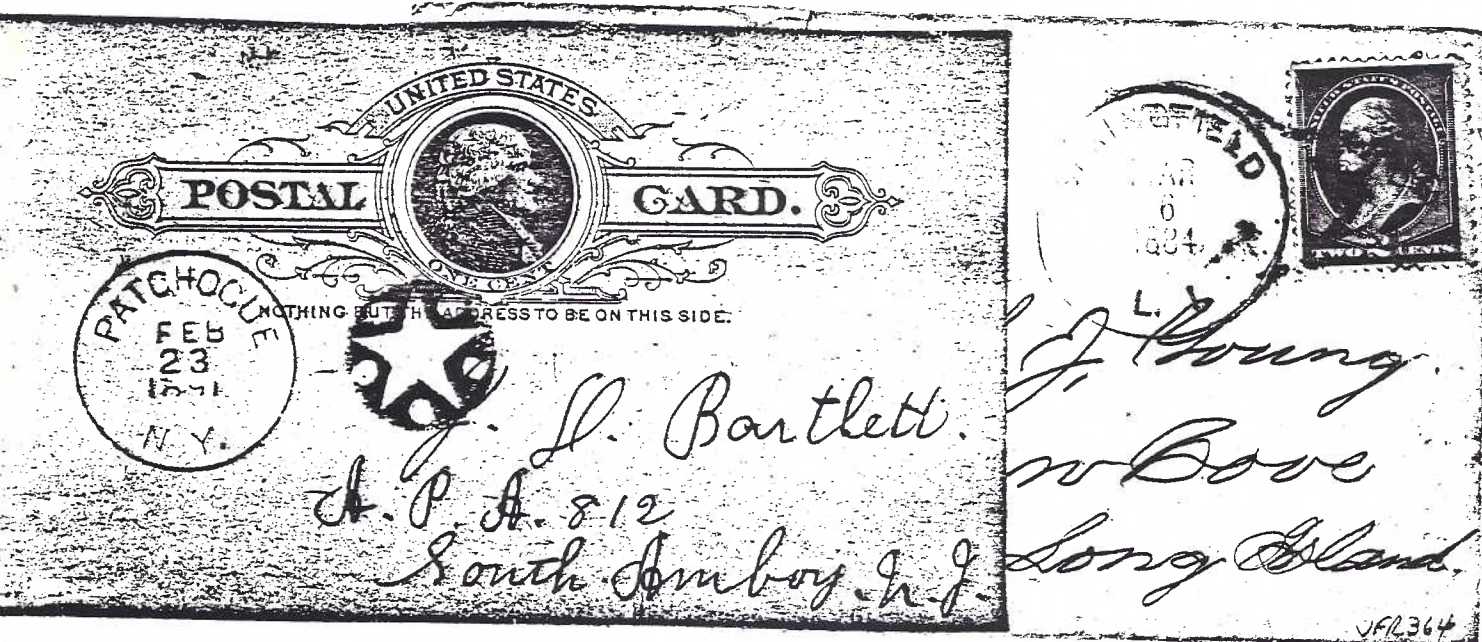
Long Island Star Cancellations - Illustrations



Water Mills N.Y.
Oct 28-67

Mrs S C Silliman
Chester
Ct

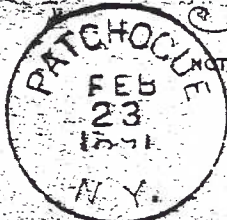
WATER MILLS N.Y. Oct. 28, 1867 with negative star within star killer on cover to Chester, Ct. (Courtesy of Richard C. Frojola, Inc.)



POSTAL

GARD.

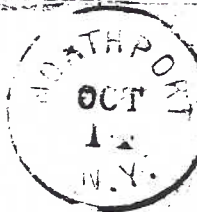
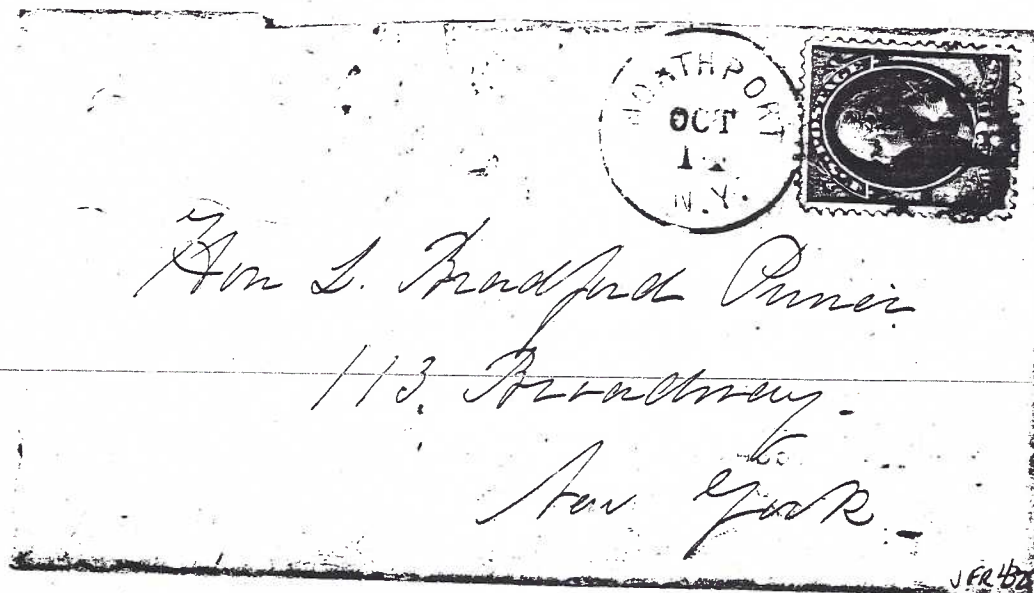
NOTHING BUT THE ADDRESS TO BE ON THIS SIDE.



J. L. Bartlett.
A. P. A. 812
South Amboy N.J.

J. Young
W. Dove
Long Island

JFR364



Am L. Bradford Pinner
113 Broadway
New York

JFR452

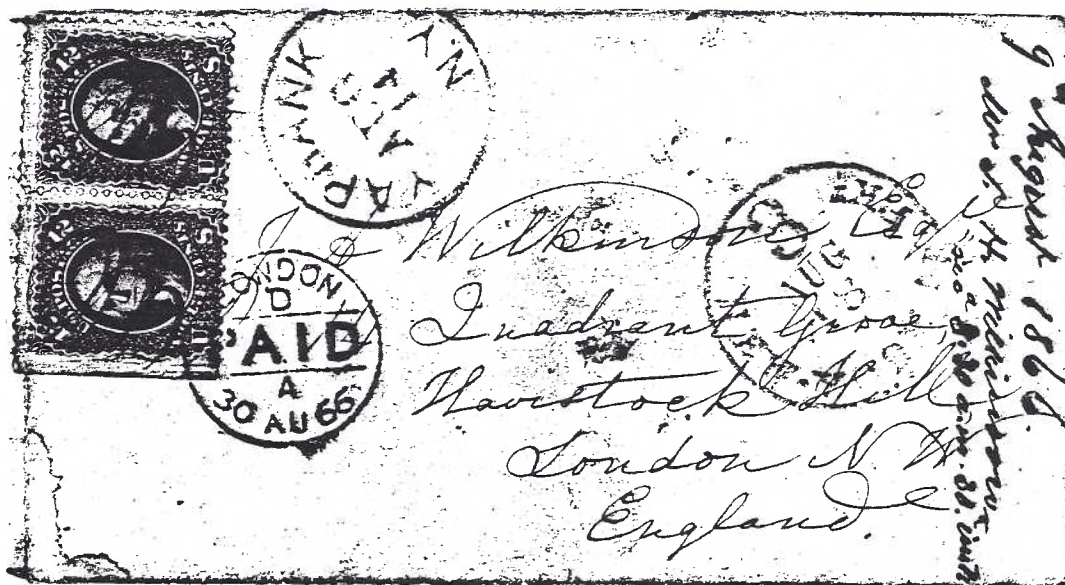
AUCTION ACTION

Long Island Postal History at Auction - Prices Realized

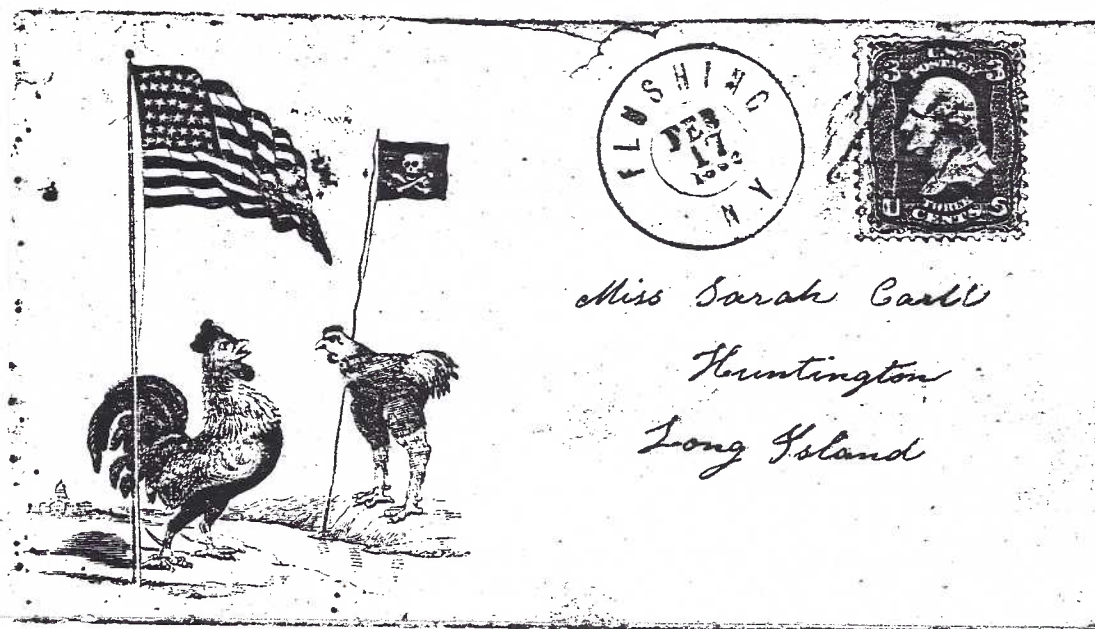
| Date of Sale | Auction House | Lot No. | Description | Auction Est. | Price Realized* |
|--------------------|------------------|------------|--|-----------------|--------------------|
| 2/22/84 | Christie's | 200 | 6 & 12 cent 1869 pictorial issue on registered cover from Williamsburgh ds. Fine ex Mueller | 200 | 260 |
| 3/17/84 | Schiff | 1689 | L.I. postal history coll. 33 covers incl. Cutchogue patriotic, early Peconic. Mixed cond. | 50-100 | 80 F |
| 4/4/84 | Apfelbaum | 95 | Yaphank cds on cover to London with 12c black (69) horiz. pair | 50-75 | 110 B |
| 5/11/84 | Wolffer's | 3942 | 1866 cover to London frank- ed with 24c gr. lilac (78a) tied by Bellport target | 125-150 | 160 B |
| 5/26/84 | Phillips | 345 | New Village straight line 3c rose tied by circle of wedges | 50-60 | 110 F |
| 6/10/84 | Frojola | 104 | 16 folded letters & covers from Suffolk Co. 1812/1855 | 250-300 | 260/800 B |
| | | 147 | Huntington-S N.Y. cds with outer rings and ms 18, vf | 50-75 | 115/450 F |
| | | 189 | Southold NY red arc on 1824 sfl with ms 121/2 rate, vf | 150-200 | 350/500 F |
| | | 192 | Stony Brook N.Y. blue sten- cil pmk on 1845 entire. vf | 100-150 | 110/500 F |
| | | 248 | L.I. Rail Road NY red dc hs on 1849 letter from Islip, f | 200-250 | 65/135 F |
| | | 376 | Red Commack NY tying #26 3c dull red on fine patriotic cover, fine strike | 50-75 | 80/160 F |
| | | 414 | #65, 3c rose with unusual ornamented "Paid" cancel (not reported on cover) on red embossed "Guano Works" cc from Orient, f | 50-75 | 170 F |
| | | 507 | Group of 83 covers from Suffolk Co. 1852/1886 incl. 11 co. pmks., Speonk of fancy cancels; vf lot | 750-1000 | 450/1050 F |
| 6/20/84 | Christie's | 257 | Flushing ds on red & blue Rooster & Chicken patriotic caricature cover. 3c rose (65) tied by grid. Handsome & rare, ex Walcott | 120 | 100/150 F |

*F=sold to a floor bidder; B=sold to the book; opening bid/hammer price
price realized does not include 10% buyer's comm., if any.

Over twenty other lots were spotted in auction catalogs over the last few months. The Frojola sale had the most L.I. covers, part of the gigantic Robert A. Hutchinson Collection of New York State Postal History. Strong prices realized are evident for choice Long Island material.



YAPHANK N.Y. (1866) on cover to London with 12c black horiz. pair (69)
Lot 95 in the April 4, 1984 Apfelbaum Auction.



FLUSHING, N.Y. double circle year date postmark - 1862 with grid cancellation tying 3¢ rose on patriotic cover to Huntington. Ex-Walcott. Lot #257 in Christie's June 21, 1984 sale.

CLASSIFIED ADS

WANTED - Farmingdale, Bethpage (Central Park), Old Bethpage, Plainedge, Plainview (Manetto Hill), Massapequa, Pinelawn, and Amityville history material. Gary Hammond, 31 Lowell Drive, Farmingdale, N.Y. 11735

WANTED - OLD QUEENS Post Cards. Original collections of old post cards.(212) 523-3083.

WANTED - Covers postmarked from Cold Spring or Cold Spring Harbor, from the stampless period through 1900. David Snow, 130 North 9th St., Lindenhurst, N.Y. 11757

WANTED - Long Island post cards and covers postally marked "Missent to _____ (Town Name)". Complete and sharp strikes only. Carl F. Baker 140 Lewis Road, Northport, N.Y. 11768

WANTED - Pre 1920 view cards of Roslyn, Port Washington, Glen Cove, Manhasset, Great Neck. Stampless covers also. Send on approval to Bob Juceam, 106 Hemlock Road, Manhasset N. Y. 11030

WANTED - Long Island postal history items from Kings (Brooklyn), Queens, Nassau, and Suffolk Counties, from the stampless period to the present. All covers considered. Seeking L.I. fancy cancels on cover, postmaster free franks, registered covers, covers to foreign destinations, and Civil War patriotics used from L.I. Also want L.I. post cards from 1900 to 1920, especially those depicting Long Island post offices and railroad stations. Approvals preferred or send photocopies to J. Fred Rodriguez 62 Shady Lane, Huntington, N.Y. 11743

WANTED - The U.S. 1869 pictorial issue used on cover with local town cancels from anywhere in the country, especially from New Jersey and Arizona. Correspondence invited. Brad Arch, 144 Hamilton Ave., CLIFTON, New Jersey 07011

*****LIPHS*****

YOUR AD COULD BE HERE AT NO COST TO MEMBERS. SEND YOUR ADS TO YOUR EDITOR AT LEAST ONE MONTH PRIOR TO CALENDAR QUARTER END.

*****LIPHS*****

RECRUIT A NEW MEMBER TODAY! USE THE APPLICATION FORM IN THIS ISSUE.

REMEMBER, FISCAL 1984-1985 DUES ARE DUE AUGUST FIRST. RENEW EARLY!

LONG ISLAND POSTAL HISTORY SOCIETY

MEMBERSHIP ROSTER - 1984

William A. Anderson
21 Smith St. Box 122
Shelter Island, N.Y. 11964

Brad Arch (Bradley J.)
144 Hamilton Ave.
Clifton, N.J. 11596

Carl F. Baker
140 Lewis Road
Northport, N.Y. 11768

Keith Bantz
222 Artist Lake Drive
Middle Island, N.Y. 11953

Robert V. Boos
34 Santa Barbara Dr.
Plainview, N.Y. 11803

Mrs. Linda E. Braner
111 Leahy St.
Jericho, N.Y. 11753

Joseph J. Cartafalsa
P.O. Box 1014
Bensalem, PA 19020

Leon J. Cheris, D.D.S.
31-16 Steinway St.
Astoria, N.Y. 11103

I.H. Cherrington
39 Oak Drive
New Hyde Park, N.Y. 11040

Irving Choban
P.O. Box N Flatbush Sta.
2255 Church Ave.
Brooklyn, N.Y. 11226

Dr. Edward I. Coher
81 Middle Pond Road
Southampton, N.Y. 11968

William J. Duncan
26 Moody Ave.
Freeport, N.Y. 11520

Falk Finkelburg
P.O. Box 237
Coram, N.Y. 11727

Arthur Fitzpatrick
263 Cushing Ave.
Williston Park, N.Y. 11596

Richard C. Frojola
Moody Lane
Danbury, CT 06810

Mrs. Catherine Gifford
184-51 Hovenden Road
Jamaica, N.Y. 11432

William R. Gibson
650 Shore Rd. Apt. 3L
Long Beach, N.Y. 11561

Greenlawn-Centerport Hist. Assn.
P.O. Box 354
Greenlawn, N.Y. 11740

H & H Marketing
127 West 56th St.
New York, N.Y. 10019

Alfred Hahn
14 Quay Court
Centerport, N.Y. 11721

Joseph W. Halpern
519 Ogden St.
Denver, CO 80218

Gary R. Hammond
31 Lowell Dr.
Farmingdale, N.Y. 11735

Alexander Hyde
P.O. Box 187
Lawrence, N.Y. 11559

David L. Jarrett
P.O. Box 1486 Grand Central Sta.
New York, N.Y. 10163

LONG ISLAND POSTAL HISTORY SOCIETY

Richard O. Jones
135 Commonwealth Ave.
Massapequa, N.Y. 11758

Richard B. Jordan
1551 E. Shaw Ave., Suite 101
Fresno, CA 93710

Robert E. Juceam
106 Hemlock Rd.
Manhasset, N.Y. 11030

Daniel M. Knowles, M.D.
97-10 71st Ave.
Forest Hills, N.Y. 11375

Mrs. Emma G. Koberg
295 Hamilton St. Apt. 22
Geneva, N.Y. 14456

Martin Koenig
1245 E. 22nd St.
Brooklyn, N.Y. 11210

Morton R. Laby, M.D.
19 Washington Ave.
Setauket, N.Y. 11733

Frederick S. Lightfoot
P.O. Box A-F
Greenport, N.Y. 11944

Long Island Historical Society
128 Pierrepont St.
Brooklyn, N.Y. 11201

Brendan McCann
61-21 182nd St.
Flushing, N.Y. 11365

Gordon McHenry
P.O. Box 117
Osprey, FL 33559

Martin Margulis
1368 Metropolitan Ave.
Bronx, N.Y. 10462

Robert C. Miller
126 Drake Ave.
Staten Island, N.Y. 10314

Joseph O. Mortensen
P.O. Drawer 1160
East Quogue, N.Y. 11942

Kenneth A. Pitt
P.O. Box 87
Catharpin, VA 22018

Arthur Pollinger
15 Dolphin Dr.
Farmingdale, N.Y. 11735

John M. Price, Jr. M.D.
8 Woodland Place
Great Neck, N.Y. 11021

David H. Proulx
7629 Homestead Dr.
Baldwinsville, N.Y. 13027

Steven Rappaport
57-33 244th St.
Douglaston, N.Y. 11362

Joseph M. Rhatigan, Jr.
4519 Avenue M
Brooklyn, N.Y. 11234

J. Fred Rodriguez
62 Shady Lane
Huntington, N.Y. 11743

Jose L. Rodriguez
707 Wildwood Dr.
Cheshire, CT 06410

Frederick Schmitt
P.O. Box 67
Woodbury, N.Y. 11797

Vincent F. Seyfried
103 Pine St.
Garden City, N.Y. 11530

LONG ISLAND POSTAL HISTORY SOCIETY

Joel Shapiro
135 East 83rd St.
New York, N.Y. 10028

Robert Sklarz
14 Amherst Road
Hicksville, N.Y. 11801

David W. Snow
130 North 9th St.
Lindenhurst, N.Y. 11757

Southold Historical Society
Main Road
Southold, N.Y. 11971

Herbert R. Stannard
195 Cedar Ave.
Patchogue, N.Y. 11772

William Stearns
1 Circle Drive
Syosset, N.Y. 11791

Henry Stollnitz
24 Rockrose Place
Forest Hills, N.Y. 11375

Robert Stonehill
35-55 73rd St.
Jackson Heights, N.Y. 11372

Mrs. Beulah Terry
288 Gillette Ave.
Bayport, N.Y. 11705

Donald W. Tonjes
P.O. Box 362
Commack, N.Y. 11725

Mrs. Linda Wierenga
P.O. Box 595
Muskegon, MI 49443

Mrs. Edith Wyckoff
P.O. Box 468
Locust Valley, N.Y. 11560



